



Name of Contract : REPAIR OF STEEL FENCE AND
AUXILIARY GATE,
Location of Project : Port of Kolambugan, Lanao del Norte
Reference Number : CW 009- 2022

QUOTATION (BILL OF QUANTITIES)

Project Name : REPAIR OF STEEL FENCE AND AUXILIARY GATE,
Project Location : Port of Kolambugan, Lanao del Norte

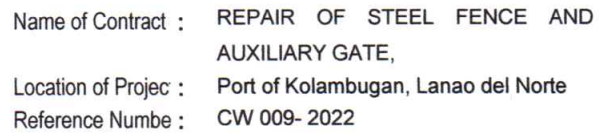
ITEM NO.	DESCRIPTION	UNIT	QUANTITY	UNIT PRICE (Pesos)	AMOUNT (Pesos)
I	Demolition/Disposal of Debris	sq.m.	1.28	P	P
Demolish and dispose existing concrete pavement prior to foundation as indicated in the plan.					
(Pesos					
II	Excavation Works	cu.m.	0.50	P	P
Excavate and dispose excess materials for Column & footing as indicated in the plan.					
(Pesos					
III	Installation of Steel Pipe Gate	lot	1.00	P	P
Supply, Fabricate and Install Steel Framed Gate as indicated in the plan..					
(Pesos					
IV	Supply & Install Steel Reinforcements for Column & Footing	kgs.	28.72	P	P
Supply & Install Steel Reinforcements for Column & Footing as indicated in the plan.					
(Pesos					
V	Concreting Works	cu.m.	0.84	P	P
Supply and place concrete for Column & Footing as indicated in the plan.					
(Pesos					
SUB - TOTAL A					P

page 1 of 2

SUBMITTED BY :

NAME OF THE REPRESENTATIVE OF THE BIDDER

NAME OF BIDDER

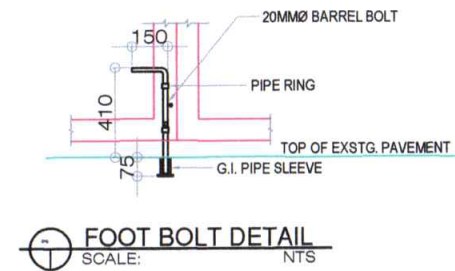
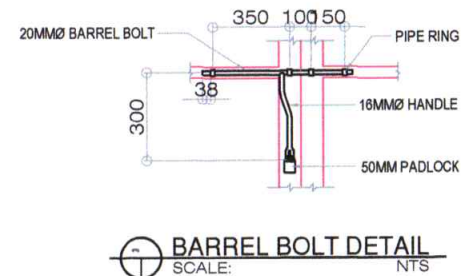
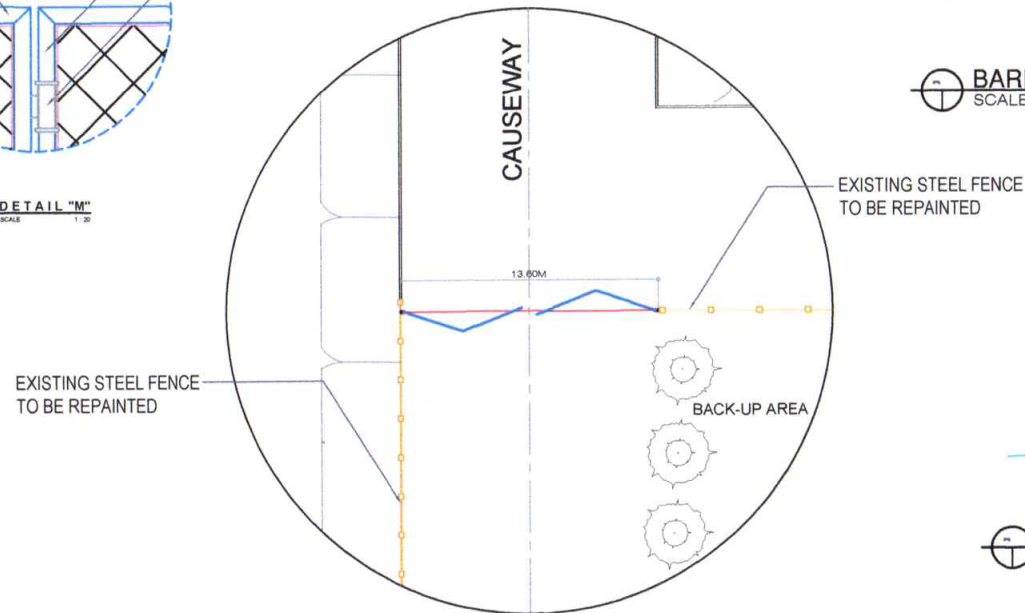
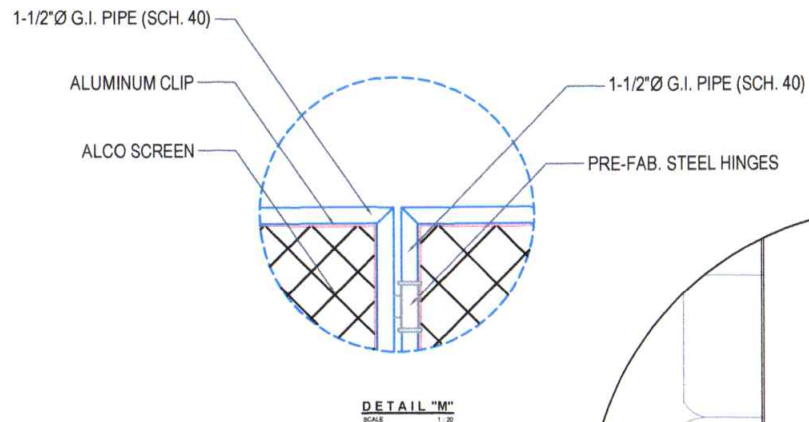


Project Name	: REPAIR OF STEEL FENCE AND AUXILIARY GATE,
Project Location	: Port of Kolambugan, Lanao del Norte

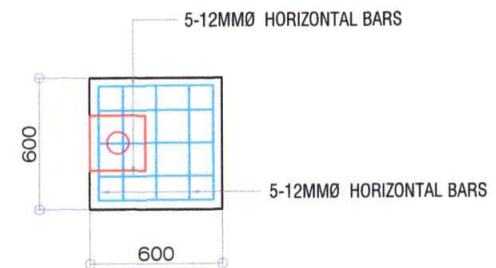
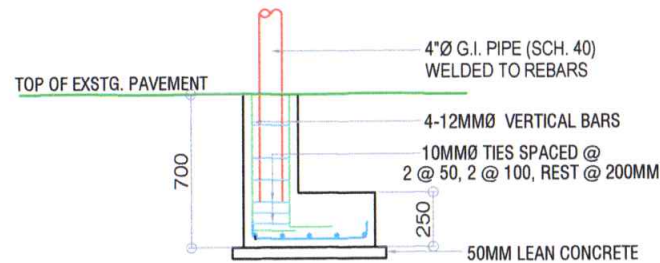
IN WORDS : _____


NOTE : 1 For Labor, Material and Equipments
2 For details please refer to the Engineering Services Division

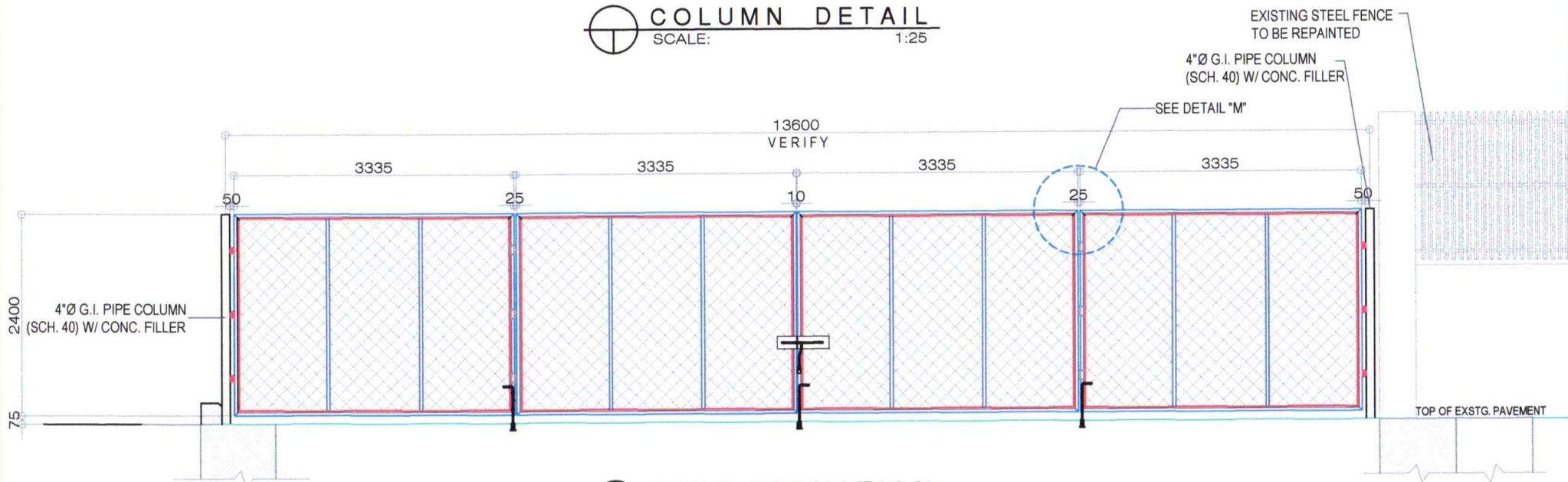
DATE _____



TITLE:		REPAIR OF STEEL FENCE AND AUXILIARY GATE				DEVELOPMENT PLAN		SHEET NO. <div><div>2</div><div>3</div></div>
LOCATION:		PORT OF KOLAMBUGAN, LANAO DEL NORTE				SHEET CONTENTS		
PREPARED BY:		CHECKED BY:	RECOMMENDED BY:	APPROVED:		<ul style="list-style-type: none">● SITE DEVELOPMENT PLAN● FOOT & BARREL BOLT DETAIL● DETAIL "M"		
Signed ARNEL C. OCLARINO Senior Engineer A		Signed COLIN KAY R. CAJOTE Supervising Engineer A	Signed JOEL B. ESCALA ESD Manager	Signed MEDARDO I. SOSOBRAO, JR. Acting Port Manager				



 **COLUMN DETAIL**
SCALE: 1:25



 **GATE ELEVATION**
SCALE: 1:50



TITLE:		REPAIR OF STEEL FENCE AND AUXILIARY GATE				STEEL GATE		SHEET NO. <div><div></div><div>3</div><div>3</div></div>
LOCATION:		PORT OF KOLAMBUGAN, LANAO DEL NORTE				SHEET CONTENTS		
PREPARED BY: <div>Signed</div> <div>ARNEL C. OCLARINO</div> <div>Senior Engineer A</div>		CHECKED BY: <div>Signed</div> <div>COLIN KAY R. CAJOTE</div> <div>Supervising Engineer A</div>	RECOMMENDED BY: <div>Signed</div> <div>JOEL B. ESCALA</div> <div>ESD Manager</div>	APPROVED: <div>Signed</div> <div>MEDARDO I. SOSOBRAO, JR.</div> <div>Acting Port Manager</div>		<div>● COLUMN DETAIL</div> <div>● GATE ELEVATION</div>		

- COLUMN DETAIL
- GATE ELEVATION