

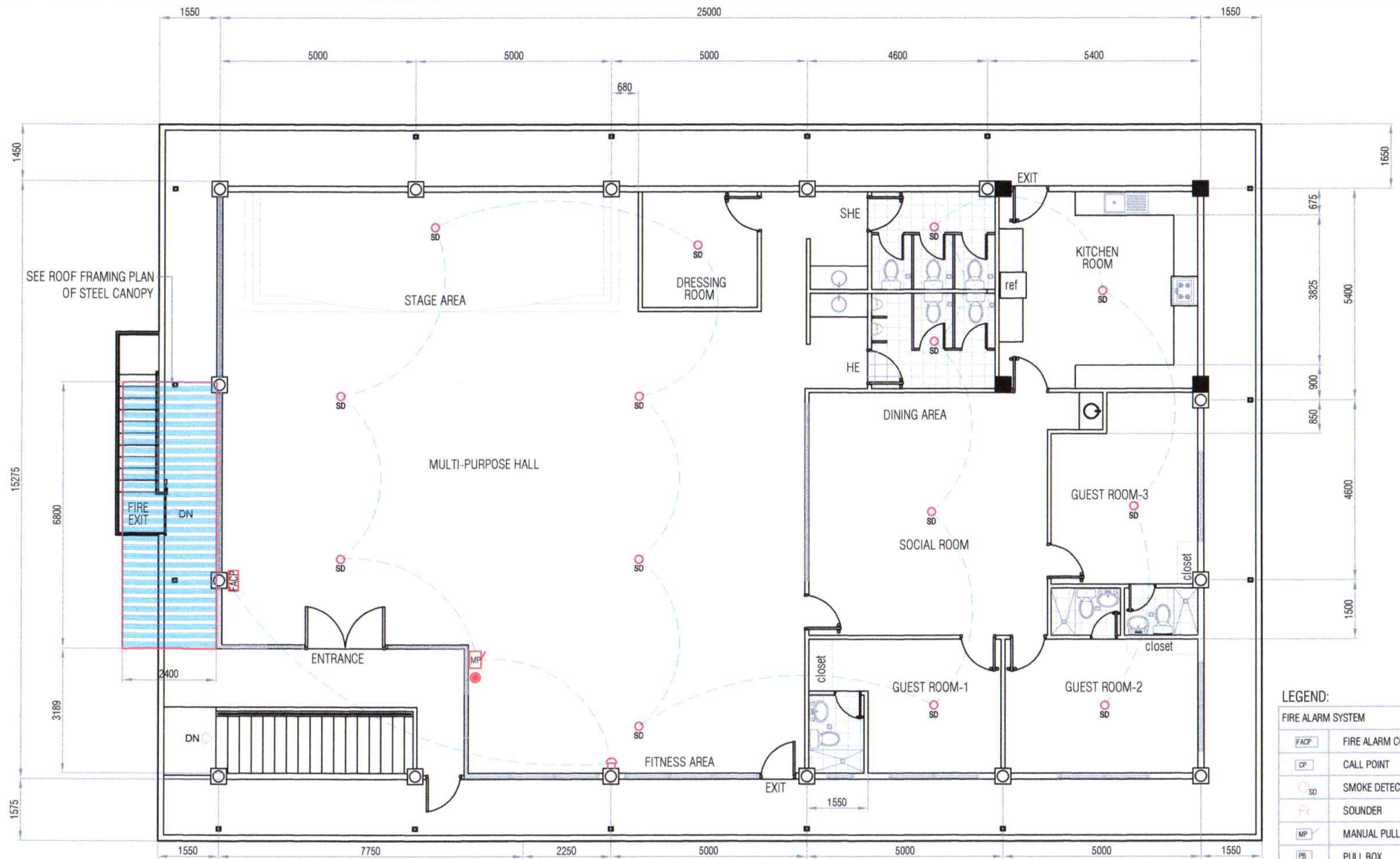
Project Name : Repair of Canopy and Improvement of Fire Detection Alarm System at Multi-Purpose Hall,

---

Project Location : Port of Iligan, Iligan City

IN WORDS : \_\_\_\_\_

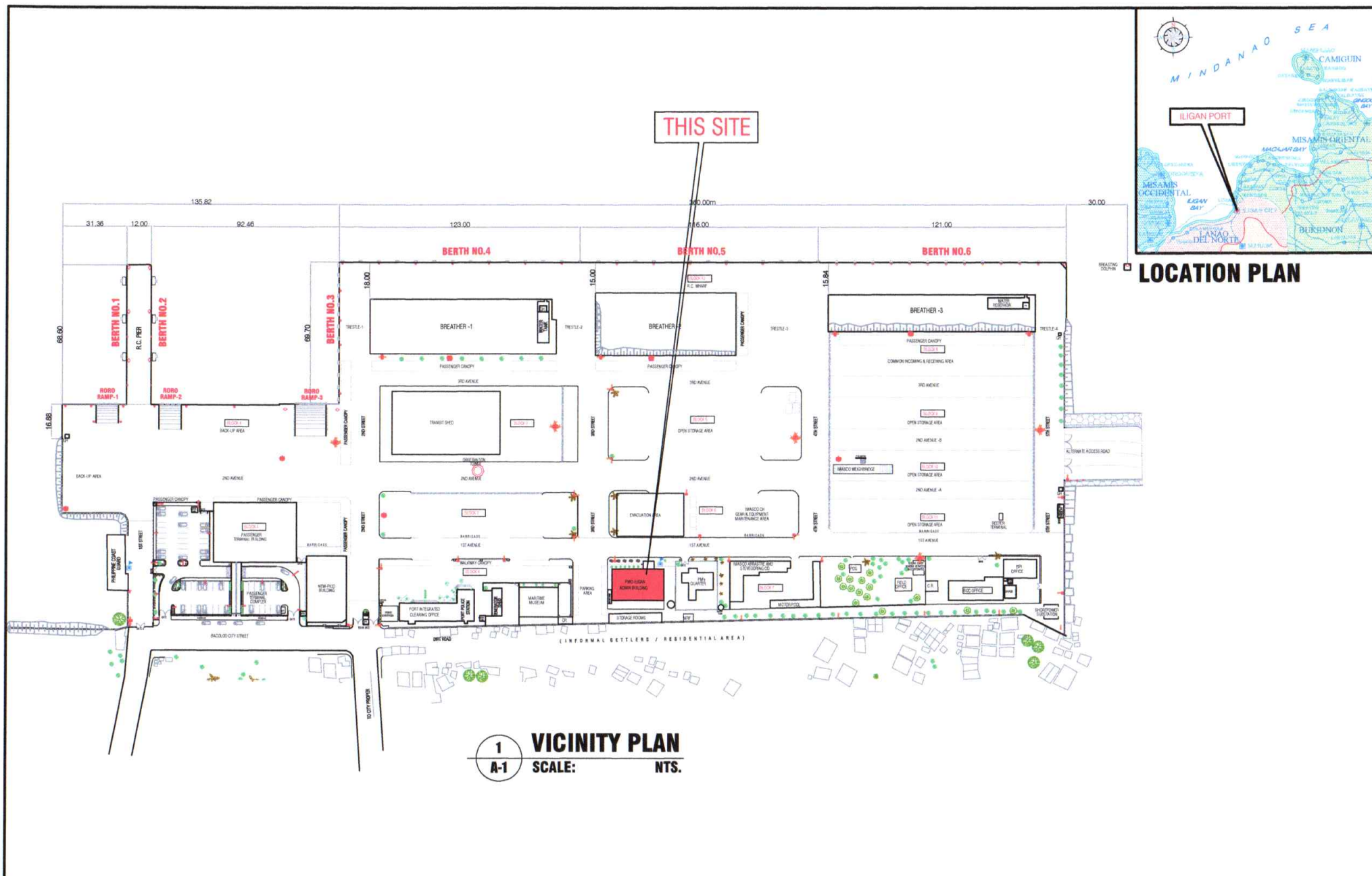
NAME OF THE REPRESENTATIVE OF THE BIDDER	NAME OF BIDDER
POSITION	DATE




**1**  
**A-2** **SITE DEVELOPMENT PLAN**  
**SCALE: 1:100M**

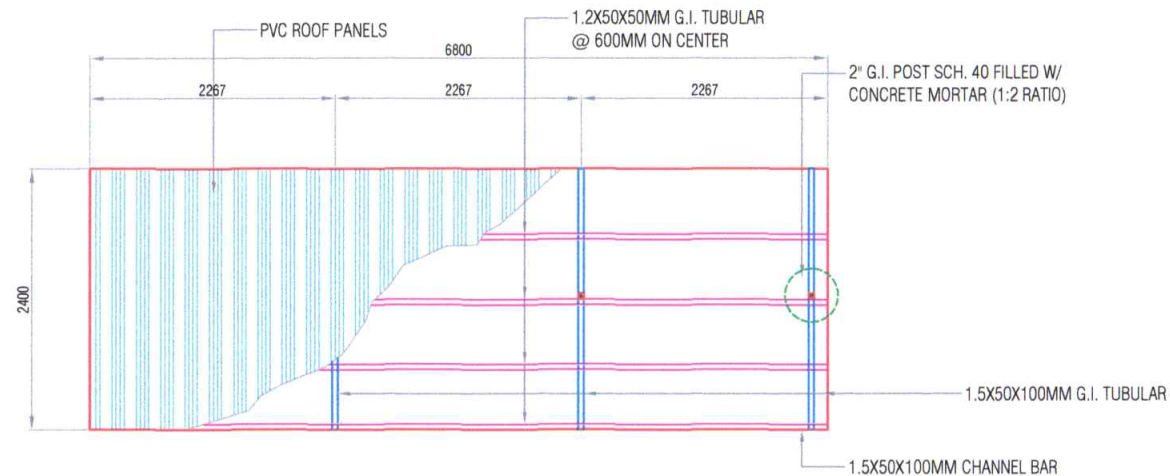


REVISION	TITLE:	REPAIR OF CANOPY AND IMPROVEMENT OF FIRE DETECTION ALARM SYSTEM AT MULTI-PURPOSE HALL				ARCHITECTURAL	SHEET NO.
	LOCATION:	PORT OF ILIGAN, ILIGAN CITY				SHEET CONTENTS	<div><div>2</div><div>3</div></div>
	PREPARED BY:	CHECKED BY:	RECOMMENDED BY:	APPROVED:	● SITE DEVELOPMENT PLAN		
	Signed DENNIS S. CAMBAYA Engineering Assistant A	Signed COLIN KAY R. CAJOTE Supervising Engineer A	Signed JOEL B. ESCALA ESD Manager	Signed MEDARDO I. SOSOBRADO, JR. Acting Port Manager			

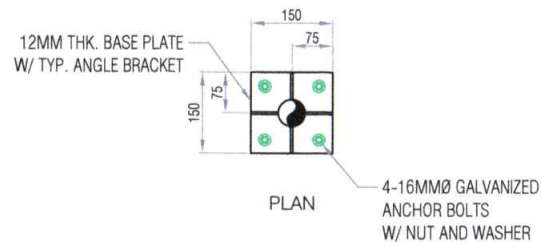
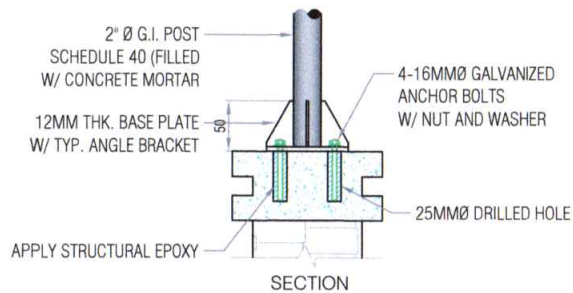


	REVISION	TITLE:	REPAIR OF CANOPY AND IMPROVEMENT OF FIRE DETECTION ALARM SYSTEM AT MULTI-PURPOSE HALL				ARCHITECTURAL	SHEET NO. <div>1 3</div>
		LOCATION:	PORT OF ILIGAN, ILIGAN CITY				SHEET CONTENTS	
		PREPARED BY:	CHECKED BY:	RECOMMENDED BY:	APPROVED:	<ul style="list-style-type: none"><li>● LOCATION PLAN</li><li>● VICINITY PLAN</li></ul>		
		Signed DENNIS S. CAMBAYA Engineering Assistant A	Signed COLIN KAY R. CAJOTE Supervising Engineer A	Signed JOEL B. ESCALA ESD Manager	Signed MEDARDO I. SOSOBRADO, JR. Acting Port Manager			

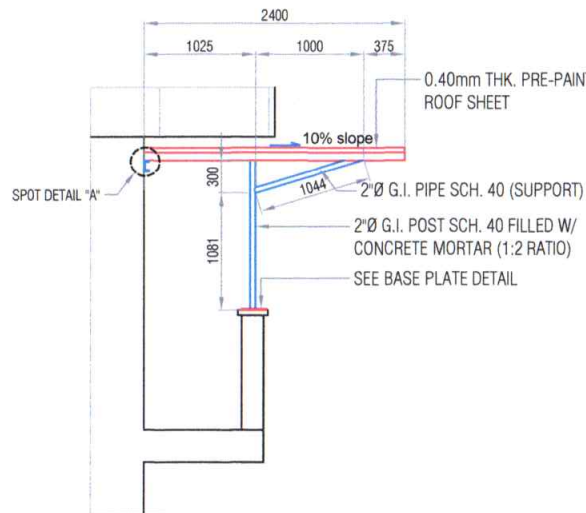




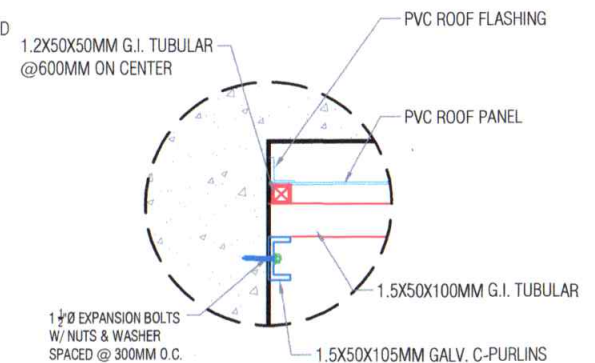
**1 ROOF FRAMING PLAN**  
SCALE: 1:50M



**2 BASE PLATE DETAIL**  
SCALE: 1:10M



**3 ENLARGED SCALE**  
SCALE: 1:50M



**4 SPOT DETAIL "A"**  
SCALE: 1:50M



REVISION	TITLE:	REPAIR OF CANOPY AND IMPROVEMENT OF FIRE DETECTION ALARM SYSTEM AT MULTI-PURPOSE HALL				STRUCTURAL	SHEET NO.
	LOCATION:	PORT OF ILIGAN, ILIGAN CITY				SHEET CONTENTS	<div><div>3</div><div>3</div></div>
	PREPARED BY:	CHECKED BY:	RECOMMENDED BY:	APPROVED:	<div><div>● ROOF FRAMING PLAN</div><div>● BASE PLATE DETAIL</div><div>● ENLARGED SCALE &amp; SPOT DETAIL "A"</div></div>		
	Signed DENNIS S. CAMBAYA Engineering Assistant A	Signed COLIN KAY R. CAJOTE Supervising Engineer A	Signed JOEL B. ESCALA ESD Manager	Signed MEDARDO I. SOSOBRADO, JR. Acting Port Manager			