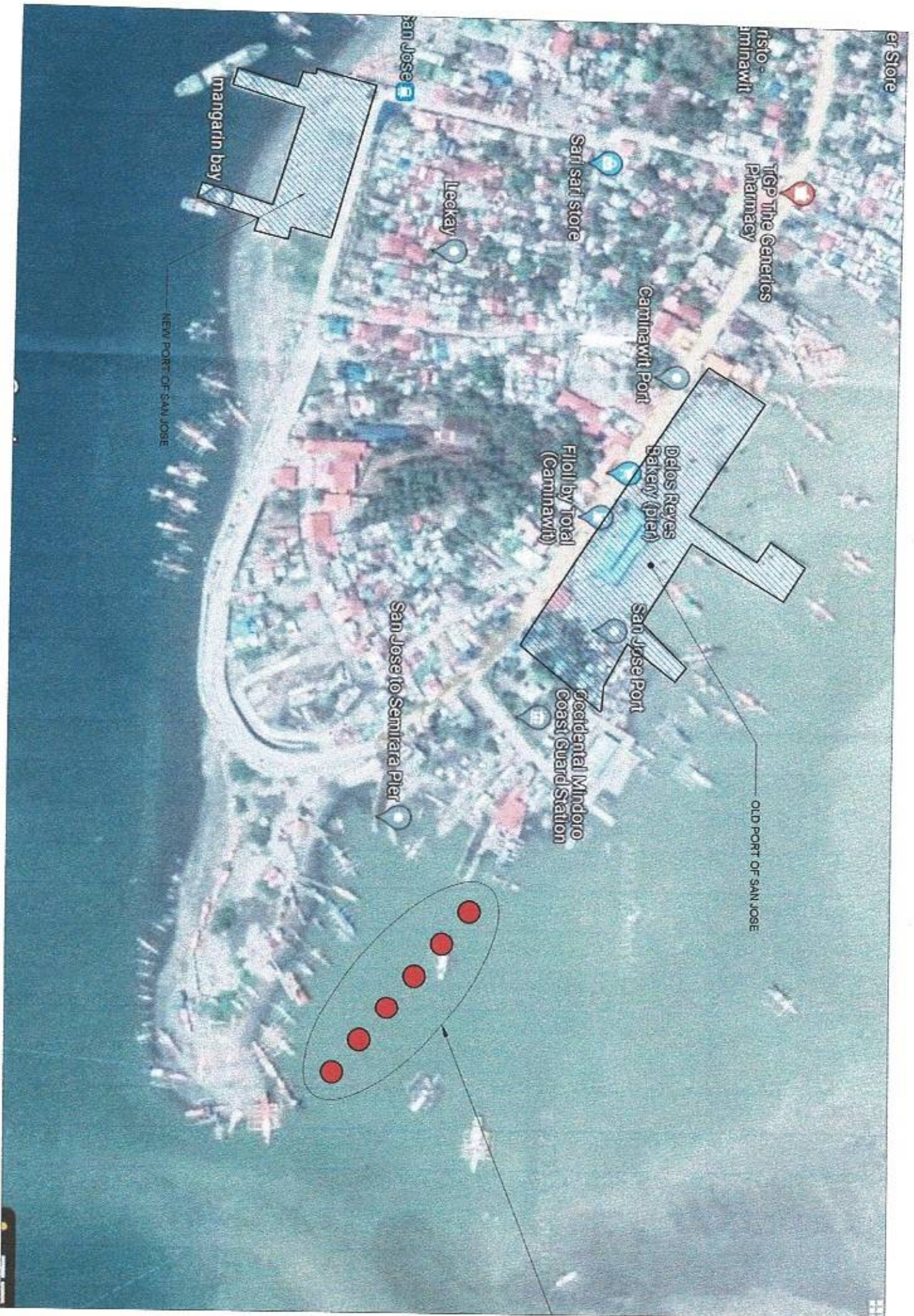




# SUPPLY AND INSTALLATION OF BUOY (NAVIGATIONAL AID) ALONG CHANNEL ENTRANCE GOING TO OLD PORT


PORT OF SAN JOSE, OCCIDENTAL MINDORO



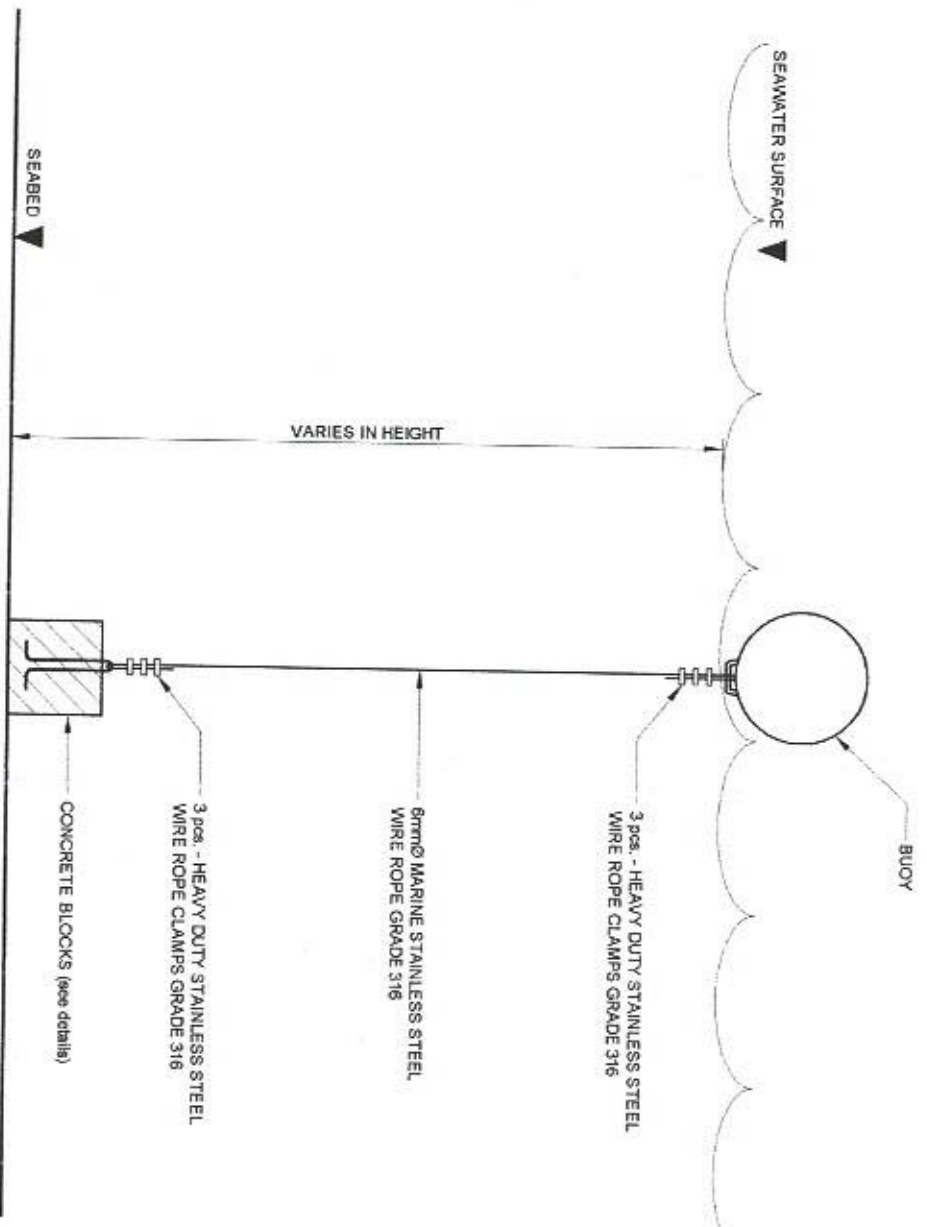


PROPOSED 6-SETS OF  
BUOY (NAVIGATIONAL AID)

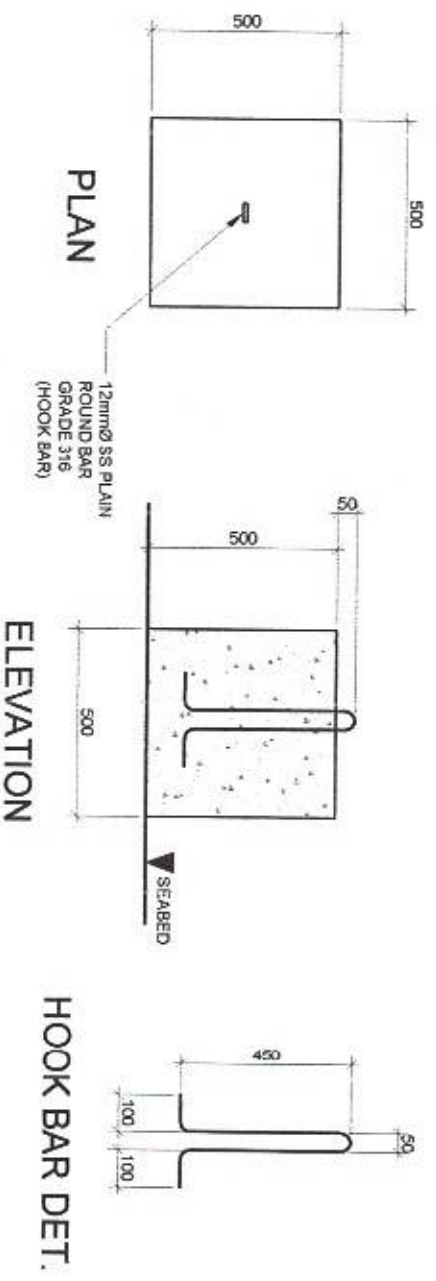
VICINITY MAP  
PORT OF SAN JOSE  
OCCIDENTAL MINDORO  
SCALE NTS.

|  |  |  |  |  |  |   |  |
|--|--|--|--|--|--|---|--|
|  <p>PHILIPPINE PORTS AUTHORITY<br/>PMO - MINDORO</p> |  | <p>PROJECT TITLE:</p> <p>SUPPLY AND INSTALLATION OF BUOY (NAVIGATIONAL AID) ALONG CHANNEL ENTRANCE GOING TO OLD PORT</p> |  | <p>SHEET CONTENTS:</p> <p>AS SHOWN</p>   |  | <p>SCALE:</p> <p>AS SHOWN</p>   |  |
| <p>PREPARED BY:</p> <p>ROMEL C. MALUBAY<br/>Draftsman II</p>   |  | <p>SUBMITTED BY:</p> <p>EMERSON D. QUAIMBAO<br/>Assistant Port Engineer</p>  |  | <p>CHECKED / REVIEWED BY:</p> <p>RONALDO M. MYTBAG<br/>Acting Principal Engineer A</p> |  | <p>RECOMMENDING APPROVAL BY:</p> <p>MARGARITO P. DIMAYAG<br/>Acting Division Manager A, ESD</p> |  |
| <p>APPROVED BY:</p> <p>LEO A. ROMERO<br/>Acting Port Manager A</p>   |  | <p>DATE:</p> <p>27 SEPTEMBER, 2021</p>   |  | <p>SHEET NO.</p> <p>1 of 2</p>   |  | <p>DATE:</p> <p>27 SEPTEMBER, 2021</p>  |  |





BUOY (NAVIGATIONAL AID) DETAIL  
SCALE 1:40 M



CONC. BLOCKS DETAIL  
SCALE 1:20 M

PROJECT TITLE: REPAIR OF WELCOME ARCH, PERIMETER FENCE AND PORT LIGHTING SYSTEM  
PORT OF SAN JOSE, OCCIDENTAL MINDORO

|  |   |   |  |  |                             |                             |
|--|---|---|--|--|-----------------------------|-----------------------------|
| PREPARED BY:<br>ROMEL C. MALUBAY<br>Draftsman II | SUBMITTED BY:<br>EMERSON D. QUAIMBAO<br>Assistant Port Engineer | CHECKED / REVIEWED BY:<br>RONALD O. MAYBAG<br>Acting Principal Engineer A | RECOMMENDING APPROVAL BY:<br>MARGARITO F. DIMAALIG<br>Acting Division Manager A, ESD | APPROVED BY:<br>LEO A. ROMERO<br>Acting Port Manager A | SHEET CONTENTS:<br>AS SHOWN | SCALE:<br>AS SHOWN          |
|  |   |   |  |  | SHEET NO.<br>2 of 2         | DATE:<br>27 SEPTEMBER, 2021 |

