

PHILIPPINE
PORTS
AUTHORITY



PMO- MINDORO

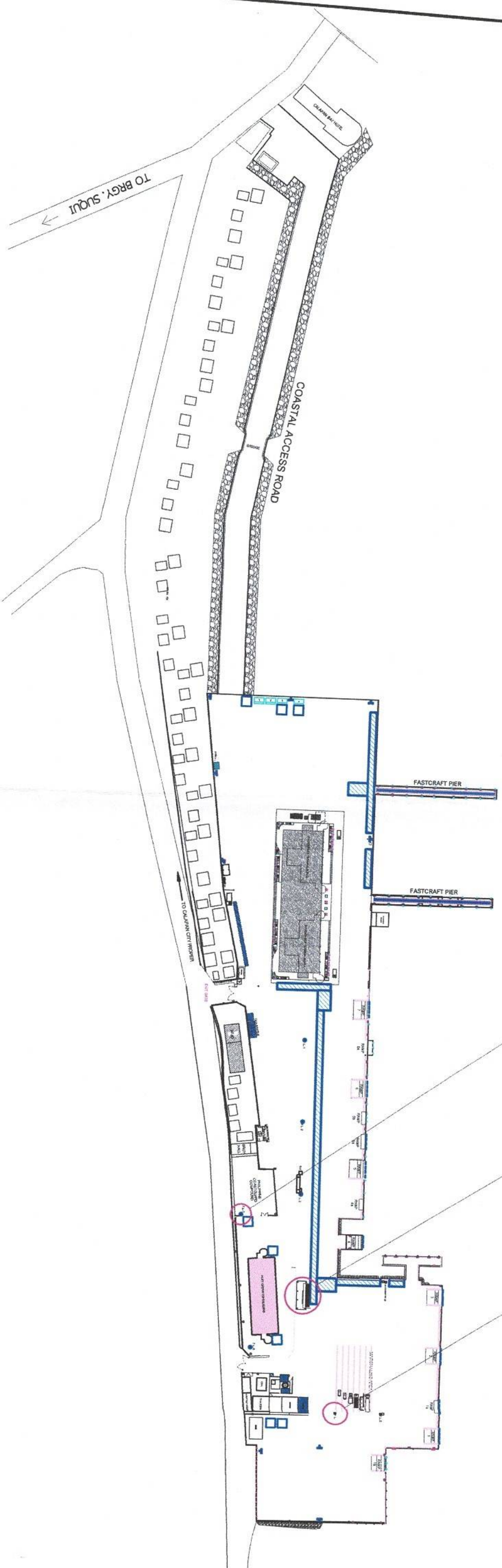
REPAIR OF DAMAGED HIGH MAST TOWER
AND REMOVAL OF THE TICKETING BOOTH

PORT OF CALAPAN, ORIENTAL MINDORO


PROP. LOCATION OF HIGH MAST TOWER TO BE INSTALLED
See detail of conc. pedestal & foundation including lighting fixtures to be installed

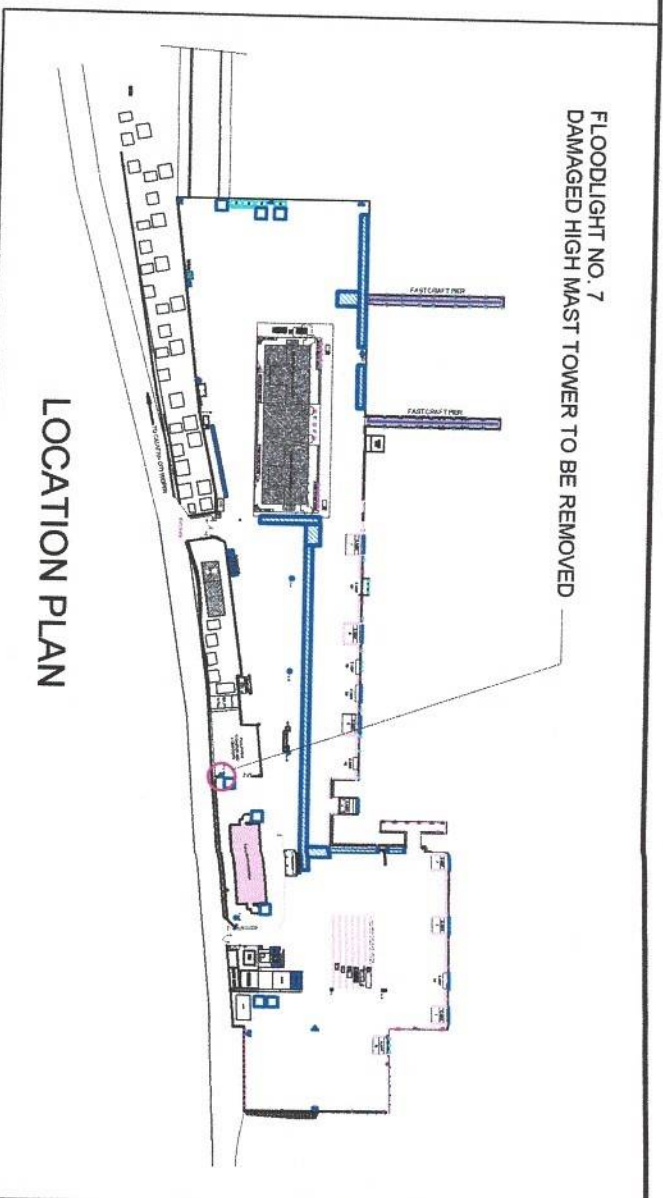
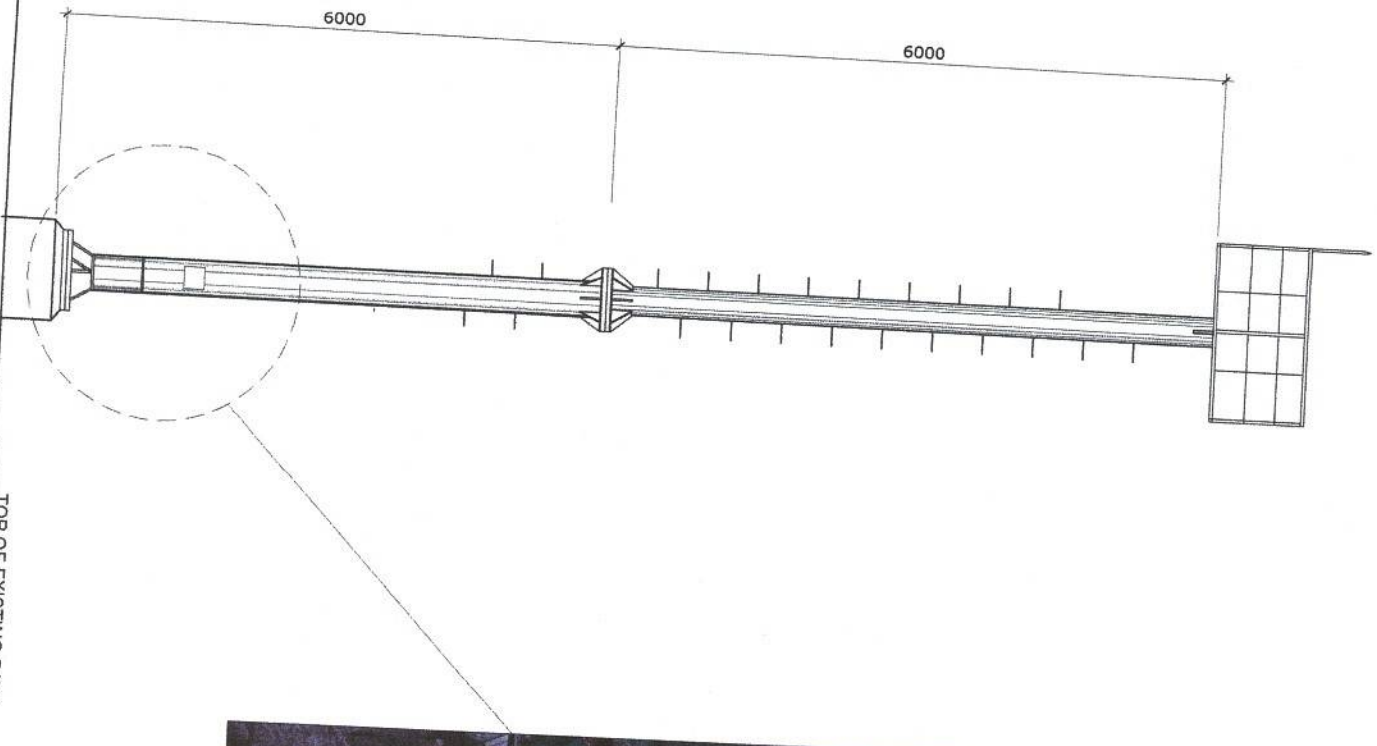
TICKETING BOOTH TO BE REMOVED

FLOODLIGHT NO. 7
DAMAGED HIGH MAST TOWER TO BE REMOVED



DEVELOPMENT PLAN
PORT OF CALAPAN
ORIENTAL MINDORO
SCALE: 1:100 M.

 <p>PHILIPPINE PORTS AUTHORITY PMO-MINDORO</p>		<p>PROJECT TITLE: REPAIR OF DAMAGED HIGH MAST TOWER AND REMOVAL OF THE TICKETING BOOTH PORT OF CALAPAN, ORIENTAL MINDORO</p>		<p>SHEET CONTENTS: AS SHOWN</p>	
<p>PREPARED BY: <i>[Signature]</i> FERNANDO J. GALVEZO Engineering Assistant A</p>		<p>SUBMITTED BY: <i>[Signature]</i> JESSIE J. MERILLO Engineer B</p>		<p>RECOMMENDING APPROVAL: <i>[Signature]</i> MARGARITO P. DIMAILIG Acting Division Manager A, ESD</p>	
<p>CHECKED / REVIEWED BY: <i>[Signature]</i> RONALDO O. MATIBAG Acting Principal Engineer A</p>		<p>APPROVED: <i>[Signature]</i> LEO A. ROMERO Acting Port Manager A</p>		<p>SCALE: AS SHOWN SHEET NO. 1 of 5 DATE: 25 APRIL 2022</p>	



LOCATION PLAN



PROJECT TITLE:

REPAIR OF DAMAGED HIGH MAST TOWER AND REMOVAL OF THE TICKETING BOOTH
PORT OF CALAPAN, ORIENTAL MINDORO

PREPARED BY:

FERNANDO J. GALVEZO
Engineering Assistant A

SUBMITTED BY:

JESSIE J. MERILLO
Engineer B

CHECKED / REVIEWED BY:

RONALD O. MAYBAG
Acting Principal Engineer A

RECOMMENDING APPROVAL:

MARGARITO B. DIMALILIG
Acting Division Manager A, ESD

APPROVED:

LEO A. ROMERO
Acting Port Manager A

SHEET CONTENTS:

AS SHOWN

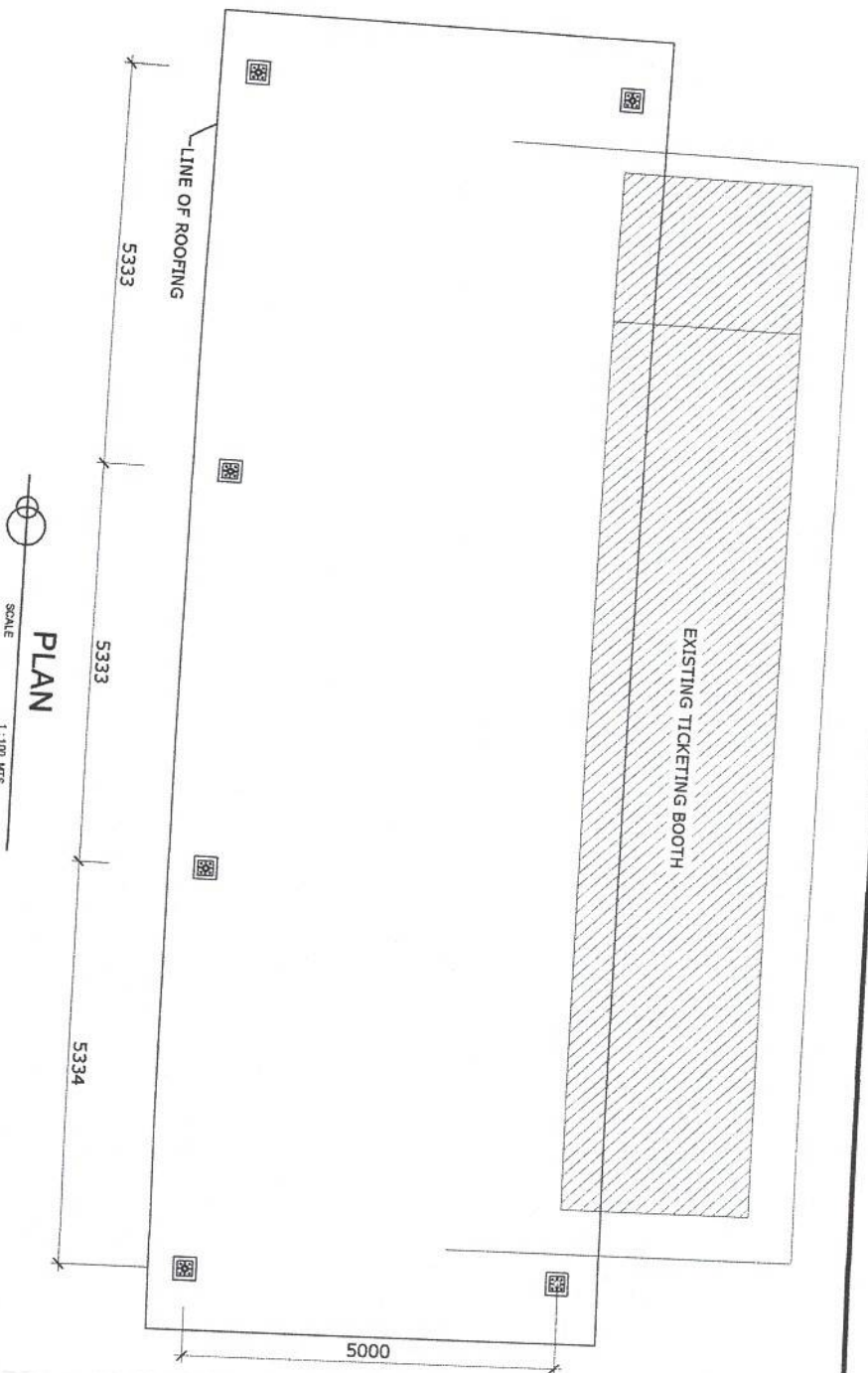
SCALE:
AS SHOWN

SHEET NO.
2 of 5

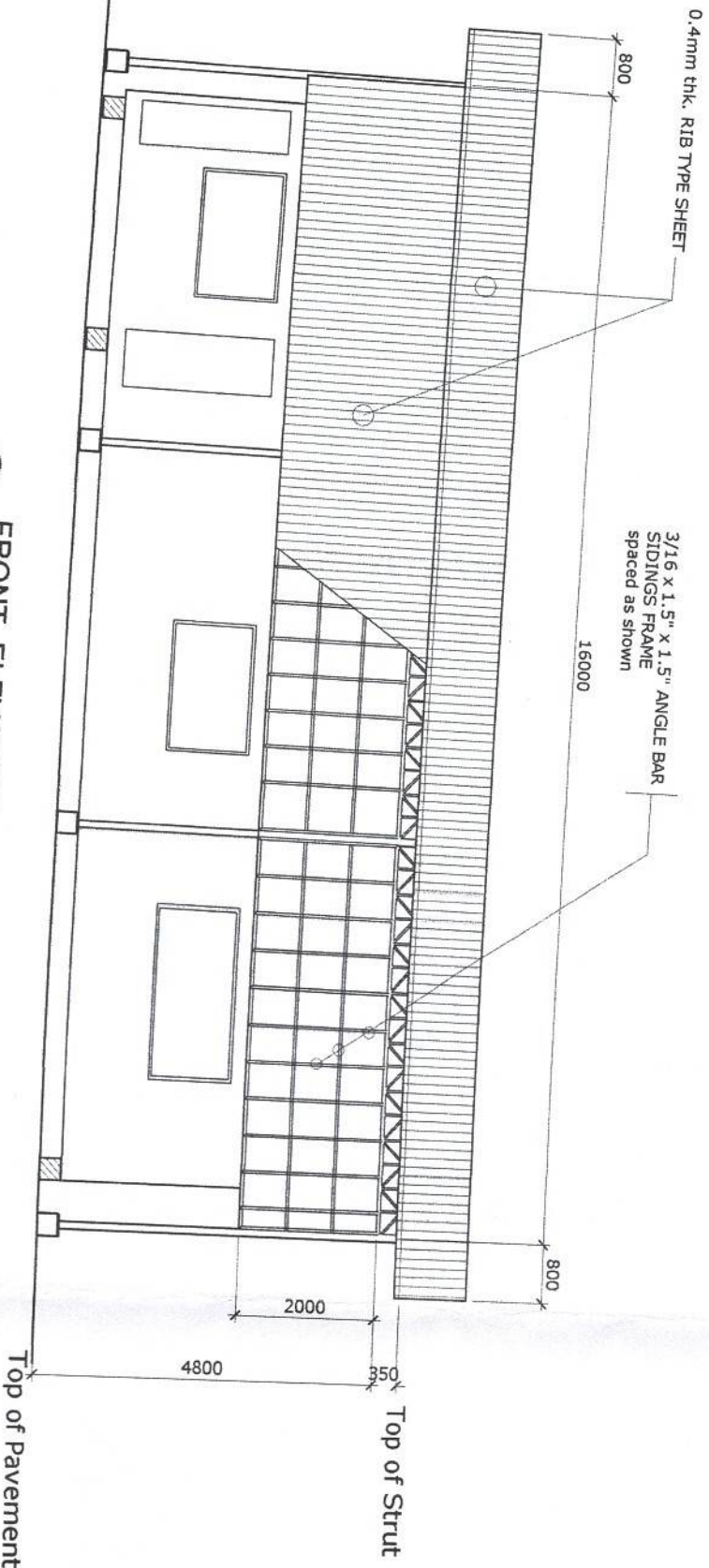
DATE:

25 APRIL 2022





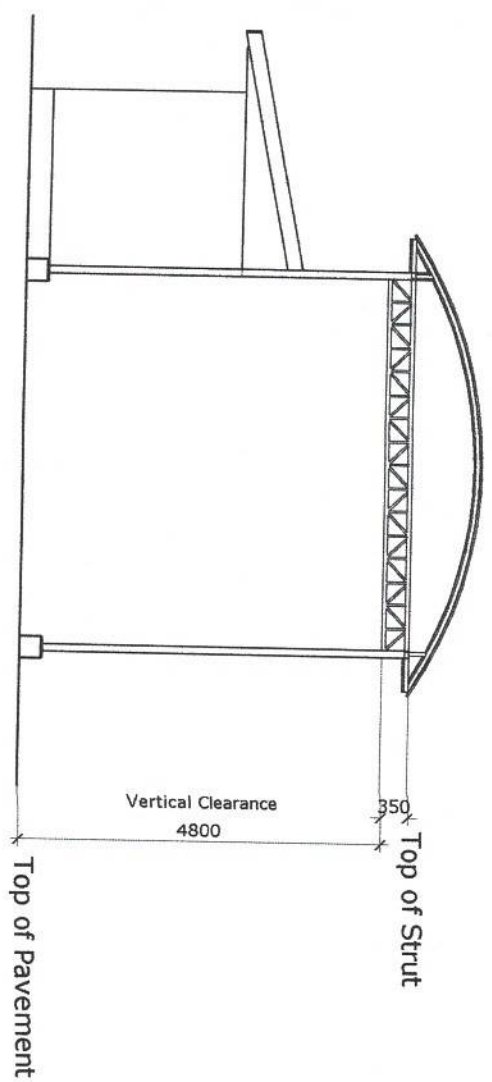
PLAN
SCALE 1:100 MTS.



FRONT ELEVATION
SCALE 1:100 MTS.



TICKETING BOOTH TO BE REMOVED / DEMOLISHED



TYPICAL FRONT & REAR ELEV.
SCALE 1:100 MTS.

PROJECT TITLE: REPAIR OF DAMAGED HIGH MAST TOWER AND REMOVAL OF THE TICKETING BOOTH
PORT OF CALAPAN, ORIENTAL MINDORO



PREPARED BY:
FERNANDO J. GALVEZO
Engineering Assistant A

SUBMITTED BY:
JESSIE U. MERILLO
Engineer B

CHECKED / REVIEWED BY:
RONALD O. MAYBAG
Acting Principal Engineer A

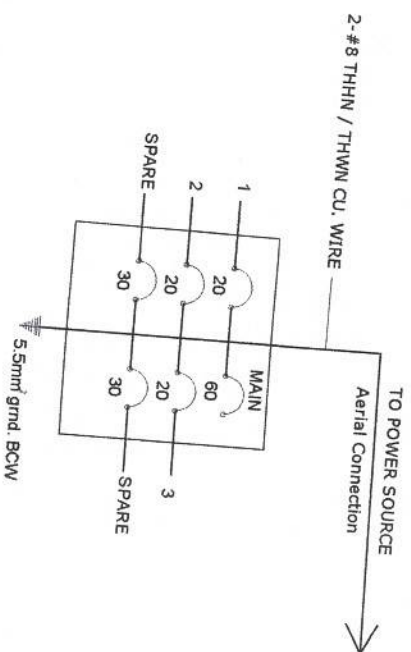
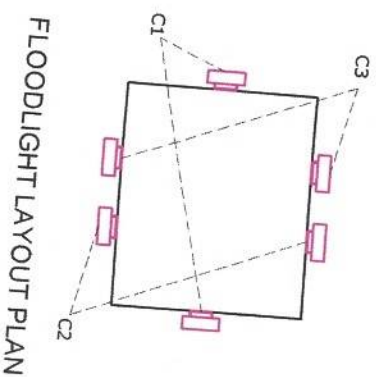
RECOMMENDING APPROVAL:
MARGARITO P. DIMALIG
Acting Division Manager A, ESD

APPROVED:
LEO A. ROMERO
Acting Port Manager A

SHEET CONTENTS:
AS SHOWN

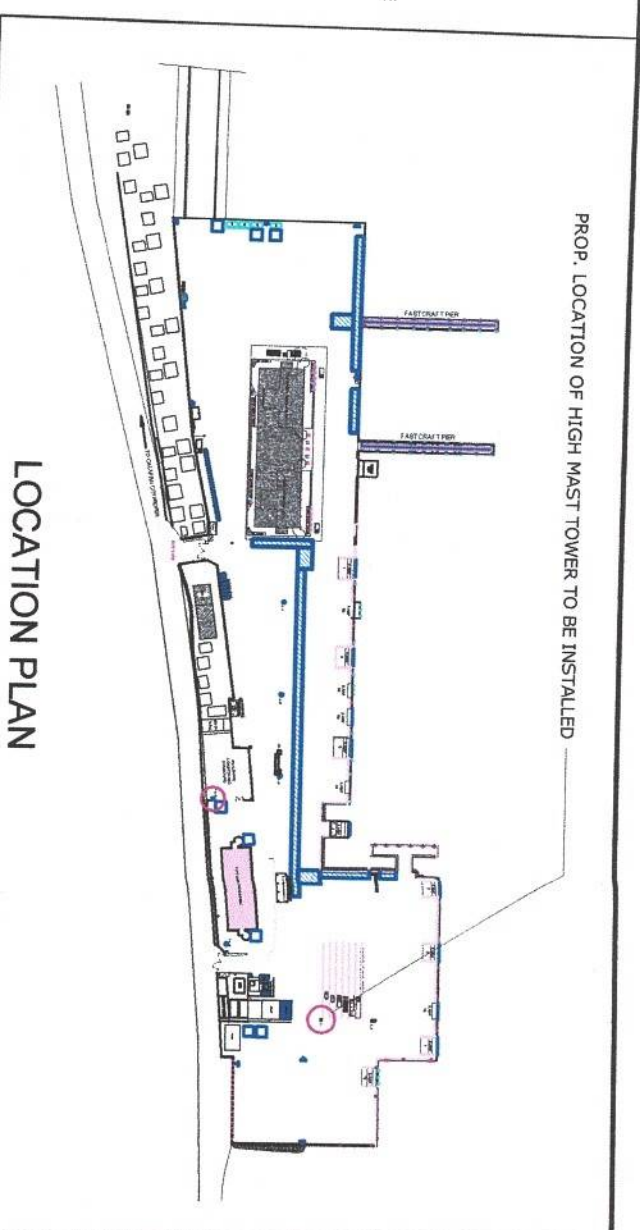
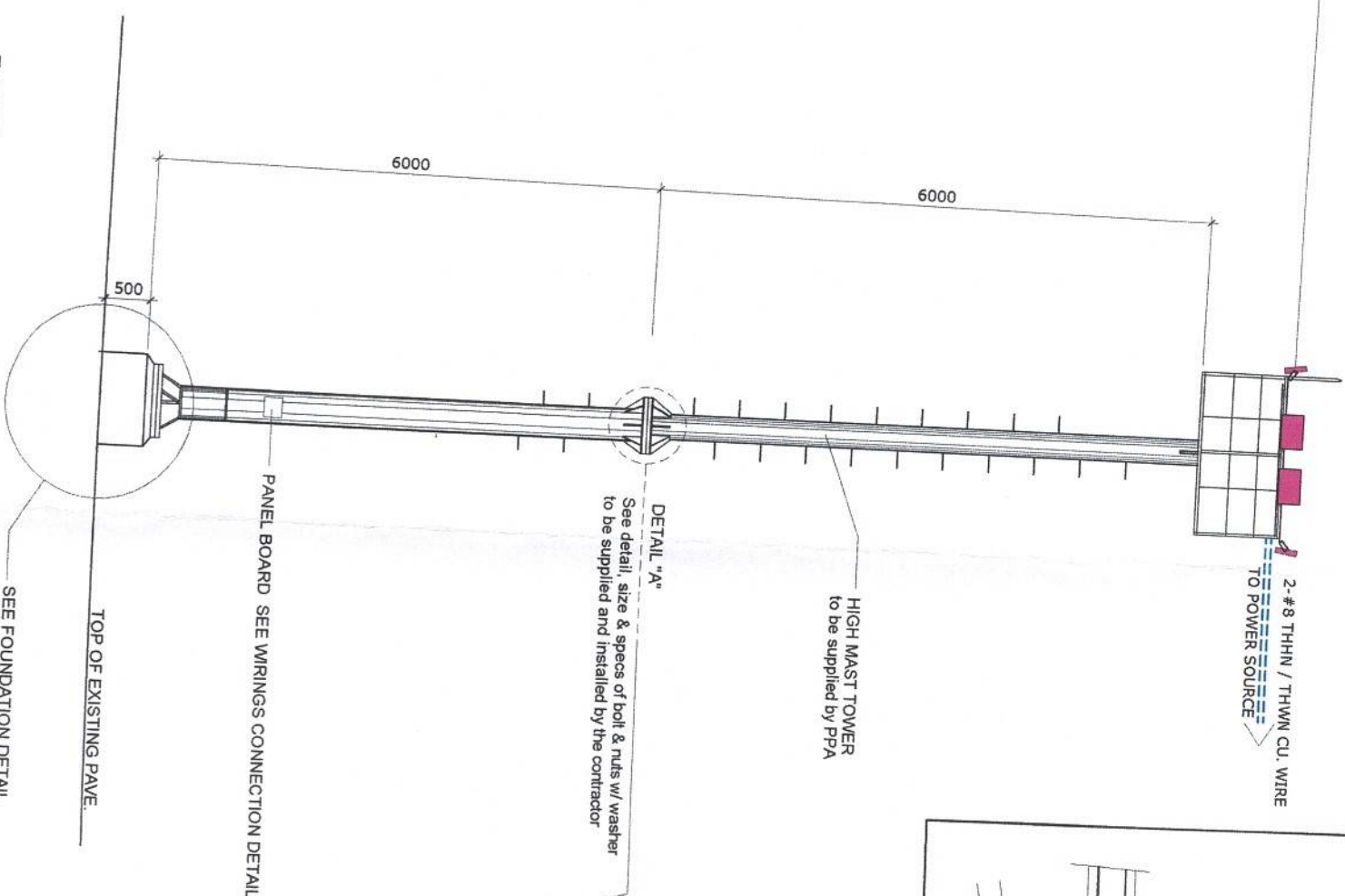
SCALE: AS SHOWN
SHEET NO. 3 of 5
DATE: 25 APRIL 2022

200 watts HIGH MAST FLOODLIGHTS
220 volts, Cool White, Cree led Chip
RoHS Complaint, IP67



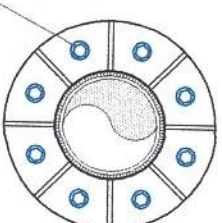
PANEL BOARD (Outdoor Type)

DETAIL OF 12.00 METER HIGH MAST TOWER
SCALE 1 : 75 M.



8 - 20mmØ X 4" GALVANIZED BOLTS & NUTS
W/ WASHER

PLAN



ELEVATION

DETAIL "A"



SCALE 1:20 M

PROJECT TITLE: REPAIR OF DAMAGED HIGH MAST TOWER AND REMOVAL OF THE TICKETING BOOTH
PORT OF CALAPAN, ORIENTAL MINDORO



PREPARED BY: FERNANDO J. GALVEZO
Engineering Assistant A

SUBMITTED BY: JESSIE J. MERILLO
Engineer B

CHECKED / REVIEWED BY: RONALD O. MAYA
Acting Principal Engineer A

RECOMMENDING APPROVAL: MARGARITO P. DIMALIG
Acting Division Manager A, ESD

APPROVED: LEO A. ROMERO
Acting Port Manager A

SHEET CONTENTS: AS SHOWN
SHEET NO. 4 of 5
DATE: 25 APRIL 2022