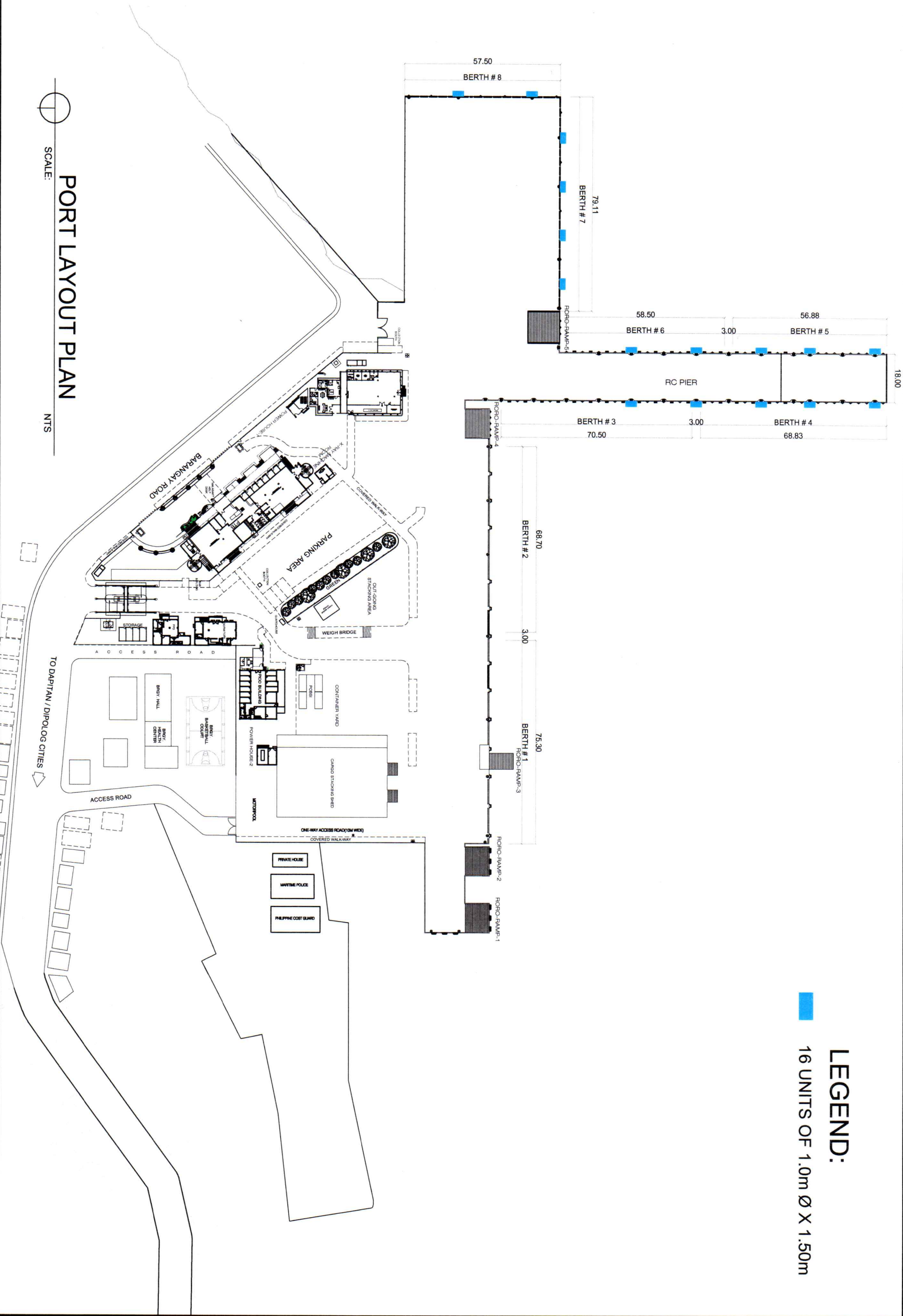
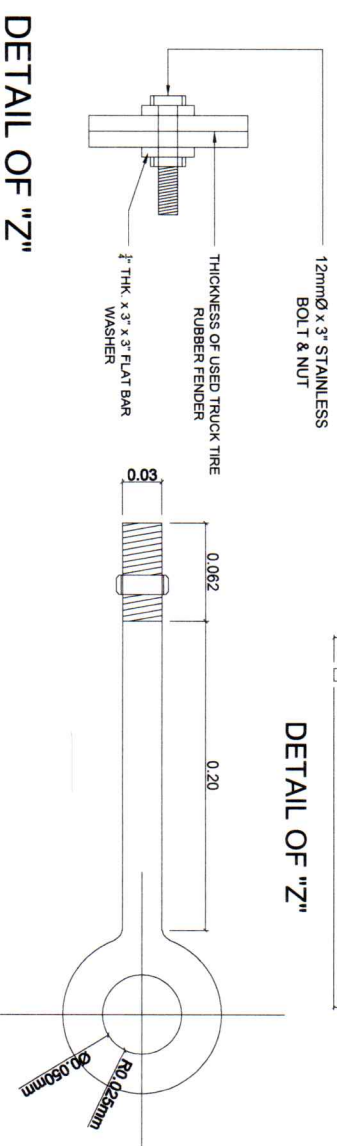
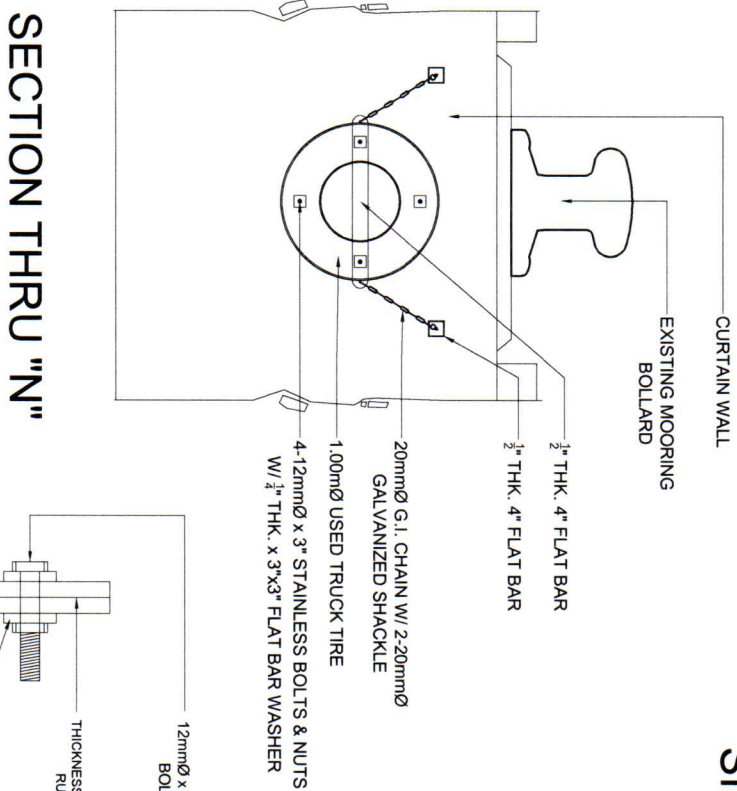
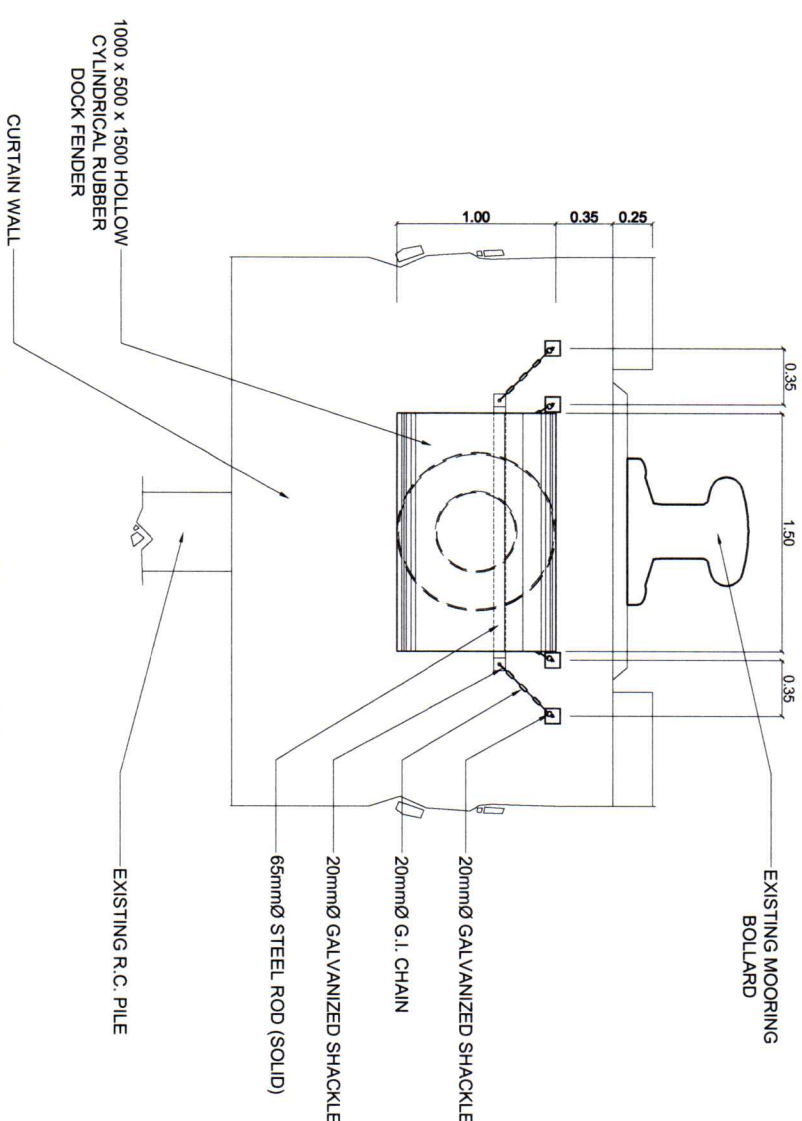
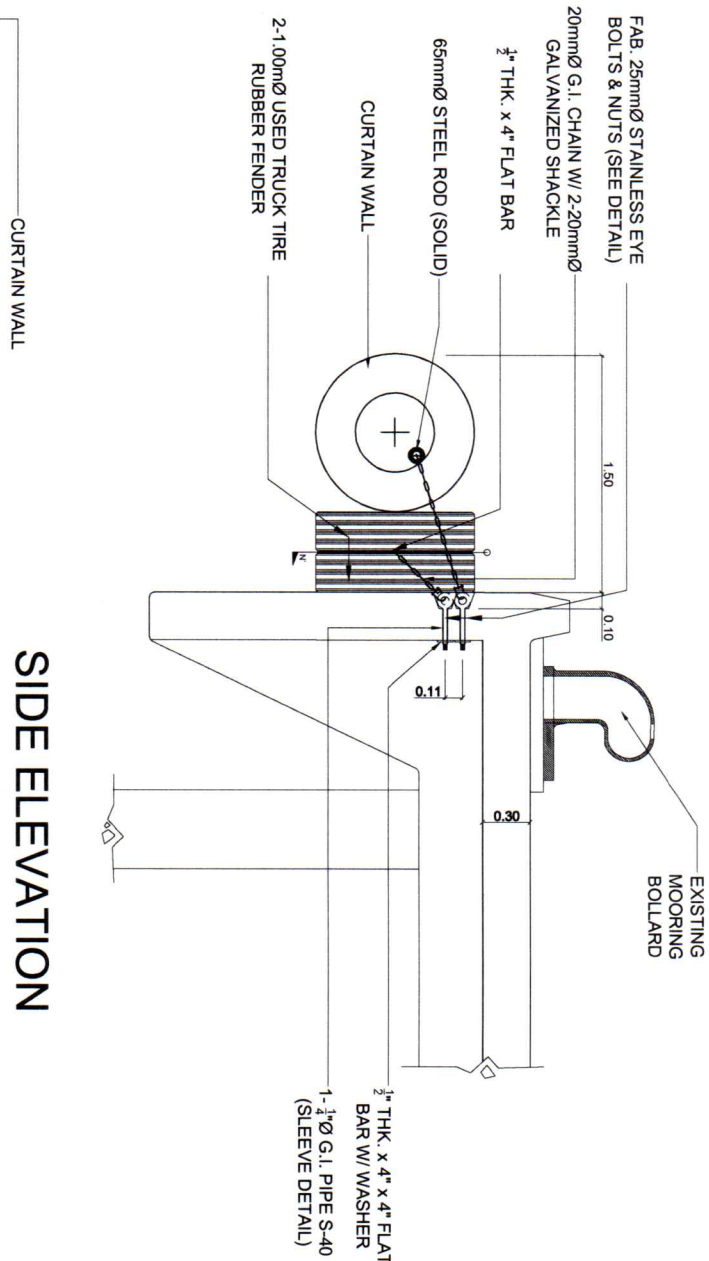
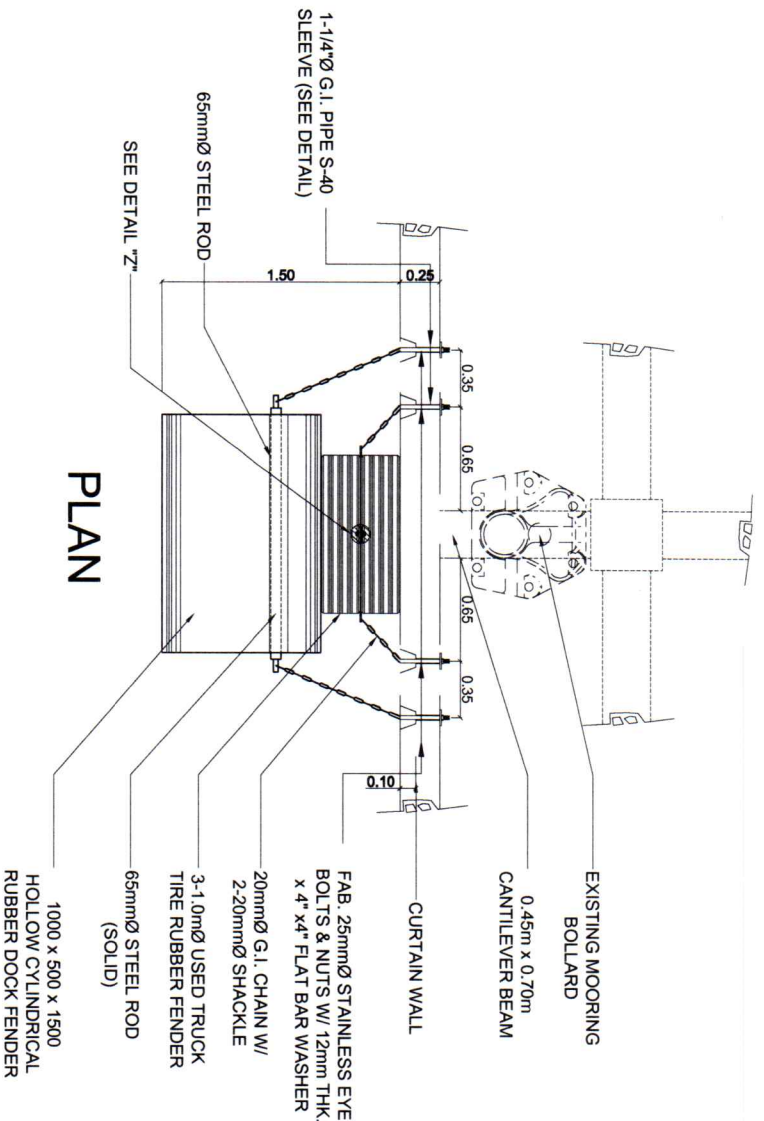


LEGEND:
16 UNITS OF 1.0m Ø X 1.50m



PORT LAYOUT PLAN
SCALE: NTS

BAGONG PILIPINAS		PHILIPPINE PORTS AUTHORITY		DAPTAN, ZAMBANGA DEL NORTE		SCALE: NTS	
TITLE/LOCATION:		PREPARED BY:		CHECKED BY:		REVIEWED BY:	
PROVISION OF CYLINDRICAL RDF ALONG BERTH 3 TO 8 AND REPAIR OF RC CURB WITH PAINTING AT VARIOUS LOCATION.		AR. MOHAMMAD A. ESPINA ELECTRICIAN FOREMAN (OUTSOURCED)		ENGR. BRYAN E. BALLON SENIOR ENGINEER-IA		ENGR. DIOSDADO U. ARANAYDO PRINCIPAL ENGINEER-IA	
RECOMMENDING APPROVAL:		APPROVED BY:		SHEET NO.		01	
ENGR. ABDURASAD S. HASAN ESD MANAGER		ENGR. SUBANRIO I. LIM PORT MANAGER		03			



FRONT ELEVATION

SIDE ELEVATION

SECTION THRU "N"

DETAIL OF "Z"

FAB. 25mmØ STAINLESS EYE BOLT & NUT

TITLE/LOCATION:

PREPARED BY:

CHECKED BY:

REVIEWED BY:

RECOMMENDING APPROVAL:

APPROVED BY:

SHEET NO.



PROVISION OF CYLINDRICAL
RDF ALONG BERTH 3 TO 8 AND
REPAIR OF RC CURB WITH
PAINTING AT VARIOUS
LOCATION.

AR. MOHAMMAD A. ESPINA
ELECTRICIAN FOREMAN
(OUTSOURCED)

ENGR. BRYAN E. BALLON
SENIOR ENGINEER-A

ENGR. DIOSDADO U. ARANAYDO
PRINCIPAL ENGINEER-A

ENGR. ABDURASAD S. HASAN
ESD MANAGER

ENGR. SUBANRIO I. LIM
PORT MANAGER

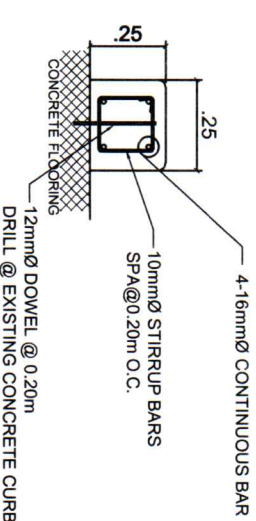
02

03

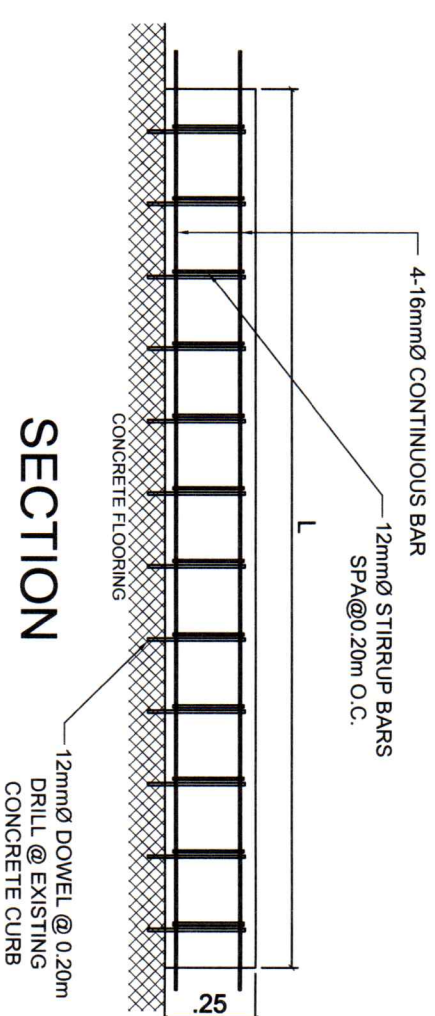
RECONSTRUCTION
OF DAMAGED
CONCRETE
CURB

- NOTE:
1. RECONSTRUCTION OF DAMAGED RC CURB. L= 14.4M
 2. PLASTERING MINOR DAMAGED RC CURBS (435.3 Ln.m)
 3. PAINTING ALL CURBS (L=449.7)

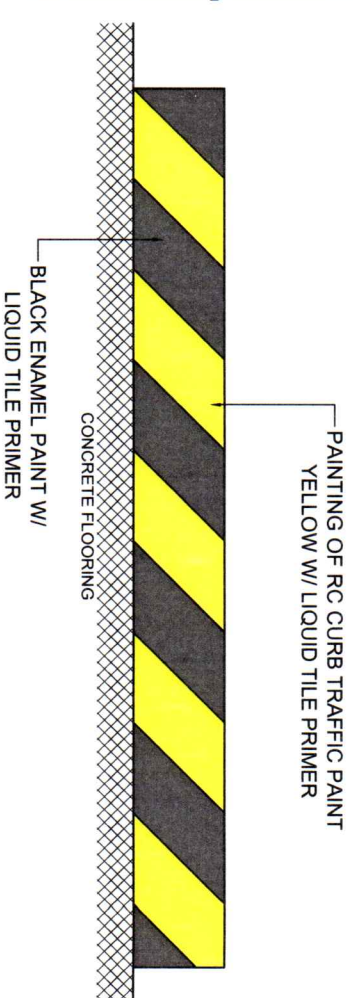
PLAN



SECTION



ELEVATION

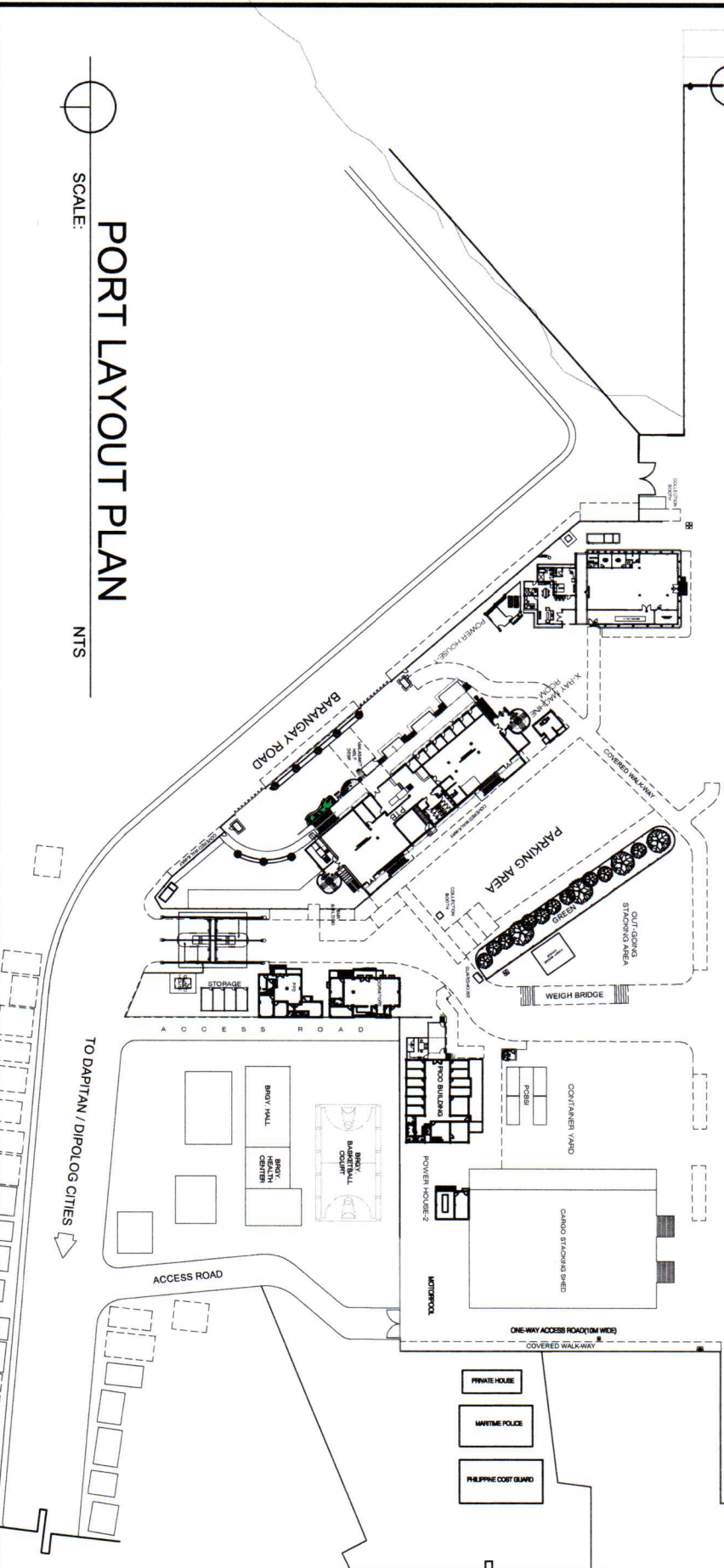


DETAIL OF CONCRETE CURB

SCALE: NTS

PORT LAYOUT PLAN

SCALE: NTS



TITLE/LOCATION:

PREPARED BY:

CHECKED BY:

REVIEWED BY:

RECOMMENDING APPROVAL:

APPROVED BY:

SHEET NO



PROVISION OF CYLINDRICAL
RDF ALONG BERTH 3 TO 8 AND
REPAIR OF RC CURB WITH
PAINTING AT VARIOUS
LOCATION.

AR. MOHAMMAD A. ESPINA
ELECTRICIAN FOREMAN
(OUTSOURCED)

ENGR. BRYAN E. BALLON
SENIOR ENGINEER-A

ENGR. DIOSDADO U. ARANAYDO
PRINCIPAL ENGINEER-A

ENGR. ABDURASAD S. HASAN
ESD MANAGER

ENGR. SUBANRIO I. LIM
PORT MANAGER

03