

NOTE:
1. WORK INCLUDES SURFACE PREPARATION/CLEANING
PRIOR TO REPAINTING.

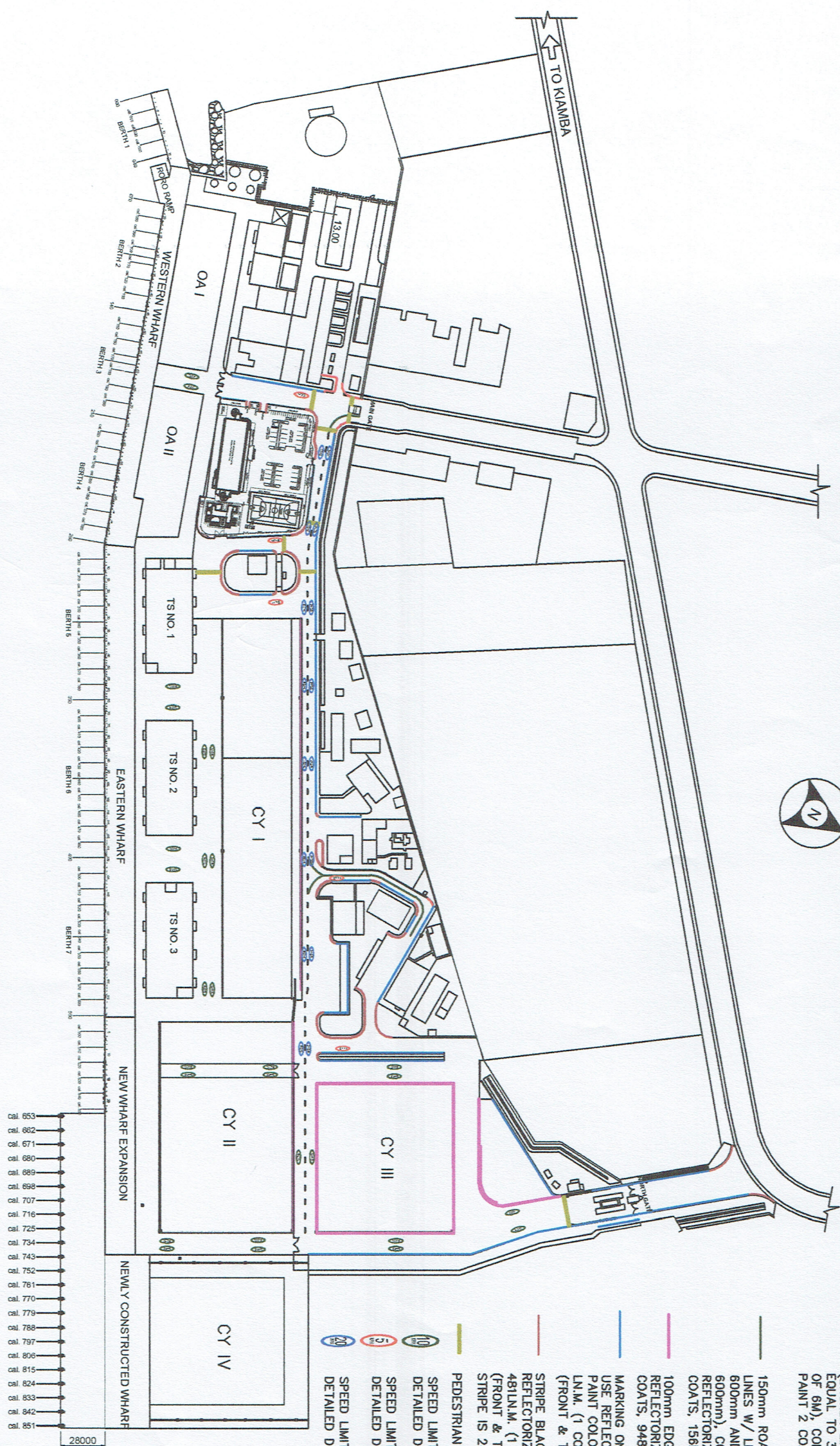
TO MARBEL/GENSAN

TO GEN. SANTOS CITY



LEGEND:

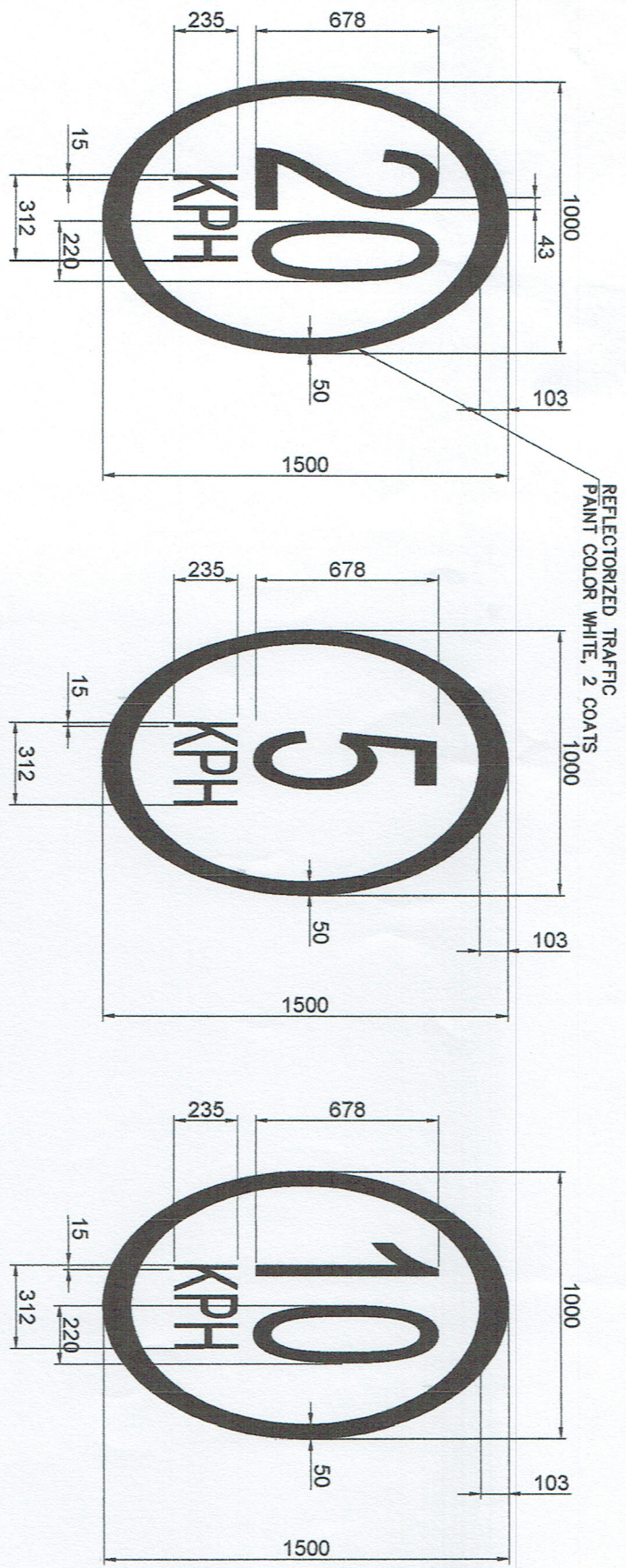
- 150mm ROAD CENTER LINE (BROKEN LINES W/ LINE SEGMENT EQUAL TO 3M AND UNIFORM GAP OF 60mm), COLOR WHITE REFLECTORIZED TRAFFIC PAINT 2 COATS, 156L.N.M.
- 100mm EDGE LINE, COLOR WHITE REFLECTORIZED TRAFFIC PAINT 2 COATS, 948L.N.M.
- MARKING ON CONC. CURBS - USE REFLECTORIZED TRAFFIC PAINT COLOR YELLOW, 1355 L.N.M. (1 COAT), 2 - SURFACE (FRONT & TOP) @ 200MM/SURFACE STRIPE BLACK & YELLOW ON CURBS, REFLECTORIZED TRAFFIC PAINT, 481L.N.M. (1 COAT), 2-SURFACE (FRONT & TOP) @ 200MM/SURFACE STRIPE IS 240MM WIDTH)
- PEDESTRIAN LANE (SEE DETAIL)
- SPEED LIMIT MARKING (SEE DETAILED DRAWING, 28 UNITS)
- SPEED LIMIT MARKING (SEE DETAILED DRAWING, 5 UNITS)
- SPEED LIMIT MARKING (SEE DETAILED DRAWING, 16 UNITS)



LOCATION SHOWING ROAD LANES, PEDESTRIAN LANES, CONCRETE CURB, PERIMETER FENCE AND CENTER LANES
SCALE 1:3000

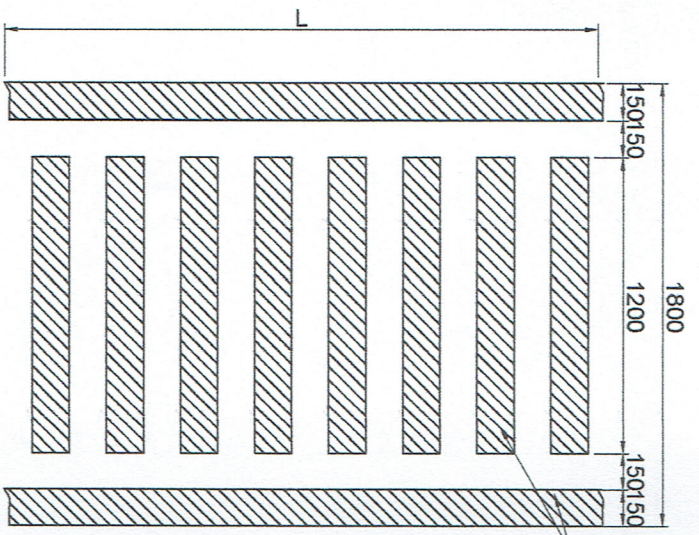
PROJECT TITLE	REPAINTING OF ROAD LANES, PEDESTRIAN LANES, RC CURB AND MARKING OF SPEED LIMIT	PREPARED BY:	JOE CARLO I. SORIANO ENGINEERING ASSISTANT A	CHECKED BY:	CHARMAINE DUNE MANTOYA SUPERVISING ENGINEER A	REVIEWED BY:	MARIA VIVIEN M. TANCO PRINCIPAL ENGINEER A	CONFORMED:	DEOLIBERTO PEREZ PRD MANAGER	RECOMMENDING APPROVAL:	JAMESON LEE ASD MANAGER	APPROVED BY:	ATTY. CES. B. MENDOZA PORT MANAGER	SHEET CONTENT:	1. LOCATION PLAN SHOWING ROAD LANES, PEDESTRIAN LANES, CONCRETE CURB, PERIMETER FENCE AND CENTER LANES	DATE:	1/12
---------------	--	--------------	---	-------------	--	--------------	---	------------	---------------------------------	------------------------	----------------------------	--------------	---------------------------------------	----------------	--	-------	------





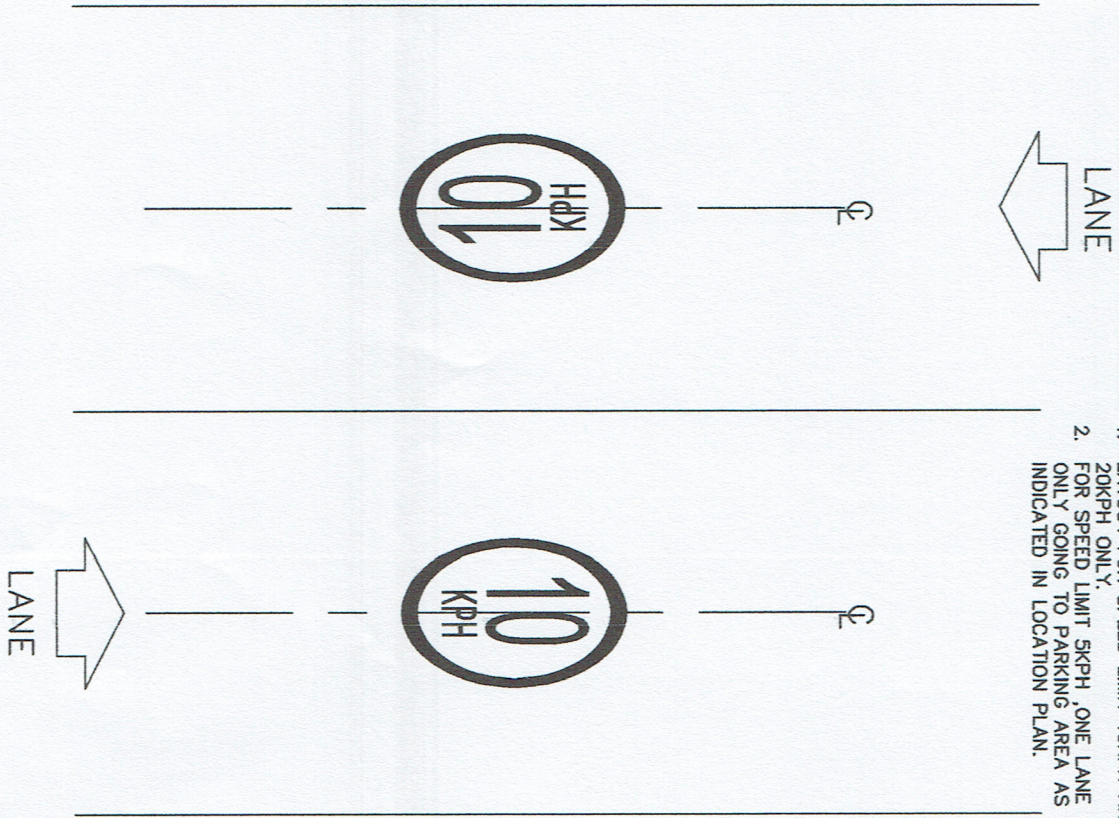
SPEED LIMIT MARKING DETAIL
SCALE 1:25

NOTE:
1. LAYOUT FOR SPEED LIMIT 10KPH AND 20KPH ONLY.
2. FOR SPEED LIMIT 5KPH, ONE LANE ONLY GOING TO PARKING AREA AS INDICATED IN LOCATION PLAN.



PEDESTRIAN LANE SCHEDULE	
MARK	LOCATION
1	5500mm GUARDHOUSE AT MAIN GATE
2	5900mm GUARDHOUSE AT MAIN GATE
3	12500mm WALKWAY SHED TO SULPICIO WAREHOUSE
4	14600mm PRE-FAB TO SULPICIO WAREHOUSE
5	14600mm FORMER WGA WAREHOUSE TO SULPICIO WAREHOUSE
6	8000mm WALKWAY SHED TO SULPICIO WAREHOUSE, NEAR HARBOR AREA
7	10500mm WALKWAY SHED TO HARBOR AREA
8	8800mm SULPICIO WAREHOUSE TO HARBOR AREA
9	16000mm HARBOR TO PTB / TRANSIT SHED NO.1
10	20000mm NEAR NORTH GATE AREA

PEDESTRIAN LANE DETAIL (TYPICAL)
SCALE 1:30



SPEED LIMIT MARKING LAYOUT
SCALE 1:100

PROJECT TITLE REPAINTING OF ROAD LANES, PEDESTRIAN LANES, RC CURB AND MARKING OF SPEED LIMIT		PREPARED BY: JOSEPH O. SORIANO ENGINEERING ASSISTANT A		CHECKED BY: CHARMAINE DUNE L. MANTOYA SUPERVISING ENGINEER		REVIEWED BY: MARIA VIVEN M. TANCO PRINCIPAL ENGINEER		CONFORMED: DEOLITA B. TORRES PORT MANAGER		RECOMMENDING APPROVAL: JAMESON L. LEE ESD MANAGER		APPROVED BY: ATTY. CESAR M. L. MAYA PORT MANAGER		SHEET CONTENT: 1. SPEED LIMIT MARKING DETAIL 2. SPEED LIMIT MARKING LAYOUT 3. PEDESTRIAN DETAIL		DATE: 2/2	
--	--	---	--	---	--	---	--	--	--	--	--	---	--	---	--	---------------------	--