

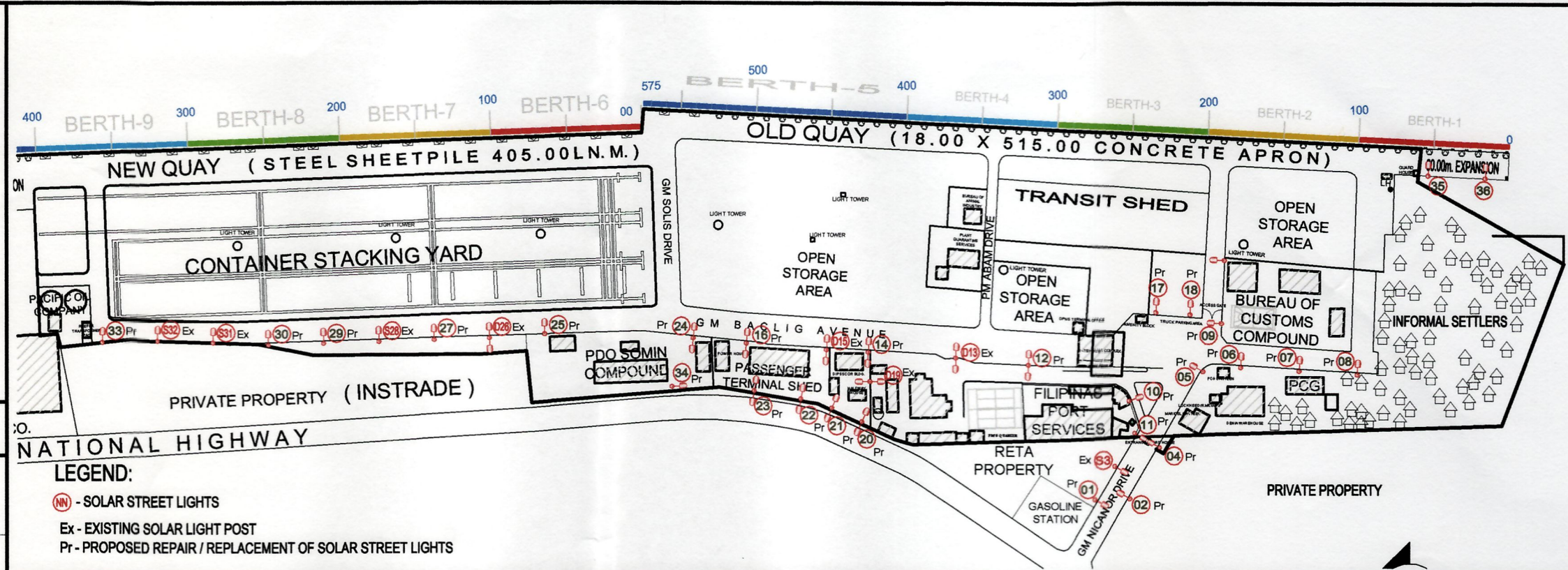
01.1 PORT LOCATION MAP  
SCALE 1: NMMETERS

SHT. NO.	DESCRIPTION
01	PORT LOCATION MAP, SHEET CONTENTS, TABULATION, LOCATION PLAN, EXISTING DOUBLE ARM STREET LIGHT-ELEVATION & EXISTING SINGLE ARM STREET LIGHT-ELEVATION
02	SPECIFICATIONS, DOUBLE SEMI-INTEGRATED SOLAR STREET LIGHT - ELEVATION & SINGLE SEMI-INTEGRATED SOLAR STREET LIGHT - ELEVATION

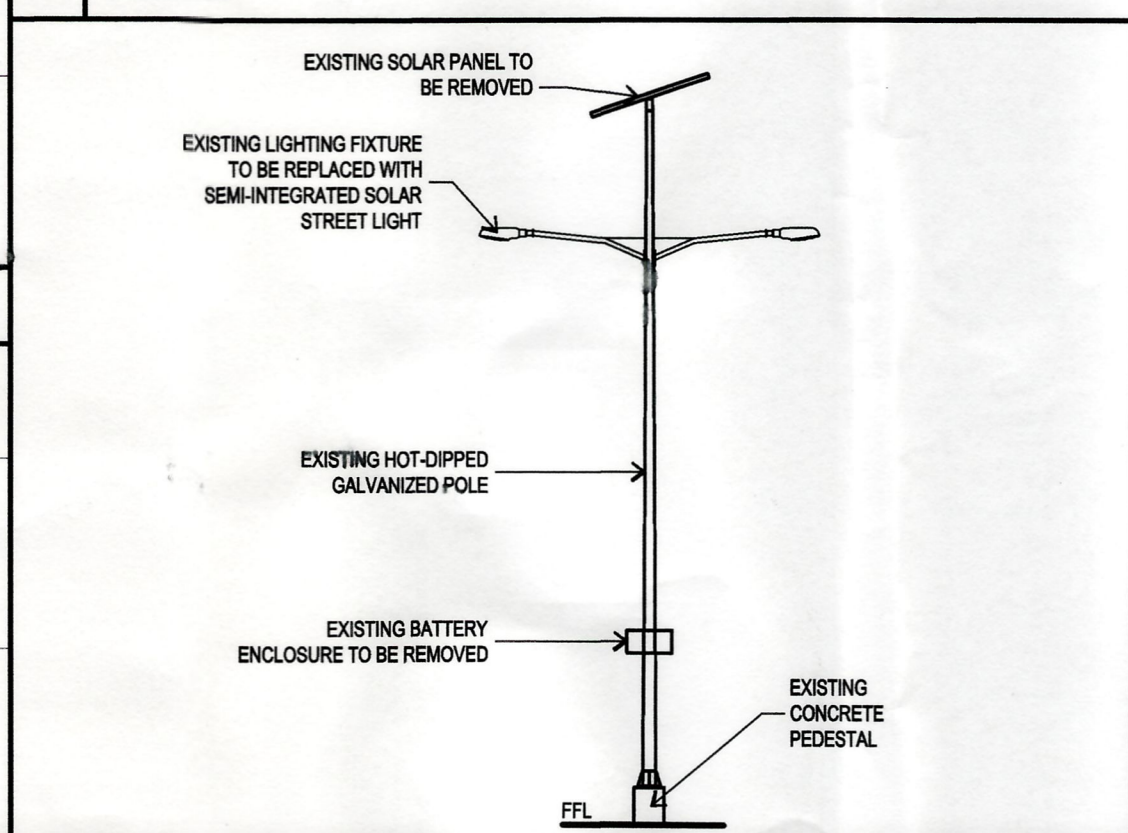
01.2 SHEET CONTENTS  
SCALE 1: NMMETERS

TYPE OF STREET LIGHT / DESIGNATED NUMBER FOR REPLACEMENT	NO. OF UNITS
EXISTING SINGLE ARM SOLAR STREET LIGHTS S3, S28, S31, & S32	4
EXISTING DOUBLE ARM SOLAR STREET LIGHTS / D13, D15, D19, & D26	4

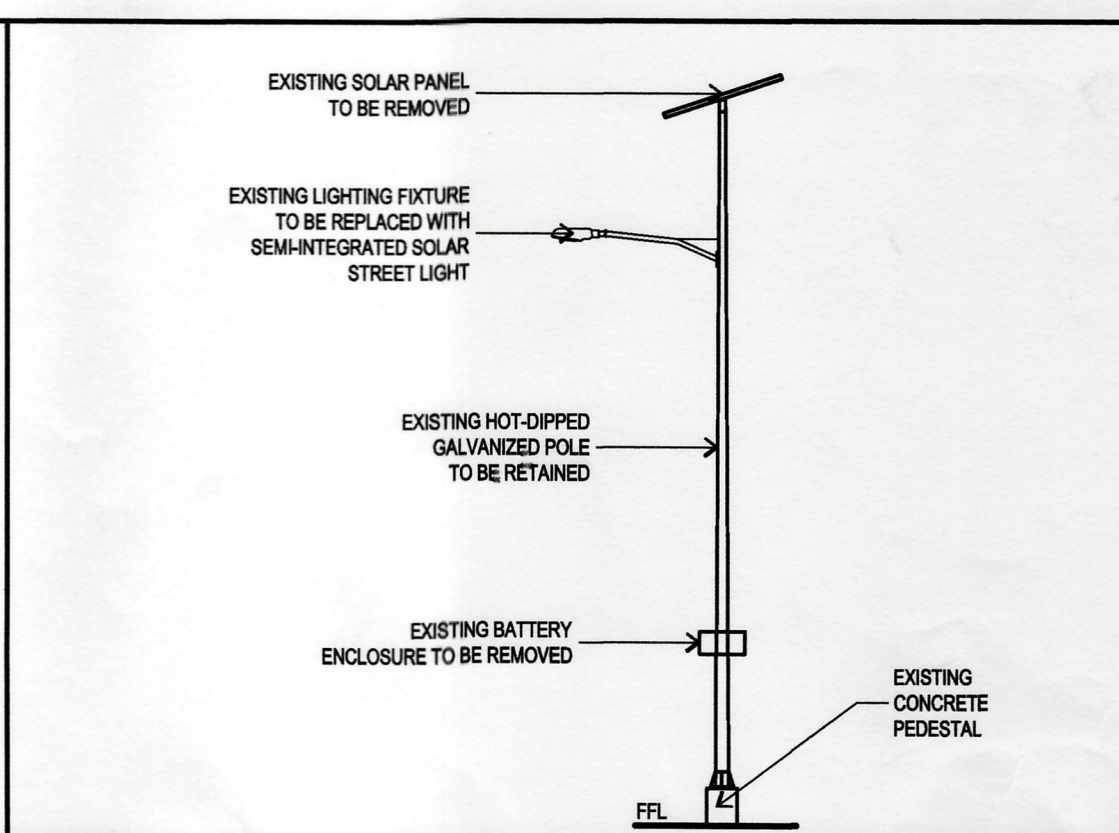
01.4 TABULATION  
SCALE 1: NMMETERS



01.3 LOCATION PLAN  
SCALE 1: 300METERS



01.5 EXISTING DOUBLE ARM STREET LIGHT-ELEVATION  
SCALE 1:100METERS



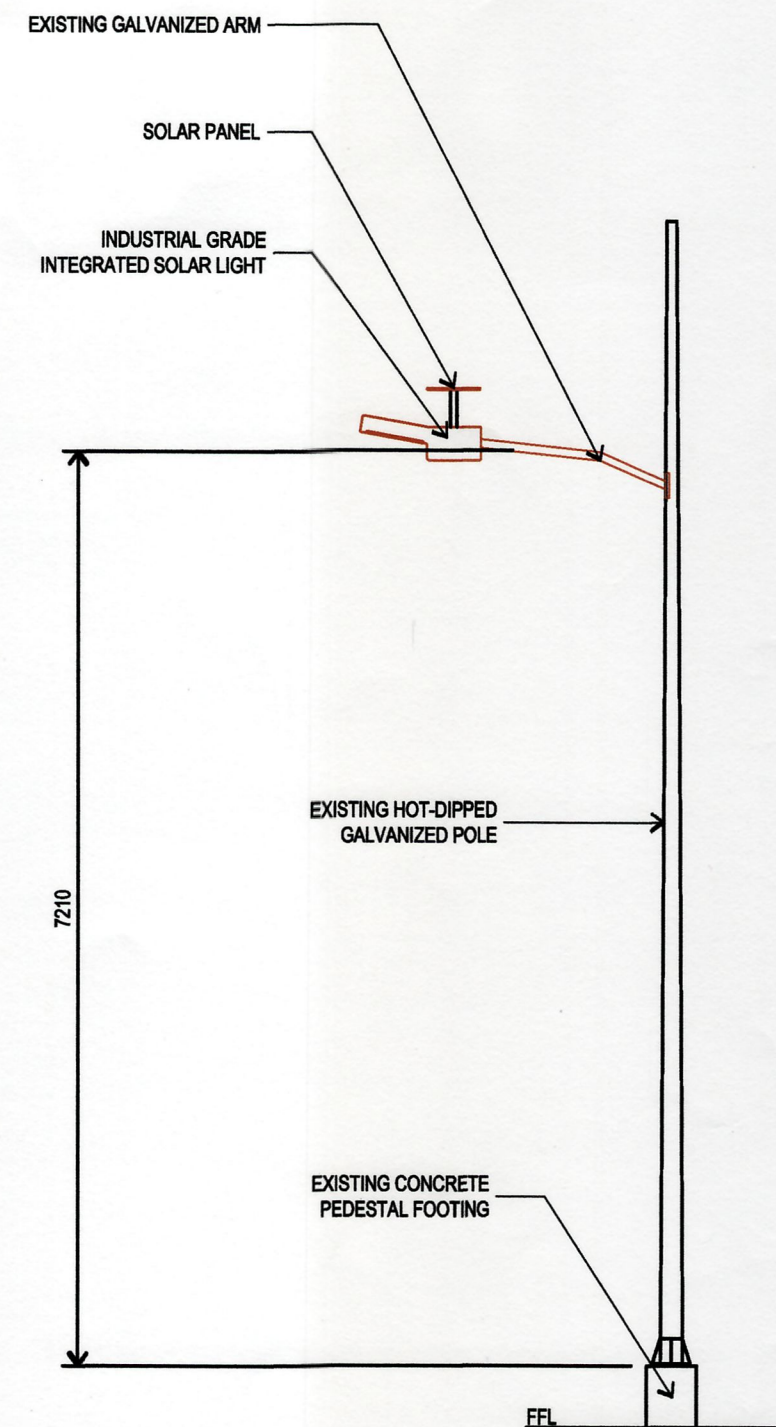
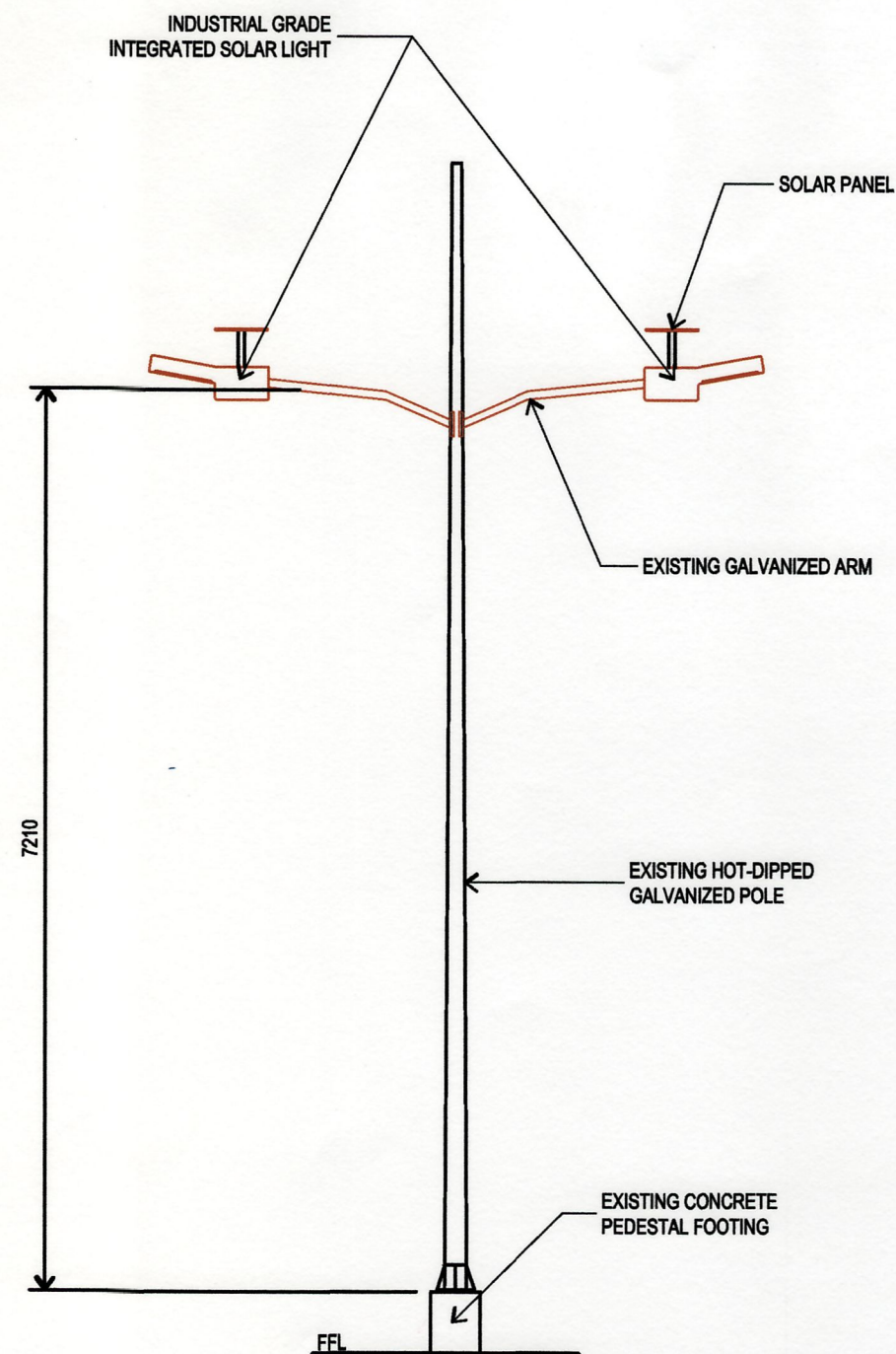
01.6 EXISTING SINGLE ARM STREET LIGHT-ELEVATION  
SCALE 1:100METERS

<p>PHILIPPINE PORTS AUTHORITY PMD DAVAO</p>	<p>PREPARED BY: EDEL PETER L. DE LA ROSA SENIOR ENGINEER A</p>	<p>CHECKED AND REVIEWED BY: LARA SIMONE L. ABA SUPERVISING ENGINEER A</p>	<p>RECOMMENDING APPROVAL BY: ASTERIO C. GALLARDO, JR. ESD MANAGER</p>	<p>APPROVED BY: ANALEE G. AGUILA PORT MANAGER</p>	<p>OWNER: ANALEE G. AGUILA PORT MANAGER</p>	<p>PROJECT TITLE: REMOVAL, SUPPLY AND INSTALLATION OF INDUSTRIAL GRADE INTEGRATED SOLAR STREET LIGHTS, SASA PORT, DAVAO CITY</p>	<p>LOCATION: KM. 10, SASA PORT AREA, SASA, DAVAO CITY</p>	<p>NO. OF SHEETS: 01 OF 02</p>	<p>DATE: 09/08/2020</p>	<p>DATE: 09/08/2020</p>	<p>DATE: 09/08/2020</p>
---	--	---	---	---	---	--	---	--------------------------------	-------------------------	-------------------------	-------------------------



## INDUSTRIAL GRADE INTEGRATED SOLAR LIGHT

- AUTO ADJUST OUTPUT POWER BASED ON WEATHER CONDITION FOR MPPT CONTROLLER;
- SOLAR PANEL 80W / 18V;
- LIFEPO BATTERY 24AH / 12.8V GRADE A;
- 12 HRS WORKING TIME PER NIGHT AND 3-5 HOURS BACK-UP ON RAINY DAYS;
- POST TOP AND SIDE ENTRY MOUNTING W/ CHARGING TEMPERATURE FROM -25 DEGREE CELSIUS - -65 DEGREE CELSIUS;
- 5000K COLOR TEMP. USING MICROWAVE SENSOR;
- HIGH LED LUMINOUS EFFICIENCY 150-210 LM / W;
- UP TO 10 METERS MOUNTING HEIGHT;
- TUV CERTIFIED EN55015;
- ROTATING PLATFORM UP TO 360 DEGREES; AND
- IP65



### 02.1 SPECIFICATIONS

SCALE 1: NMMETERS

### 02.2 DOUBLE SEMI-INTEGRATED SOLAR STREET LIGHT - ELEVATION

SCALE 1: NMMETERS

### 02.3 SINGLE SEMI-INTEGRATED SOLAR STREET LIGHT - ELEVATION

SCALE 1: NMMETERS



PREPARED BY:  
*[Signature]*  
EDEL PETER L. DE LA ROSA  
SENIOR ENGINEER A

CHECKED AND REVIEWED BY:  
*[Signature]*  
LARA SIMONE L. ABA  
SUPERVISING ENGINEER A

RECOMMENDING APPROVAL BY:  
*[Signature]*  
ASTERIO C. GALVARDO, JR.  
ESD MANAGER

APPROVED BY:  
*[Signature]*  
ANALEE G. AGUILA  
PORT MANAGER

OWNER:  
ANALEE G. AGUILA  
PORT MANAGER

SHEET CONTENTS:  
SPECIFICATIONS: DOUBLE  
SEMI-INTEGRATED SOLAR STREET LIGHT -  
ELEVATION & SINGLE SEMI-INTEGRATED  
SOLAR STREET LIGHT - ELEVATION

PROJECT TITLE:  
REMOVAL, SUPPLY AND INSTALLATION  
OF INDUSTRIAL GRADE INTEGRATED  
SOLAR STREET LIGHTS, SASA PORT,  
DAVAO CITY

LOCATION:  
KM. 10, SASA PORT AREA,  
SASA, DAVAO CITY

REVISIONS	
DATE	REMARKS

ADDENDUM

SHEET NO. **02** OF **2**

CADD BY: VAJ  
DATE DRAWN: 09/08/2020  
DATE UPDATED: 9/9/2020