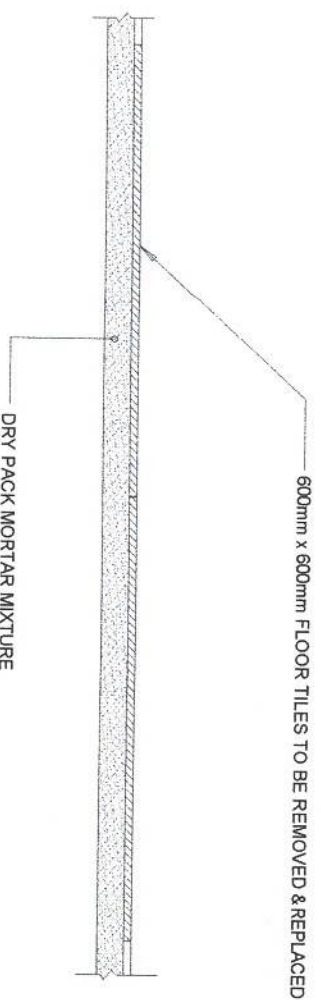
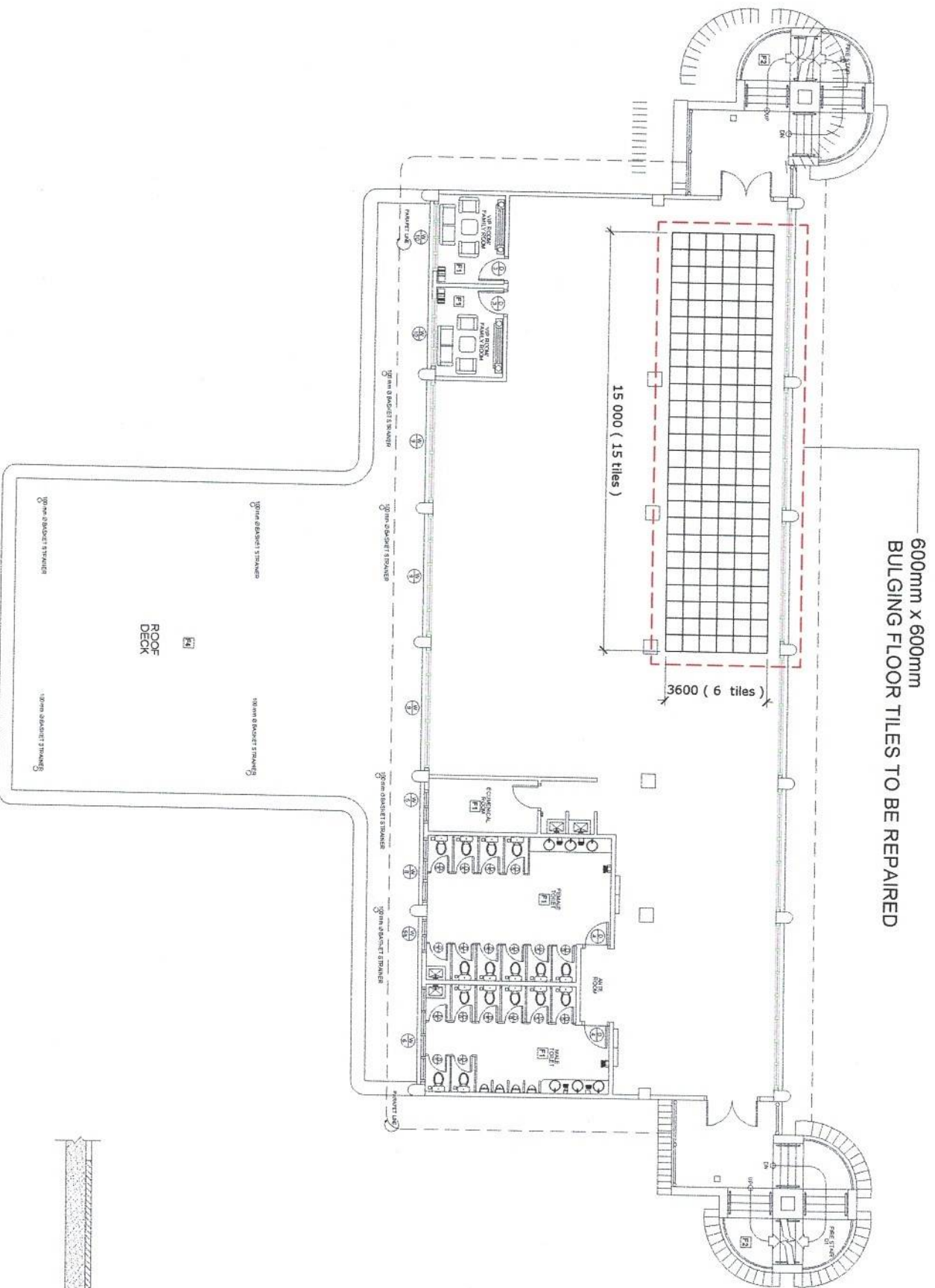


PHILIPPINE
PORTS
AUTHORITY
PMO- MINDORO



REPAIR OF FLOOR TILES AT PASSENGER TERMINAL BUILDING

PORT OF PUERTO GALERA, ORIENTAL MINDORO



SECTION DETAIL OF FLOOR TILES

PROJECT TITLE:

REPAIR OF FLOOR TILES AT PASSENGER TERMINAL BUILDING
PORT OF PUERTO GALERA, ORIENTAL MINDORO

PREPARED BY:

FERNANDO J. GALVEZO
Engineering Assistant A

SUBMITTED BY:

CONRADO E. CASAPAO JR.
Assistant Port Engineer

CHECKED / REVIEWED BY:

RONALD O. MATTAG
Acting Principal Engineer A

RECOMMENDING APPROVAL:

MARGARITO P. DIMALLIG
Acting Division Manager A, ESD

APPROVED:

ELVIS R. MEDALLA
Port Manager A

SHEET CONTENTS:

AS SHOWN

SCALE:

AS SHOWN

SHEET NO.

1 of 1

DATE:

25 AUG 2020

