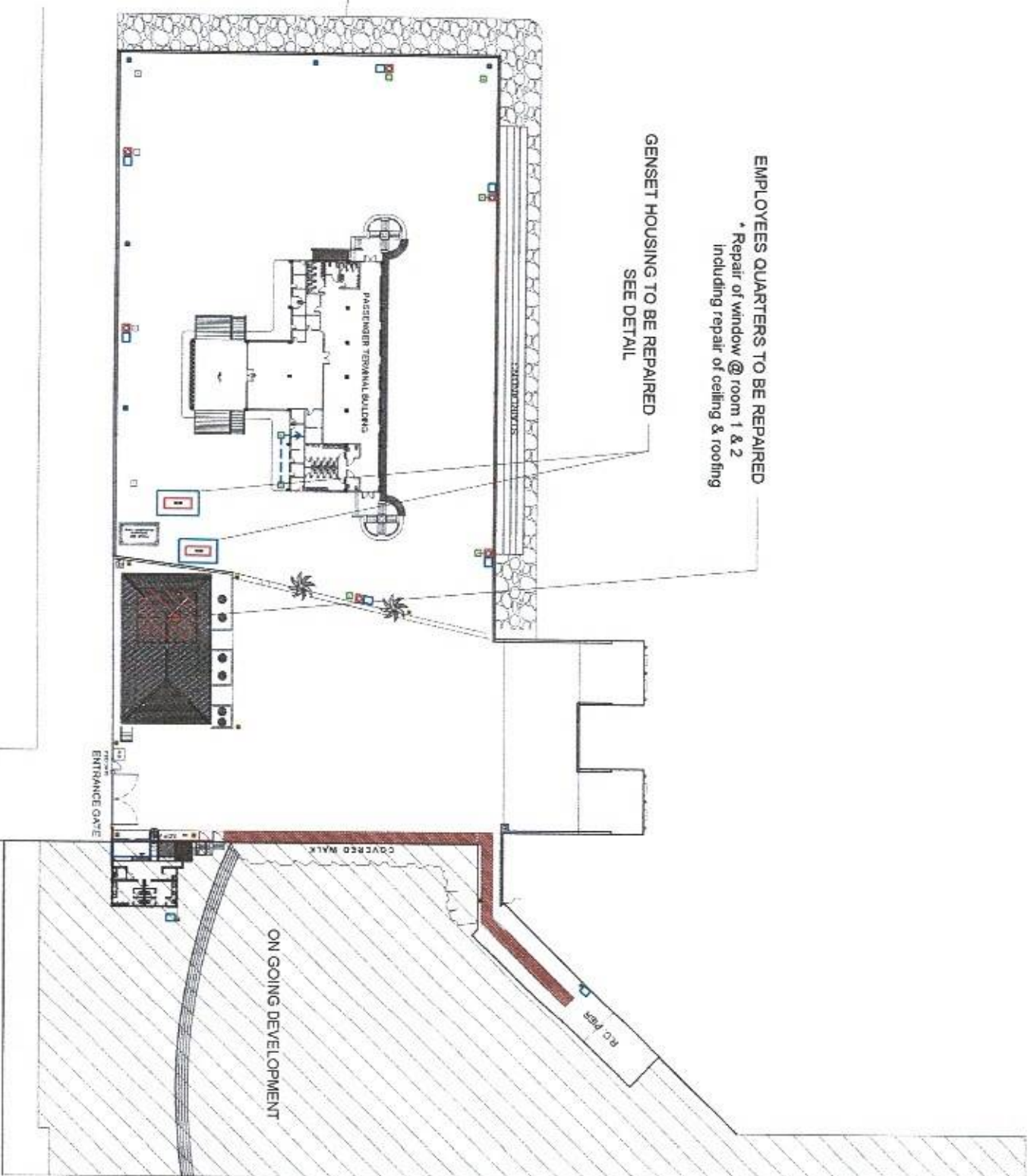





PMO- MINDORO

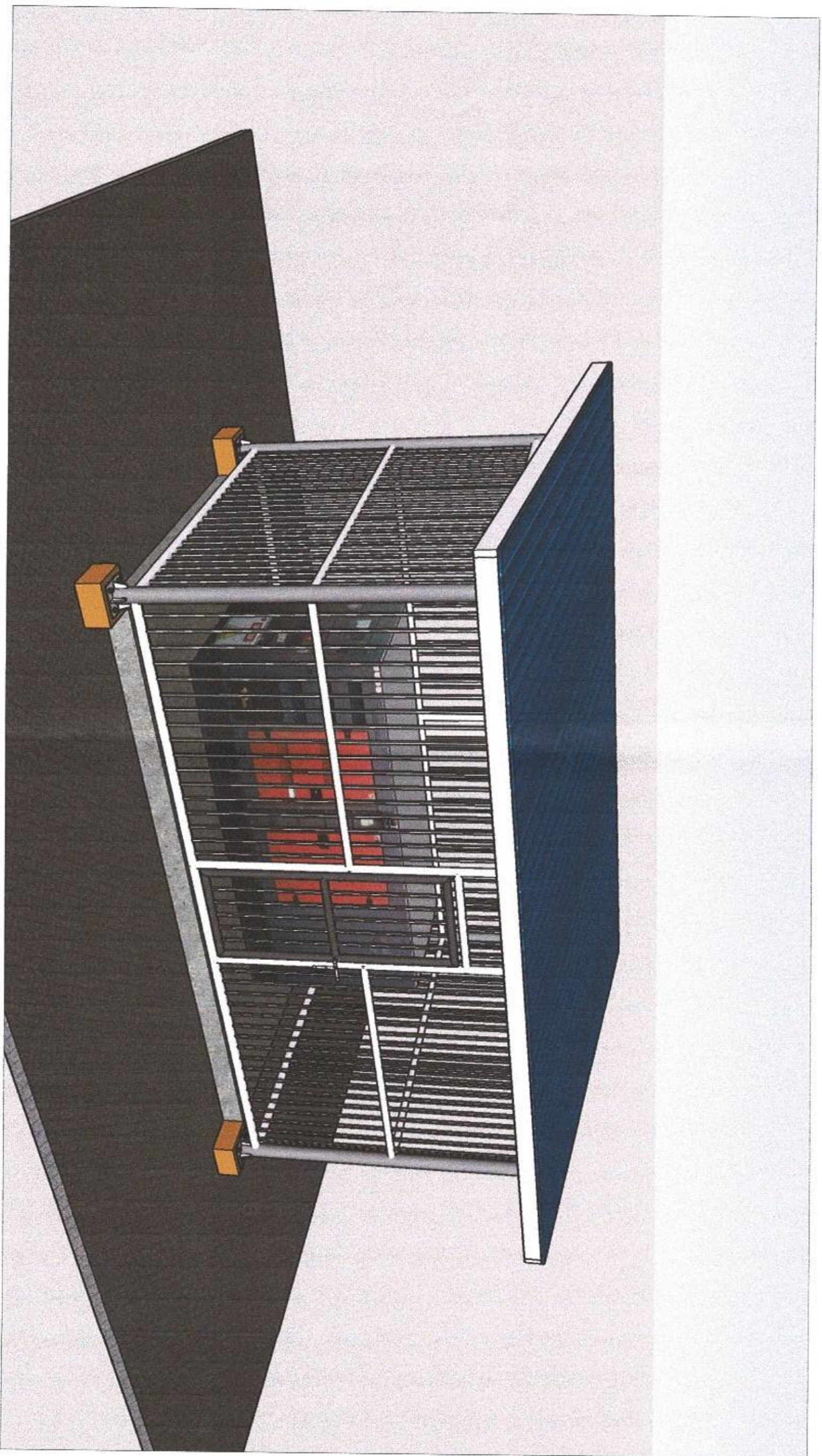
REPAIR OF GENSET HOUSING AND EMPLOYEES QUARTERS

PORT OF PUERTO, ORIENTAL MINDORO



PORT LAYOUT PLAN
PORT OF PUERTO GALERA

 <p>PHILIPPINE PORTS AUTHORITY PMO - MINDORO</p>		PROJECT TITLE: REPAIR OF GENSET HOUSING AND EMPLOYEES QUARTERS PORT OF CALAPAN, ORIENTAL MINDORO		SHEET CONTENTS: AS SHOWN		SCALE: AS SHOWN	
PREPARED BY: FERNANDO J. GALVEZO Engineering Assistant A		SUBMITTED BY: ALVIN JAY A. SERGIO Office Engineer		CHECKED / REVIEWED BY: RONALDO O. MANTAGAS Acting Principal Engineer A		RECOMMENDING APPROVAL: MARGARITO P. DIMAILIG Acting Division Manager A, ESD	
APPROVED: LEO A. ROMERO Acting Port Manager A				DATE: 14 JUNE 2022			



PERSPECTIVE

TYPICAL DESIGN OF HOUSING FOR 150kva & 300 kva GENSET

<p>PROJECT TITLE: REPAIR OF GENSET HOUSING AND EMPLOYEES QUARTERS PORT OF PUERTO GALERA, ORIENTAL MINDORO</p>		<p>SHEET CONTENTS: AS SHOWN</p>		<p>SCALE: AS SHOWN</p>	
<p>PREPARED BY: FERNANDO J. GALVEZO Engineering Assistant A</p>	<p>SUBMITTED BY: ALVIN JAY A. SERGIO Office Engineer</p>	<p>CHECKED / REVIEWED BY: RONALD O. MABAG Acting Principal Engineer A</p>	<p>RECOMMENDING APPROVAL: MARGARITO F. DIMAILIG Acting Division Manager A, ESD</p>	<p>APPROVED: LEO A. ROMERO Acting Port Manager A</p>	<p>SHEET NO. 2 of 11</p>
<p>DATE: 14 JUNE 2022</p>					



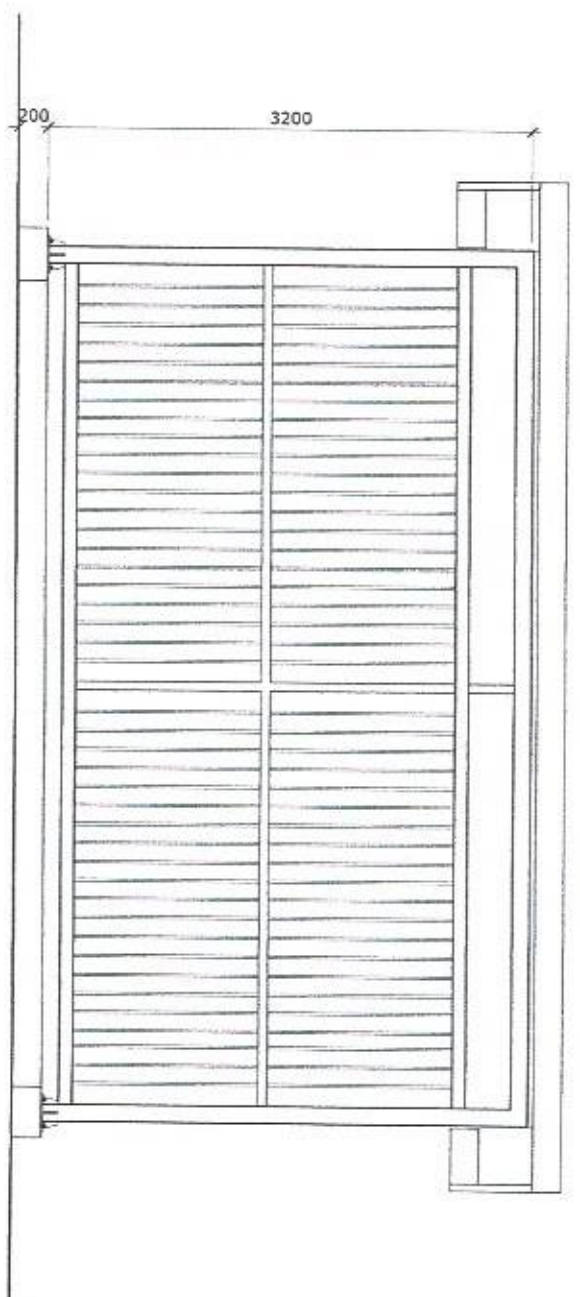


Genset Housing - 1
FLOOR PLAN

SCALE 1:50 M.

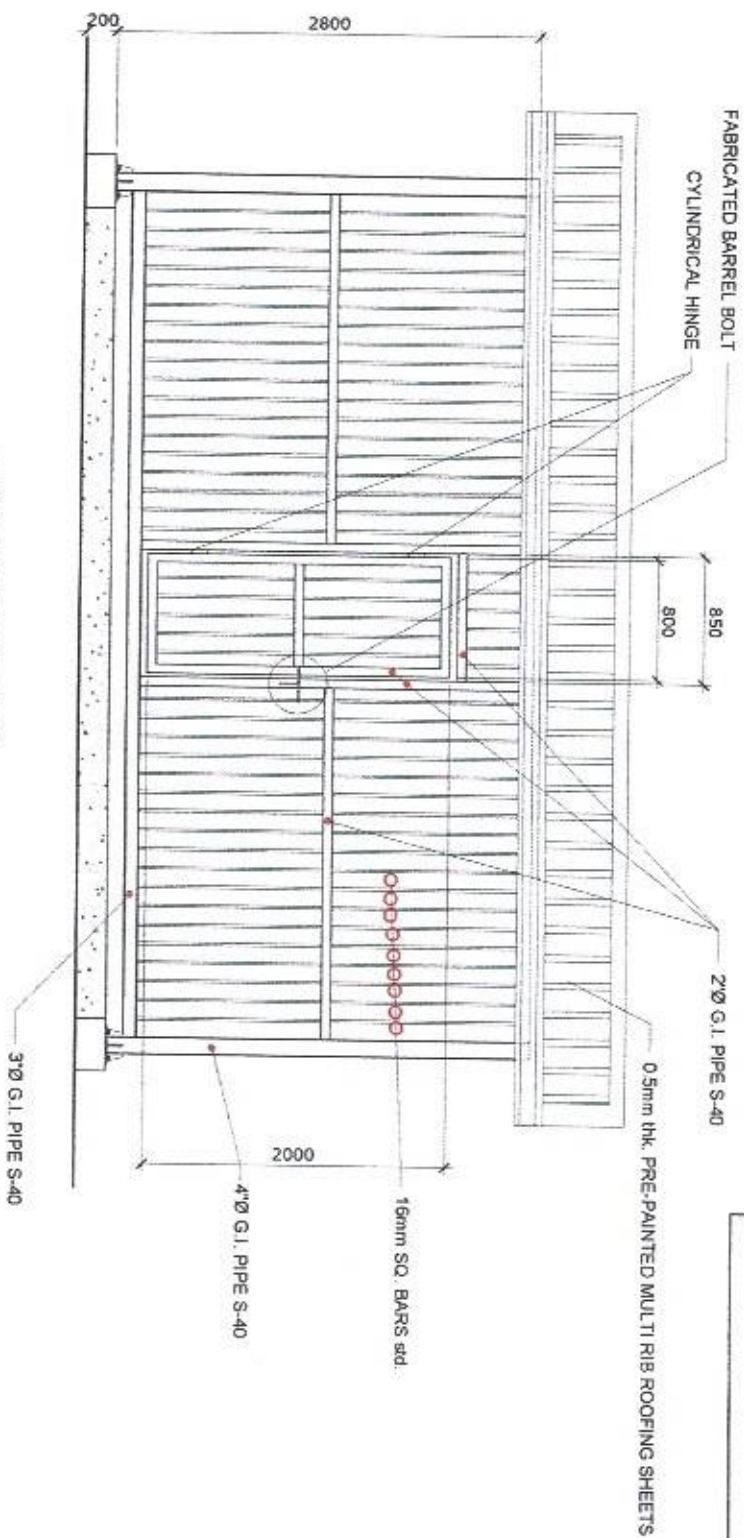
NOTES

- For painting of G.I. Pipes & sq. bars & tubulars
1. Use epoxy primer for 1st coating
2. Epoxy enamel (Automotive paint) for final coating



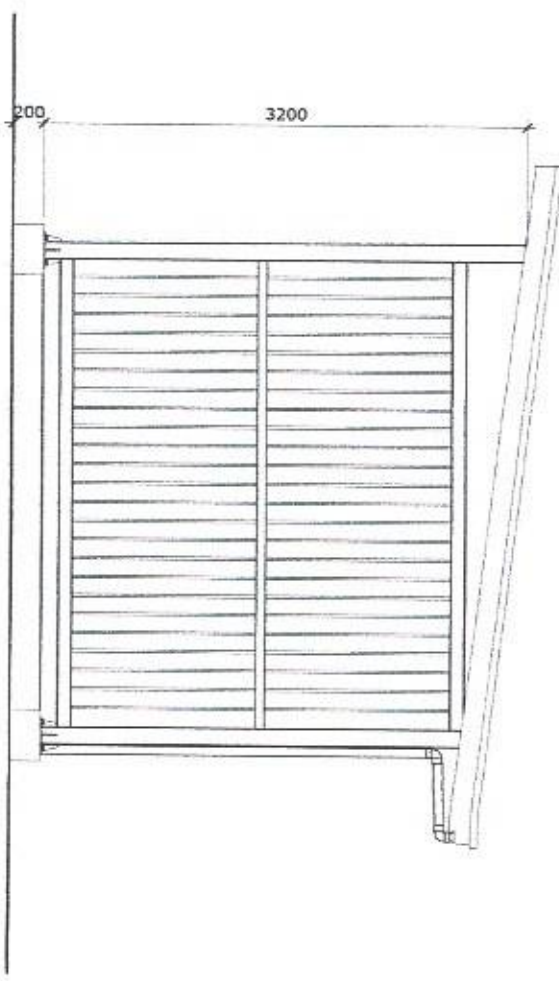
REAR ELEVATION

SCALE 1:50 M.



FRONT ELEVATION

SCALE 1:50 M.



TYPICAL SIDE ELEVATION

SCALE 1:50 M.

DETAIL OF HOUSING FOR 150 KVA GENSET

PROJECT TITLE:

REPAIR OF GENSET HOUSING AND EMPLOYEES QUARTERS
PORT OF PUERTO GALERA, ORIENTAL MINDORO

PREPARED BY:

FERNANDO J. GALVEZO
Engineering Assistant A

SUBMITTED BY:

ALVIN JAY A. SERGIO
Office Engineer

CHECKED / REVIEWED BY:

RONALD O. MATBAG
Acting Principal Engineer A

RECOMMENDING APPROVAL:

MARGARITO P. DIMALLIG
Acting Division Manager A, ESD

APPROVED:

LEO A. ROMERO
Acting Port Manager A

SHEET CONTENTS:

AS SHOWN

SCALE:

AS SHOWN

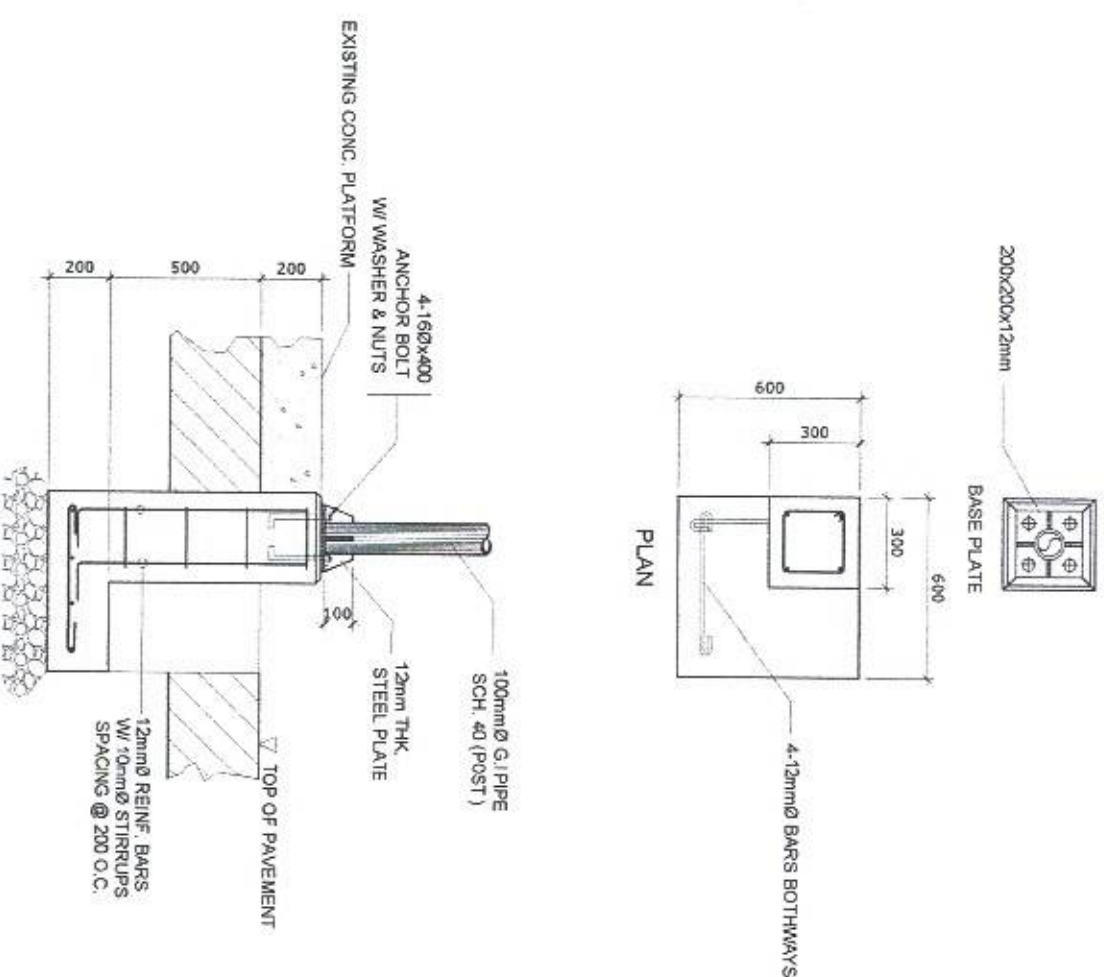
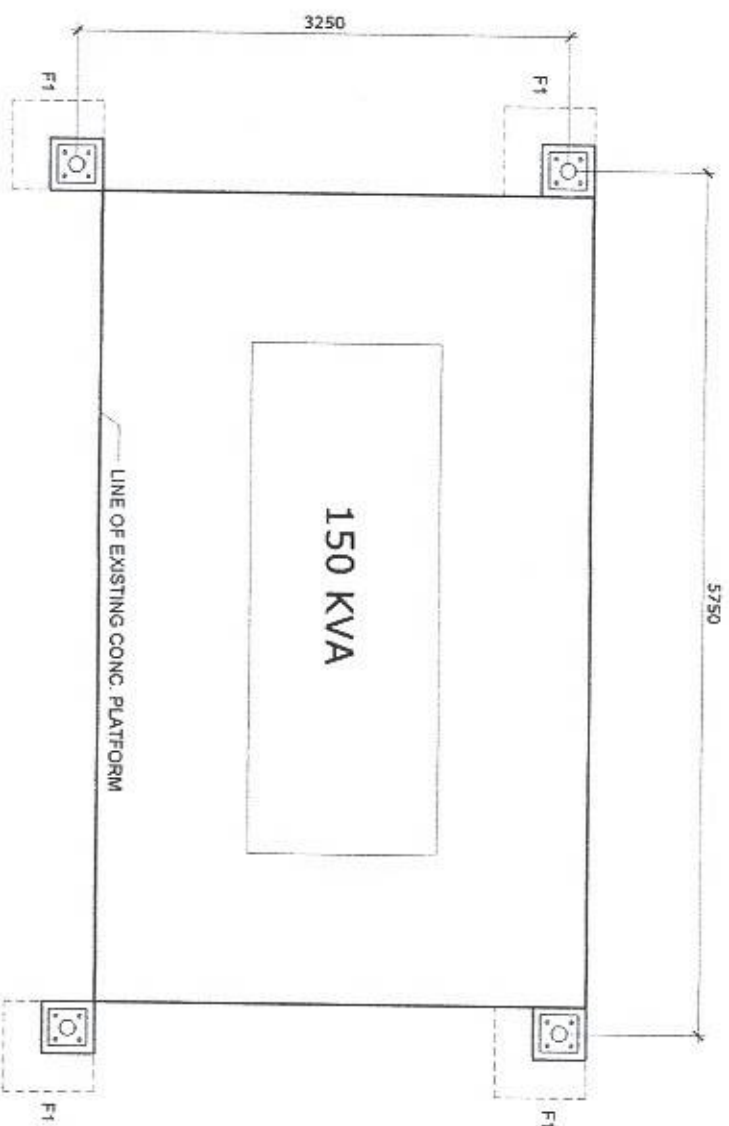
SHEET NO.

3 of 11

DATE:

14 JUNE 2022





Genset Housing - 1

FOUNDATION PLAN

SCALE 1:50 M

TYPICAL DETAIL OF FOOTING (F1)

SCALE 1:25 MTS

PROJECT TITLE:

REPAIR OF GENSET HOUSING AND EMPLOYEES QUARTERS
PORT OF PUERTO GALERA, ORIENTAL MINDORO

SHEET CONTENTS:

SCALE:
AS SHOWN

PREPARED BY:

FERNANDO J. GALVEZO
Engineering Assistant A

SUBMITTED BY:

ALVIN JAY A. SERGIO
Office Engineer

CHECKED / REVIEWED BY:

RONALD O. MATIBAG
Acting Principal Engineer A

RECOMMENDING APPROVAL:

MARGARITO P. DIMAALIG
Acting Division Manager A, ESD

APPROVED:

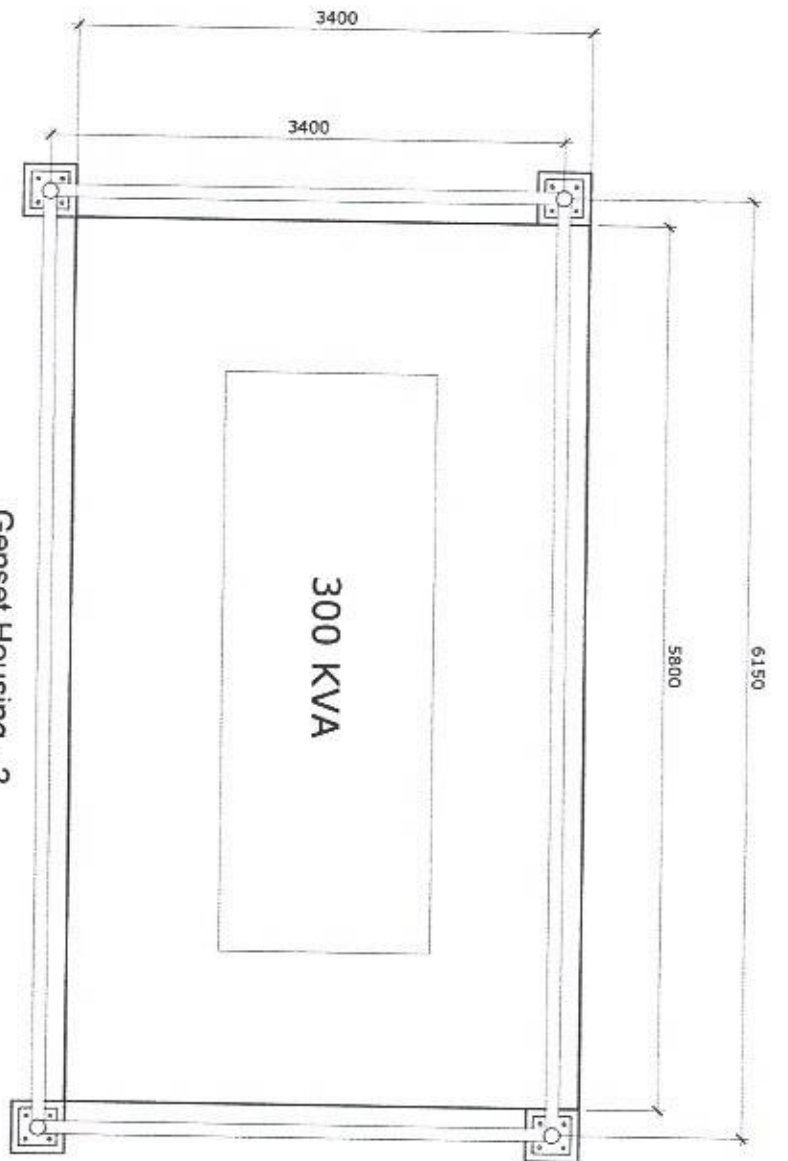
LEO A. ROMERO
Acting Port Manager A

AS SHOWN

SHEET NO.
4 of 11

DATE:
14 JUNE 2022

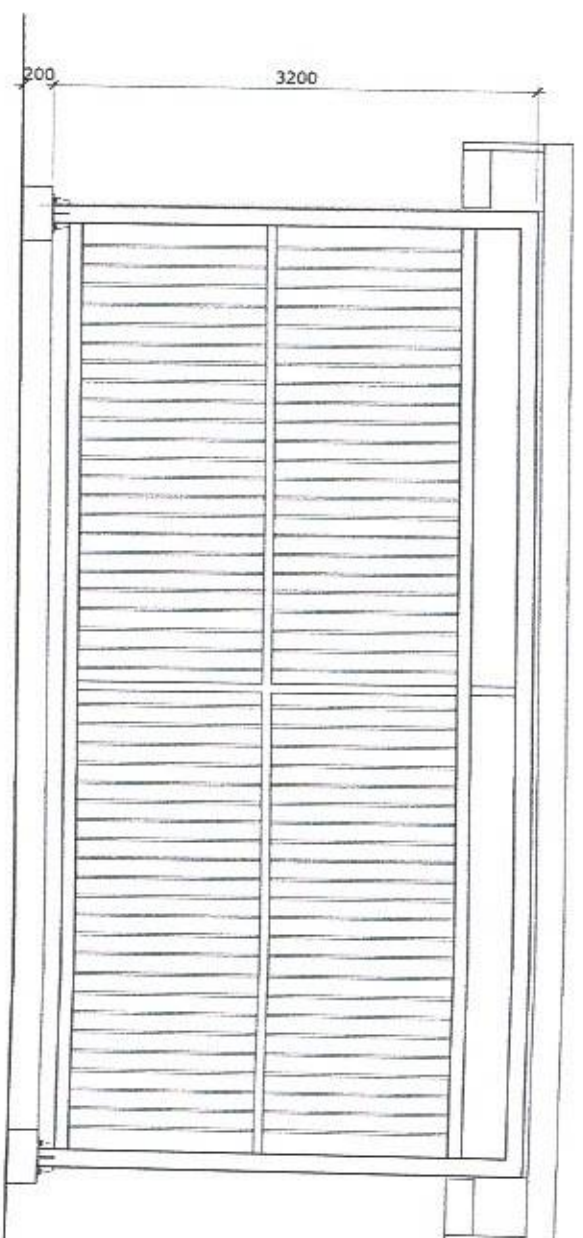




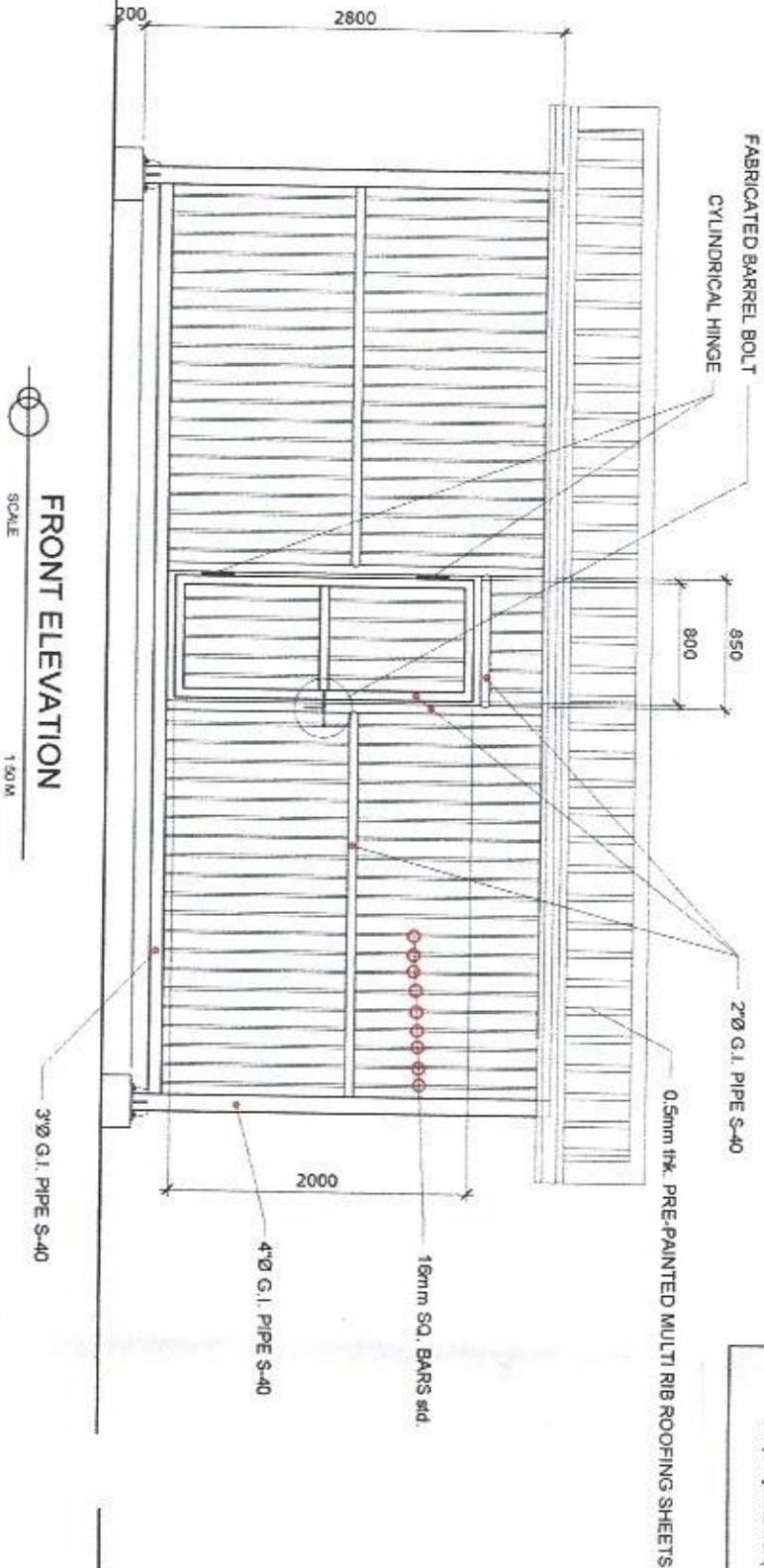
Genset Housing - 2
FLOOR PLAN
SCALE 1:50 M

NOTES:

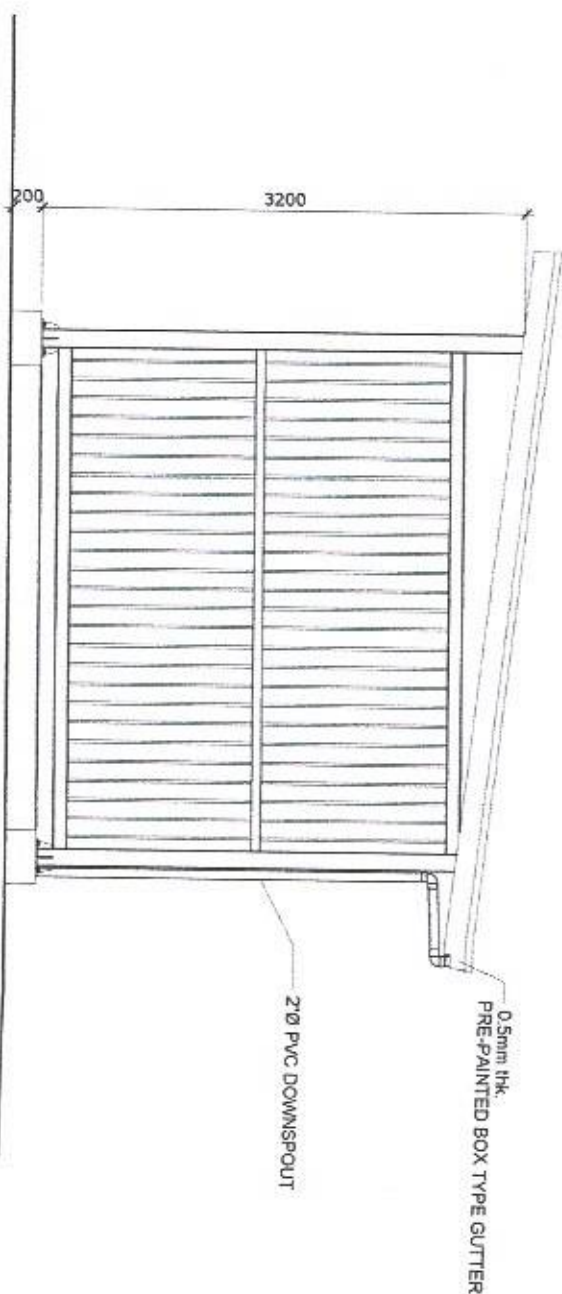
- For painting of G.I. Pipes & sq. bars & tubulars
1. Use epoxy primer for 1st coating
2. Epoxy enamel (Automotive paint) for final coating



REAR ELEVATION
SCALE 1:50 M



FRONT ELEVATION
SCALE 1:50 M



TYPICAL SIDE ELEVATION
SCALE 1:50 M

DETAIL OF HOUSING FOR 350 KVA GENSET

PROJECT TITLE:

REPAIR OF GENSET HOUSING AND EMPLOYEES QUARTERS
PORT OF PUERTO GALERA, ORIENTAL MINDORO

PREPARED BY:

FERNANDO J. GALVEZO
Engineering Assistant A

SUBMITTED BY:

ALVIN JAY A. SEBIO
Office Engineer

CHECKED / REVIEWED BY:

RONALD O. MATIBAG
Acting Principal Engineer A

RECOMMENDING APPROVAL:

MARGARITO P. DIMAILIG
Acting Division Manager A, ESD

APPROVED:

LEO A. ROMERO
Acting Port Manager A

SHEET CONTENTS:

AS SHOWN

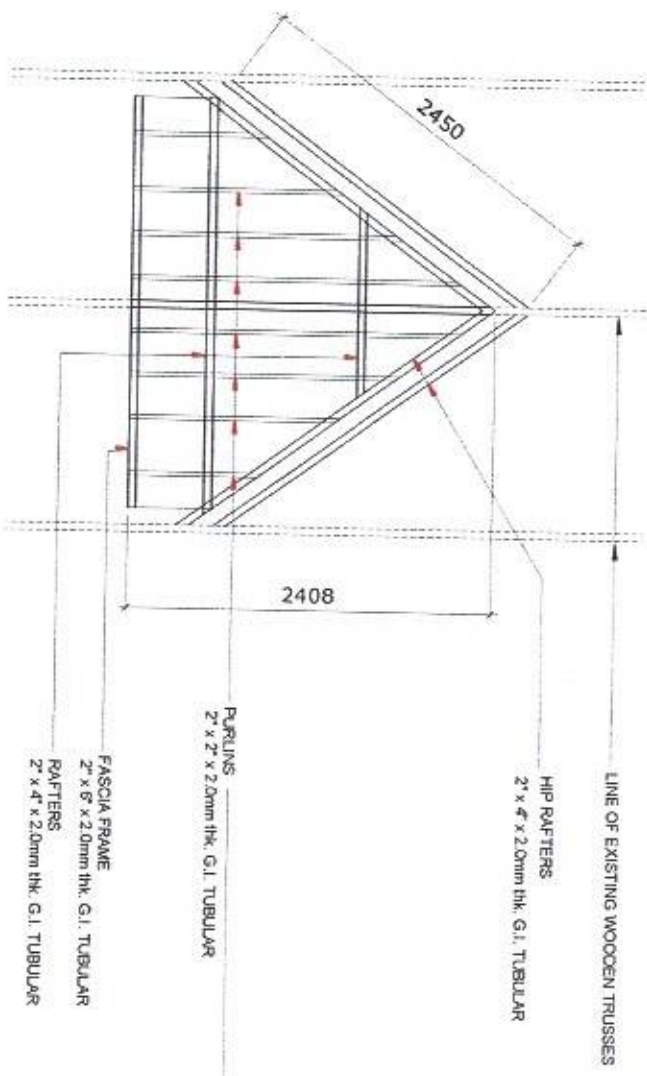
SCALE:

AS SHOWN

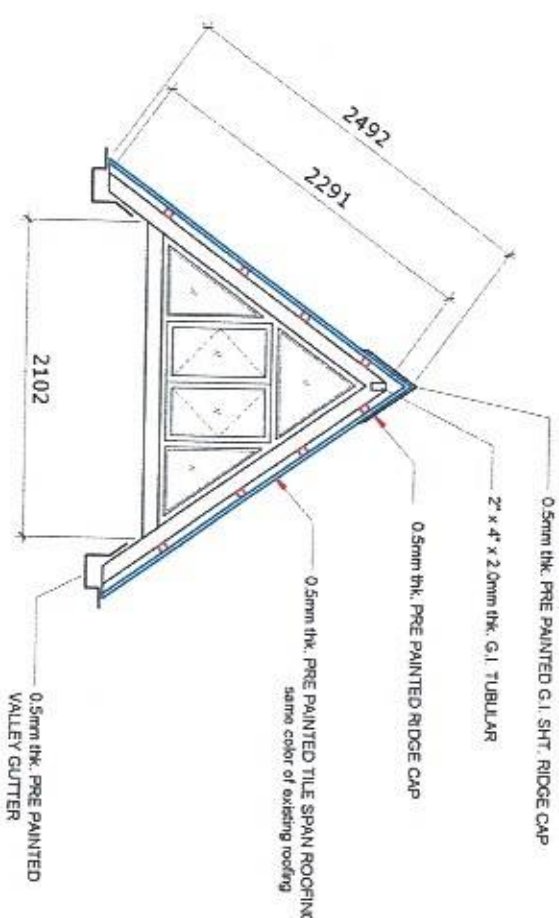
SHEET NO.
6 of 11

DATE:
14 JUNE 2022

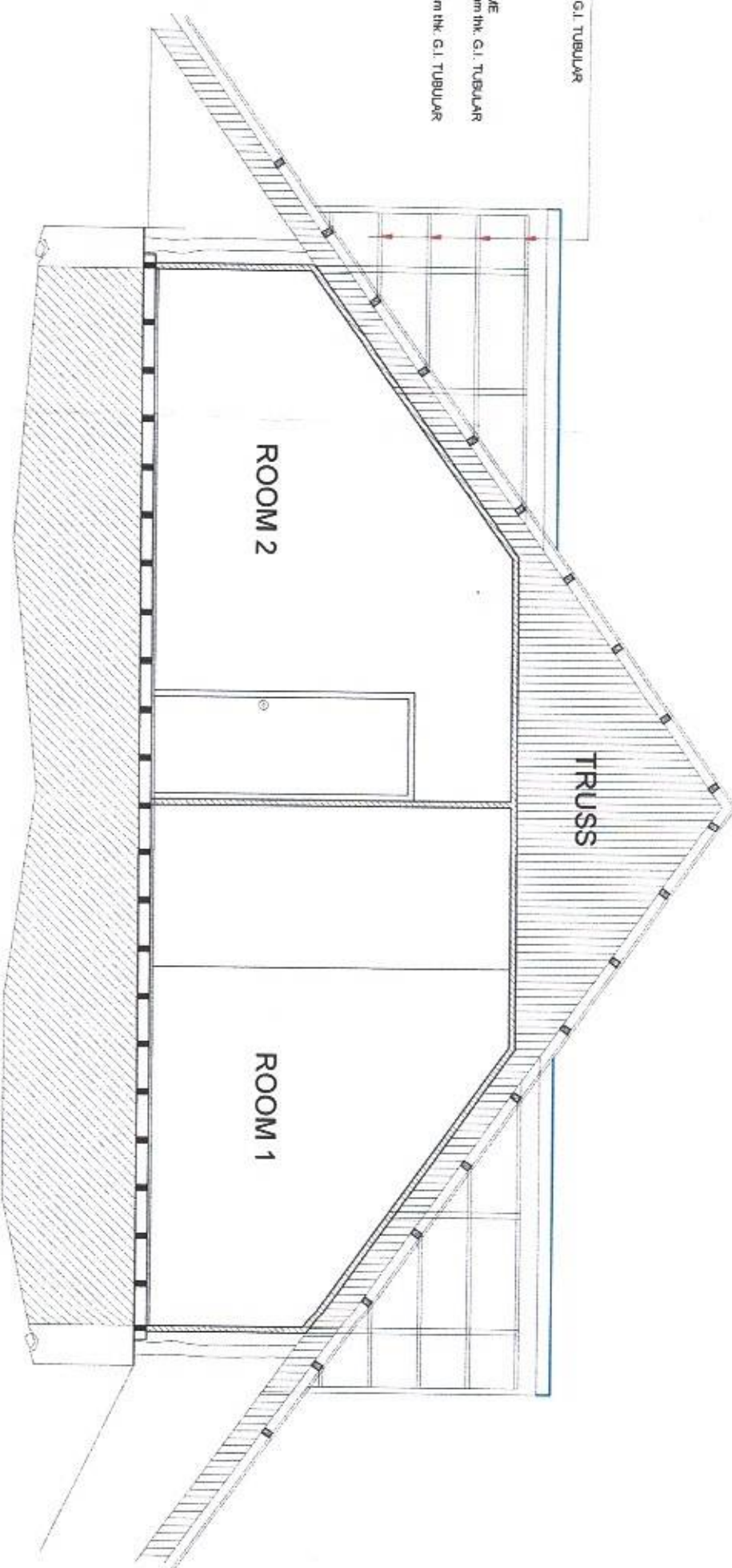




ROOF FRAMING PLAN



FRONT



SECTION

PROJECT TITLE: REPAIR OF GENSET HOUSING AND EMPLOYEES QUARTERS
PORT OF PUERTO GALERA, ORIENTAL MINDORO

PREPARED BY:
FERNANDO J. GALVEZO
Engineering Assistant A

SUBMITTED BY:
ALVIN JAY A. SERGIO
Office Engineer

CHECKED / REVIEWED BY:
RONALD O. MATIBAG
Acting Principal Engineer A

RECOMMENDING APPROVAL:
MARGARITO P. DIMAALING
Acting Division Manager A, ESD

APPROVED:
LEO A. ROMERO
Acting Port Manager A

SHEET CONTENTS: AS SHOWN

SCALE: AS SHOWN
SHEET NO. 11 of 11
DATE: 14 JUNE 2022

