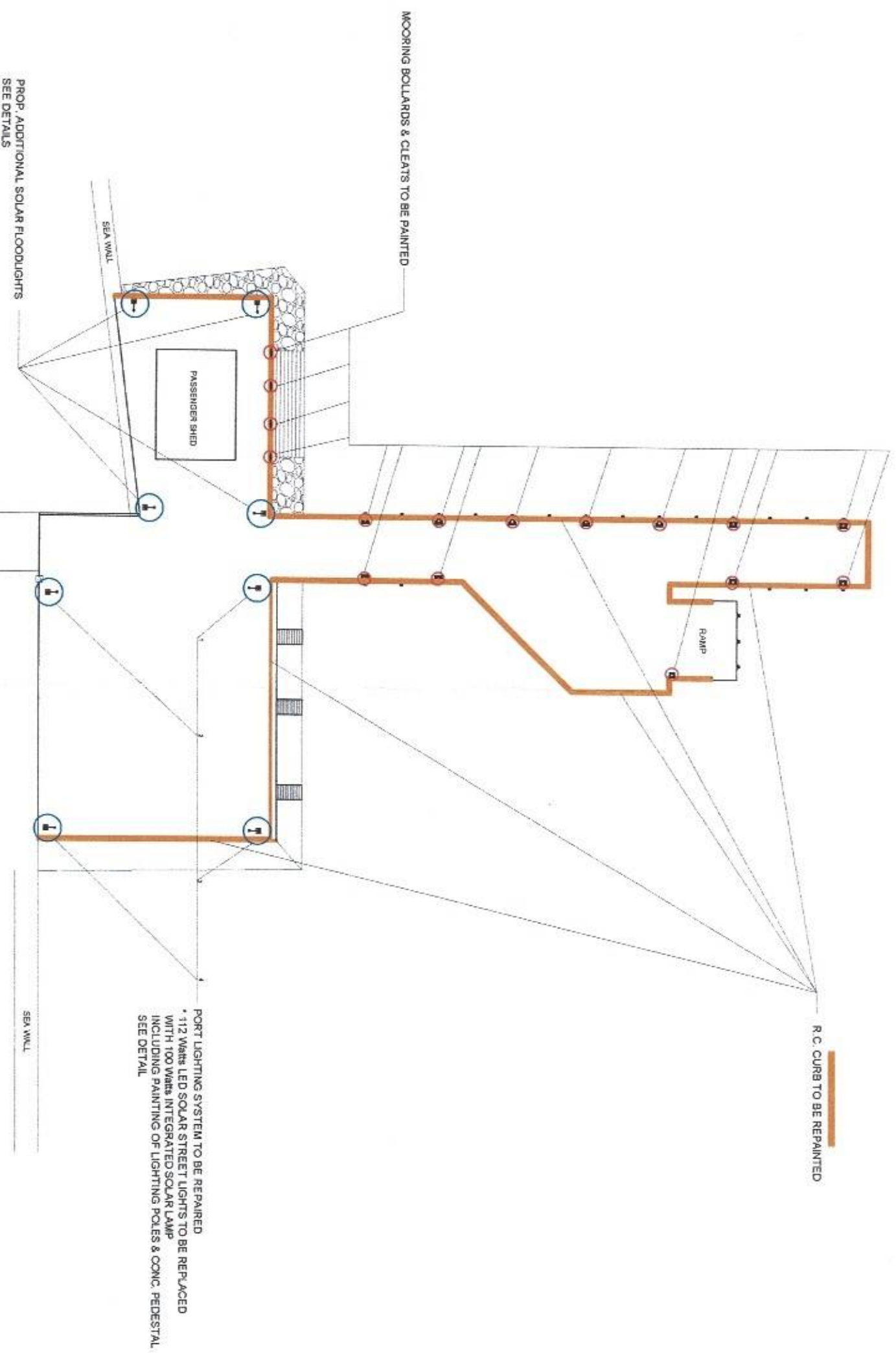




REPAIR OF PORT LIGHTING SYSTEM  
AND PAINTING WORKS  
PORT OF BANSUD, ORIENTAL MINDORO



PORT OF BANSUD  
ORIENTAL MINDORO

PROJECT TITLE: REPAIR OF PORT LIGHTING SYSTEM AND PAINTING WORKS  
PORT OF BANSUD, ORIENTAL MINDORO

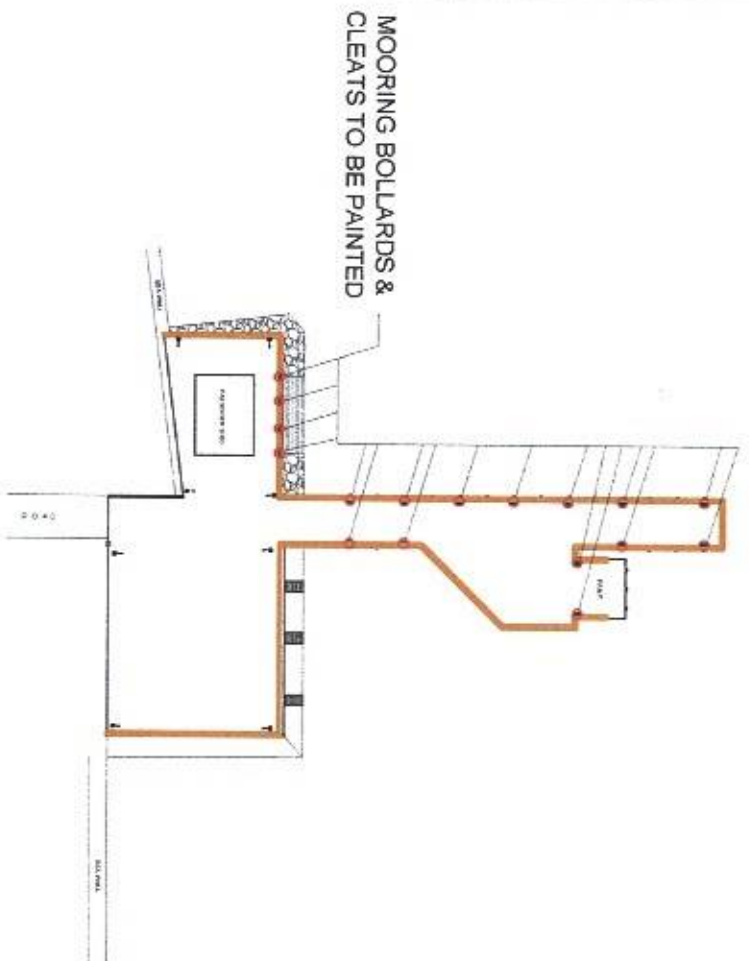
PREPARED BY:  FERNANDO J. GALVEZO Engineering Assistant A	SUBMITTED BY:  JESSIE J. MERILLO Engineer B	CHECKED / REVIEWED BY:  RONALD O. MATIBAG Acting Principal Engineer A	RECOMMENDING APPROVAL:  MARGARITO R. DIMALIG Acting Division Manager A, ESD	APPROVED:  LEO A. ROMERO Acting Port Manager A	SHEET CONTENTS: AS SHOWN	SCALE: AS SHOWN
					SHEET NO. 1 of 5	
					DATE: 17 MAY 2022	











LOCATION PLAN

MOORING BOLLARDS & CLEATS TO BE PAINTED



- NOTES:
1. Clean all surfaces, apply rust converter on all corroded areas
  2. Use epoxy primer for first coating
  3. Use epoxy enamel / automotive paint for first coating



PROJECT TITLE:

REPAIR OF PORT LIGHTING SYSTEM AND PAINTING WORKS  
PORT OF BANSUD, ORIENTAL MINDORO

SHEET CONTENTS:

AS SHOWN

SCALE:

AS SHOWN

SHEET NO.

3 of 5

DATE:

17 MAY 2022

PREPARED BY:

FERNANDO J. GALVEZO

Engineering Assistant A

SUBMITTED BY:

JESSIE J. MERILLO

Engineer B

CHECKED / REVIEWED BY:

RONALD O. MONTAG

Acting Principal Engineer A

RECOMMENDING APPROVAL:

MARGARITO P. DIMALLIG

Acting Division Manager A, ESD

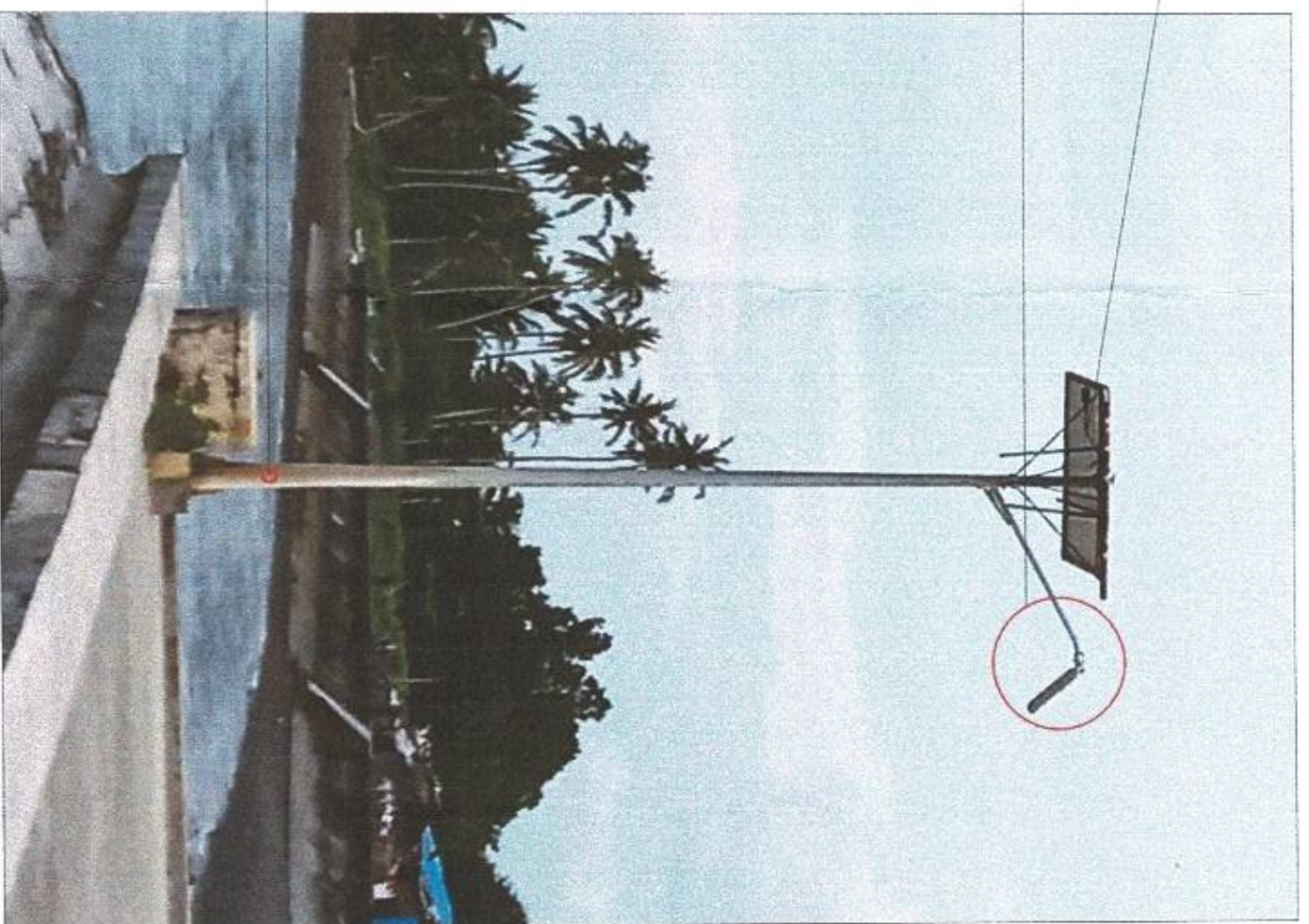
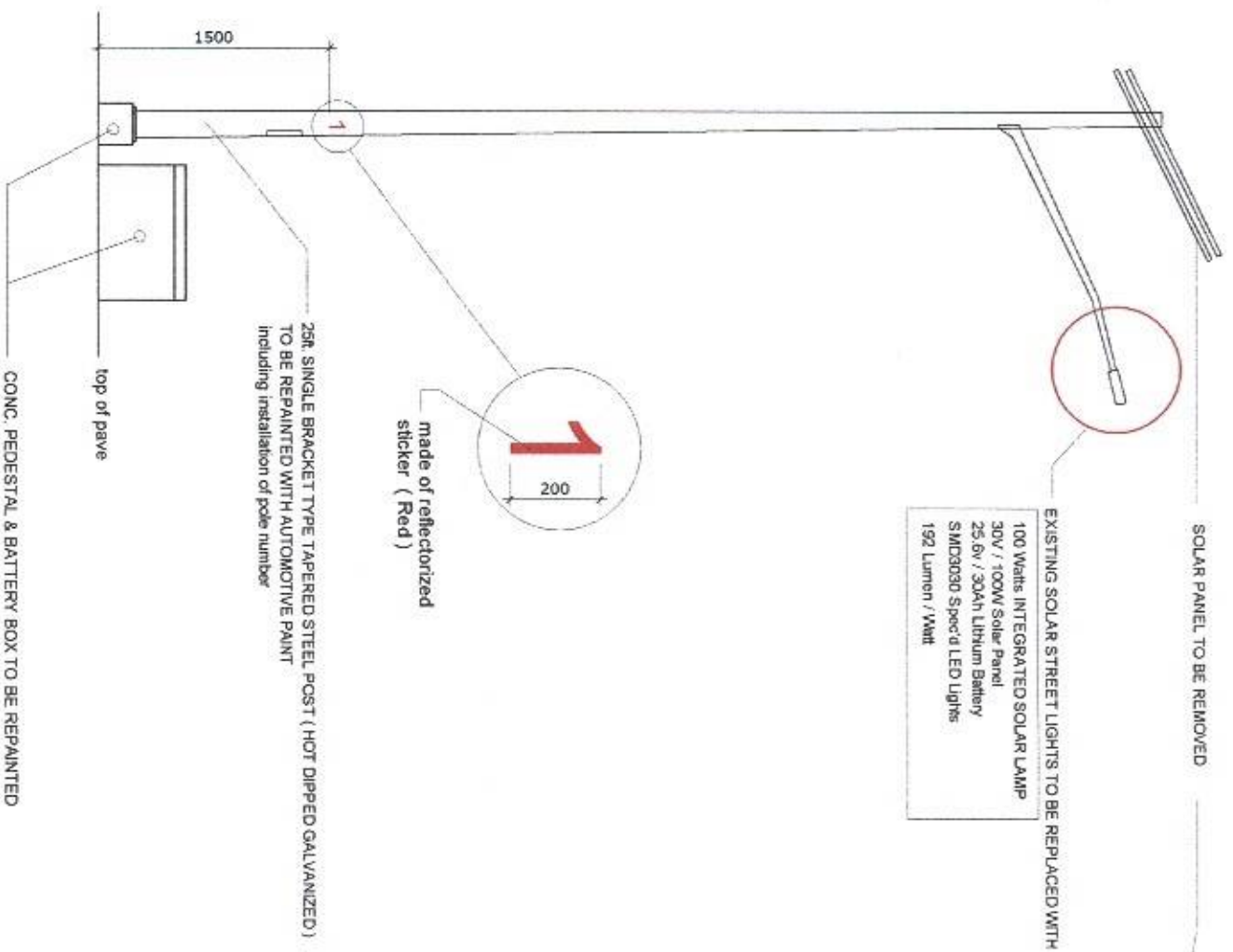
APPROVED:

LEO A. ROMERO

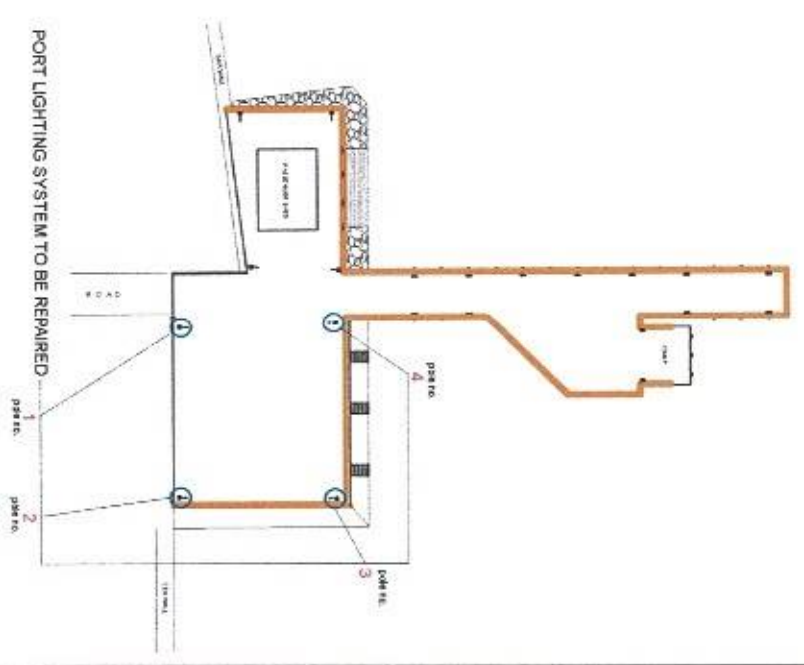
Acting Port Manager A








- NOTES:
1. Clean all surfaces, apply rust converter on all corroded areas
  2. Use epoxy primer for first coating
  3. Use epoxy enamel / automotive paint for final coating



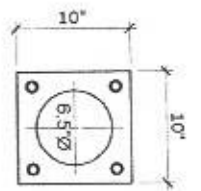
LOCATION PLAN

DETAIL OF SINGLE ARM STEEL POLE TO BE REPAINTED

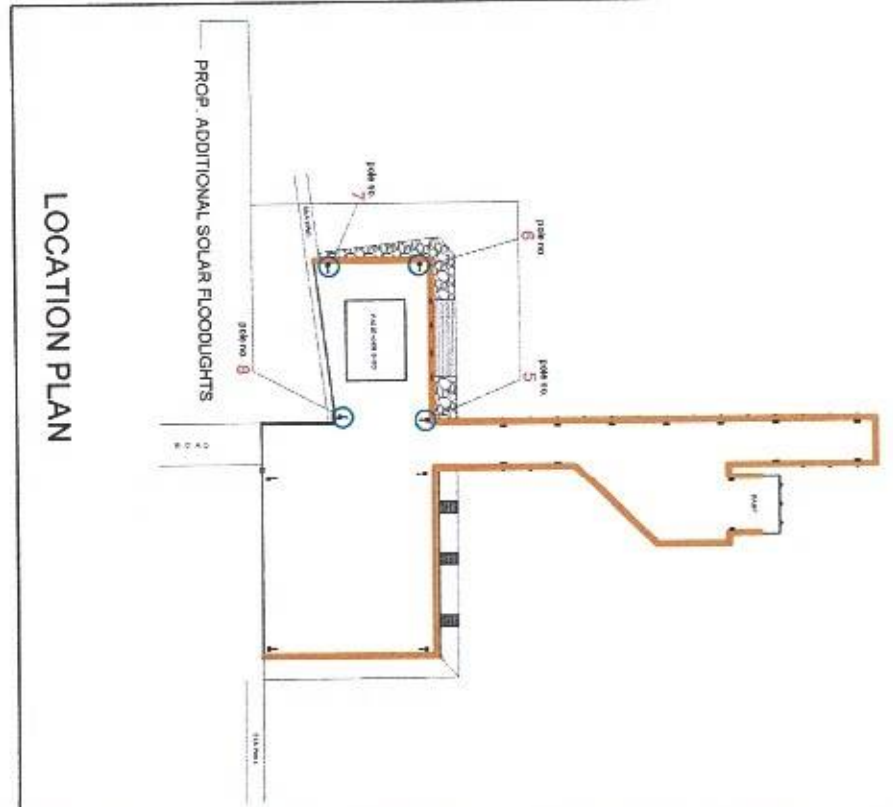
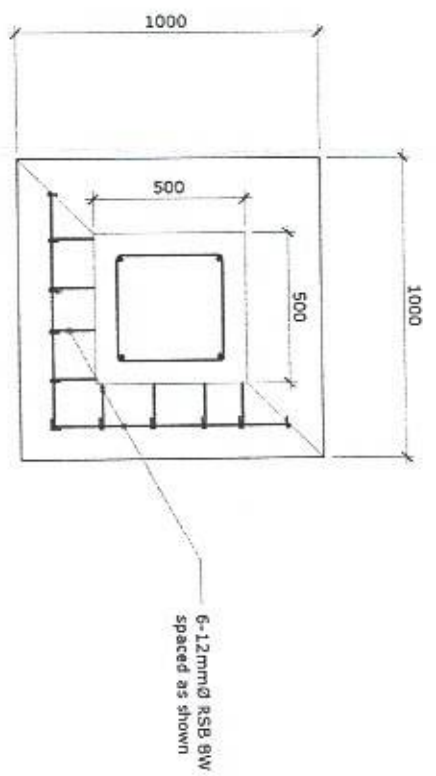
 <p>PHILIPPINE PORTS AUTHORITY PMO-MINDORO</p>		<p><b>PROJECT TITLE:</b> REPAIR OF PORT LIGHTING SYSTEM AND PAINTING WORKS PORT OF BANSUD, ORIENTAL MINDORO</p>				<p><b>SHEET CONTENTS:</b> AS SHOWN</p>		<p><b>SCALE:</b> AS SHOWN</p>	
<p><b>PREPARED BY:</b> FERNANDO J. GALVEZO Engineering Assistant A</p>		<p><b>SUBMITTED BY:</b> JESSIE J. MERILLO Engineer B</p>		<p><b>CHECKED / REVIEWED BY:</b> RONALDO O. MAYBAG Acting Principal Engineer A</p>		<p><b>RECOMMENDING APPROVAL:</b> MARGARITO P. DIMALIG Acting Division Manager A, ESD</p>		<p><b>APPROVED:</b> LEO A. ROMERO Acting Port Manager A</p>	
								<p><b>SHEET NO.</b> 4 of 5</p>	
								<p><b>DATE:</b> 17 MAY 2022</p>	



100 Watts INTEGRATED SOLAR LAMP  
30V / 100W Solar Panel  
25.6V / 30Ah Lithium Battery  
SMD3030 SMD LED Lights  
192 Lumen / Watt



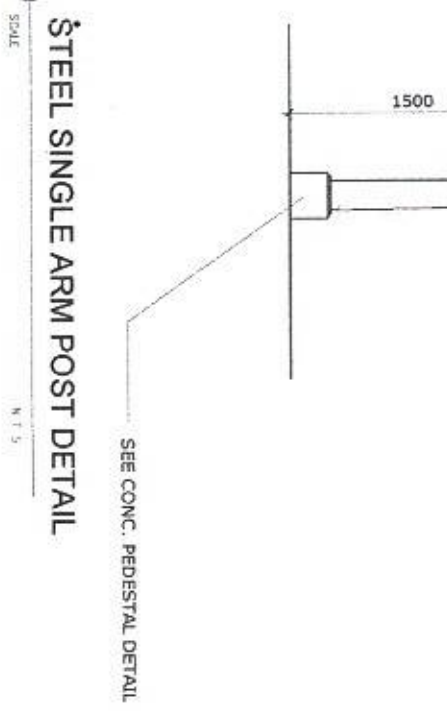
BASE PLATE DETAIL



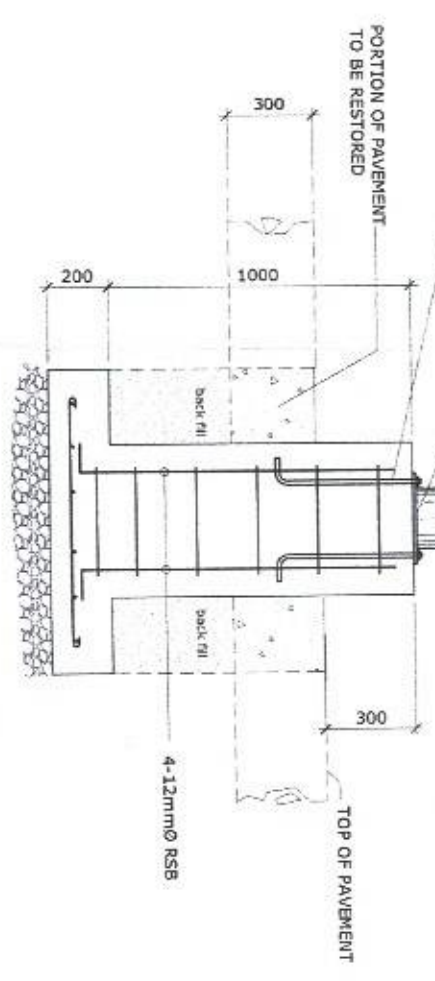
LOCATION PLAN

made of reflectorized sticker (Red)

7 Meter STEEL LAMP POST  
2.8mm thk. x 3" TOP x 6.5"  
Baseplate - 3/4" x 10" x 10"  
Anchor Bolt - 3/4" x 20"



STEEL SINGLE ARM POST DETAIL



CONC. PEDESTAL DETAIL

PROJECT TITLE: REPAIR OF PORT LIGHTING SYSTEM AND PAINTING WORKS  
PORT OF BANSUD, ORIENTAL MINDORO

SHEET CONTENTS: AS SHOWN

SCALE: AS SHOWN

PREPARED BY:

FERNANDO J. GALVEZO  
Engineering Assistant A

SUBMITTED BY:

JESSIE J. MERILLO  
Engineer B

CHECKED / REVIEWED BY:

RONALD O. MARIAG  
Acting Principal Engineer A

RECOMMENDING APPROVAL:

MARGARITO P. DIMAILUG  
Acting Division Manager A, ESD

APPROVED:

LEO A. ROMERO  
Acting Port Manager A

AS SHOWN

SHEET NO. 5 of 5

DATE: 17 MAY 2022

