



## VARIOUS REPAIR WORKS

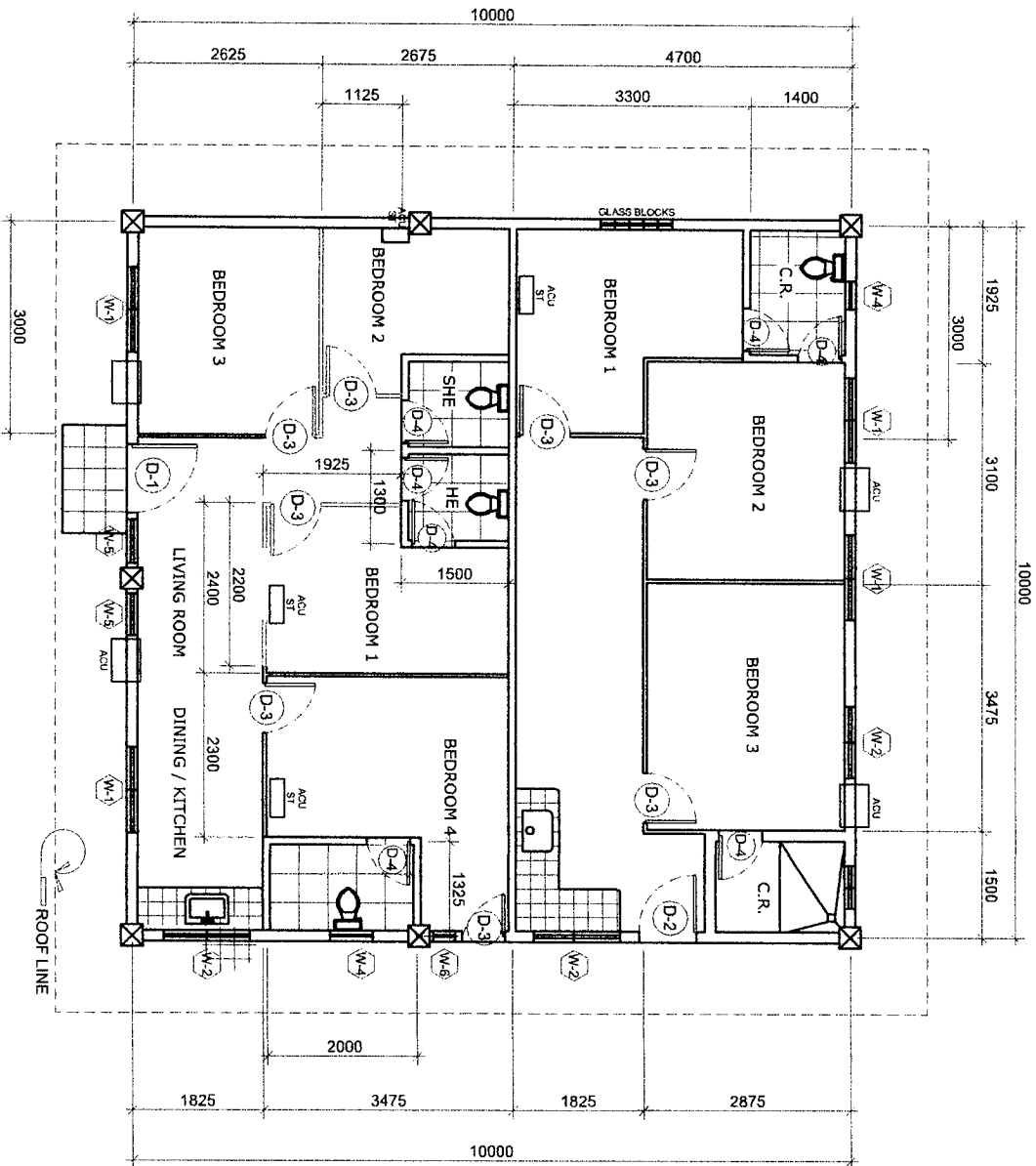
PORT OF CALAPAN, ORIENTAL MINDORO



DEMOLITION & INSTALLTION WORKS  
(EMPLOYEES QUARTERS AND PPD QUARTERS)

--- PARTITION (HARDIFLEX AND METAL FURRING) TO BE REMOVED  
--- 4 SETS OF DOORS TO BE REMOVED  
--- WINDOW TO BE REMOVED

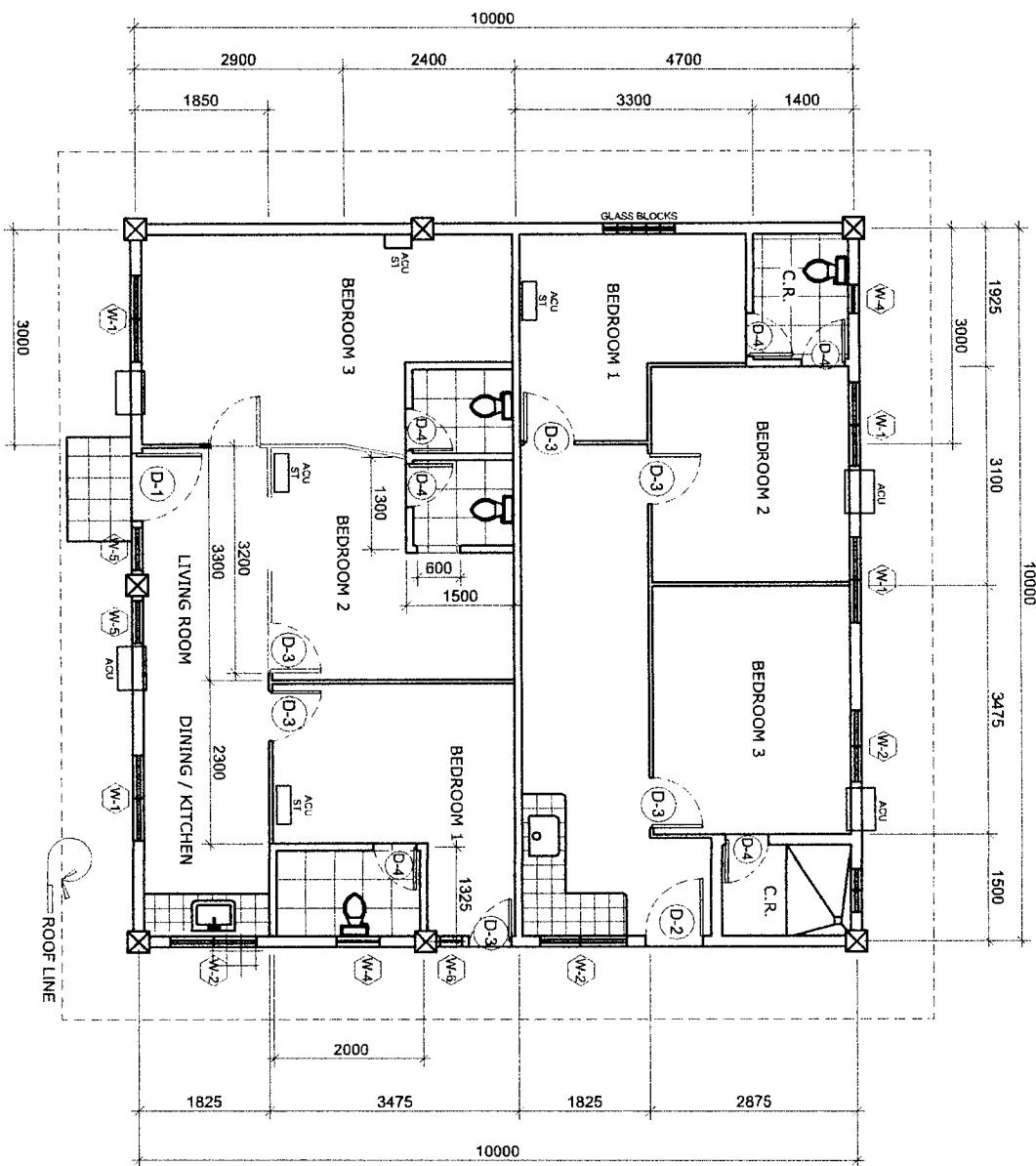
--- PARTITION TO BE INSTALLED (HARDIFLEX ON METAL FURRING SPACED @ 400x600 O.C.)  
--- 2 SETS OF REUSE DOORS TO BE RE-INSTALLED  
--- WINDOW TO BE RE-INSTALLED



EXISTING FLOOR PLAN  
(EMPLOYEES QUARTERS AND PPD QUARTERS)

SCALE

1:100 M



FLOOR PLAN (REPAIR WORKS)

SCALE

1:100 M

PROJECT TITLE:

VARIOUS REPAIR WORKS  
PORT OF CALAPAN, ORIENTAL MINDORO

SHEET CONTENTS:

SCALE:  
AS SHOWN

PREPARED BY:

RONMEL C. MALUBAY  
Draftsman II

SUBMITTED BY:

CONRABE E. CASAPAO JR.  
Assistant Port Engineer

CHECKED / REVIEWED BY:

RONALD O. MATBAG  
Acting Principal Engineer A

RECOMMENDING APPROVAL BY:

MARGARITO T. DIMAILIG  
Acting Division Manager A, ESD

APPROVED BY:

ELVIS R. MEDALLA  
Port Manager A

SHEET NO.  
2 of 16

DATE:  
24 JULY, 2020

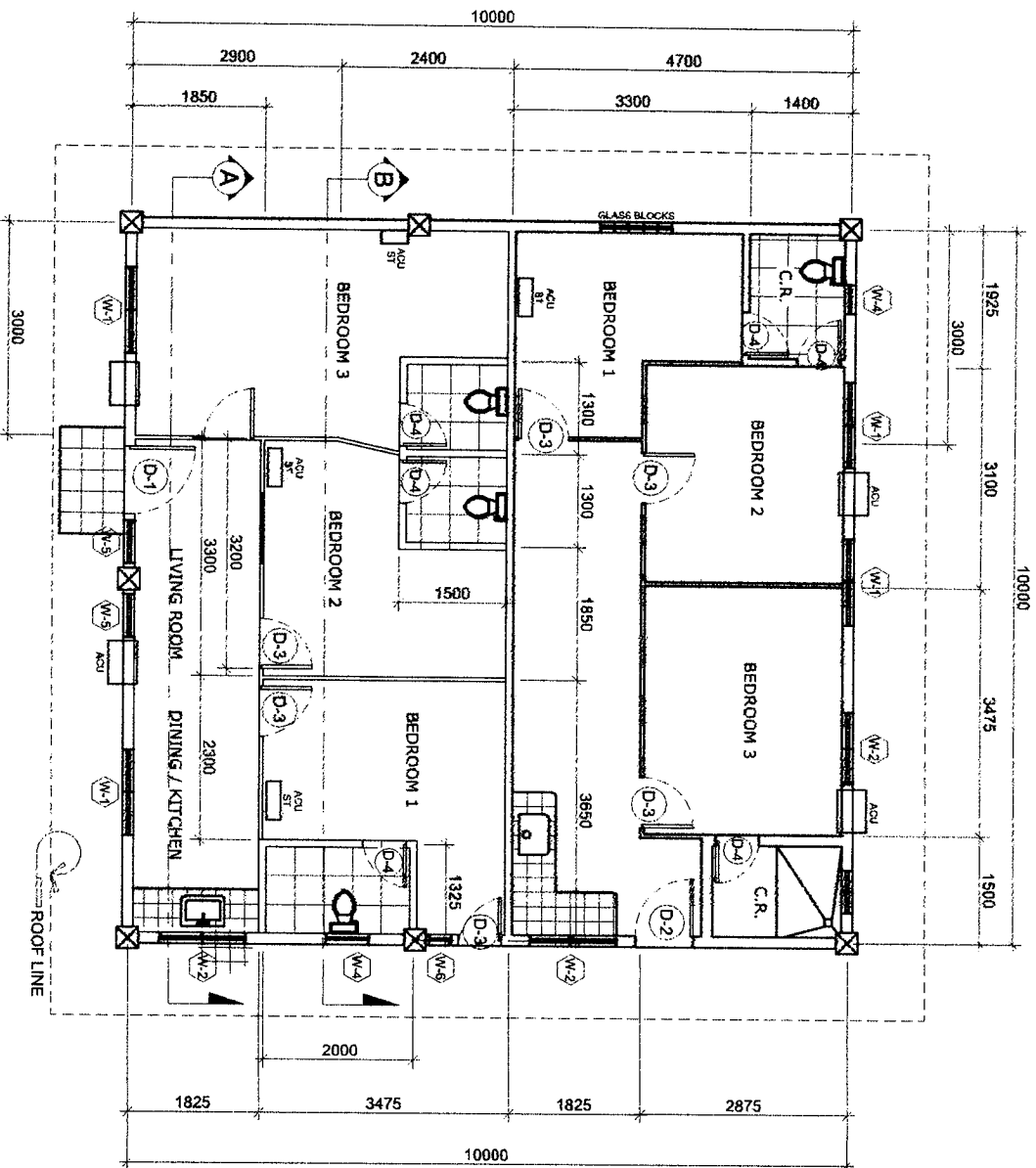
PHILIPPINE  
PORTS  
AUTHORITY  
PMO-MINDORO



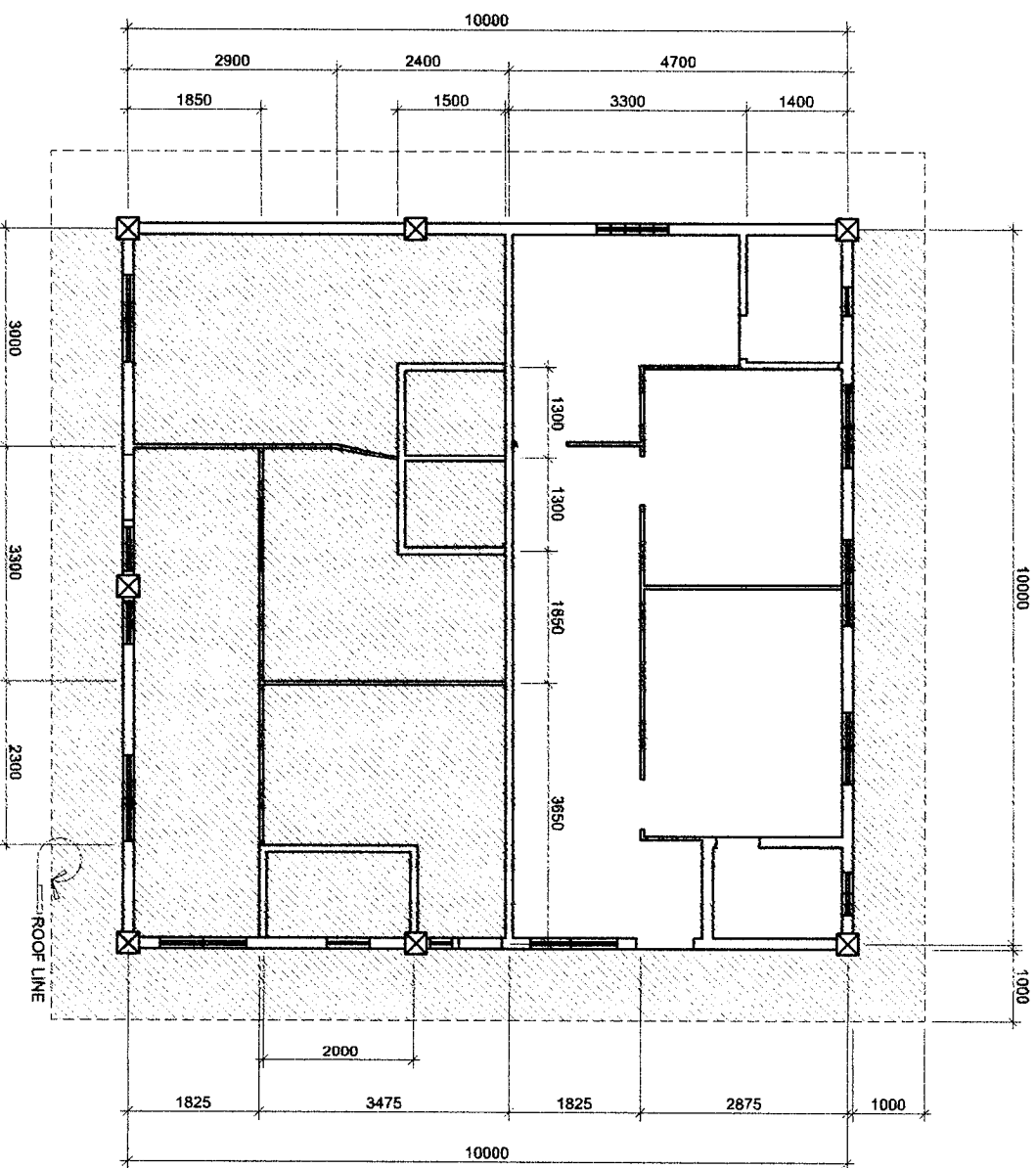
REPAINTING WORKS  
(EMPLOYEES QUARTERS AND PPD QUARTERS)

- INTERIOR WALL TO BE REPAINTED BY ELASTOMERIC PAINT
- EXTERIOR WALL TO BE REPAINTED BY ELASTOMERIC PAINT
- 4 SETS OF DOORS TO BE REPAINTED BY ODE PAINT

- CEILING TO BE REPAINTED



FLOOR PLAN (REPAINTING)  
SCALE 1:100 M



CEILING PLAN (REPAINTING)  
SCALE 1:100 M

PROJECT TITLE:

VARIOUS REPAIR WORKS  
PORT OF CALAPAN, ORIENTAL MINDORO

SHEET CONTENTS:

AS SHOWN

SCALE:  
AS SHOWN

PREPARED BY:

RONNELL C. MALUBAY  
Draftsman II

SUBMITTED BY:

CONRADO E. CASAPAO JR.  
Assistant Port Engineer

CHECKED / REVIEWED BY:

RONALD O. MATBAG  
Acting Principal Engineer A

RECOMMENDING APPROVAL BY:

MARGARITO P. MANALIG  
Acting Division Manager A, ESD

APPROVED BY:

ELVIS R. MEDALLA  
Port Manager A

SHEET NO.

3 of 16

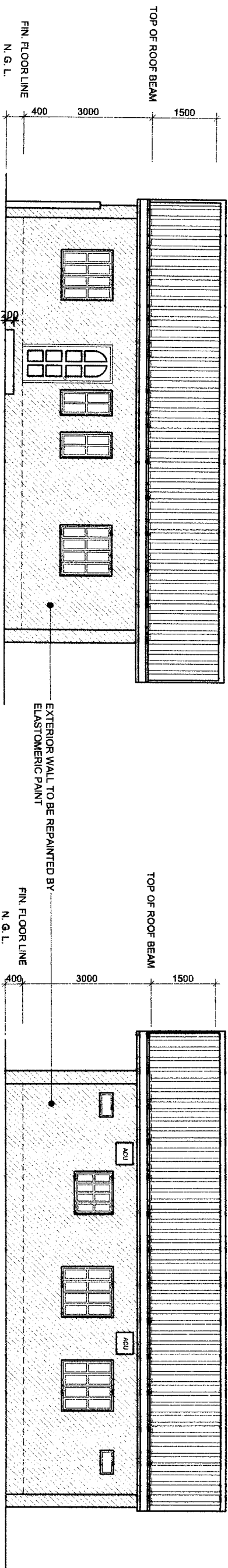
DATE:

24 JULY, 2020

PHILIPPINE  
PORTS  
AUTHORITY  
PMO- MINDORO

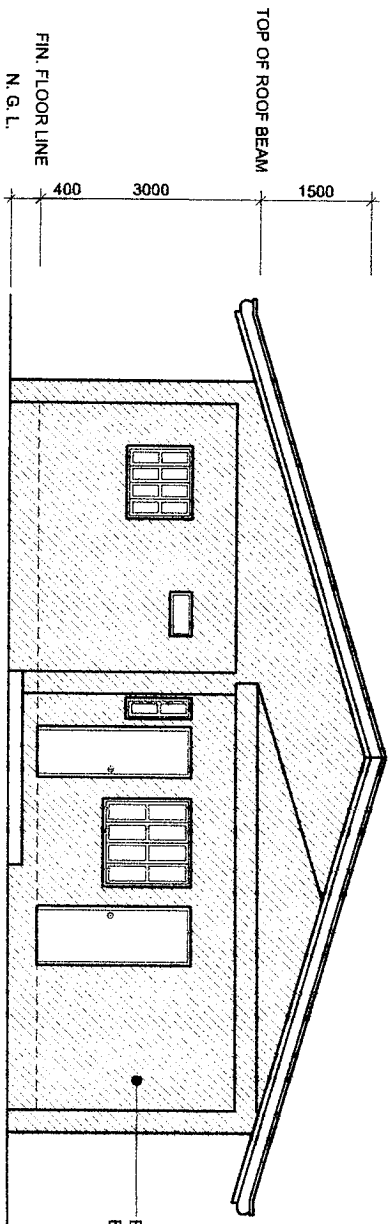


REPAIRING WORKS  
(EMPLOYEES QUARTERS AND PPD QUARTERS)

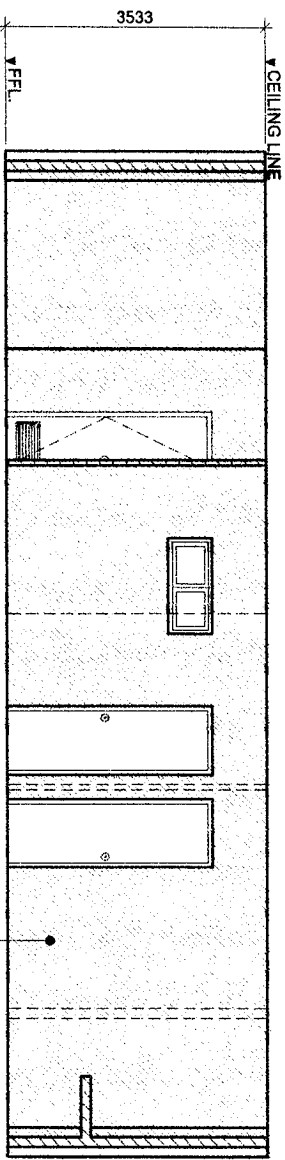


FRONT ELEVATION  
SCALE 1:100 M

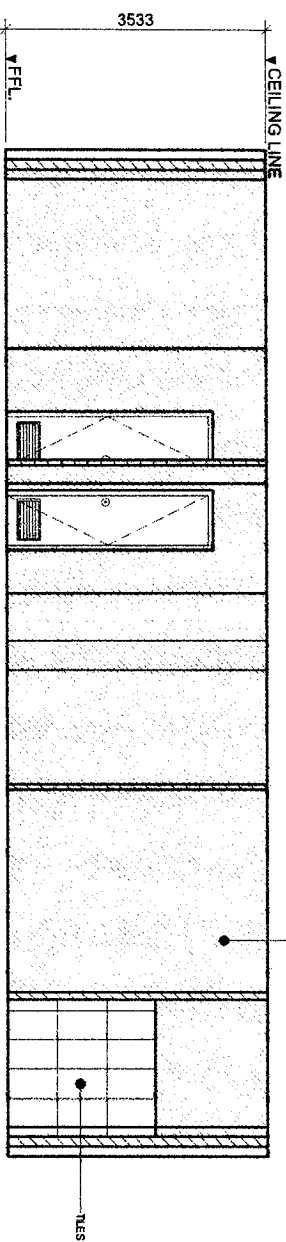
REAR ELEVATION  
SCALE 1:100 M



RIGHT ELEVATION  
SCALE 1:100 M



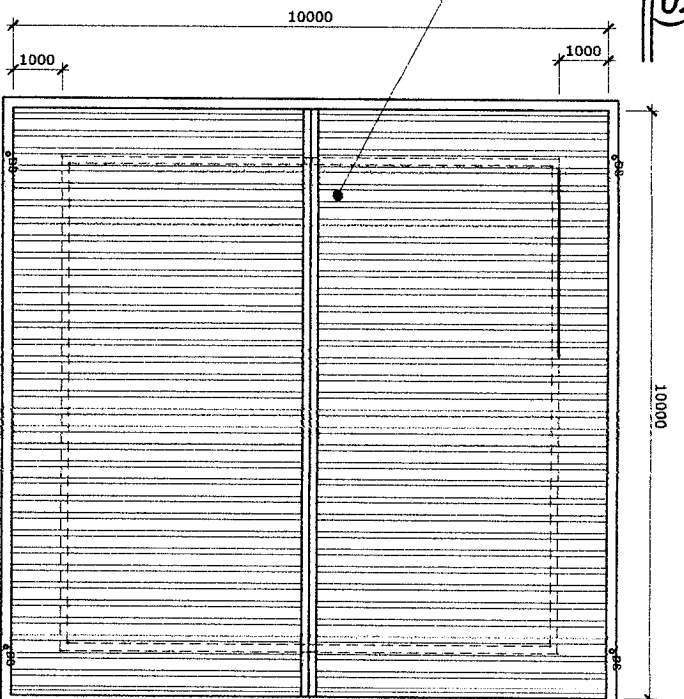
SECTION THRU "A"  
SCALE 1:75 M



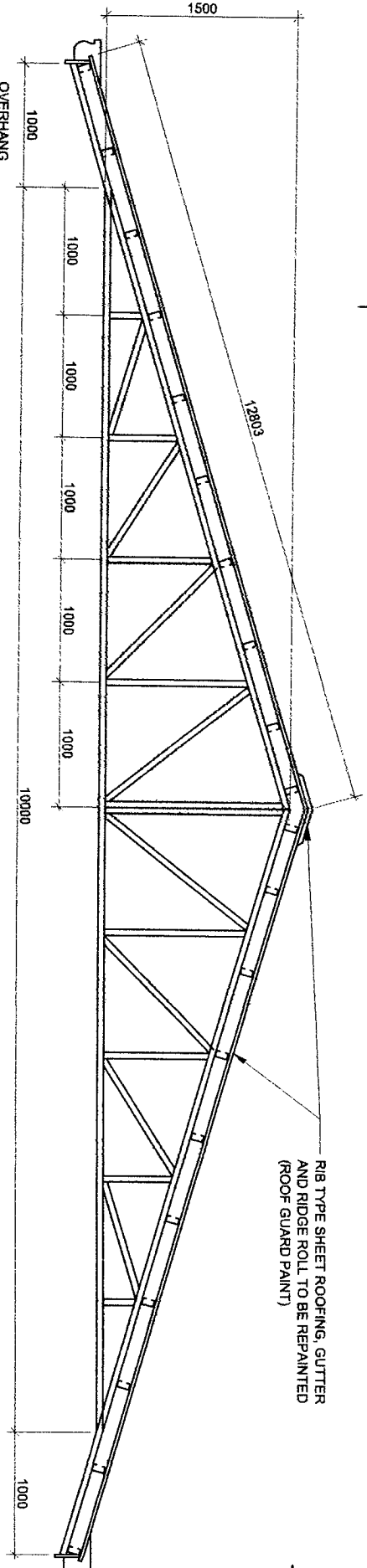
SECTION THRU "B"  
SCALE 1:75 M

PROJECT TITLE: VARIOUS REPAIR WORKS PORT OF CALAPAN, ORIENTAL MINDORO		SHEET CONTENTS: AS SHOWN		SCALE: AS SHOWN	
PREPARED BY: ROMEL C. MALUBAY Draftsman II		SUBMITTED BY: CONRADO E. CASAPAO JR. Assistant Port Engineer		CHECKED / REVIEWED BY: RONALD O. MATBAG Acting Principal Engineer A	
RECOMMENDING APPROVAL BY: MARGARITO P. DITMANG Acting Division Manager A, ESD		APPROVED BY: ELVIS R. MEDALLA Port Manager A		DATE: 24 JULY, 2020	
PHILIPPINE PORTS AUTHORITY PMO-MINDORO					

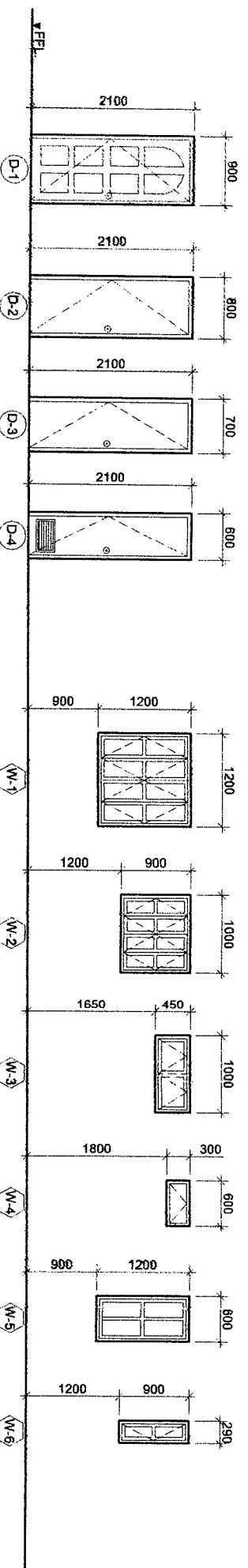
ELEV  
SCALE



ROOM  
SCALE



TR  
SCALE





**SCHE**  
SCALE


NOTE: STEEL WINDOWS TO BE REPAINTED  
( QADE PAINT )

**VARIOUS REPAIR WORKS  
PORT OF CALAPAN, ORIENTAL MINDORO**


ROMELL C. MALUBAY  
Draftsman II

SUBMITTED BY:   
CONRAD E. CASAPAO JR.  
Assistant Port Engineer

CHECKED / REVIEWED BY:   
RONALD O. MATBAG  
Acting Principal Engineer A

RECOMMENDING APPROVAL BY: 

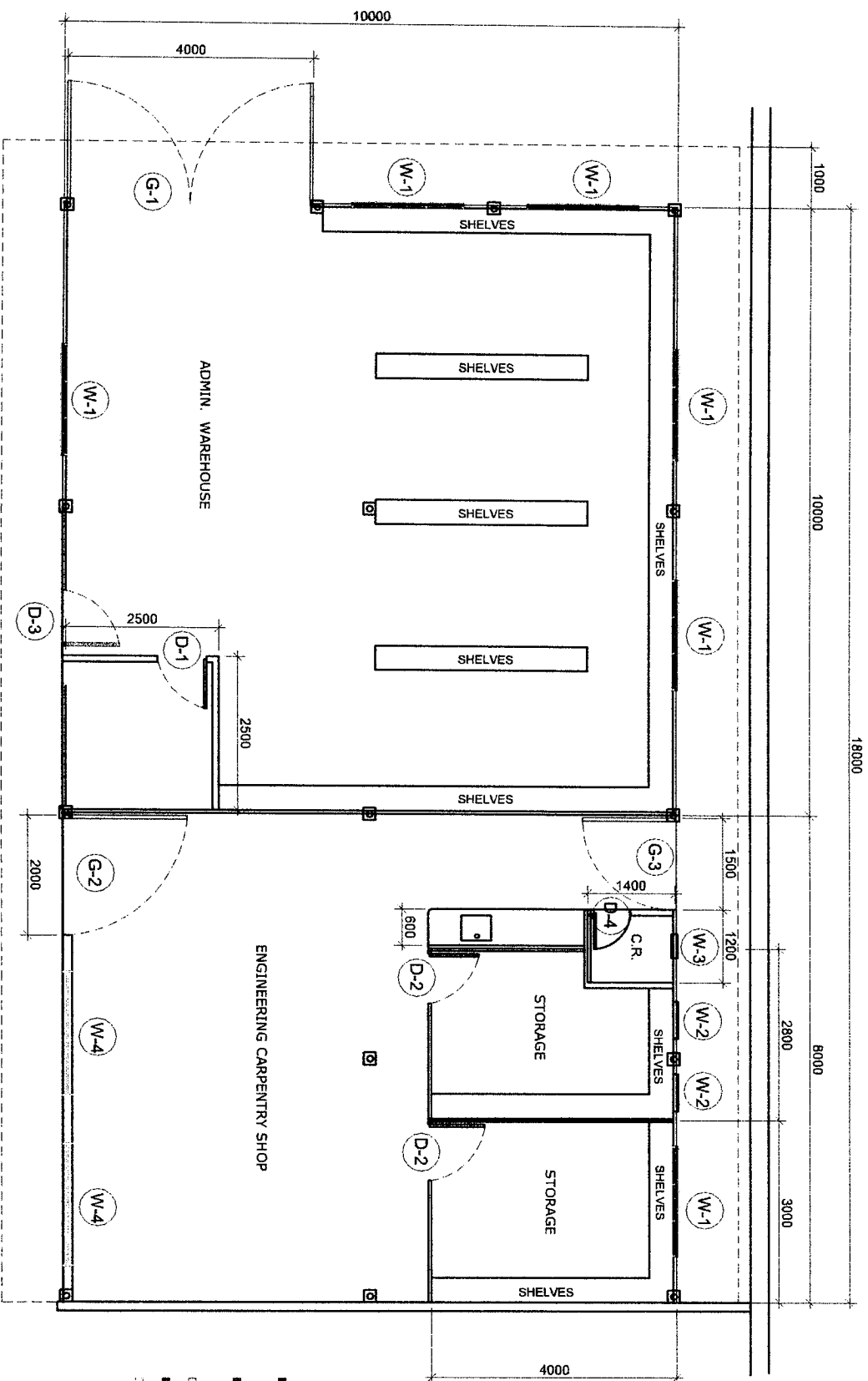
MARGARTITO P. DIMALLIG  
Acting Division Manager A, ESD

APPROVED BY:   
ELVIS R. MEDALLA  
Port Manager A

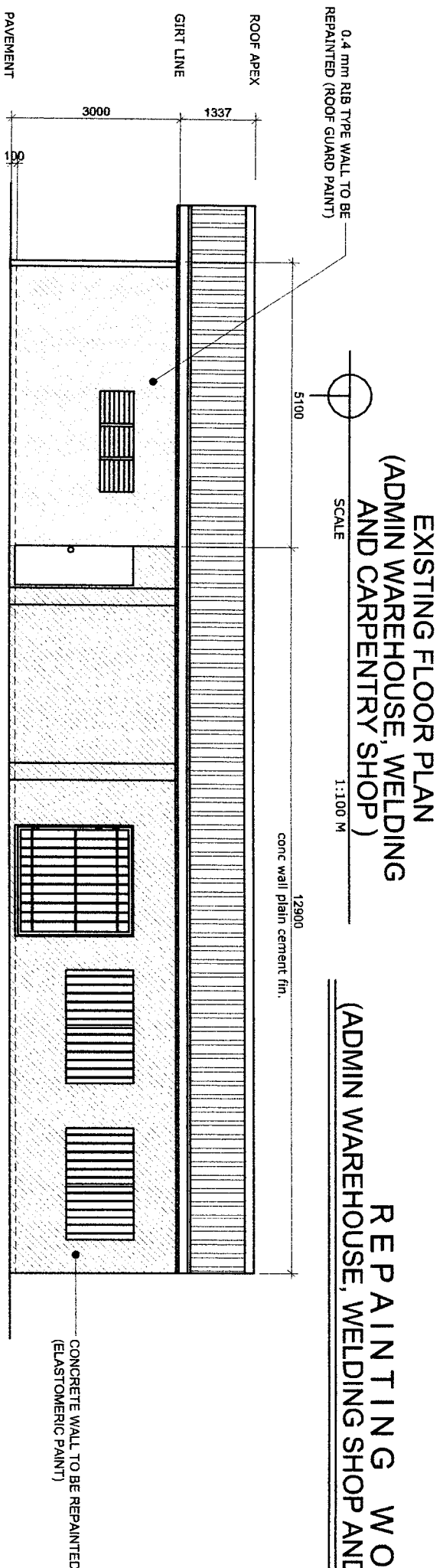
AS SHOWN

AS SHOWN  
SHEET NO. 5 of 16

DATE: 24 JULY 2020



- CONCRETE EXTERIOR WALL TO BE REPAINTED (ELASTOMERIC PAINT)
- RIB TYPE EXTERIOR WALL TO BE REPAINTED (ROOF GUARD)
- DOOR TO BE REPAINTED (ODE PAINT)
- GATES TO BE REPAINTED (AUTOMOTIVE PAINT)
- WINDOWS TO BE REPAINTED (AUTOMOTIVE PAINT)



EXISTING FLOOR PLAN  
(ADMIN WAREHOUSE, WELDING  
AND CARPENTRY SHOP)

REPAINTING WORKS  
(ADMIN WAREHOUSE, WELDING SHOP AND CARPENTRY SHOP)

FRONT ELEVATION  
SCALE 1:100 M

PROJECT TITLE:

VARIOUS REPAIR WORKS  
PORT OF CALAPAN, ORIENTAL MINDORO

SHEET CONTENTS:

SCALE:  
AS SHOWN

PREPARED BY:

RONWELL C. MALUBAY  
Draftsman II

SUBMITTED BY:

CONRADO E. CASAPAO JR.  
Assistant Port Engineer

CHECKED / REVIEWED BY:

RONAL D. O. MABAG  
Acting Principal Engineer A

RECOMMENDING APPROVAL BY:

MARGARITO J. DIMAILIG  
Acting Division Manager A, ESD

APPROVED BY:

ELVIS R. MEDALLA  
Port Manager A

AS SHOWN

SHEET NO.  
6 of 16

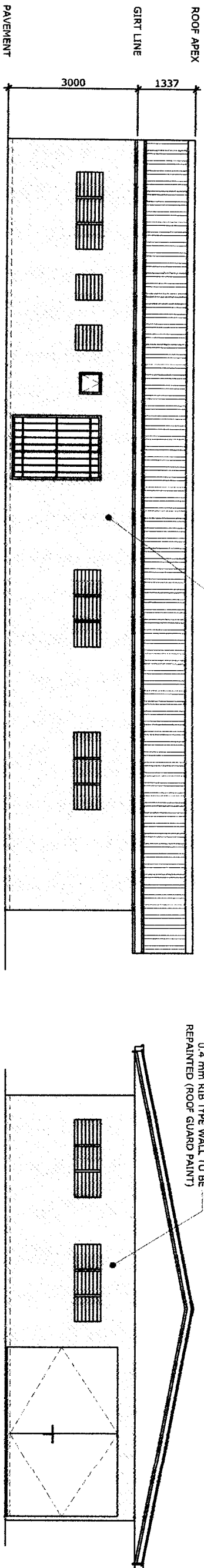
PHILIPPINE  
PORTS  
AUTHORITY

PMO-MINDORO



DATE:  
24 JULY, 2020

REPAINTING WORKS

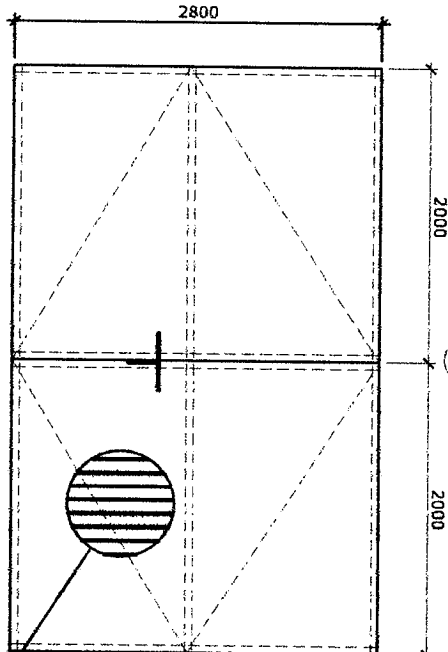


REAR ELEVATION

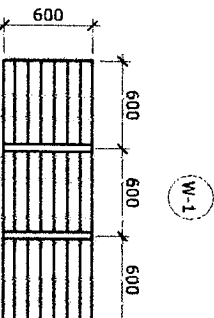
SCALE 1:100 M

LEFT ELEVATION

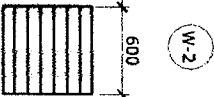
SCALE 1:100 M



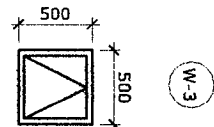
SET REQUIRED: 1 SETS  
LOCATION: ADMIN. STORAGE



SET REQUIRED: 6 SETS  
LOCATION: ADMIN STORAGE



2 SETS



SET REQUIRED: 1 SETS  
LOCATION: CARPENTRY SHOP

G.I. SHEET LOUVER TYPE WINDOW

AWNING TYPE WINDOW

12mm SQ. BAR

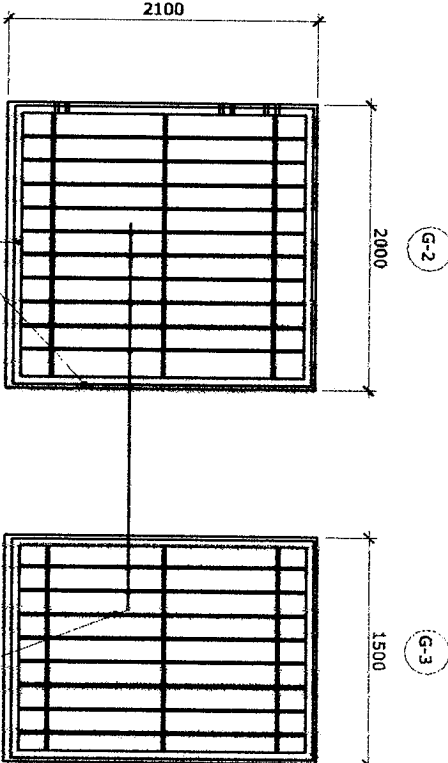
1 1/2" Ø G.I. PIPE

SET REQUIRED: 2 SETS  
LOCATION: CARPENTRY SHOP

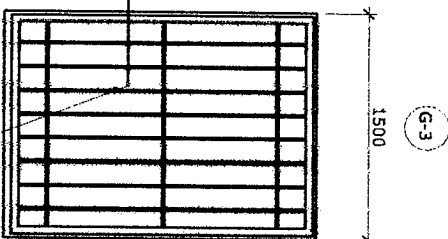
F.F.L.

SCHEDULE OF WINDOWS

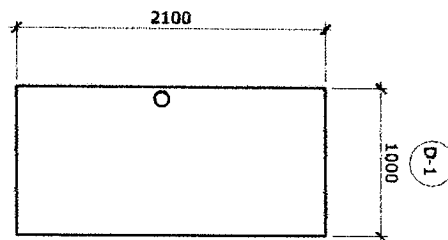
SCALE 1:50 M



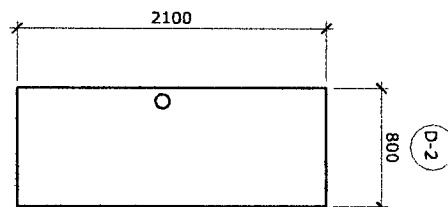
1 1/2" Ø G.I. PIPE FRAME  
SET REQUIRED: 1 SETS  
LOCATION: CARPENTRY SHOP



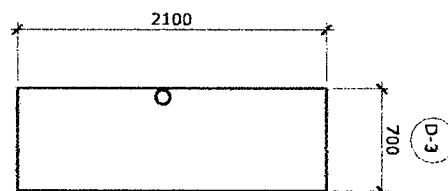
12mm SQ. BAR  
SET REQUIRED: 1 SETS  
LOCATION: CARPENTRY SHOP



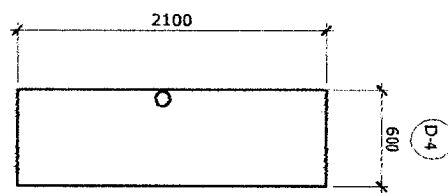
SET REQUIRED: 2 SETS  
LOCATION: CARPENTRY SHOP  
TYPE: PANEL DOOR



SET REQUIRED: 1 SETS  
LOCATION: ADMIN. STORAGE  
TYPE: FLUSH DOOR



SET REQUIRED: 1 SETS  
LOCATION: ADMIN. STORAGE  
TYPE: FLUSH DOOR



SET REQUIRED: 1 SETS  
LOCATION: CR  
TYPE: PVC DOOR

STEEL GRILLS DETAIL

SCHEDULE OF GATES

SCALE 1:50 M

SCHEDULE OF DOORS

SCALE 1:50 M

NOTE: FLUSH DOORS TO BE REPAINTED (ADE PAINT)  
GATES, STEEL GRILLS AND STEEL WINDOWS TO BE  
REPAINTED (AUTOMOTIVE PAINT)

PROJECT TITLE:

VARIOUS REPAIR WORKS  
PORT OF CALAPAN, ORIENTAL MINDORO

SHEET CONTENTS:

SCALE: AS SHOWN

PREPARED BY:

RONIEL C. MALUBAY  
Draftsman II

SUBMITTED BY:

CONRADO E. CASAPAO JR.  
Assistant Port Engineer

CHECKED / REVIEWED BY:

RONALD O. MARIAG  
Acting Principal Engineer A

RECOMMENDING APPROVAL BY:

MARGARITO P. DIMAG  
Acting Division Manager A, ESD

APPROVED BY:

ELVIS R. MEDALLA  
Port Manager A

AS SHOWN

SHEET NO.

7 of 16

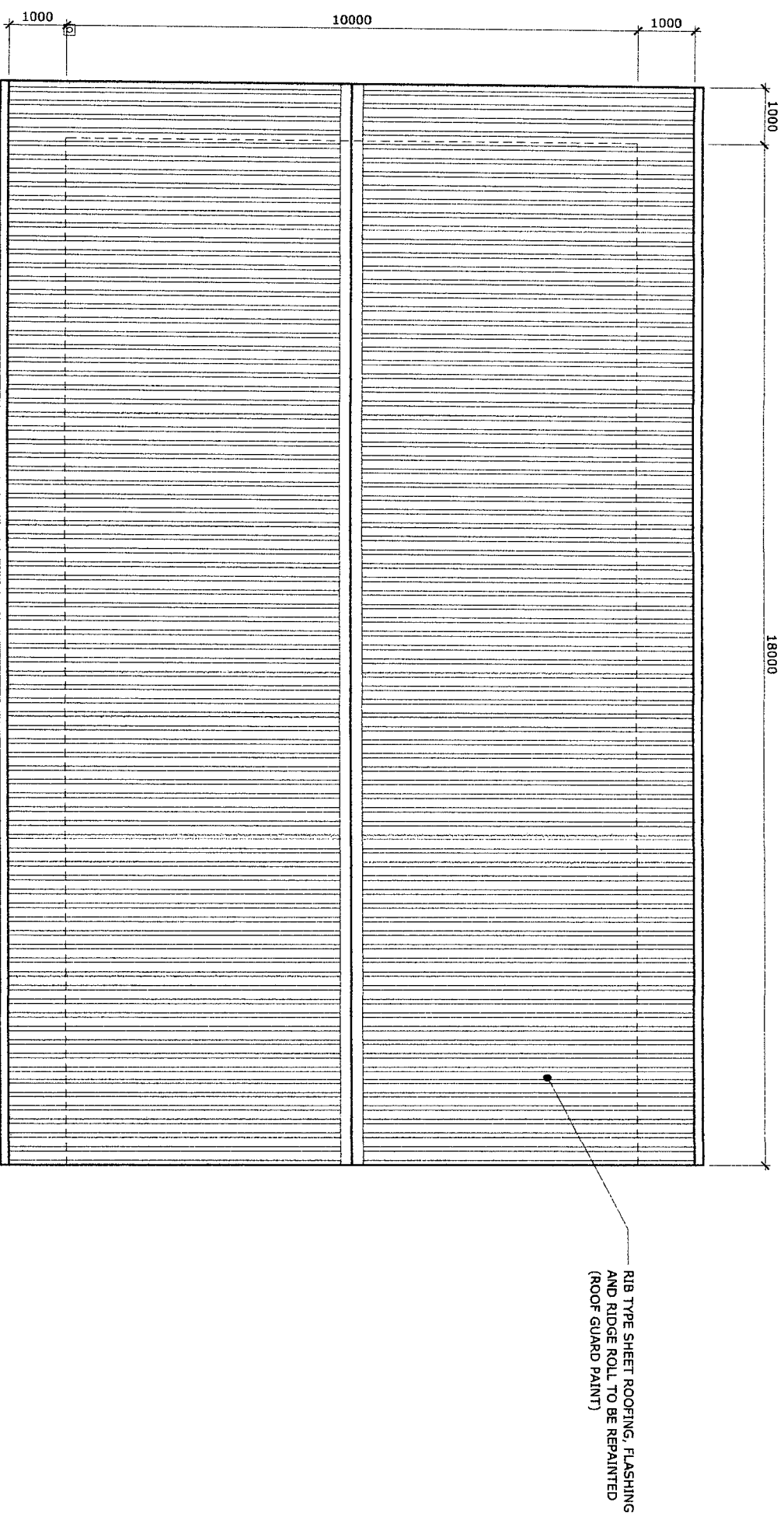
DATE:

24 JULY, 2020

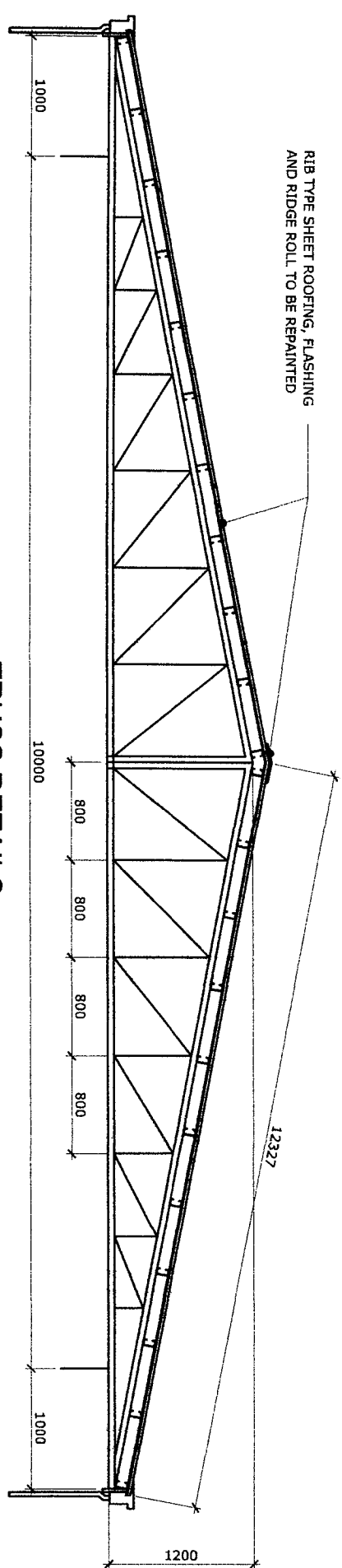





REPAINTING WORKS  
(ADMIN WAREHOUSE, WELDING SHOP AND CARPENTRY SHOP)



ROOF FRAMING PLAN  
SCALE 1:100M

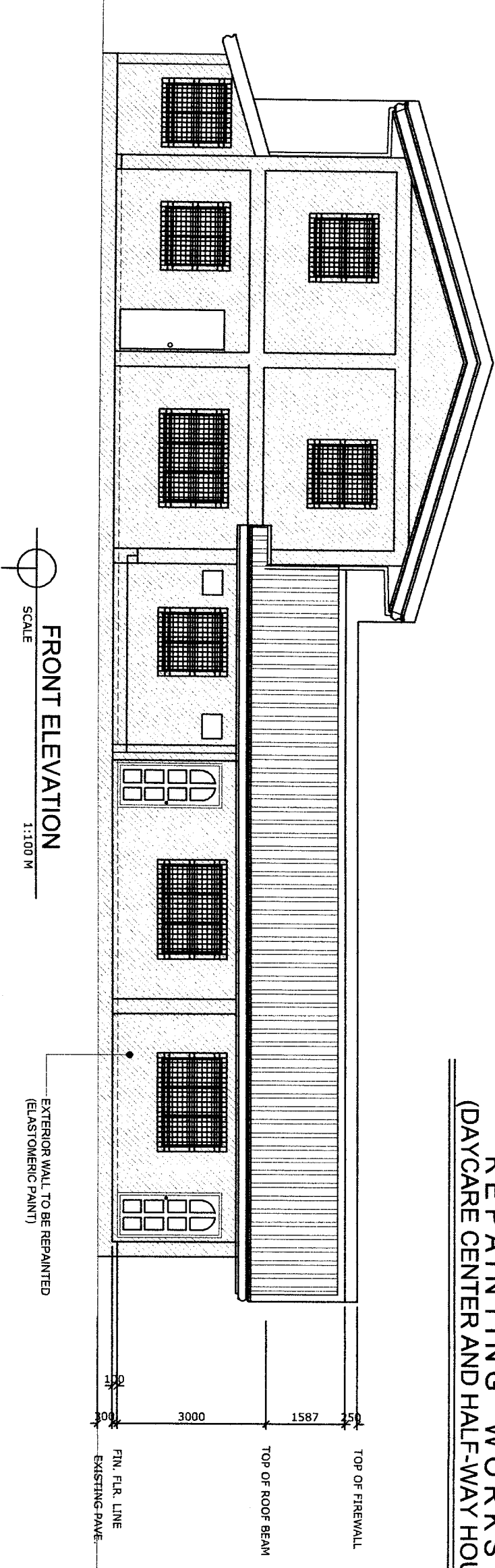


TRUSS DETAILS  
SCALE 1:50M

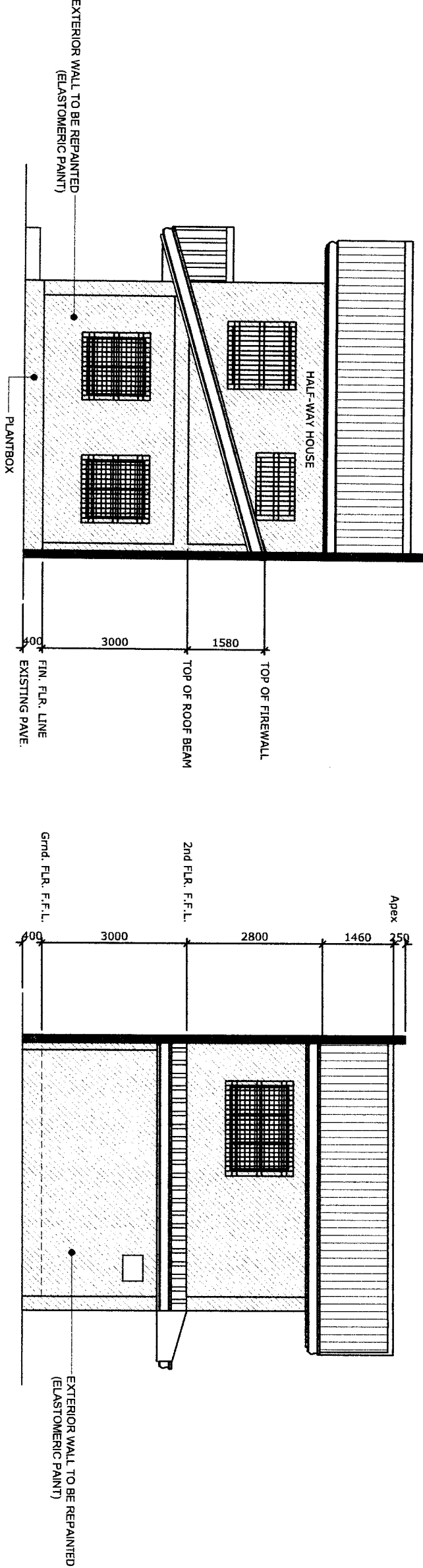
	PROJECT TITLE: VARIOUS REPAIR WORKS PORT OF CALAPAN, ORIENTAL MINDORO		SHEET CONTENTS: AS SHOWN		SCALE: AS SHOWN	
	PREPARED BY: ROMELL C. MALUBAY Draftsman II	SUBMITTED BY: CONRADO E. CASAPAO JR. Assistant Port Engineer	CHECKED / REVIEWED BY: RONALD O. MARIAG Acting Principal Engineer A	RECOMMENDING APPROVAL BY: MARGARITO P. DIMAILIG Acting Division Manager A, ESD	APPROVED BY: ELVIS R. MEDALLA Port Manager A	SHEET NO. 8 of 16 DATE: 24 JUL Y, 2020



REPAINTING WORKS  
(DAYCARE CENTER AND HALF-WAY HOUSE)



FRONT ELEVATION  
SCALE 1:100 M



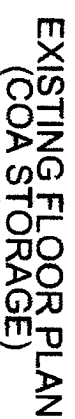
RIGHT ELEVATION  
SCALE 1:100 M

LEFT ELEVATION  
SCALE 1:100 M

PROJECT TITLE: VARIOUS REPAIR WORKS PORT OF CALAPAN, ORIENTAL MINDORO			SHEET CONTENTS: AS SHOWN		SCALE: AS SHOWN	
PREPARED BY: ROMEL C. MALUBAY Draftsman II			SUBMITTED BY: CONRADO CABAPAO JR. Assistant Port Engineer		CHECKED / REVIEWED BY: RONALD O. MATIBAG Acting Principal Engineer A	
RECOMMENDING APPROVAL BY: MARGARITO B. BUALIG Acting Division Manager A, ESD			APPROVED BY: ELVIS R. MEDALLA Port Manager A		AS SHOWN	
SHEET NO. 10 of 16			DATE: 24 JULY, 2020			



■ EXTERIOR WALL TO BE REPAINTED  
(ELASTOMERIC PAINT)



**PROJECT TITLE:**

**VARIOUS REPAIR WORKS  
PORT OF CALAPAN, ORIENTAL MINDORO**

**SHEET CONTENTS:**

SCALE:  
AS SHOWN

**PREPARED BY:**

SUBMITTED BY:

CHECKED / REVIEWED BY:

RECOMMENDING APPROVAL BY:

APPROVED BY:

**AS SHOWN**

**SHEET NO.**



PHILIPPINE  
PORTS  
AUTHORITY  
PMO-MINDORO

~~ROMELL C. MALUBAY~~

~~CONRAD E. CABAPAO JR.~~

RONALD O. MATIBAG

~~MARGARITO P. DIMAILIG~~

ELVIS R. MEDALLA

DATE: \_\_\_\_\_

100

✓ Draftsman II

Assistant Port Engineer

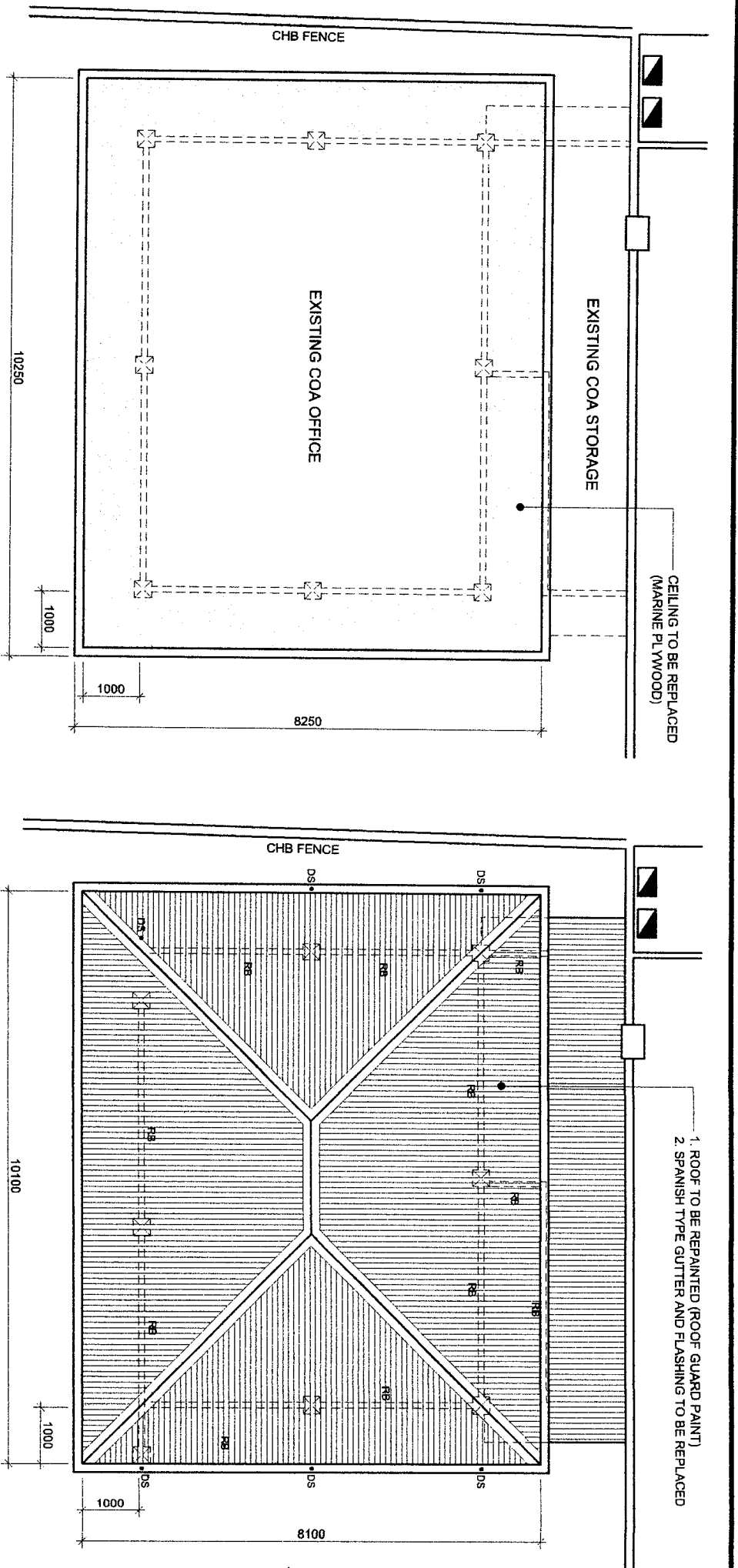
Acting Principal Engineer A

~~Acting Division Manager A, ESC~~

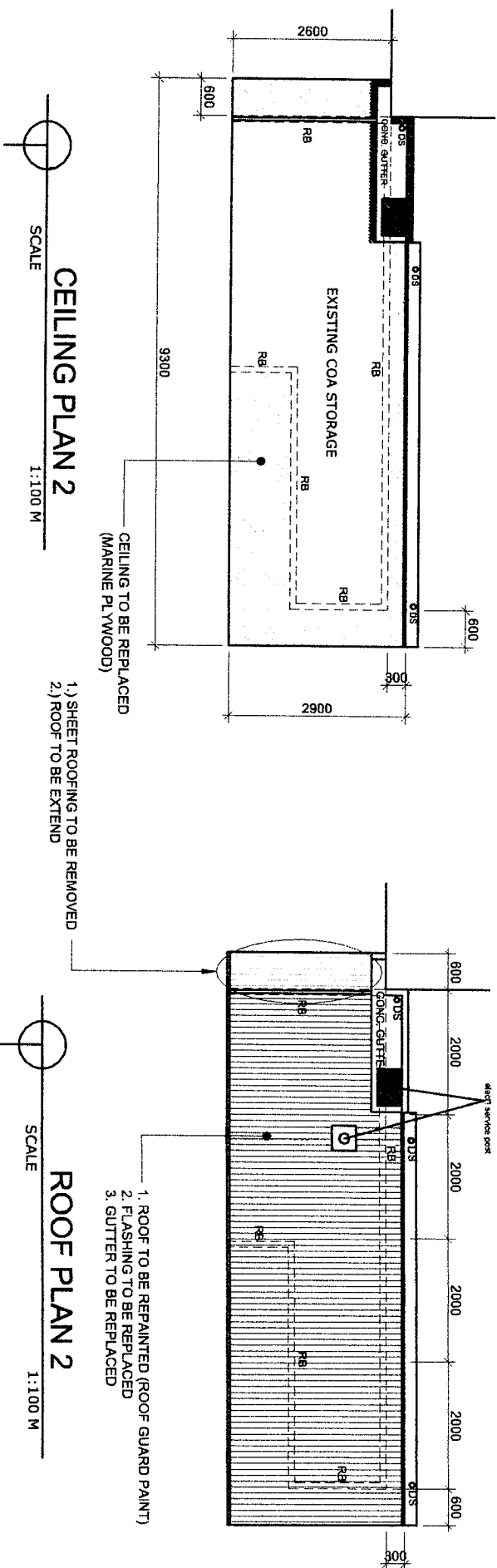
Port Manager A

24 JULY, 2020

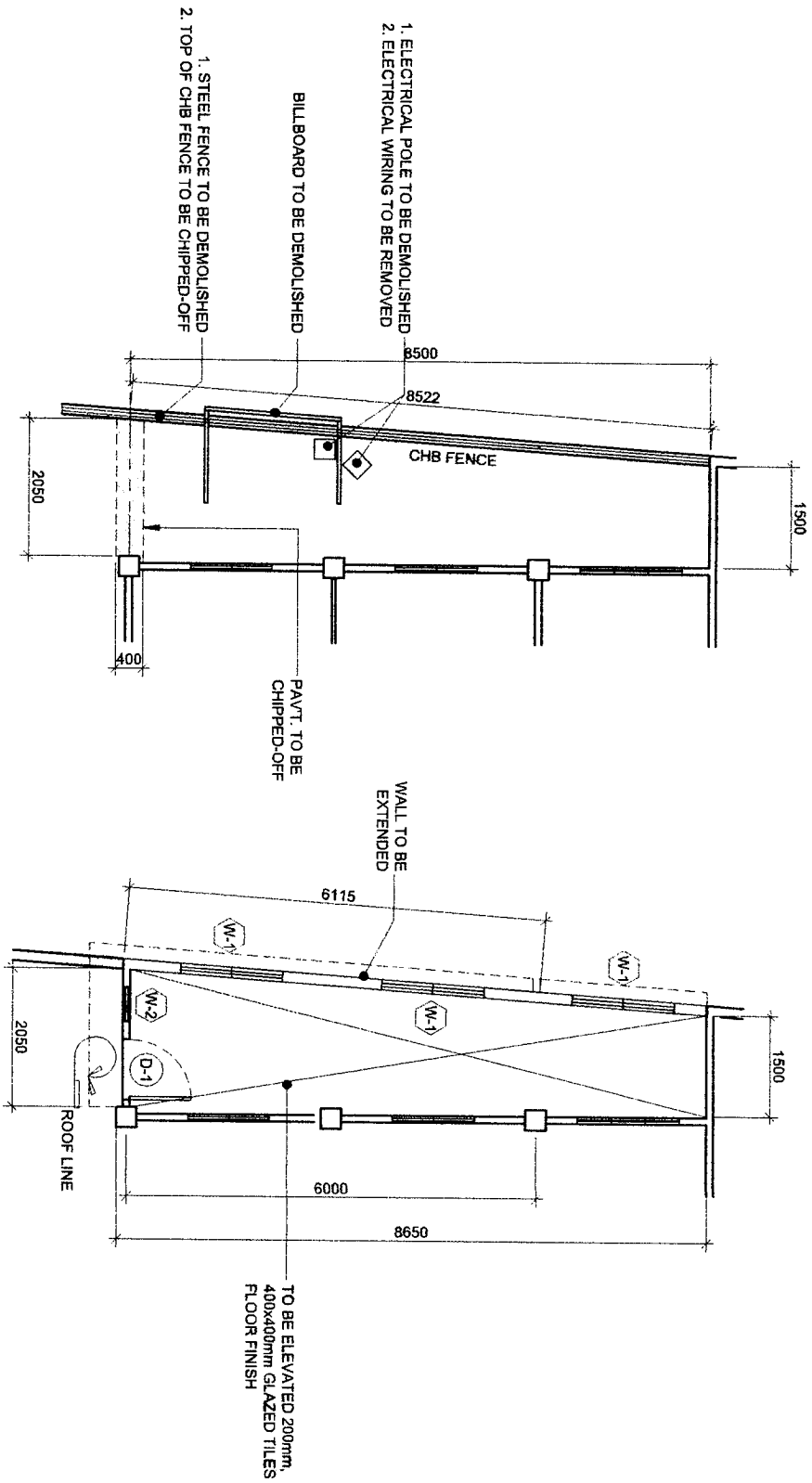




## REPAINTING AND REPAIR WORKS (COA OFFICE)



PROJECT TITLE:		VARIOUS REPAIR WORKS		SHEET CONTENTS:	
PORT OF CALAPAN, ORIENTAL MINDORO		AS SHOWN		AS SHOWN	
PREPARED BY:		SUBMITTED BY:		RECOMMENDING APPROVAL BY:	
RONNELL C. MALUBAY		CONRAD E. CASAPAO JR.		MARGARITO P. PIMENTA JR.	
Draftsman II		Assistant Port Engineer		Acting Division Manager A, ESD	
CHECKED / REVIEWED BY:		APPROVED BY:		DATE:	
RONALD O. MATBAG		ELVIS R. MEDALLA		24 JULY, 2020	
Acting Principal Engineer A		Port Manager A			



FLOOR PLAN

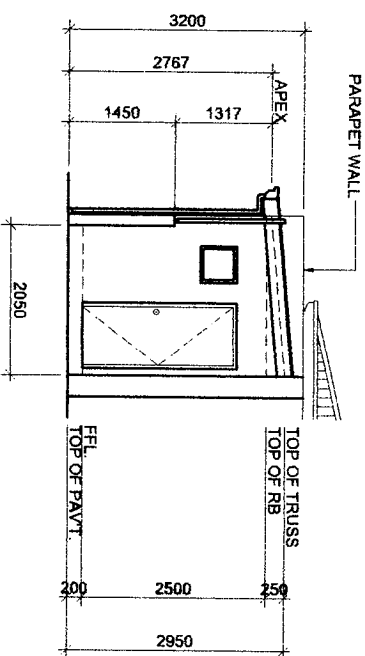
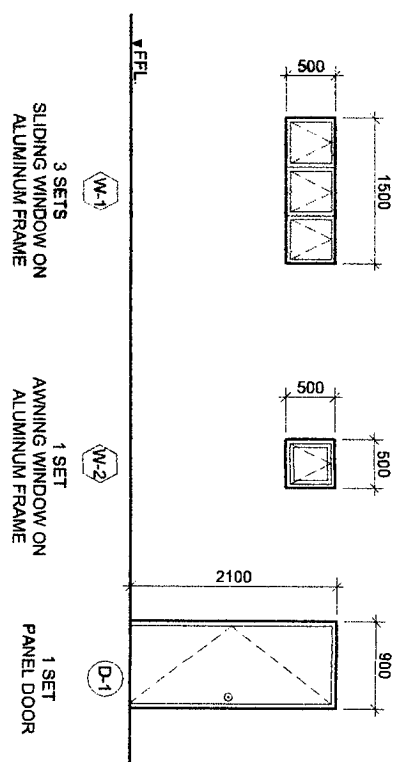
SCALE 1:100 M

FLOOR PLAN  
(PROP. COA STORAGE)

SCALE 1:100 M

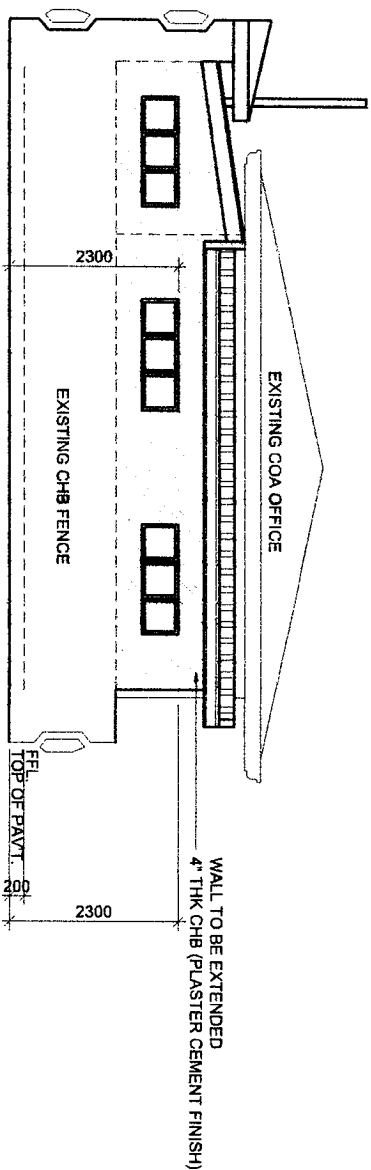
SCHEDULE OF DOORS AND WINDOWS

SCALE 1:75 M



FRONT ELEVATION

SCALE 1:100 M



LEFT ELEVATION

SCALE 1:100 M

PROJECT TITLE:

VARIOUS REPAIR WORKS  
PORT OF CALAPAN, ORIENTAL MINDORO

SHEET CONTENTS:

SCALE:  
AS SHOWN

PREPARED BY:

RONELL C. MALUBAY  
Draftsman II

SUBMITTED BY:

CONRADO E. CASAPAO JR.  
Assistant Port Engineer

CHECKED / REVIEWED BY:

RONALD O. MATBAG  
Acting Principal Engineer A

RECOMMENDING APPROVAL BY:

MARGARITO P. DIMALILIG  
Acting Division Manager A, ESD

APPROVED BY:

ELVIS R. MEDALLA  
Port Manager A

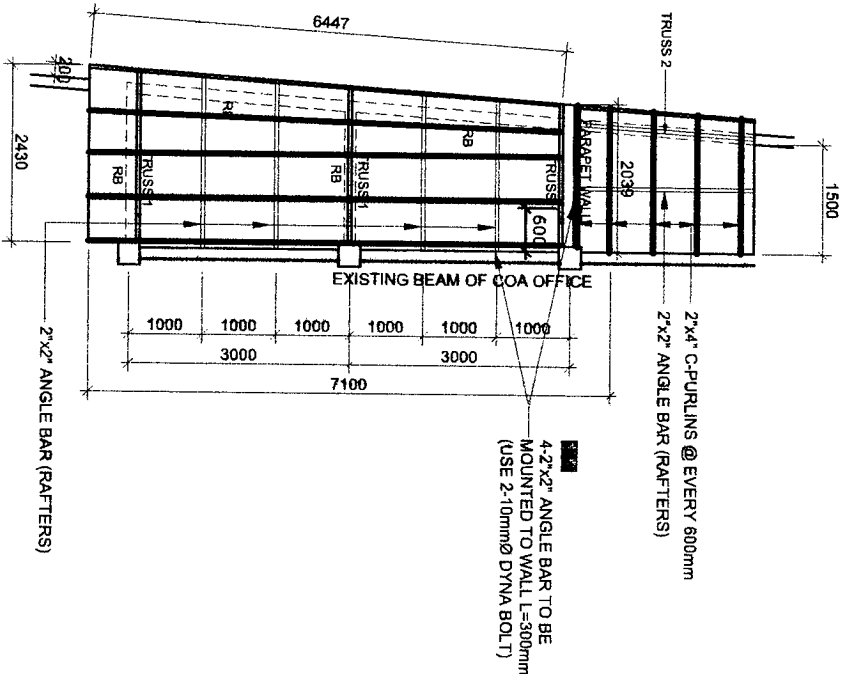
AS SHOWN

SHEET NO.  
13 of 16

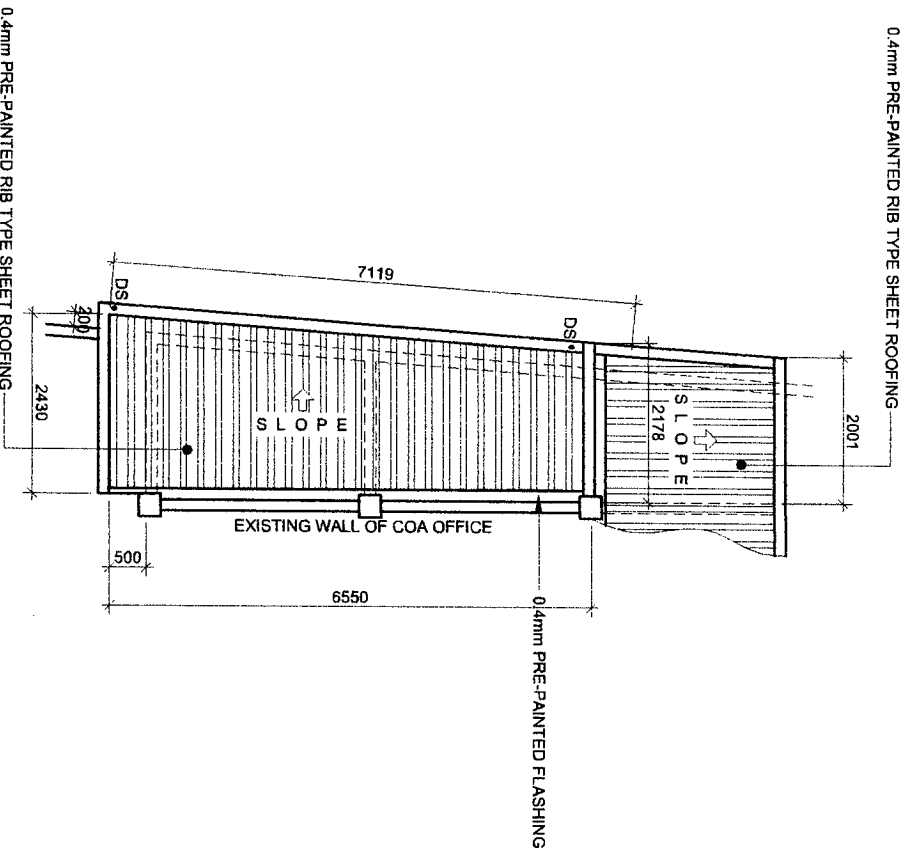
PHILIPPINE  
PORTS  
AUTHORITY  
PMO-MINDORO



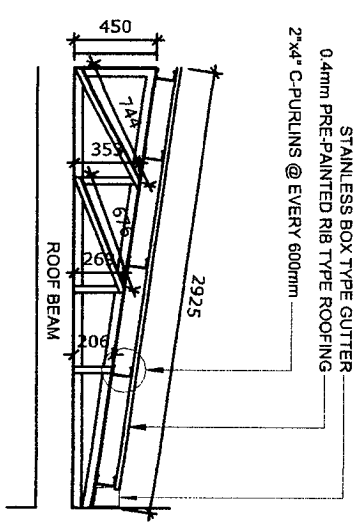
DATE:  
24 JULY, 2020



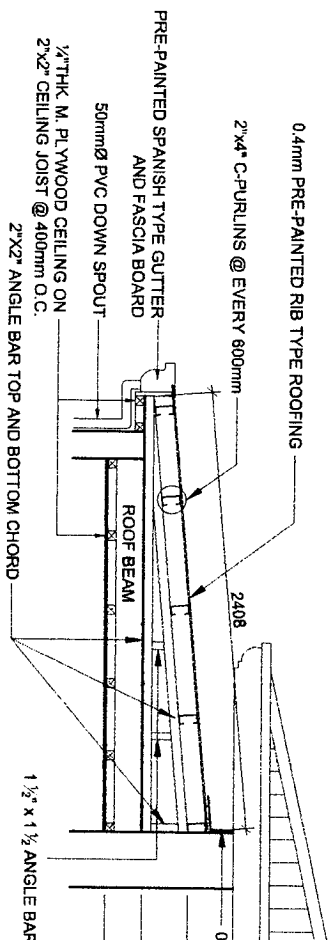
ROOF FRAMING PLAN  
SCALE 1:100 M



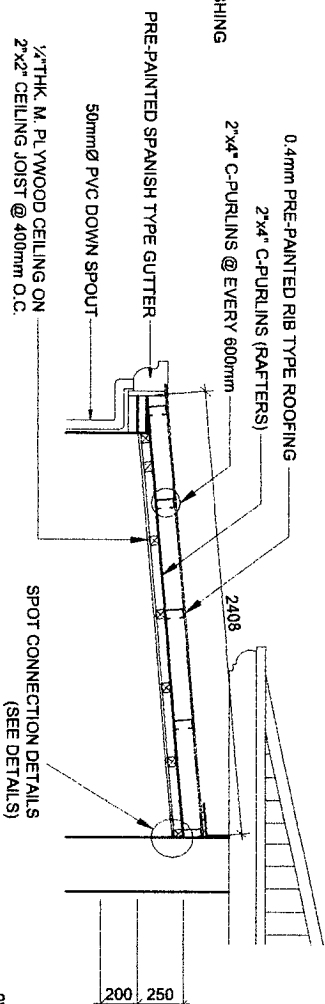
ROOF PLAN  
SCALE 1:100 M



TRUSS 2 DETAILS  
SCALE 1:40 M



TRUSS 1 DETAILS  
SCALE 1:40 M



SPOT CONNECTION DETAIL

PROJECT TITLE:

VARIOUS REPAIR WORKS  
PORT OF CALAPAN, ORIENTAL MINDORO

SHEET CONTENTS:

SCALE:  
AS SHOWN

PREPARED BY:

ROMEL C. MALUBAY  
Draftsman II

SUBMITTED BY:

CONRADO E. CASAPAO JR.  
Assistant Port Engineer

CHECKED / REVIEWED BY:

RONALDO O. MONTAG  
Acting Principal Engineer A

RECOMMENDING APPROVAL BY:

MARGARITO P. DIMAYUG  
Acting Division Manager A, ESD

APPROVED BY:

ELVIS R. MEDALLA  
Port Manager A

AS SHOWN

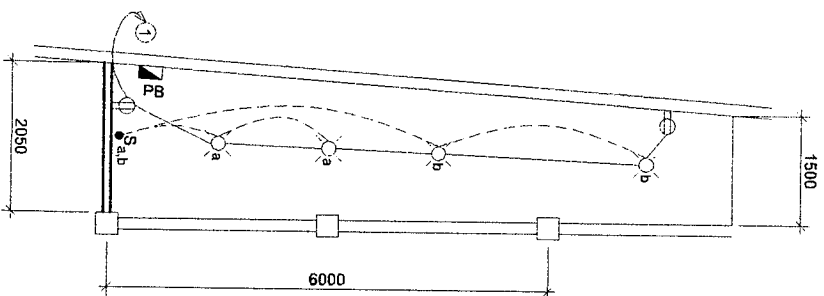
SHEET NO.  
15 of 16

DATE:  
24 JULY, 2020

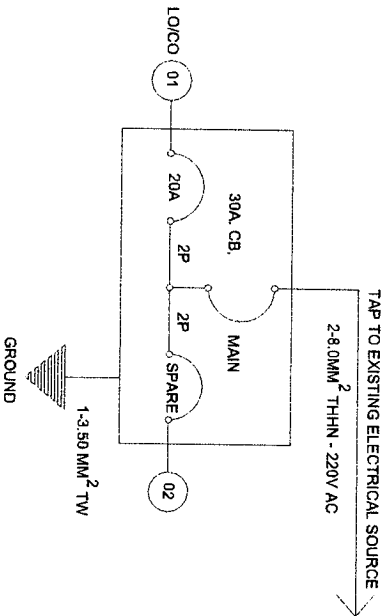


PHILIPPINE  
PORTS  
AUTHORITY  
PMO- MINDORO

- 3 SETS OF 15W LED BULB  
3 SETS OF CEILING RECEPTACLE  
2 SETS OF 2-GANG OUTLET  
1 SET OF 2-GANG SWITCH

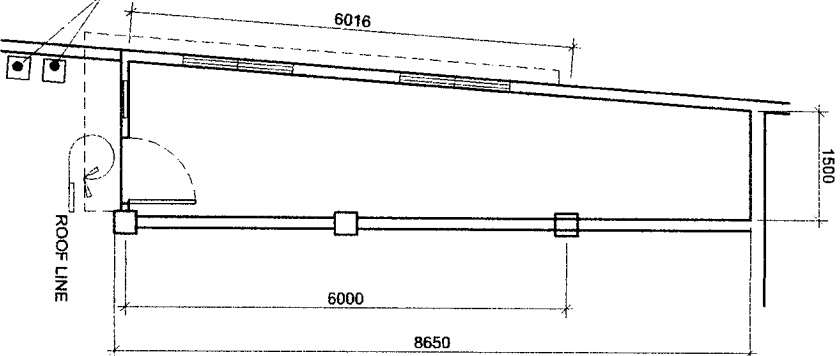


ELECTRICAL PLAN  
SCALE 1:100 M

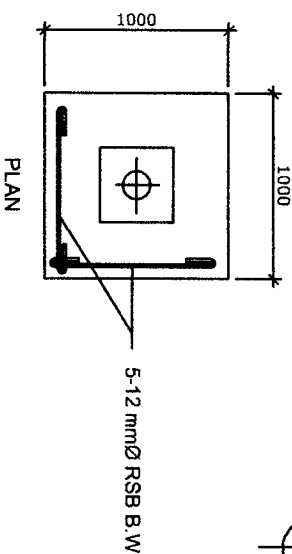
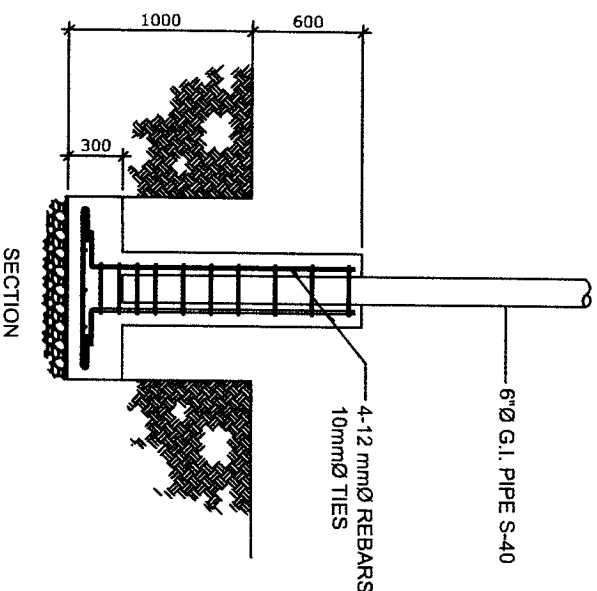


NOTE:  
CONDUIT SIZE:  
NOMINAL SIZE: (OUTSIDE DIAMETER)  
USE: 20mm (3/4") PVC

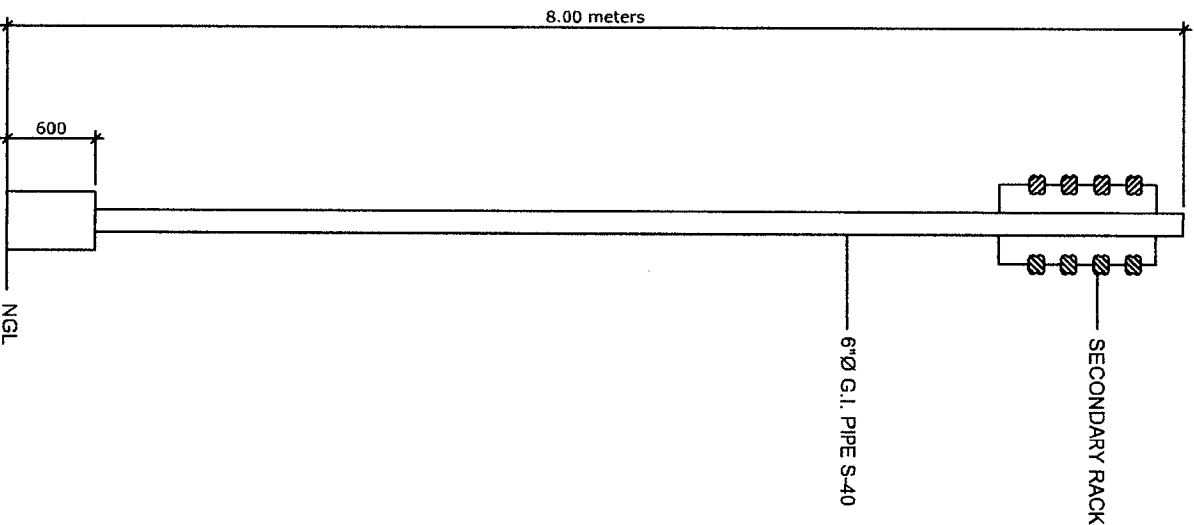
- 1.) PROPOSED LOCATION OF CONCRETE PEDESTAL  
2.) ELECTRICAL POLE TO BE REINSTALLED  
3.) RE-ALIGNING OF ELECTRICAL WIRES  
(3-100mm² THW CU WIRE)



FLOOR PLAN  
SCALE 1:100 M



COLUMN FOOTING DETAIL  
SCALE 1:25 M



STEEL POST DETAIL  
SCALE 1:50 M

PROJECT TITLE:

VARIOUS REPAIR WORKS  
PORT OF CALAPAN, ORIENTAL MINDORO

SHEET CONTENTS:

AS SHOWN

SCALE:

AS SHOWN

PREPARED BY:

RONIEL C. MALUBAY  
Draftsman II

SUBMITTED BY:

CONRADO E. CASAPAO JR.  
Assistant Port Engineer

CHECKED / REVIEWED BY:

RONALD O. MATBAG  
Acting Principal Engineer A

RECOMMENDING APPROVAL BY:

MARGARITO P. DIMAILIG  
Acting Division Manager A, ESD

APPROVED BY:

ELVIS R. MEDALLA  
Port Manager A



SHEET NO.

15 of 16

DATE:

24 JULY, 2020