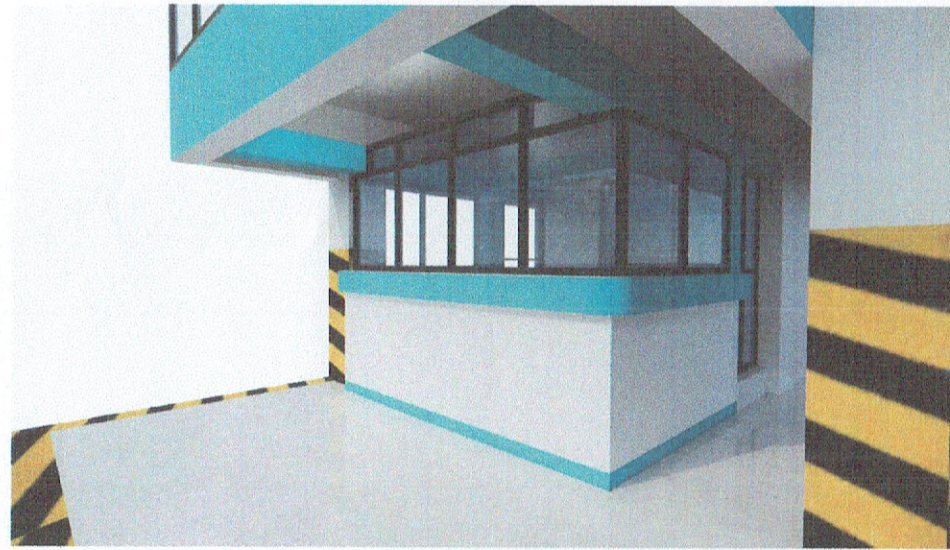
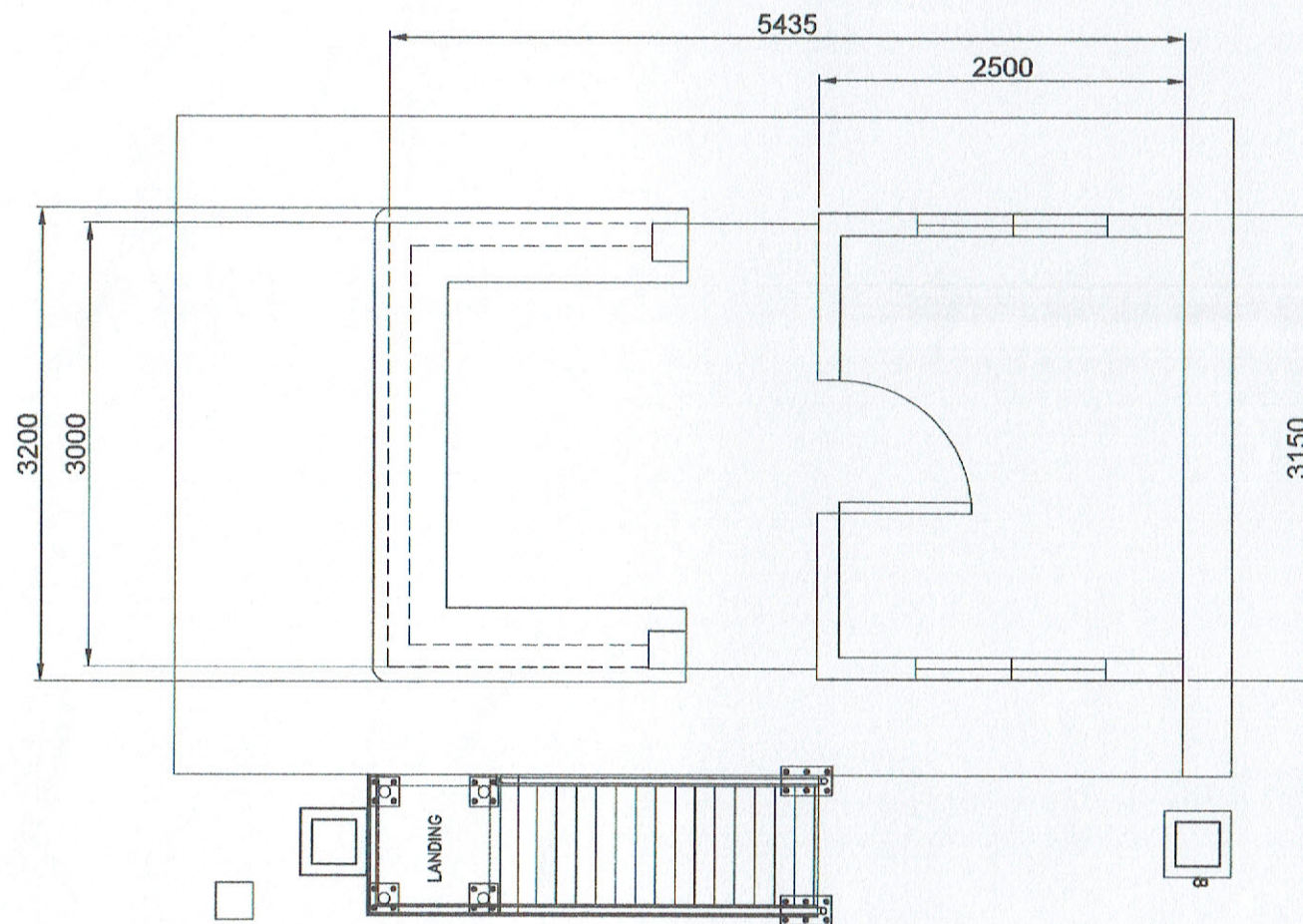


	PROJECT TITLE	PREPARED BY:	CHECKED BY:	REVIEWED BY:	RECOMMENDING APPROVAL:	APPROVED BY:	SHEET CONTENT:	DATE:
	CONVERSION OF THE PPD MAIN GATE SUBSTATION OFFICE GROUND FLOOR COUNTER AREA INTO AN ENCLOSED OFFICE LOCATION PORT OF GENERAL SANTOS, MAKAR WHARF, GENERAL SANTOS CITY	JOECARLO SORIANO ENGINEERING ASSISTANT A	RYNA L. BADAJOS SENIOR ENGINEER A	MARIA VIVIE M. TANCO PRINCIPAL ENGINEER A	JAMESON L. LEE EED MANAGER	ATTY. CESAR M. BATAYA PORT MANAGER	1. LOCATION PLAN	1/3

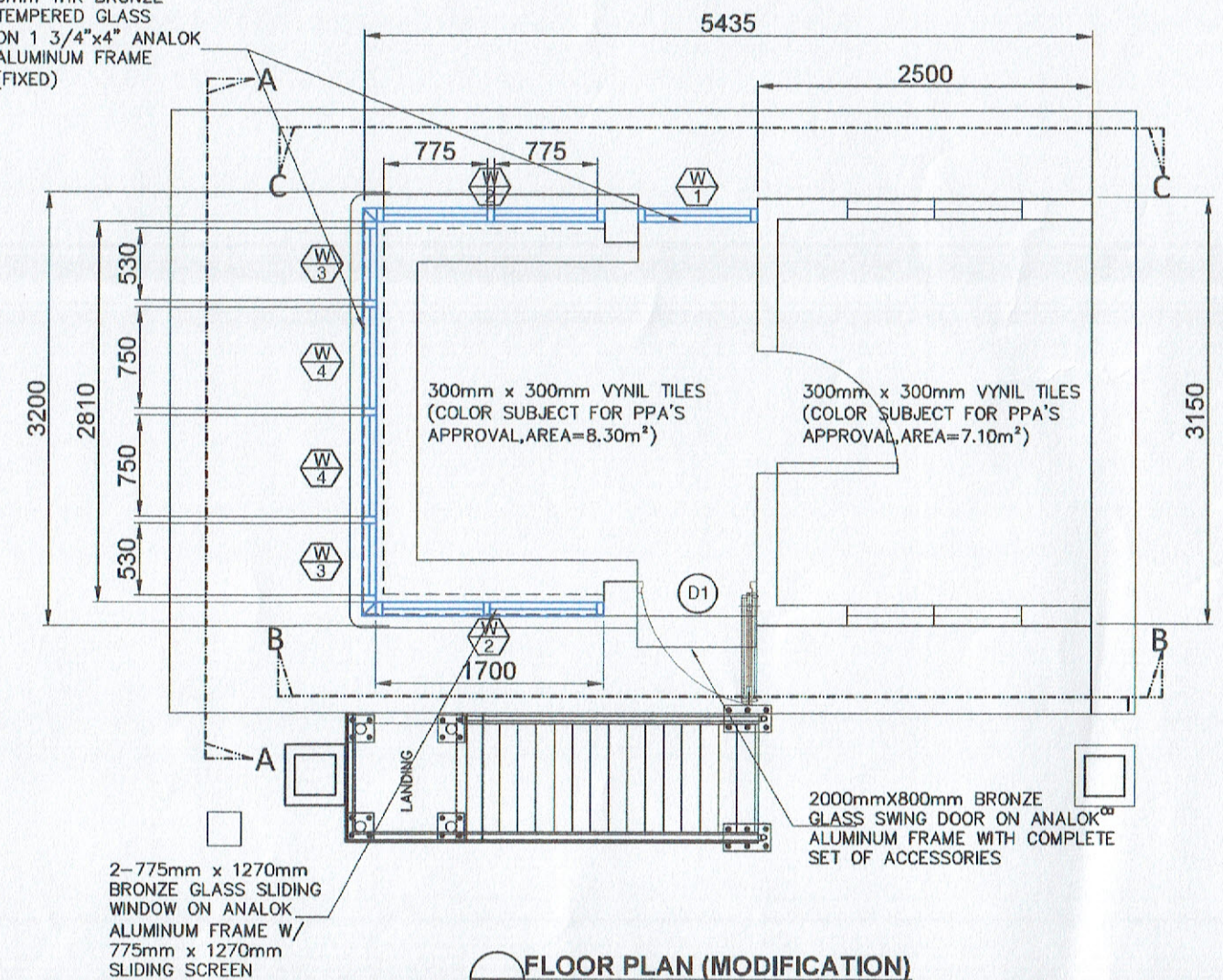


PERSPECTIVE

6mm THK BRONZE
TEMPERED GLASS
ON 1 3/4"x4" ANALOK
ALUMINUM FRAME
(FIXED)

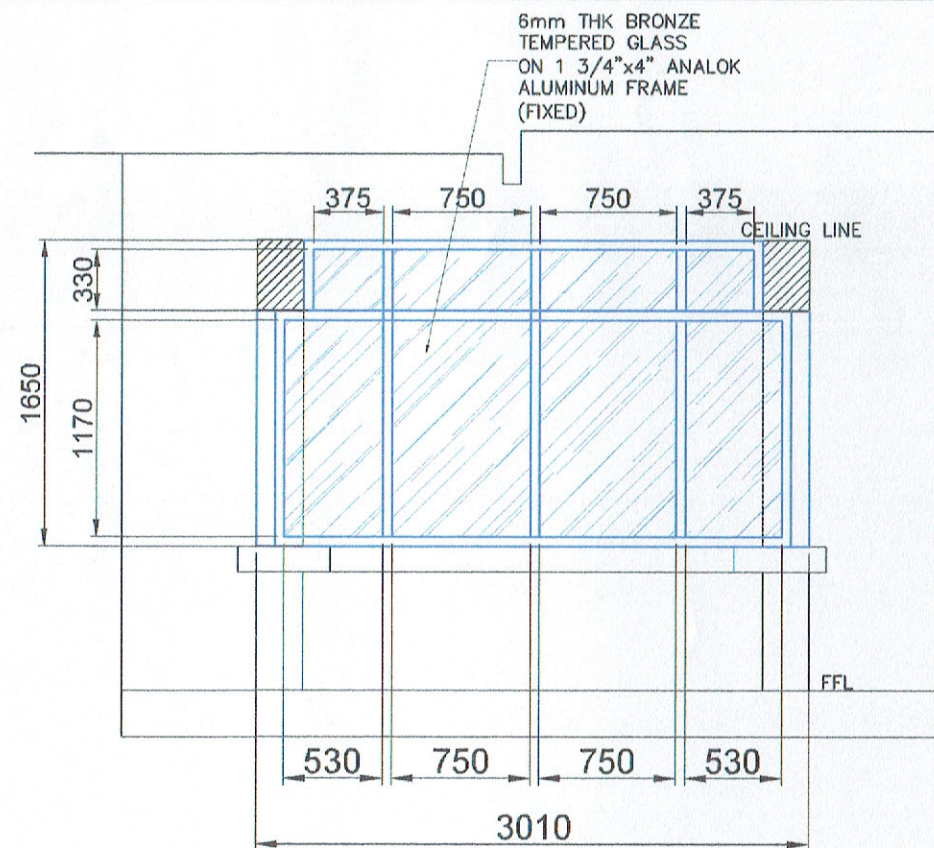


FLOOR PLAN (EXISTING)
SCALE 1:50

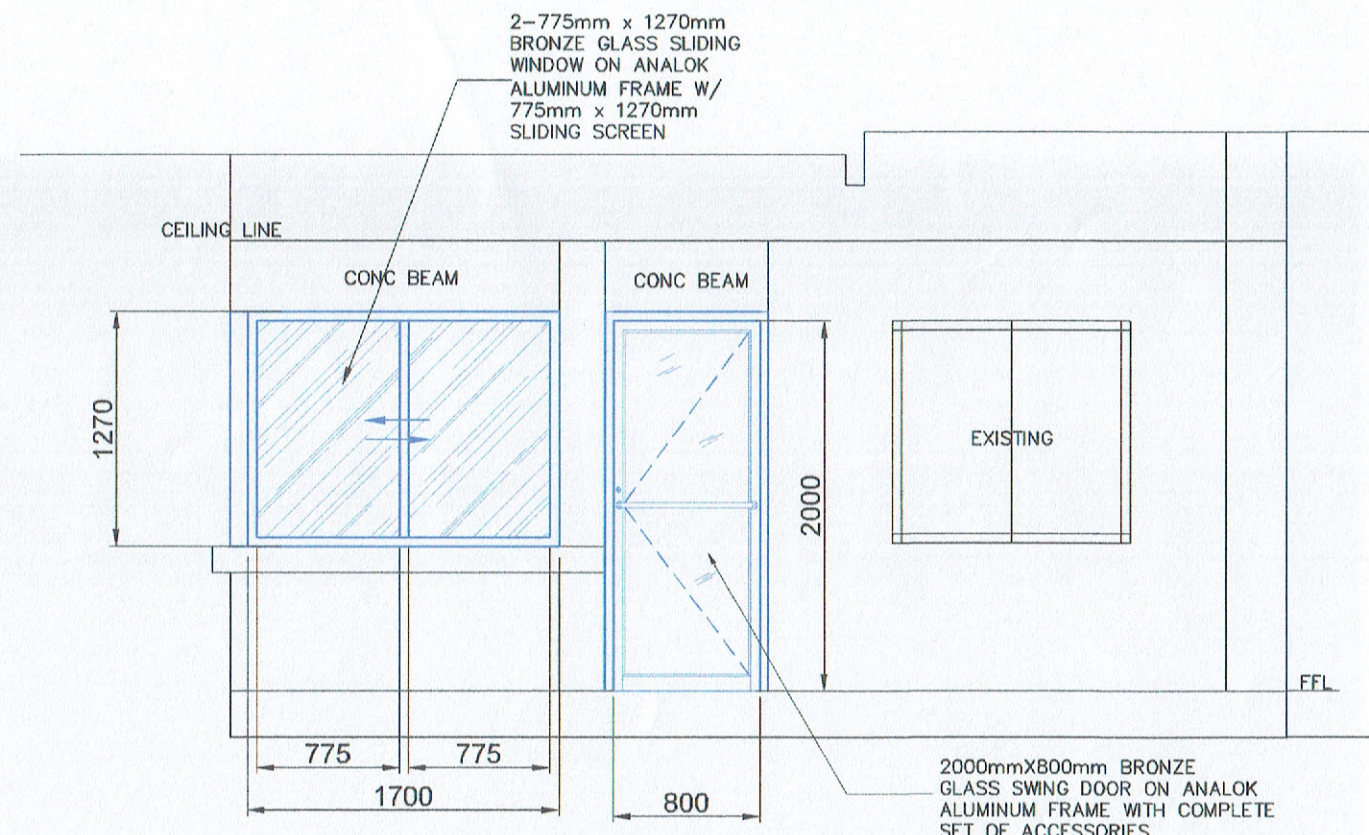


FLOOR PLAN (MODIFICATION)
SCALE 1:50

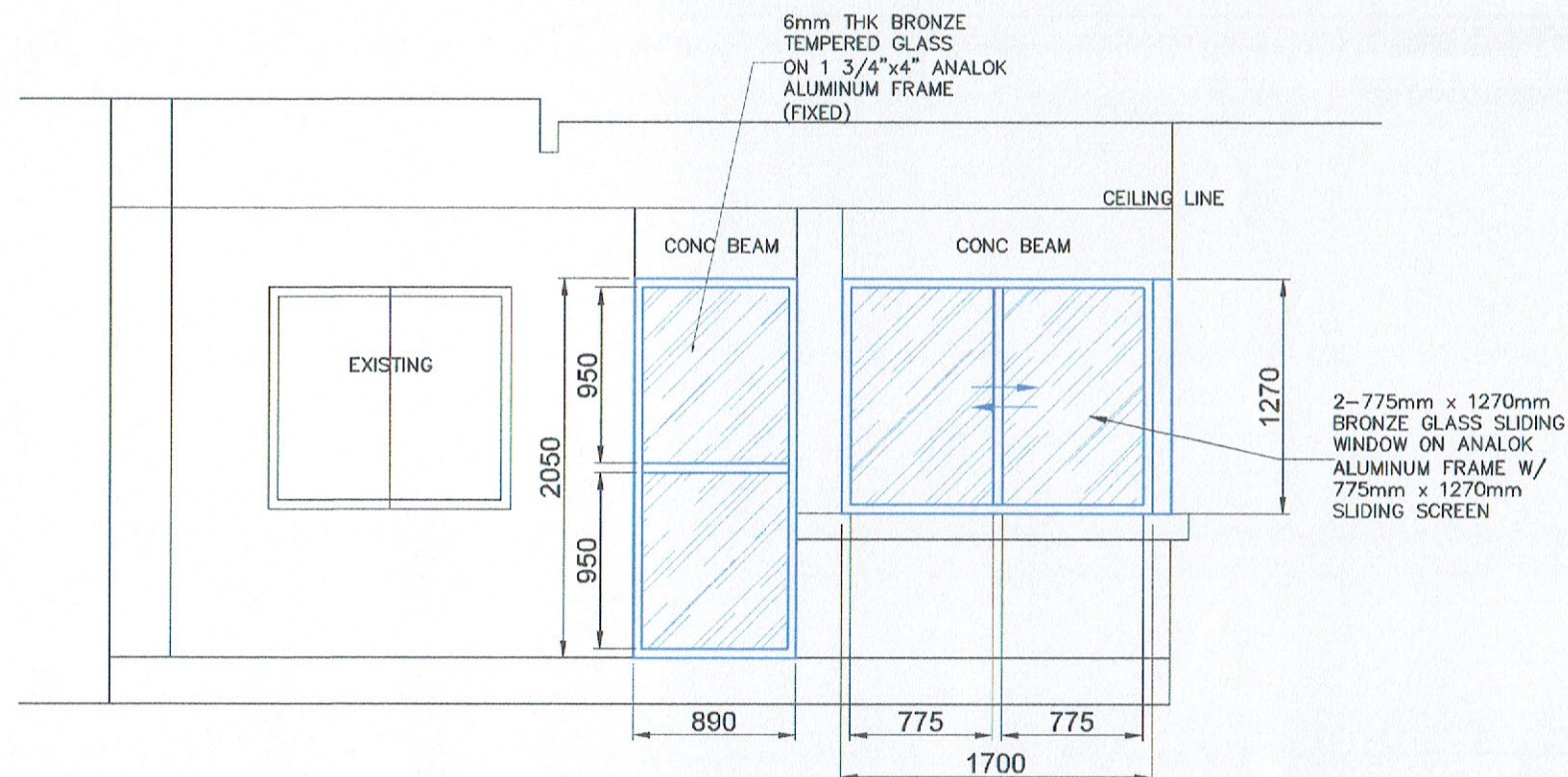
	PROJECT TITLE	PREPARED BY:	CHECKED BY:	REVIEWED BY:	RECOMMENDING APPROVAL:	APPROVED BY:	SHEET CONTENT:	DATE:
	CONVERSION OF THE PPD MAIN GATE SUBSTATION OFFICE GROUND FLOOR COUNTER AREA INTO AN ENCLOSED OFFICE LOCATION PORT OF GENERAL SANTOS, MAKAR WHARF, GENERAL SANTOS CITY	JOE CARLO SORIANO ENGINEERING ASSISTANT A	RYNAL L. BADAJOS SENIOR ENGINEER A	MARIA VIVIEN M. TANGO PRINCIPAL ENGINEER A	JAMESON L. LEE ESD MANAGER	ATTY. CESAR M. DATAYA PORT MANAGER	1. FLOOR PLAN 2. PERSPECTIVE	2/3



ELEVATION 'A-A'
SCALE 1:40



ELEVATION 'B-B'
SCALE 1:40



ELEVATION 'C-C'
SCALE 1:40

DOOR AND WINDOW SCHEDULE				
MARK	W	H	QUANTITY	DESCRIPTION
W1	890	2050mm	1	6mm THK BRONZE TEMPERED GLASS ON 1 3/4"x4" ANALOK ALUMINUM FRAME (FIXED)
W2	1700	1270mm	2	2-775mm x 1270mm BRONZE GLASS SLIDING WINDOW ON ANALOK ALUMINUM FRAME W/ 775mm x 1270mm SLIDING SCREEN
W3	530	1170mm	2	6mm THK BRONZE TEMPERED GLASS ON 1 3/4"x4" ANALOK ALUMINUM FRAME (FIXED)
W3	375	330mm	2	6mm THK BRONZE TEMPERED GLASS ON 1 3/4"x4" ANALOK ALUMINUM FRAME (FIXED)
W4	750	1170mm	2	6mm THK BRONZE TEMPERED GLASS ON 1 3/4"x4" ANALOK ALUMINUM FRAME (FIXED)
W4	750	330mm	2	6mm THK BRONZE TEMPERED GLASS ON 1 3/4"x4" ANALOK ALUMINUM FRAME (FIXED)
D1	800	2000mm	1	2000mmX800mm BRONZE GLASS SWING DOOR ON ANALOK ALUMINUM FRAME WITH COMPLETE SET OF ACCESSORIES

	PROJECT TITLE	PREPARED BY:	CHECKED BY:	REVIEWED BY:	RECOMMENDING APPROVAL:	APPROVED BY:	SHEET CONTENT:	DATE:
	CONVERSION OF THE PPD MAIN GATE SUBSTATION OFFICE GROUND FLOOR COUNTER AREA INTO AN ENCLOSED OFFICE LOCATION PORT OF GENERAL SANTOS, MAKAR WHARF, GENERAL SANTOS CITY	JOECARLO I. SORIANO ENGINEERING ASSISTANT A	RYNA L. BADAJOS SENIOR ENGINEER A	MARIA VIVIEN M. TANCO PRINCIPAL ENGINEER A	JAMESON A. LEE ESD MANAGER	ATTY. CESAR M. BATAYA PORT MANAGER	1. ELEVATION 2. DOOR AND WINDOW SCHEDULE	3/3