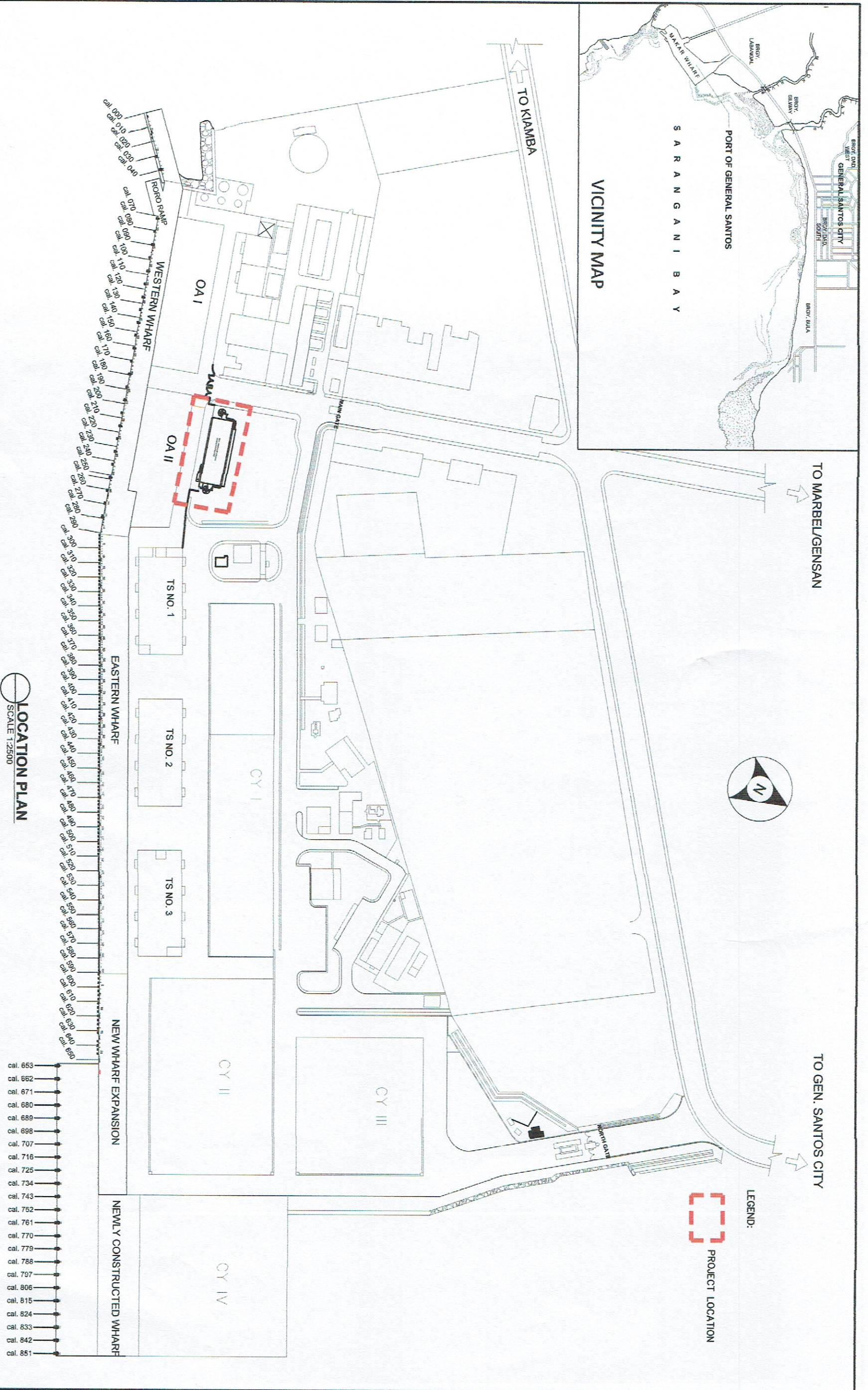


VICINITY MAP



PROJECT TITLE
ROUTINE MAINTENANCE OF PORT PHYSICAL FACILITIES PROJECT 2020:
WATERPROOFING OF POB ROOFDECK

PREPARED BY:
JOSCARLO I. SORIANO
ENGINEERING ASSISTANT A

CHECKED BY:
CHARMAINE DUMIEL MANTOYA
SENIOR ENGINEER A

REVIEWED BY:
MARIA VIVIAN M. TANCO
PRINCIPAL ENGINEER

RECOMMENDING APPROVAL:
JAMESON L. LEE
EED MANAGER

APPROVED BY:
ATTY. CESAR V. DAVAYA
PORT MANAGER

SHEET CONTENT:
1. LOCATION PLAN

DATE:
1/3

NOTE:

1. ROOF DECK AREA=550.00m²
2. LOUNGE AREA ROOF SLAB=98.00m²
3. INSTALLATION OF 50mm x 50mm x 3.5mm^Ø STEEL MATTING
4. APPLICATION OF ASPHALT BASE PRIMER WATERPROOFING COATING -APPLICATION OF ASPHALT MEMBRANE (4mm SLATED) WATERPROOFING -ADDITIONAL 50mm THK CONC. MORTAR FINISH (3000 PSI)
5. PROVIDE WATERPROOFING CEMENT AND PAINTED W/ WATERPROOFING PAINT

LEGEND:



AREA TO PROVIDE WATER PROOFING

ASPHALT BASE PRIMER WATERPROOFING COATING

PARAPET/ WALL

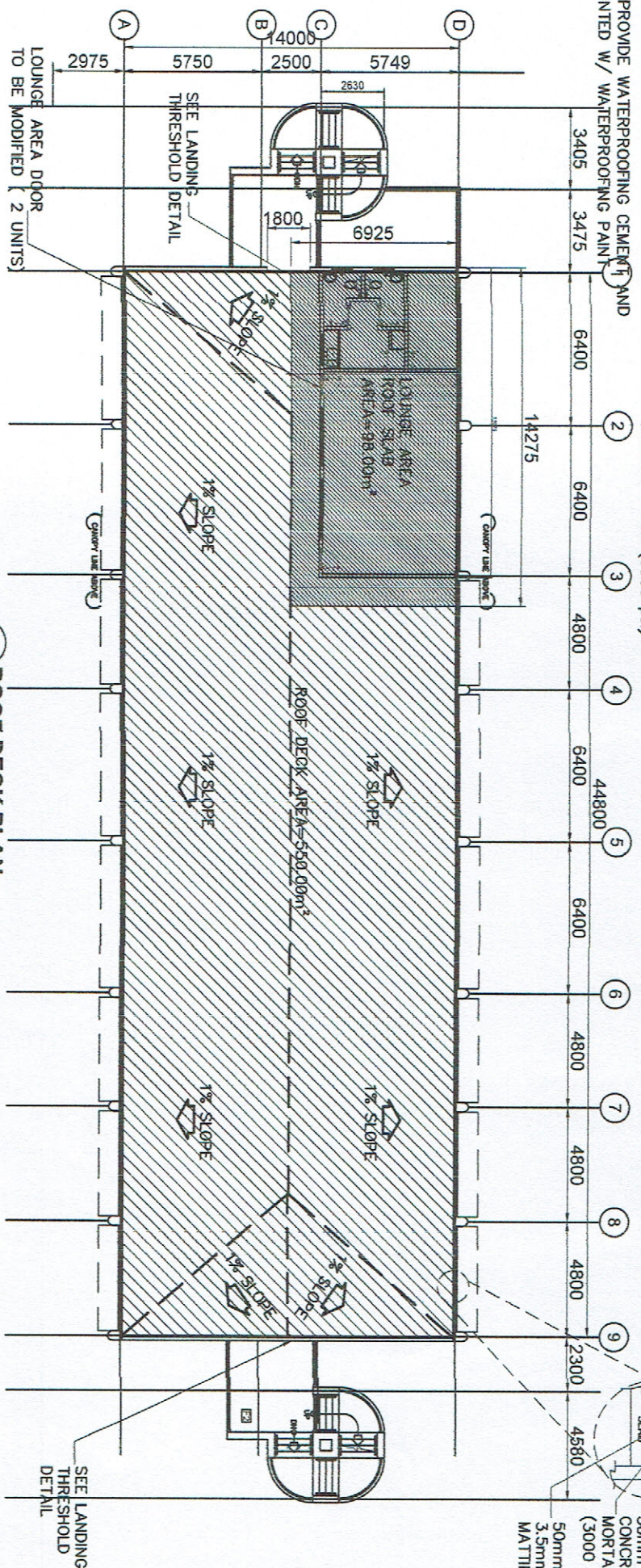
ASPHALT BASE MEMBRANE WATERPROOFING

50mm THK CONCRETE MORTAR FINISH (3000 PSI)

50mm x 50mm x 3.5mm^Ø STEEL MATTING

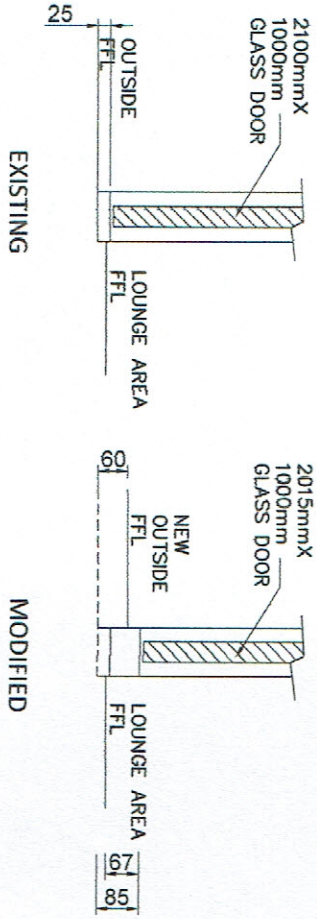
NOTE:

1. APPLY CONCRETE PASTE TO ALL CHIPPED OFF PORTION OF THE ROOFDECK
2. APPLY ASPHALT BASE PRIMER WATERPROOFING COATING BEFORE THE INSTALLATION OF ASPHALT MEMBRANE (4mm SLATED) WATERPROOFING INCLUDING VERTICAL FLASHING.
3. LOUNGE AREA EXTERIOR WALL (A=60.15m²) TO BE RE-PAINTED, USE LATEX PAINT TWO COATS

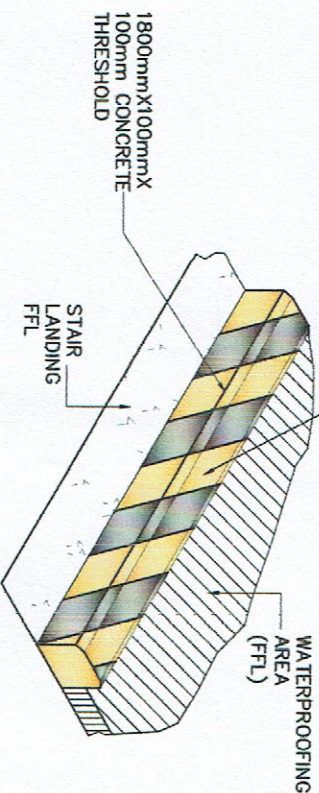


ROOF DECK PLAN
SCALE 1:250

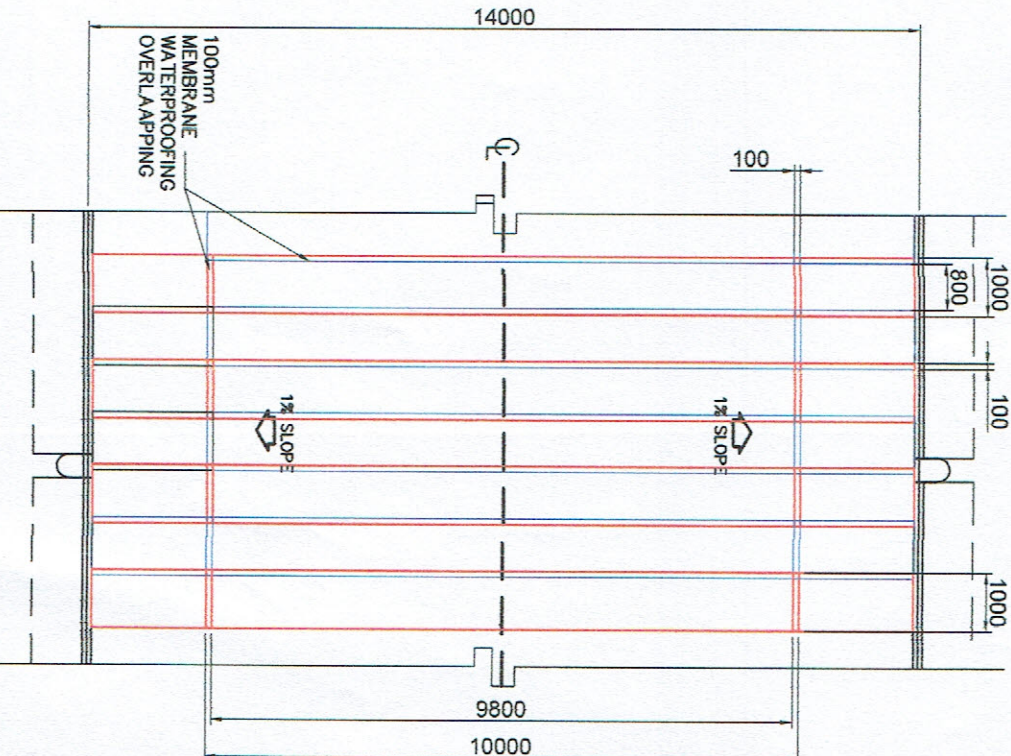
USE PRIMER (WHITE) AND USE REFLECTORIZED TRAFFIC PAINT TWO COATS



LOUNGE AREA DOOR SECTION DETAIL
SCALE 1:15



LANDING THRESHOLD DETAIL
SCALE 1:15



MEMBRANE WATERPROOFING LAYOUT
SCALE 1:125

PROJECT TITLE

ROUTINE MAINTENANCE OF PORT PHYSICAL FACILITIES PROJECT 2020:
WATERPROOFING OF POB ROOFDECK

LOCATION

PORT OF GENERAL SANTOS, MAKAR WHARF,
GENERAL SANTOS CITY

PREPARED BY

JOSCARLO I. SORIANO
ENGINEERING ASSISTANT A

CHECKED BY

CHARMAINE DUQUE, MANTOVA
SENIOR ENGINEER A

REVIEWED BY

MARIA VIVIAN M. TANGO
PRINCIPAL ENGINEER A

RECOMMENDING APPROVAL

JAMESON LITE
ESD MANAGER

APPROVED BY

ATTY. CESAR M. DUYA
PORT MANAGER

SHEET CONTENT:

1. ROOF WATERPROOFING DETAIL

DATE:

2/3

8 FEET



Project: ROUTINE MAINTENANCE OF PORT PHYSICAL FACILITIES PROJECT
2020: (1) WATERPROOFING OF POB ROOFDECK

Location: Makar Wharf, Port of General Santos, General Santos City
Cost: Php (contract amount)
Fund Source/s: Corporate Funds

IMPLEMENTING AGENCY: PHILIPPINES PORTS AUTHORITY - PORT MANAGEMENT OF SOCSARGEN
CONTRACTOR: (NAME OF THE WINNING BIDDER)
BRIEF DESCRIPTION OF PROJECT:

PROJECT DETAILS:

PROJECT DATE		PROJECT STATUS				REMARKS
DURATION	STARTED	TARGET DATE OF COMPLETION	PERCENTAGE OF COMPLETION	AS OF (DATE)	COST INCURRED TO DATE	

FOR PARTICULARS OR COMPLAINTS ABOVE THIS PROJECT, PLEASE CONTACT THE REGIONAL OFFICE OR CLUSTER WHICH HAS AUDIT JURISDICTION ON THIS PROJECT:

COA REGIONAL OFFICE NO./CLUSTER: _____
ADDRESS: _____
CONTACT NO.: _____ OR TEXT COA CITIZEN'S DESK AT 0915-533-1975.

NOTE: TARPULIN WHITE 8 FEET BY 8 FEET. RESOLUTION: 70 dpi. FONT: HELVETICA.
FONT SIZE: MAIN INFORMATION - 3", SUB-INFORMATION - 1". FONT COLOR: BLACK. (BASE ON COA CIRCULAR NO. 2013-004 DATED JANUARY 30, 2013. "INFORMATION AND PUBLICITY ON PROGRAMS / PROJECTS / ACTIVITIES OF GOVERNMENT AGENCIES".

COA STANDARD BILLBOARD DESIGN
SCALE 1:15



PROJECT TITLE

ROUTINE MAINTENANCE OF PORT PHYSICAL FACILITIES PROJECT 2020:
WATERPROOFING OF POB ROOFDECK

LOCATION

PORT OF GENERAL SANTOS, MAKAR WHARF,
GENERAL SANTOS CITY

PREPARED BY:

JOSE ARBOL I. SORIANO
ENGINEERING ASSISTANT A

CHECKED BY:

CHARMAINE D. LUNA L. MANTOYA
REGIONAL ENGINEER A

REVIEWED BY:

MARIA VIVIAN M. TANCO
PRINCIPAL ENGINEER A

RECOMMENDING APPROVAL:

JAMESON L. LEE
EST. MANAGER

APPROVED BY:

ATTY. CESAR M. DA SILVA
PORT MANAGER

SHEET CONTENT:

1. COA STANDARD BILLBOARD
DESIGN

DATE:

3/3