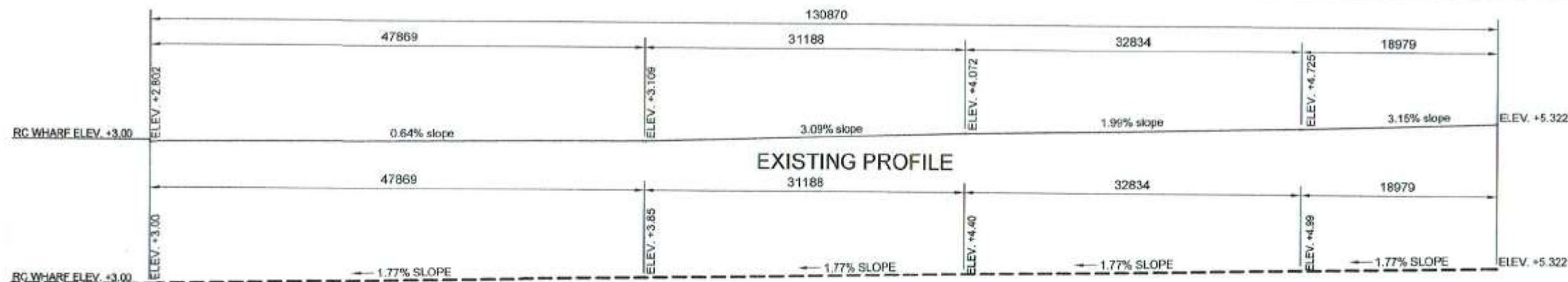



PROJECT LOCATION PLAN
 SCALE 1:3500 METERS

 Republic of the Philippines PHILIPPINE PORTS AUTHORITY PMO - SOCSARGEN	PROJECT TITLE/LOCATION: REBLOCKING OF ACCESS ROAD ALONG MAIN GATE TO WESTERN WHARF, OPEN STORAGE AREAS I & 2, INFRONT & BACK PORTION OF PCG COMPOUND, INFRONT OF PREFAB BUILDING INCLUDING SLOPE CORRECTION, AND INSTALLATION OF SWING GATE THRU HOLCIM COMPOUND, PORT OF GENERAL SANTOS, MAKAR WHARF, GENERAL SANTOS CITY	CAD BY:  VICTOR A. JASPE Engineering Assistant A	CHECKED BY:  CHARMAINE D. JUNE L. MANTOYA Senior Engineer A (J.O.)	REVIEWED BY:  MARIA VIVIEN M. TANGO Acting Principal Engineer	RECOMMENDING APPROVAL:  JAMESON L. LEE ESD Manager	APPROVED BY:  ATTY. CESAR M. DATAYA Acting Port Manager	SHEET CONTENT: 1. Project Location	Date: 5/11/2017 SHEET No.: 1/22
---	--	--	--	---	--	---	--	--

G:\V\16102\reblock project\2017\01-reblocking of access road.dwg

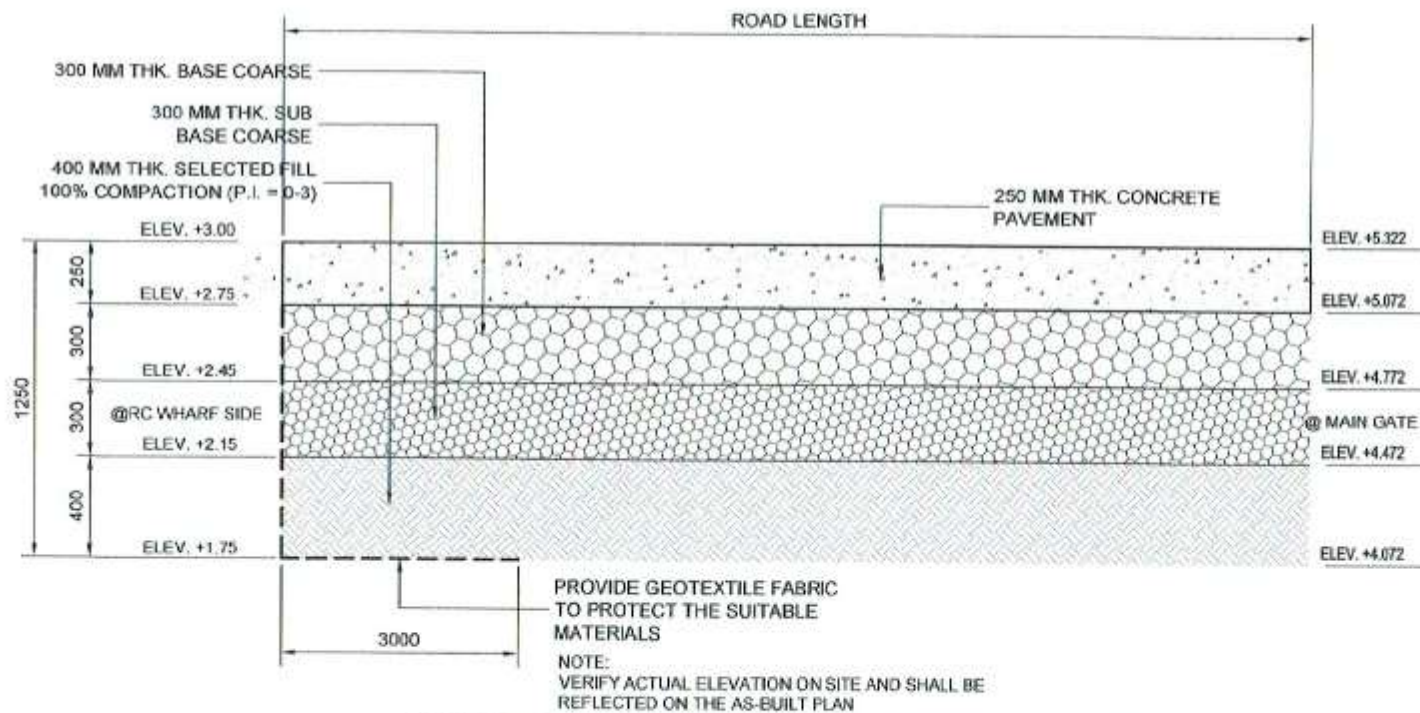


PROPOSED SLOPE CORRECTION

PROFILE PLAN OF PAVEMENT A

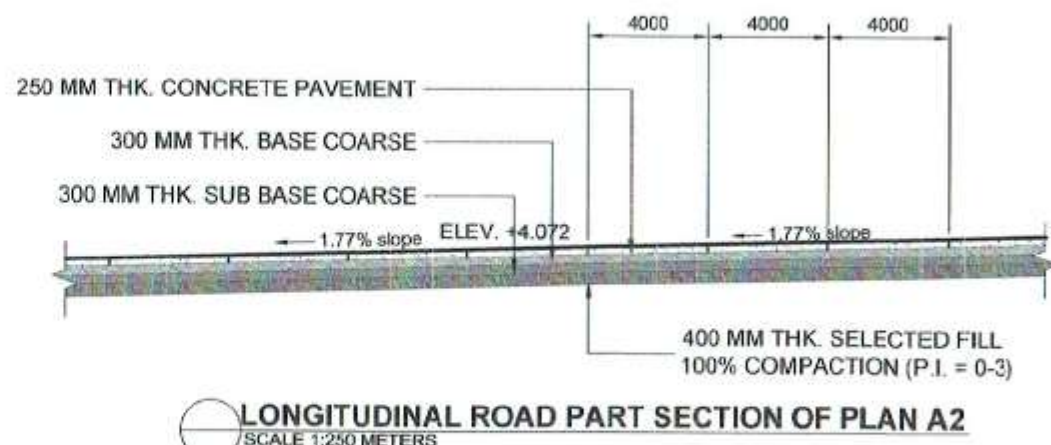
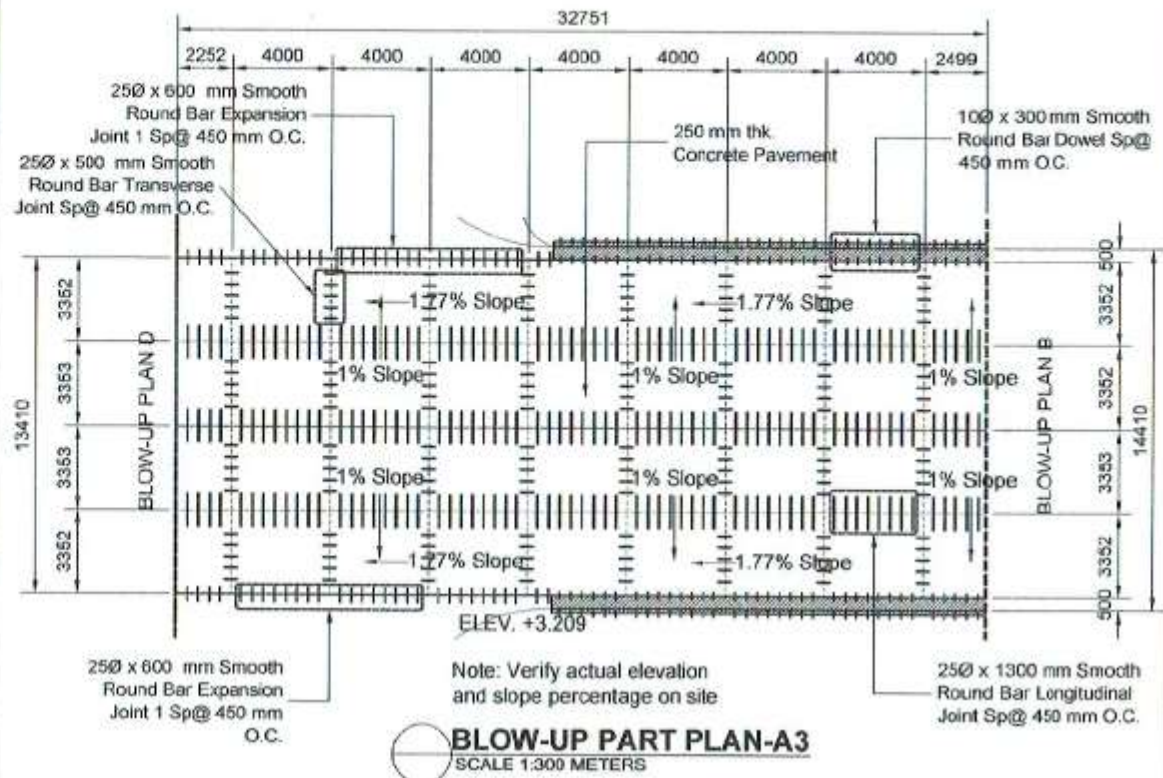
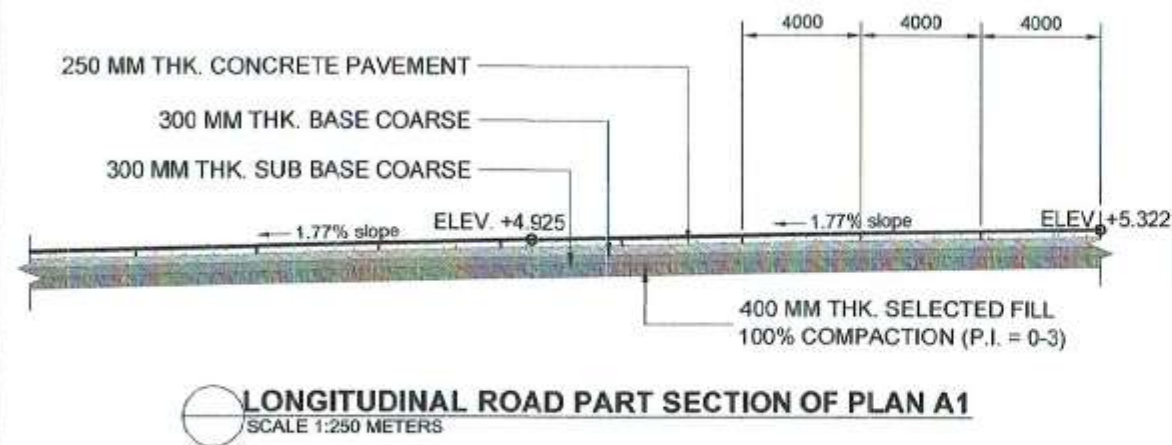
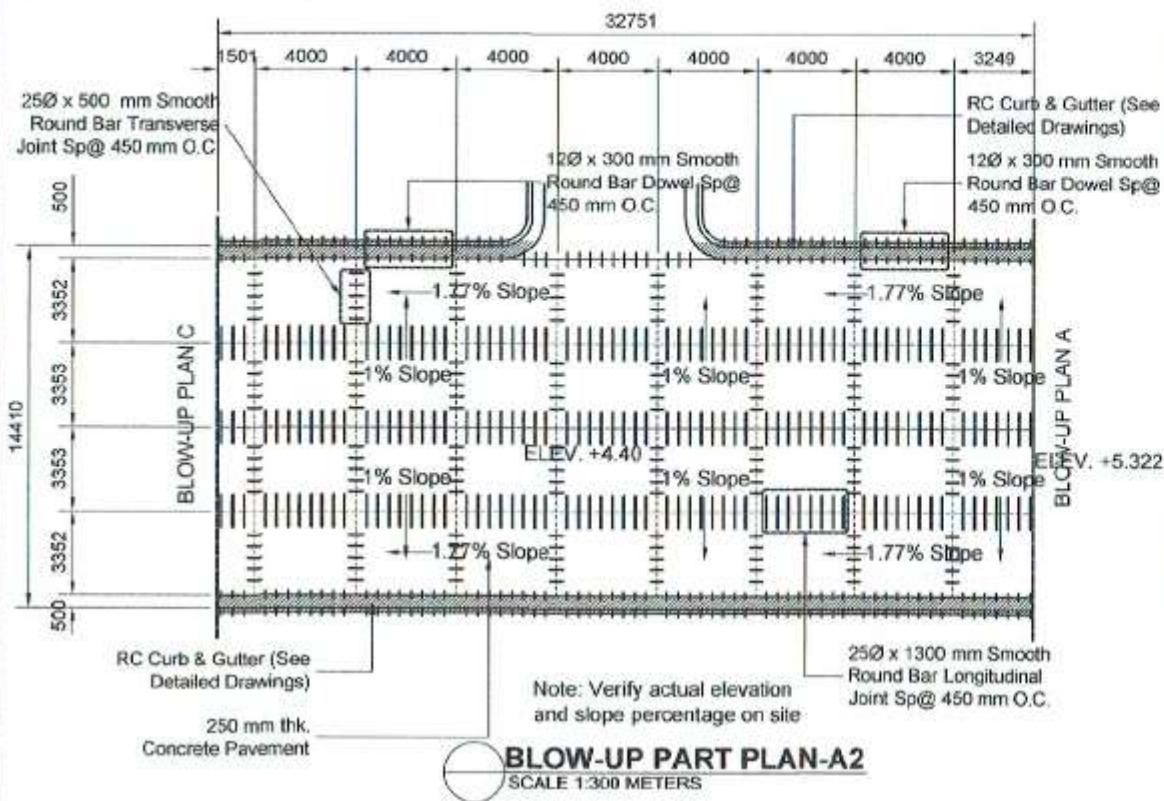
SCALE 1:500 METERS

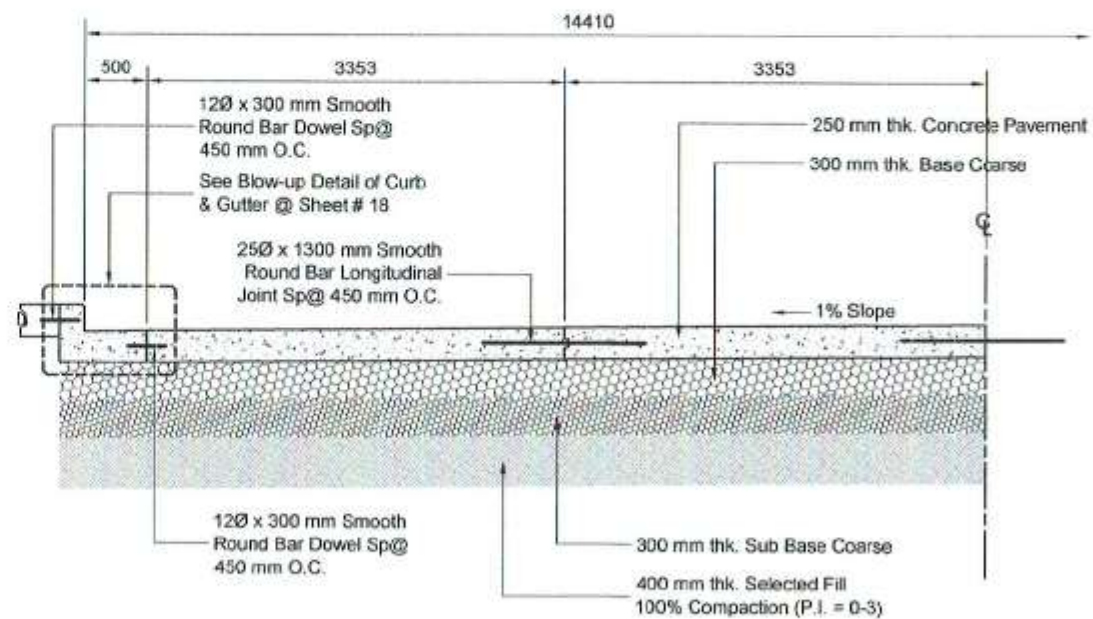
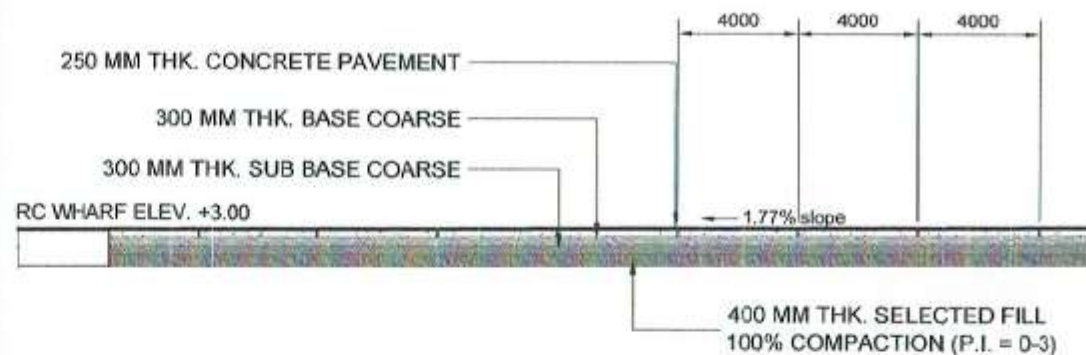
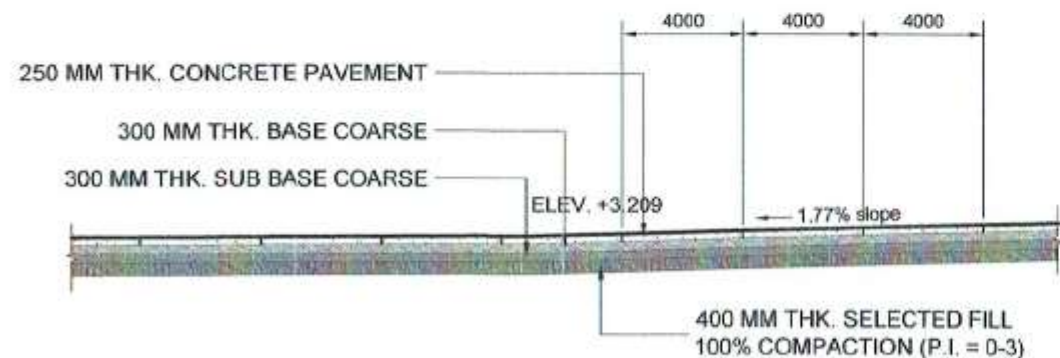
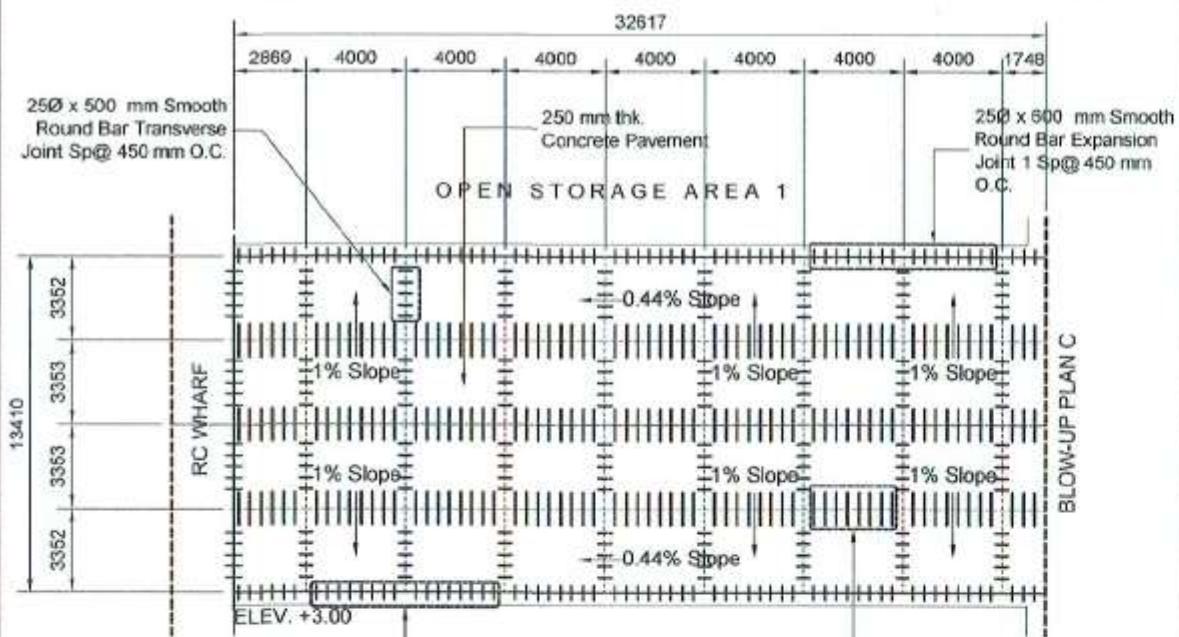
NOTE:
VERIFY ACTUAL ELEVATION ON SITE AND
SHALL BE REFLECTED ON THE AS-BUILT PLAN

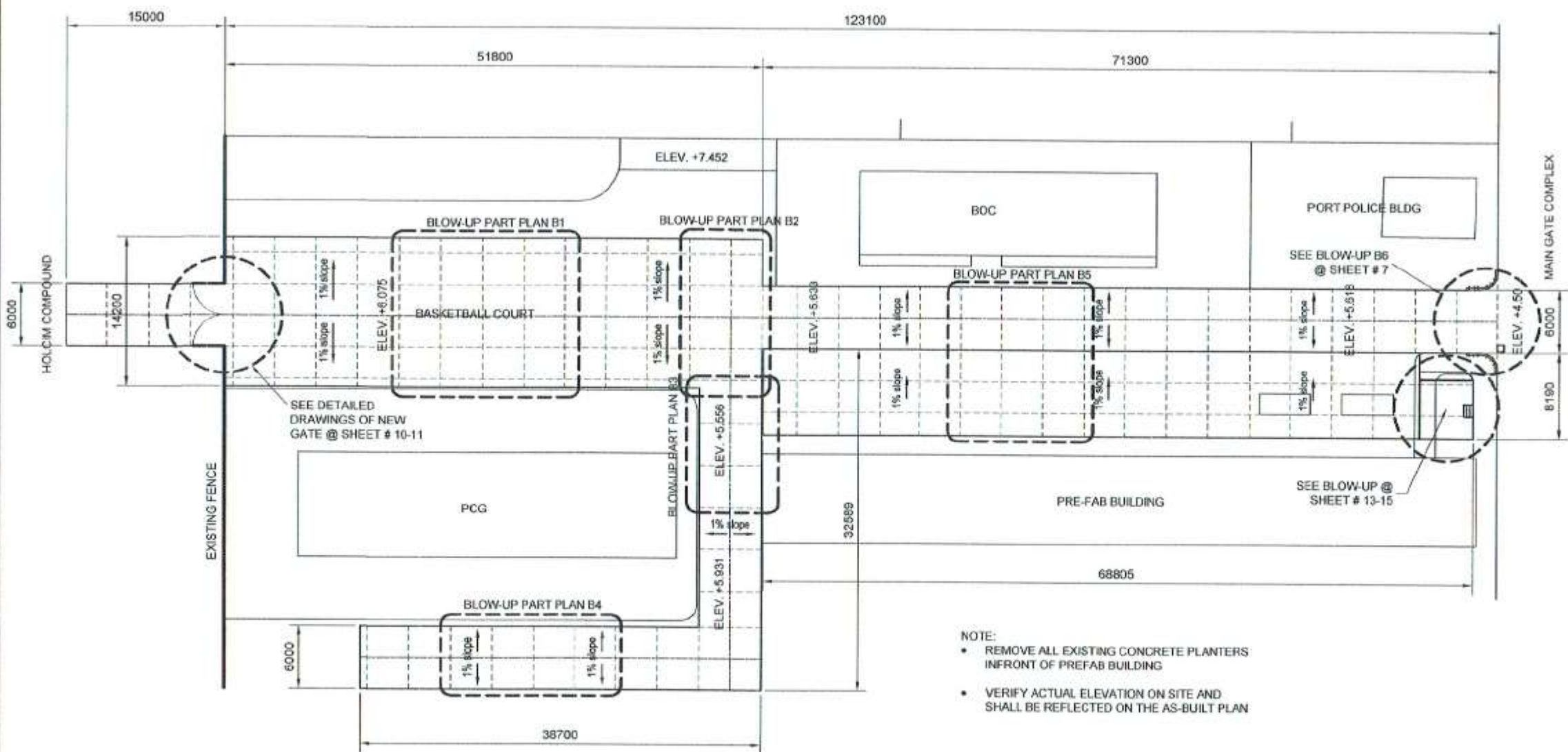


TYP. LONG SECTION OF CONCRETE PAVEMENT A


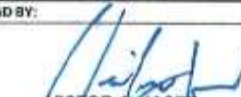

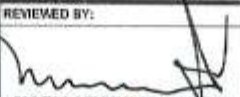

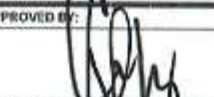
SCALE 1:30 METERS



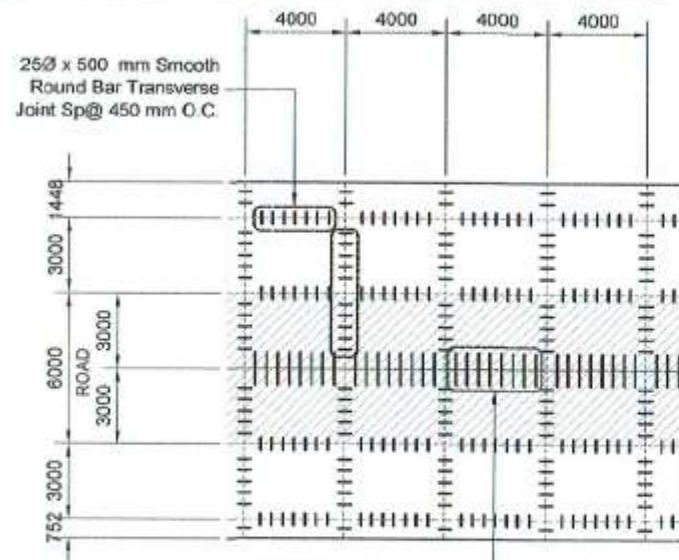




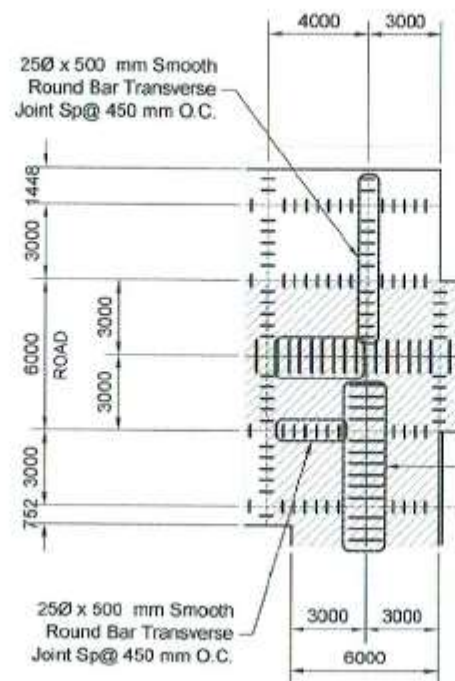
REBLOCKING PLAN OF PAVEMENT B
SCALE 1:500 METERS

 PHILIPPINE PORTS AUTHORITY PMO-SOCSARGEN	PROJECT TITLE/LOCATION: REBLOCKING OF ACCESS ROAD ALONG MAIN GATE TO WESTERN WHARF, OPEN STORAGE AREAS 1 & 2, IN FRONT & BACK PORTION OF PCG COMPOUND, IN FRONT OF PREFAB BUILDING INCLUDING SLOPE CORRECTION, AND INSTALLATION OF SWING GATE THRU HOLCIM COMPOUND, PORT OF GENERAL SANTOS, MAKAR WHARF, GENERAL SANTOS CITY	CAD BY:  VICTOR A. JASPE Engineering Assistant A	CHECKED BY:  CHARMAINE DUNE L. MANTOYA Senior Engineer A (J.O.)	REVIEWED BY:  MARIA VIVIEN M. TANCO Acting Principal Engineer	RECOMMENDING APPROVAL:  JAMESON L. LEE ESD Manager	APPROVED BY:  ATTY. CESAR M. DATAYA Acting Port Manager	SHEET CONTENT: 1. Reblocking Plan of Pavement B	Date: 9/11/2017 SHEET No.: 7/22
---	--	--	---	---	--	---	---	--

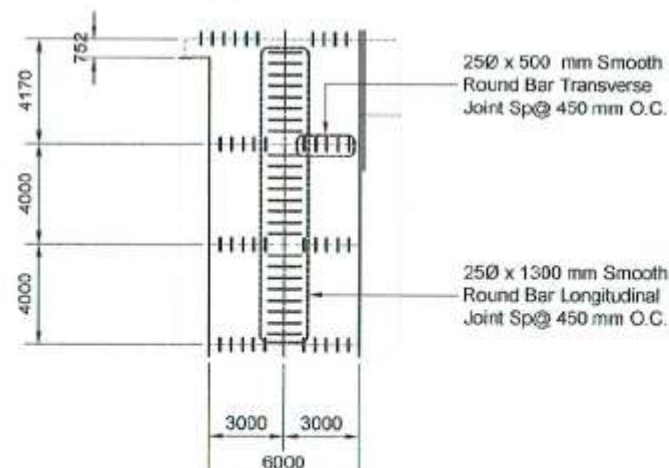
D:\Projects\2017\Reblocking of access road.dwg



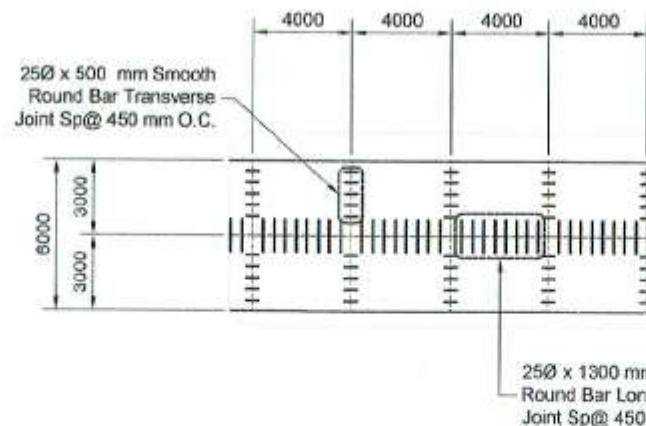
BLOW-UP PART PLAN-B1
SCALE 1:300 METERS



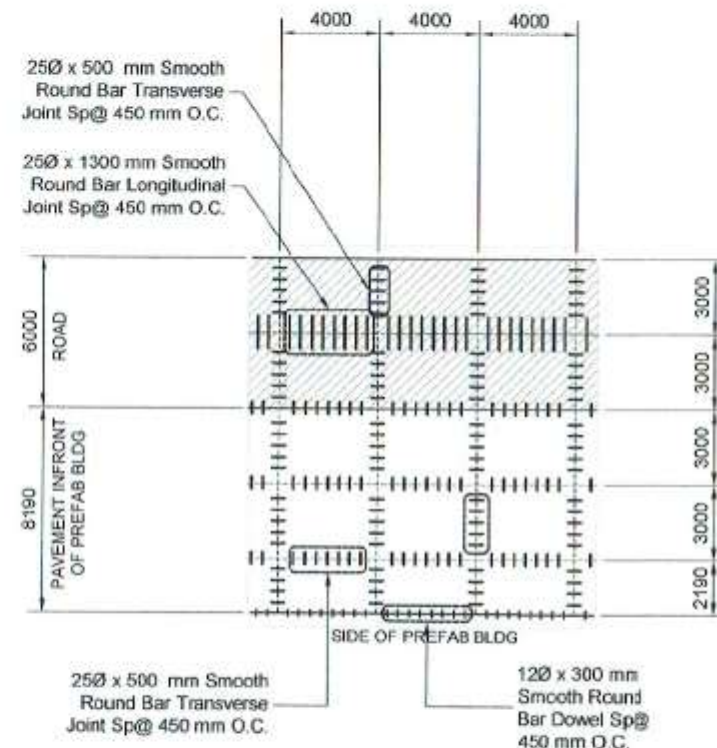
BLOW-UP PART PLAN-B2
SCALE 1:300 METERS



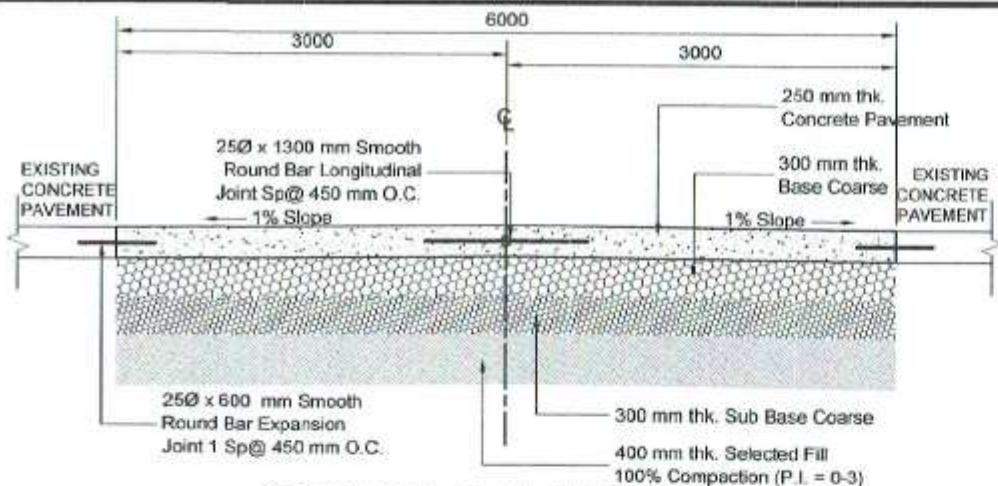
BLOW-UP PART PLAN-B3
SCALE 1:300 METERS



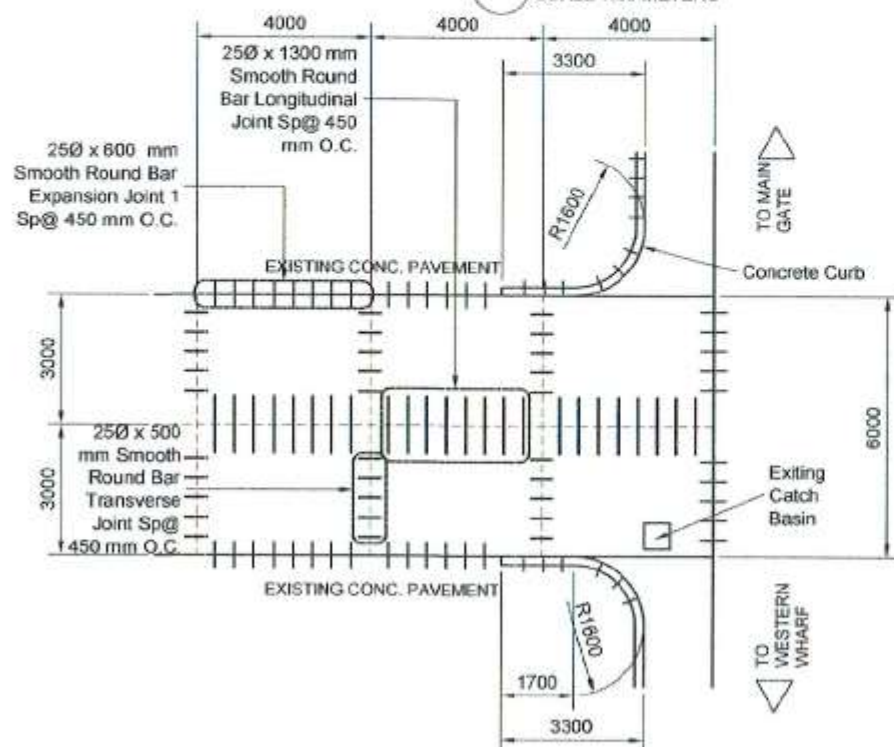
BLOW-UP PART PLAN-B4
SCALE 1:300 METERS



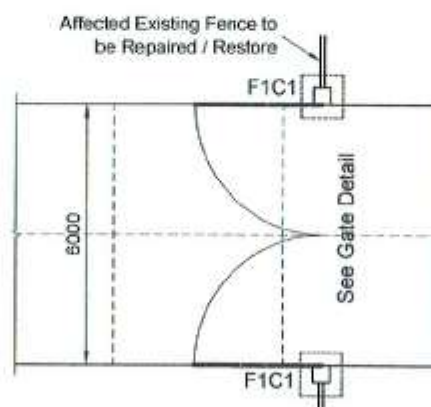
BLOW-UP PART PLAN-B5
SCALE 1:300 METERS



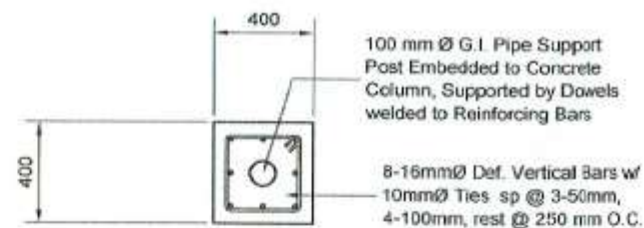
TYPICAL ROAD CROSS SECTION
SCALE 1:60 METERS



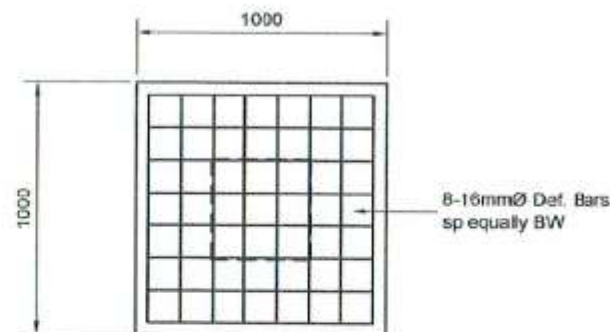
BLOW-UP DETAIL B6
SCALE 1:175 METERS



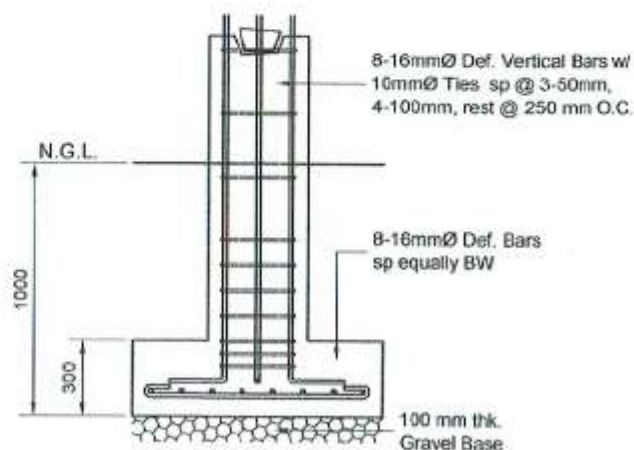
GATE PLAN @ HOLCIM
SCALE 1:175 METERS



COLUMN PLAN

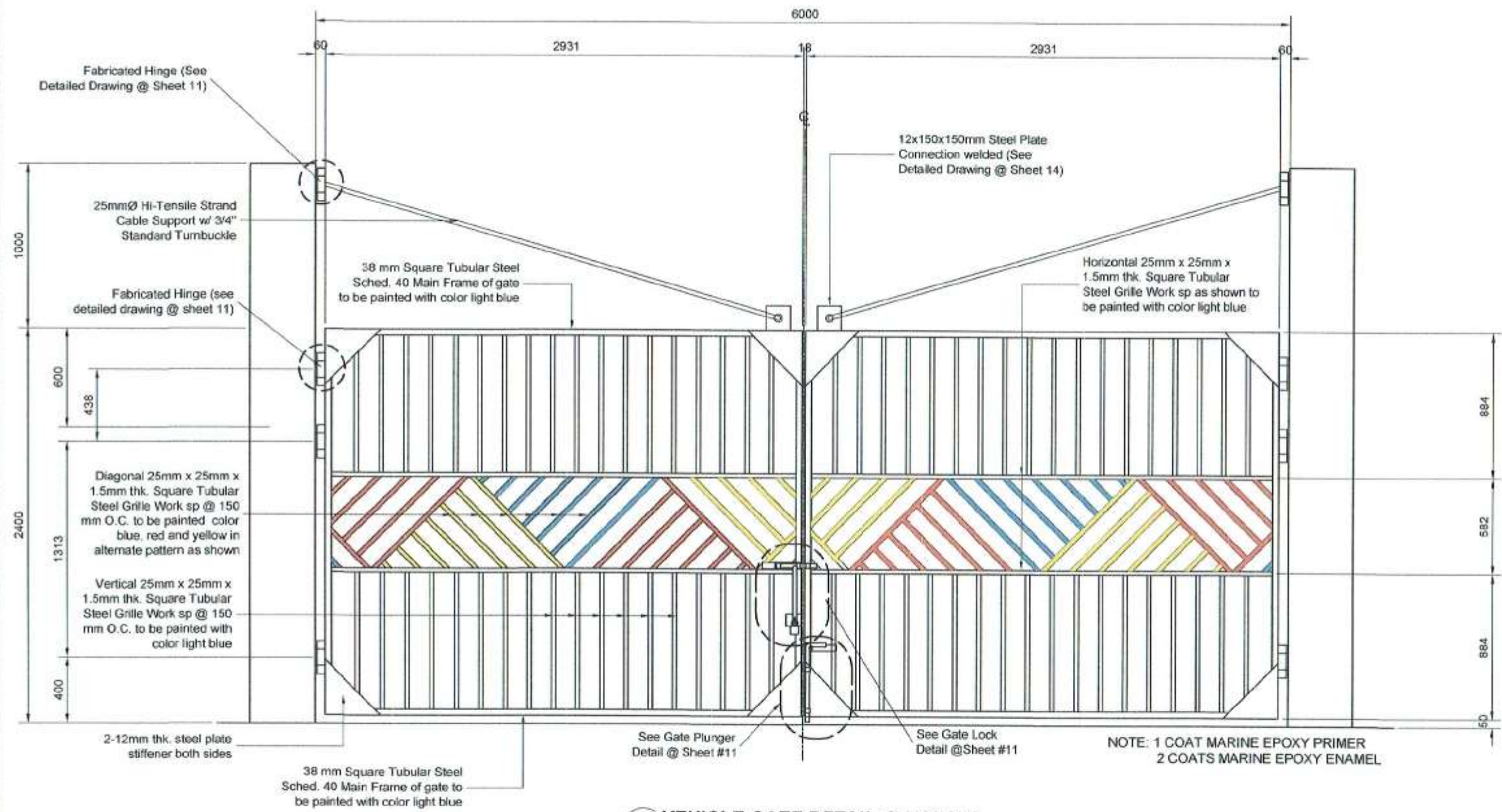


FOOTING PLAN



SECTION

F1C1 COLUMN FOOTING DETAIL
SCALE 1:30 METERS

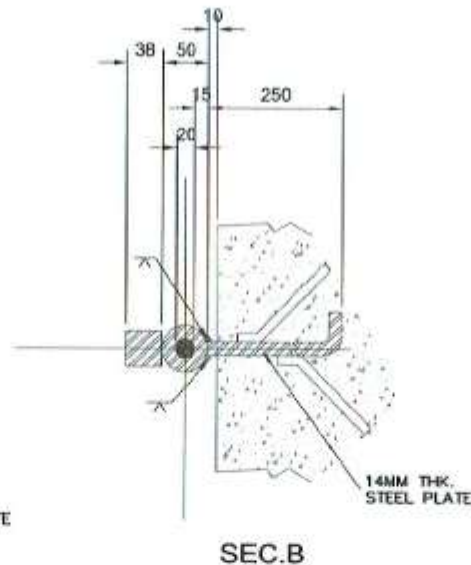
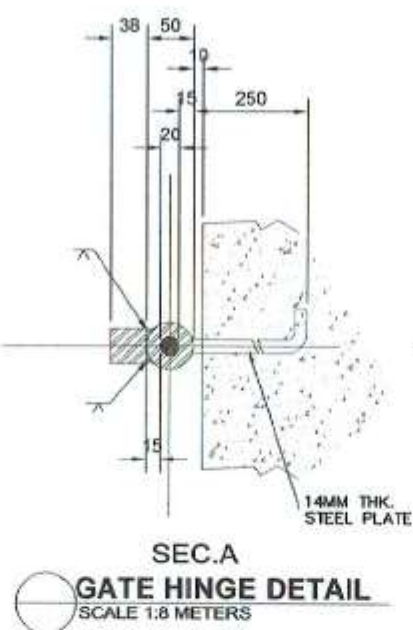
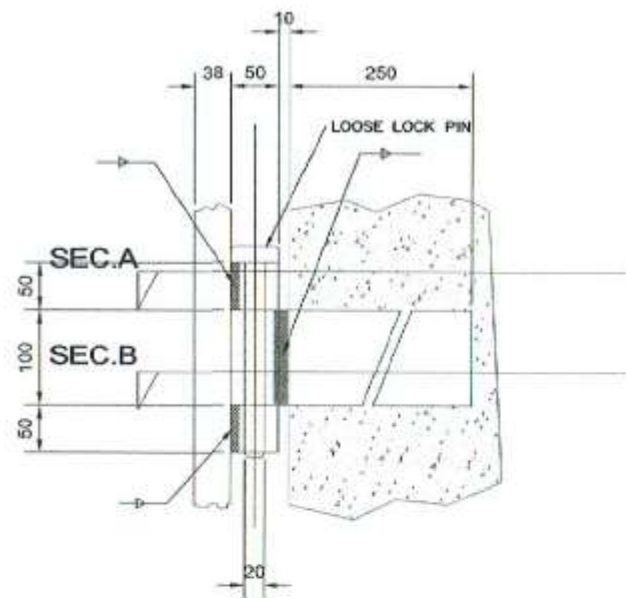



VEHICLE GATE DETAIL @ HOLCIM
 SCALE 1:30 METERS

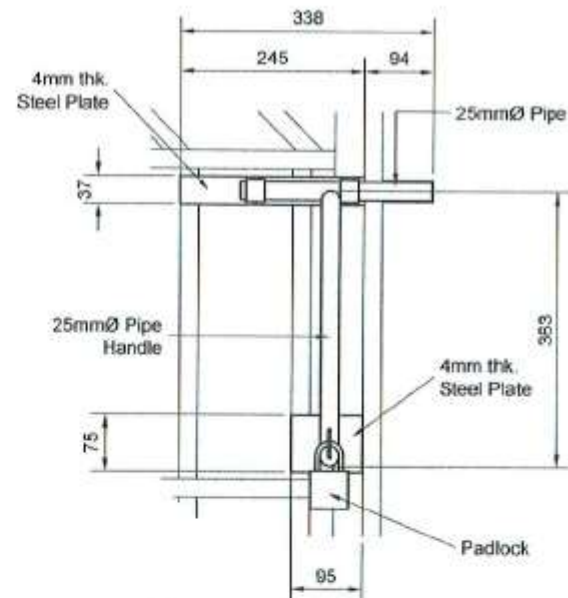
NOTE: 1 COAT MARINE EPOXY PRIMER
2 COATS MARINE EPOXY ENAMEL

 <p>PHILIPPINE PORTS AUTHORITY PMO - SOCSARGEN</p>	PROJECT TITLE/LOCATION:	CAD BY:	CHECKED BY:	REVIEWED BY:	RECOMMENDING APPROVAL:	APPROVED BY:	SHEET CONTENT:	Date: 5/11/2017
	REBLOCKING OF ACCESS ROAD ALONG MAIN GATE TO WESTERN WHARF, OPEN STORAGE AREAS 1 & 2, INFRONT & BACK PORTION OF PCG COMPOUND, INFRONT OF PREFAB BUILDING INCLUDING SLOPE CORRECTION, AND INSTALLATION OF SWING GATE THRU HOLCIM COMPOUND, PORT OF GENERAL SANTOS, MAKAR WHARF, GENERAL SANTOS CITY	 VICTOR A. JASPE Engineering Assistant A	 CHARMAINE D. JUNE L. MANTOYA Senior Engineer A (J.O.)	 MARIA VIVIEN M. Tanco Acting Principal Engineer	 JAMESON L. LEE ESD Manager	 ATTY. CESAR M. DATAYA Acting Port Manager	1. Vehicle Gate Detail	SHEET No.:
								10/22

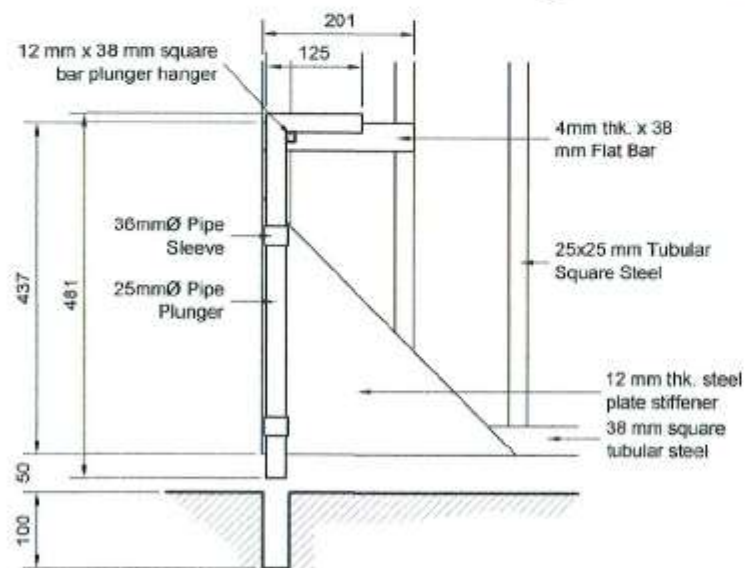
P:\56222\jaspas\projects\2017\10-vehicle gate detail access road.dwg



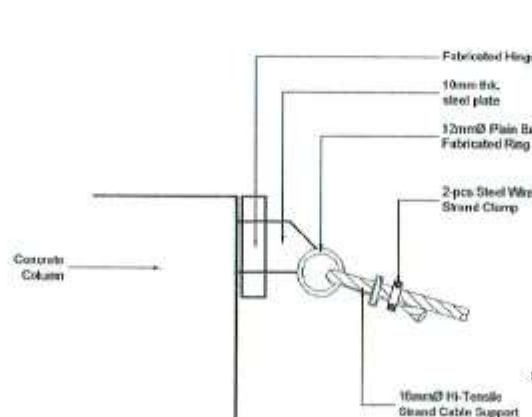
SEC.A
GATE HINGE DETAIL
SCALE 1:8 METERS



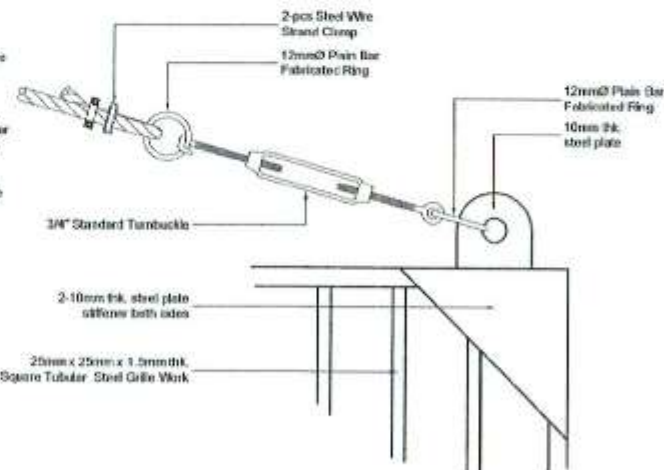
GATE LOCK DETAIL
SCALE 1:10 METERS



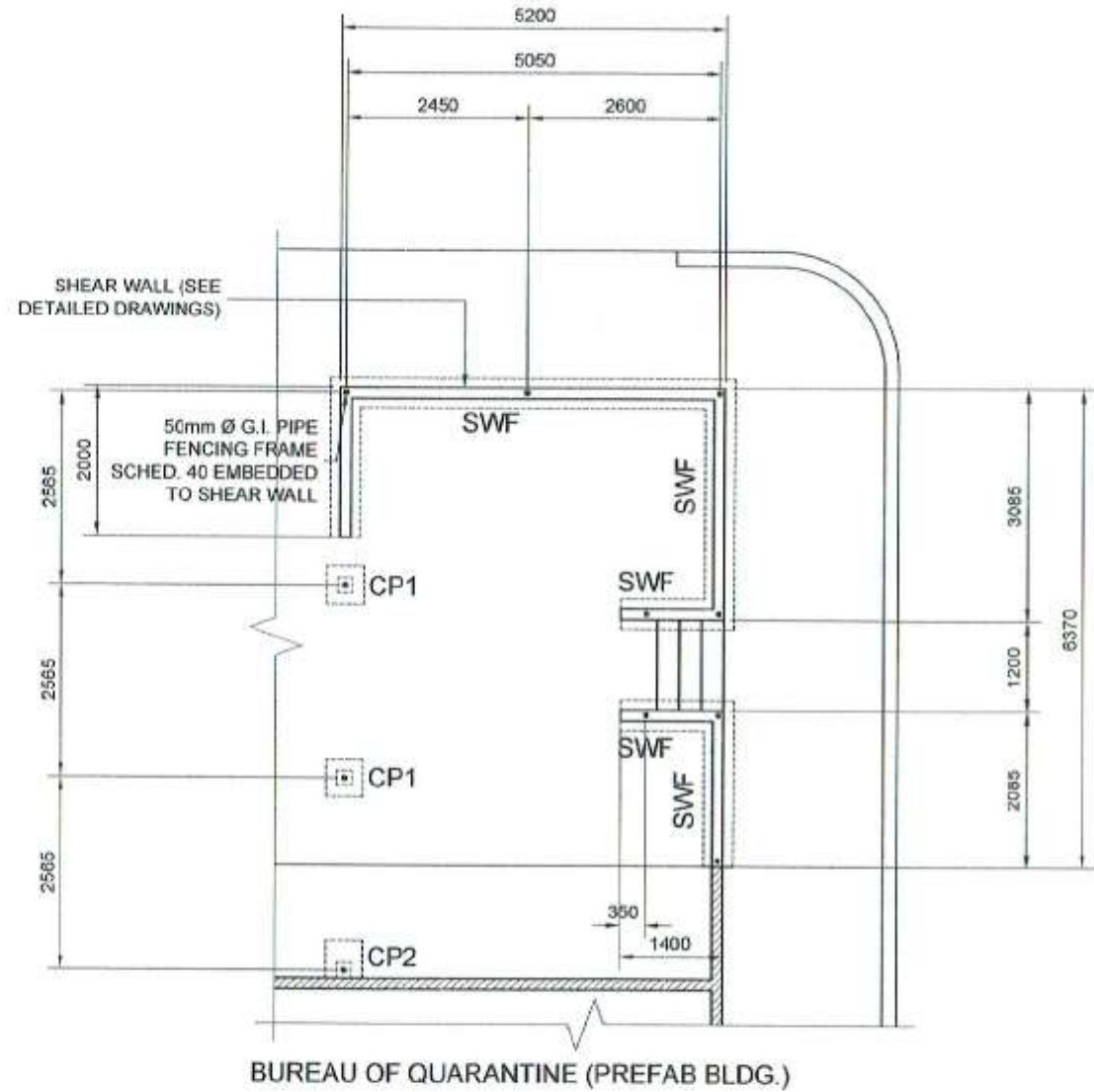
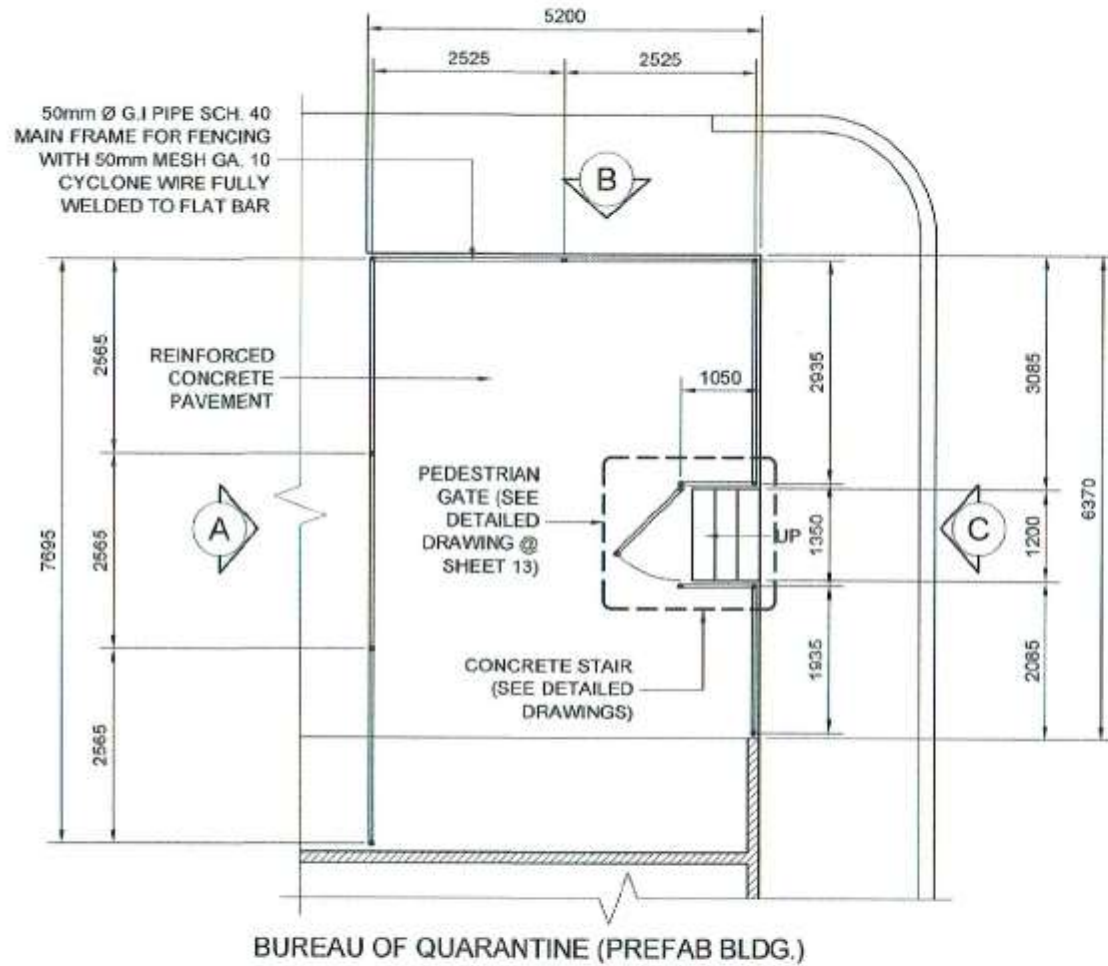
GATE PLUNGER DETAIL
SCALE 1:10 METERS



HTS CONNECTION DETAIL @ COLUMN
SCALE 1:10 METERS

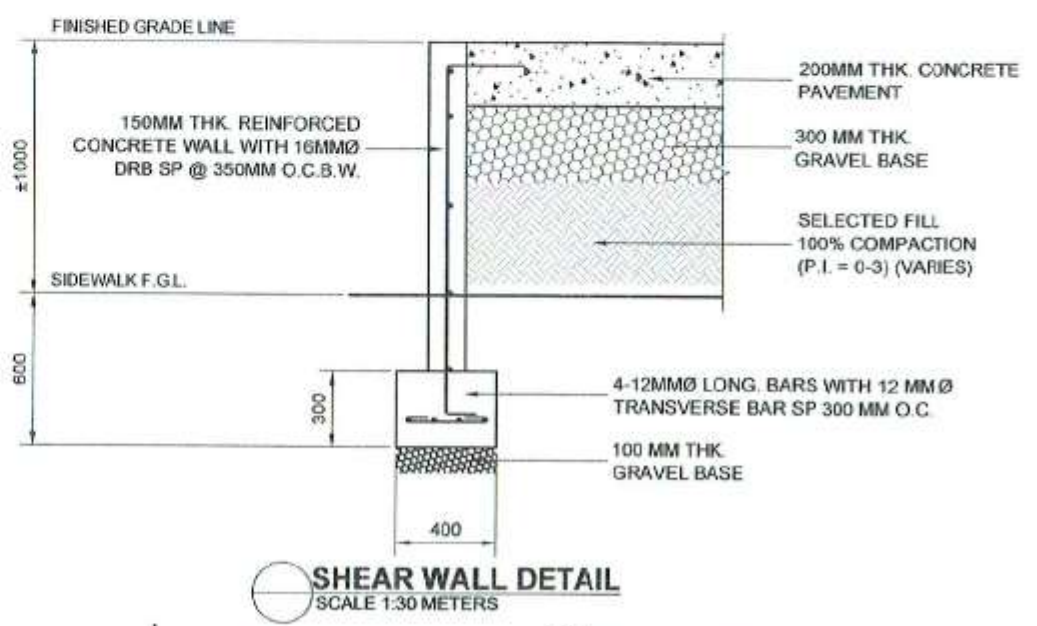
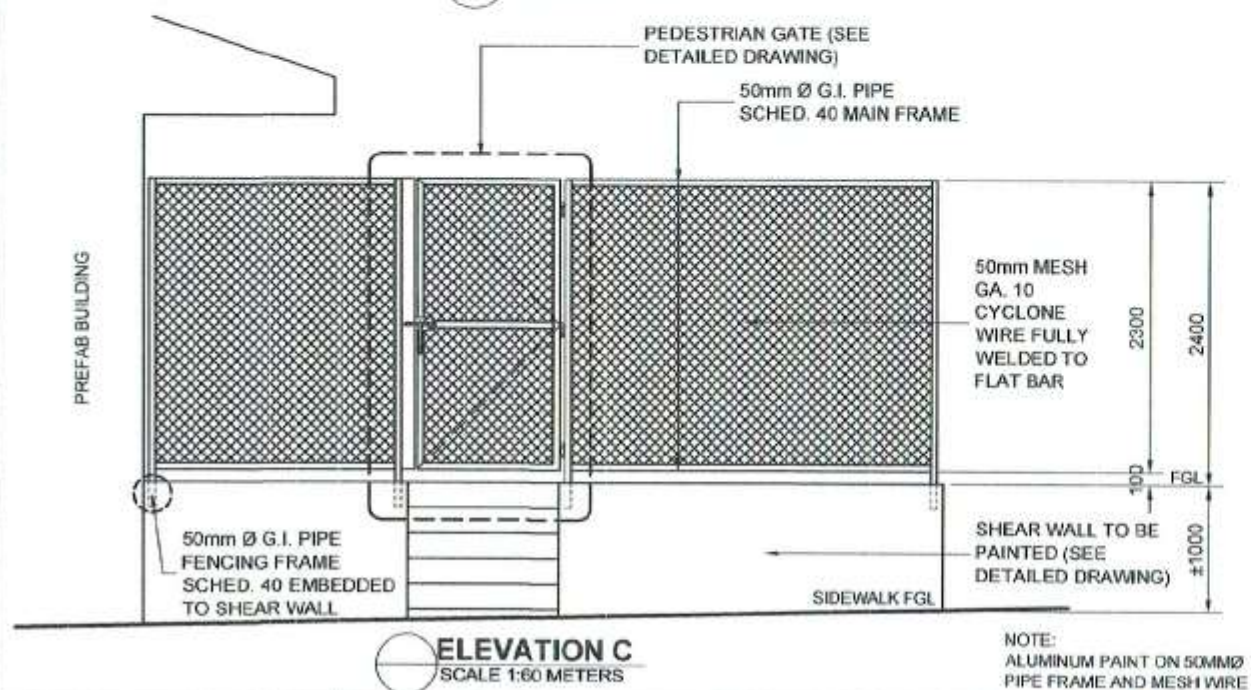
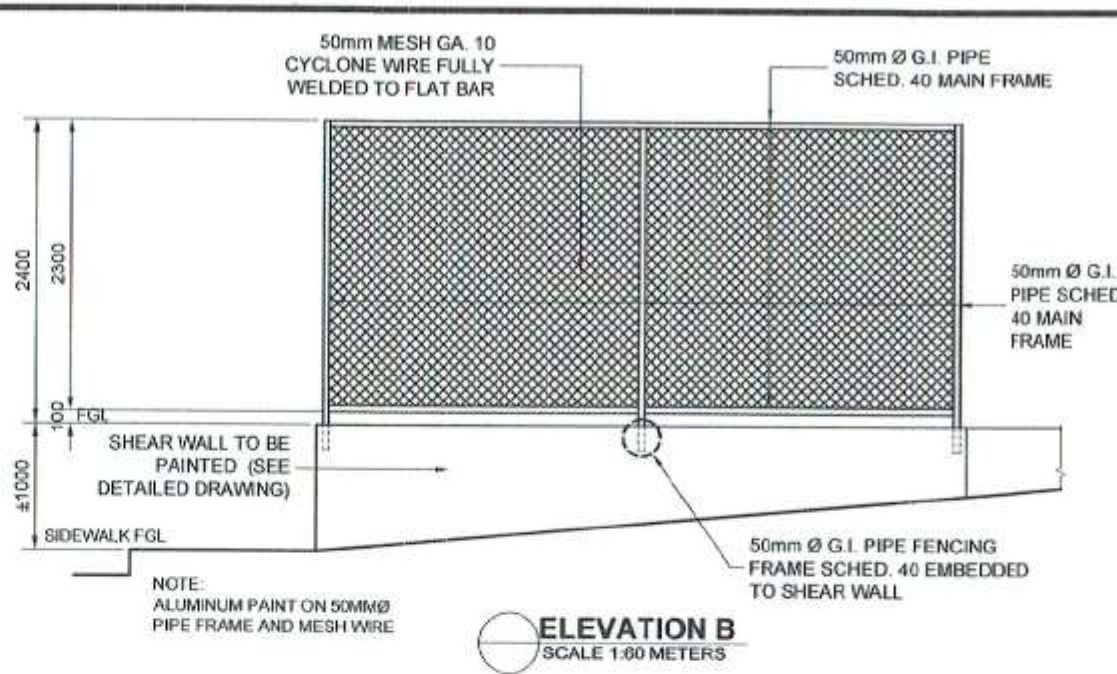
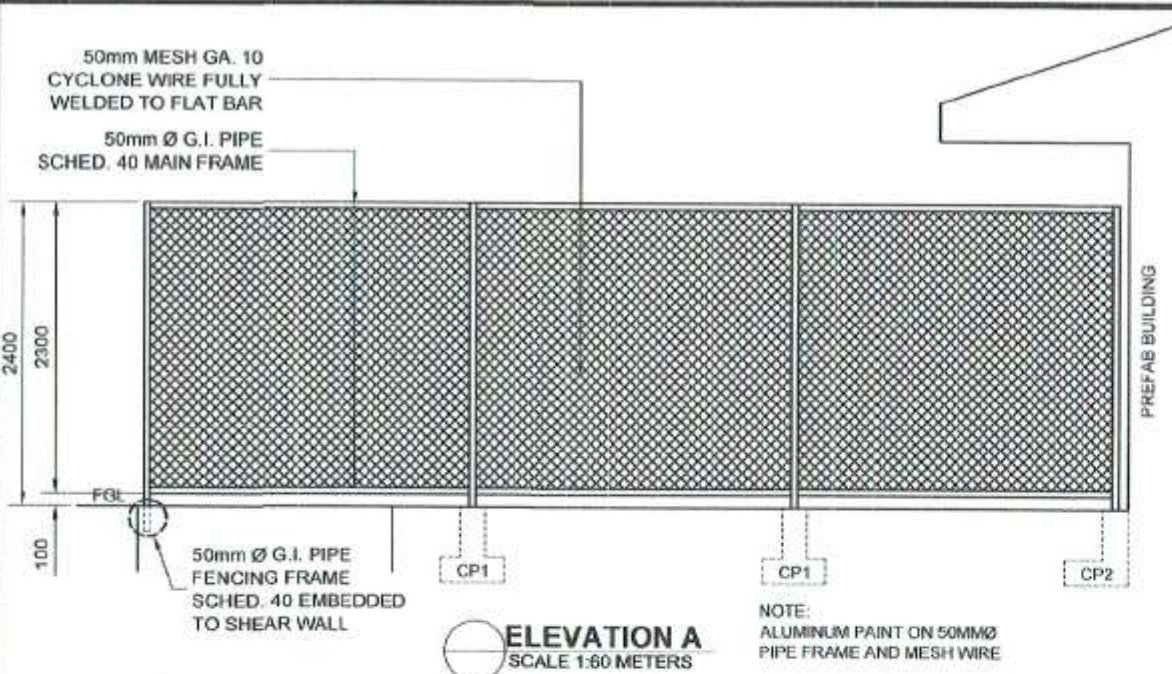


HTS CONNECTION DETAIL @ GATE
SCALE 1:10 METERS



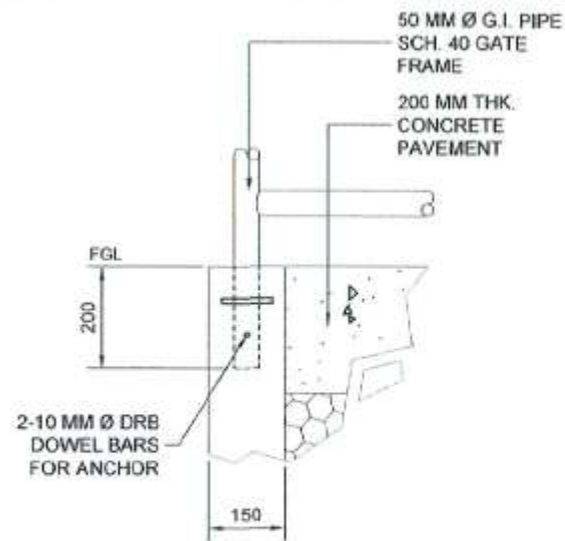
FENCE PLAN AT BUREAU OF QUARANTINE
SCALE 1:100 METERS

FENCE FOUNDATION PLAN AT BUREAU OF QUARANTINE
SCALE 1:100 METERS

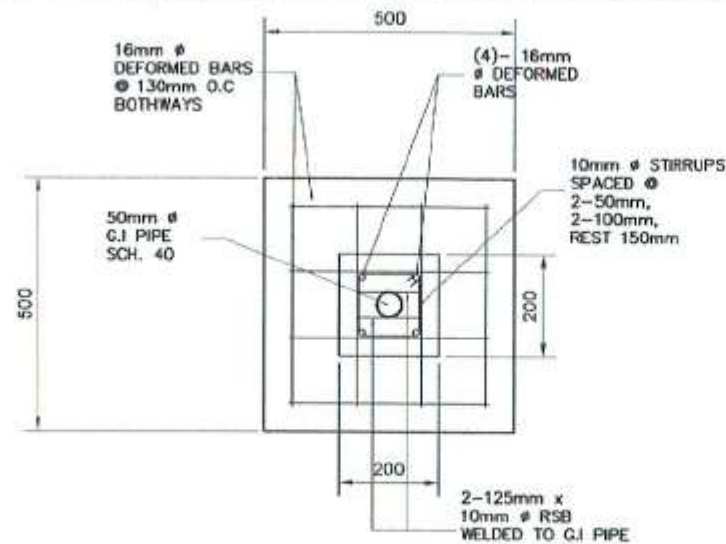


<p>PHILIPPINE PORTS AUTHORITY PMO-SOCSARGEN</p>	<p>PROJECT TITLE/LOCATION: REBLOCKING OF ACCESS ROAD ALONG MAIN GATE TO WESTERN WHARF, OPEN STORAGE AREAS 1 & 2, IN FRONT & BACK PORTION OF PCG COMPOUND, IN FRONT OF PREFAB BUILDING INCLUDING SLOPE CORRECTION; AND INSTALLATION OF SWING GATE THRU HOLCIM COMPOUND, PORT OF GENERAL SANTOS, NAKAR WHARF, GENERAL SANTOS CITY</p>	<p>CAD BY: VICTOR A. JASPE Engineering Assistant A</p>	<p>CHECKED BY: CHARMAINE D. JUNE L. MANTOYA Senior Engineer A (J.O.)</p>	<p>REVIEWED BY: MARIA VIVIEN M. TANCO Acting Principal Engineer</p>	<p>RECOMMENDING APPROVAL: JAMESON L. LEE ESD Manager</p>	<p>APPROVED BY: ATTY. CESAR M. DATAYA Acting Port Manager</p>	<p>SHEET CONTENT: 1. Elevation A 2. Elevation B 3. Elevation C 4. Shear Wall Detail</p>	<p>Date: 1/11/2017 SHEET No.: 13/22</p>
--	---	--	--	---	--	---	---	--

g:\projects\aspc\projects\2017\re-blocking of access road.dwg

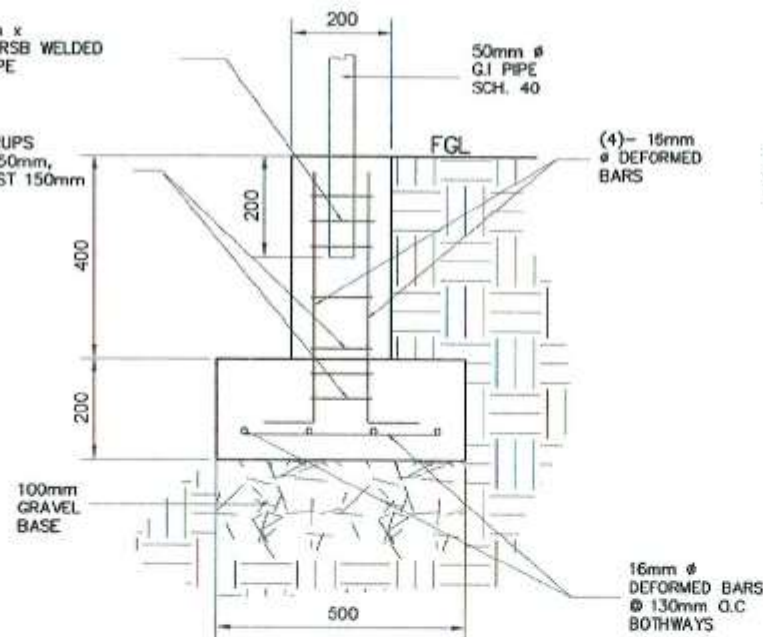


BLOW-UP DETAIL
SCALE 1:15 METERS

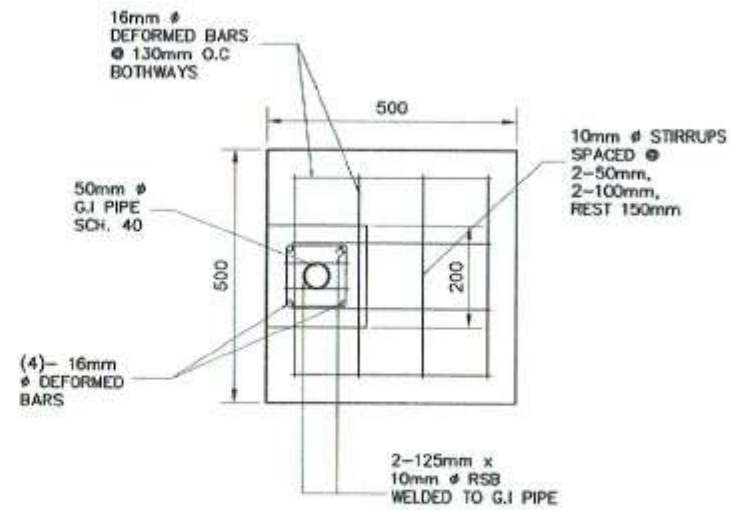


2-125mm x
10mm Ø RSB WELDED
TO G.I. PIPE

10mm Ø STIRRUPS
SPACED Ø 2-50mm,
2-100mm, REST 150mm

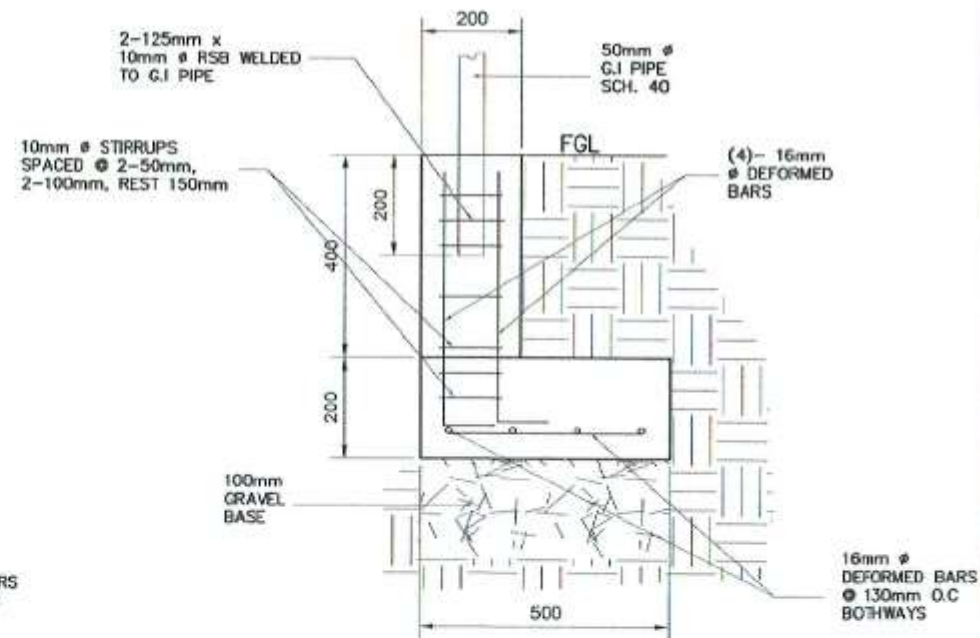


CONCRETE PEDESTAL 1 (CP1) DETAIL
SCALE 1:15

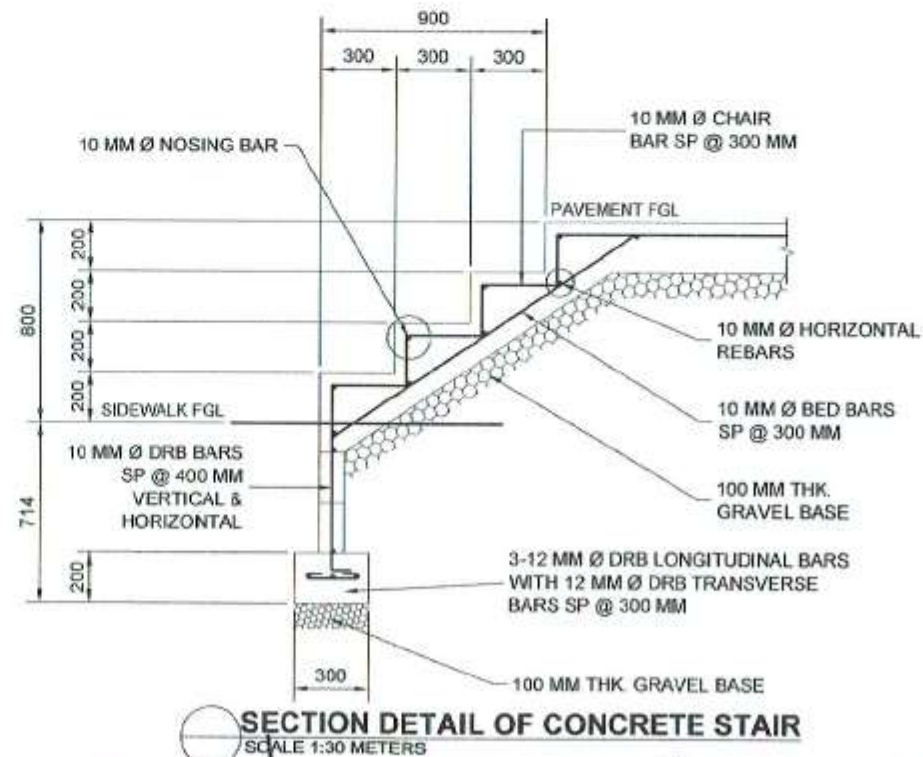
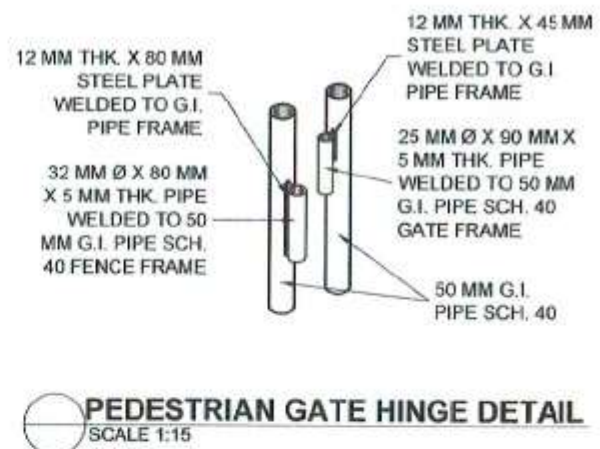


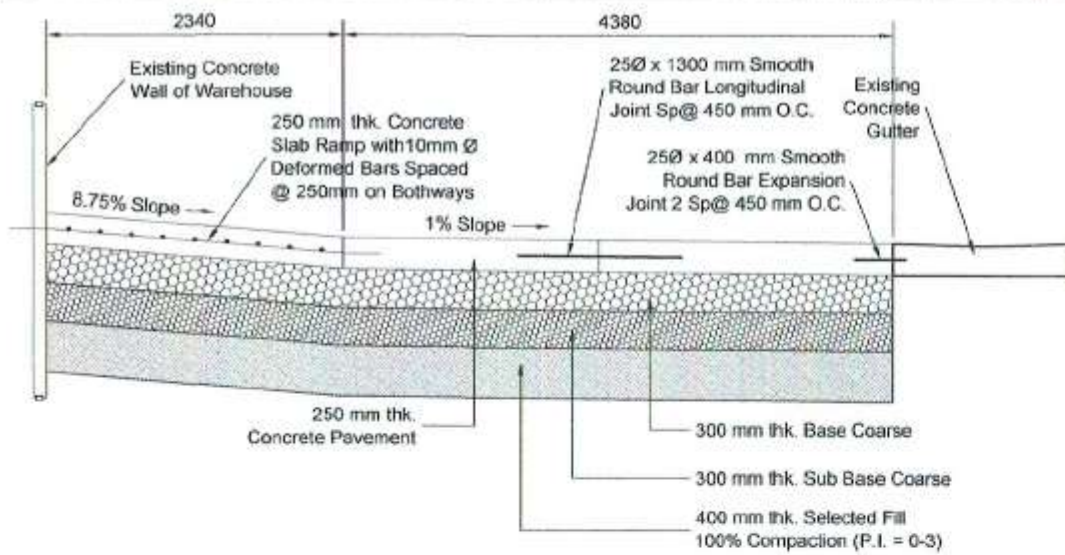
2-125mm x
10mm Ø RSB WELDED
TO G.I. PIPE

10mm Ø STIRRUPS
SPACED Ø 2-50mm,
2-100mm, REST 150mm

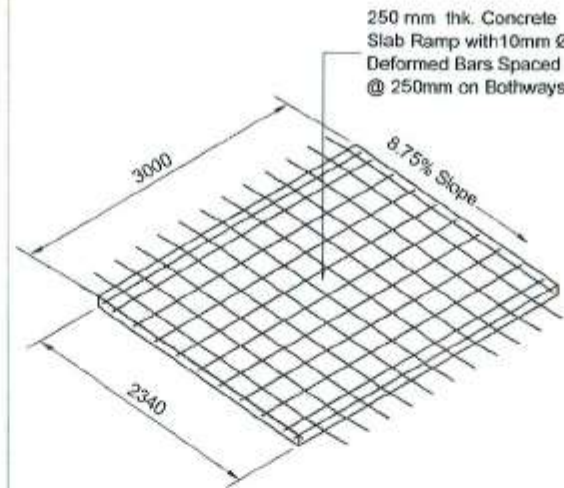


CONCRETE PEDESTAL 2 (CP2) DETAIL
SCALE 1:15

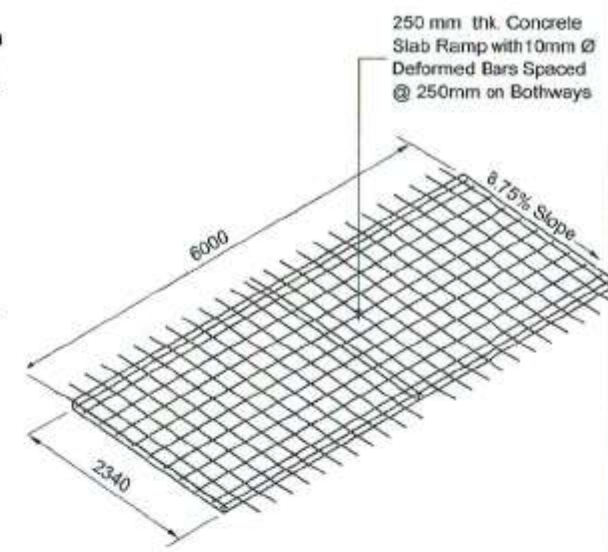




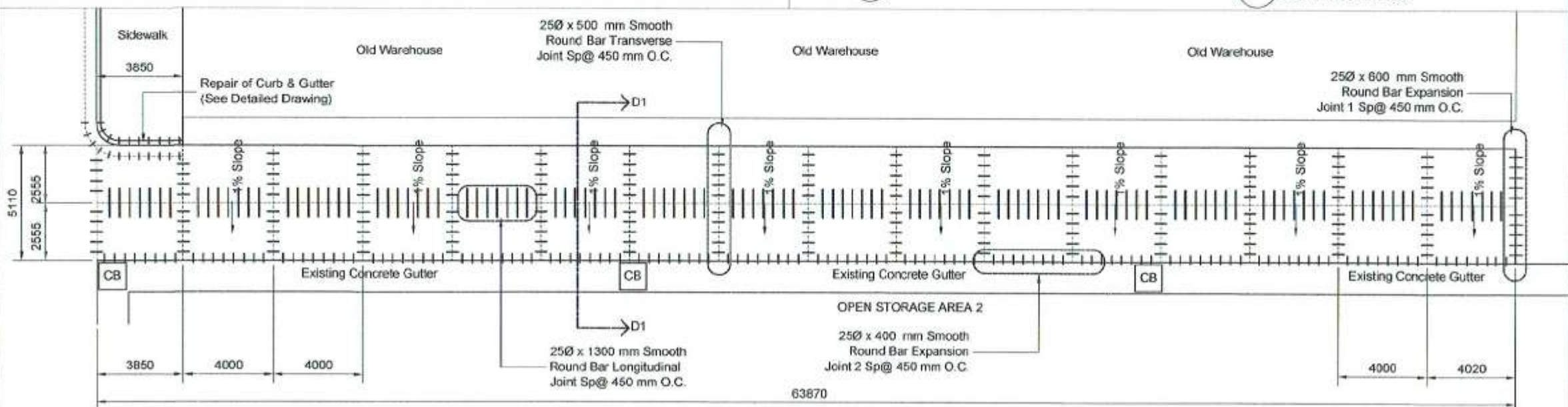
SECTION THRU C3
SCALE 1:60 METERS



RAMP 1 ISOMETRIC DETAIL
SCALE 1:75 METERS



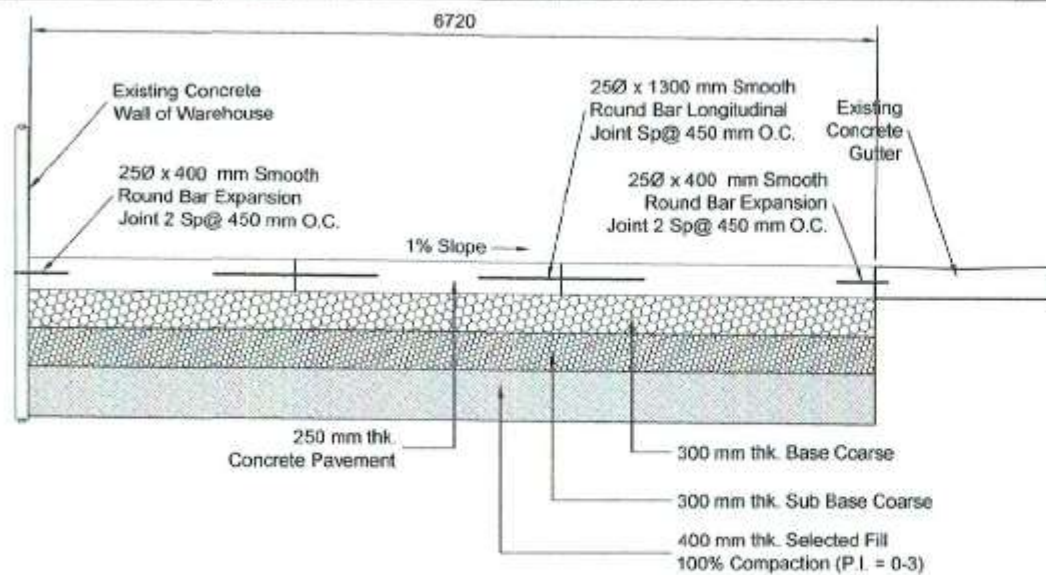
RAMP 2 ISOMETRIC DETAIL
SCALE 1:100 METERS



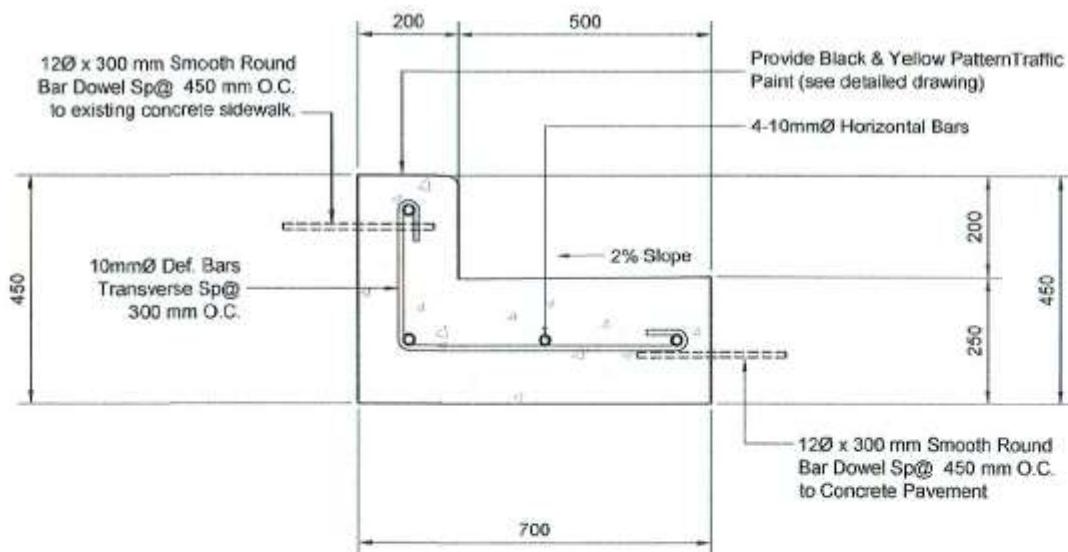
BLOW-UP PLAN OF PAVEMENT D
SCALE 1:225 METERS

<p>PHILIPPINE PORTS AUTHORITY PMO-SOCSARGEN</p>	<p>PROJECT TITLE/LOCATION: REBLOCKING OF ACCESS ROAD ALONG MAIN GATE TO WESTERN WHARF, OPEN STORAGE AREAS 1 & 2, INFRONT & BACK PORTION OF PCG COMPOUND, INFRONT OF PREFAB BUILDING INCLUDING SLOPE CORRECTION, AND INSTALLATION OF SWING GATE THRU HOLCIM COMPOUND, PORT OF GENERAL SANTOS, MAKAR WHARF, GENERAL SANTOS CITY</p>	<p>CAD BY: VICTOR A. JASPE Engineering Assistant A</p>	<p>CHECKED BY: CHARMAINE D. JUNE L. MANTOYA Senior Engineer A (J.D.)</p>	<p>REVIEWED BY: MARIA VIVIEN M. Tanco Acting Principal Engineer</p>	<p>RECOMMENDING APPROVAL: JAMESON L. LEE ESQ Manager</p>	<p>APPROVED BY: ATTY. CESAR V. DATAYA Acting Port Manager</p>	<p>SHEET CONTENT: 1. Section Thru C3 2. Ramp 1 Isometric Detail 3. Ramp 2 Isometric Detail 4. Blow-Up Plan of Pavement D</p>	<p>Date: 9/11/2017 SHEET No.: 17/22</p>
--	---	--	--	---	--	---	--	--

G:\Vigilante\projects\2017\09-reblocking of access road.dwg



SECTION THRU D1
SCALE 1:60 METERS

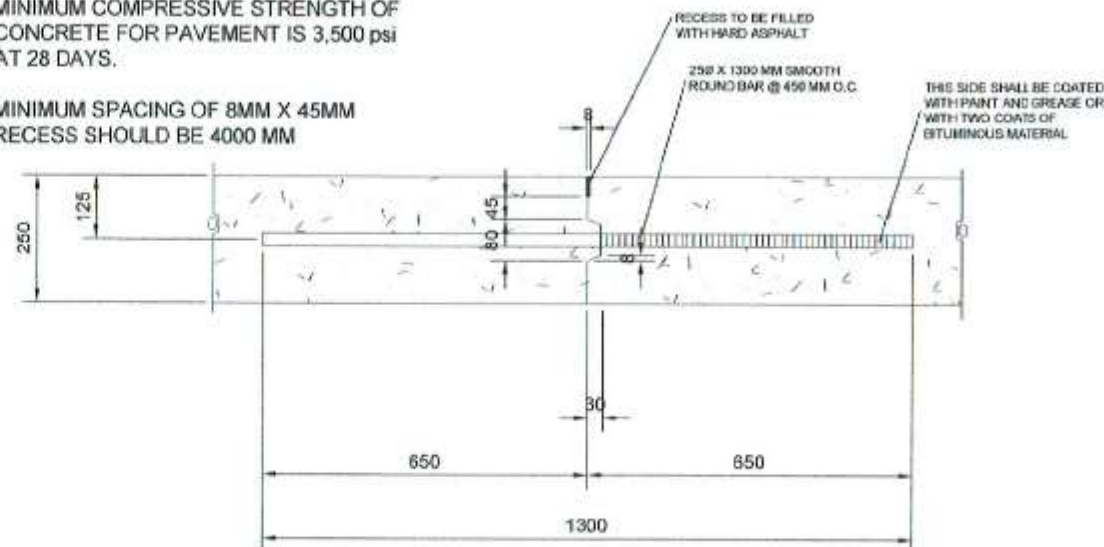


CURB AND GUTTER DETAIL
SCALE 1:15 METERS

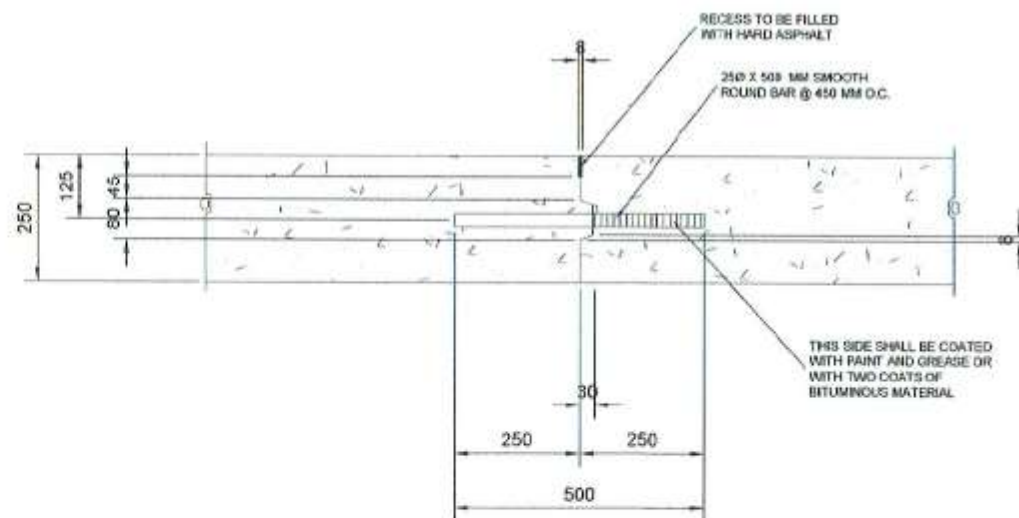
NOTES :

MINIMUM COMPRESSIVE STRENGTH OF CONCRETE FOR PAVEMENT IS 3,500 psi AT 28 DAYS.

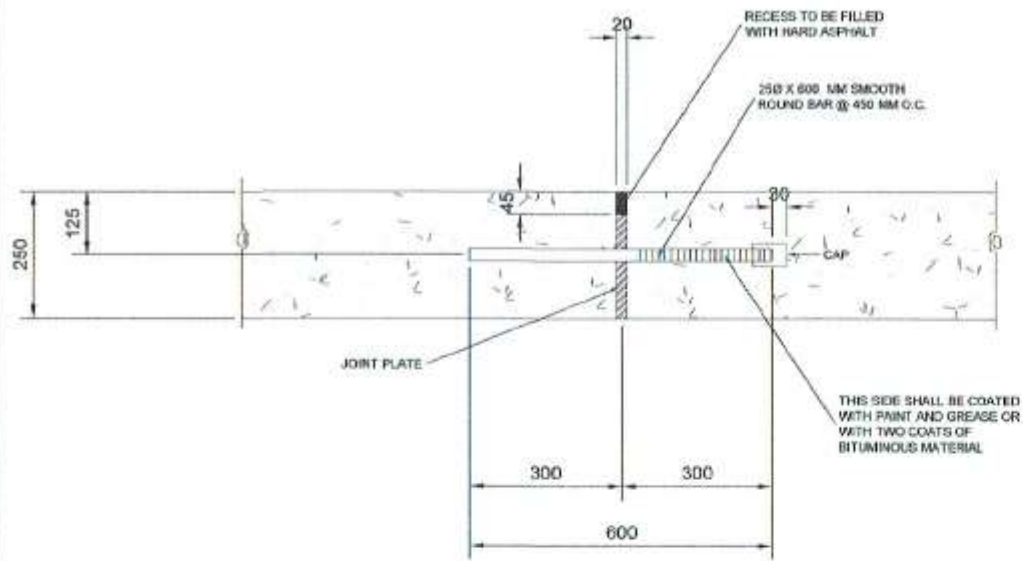
MINIMUM SPACING OF 8MM X 45MM RECESS SHOULD BE 4000 MM



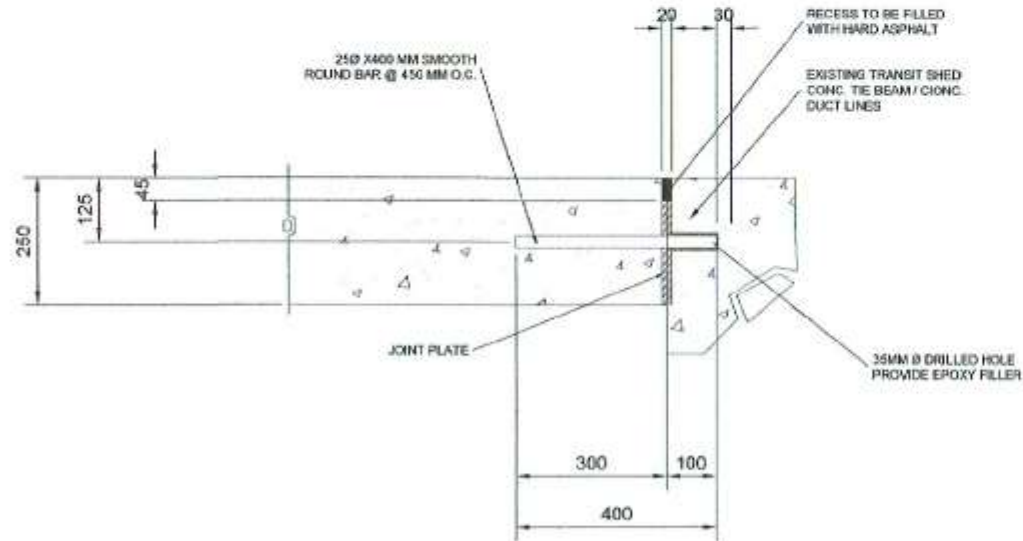
DETAIL OF LONGITUDINAL JOINT
SCALE 1:15 METERS



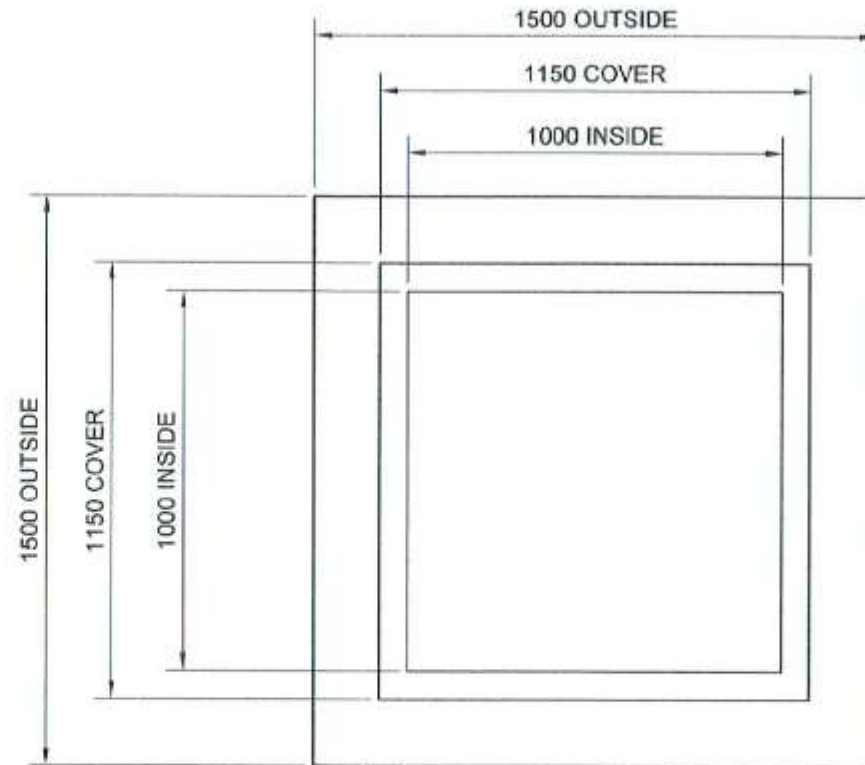
DETAIL OF TRANSVERSE JOINT
SCALE 1:15 METERS




DETAIL OF EXPANSION JOINT 1
SCALE 1:15 METERS

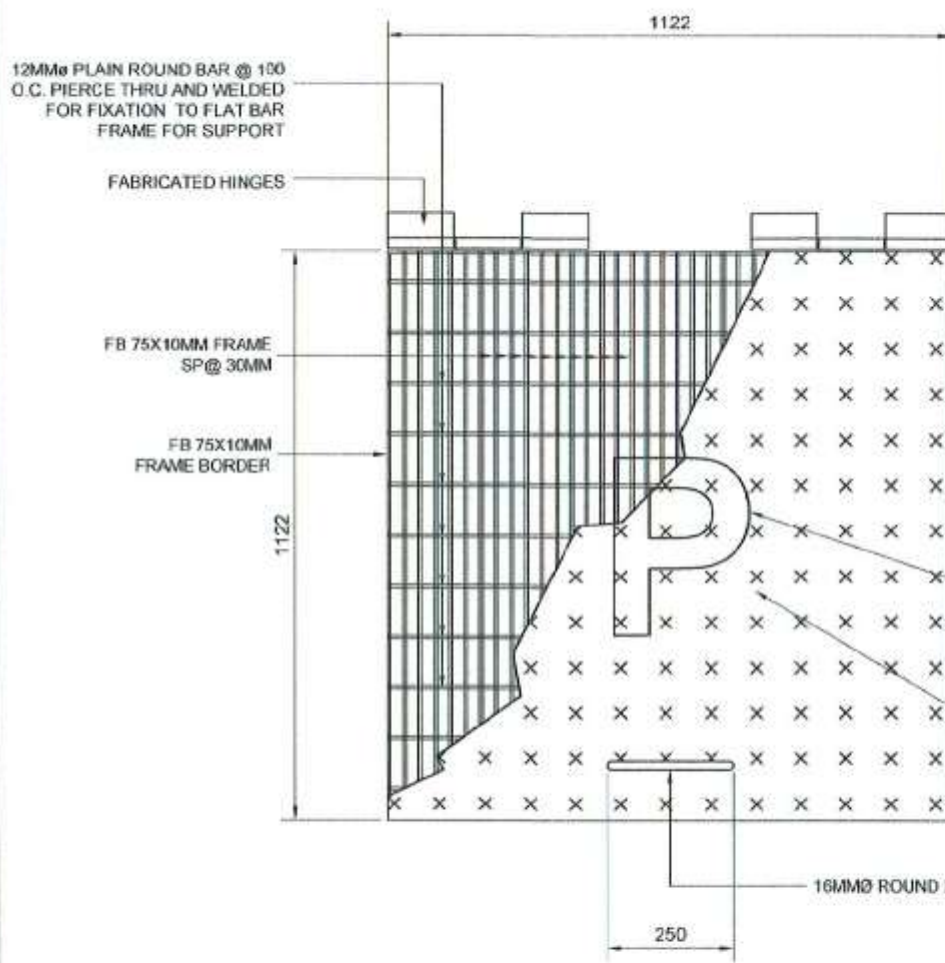


DETAIL OF EXPANSION JOINT 2 @ WALLS & DUCT LINES
SCALE 1:15 METERS



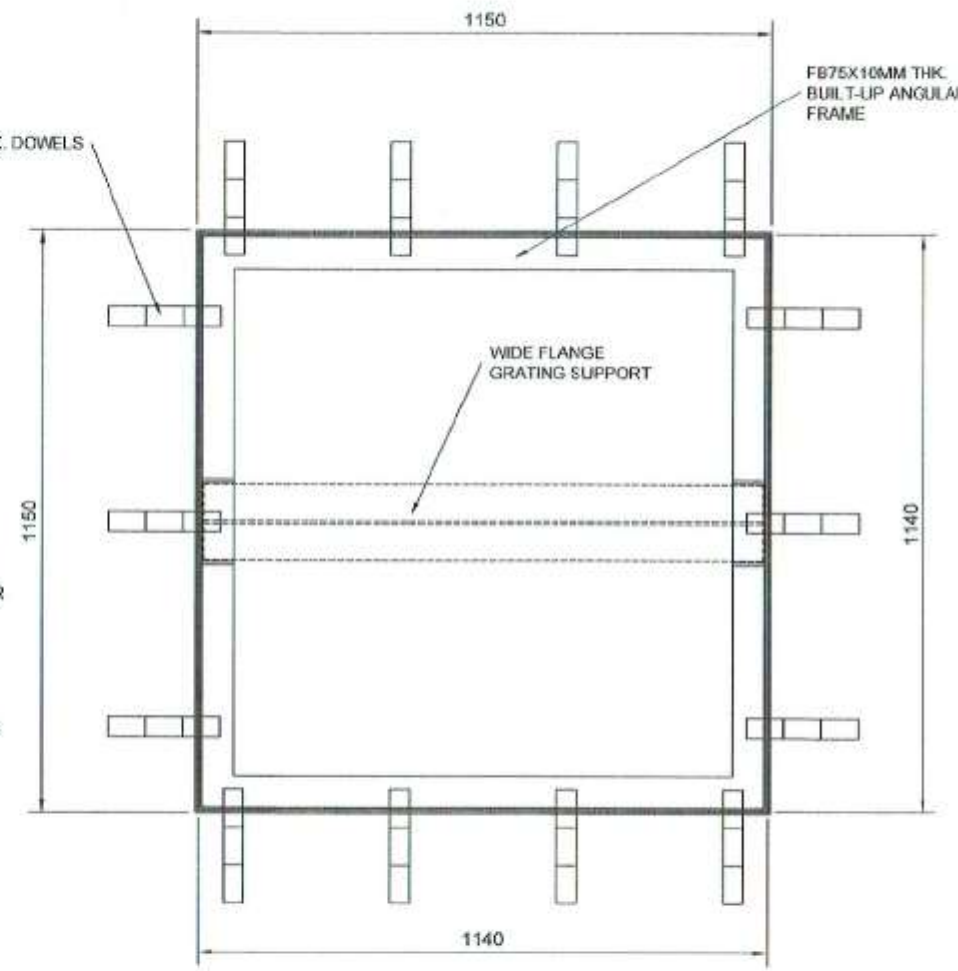
EXISTING ELEC. MANHOLE COVER PLAN
SCALE 1:25 METERS

 <p>PHILIPPINE PORTS AUTHORITY PMO - SOCSARGEN</p>	<p>PROJECT TITLE/LOCATION: REBLOCKING OF ACCESS ROAD ALONG MAIN GATE TO WESTERN WHARF, OPEN STORAGE AREAS 1 & 2, IN FRONT & BACK PORTION OF PCG COMPOUND, IN FRONT OF PREFAB BUILDING INCLUDING SLOPE CORRECTION, AND INSTALLATION OF SWING GATE THRU HOLCIM COMPOUND, PORT OF GENERAL SANTOS, MAKAR WHARF, GENERAL SANTOS CITY</p>	<p>CAD BY:  VICTOR A. JASPE Engineering Assistant A</p>	<p>CHECKED BY:  CHARMAINE DJUNE L. MANTOYA Senior Engineer A (J.O.)</p>	<p>REVIEWED BY:  MARIA VIVIEN M. TANCO Acting Principal Engineer</p>	<p>RECOMMENDING APPROVAL:  JAMESON L. LEE ESD Manager</p>	<p>APPROVED BY:  ATTY. CESAR M. DATAYA Acting Port Manager</p>	<p>SHEET CONTENT: 1. Detail of Expansion Joint 1 2. Detail of Expansion Joint 2 @ Walls & Duct Lines 3. Existing Elec. Manhole Cover Plan</p>	<p>Date: 9/11/2017 SHEET No.: 19/22</p>
---	--	--	--	---	--	---	--	--



ELEC. MANHOLE COVER DET. (2-UNITS)
SCALE 1:15 METERS

FLAT BARS WELDED TO TWIST RODS BY FORGE WELDING TECHNOLOGY (PROCESS OF WELDING BY FUSION). MATERIALS CONFORMED WITH AS367 GRADE 250, BS4360, GRADE 43A STANDARDS OR EQUIVALENT. FABRICATION IN ACCORDANCE WITH STANDARDS BS EN ISO 1461 LOAD CAPACITY: 8 TONS



FRAME DETAIL (2-UNITS)
SCALE 1:15 METERS

<p>PHILIPPINE PORTS AUTHORITY PMO - SOCSARGEN</p>	<p>PROJECT TITLE/LOCATION: REBLOCKING OF ACCESS ROAD ALONG MAIN GATE TO WESTERN WHARF, OPEN STORAGE AREAS 1 & 2, INFRONT & BACK PORTION OF PCG COMPOUND, INFRONT OF PREFAB BUILDING INCLUDING SLOPE CORRECTION; AND INSTALLATION OF SWING GATE THRU HOLDIN COMPOUND, PORT OF GENERAL SANTOS, MAKAR WHARF, GENERAL SANTOS CITY</p>	<p>CAD BY: VICTOR A. JASPE Engineering Assistant A</p>	<p>CHECKED BY: CHARMAINE D. JUNE L. MANTOYA Senior Engineer A (J.O.)</p>	<p>REVIEWED BY: MARIA VIVIEN M. TANCO Acting Principal Engineer</p>	<p>RECOMMENDING APPROVAL: JAMESON L. LEE ESQ Manager</p>	<p>APPROVED BY: ATTY. CESAR M. BATRYA Acting Port Manager</p>	<p>SHEET CONTENT: 1. Existing EMH Section 2. Blow-up Detail 3. COA Standard Billboard</p>	<p>Date: 9/11/2017 SHEET No.: 20/22</p>
--	---	--	--	---	--	---	---	--

C:\Users\jaspas\project\2017\09-reblocking of access road.dwg

15MM THK. CHECKERED STEEL
PLATE COVER PAINTED,
WELDED TO GRATING

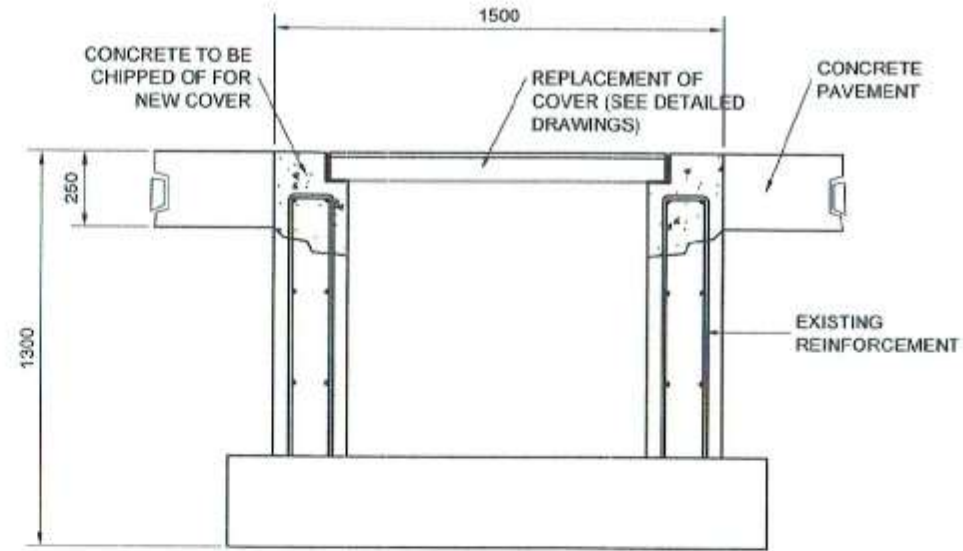
FB 75X10MM THK.
FRAME SP@ 30MM

12MM ϕ PLAIN ROUND BAR
@ 100 O.C. PIERCE THRU
AND WELDED FOR
FIXATION TO FLAT BAR
FRAME FOR SUPPORT

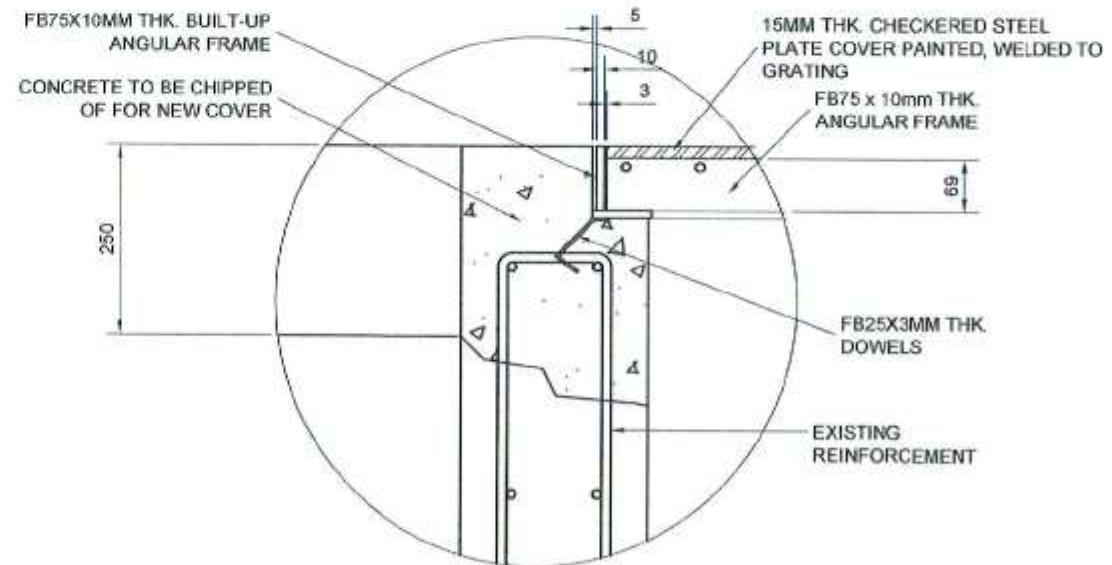
FB 75X10MM THK.
FRAME BORDER

FB75X10MM THK.
BUILT-UP ANGULAR
FRAME

ISOMETRIC VIEW OF MANHOLE COVER PARTS (PART PLAN)
SCALE 1:3 METERS



EXISTING ELECTRICAL MANHOLE SECTION
SCALE 1:25 METERS



BLOW-UP DETAIL
SCALE 1:10 METERS

8 FEET



Makar Wharf, Brgy. Labangal, General Santos City

Project: REBLOCKING OF ACCESS ROAD ALONG MAIN GATE TO WESTERN WHARF, OPEN STORAGE AREAS 1 & 2, AND INFRONT OF PREFAB BLDG. & PCG COMPOUND, INCLUDING SLOPE CORRECTION; AND INSTALLATION OF SWING GATE THRU HOLCIM AREA

Location: PORT OF GENERAL SANTOS, MAKAR WHARF, GENERAL SANTOS CITY

Cost: Php (contract amount)

Fund Source/s: Corporate Funds

IMPLEMENTING AGENCY: PHILIPPINE PORTS AUTHORITY
CONTRACTOR: (COMPANY NAME OF THE CONTRACTOR)
BRIEF DESCRIPTION OF PROJECT: REPAIR OF CONCRETE PAVEMENT ROADS AND REPAIR OF EXISTING GATE

PROJECT DETAILS:

PROJECT DATE			PROJECT STATUS				REMARKS
DURATION	STARTED	TARGET DATE OF COMPLETION	PERCENTAGE OF COMPLETION	AS OF (DATE)	COST INCURRED TO DATE	DATE COMPLETED	

FOR PARTICULARS OR COMPLAINTS ABOVE THIS PROJECT, PLEASE CONTACT THE REGIONAL OFFICE OR CLUSTER WHICH HAS AUDIT JURISDICTION ON THIS PROJECT:

COA REGIONAL OFFICE NO./CLUSTER: _____
ADDRESS: _____
CONTACT NO.: _____ OR TEXT COA CITIZENS DESK AT 0913-538-1975.

NOTE: TARPAULIN WHITE 8 FEET BY 8 FEET. RESOLUTION: 70 dpi. FONT: HELVETICA.
FONT SIZE: MAIN INFORMATION - 3", SUB-INFORMATION - 1". FONT COLOR: BLACK. (BASE ON COA CIRCULAR NO. 2013-004 DATED JANUARY 30, 2013. "INFORMATION AND PUBLICITY ON PROGRAMS / PROJECTS / ACTIVITIES OF GOVERNMENT AGENCIES".

COA STANDARD BILLBOARD DESIGN
SCALE 1:20 METERS

PROJECT TITLE/LOCATION:

REBLOCKING OF ACCESS ROAD ALONG MAIN GATE TO WESTERN WHARF, OPEN STORAGE AREAS 1 & 2, INFRONT & BACK PORTION OF PCG COMPOUND, INFRONT OF PREFAB BUILDING INCLUDING SLOPE CORRECTION, AND INSTALLATION OF SWING GATE THRU HOLCIM COMPOUND, PORT OF GENERAL SANTOS, MAKAR WHARF, GENERAL SANTOS CITY

CAD BY:

VICTOR A. JASPE
Engineering Assistant A

CHECKED BY:

CHARMAINE BUENE L. MANTOYA
Senior Engineer A (J.O.)

REVIEWED BY:

MARIA VIVIEN M. TANCO
Acting Principal Engineer

RECOMMENDING APPROVAL:

JAMESON L. LEE
ESD Manager

APPROVED BY:

ATTY. CESAR M. DATAYA
Acting Port Manager

SHEET CONTENT:

1. COA Standard Billboard

Date: 1/11/2017

SHEET No.:

22/22