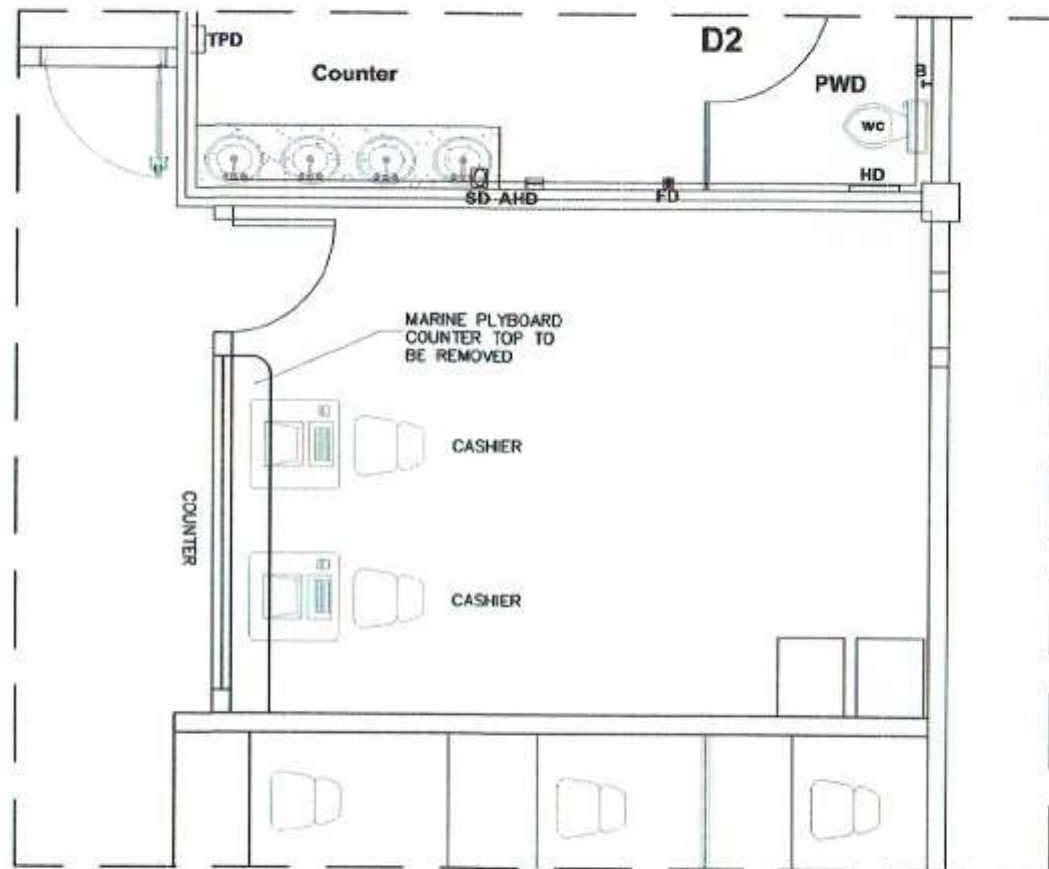
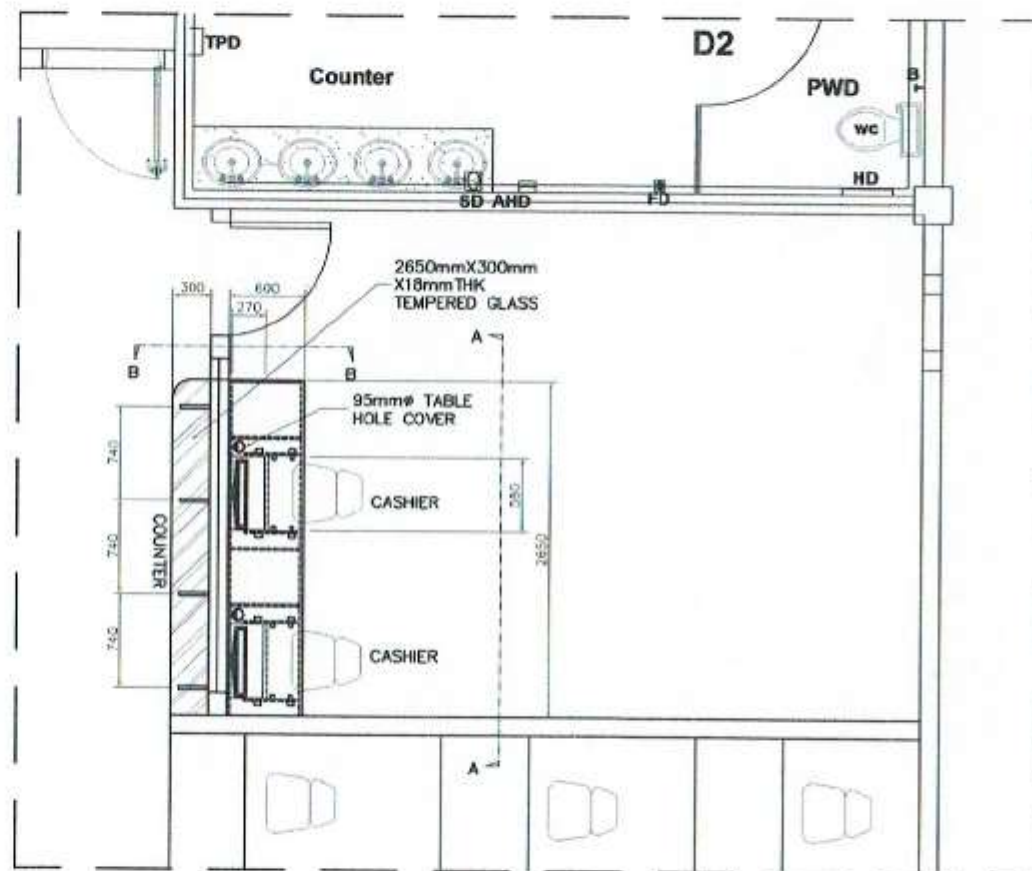




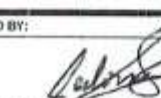
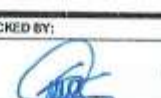
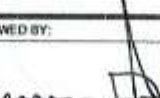



<p>Republic of the Philippines PHILIPPINE PORTS AUTHORITY PMO-SOCSARGEN</p>	<p>PROJECT TITLE/LOCATION: REPAIR & MAINTENANCE OF PORT PHYSICAL FACILITIES-2017: 1. REPAIR OF BTO CASHIER'S TABLE; 2. REPAIR OF FORMER FOMD FIELD OFFICE, PORT OF GENERAL SANTOS</p>	<p>CAD BY: JOE CARLO I. SORIANO Engineering Assistant (J.O)</p>	<p>CHECKED BY: CHARMAINE D. JUNE MANTOYA Senior Engineer A (J.O)</p>	<p>REVIEWED BY: MARIA VIVIEN M. TANCO Acting Principal Engineer</p>	<p>RECOMMENDING APPROVAL: JAMESON L. LEE ESD Manager</p>	<p>APPROVED BY: ATTY. CESAR M. DATAYA Acting Port Manager</p>	<p>SHEET CONTENT: 1. LOCATION PLAN</p>	<p>Date: SHEET No.: 1/24</p>
--	---	--	---	--	---	--	--	---

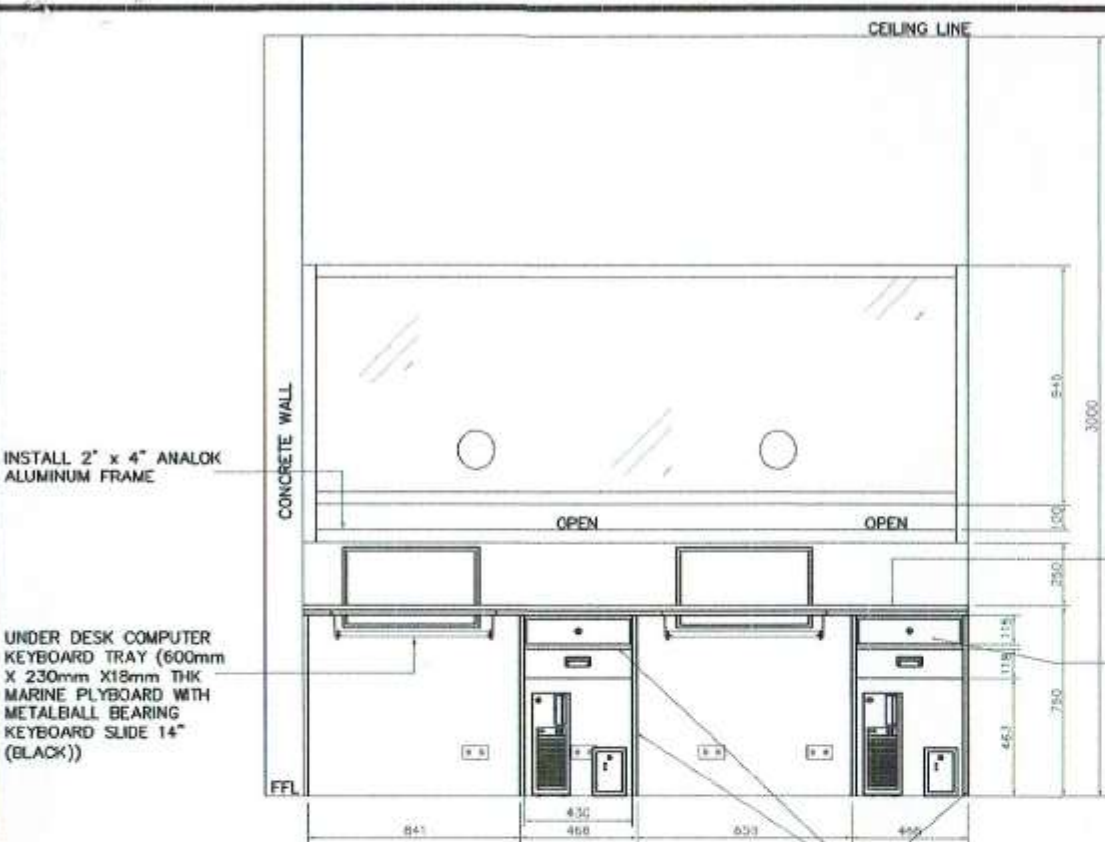


 **BTO CASHIER LAYOUT (EXISTING)**
SCALE 1:60

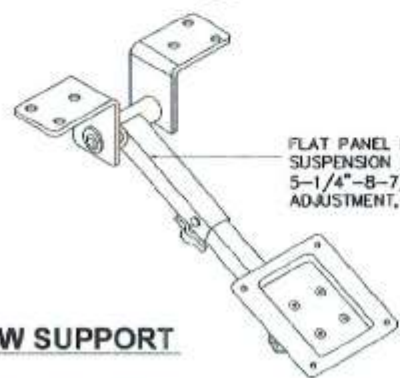


 **BTO CASHIER LAYOUT SHOWING FABRICATED TABLE**
SCALE 1:60

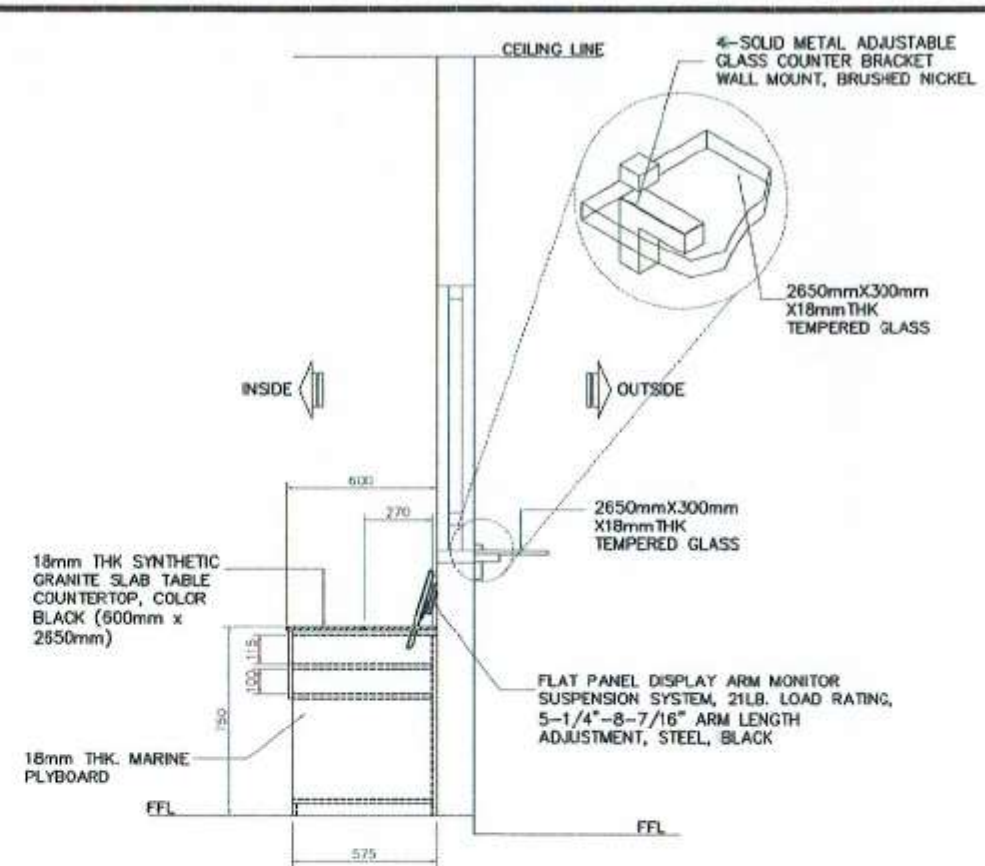
 <p>Republic of the Philippines PHILIPPINE PORTS AUTHORITY PMO-SOCSARGEN</p>	<p>PROJECT TITLE/LOCATION: REPAIR & MAINTENANCE OF PORT PHYSICAL FACILITIES-2017: 1. REPAIR OF BTO CASHIER'S TABLE; 2. REPAIR OF FORMER FCMD FIELD OFFICE, PORT OF GENERAL SANTOS</p>	<p>CAD BY:  JOE CARLO I. SORIANO Engineering Assistant (J.O.)</p>	<p>CHECKED BY:  CHARMAINE DUJANE MANTOYA Senior Engineer A (J.O.)</p>	<p>REVIEWED BY:  MARIA VIVIEN M. TANCO Acting Principal Engineer</p>	<p>CONFORMED:  NIMROD C. BONA Finance Division Manager</p>	<p>RECOMMENDING APPROVAL:  JAMESON L. LEE ESD Manager</p>	<p>APPROVED BY:  ATTY. CESAR M. DATAYA Officer-In-Charge</p>	<p>SHEET CONTENT: 1. BTO CASHIER LAYOUT (EXISTING) 2. BTO CASHIER LAYOUT SHOWING FABRICATED TABLE</p>	<p>Date: SHEET No.: 2/24</p>
---	---	--	---	---	---	--	---	---	---



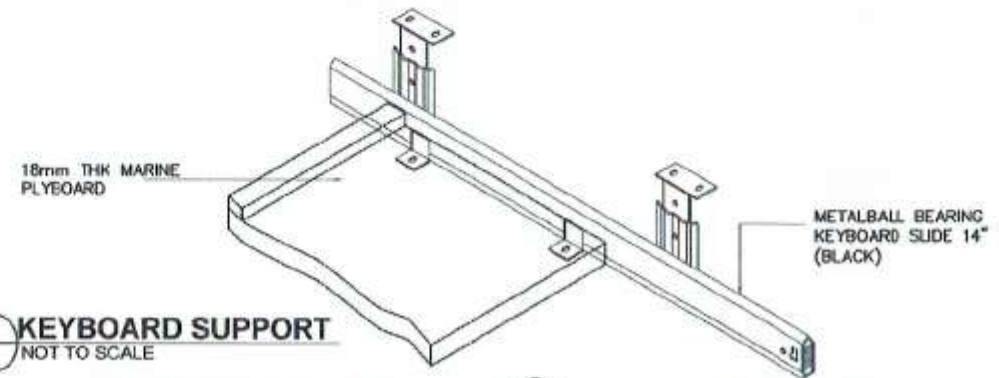
ELEVATION 'A-A'
SCALE 1:30



MONITOR DOWNVIEW SUPPORT
NOT TO SCALE

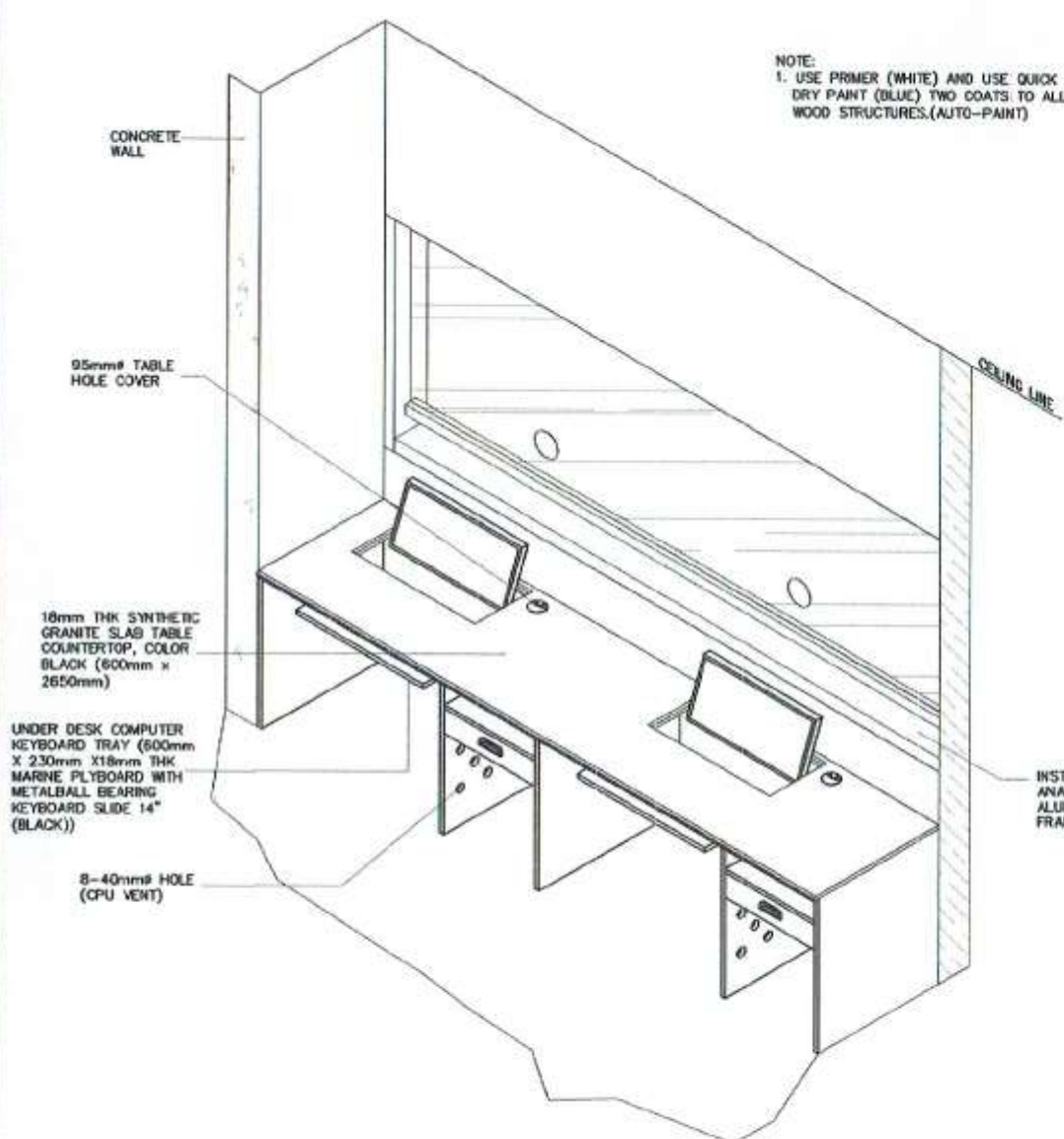


ELEVATION 'B-B'
SCALE 1:30

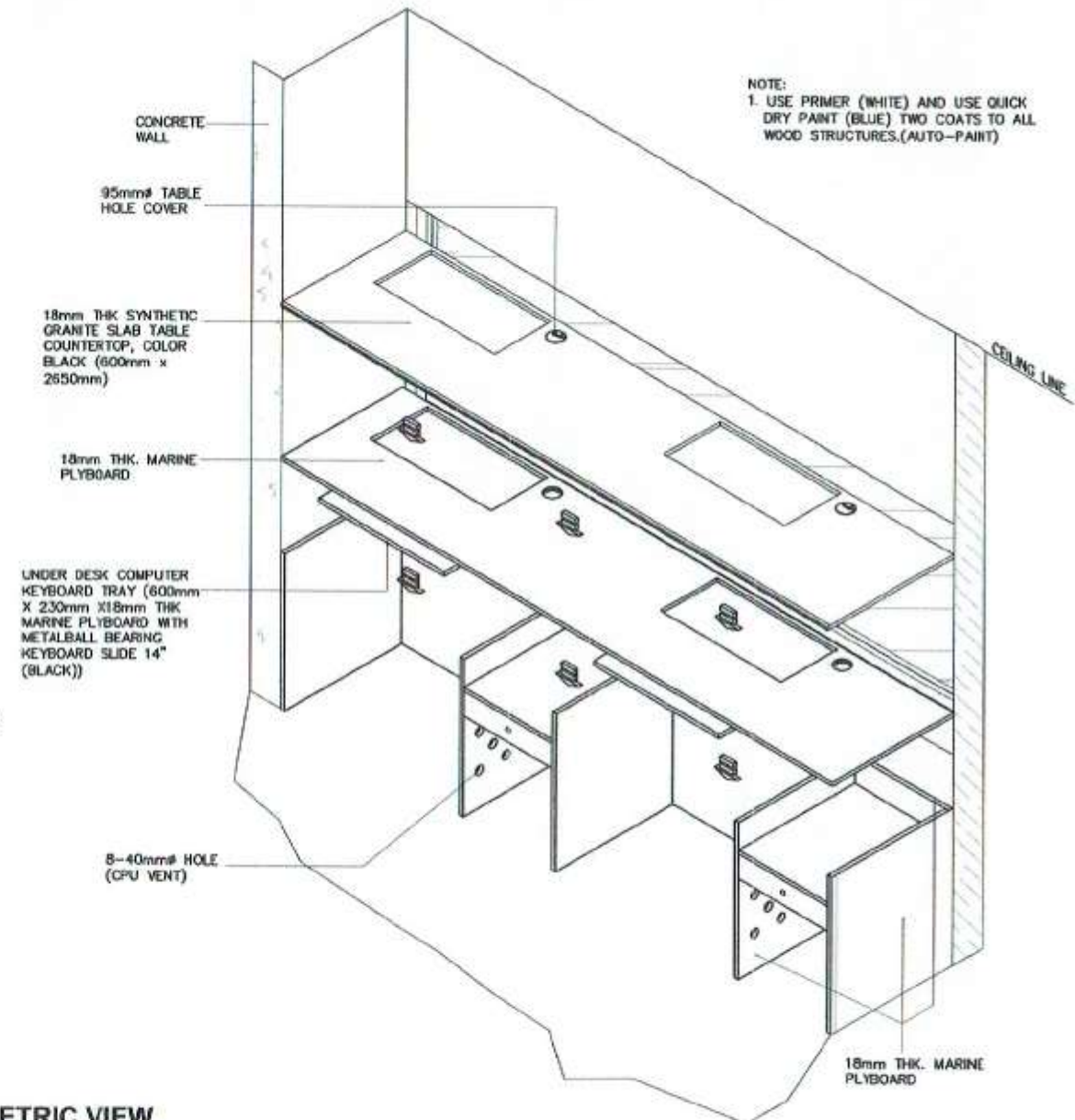


KEYBOARD SUPPORT
NOT TO SCALE

	PROJECT TITLE/LOCATION: REPAIR & MAINTENANCE OF PORT PHYSICAL FACILITIES-2017: 1. REPAIR OF BTO CASHIER'S TABLE; 2. REPAIR OF FORMER PCMD FIELD OFFICE, PORT OF GENERAL SANTOS	CAD BY: JOE CARLO I. SORIANO Engineering Assistant (J.O.)	CHECKED BY: CHARMAINE DUINE MANTOYA Senior Engineer A (J.O.)	REVIEWED BY: MARIA VIVIEN M. TANCO Acting Principal Engineer	CONFORMED: NIMROD C. BONA Finance Division Manager	RECOMMENDING APPROVAL: JAMESON L. LEE ESD Manager	APPROVED BY: ATTY. CESAR M. DATAYA Officer-in-Charge	SHEET CONTENT: 1. ELEVATION 'A-A' 2. ELEVATION 'B-B' 3. MONITOR DOWNVIEW SUPPORT 4. KEYBOARD SUPPORT	Date: SHEET No.: 3/24
--	--	--	---	---	---	--	---	---	---



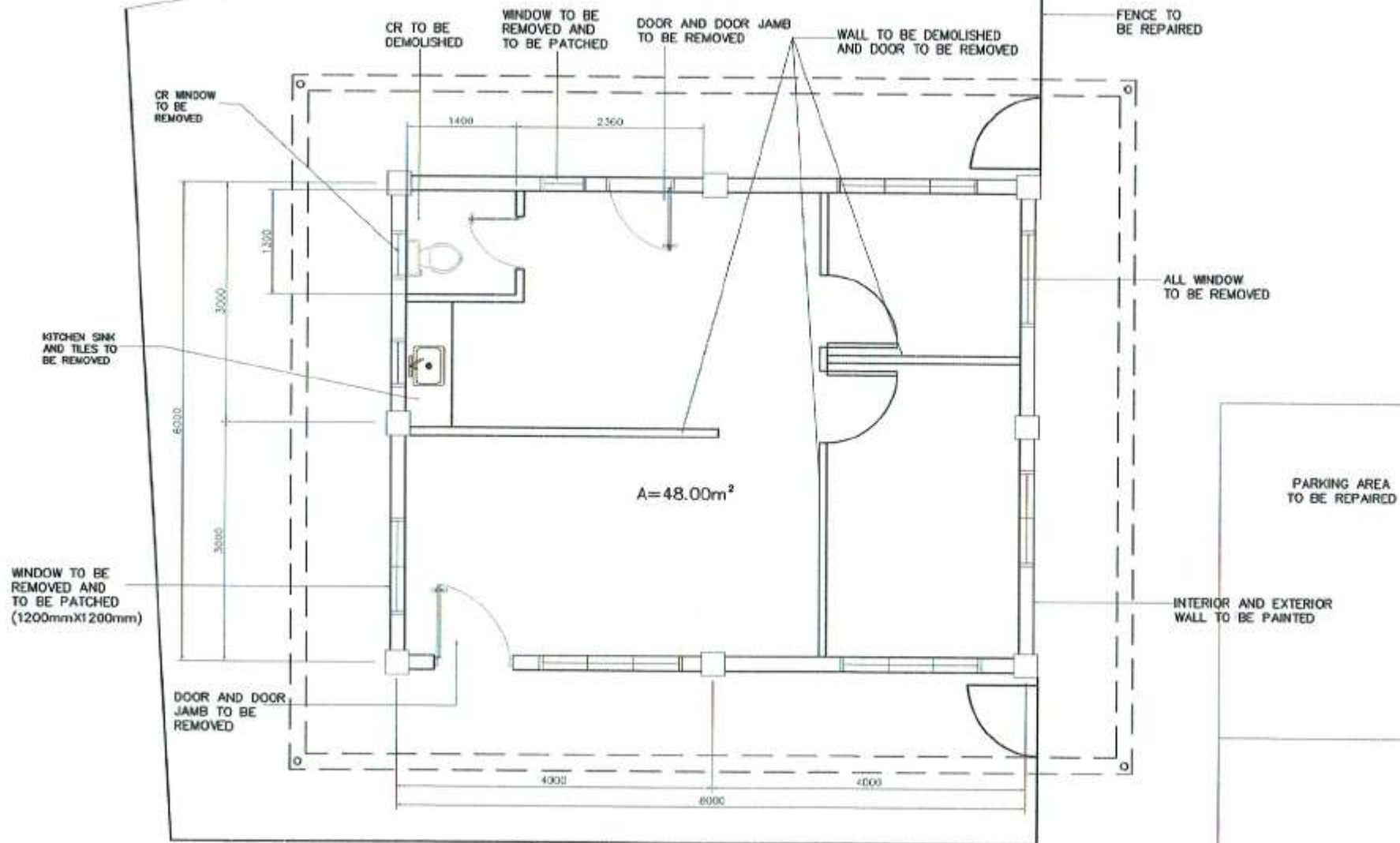
NOTE:
1. USE PRIMER (WHITE) AND USE QUICK DRY PAINT (BLUE) TWO COATS TO ALL WOOD STRUCTURES.(AUTO-PAINT)



NOTE:
1. USE PRIMER (WHITE) AND USE QUICK DRY PAINT (BLUE) TWO COATS TO ALL WOOD STRUCTURES.(AUTO-PAINT)

ISOMETRIC VIEW
NOT TO SCALE

	PROJECT TITLE/LOCATION: REPAIR & MAINTENANCE OF PORT PHYSICAL FACILITIES-2017: 1. REPAIR OF BTO CASHIER'S TABLE; 2. REPAIR OF FORMER FCMD FIELD OFFICE, PORT OF GENERAL SANTOS	CAD BY: JOE CARLO I. SORIANO Engineering Assistant (J.O.)	CHECKED BY: CHARMAINE DUNE MANTOYA Senior Engineer A (J.O.)	REVIEWED BY: MARIA VIVIEN M. TANCO Acting Principal Engineer	CONFORMER: NIMROD C. BONA Finance Division Manager	RECOMMENDING APPROVAL: JAMESON L. LEE ESD Manager	APPROVED BY: ATTY. CESAR M. DATAYA Officer-In-Charge	SHEET CONTENT: 1. ISOMETRIC VIEW	Date: SHEET No. 4/24
--	--	--	--	---	---	--	---	--	---



EXISTING FLOOR PLAN (FCMD)
SCALE 1:75

PROJECT TITLE/LOCATION:

REPAIR & MAINTENANCE OF PORT PHYSICAL FACILITIES-2017: 1. REPAIR OF BTO CASHIER'S TABLE; 2. REPAIR OF FORMER FCMD FIELD OFFICE, PORT OF GENERAL SANTOS

CAD BY:

JOECARLO I. SORIANO
Engineering Assistant (J.O)

CHECKED BY:

CHARMAINE DJUNE MANTOYA
Senior Engineer A (J.O)

REVIEWED BY:

MARIA VIVIEN M. TANCO
Acting Principal Engineer

RECOMMENDING APPROVAL:

JAMESON L. LEE
ESD Manager

APPROVED BY:

ATTY. CESAR M. DATAYA
Acting Port Manager

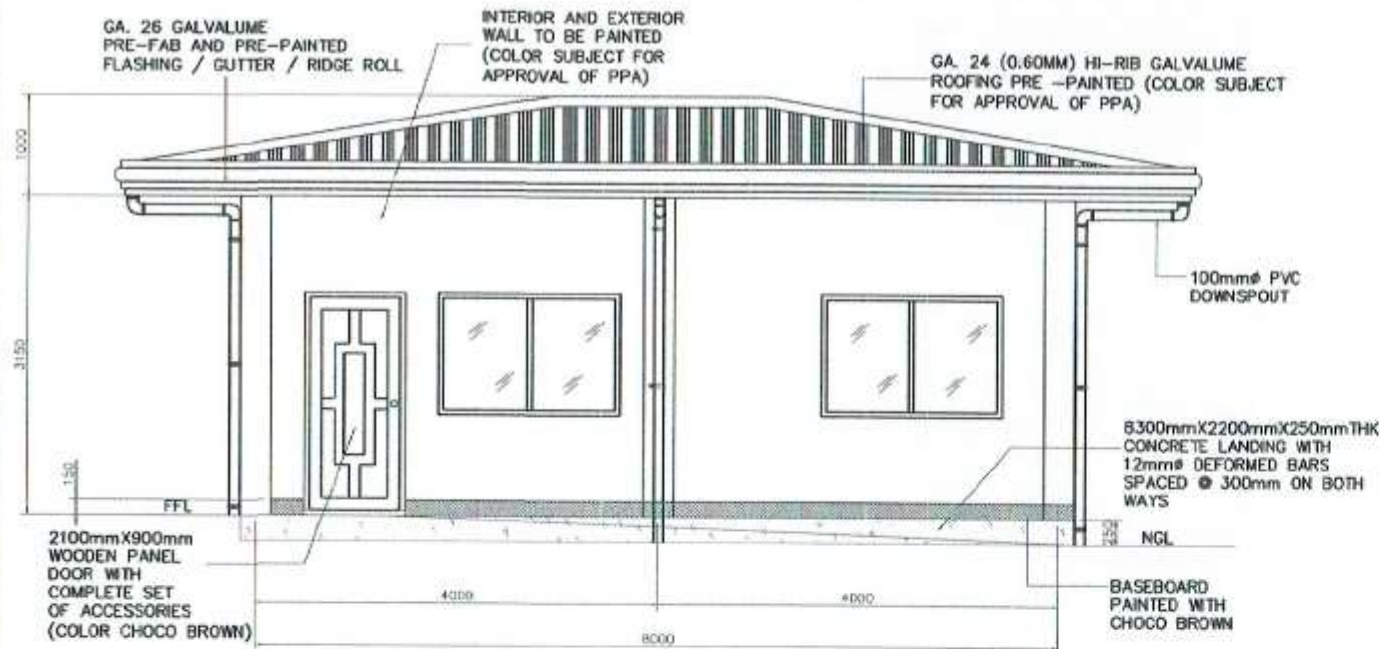
SHEET CONTENT:

1. EXISTING FLOOR PLAN

Date:

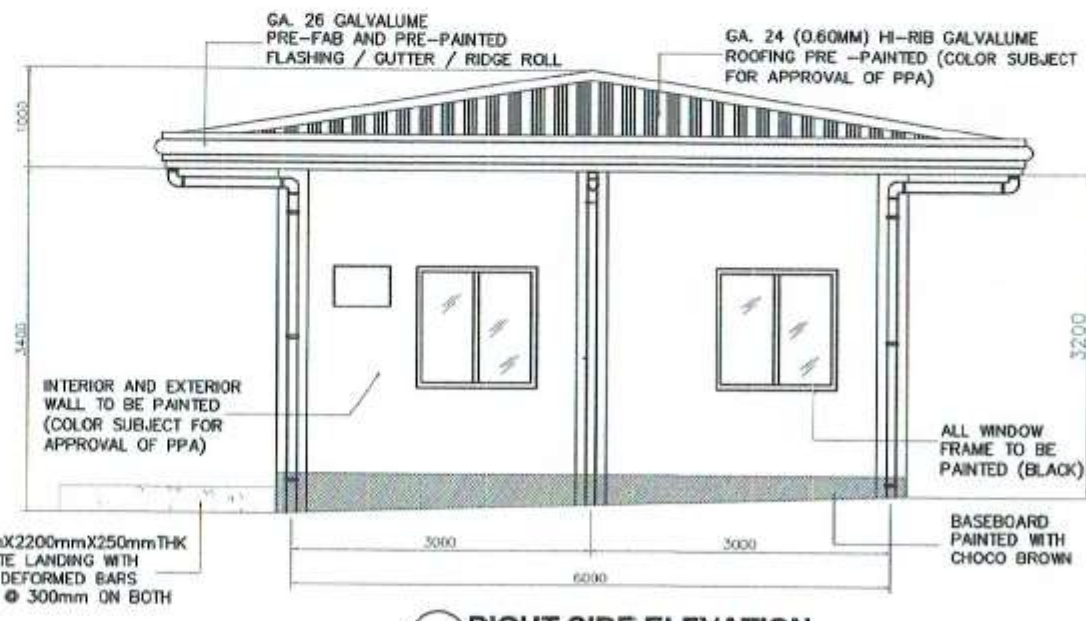
SHEET No.:

5/24



NOTE:

1. USE SKIMCOAT (WHITE) AND USE LATEX PAINT TWO COATS TO ALL CONCRETE STRUCTURES (INTERIOR AND EXTERIOR, INCLUDING SURFACE PREPARATION).
2. USE MARINE EPOXY PRIMER (GRAY) AND USE MARINE EPOXY ENAMEL PAINT TWO COATS TO ALL STEEL STRUCTURES (INCLUDING SURFACE PREPARATION).
3. ALL FIBER CEMENT WALL TO BE PAINTED(1 COAT PRIMER AND 2 COATS BIOFRESH ACRYLIC ODORLESS, ANTIBACTERIAL LATEX PAINT(GLOSS), INCLUDING SURFACE PREPARATION))



RIGHT SIDE ELEVATION
SCALE 1:75

PROJECT TITLE/LOCATION:

REPAIR & MAINTENANCE OF PORT PHYSICAL FACILITIES-2017: 1. REPAIR OF BTO CASHER'S TABLE; 2. REPAIR OF FORMER PCMD FIELD OFFICE, PORT OF GENERAL SANTOS

CAD BY:

JOE CARLO I. SORIANO
Engineering Assistant (J.O)

CHECKED BY:

CHARMAINE DJUNE MANTOYA
Senior Engineer A (J.O)

REVIEWED BY:

MARIA VIVIEN M. TANCO
Acting Principal Engineer

RECOMMENDING APPROVAL:

JAMESON L. LEE
ESD Manager

APPROVED BY:

ATTY. CECIL M. DATAYA
Acting Port Manager

SHEET CONTENT:

1. FRONT ELEVATION
2. RIGHT SIDE ELEVATION

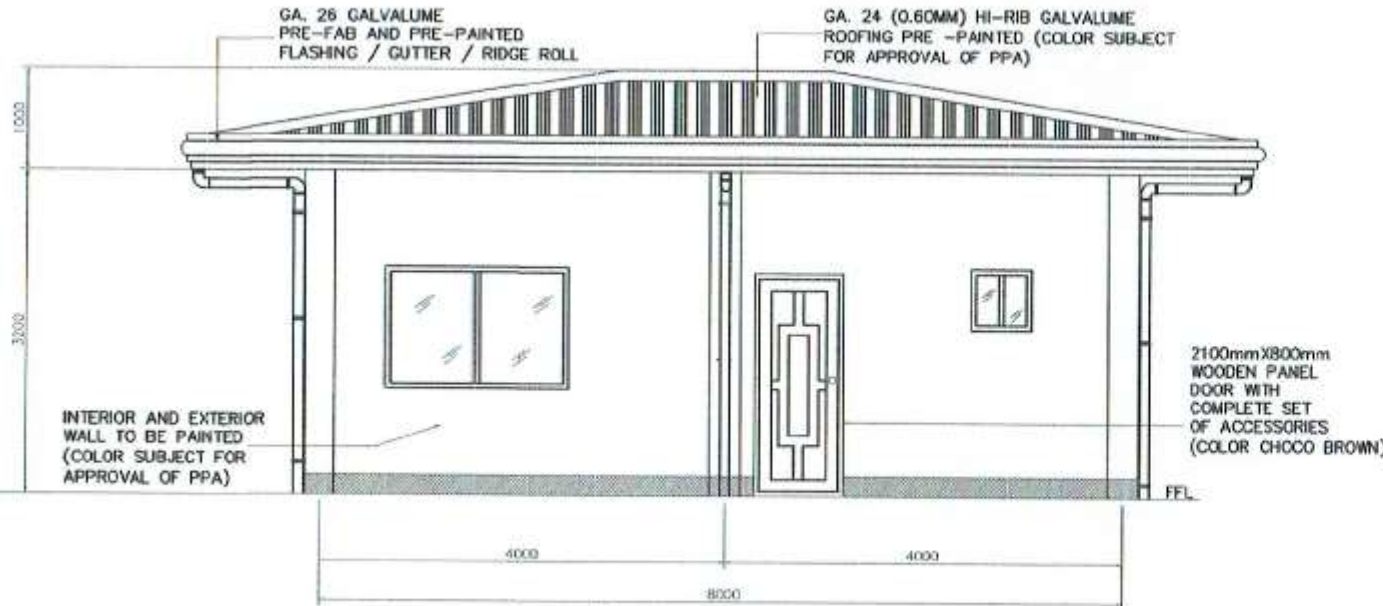
Date:

SHEET No.:

7/24

GA. 26 GALVALUME
PRE-FAB AND PRE-PAINTED
FLASHING / GUTTER / RIDGE ROLL

GA. 24 (0.60MM) HI-RIB GALVALUME
ROOFING PRE -PAINTED (COLOR SUBJECT
FOR APPROVAL OF PPA)



REAR ELEVATION
SCALE 1:75

WINDOW SCHEDULE

MARK	L	H	QUANTITY	DESCRIPTION
W1	1800mm	1200mm	3	6mm THK BRONZE GLASS SLIDING WINDOW ON ANALOK ALUMINUM FRAME WITH ANALOK ALUMINUM SCREEN
W2	1200mm	1200mm	2	
W3	600mm	600mm	2	

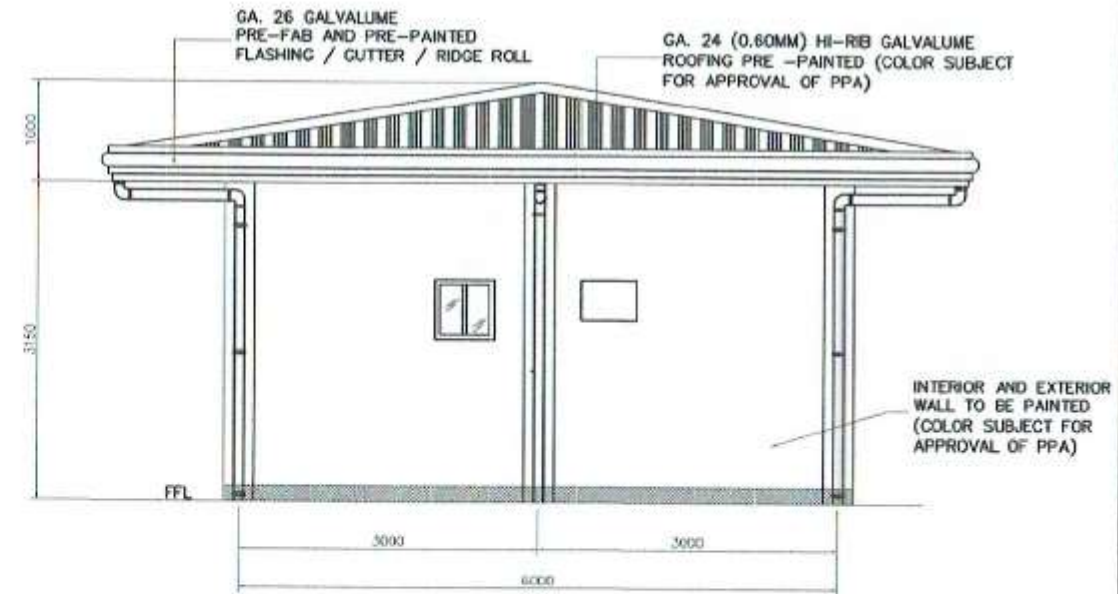
WINDOW SCHEDULE
NOT TO SCALE

NOTE:

1. USE SKIMCOAT (WHITE) AND USE LATEX PAINT TWO COATS TO ALL CONCRETE STRUCTURES (INTERIOR AND EXTERIOR, INCLUDING SURFACE PREPARATION).
2. USE MARINE EPOXY PRIMER (GRAY) AND USE MARINE EPOXY ENAMEL PAINT TWO COATS TO ALL STEEL STRUCTURES (ONCLUDING SURFACE PREPARATION).
3. ALL FIBER CEMENT WALL TO BE PAINTED(1 COAT PRIMER AND 2 COATS BIOFRESH ACRYLIC ODORLESS, ANTIBACTERIAL LATEX PAINT(GLOSS), INCLUDING SURFACE PREPARATION))

GA. 26 GALVALUME
PRE-FAB AND PRE-PAINTED
FLASHING / GUTTER / RIDGE ROLL

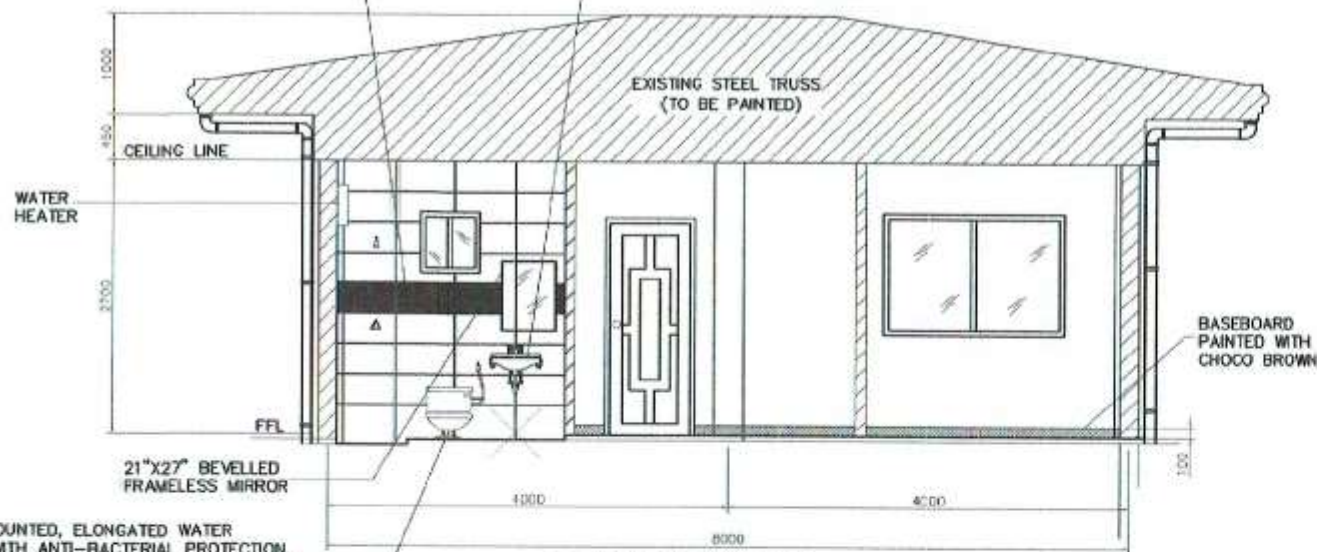
GA. 24 (0.60MM) HI-RIB GALVALUME
ROOFING PRE -PAINTED (COLOR SUBJECT
FOR APPROVAL OF PPA)



LEFT SIDE ELEVATION
SCALE 1:75

300mm X 600mm CERAMIC GLAZE TILES
COLOR PLAIN SUPER WHITE FOR WALL WITH
1 LINE 300mm X 600mm CERAMIC TILES
COLOR PLAIN BLACK AT CENTER AS SHOWN

WALL HUNG TYPE LAVATORY
WITH PULL-UP-TYPE POP-UP
DRAIN WITH ANTI-BACTERIAL
PROTECTION, STAIN RESISTANT,
AND LOW MAINTENANCE



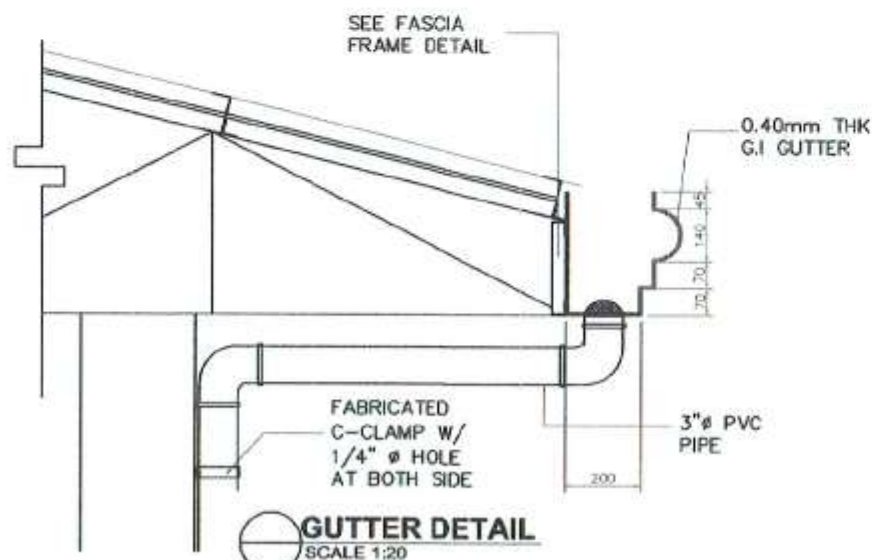
SECTION 'A-A'
SCALE 1:75

DOOR SCHEDULE

MARK	L	H	QUANTITY	DESCRIPTION
D1	900mm	2100mm	2	WOODEN PANEL DOOR WITH COMPLETE SET OF ACCESSORIES
D2	800mm	2100mm	3	WOODEN PANEL DOOR WITH COMPLETE SET OF ACCESSORIES
D3	600mm	2100mm	1	PVC TYPE DOOR WITH COMPLETE SET OF ACCESSORIES

DOOR SCHEDULE
NOT TO SCALE

FLOOR MOUNTED, ELONGATED WATER
CLOSET WITH ANTI-BACTERIAL PROTECTION,
STAIN RESISTANT, AND LOW MAINTENANCE,
LEVER TYPE FLUSH, AND PROVIDE BIDET
HAND SPRAY HOSE



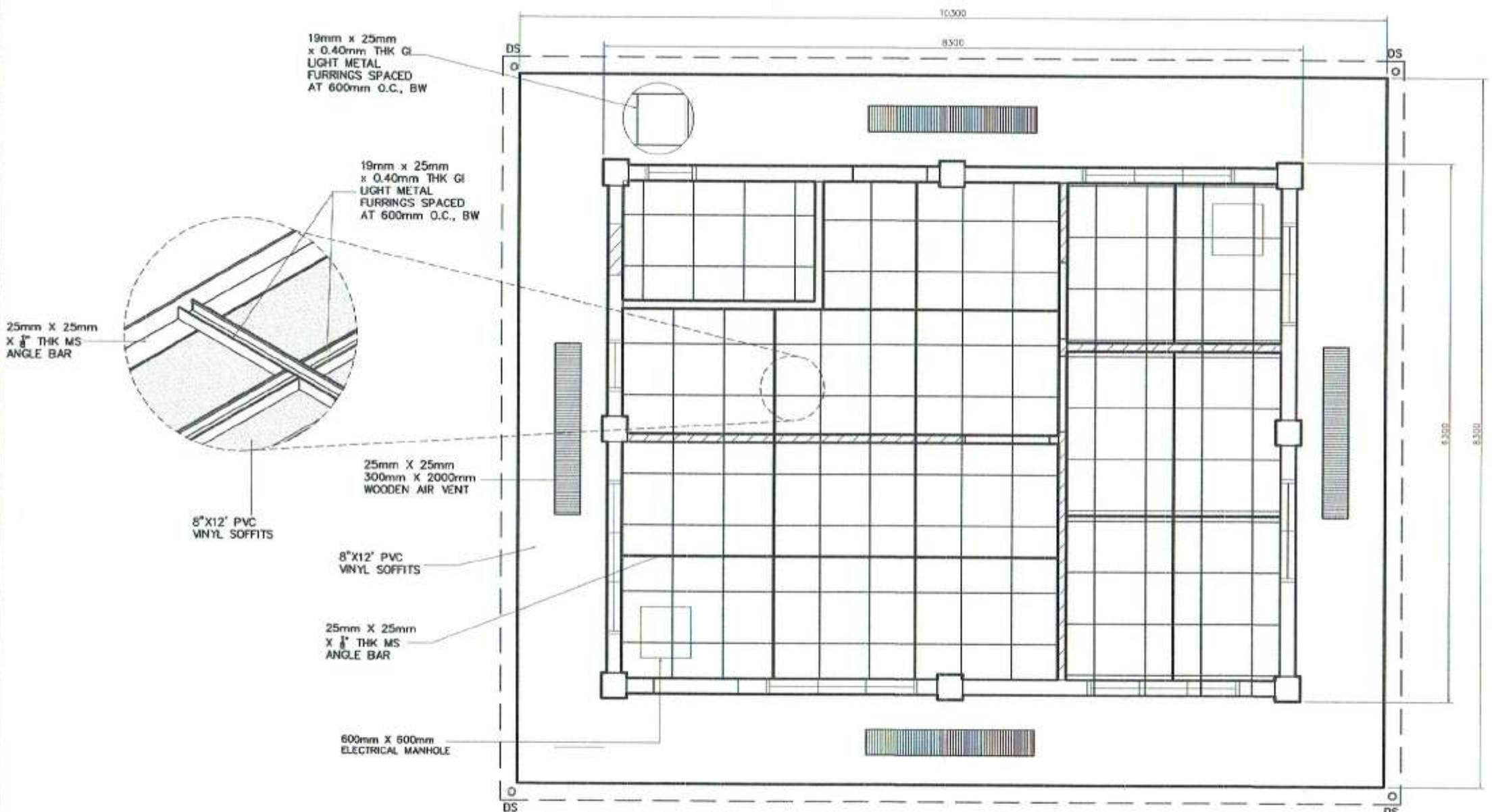
SECTION 'B-B'
SCALE 1:75

300mm X 600mm CERAMIC TILES COLOR
PLAIN SUPER WHITE FOR WALL WITH 1 LINE
300mm X 600mm CERAMIC TILES COLOR
PLAIN BLACK AT CENTER AS SHOWN


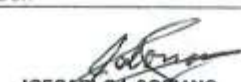



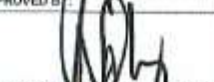
WALL HUNG TYPE LAVATORY WITH
PULL-UP-TYPE POP-UP DRAIN WITH
ANTI-BACTERIAL PROTECTION, STAIN
RESISTANT, AND LOW MAINTENANCE

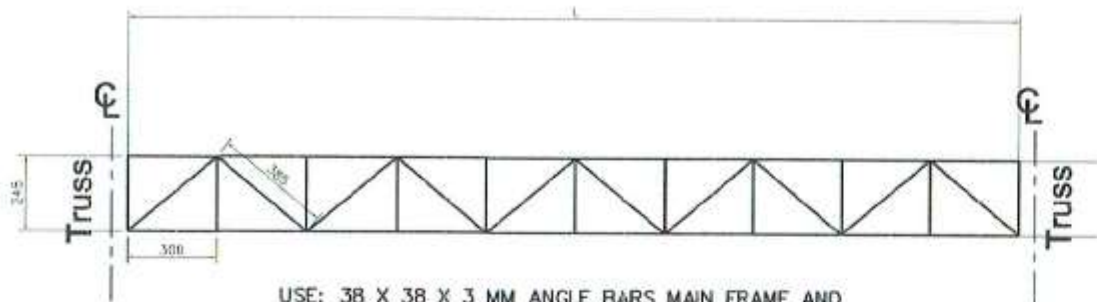
FLOOR MOUNTED, ELONGATED WATER
CLOSET WITH ANTI-BACTERIAL PROTECTION,
STAIN RESISTANT, AND LOW MAINTENANCE,
LEVER TYPE FLUSH, AND PROVIDE BIDET
HAND SPRAY HOSE

SEE SINK DETAIL



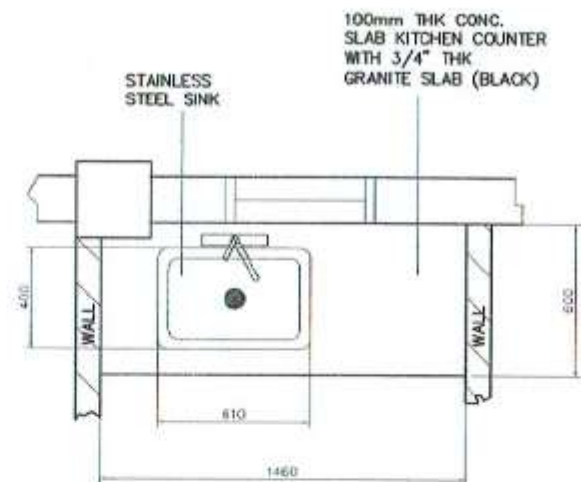

REFLECTED CEILING LAYOUT
 SCALE 1:60

 <p> PHILIPPINE PORTS AUTHORITY PMO - SOCSARGEN </p>	PROJECT TITLE/LOCATION: REPAIR & MAINTENANCE OF PORT PHYSICAL FACILITIES-2017: 1. REPAIR OF BTO CASHIER'S TABLE; 2. REPAIR OF FORMER FCMD FIELD OFFICE, PORT OF GENERAL SANTOS	CAD BY:  JOE CABLOT SORIANO Engineering Assistant (J.O)	CHECKED BY:  CHARMAINE D. JUNE MANTOYA Senior Engineer A (J.O)	REVIEWED BY:  MARIA VIVIEN M. TANCO Acting Principal Engineer	RECOMMENDING APPROVAL:  JAMESON L. LEE BSD Manager	APPROVED BY:  ATTY. CESAR M. DATAYA Acting Port Manager	SHEET CONTENT: 1. REFLECTED CEILING LAYOUT	Date: SHEET No.: <div>10/24</div>
--	---	--	---	--	---	--	---	---

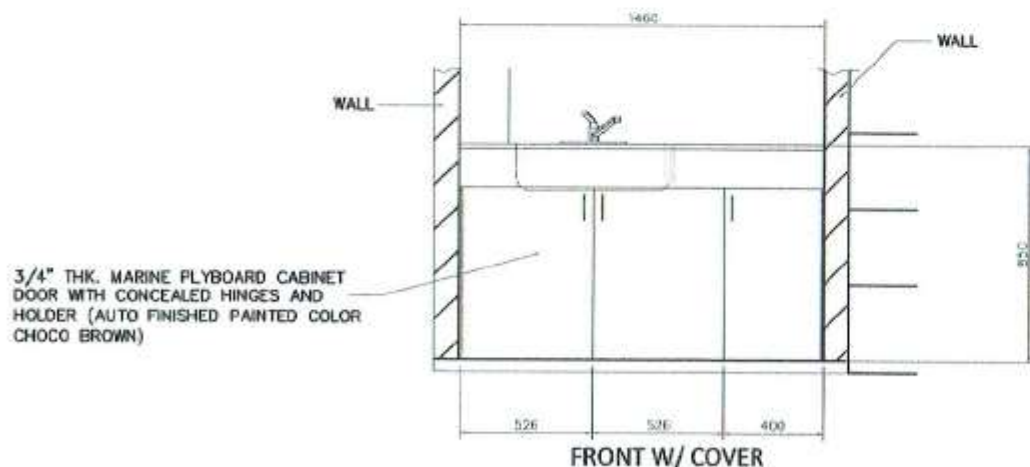


USE: 38 X 38 X 3 MM ANGLE BARS MAIN FRAME AND WEB MEMBERS, FULL WELDED ON THE JOINTS

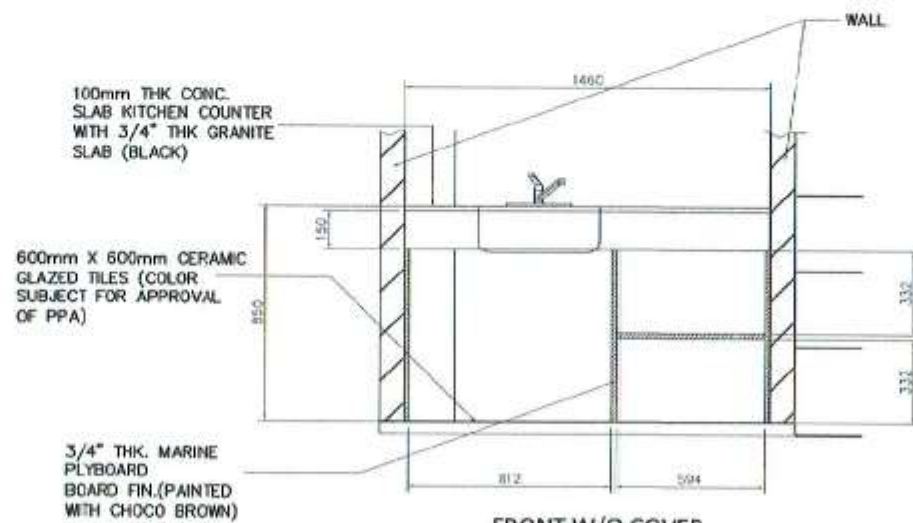
FASCIA FRAME DETAIL
SCALE 1:25



TOP VIEW



FRONT W/ COVER



FRONT W/O COVER

KITCHEN SINK DETAIL
SCALE 1:30

NOTE:

1. USE 3.5mm² THW STRANDED WIRE FOR BRANCH LINE.
2. USE 1/2"Ø PVC ELECTRICAL CONDUIT PIPE

LEGEND:



2-40W LOUVER TYPE
FLUORESCENT
LAMP, RECESSED TYPE



LED LIGHT W/ HOUSING, 9
WATTS (800 LUMENS)



PANEL BOARD



OVAL BLACK BULKHEAD LIGHT
100mm X 100mm X 210mm
W/ LED SPIRAL 15W ES WARM WHITE

⤵ DENOTES AS
CIRCUIT HOMERUN



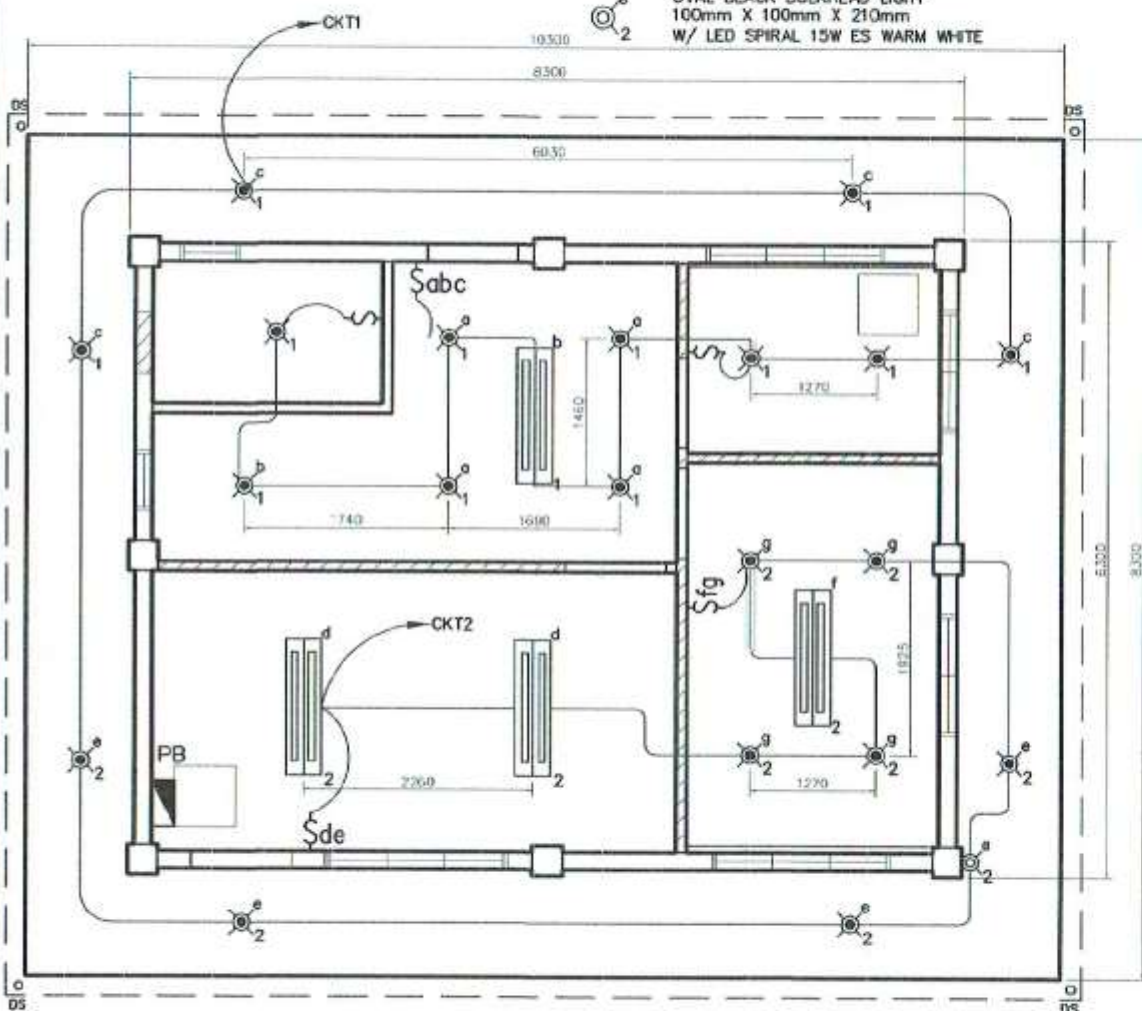
\$ef 2 GANG SWITCH



\$ 1 GANG SWITCH

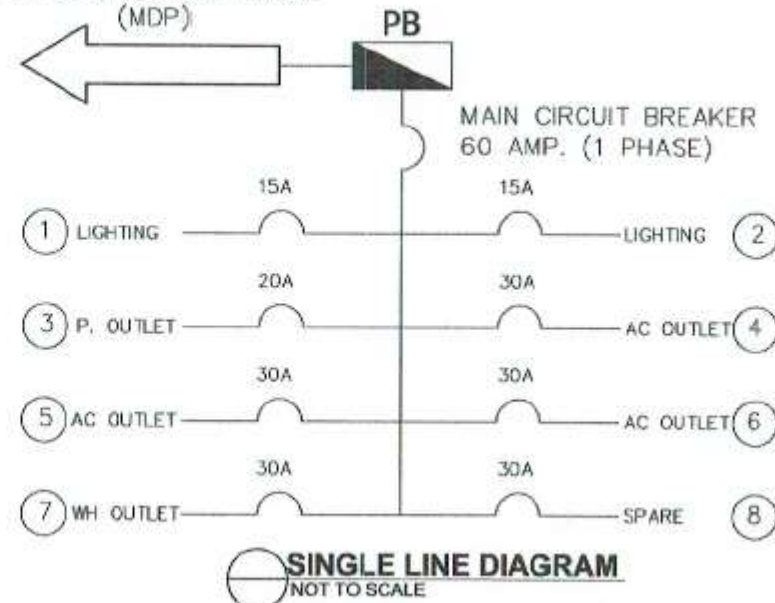


\$abc 3 GANG SWITCH



LIGHTING LAYOUT
SCALE 1:75

TAPPED TO EXISTING
MAIN DISTRIBUTION PANEL
(MDP)

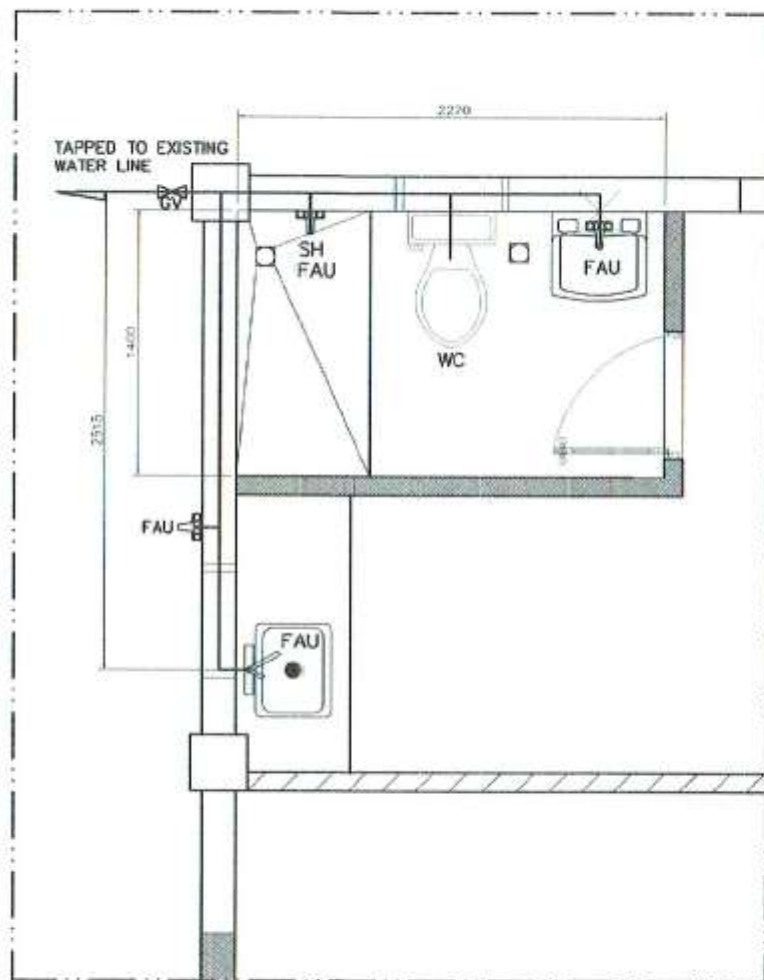


GENERAL NOTES:

1. THE ELECTRICAL INSTALLATION HEREIN SHALL BE DONE IN ACCORDANCE WITH THE PROVISIONS OF THE LATEST EDITION OF THE PHILIPPINE ELECTRICAL CODE, THE EXISTING LOCAL ORDINANCES, REQUIREMENTS OF THE LOCAL POWER COMPANY AND RULES AND REGULATIONS OF THE LOCAL ENFORCING AUTHORITY. THE CONTRACTOR SHALL BE RESPONSIBLE FOR ALL INCIDENTAL EXPENSES IN SECURING LOCAL GOVERNMENT AND SOCOTECO II'S REQUIREMENTS.
2. ALL 20 AMPERE CIRCUIT HOMERUNS TO PANEL BOARD MORE THAN 30.5M (100 FT) IN LENGTH SHALL BE 5.50 SQ.mm. UNLESS OTHERWISE SPECIFIED.
3. ALL SERVICE ENTRANCE EQUIPMENT SHALL BE PROPERLY GROUNDED IN ACCORDANCE WITH THE REQUIREMENTS OF THE PHILIPPINE ELECTRICAL CODE.
4. ALL MATERIALS SHALL BE NEW AND OF THE APPROVED TYPE.
5. ALL ELECTRICAL INSTALLATION SHALL BE UNDER THE DIRECT SUPERVISION OF A LICENSED PROFESSIONAL ELECTRICAL ENGINEER.

LEGEND:

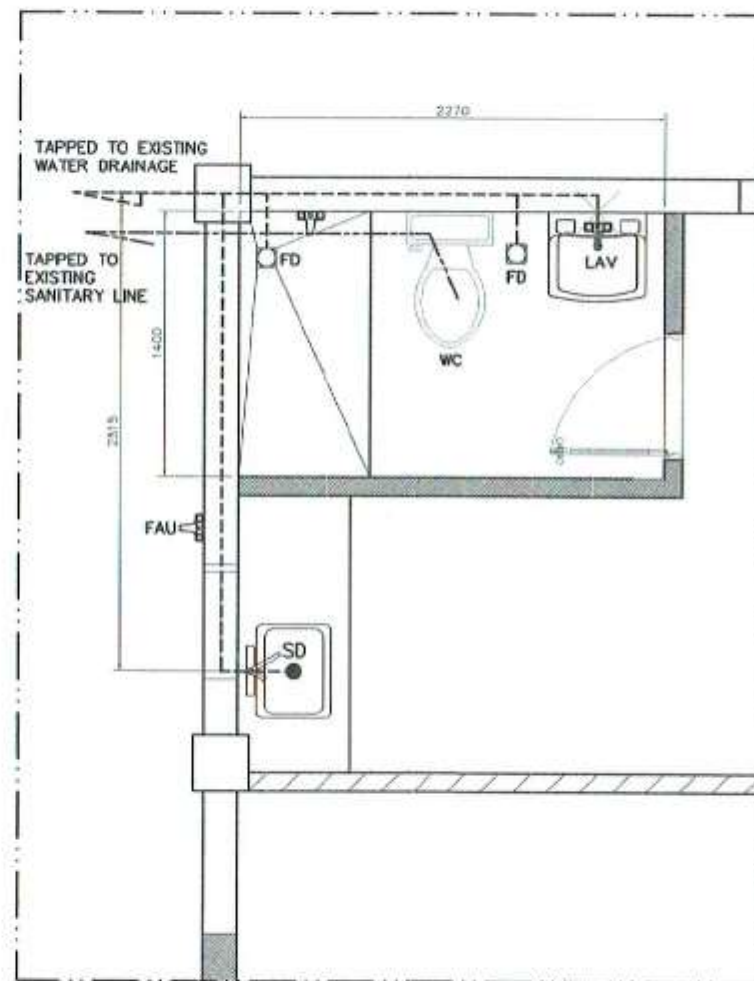
- SH - SHOWER
WC - WATER CLOSET
FAU - FAUCET
- 25mm# PPR PIPE (WATER LINE)
GV - GATE VALVE



WATER PIPING LAYOUT
SCALE 1:40

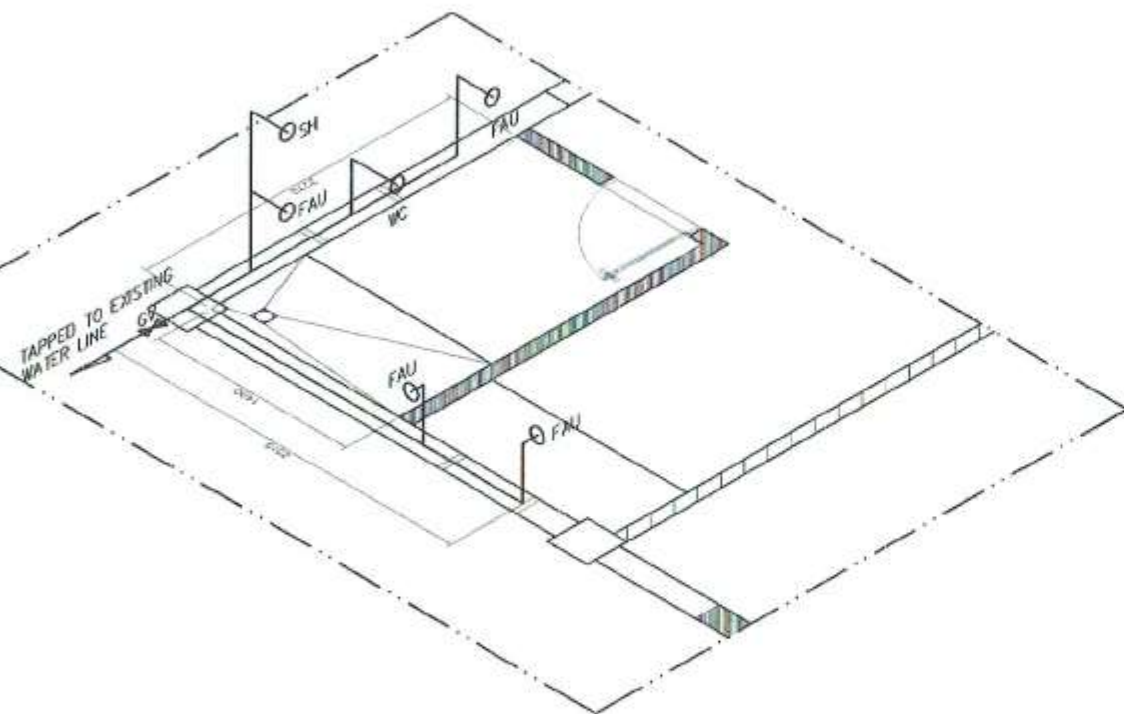
LEGEND:

- FD - FLOOR DRAIN
WC - WATER CLOSET
LAV - LAVATORY
- 100mm# UPVC PIPE S1000 (DRAINAGE LINE)
- 100mm# UPVC PIPE S1000 (SANITARY LINE)



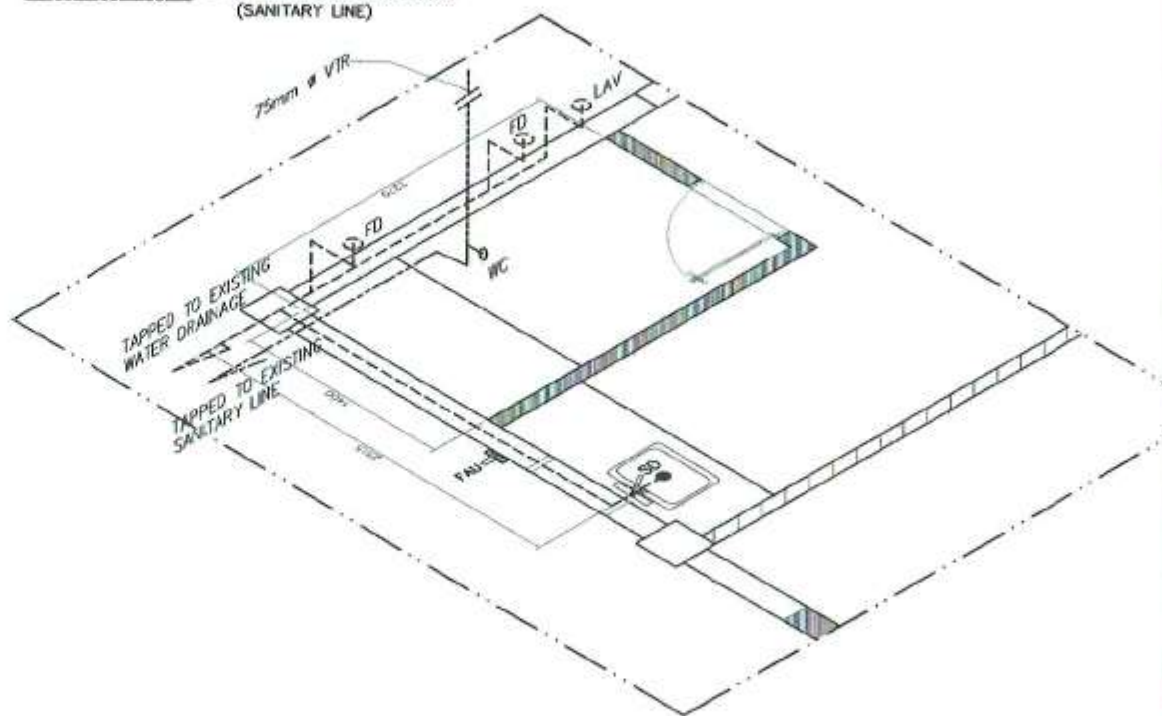
DRAINAGE & SANITARY PIPING LAYOUT
SCALE 1:40

SH - SHOWER
WC - WATER CLOSET
FAU - FAUCET
____ - 25mm ϕ PPR PIPE
(WATER LINE)

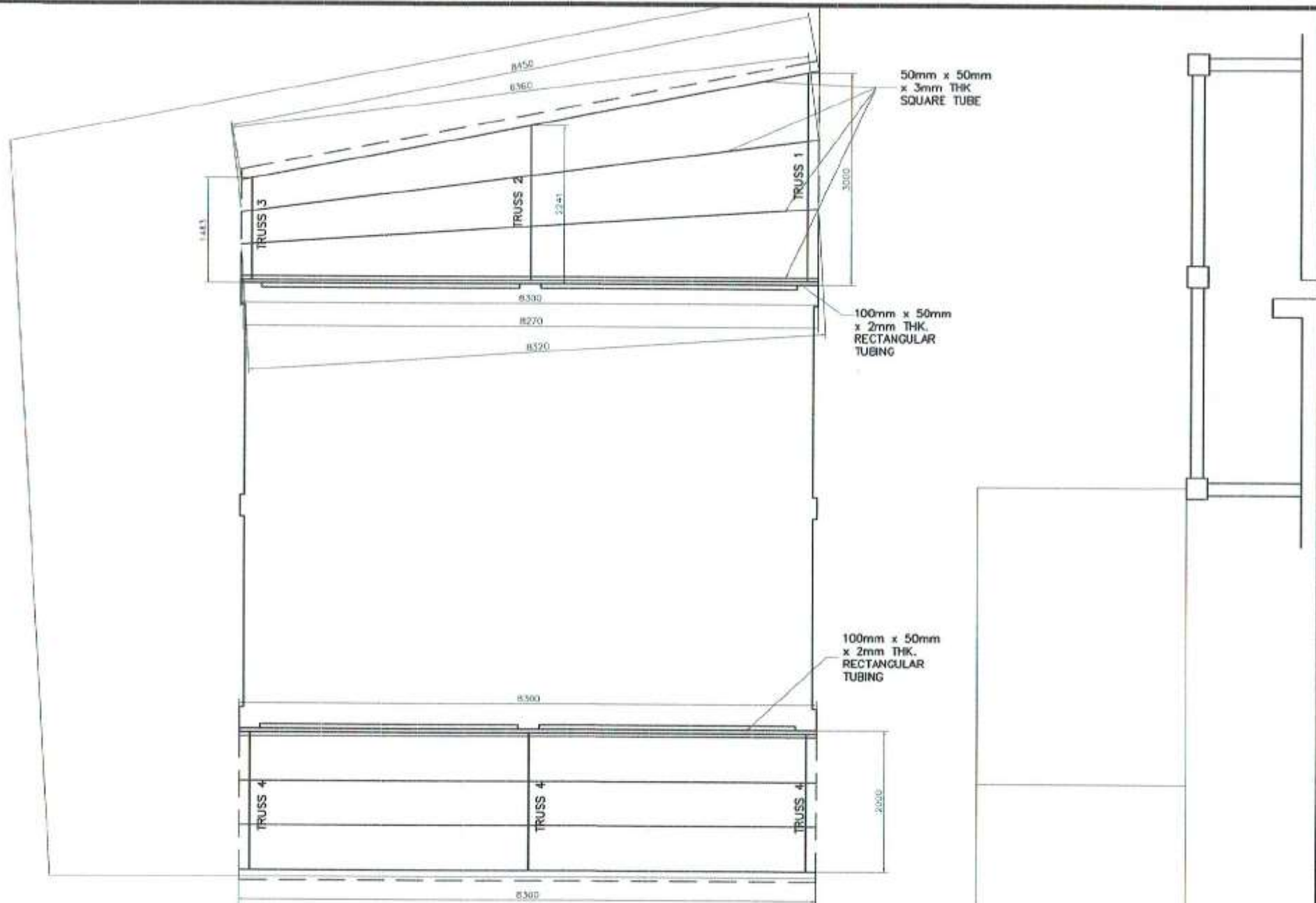


WATER PIPING ISOMETRIC
NOT TO SCALE

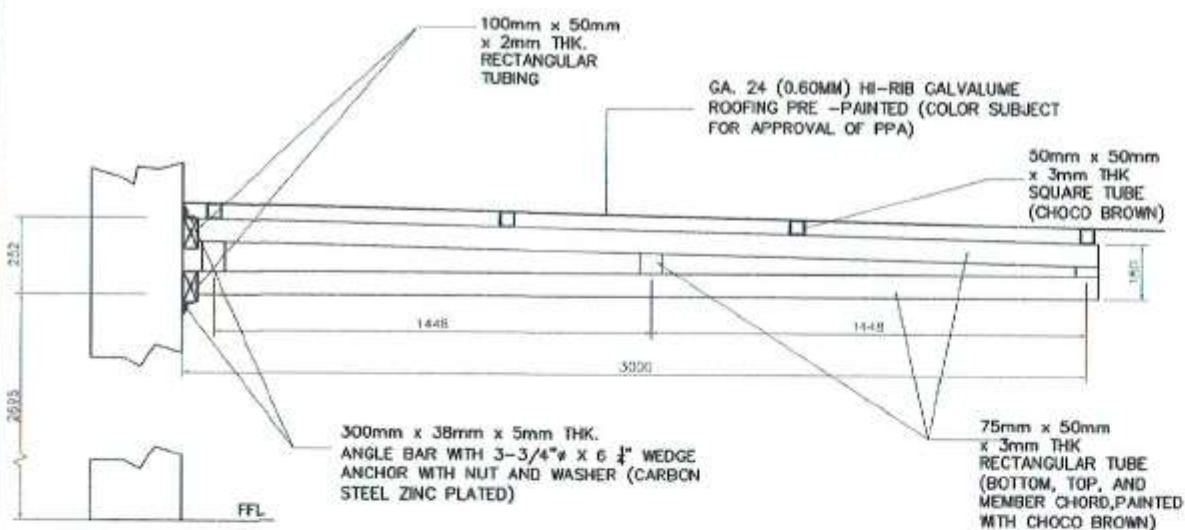
FD - FLOOR DRAIN
WC - WATER CLOSET
LAY - LAVATORY
----- - 100mmØ UPVC PIPE
S1000 (DRAINAGE LINE)
----- - 100mmØ UPVC PIPE S1000
(SANITARY LINE)



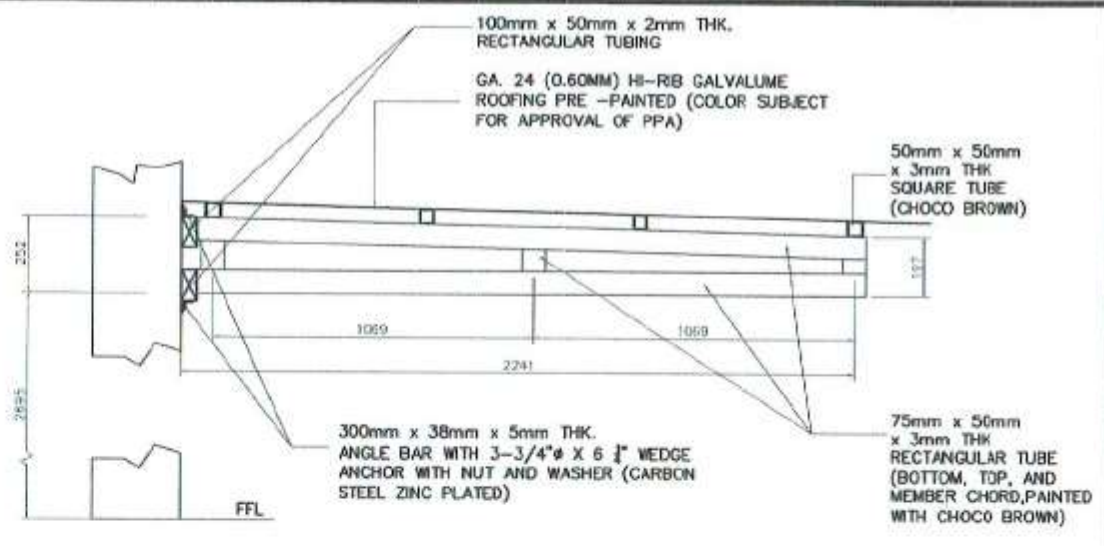
DRAINAGE & SANITARY PIPING ISOMETRIC
NOT TO SCALE



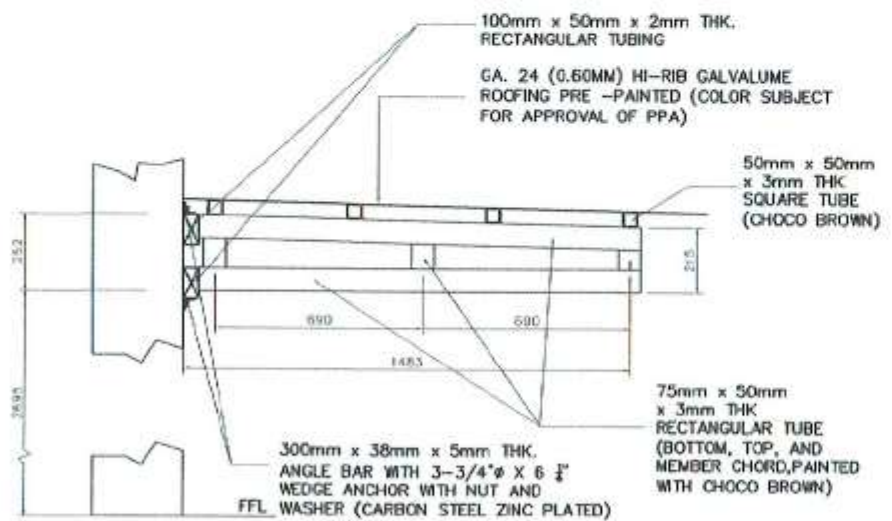
CANOPY LAYOUT
SCALE 1:75



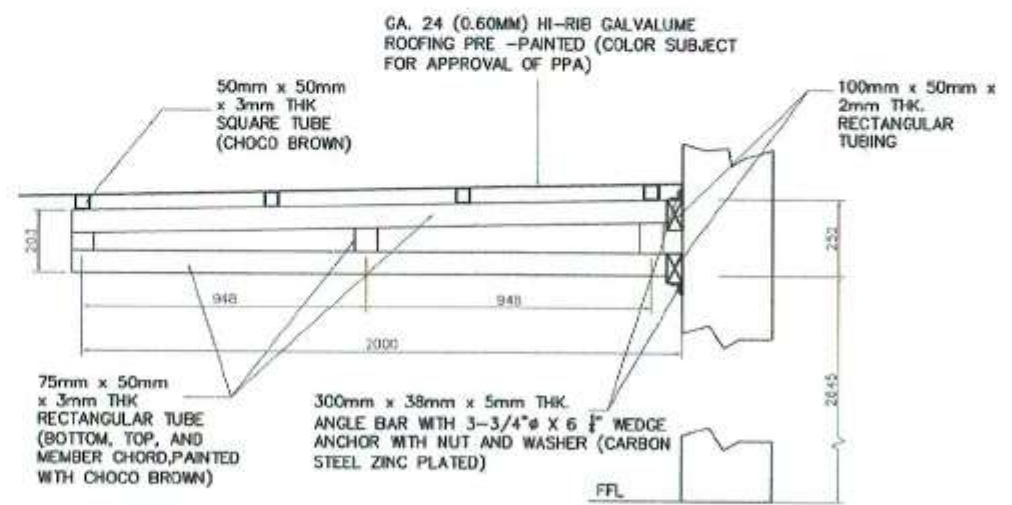
TRUSS 1 DETAIL
SCALE 1:25



TRUSS 2 DETAIL
SCALE 1:25



TRUSS 3 DETAIL
SCALE 1:25

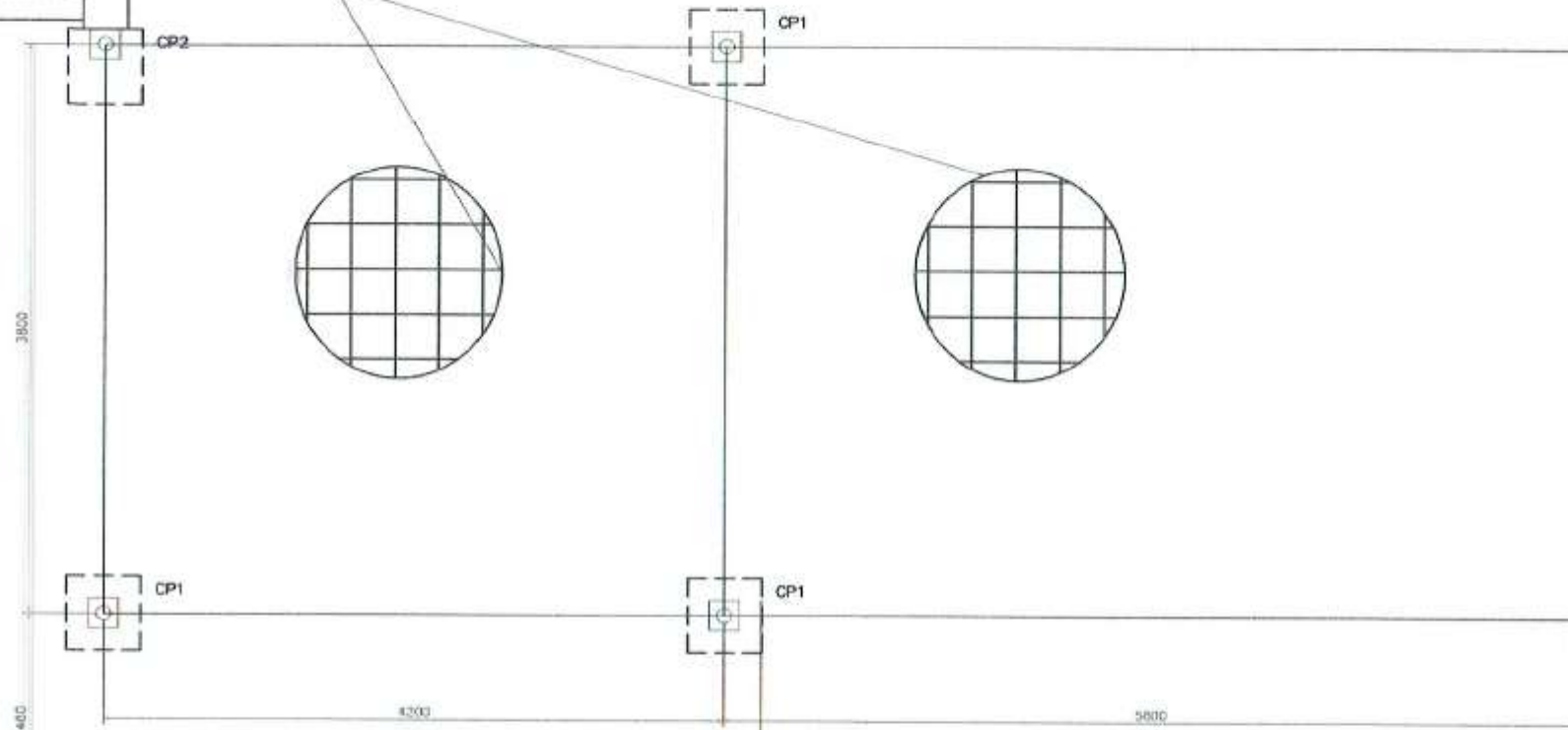


TRUSS 4 DETAIL
SCALE 1:25

	PROJECT TITLE/LOCATION: REPAIR & MAINTENANCE OF PORT PHYSICAL FACILITIES-2017: 1. REPAIR OF BTO CASHIER'S TABLE; 2. REPAIR OF FORMER FCMD FIELD OFFICE, PORT OF GENERAL SANTOS	CAD BY: JOE CARLO I. SORIANO Engineering Assistant (J.O)	CHECKED BY: CHARMAINE D. JUNE MANTOYA Senior Engineer A (J.O)	REVIEWED BY: MARIA VIVIEN M. TANCO Acting Principal Engineer	RECOMMENDING APPROVAL: JAMESON L. LEE ESD Manager	APPROVED BY: ATTY. CESAR M. DATAYA Acting Port Manager	SHEET CONTENT: 1. TRUSS DETAIL	Date: SHEET No.: 17/24
--	--	---	--	---	--	---	--	--

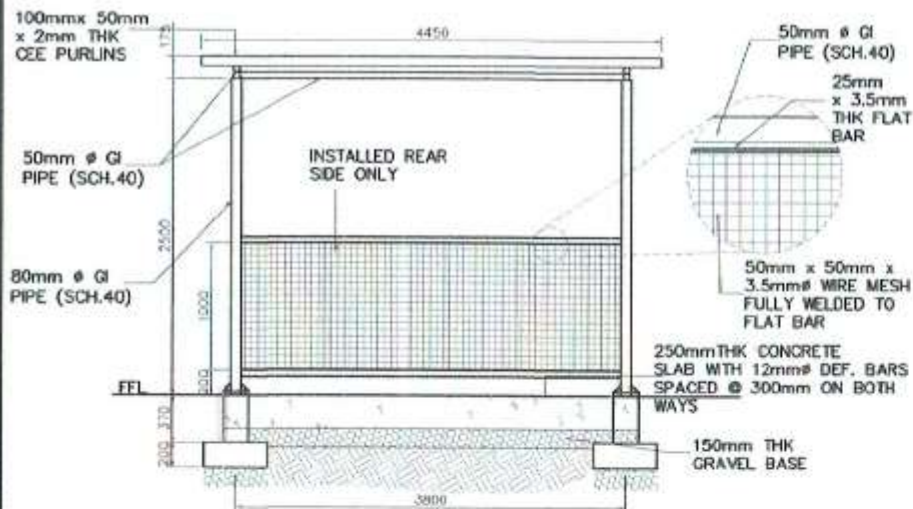
FORMER PPD
OFFICE

250mmTHK CONCRETE SLAB WITH
12mmØ DEFORMED BARS
SPACED @ 300mm ON BOTH
WAYS

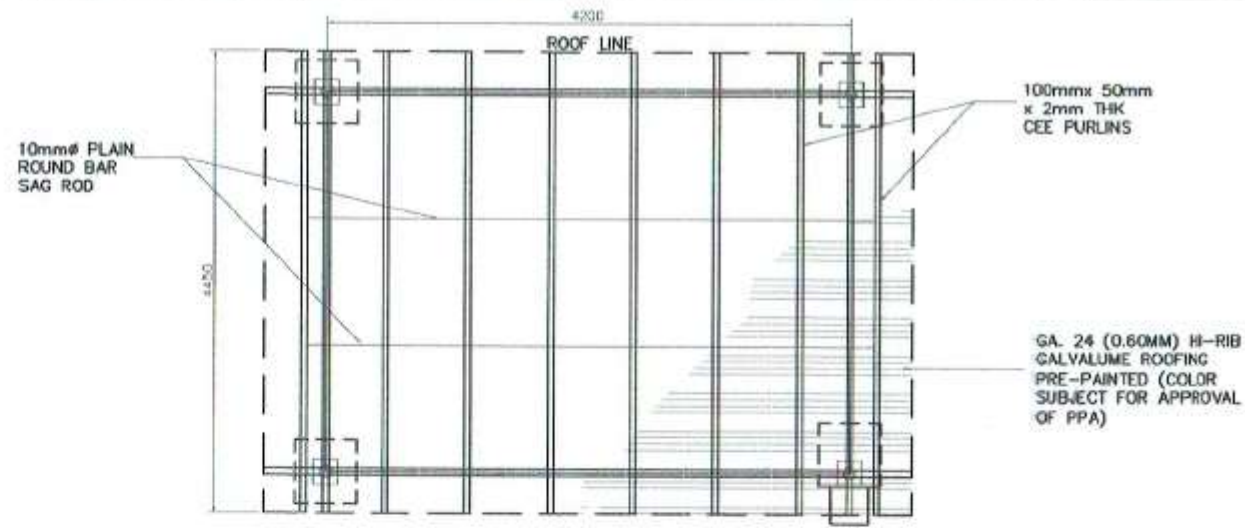


FORMER FCMD
OFFICE

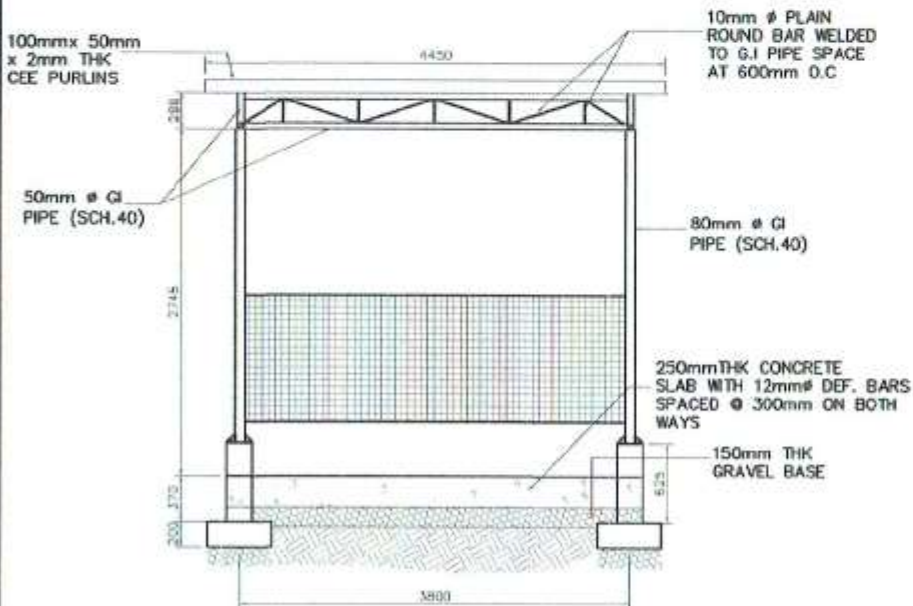
PARKING AREA LAYOUT
SCALE 1:50



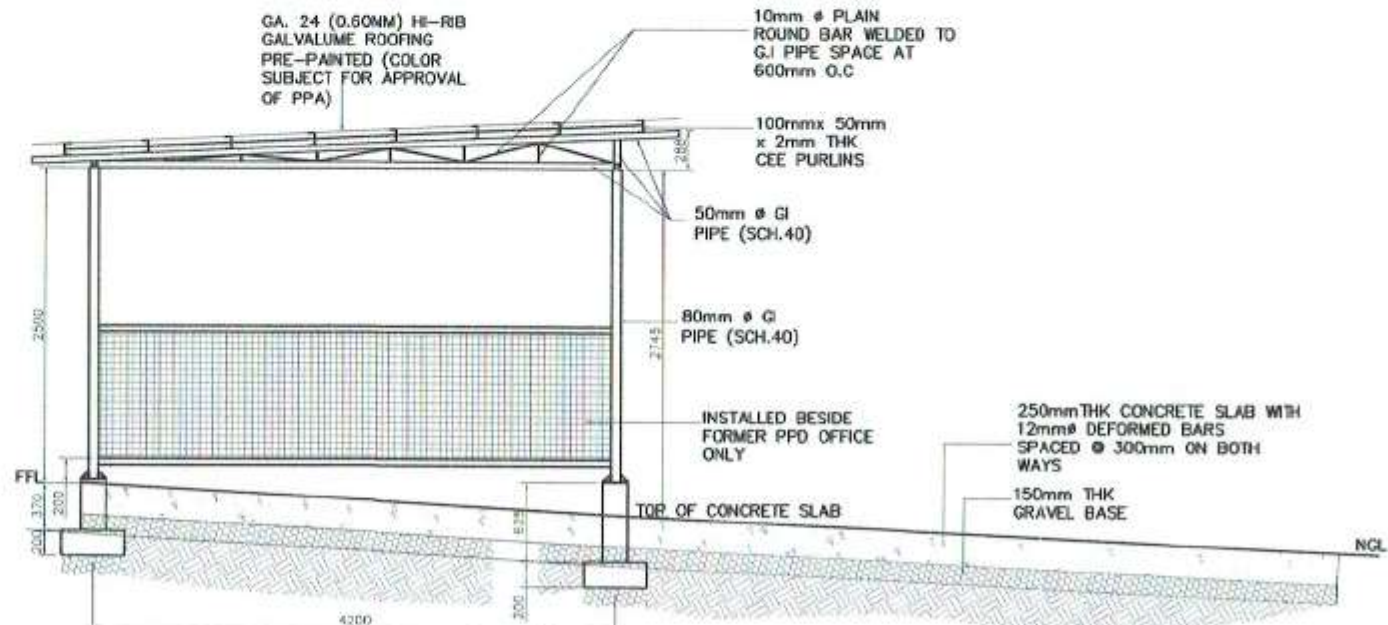
REAR ELEVATION
SCALE 1:60



ROOF FRAMING PLAN
SCALE 1:60

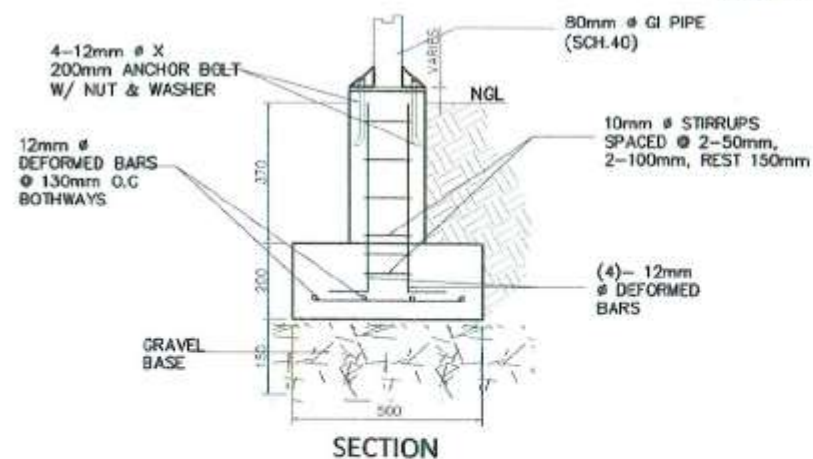
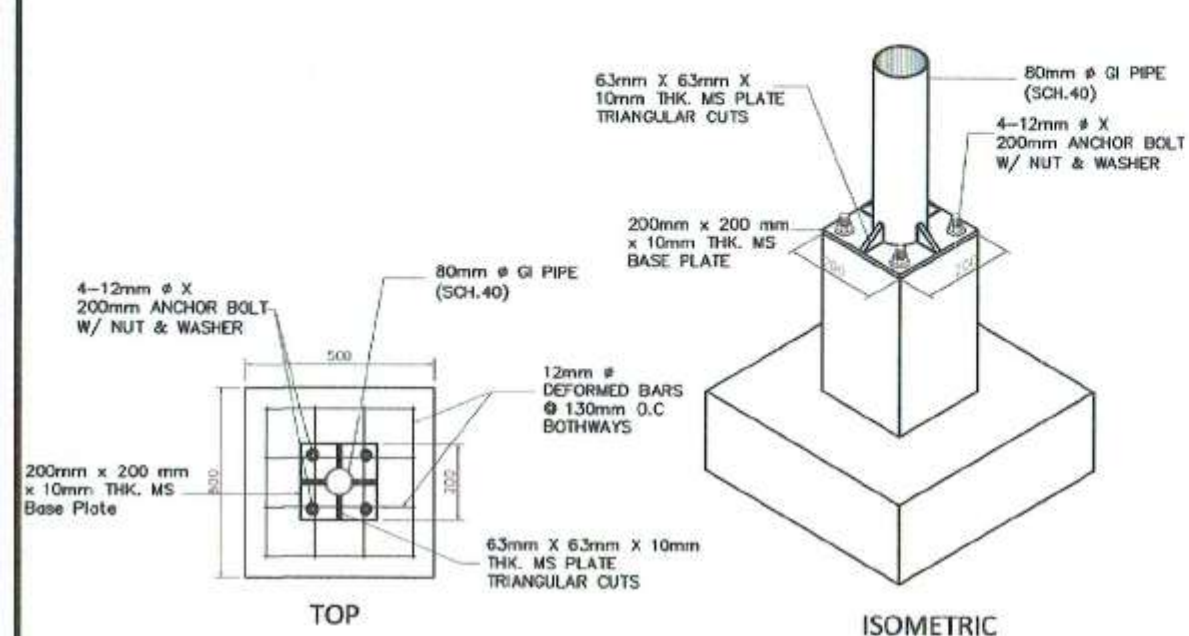


FRONT ELEVATION
SCALE 1:60

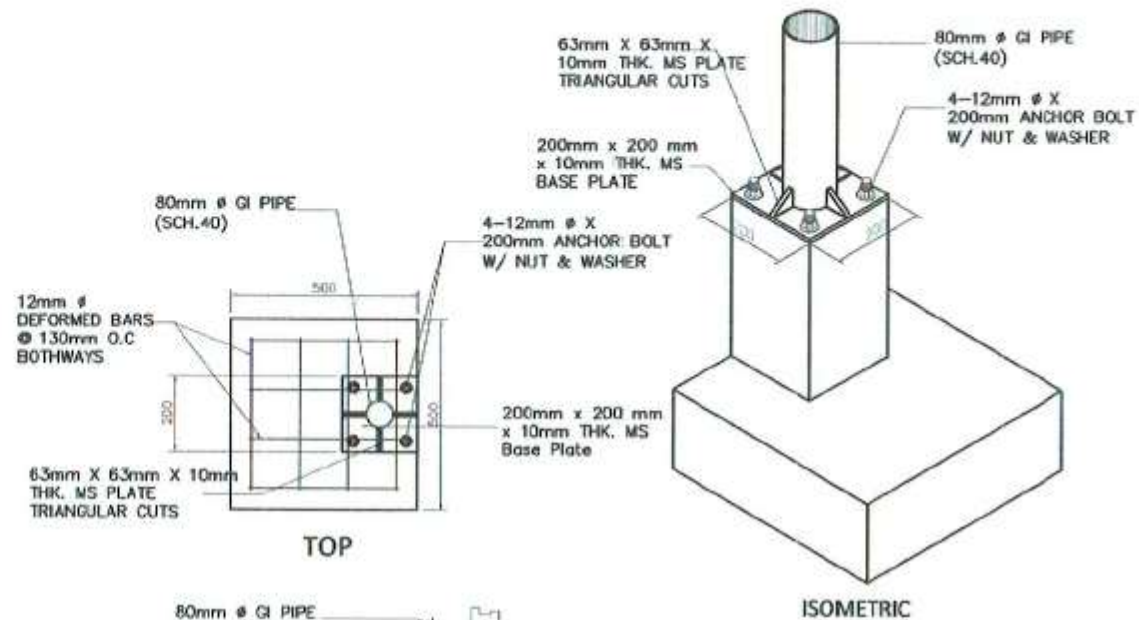


SIDE ELEVATION
SCALE 1:60

	PROJECT TITLE/LOCATION: REPAIR & MAINTENANCE OF PORT PHYSICAL FACILITIES-2017: 1. REPAIR OF BTO CASHIER'S TABLE; 2. REPAIR OF FORMER FGMD FIELD OFFICE, PORT OF GENERAL SANTOS	CAD BY: JOE CARLO O. SORIANO Engineering Assistant (J.O)	CHECKED BY: CHARMAINE DUANE MANTOYA Senior Engineer A (J.O)	REVIEWED BY: MARIA VIVIEN M. TANCO Acting Principal Engineer	RECOMMENDING APPROVAL: JAMESON L. LEE ESD Manager	APPROVED BY: ATTY. G. S. M. DATAYA Acting Port Manager	SHEET CONTENT: 1. FRONT ELEVATION 2. REAR ELEVATION 3. SIDE ELEVATION 4. ROOF FRAMING PLAN	Date: SHEET No.: 19/24
--	--	---	--	---	--	---	---	---

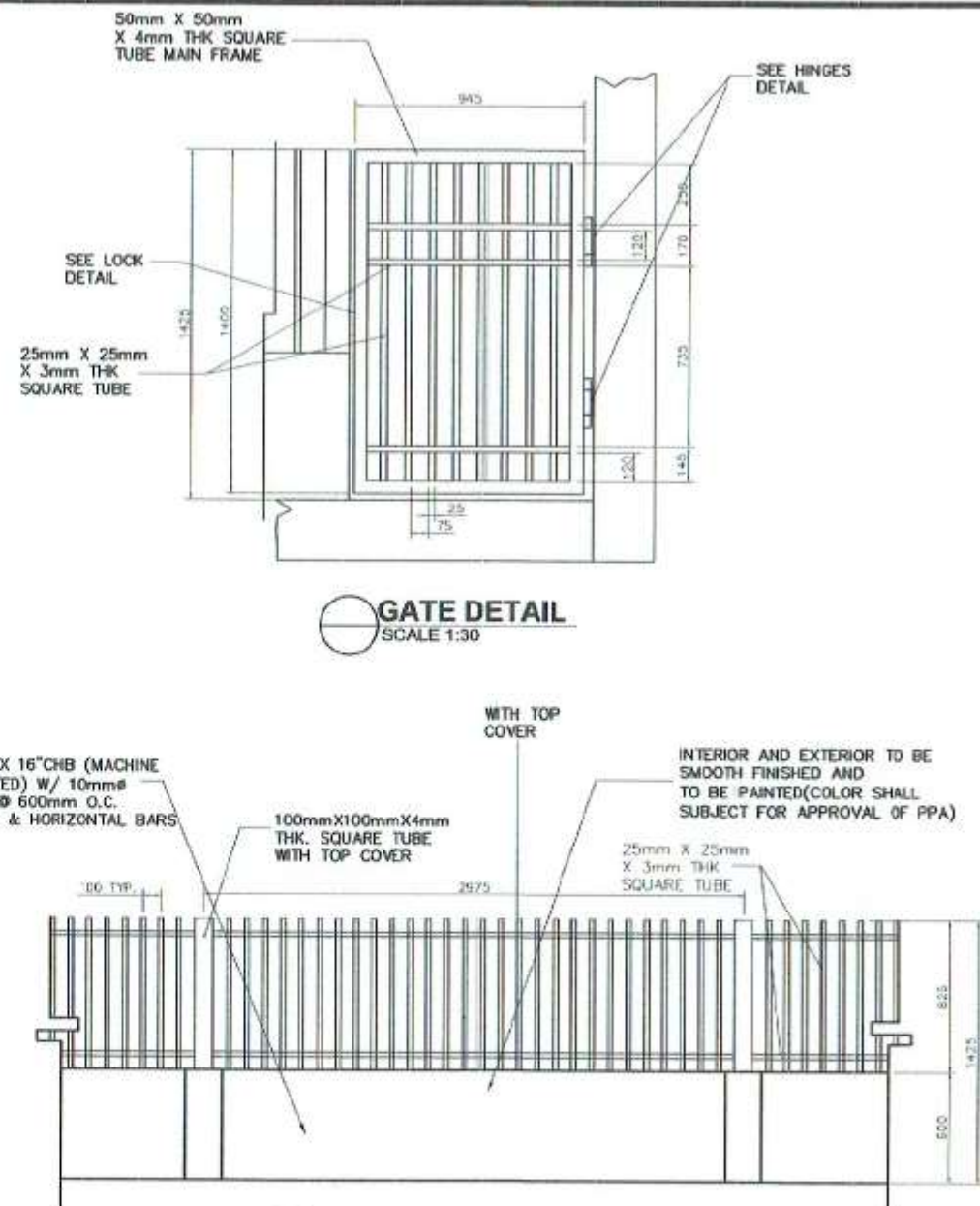
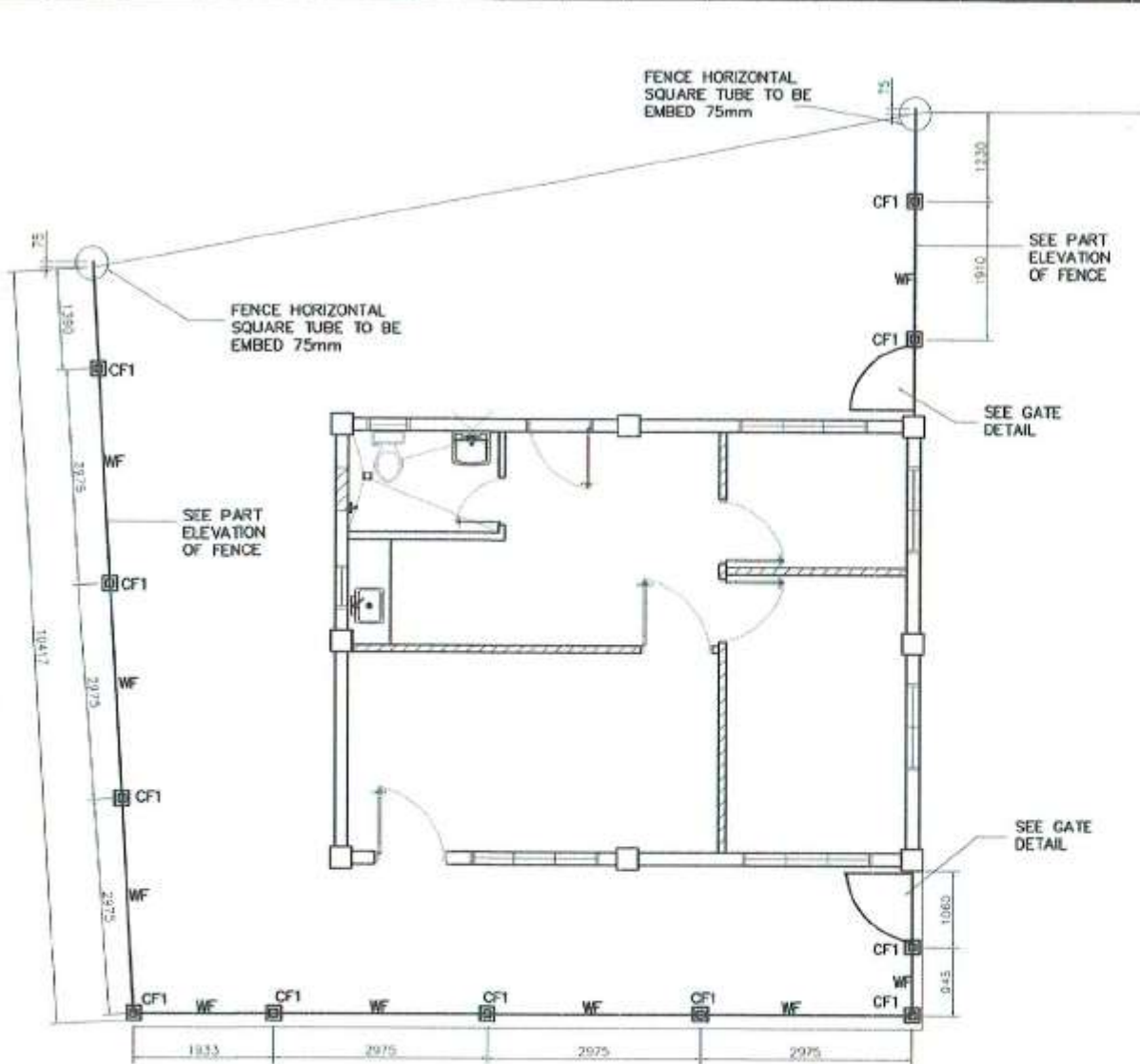


CONCRETE PEDESTAL 1 (CP1) DETAIL
SCALE 1:20

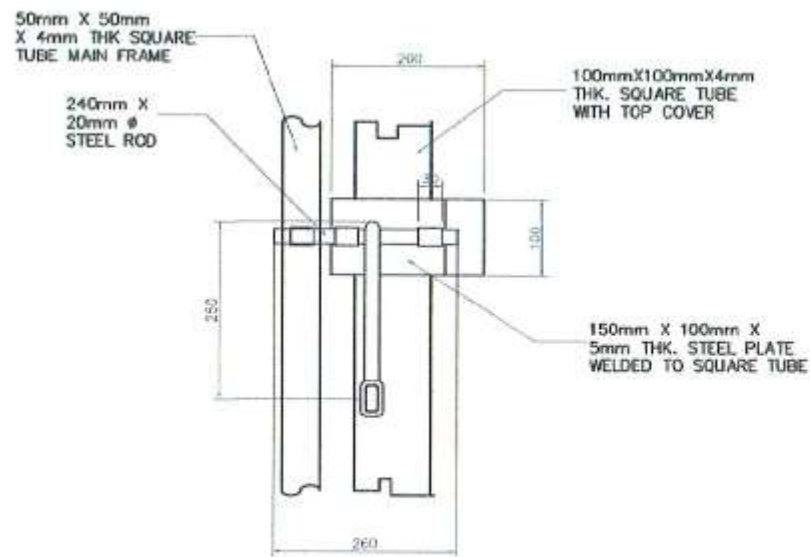


CONCRETE PEDESTAL 2 (CP2) DETAIL
SCALE 1:20

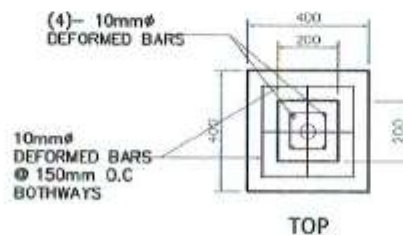
<p>Republic of the Philippines PHILIPPINE PORTS AUTHORITY PMO - SOCSARGEN</p>	<p>PROJECT TITLE/LOCATION: REPAIR & MAINTENANCE OF PORT PHYSICAL FACILITIES 2017: 1. REPAIR OF BTO CASHIER'S TABLE; 2. REPAIR OF FORMER FICMD FIELD OFFICE, PORT OF GENERAL SANTOS</p>	<p>CAD BY: JOE CARLO I. SORIANO Engineering Assistant (J.O)</p>	<p>CHECKED BY: CHARMAINE D. JUNE MANTOYA Senior Engineer A (J.O)</p>	<p>REVIEWED BY: MARIA VIVIEN M. TANCO Acting Principal Engineer</p>	<p>RECOMMENDING APPROVAL: JAMESON L. LEE ESD Manager</p>	<p>APPROVED BY: ATTY. CESAR M. CATAYA Acting Port Manager</p>	<p>SHEET CONTENT: 1. CONCRETE PEDESTAL DETAIL</p> <p>Date: 20/24</p>
--	--	--	---	--	---	--	--



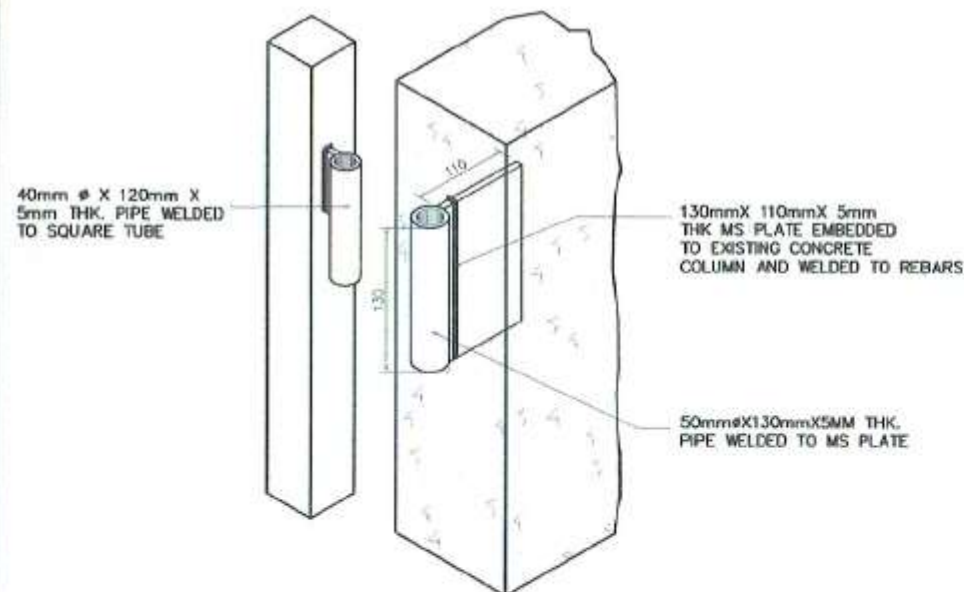
PROJECT TITLE/LOCATION: REPAIR & MAINTENANCE OF PORT PHYSICAL FACILITIES-2017: 1. REPAIR OF BTO CASHIER'S TABLE; 2. REPAIR OF FORMER FCMD FIELD OFFICE, PORT OF GENERAL SANTOS	DRAWN BY: JOE CARLO I. SORIANO Engineering Assistant (J.O)	CHECKED BY: CHARMAINE D. JUNE MANTOYA Senior Engineer A (J.O)	REVIEWED BY: MARIA VIVIEN M. TANCO Acting Principal Engineer	RECOMMENDING APPROVAL: JAMESON L. LEE ESD Manager	APPROVED BY: ATTY. CESAR M. DANAYA Acting Port Manager	SHEET CONTENT: 1. FENCE LAYOUT 2. GATE DETAIL 3. PART ELEVATION OF FENCE	Date: SHEET No.: 21/24
---	--	---	--	---	--	---	-------------------------------------



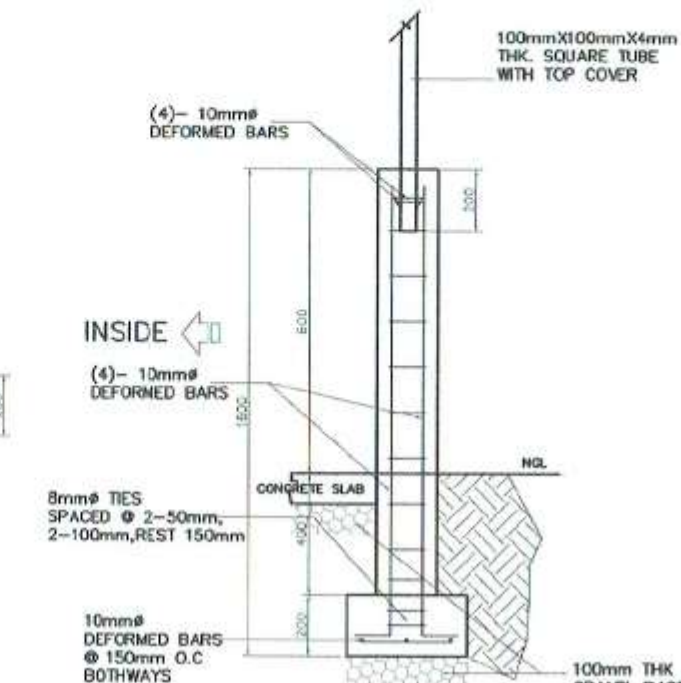
LOCK DETAIL
SCALE 1:10



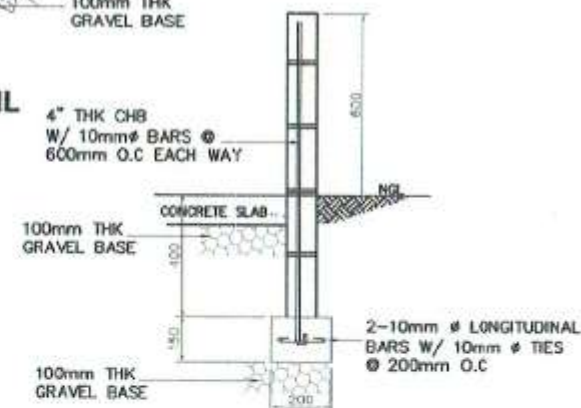
TOP



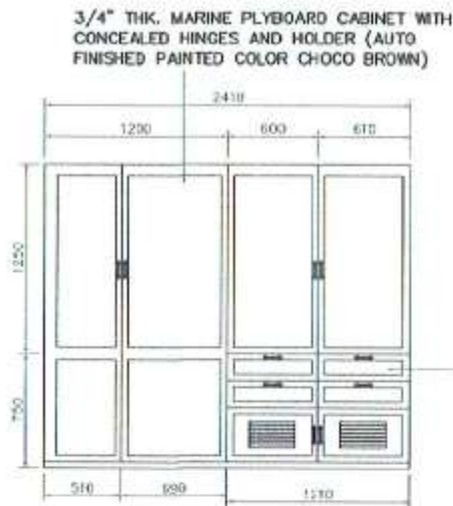
GATE HINGE DETAIL
NOT TO SCALE



CF1-COLUMN FOOTING DETAIL
SCALE 1:25



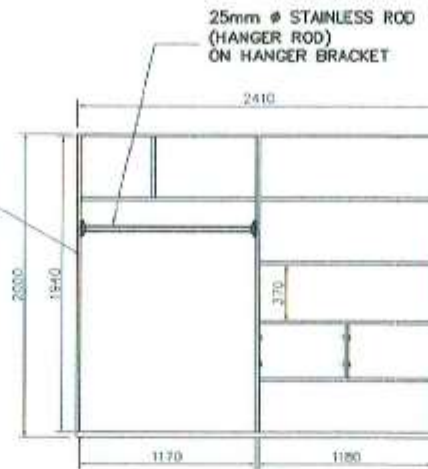
WF-WALL FOOTING DETAIL
SCALE 1:25



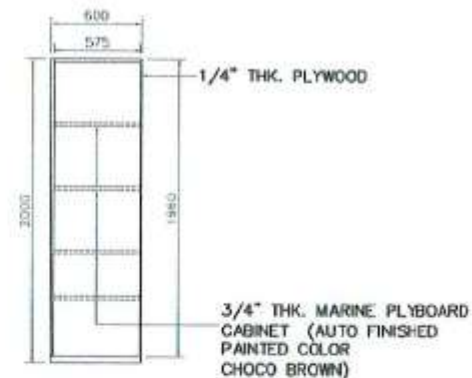
FRONT VIEW (W/ COVER)

3/4" THK. MARINE PLYBOARD (AUTO FINISHED PAINTED COLOR CHOCO BROWN)

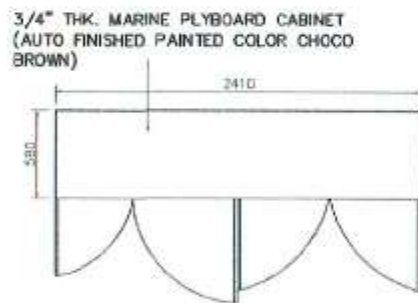
SEE DRAWER DETAIL



FRONT VIEW (W/O COVER)



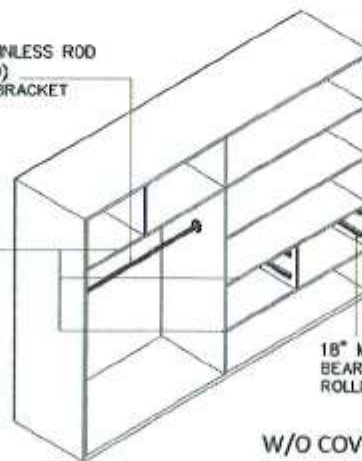
SIDE VIEW



TOP VIEW

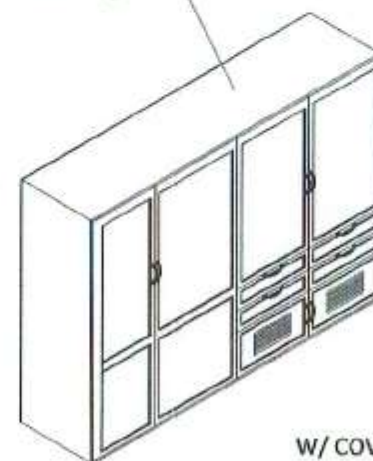
3/4" THK. MARINE PLYBOARD CABINET (AUTO FINISHED PAINTED COLOR CHOCO BROWN)

25mm Ø STAINLESS ROD (HANGER ROD) ON HANGER BRACKET



W/O COVER


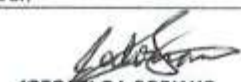




3/4" THK. MARINE PLYBOARD CABINET WITH CONCEALED HINGES AND HOLDER (AUTO FINISHED PAINTED COLOR CHOCO BROWN)

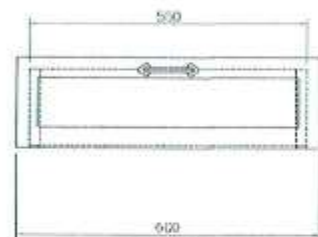


W/ COVER

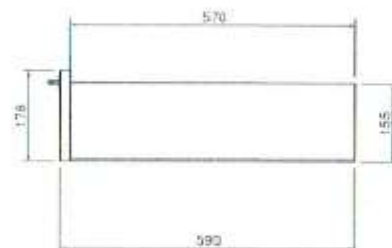
ISOMETRIC VIEW

 **CABINET DETAIL**
SCALE 1:50

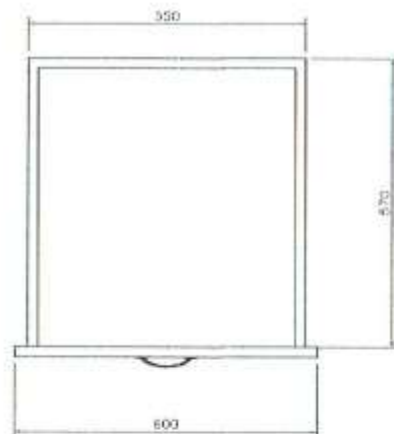
 <p>Republic of the Philippines PHILIPPINE PORTS AUTHORITY PMO-SOCSARGEN</p>	<p>PROJECT TITLE/LOCATION: REPAIR & MAINTENANCE OF PORT PHYSICAL FACILITIES-2017: 1. REPAIR OF BTO CASHIER'S TABLE; 2. REPAIR OF FORMER FCMD FIELD OFFICE, PORT OF GENERAL SANTOS</p>	<p>CAD BY:  JOE CARLO I. SORIANO Engineering Assistant (J.O)</p>	<p>CHECKED BY:  CHARMAINE D. JUNE MANTOYA Senior Engineer A (J.O)</p>	<p>REVIEWED BY:  MARIA VIVIEN M. TANCO Acting Principal Engineer</p>	<p>RECOMMENDING APPROVAL:  JAMESON L. LEE ESD Manager</p>	<p>APPROVED BY:  ATTY. CESAR M. D. TAYA Acting Port Manager</p>	<p>SHEET CONTENT: 1. CABINET DETAIL</p>	<p>Date: SHEET No.: 23/24</p>
---	---	---	--	---	--	--	---	--



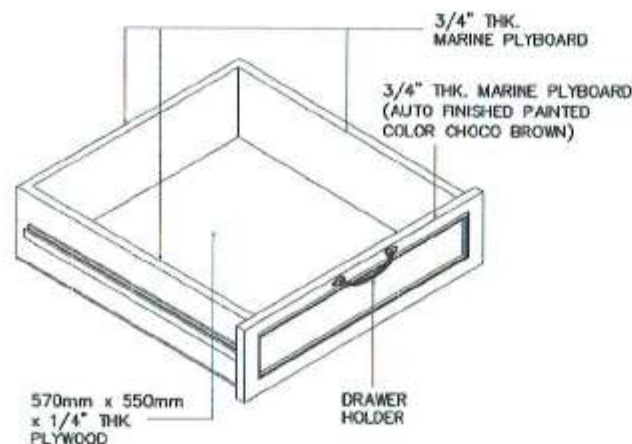
FRONT



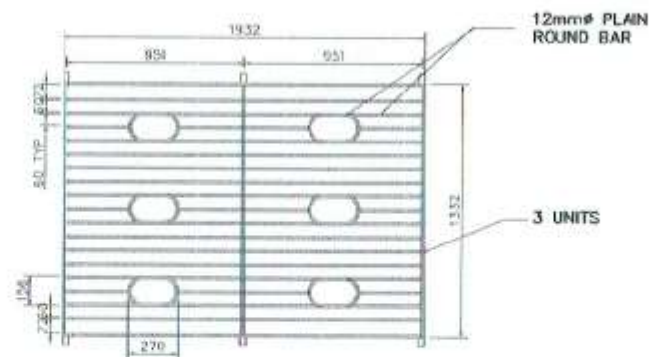
SIDE



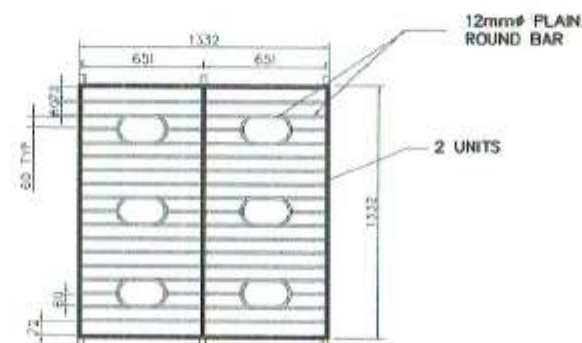
TOP



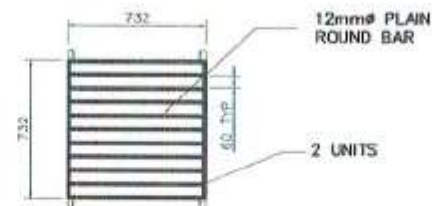
DRAWER DETAIL
SCALE 1:15



FRONT



SIDE



WINDOW GRILL DETAIL
SCALE 1:40

