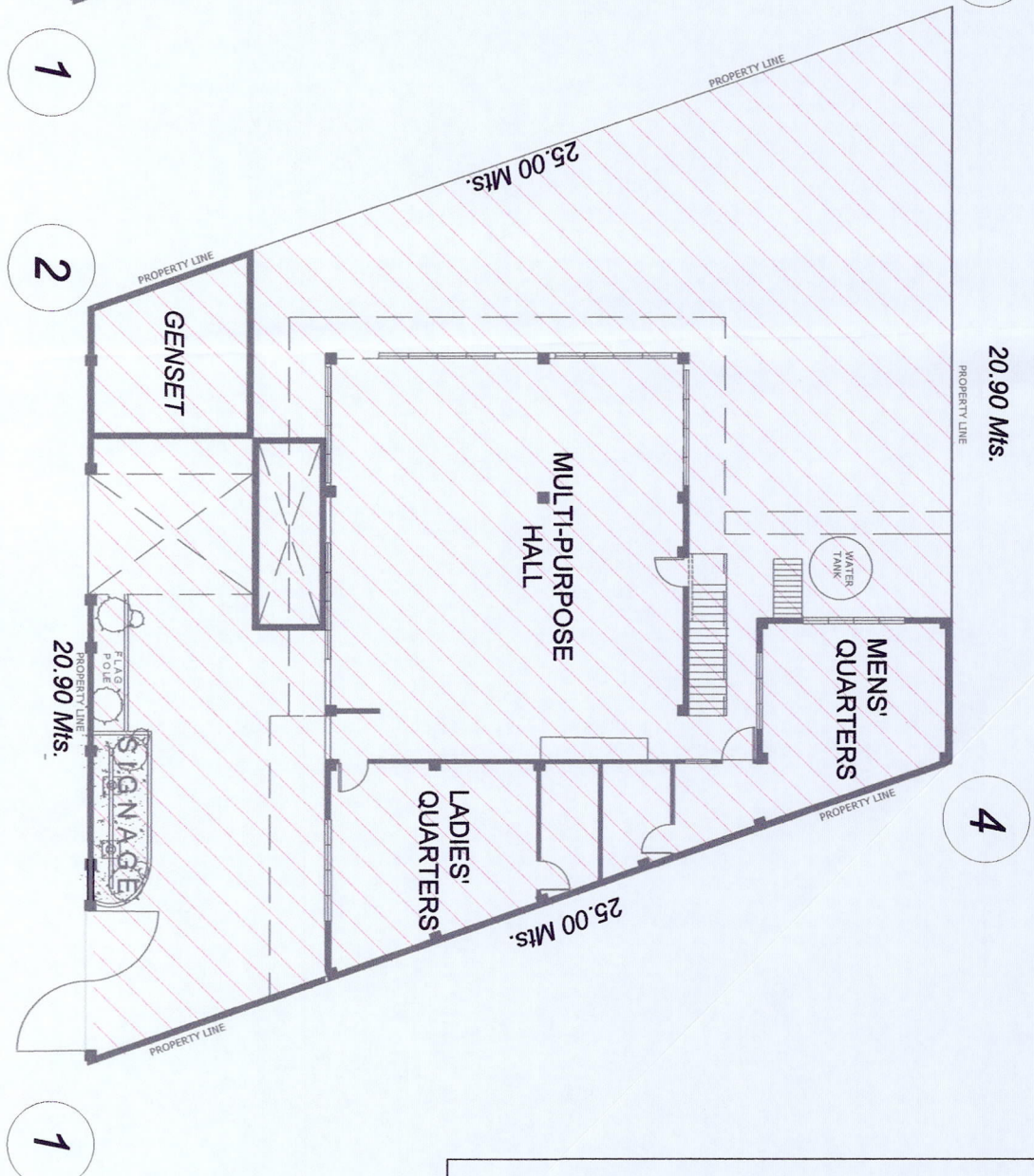
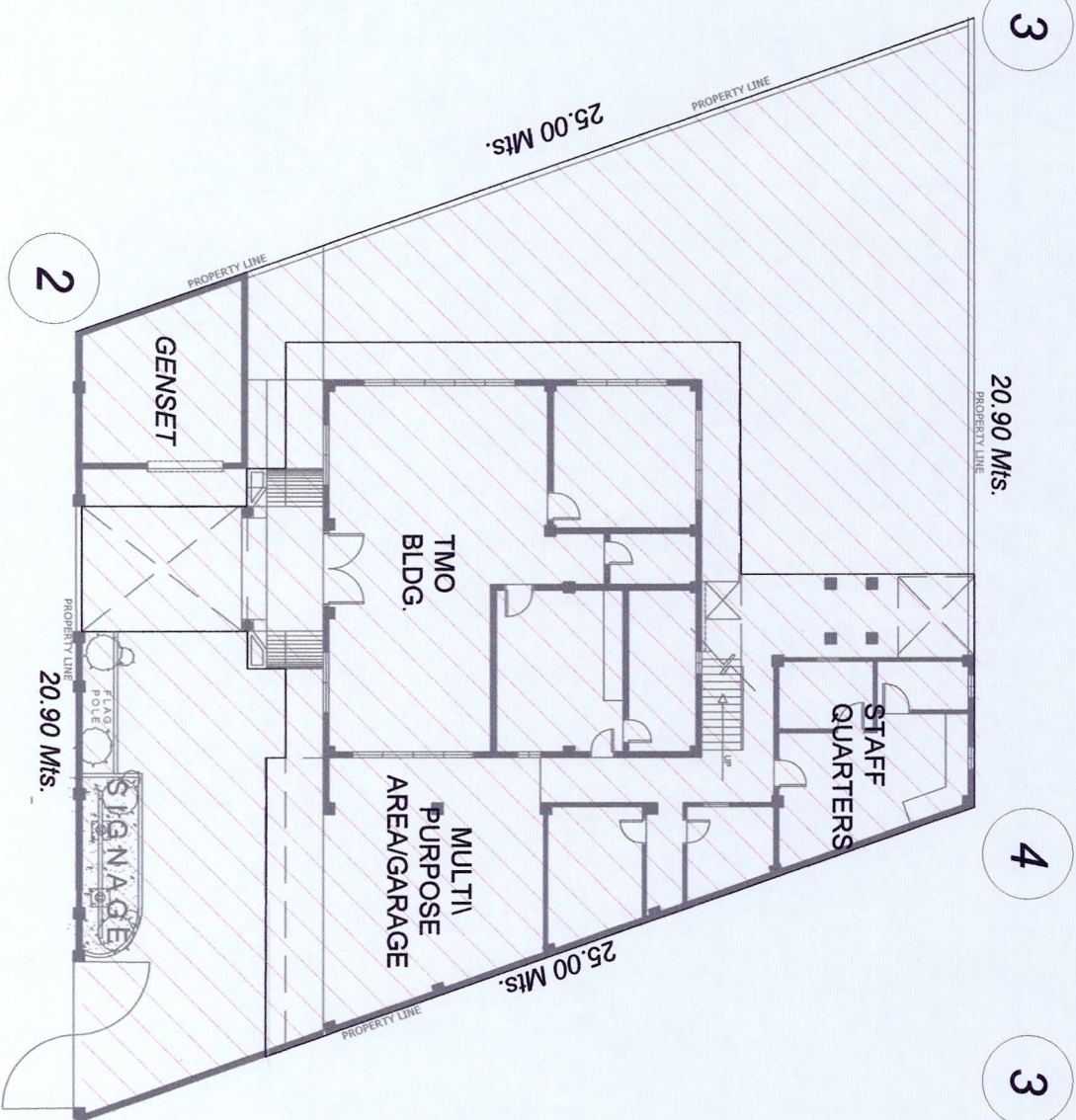


VICINITY MAP
NOT TO SCALE



BLOCK 2

1	15°32'10.89"N, 119°56'51.20"E
2	15°32'11.13"N, 119°56'50.39"E
3	15°32'10.60"N, 119°56'50.00"E
4	15°32'10.36"N, 119°56'50.81"E

(TWO ZAMBALES BLDG.) SITE DEVELOPMENT PLAN

SCALE: 1:1500MTS.

PROJECT TITLE: LOT SURVEY AT PORT OF BALOGANON AND TWO ZAMBALES

PHILIPPINE
PORTS
AUTHORITY

PMO NORTHERN LUZON
ENGINEERING SERVICES DIVISION



PREPARED BY:

ANGEL REYES C. EPINO
SURVEYOR

CHECKED BY:

RYAN B. MERCADO
SUPERVISING ENGINEER - A

REVIEWED BY:

DEMOSTHEENES P. FERRARO
PRINCIPAL ENGINEER

RECOMMENDED BY:

CRISANTO A. ALBA
SENIOR ENGINEER

APPROVED BY:

MARIETA G. ODICIA
PORT MANAGER, PMO-NORTHERN LUZON

SHEET CONTENT:

VICINITY MAP
SITE DEVELOPMENT PLAN

SHEET NO:

2 OF 2