

4. Exposed reinforcement bars, dowels and plates intended for bonding with future extensions shall be protected from corrosion.
5. Supports shall be provided in conformance with ACI 315 and ACI 318, unless otherwise indicated or specified.
6. Concrete Protection for Reinforcement
 - a. The minimum concrete cover of reinforcement shall be as shown below unless otherwise indicated in the drawings.
 - b. Tolerance for Concrete Cover of Reinforcing Steel other than Tendons.

Minimum Cover

7.5cm or more (marine structures and concrete cast against and permanently exposed to earth)

DESIGN STRENGTH OF CONCRETE

Concrete for structural parts or members such as beams, slabs, curtain wall, pile caps and fender/mooring blocks shall develop a minimum 28-day compressive cylinder strength of 24 MPa (3,500 psi) as indicated in the drawings. While for pre-stressed concrete piles a compressive strength of 35 MPa (5,000psi).

TRIAL BATCH FOR CONCRETE

Thirty (30) calendar days before the start of concreting works, the Contractor shall submit design mixes and the corresponding test result made on sample thereof. Sampling and testing shall be in accordance with the ASTM Standard procedures for sampling and testing for the particular design strength(s) required.

The particulars of the mix such as the slump and the proportionate weights of cement, saturated surface dry aggregates and water used shall be stated.

The design mix for concrete to be used shall be submitted together with at least three (3) standard cylinder samples for approval at least one (1) month prior to the start of each concreting schedule. Such samples shall be prepared in the presence of the Engineer.

Standard laboratory strength tests for the 7, 14 and 28 days periods shall be taken to all concrete samples in addition to routine field tests, at cost to the Contractor. Only design mixes represented by test proving the required strength for 7, 14 and 28 days tests shall be allowed.

The cost of sampling, handling and transporting samples from jobsite to the laboratory and the cost of subsequent tests made until the desired mix is attained shall be for the account of the Contractor.

Slump Test shall be made in conformance with ASTM C143, and unless otherwise specified by the Engineer, slump shall be within the following limits:

Structural Element	Slump for Vibrated Concrete	
	Minimum	Maximum
Pavement Concrete	25mm	50mm
Pre-cast Concrete	50mm	70mm
Lean Concrete	100mm	200mm
Sacked Concrete	25mm	50mm
All other Concrete	50mm	90mm

Sampling : Provide suitable facilities and labor for obtaining representative samples of concrete for the Contractor's quality control and the Engineer's quality assurance testing. All necessary platforms, tools and equipment for obtaining samples shall be furnished by the Contractor.

MIXING CONCRETE

1. GENERAL

- a. Concrete shall be thoroughly mixed in a mixer of an approved size and type that will insure a uniform distribution of the materials throughout the mass.
- b. All concrete shall be mixed in mechanically operated mixers. Mixing plant and equipment for transporting and placing concrete shall be arranged with an ample auxiliary installation to provide a minimum supply of concrete in case of breakdown of machinery or in case the normal supply of concrete is disrupted. The auxiliary supply of concrete shall be sufficient to complete the casting of a section up to a construction joint that will meet the approval of the Engineer.
- c. Equipment having components made of aluminum or magnesium alloys, which would be in contact with plastic concrete during mixing, transporting or pumping of Portland cement concrete, shall not be used.
- d. Concrete mixers shall be equipped with adequate water storage and a device for accurately measuring and automatically controlling the amount of water used.
- e. Materials shall be measured by weighing. The apparatus provided for weighing the aggregates and cement shall be suitably designed and constructed for this purpose. The accuracy of all weighing devices except that for water shall be such that successive quantities can be measured to within one percent of the desired amounts. The water measuring device shall be accurate to plus or minus 0.5 percent. All measuring devices shall be subject to the approval of the Engineer. Scales and measuring devices shall be tested at the expense of the Contractor as frequently as the Engineer may deem necessary to insure their accuracy.

- f. Weighing equipment shall be insulated against vibration or movement of other operating equipment in the plant. When the entire plant is running, the scale reading at cut-off shall not vary from the weight designated by the Engineer by more than one percent for cement, 1-½ percent for any size of aggregate, or one percent for the total aggregate in any batch.
- g. Manual mixing of concrete shall not be permitted unless approved by the Engineer.

2. MIXING CONCRETE AT SITE

- a. Concrete mixers may be of the revolving drum or the revolving blade type and the mixing drum or blades shall be operated uniformly at the mixing speed recommended by the manufacturer.

The pick-up and throw-over blades of mixers shall be restored or replaced when any part or section is worn 20 mm or more below the original height of the manufacturer's design. Mixers and agitators which have an accumulation of hard concrete or mortar shall not be used.

- b. When bulk cement is used and the volume of the batch is 0.5 m³ or more, the scale and weigh hopper for Portland cement shall be separate and distinct from the aggregate hopper or hoppers.

The discharge mechanism of the bulk cement weigh hopper shall be interlocked against opening before the full amount of cement is in the hopper. The discharging mechanism shall be interlocked against opening when the amount of cement in the hopper is underweight by more than one percent or overweight by more than 3 percent of the amount specified.

- c. When the aggregates contain more water than the quantity necessary to produce a saturated surface dry condition, representative samples shall be taken and the moisture content determined for each kind of aggregate.
- d. The batch shall be so charged into the mixer that some water enter in advance of cement and aggregates. All water shall be in the drum by the end of the first quarter of the specified mixing time.
- e. Cement shall be batched and charged into the mixer by such means that it will not result in loss of cement due to the effect of wind, or in accumulation of cement on surfaces of conveyors or hoppers, or in other conditions which reduce or vary the required quantity of cement in the concrete mixture.
- f. Where required, synthetic fibrous reinforcement shall be added directly to the concrete mixer after placing the sufficient amount of mixing water, cement and aggregates.
- g. The entire contents of a batch mixer shall be removed from the drum before materials for a succeeding batch are placed therein. The materials composing a batch except water shall be deposited simultaneously into the mixer.
- h. All concrete shall be mixed for a period of not less than 3 minutes after all materials, including water, are in the mixer. During the period of mixing, the mixer shall operate at the speed for which it has been designed.

- i. Mixers shall be operated with an automatic timing device that can be locked by the Engineer. The time device and discharge mechanism shall be so interlocked that during normal operation no part of the batch will be discharged until the specified mixing time has elapsed.
- j. The first batch of concrete materials placed in the mixer shall contain a sufficient excess of cement, sand, and water to coat the inside of the drum without reducing the required mortar content of the mix. When mixing is to cease for a period of one hour or more, the mixer shall be thoroughly cleaned.
- k. In case of rubble concrete, proper mixture and placing of concrete and stones/rocks shall be in accordance to the approved plan. Methodology of work shall be approved by the Engineer.

3. MIXING CONCRETE IN TRUCKS

- a. Truck mixers, unless otherwise authorized by the Engineer, shall be of the revolving drum type, watertight, and so constructed that the concrete can be mixed to insure a uniform distribution of materials throughout the mass. All solid materials for the concrete shall be accurately measured and charged into the drum at the proportioning plant. Except as subsequently provided, the truck mixer shall be equipped with a device by which the quantity of water added can be readily verified. The mixing water may be added directly to the batch, in which case a tank is not required. Truck mixers may be required to be provided with a means by which the mixing time can be readily verified by the Engineer.
- b. The maximum size of batch in truck mixers shall not exceed the minimum rated capacity of the mixer as stated by the manufacture and stamped in metal on the mixer. Truck mixing shall, unless otherwise directed, be continued for not less than 100 revolutions after all ingredients, including water, are in the drum. The mixing speed shall not be less than 4 rpm, nor more than 6 rpm.
- c. Mixing shall begin within 30 minutes after the cement has been added either to the water or aggregate, but when cement is charged into a mixer drum containing water or surface-wet aggregate and when the temperature is above 32 °C, this limit shall be reduced to 15 minutes. The limitation in time between the introduction of the cement to the aggregate and the beginning of the mixing may be waived when, in the judgment of the Engineer, the aggregate is sufficiently free from moisture, so that there will be no harmful effects on the cement.
- d. When a truck mixer is used for transportation, the mixing time in stationary mixer may be reduced to 30 seconds and the mixing completed in a truck mixer. The mixing time in truck mixer shall be as specified for truck mixing.

JOINTS

1. No reinforcement, corner protection angles or other fixed metal items shall be run continuously through joints containing expansion-joint filler, through crack-control joints in slabs on grade and vertical surfaces.
2. Preformed Expansion Joint Filler
 - a. Joints with Joint Sealant

At expansion joints in concrete slabs to be exposed, and at other joints indicated to receive joint sealant, preformed expansion-joint filler strips shall be installed at the proper level below the elevation with a slightly tapered, dressed-and-oiled wood strip temporarily secured to the top thereof to form a groove. When surface dry, the groove shall be cleaned of foreign matter, loose particles, and concrete protrusions, then filled flush approximately with joint sealant so as to be slightly concave after drying.

- b. Finish of concrete at joints

Edges of exposed concrete slabs along expansion joints shall be neatly finished with a slightly rounded edging tool.

- c. Construction Joints

Unless otherwise specified herein, all construction joints shall be subject to approval of the Engineer. Concrete shall be placed continuously so that the unit will be monolithic in construction. Fresh concrete may be placed against adjoining units, provided the set concrete is sufficiently hard not to be injured thereby. Joints not indicated shall be made and located in a manner not to impair strength and appearance of the structure. Placement of concrete shall be at such rate that the surface of concrete not carried to joint levels will not have attained initial set before additional concrete is placed thereon. Lifts shall terminate at such levels as are indicated or as to conform to structural requirements as directed. If horizontal construction joints are required, a strip of 25mm square-edged lumber, beveled to facilitate removal shall be tacked to the inside of the forms at the construction joint. Concrete shall be placed to a point 25mm above the underside of the strip. The strip shall be removed one hour after the concrete has been placed. Any irregularities in the joint line shall be leveled off with a wood float, and all laitance removed. Prior to placing additional concrete, horizontal construction joints shall be prepared.

Construction Joint which is not indicated in the Drawings shall be located as to least affect the strength of the structure. Such locations will be pointed out by the Engineer.

PREPARATION FOR PLACING

Hardened concrete, debris and foreign materials shall be removed from the interior of forms and from inner surfaces of mixing and conveying equipment. Reinforcement shall be secured in position, and shall be inspected, and approved before placing concrete. Runways shall be provided for wheeled concrete-handling equipment. Such equipment shall not be wheeled over reinforcement nor shall runways be supported on reinforcement.

Notice of any concreting operations shall be served to the Engineer at least three (3) days ahead of each schedule.

PLACING CONCRETE

1. Handling Concrete

Concrete shall be handled from mixers and transported to place for final deposit in a continuous manner, as rapidly as practicable, and without segregation or loss of ingredients until the approved unit of work is completed. Placing will not be permitted when the sun, heat, wind or limitations of facilities furnished by the Contractor prevent proper finishing and curing of the concrete. Concrete shall be placed in the forms, as close as possible in final position, in uniform approximately horizontal layers not over 40cm deep. Forms splashed with concrete and reinforcement splashed with concrete or form coating shall be cleaned in advance of placing subsequent lifts. Concrete shall not be allowed to drop freely more than 1.5m in unexposed work nor more than 1.0 m in exposed work; where greater drops are required, tremie or other approved means shall be employed.

2. Time Interval between Mixing and Placing

Concrete mixed in stationary mixers and transported by non-agitating equipment shall be placed in the forms within 30 minutes from the time ingredients are charged into the mixing drum. Concrete transported in truck mixers or truck agitators shall be delivered to the site of work, discharged in the forms within 45 minutes from the time ingredients are discharged into the mixing drum. Concrete shall be placed in the forms within 15 minutes after discharged from the mixer at the jobsite.

3. Hot Weather Requirements

The temperature of concrete during the period of mixing while in transport and/or during placing shall not be permitted to rise above 36 °C. Any batch of concrete which had reached a temperature greater than 36 °C at any time in the aforesaid period shall not be placed but shall be rejected, and shall not thereafter be used in any part of the permanent works.

a. Control Procedures

Provide water cooler facilities and procedures to control or reduce the temperature of cement, aggregates and mixing handling equipment to such temperature that, at all times during mixing, transporting, handling and placing, the temperature of the concrete shall not be greater than 36 °C.

b. Cold Joints and Shrinkage

Where cold joints tend to form or where surfaces set and dry too rapidly or plastic shrinkage cracks tend to appear, concrete shall be kept moist by fog sprays, or other approved means, applied shortly after placement, and before finishing.

c. Supplementary Precautions

When the aforementioned precautions are not sufficient to satisfy the requirements herein above, they shall be supplemented by restricting work during evening or night. Procedure shall conform to American Concrete Institute Standard ACI 305.

4. Conveying Concrete by Chute, Conveyor or Pump

Concrete may be conveyed by chute, conveyor, or pump if approved in writing. In requesting approval, the Contractor shall submit his entire plan of operation from the time of discharge of concrete from the mixer to final placement in the forms, and the steps to be taken to prevent the formation of cold joints in case the transporting of concrete by chute, conveyor or pump is disrupted. Conveyors and pumps shall be capable of expeditiously placing concrete at the rate most advantageous to good workmanship. Approval will not be given for chutes or conveyors requiring changes in the concrete materials or design mix for efficient operation.

a. Chutes and Conveyors

Chutes shall be of steel or steel lined wood, rounded in cross section rigid in construction, and protected from overflow. Conveyors shall be designed and operated and chute sections shall be set, to assure a uniform flow of concrete from mixer to final place of deposit without segregation of ingredients, loss of mortar, or change in slump. The discharged portion of each chute or conveyor shall be provided with a device to prevent segregation. The chute and conveyor shall be thoroughly cleaned before and after each run. Waste material and flushing water shall be discharged outside the forms.

b. Pumps shall be operated and maintained so that a continuous stream of concrete is delivered into the forms without air pockets, segregation or changes in slump. When pumping is completed, concrete remaining in the pipeline shall be ejected and wasted without contamination of concrete already placed. After each operation, equipment shall be thoroughly cleaned and the flushing water shall be splashed outside the forms.

5. Wall and Abutments

No load shall be placed upon finished walls, foundations or abutments until authorized by the Engineer. Minimum time before loading shall be 7 days.

6. Concrete Placing on Wharf

When placing concrete on wharf decks, the Contractor shall:

Ensure that rate of placing is sufficient to complete proposed placing, finishing and curing operations within the scheduled time; that experienced finishing machine operators and concrete finishers are provided to finish the deck; that curing equipment and finishing tools and equipment are at the site of work and in satisfactory condition for use.

Immediately prior to placing, the Contractor shall place scaffolding and wedges and make necessary adjustments. Care shall be taken to ensure that settlement and deflection due to added weight of concrete will be minimal. The Contractor shall provide suitable means to readily permit measurement of settlement deflection as it occurs.

Should any event occur which, in opinion of the Engineer, would prevent the concrete conforming to specified requirements, the Contractor shall discontinue placing of concrete until corrective measures are provided satisfactory to the Engineer. If satisfactory measures are not provided prior to initial set of concrete in affected areas, the Contractor shall discontinue placing concrete and install a bulkhead

at a location determined by the Engineer. Concrete in place beyond bulkheads shall be removed. The Contractor shall limit the size of casting to that which can be finished before beginning of initial set.

COMPACTION

1. Immediately after placing, each layer of concrete shall be completed by internal concrete vibrators supplemented by hand-spading, rodding, and tamping. Tapping or other external vibration of forms will not be permitted unless specifically approved by the Engineer. Vibrators shall not be used to transport concrete inside the forms. Internal vibrators submerged in concrete shall maintain a speed of not less than 7,000 impulses per minute. The vibrating equipment shall at all times be adequate in number of units and power to properly consolidate all concrete.
2. Spare units shall be on hand as necessary to insure such adequacy. The duration of vibrating equipment shall be limited to the time necessary to produce satisfactory consolidation without causing objectionable segregation. The vibrator shall not be inserted into the lower courses that have begun to set. Vibrator shall be applied vertically at uniformly spaced points not further apart than the visible effectiveness of the machine.

EPOXY BONDING COMPOUND

Before depositing new concrete on or against concrete that has set, the surfaces of the set concrete shall be thoroughly cleaned so as to expose the coarse aggregate and be free of laitance, coatings, foreign matter and loose particles. Forms shall be re-tightened. The cleaned surfaces shall be moistened, but shall be without free water when concrete is placed. ASTM C 881. Provide Type I for bonding hardened concrete to hardened concrete; Type II for bonding freshly mixed concrete to hardened concrete; and Type III as a binder in epoxy mortar or concrete, or for use in bonding skid-resistant materials to hardened concrete. Provide Class B if placement temperature is between 4 to 16 °C; or Class C if placement temperature is above 16°C.

FINISHES OF CONCRETE

Within 12 hours after the forms are removed, surface defects shall be remedied as specified herein. The Temperature of the concrete, ambient air and mortar during remedial work including curing shall be above 10 °C. Fine and loose material shall be removed. Honeycomb, aggregate pockets, voids over 13mm in diameter, and holes left by the rods or bolts shall be cut out to solid concrete, reamed, thoroughly wetted, brush-coated with neat cement grout, and filled with mortar. Mortar shall be a stiff mix of one part Portland cement to not more than 2 parts fine aggregate passing the No. 16 mesh sieve, with a minimum amount of water. The color of the mortar shall match the adjoining concrete color. Mortar shall be thoroughly compacted in place. Holes passing entirely through walls shall be completely filled from the inside face by forcing mortar through the outside face. Holes which do not pass entirely through wall shall be packed full. Patchwork shall be finished flush and in the same plane as adjacent surfaces. Exposed patchwork shall be finished to match adjoining surfaces in texture and color. Patchwork shall be damp-cured for 72 hours. Dusting of finish surfaces with dry material or adding water to concrete surfaces will not be permitted.

CONCRETE FINISHING DETAILS

1. Concrete Paving

After concrete is placed and consolidated, slabs shall be screeded or struck off. No further finish is required.

2. Smooth Finish

Required only where specified; screed concrete and float to required level with no coarse aggregate visible. After surface moisture has disappeared and laitance has been removed, the surface shall be finished by float and steel trowel. Smooth finish shall consist of thoroughly wetting and then brush coating the surfaces with cement to not more than 2 parts fine aggregate passing the no. 30 mesh sieve and mixed with water to the consistency of thick paint.

3. Broom Finish

Required for paving; the concrete shall be screeded and floated to required finish level with no coarse aggregate visible. After the surface moisture has disappeared and laitance has been removed, surface shall be float-finished to an even, smooth finish. The floated surfaces shall be broomed with a fiber bristle brush in a direction transverse to the direction of the main traffic.

ITEM 07 : GRAVITY TYPE WALL (CONCRETE BLOCKS/PRE-CAST UNITS)

SCOPE OF WORK

The work includes the furnishing of all labor, materials and equipment required for the manufacturing, transport and installation of concrete modular blocks, caissons and other pre-cast concrete units in accordance with the Specifications and as indicated in the drawings or as directed by the Engineer.

SETTING OUT OF WORKS

1. Topographic/Hydrographic Survey

Prior to commencement of Works, the Contractor together with the Engineer shall conduct topographic and hydrographic surveys in order to establish the actual field condition or bathymetry of the project site. The said survey shall be used as the basis of quantity measurement.

2. The Contractor shall set out the Works and shall solely be responsible for the accuracy of such undertaking. Visible construction markers shall be used to clearly define horizontal and vertical limits prior to placing of any material.

3. Rockworks shall be true to its required slope, sizes and elevation prior to approval of installation of concrete blocks.

MATERIAL REQUIREMENTS

1. All concrete works shall comply with the requirements and specifications indicated in "Reinforced Concrete" section of this document.

2. Jute bags for sacked concrete shall be made with durable abaca fiber, thick and can contained fresh concrete.

EXECUTION

GENERAL

1. Precast concrete to be used shall comply generally with the sections relating to concrete and reinforcement concrete and the following clauses, including those for pre-stressed concrete where applicable.

Concrete members so specified shall be fabricated as precast units with concrete for the specified class placed into a grout-tight mould. If so required, the mould shall be laid on the vibrating table and vibration applied while the concrete is placed.

2. Permanently exposed surfaces shall have a finish given by moulds of closely-jointed steel material. The surface shall be improved by carefully removing all fins and other projections. After inspection by the Engineer, any concrete surfaces which have been accepted but contain blemishes filled with a cement and fine aggregate paste matching the color of the concrete.

Surfaces which will subsequently receive grout or concrete to complete a structural connection or other composite structural component of which the precast unit forms apart, shall be prepared for surfaces treatment as early as possible after casting. This preparation shall be carried out preferably when the concrete has set but not hardened, by jetting with a fine spray of water or rushing with a stiff brush, just sufficient to remove the outer mortar skin and to expose the larger aggregate without its being disturbed. Where this treatment is impractical, sand blasting or a needle gun should be used to remove the surface skin and laitance. Hacking shall be avoided.

The Contractor will be permitted to obtain precast concrete units from outside suppliers provided that they comply with the Specification and that the Contractor obtains the Engineer's approval for each supplier.

The Contractor shall give to the Engineer full details of proposed methods of handling and stacking precast concrete units. The Engineer will examine these details and will either approve the methods or cite other modifications design to ensure that no excessive stresses are set up in the units.

INSTALLATION WORKS

1. The contractor shall provide necessary falsework and required equipment to ensure the quality of workmanship and safety of personnel's.
2. In case of altering the pledge equipment, the contractor shall seek PPA's approval for verification and assessment.
3. The contractor in any case shall ensure the correctness of installation of concrete blocks with consideration to its interlocking properties.
4. Levelling rocks shall be placed in a way that the concrete blocks maintain its verticality and stability. Sacked concrete should be placed on gaps in between existing rockworks and the newly installed concrete blocks. Concrete sack should be made using abaca fiber/jute or better material.

CROSS-SECTIONS OF COMPLETED WORK

Cross-sections showing the elevations of the completed works and the terrain of the existing seabed prior to construction shall go together with every progress report and request for progress or final payment.

Works which was previously paid should be easily identified from sections being requested for payment.

PAYMENT

The contractor shall be paid per piece of every accepted concrete blocks/ pre-cast concrete units installed/placed as approved by the Engineer's.

ITEM 08 : ROCKWORKS

SCOPE OF WORK

The work includes the furnishing of all labor, materials and equipment required for the rock works including armour rocks, underlayer and rock fill in accordance with the Specifications and as indicated in the drawings or as directed by the Engineer.

SETTING OUT OF WORKS

1. Topographic/Hydrographic Survey

Prior to commencement of Works, the Contractor together with the Engineer shall conduct topographic and hydrographic surveys in order to establish the actual field condition or bathymetry of the project site. The said survey shall be used as the basis of quantity measurement.

2. The Contractor shall set out the Works and shall solely be responsible for the accuracy of such undertaking. Visible construction markers shall be used to clearly define horizontal limits prior to placing of any material.

MATERIAL REQUIREMENTS

1. All rocks to be used shall be angular, hard, durable and not likely to disintegrate in seawater. Rock layers to be installed should more or less be "global in shape", "angular in surface" and should avoid "river run rocks". Rocks that are sub-angular may be subject to the approval of the Engineer. Rounded or well rounded pieces will not be accepted.
2. All rocks shall have a minimum unit weight of 2,650 kg per cubic meter (specific gravity 2.65) of solid materials when measured dry.
3. Rocks with specific gravity higher than the above specified is preferable and will readily be accepted. But no adjustment (increase) in the contract price will be made on this account.
4. Rocks of the primary cover layer shall be sound, durable and hard. It shall be free from laminations, weak cleavages, and undesirable weathering, and shall be of such character that it will not disintegrate from the action of the air, seawater, or in handling and placing. All stone shall be angular quarry stone.
5. All rocks shall conform to the following test designations:

Apparent specific gravity	ASTM C 127
Abrasion	ASTM C 535

EXECUTION

QUARRY SITE AND ROCK QUANTITY

1. It is the Contractor's responsibility to make necessary surveys / investigations on quarry sites applicable to the Works, taking into consideration the nature of the rock works required under the Contract such as required quality, total quantity and daily required quantity, transportation method and route etc.,

2. The Contractor shall submit data on characteristics of proposed quarry sites together with the location of sites, test results of their products and samples for the approval of the Engineer.
3. When the Contractor intends to operate a quarry for the Works, the Contractor shall take all the responsibilities in connection with its operation including, but not limited to, obtaining all necessary permits and approvals, payment of safety measures or like (if any), provisions and maintenance of safety measures and temporary access roads, all of private and public roads and temporary jetties to be used to transport quarried materials and the compliance with all regulations etc. required by the authorities having jurisdiction over any part of the operation.

Should any explosive be used in the quarry operations, the Contractor shall be responsible to meet laws and regulations, wherever applicable, established by the Local Government and Central Government Department concerned.

4. Despite the Engineer's previous approval of the natural rock and borrow pits, the Engineer reserves the right to suspend any operation in connection with the rock, if, in its opinion, such rock is not suitable for the work. In such case, the Contractor shall comply with the Engineer's instructions.
5. The finish bulkhead shall be true to grade and section. The spaces/voids between rocks shall be filled/sealed with 2 kg. to 16 kg. rocks and shall be approved by the Engineer before placing geotextile filter thereon to prevent the filling materials (soil and sand) from escaping to cause scouring and settlement of finished surface.

STORAGE OF MATERIALS

Quarried rock materials shall be stored by weight/class or in a manner approved by the Engineer and in a yard kept clean, free from undesirable materials.

SAMPLING TEST

1. Thirty (30) days prior to commencement of rock works, samples and test results of rock material which conforms to the Specifications called for in the Contract shall be submitted to the Engineer for evaluation and approval.
2. Rock samples from different sources and of different classes shall also be submitted, together with test results and its corresponding certificates, for the Engineer's approval.
3. Rocks accepted at the quarries before shipments or at the site before placement shall not be used as a waiver. The Engineer has the right to reject any inferior rock quality.
4. Samples for each class of approved materials are to be kept in the field for comparison/checking of delivered rock materials. A test shall be required for every 1,500 cu.m.

CROSS-SECTIONS OF COMPLETED ROCKWORK

Cross-sections showing the elevations of the completed rock works and the terrain of the existing seabed prior to construction shall go together with every progress report and request for progress or final payment.

Rock works which was previously paid should be easily identified from sections being requested for payment.

ITEM 09 : GEOTEXTILE FABRIC**SCOPE OF WORK**

This work covers all the following requirements regarding the installation of geotextile (filter fabric) in accordance with the lines, grades, and dimensions shown in the drawings.

MATERIAL REQUIREMENTS

The geotextile fabric shall meet the following requirements in full. If required, a sample of 1.0 sq.m. shall be supplied to the Engineer for approval and retention for purposes of comparative testing against materials randomly sampled from the site.

1. PHYSICAL PROPERTIES

- a. The geotextile material shall be a nonwoven needle punched type comprising of needle punched polypropylene fibers or its equivalent.
- b. The geotextile material shall be UV stabilized to ensure retention of minimum 70% original tensile strength after 90 days exposure to sunlight. The manufacturer shall submit test results to the Engineer for approval.
- c. The geotextile must be highly resistant to long term contact with damp cementitious substances or acid or alkali solutions in the pH range 2-13. The manufacturer shall submit test data to ensure resistance of the polymer.

2. MECHANICAL AND HYDRAULIC PROPERTIES

The geotextile supplier is required to certify that the materials delivered to site will be proven to meet or exceed the following properties:

TECHNICAL PROPERTIES	UNIT	MINIMUM	TEST STANDARD
A. Physical Characteristics:			
Minimum Mass (per unit area)	(g/m ²)	540	ASTM D5261
Thickness (F=2 kpa)	mm	4.5	ASTM D5199
B. Mechanical Properties:			
Tensile Strength (md/cd)	kN/m	13/22	ASTM D4595
Tensile elongation (md/cd)	%	90/40	ASTM D4595
CBR Puncture Resistance	N	3000	ASTM D6241
C. Hydraulic Properties:			
Effective Opening Size (O ₉₀ Wet Sieving)	(mm)	0.08	ASTM D4751
Water Permeability: Permittivity	(s ⁻¹)	0.5	ASTM D4491

EXECUTION

1. The geotextile shall be delivered to site with an outer wrapper to protect it from exposure to the elements.
2. Prior to laying of geotextile filter, stone filler shall be placed between gaps or voids of armour / core rocks as likewise mentioned in the requirements of Item "Rock Works".
3. The non-woven geotextile filter shall be installed and lay manually at site as per design drawings. The filter shall be laid lengthwise down slopes and appropriately anchored along the top edge.
4. The Engineer reserves the right to sample geotextile delivered to site for individual quality control testing at the contractor's expense. A material not meeting the manufacturer's certified values will be rejected from the site.
5. The geotextile shall be proven to resist dynamic puncture damage when subject to impact stress from stone armour (200-400 kg.) dropped from a minimum height of 2.0 m. and should be laid on at least 1-foot sand and gravel bedding. Geotextile failing to resist puncture shall not be accepted.
6. To facilitate site Quality Assurance, each roll of geotextile delivered to site shall be clearly labeled with brand name, grade, and production batch number.
7. Geotextile overlaps shall be at least 1.0 m unless otherwise stated on the drawings. Alternatively, geotextile overlaps are to be heat-welded or sewn using appropriate polypropylene or other synthetic thread and portable hand sewing equipment.

ITEM 10 : RECLAMATION AND FILL

SCOPE OF WORK

This item shall consist of the construction of back-up area in accordance with the Specifications and in conformity with the lines, grades, and dimensions shown on the Plans or established by the Engineer.

The area to be upgraded shall be as indicated on the Drawings.

The works includes furnishing of all labor, materials and equipment required to complete/finish the upgrading of the area in accordance with the Drawings and the Specifications.

The following major items of works are included:

1. Supply and fill of suitable materials to places required to upgrade elevation of areas as shown in the drawings.
 - a. Compaction of fill materials
 - b. Supply and placing of filter fabric
2. The work may also include the construction of temporary dike or structure to enclose the reclamation material before the completion of a permanent waterfront containment structure.

MATERIAL REQUIREMENTS

1. Filling Materials

a. General

All sources of filling materials shall be approved by the Engineer.

Appropriate quantities of sample of all materials to be used in the Works shall be submitted for acceptance and approval by the Engineer thirty (30) days before the commencement of work.

General filling shall consist of approved material from approved sources of suitable grading obtained from excavation, quarries or borrow pits, without excess fines, clay or silt, free from vegetation and organic matter.

Sample of approved materials shall be kept/stored in the field for ready reference/comparison of the delivered materials.

The Contractor shall ensure that adequate quantities of required materials that comply with the specifications and quality approved by the engineer are available at all times.

b. Fill Materials other than Dredged/Excavated Materials

Fill materials for reclamation purposes other than dredged materials shall be pit sand, quarry run, gravel or mine tailings. The fill material shall be of the same quality or better as approved by the Engineer.

c. Type of Fill Materials

c.1 Sand and Gravel Fill (Offshore/Reclamation)

The materials shall be composed of at least 50% sand and 50% gravel in terms of volume and shall be free from rock boulders, wood, scrap, vegetables, and refuse. The materials shall not have organic content and the maximum particle size shall not exceed 100mm diameter. Source of materials shall be river or mountain quarry or manufactured.

c.2 Excavated Materials from Seabed (Offshore/Reclamation)

The excavated materials shall be used for backfilling as directed by the Engineer.

c.3 Select Materials (General Embankment)

All materials used for fill shall be free of rock boulders, wood, scrap materials, organic matters and refuse.

The material shall not have high organic content and shall meet the following requirements:

- i. Not more than 10 percent by weight shall pass the No. 200 sieve (75 microns).
- ii. Maximum particles size shall not exceed 75 mm.
- iii. The fill materials shall be capable of being compacted in the manner and to the density of not less than 95%.
- iv. The material shall have a plasticity index of not more than 6 as determined by AASHTO T 90.
- v. The material shall have a soaked CBR value of not less than 25% as determined by AASHTO T 193.

2. Unsuitable Material – Material other than suitable materials such as:

- (a) Materials containing detrimental quantities of organic materials, such as grass, roots and sewerage.
- (b) Organic soils such as peat and muck.
- (c) Soils with liquid limit exceeding 80 and/or plasticity index exceeding 55.
- (d) Soils with a natural water content exceeding 100%.
- (e) Soils with very low natural density, 800 kg/m³ or lower.
- (f) Soils that cannot be properly compacted as determined by the Engineer.

will not be accepted by the Engineer.

EXECUTION

Reclamation and Fill

a. General

The Contractor shall be responsible for all ancillary earthworks that are necessary for the reception of the fill material and including, all spout handling, temporary dike or shoring construction where necessary, temporary protection to dikes in the sea and drainage of excess water.

The arrangements of these ancillary earthworks shall be laid out in consultation with the Engineer and to the Engineer's satisfaction and care shall be taken to minimize the loss of fill.

- b.** Replacement, backfilling and reclamation may be done by any method acceptable to the Engineer. Prior to start of Work, the Contractor shall submit his method and sequence of performing the works to the Engineer for approval. However, the Engineer's approval of the method and sequence of construction shall not release the Contractor from the responsibility for the adequacy of labor and equipment.
- c.** The Engineer shall approve the type of material to be used as fill prior to its placement. If the material is rejected, such material shall be deposited into areas designated or as directed by the Engineer.
- d.** Reclamation of fill material shall be placed in horizontal layers not exceeding 200mm (8 inches), loose measurement, and shall be compacted as specified before the next layer is placed. Effective spreading equipment shall be used on each lift to obtain uniform thickness prior to compacting. As the compaction of each layer progresses, continuous leveling and manipulating will be required to assure uniform density. Water shall be added or removed, if necessary, in order to obtain the required density. Removal of water shall be accomplished through aeration by plowing, blading, dicing, or other methods satisfactory to the Engineer.

Dumping and rolling areas shall be kept separate, and no lift shall be covered by another until the necessary compaction is obtained.

Hauling and leveling equipment shall be so routed and distributed over each layer of the fill in such a manner as to make use of compaction effort afforded thereby and to minimize rutting and uneven compaction.

TRIAL SECTION

Before finish grade construction is started, the Contractor shall spread and compact trial sections as directed by the Engineer. The purpose of the trial sections is to check the suitability of the materials and the efficiency of the equipment and construction method which is proposed to be used by the Contractor. Therefore, the Contractor must use the same material, equipment and procedures that he proposes to use for the main work. One trial section of about 500 m² shall be made for every type of material and/or construction equipment/procedure proposed for use.

After final compaction of each trial section, the Contractor shall carry out such field density tests and other tests required as directed by the Engineer.

If a trial section shows that the proposed materials, equipment or procedures in the Engineer's opinion are not suitable for sub-base, the material shall be removed at the Contractor's expense, and a new trial section shall be constructed.

If the basic conditions regarding the type of material or procedure change during the execution of the work, new trial sections shall be constructed.

CROSS-SECTIONS OF COMPLETED RECLAMATION

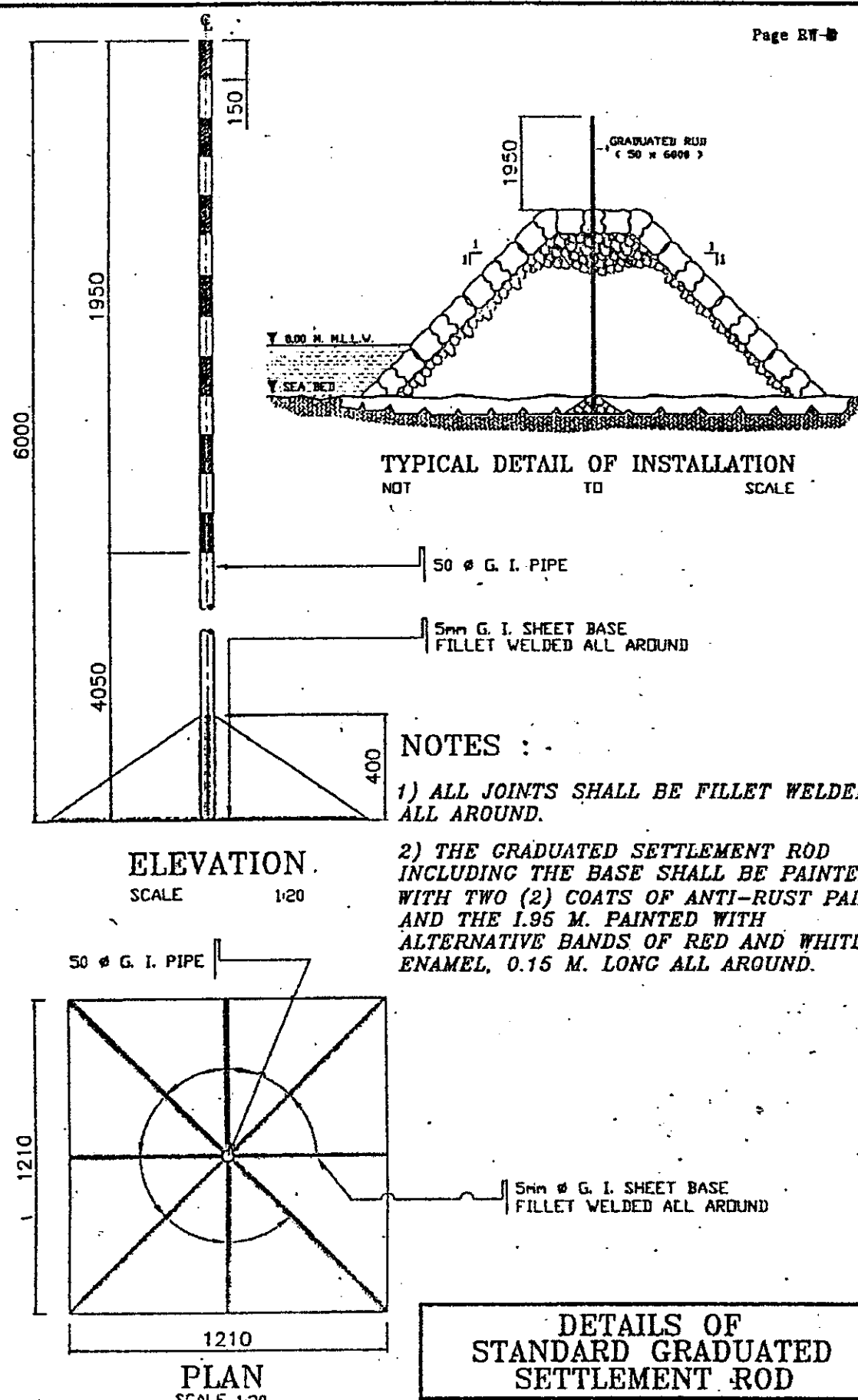
Cross-sections showing the elevations of the completed reclamation and the terrain of the existing seabed prior to construction shall go together with every progress report and request for progress or final payment.

FIELD COMPACTION TEST

Field Density tests to determine the percent of compaction of the compactable material shall be conducted. Compaction of each layer thereafter shall continue until the required field density in accordance with AASHTO T/180 Method D has been achieved. In place density determination shall be made in accordance with AASHTO T191/ ASTM D 1556.

TOLERANCE

Elevation : plus 5 cm.



ITEM 11 : AGGREGATE SUB BASE COURSE

DESCRIPTION

This item shall consist of furnishing, placing and compacting an aggregate subbase course on a prepared subgrade in accordance with this Specification and the lines, grades and cross-sections shown on the Plans, or as directed by the Engineer.

MATERIAL REQUIREMENTS

Aggregate for subbase shall consist of hard, durable particles or fragments of crushed stone, crushed slag, or crushed or natural gravel and filler of natural or crushed sand or other finely divided mineral matter. The composite material shall be free from vegetable matter and lumps or balls of clay, and shall be of such nature that it can be compacted readily to form a firm, stable subbase.

The subbase material shall conform to the following Grading Requirements

Grading Requirements

Sieve Designation		Mass Percent Passing
Standard, mm	Alternate US Standard	
50	2"	100
25	1"	55 – 85
9.5	3/8"	40 – 75
0.075	No. 200	0 - 12

The fraction passing the 0.075 mm (No. 200) sieve shall not be greater than 0.66 (two thirds) of the fraction passing the 0.425 mm (No. 40) sieve.

The fraction passing the 0.425 mm (No. 40) sieve shall have a liquid limit not greater than 35 and plasticity index not greater than 12 as determined by AASHTO T 89 and T 90, respectively.

The coarse portion, retained on a 2.00 mm (No. 10) sieve, shall have a mass percent of wear not exceeding 50 by the Los Angeles Abrasion Tests as determined by AASHTO T 96.

The material shall have a soaked **CBR value of not less than 25%** as determined by AASHTO T 193. The CBR value shall be obtained at the maximum dry density and determined by AASHTO T 180, Method D.

CONSTRUCTION REQUIREMENTS

PLACING

The aggregate subbase material shall be placed at a uniform mixture on a prepared subgrade in a quantity which will provide the required compacted thickness. When more than one layer is required, each layer shall be shaped and compacted before the succeeding layer is placed.

The placing of material shall begin at the point designated by the Engineer. Placing shall be from vehicles especially equipped to distribute the material in a continuous uniform layer or windrow. The layer or windrow shall be of such size that when spread and compacted the finished layer be in reasonably close conformity to the nominal thickness shown on the Plans.

When hauling is done over previously placed material, hauling equipment shall be dispersed uniformly over the entire surface of the previously constructed layer, to minimize rutting or uneven compaction.

SPREADING AND COMPACTING

When uniformly mixed, the mixture shall be spread to the plan thickness, for compaction.

Where the required thickness is 150mm or less, the material may be spread and compacted in one layer. Where the required thickness is more than 150 mm, the aggregate base shall be spread and compacted in two or more layers of approximately equal thickness, and the maximum compacted thickness of any layer shall not exceed 150 mm. All subsequent layers shall be spread and compacted in a similar manner.

The moisture content of sub-base material shall, if necessary, be adjusted prior to compaction by watering with approved sprinklers mounted on trucks or by drying out, as required in order to obtain the required compaction.

Immediately following final spreading and smoothening, each layer shall be compacted to the full width by means of approved compaction equipment. Rolling shall progress gradually from the sides to the center, parallel to the centerline of the road and shall continue until the whole surface has been rolled. Any irregularities or depressions that develop shall be corrected by loosening the material at these places and adding or removing material until surface is smooth and uniform. Along curbs, headers, and walls, and at all places not accessible to the roller, the base material shall be compacted thoroughly with approved tampers or compactors.

If the layer of base material, or part thereof, does not conform to the required finish, the Contractor shall, at his own expense, make the necessary corrections.

Compaction of each layer shall continue until a **field density of at least 100 percent** of the maximum dry density determined in accordance with AASHTO T 180, Method D has been achieved. In-place density determination shall be made in accordance with AASHTO T 191/ASTM D 1556.

TRIAL SECTION

Before subbase construction is started, the Contractor shall spread and compact trial sections as directed by the Engineer. The purpose of the trial sections is to check the suitability of the materials and the efficiency of the equipment and construction method which is proposed to be used by the Contractor. Therefore, the Contractor must use the same material, equipment and procedures that he proposes to use for the main work. One trial section of about 500 m² shall be made for every type of material and/or construction equipment/procedure proposed for use.

After final compaction of each trial section, the Contractor shall carry out such field density tests and other tests required as directed by the Engineer.

If a trial section shows that the proposed materials, equipment or procedures in the Engineer's opinion are not suitable for subbase, the material shall be removed at the Contractor's expense, and a new trial section shall be constructed.

If the basic conditions regarding the type of material or procedure change during the execution of the work, new trial sections shall be constructed.

SURVEYS AND SETTING OUT WORKS

Before the commencement of the pavement works, the Contractor together with the Engineer shall conduct topographic survey which will form the basis of quantity measurement.

The Contractor shall set out the works and shall be solely responsible for the accuracy of such setting-out.

Prior to placement of any material, the Contractor shall establish visible construction markers to clearly define horizontal limits of the Work.

TOLERANCES

The aggregate base course shall be laid to the designed level and transverse slopes shown on the Plans. The allowable tolerances shall be in accordance with following:

Permitted variation from design THICKNESS OF LAYER	± 20 mm
Permitted variation from design LEVEL OF SURFACE	+ 10 mm -20 mm
Permitted SURFACE IRREGULARITY Measured by 3-m straight-edge	20 mm
Permitted variation from design CROSSFALL OR CAMBER	± 0.3%
Permitted variation from design LONGITUDINAL GRADE over 25 m in length	± 0.1%

METHOD OF MEASUREMENT

Aggregate Subbase Course will be measured by the cubic meter (m³). The quantity to be paid for shall be the design volume compacted in-place as shown on the Plans, and accepted in the completed course. No allowance will be given for materials placed outside the design limits shown on the cross-sections. Trial sections shall not be measured separately but shall be included in the quantity of subbase herein measured.

ITEM 12 : AGGREGATE BASE COURSE

DESCRIPTION

This Item shall consist of furnishing, placing and compacting an aggregate base course on a prepared subgrade/subbase in accordance with this Specification and the lines, grades, thickness and typical cross-sections shown on the Plans, or as established by the Engineer.

MATERIAL REQUIREMENTS

Aggregate for base course shall consist of hard, durable particles or fragments of crushed stone, crushed slag or crushed or natural gravel and filler of natural or crushed sand or other finely divided mineral matter. The composite material shall be free from vegetable matter and lumps or balls of clay, and shall be of such nature that it can be compacted readily to form a firm, stable base.

In some areas where the conventional base course materials are scarce or non-available, the use of 40% weathered limestone blended with 60% crushed stones or gravel shall be allowed, provided that the blended materials meet the requirements of this Item.

The base course material shall conform to the following Grading Requirements

Grading Requirements

Sieve Designation		Mass Percent Passing	
Standard mm	Alternate US Standard	Grading A	Grading B
50	2"	100	
37.5	1 – 1/2"	-	100
25.0	1"	60 - 85	-
19.0	3/4"	-	60 - 85
12.5	1/2"	35 - 65	-
4.75	No. 4	20 - 50	30 - 55
0.425	No. 40	5 - 20	8 - 25
0.075	No. 200	0 - 12	2 - 14

The fraction passing the 0.075 mm (No. 200) sieve shall not be greater than 0.66 (two thirds) of the fraction passing the 0.425 mm (No. 40) sieve.

The fraction passing the 0.425 mm (No. 40) sieve shall have a liquid limit not greater than 25 and plasticity index not greater than 6 as determined by AASHTO T 89 and T 90, respectively.

The coarse portion, retained on a 2.00 mm (No. 10) sieve shall have a mass percent of wear not exceeding 50 by the Los Angeles Abrasion test determined by AASHTO T 96.

The material passing the 19 mm (3/4 inch) sieve shall have a soaked **CBR value** of not less than **80%** as determined by AASHTO T 193. The CBR value shall be obtained at the maximum dry density (MDD) as determined by AASHTO T 180, Method D.

If filler, in addition to that naturally present, is necessary for meeting the grading requirements or for satisfactory bonding, it shall be uniformly blended with the base course material on the road or in a pug mill unless otherwise specified or approved. Filler shall be taken from sources approved by the Engineer, shall be free from hard lumps and shall not contain more than 15 percent of material retained on the 4.75 mm (No. 4) sieve.

CONSTRUCTION REQUIREMENTS

PLACING

The aggregate base material shall be placed at a uniform mixture on a prepared sub-base/subgrade in a quantity which will provide the required compacted thickness. When more than one layer is required, each layer shall be shaped and compacted before the succeeding layer is placed.

The placing of material shall begin at the point designated by the Engineer. Placing shall be from vehicles especially equipped to distribute the material in a continuous uniform layer or windrow.

The layer or windrow shall be of such size that when spread and compacted the finished layer be in reasonably close conformity to the nominal thickness shown on the Plans.

When hauling is done over previously placed material, hauling equipment shall be dispersed uniformly over the entire surface of the previously constructed layer, to minimize rutting or uneven compaction.

SPREADING AND COMPACTING

When uniformly mixed, the mixture shall be spread to the plan thickness, for compaction.

Where the required thickness is 150mm or less, the material may be spread and compacted in one layer. Where the required thickness is more than 150 mm, the aggregate base shall be spread and compacted in two or more layers of approximately equal thickness, and the maximum compacted thickness of any layer shall not exceed 150 mm. All subsequent layers shall be spread and compacted in a similar manner.

The moisture content of sub-base material shall, if necessary, be adjusted prior to compaction by watering with approved sprinklers mounted on trucks or by drying out, as required in order to obtain the required compaction.

Immediately following final spreading and smoothing, each layer shall be compacted to the full width by means of approved compaction equipment. Rolling shall progress gradually from the sides to the center, parallel to the centerline of the road and shall continue until the whole surface has been rolled. Any irregularities or depressions that develop shall be corrected by loosening the material at these places and adding or removing material until surface is smooth and uniform. Along curbs, headers, and walls, and at all places not accessible to the roller, the base material shall be compacted thoroughly with approved tampers or compactors.

If the layer of base material, or part thereof, does not conform to the required finish, the Contractor shall, at his own expense, make the necessary corrections.

Compaction of each layer shall continue until a **field density of at least 100 percent** of the maximum dry density determined in accordance with AASHTO T 180, Method D has been achieved. In-place density determination shall be made in accordance with AASHTO T 191/ASTM D 1556.

TRIAL SECTION

Before base construction is started, the Contractor shall spread and compact trial sections as directed by the Engineer. The purpose of the trial sections is to check the suitability of the materials and the efficiency of the equipment and construction method which is proposed to be used by the Contractor. Therefore, the Contractor must use the same material, equipment and procedures that he proposes to use for the main work. One trial section of about 500 m² shall be made for every type of material and/or construction equipment/procedure proposed for use.

After final compaction of each trial section, the Contractor shall carry out such field density tests and other tests required as directed by the Engineer.

If a trial section shows that the proposed materials, equipment or procedures in the Engineer's opinion are not suitable for subbase, the material shall be removed at the Contractor's expense, and a new trial section shall be constructed.

If the basic conditions regarding the type of material or procedure change during the execution of the work, new trial sections shall be constructed.

SURVEYS AND SETTING OUT WORKS

Before the commencement of the pavement works, the Contractor together with the Engineer shall conduct topographic survey which will form the basis of quantity measurement.

The Contractor shall set out the works and shall be solely responsible for the accuracy of such setting-out.

Prior to placement of any material, the Contractor shall establish visible construction markers to clearly define horizontal limits of the Work.

TOLERANCES

The aggregate base course shall be laid to the designed level and transverse slopes shown on the Plans. The allowable tolerances shall be in accordance with following:

Permitted variation from design THICKNESS OF LAYER	± 10 mm
Permitted variation from design LEVEL OF SURFACE	+ 5 mm -10 mm
Permitted SURFACE IRREGULARITY Measured by 3-m straight-edge	5 mm
Permitted variation from design CROSSFALL OR CAMBER	± 0.2%
Permitted variation from design LONGITUDINAL GRADE over 25 m in length	± 0.1%

METHOD OF MEASUREMENT

Aggregate Base Course will be measured by the cubic meter (m³). The quantity to be paid for shall be the design volume compacted in-place as shown on the Plans, and accepted in the completed base course. No allowance shall be given for materials placed outside the design limits shown on the cross-sections. Trial sections shall not be measured separately but shall be included in the quantity of aggregate base course.

ITEM 13 : PORTLAND CEMENT CONCRETE PAVEMENT

SCOPE OF WORK

The works include the furnishing of all labor, materials and equipment required for the construction of gravel base course and concrete pavement. The works shall be in accordance with the lines and grades shown on the Drawings and in conformity with the Specifications.

MATERIAL REQUIREMENTS

Cement

Portland cement shall conform to the requirements of the Section "Reinforced Concrete".

Fine Aggregate

The fine aggregate shall be well-graded from coarse to fine and shall conform to the requirements of the Section "Reinforced Concrete".

Coarse Aggregate

Coarse aggregate shall conform to the requirements of the Section "Reinforced Concrete".

Water

Clean, fresh, potable water shall be used for the mixing of all concrete and mortar and shall be from a source approved by the Engineer. Sea water or brackish water shall not be used.

Admixture

Admixture shall only be used with the written permission of the Engineer. If air-entraining agents, water reducing agents, set retarders or strength accelerators are permitted to be used, they shall not be used in greater dosages than those recommended by the manufacturer, or as permitted by the Engineer. The cost shall be considered as already in the Contractor's unit cost bid for concrete.

TIE BARS AND SLIP BARS

Tie bars shall be deformed bars conforming to the requirements specified in AASHTO M 31 or M 42, except that rail steel shall not be used for tie bars that are to be bent and re-straightened during construction, sizes as indicated on the Drawings. The deformed bars shall be Grade 40 and shall be shipped in standard bundles, tagged and marked in accordance with the Code of Standard practice of the Concrete Reinforcement Steel Institute.

Slip bars shall be smooth round steel bars conforming to the requirements specified in AASHTO M 31 or plain M 42.

Joint Filler

Poured filler for joint shall conform to the requirements of AASHTO M173.

EXECUTION

Concrete Class

The concrete for pavement shall satisfy the following requirements:

Minimum 28-day comprehensive strength	:	24 MPa
Minimum Flexural Strength	:	3.8 MPa
Maximum Aggregate size	:	25 mm
Maximum water cement ratio	:	0.52

Proportioning, Consistency and Mixing of Concrete

The proportioning, consistency and mixing of concrete shall conform to the requirements of the Section "Reinforced Concrete".

Preparation

The base shall be watered and thoroughly moistened prior to placing of the concrete.

Formwork Construction

Formwork shall comply with the requirements of the Section "Reinforced Concrete". Forms shall be of steel, of an approved section and shall be straight and of a depth equal to thickness of the pavement at the edge. The base of the forms shall be of sufficient width to provide necessary stability in all directions. The flange braces must extend outward on the base not less than $\frac{2}{3}$ the height of the form.

All forms shall be rigidly supported on a bed of thoroughly compacted material during the entire operation of placing and finishing the concrete. They shall be set with their faces vertical so as to produce a surface complying with the required tolerance.

Adjacent lanes may be used in lieu of forms for supporting finishing equipment provided that proper protection is afforded to the concrete of the adjacent lanes to prevent damage, and provided further that the surface of the concrete carrying the finishing equipment does not vary by more than 3mm in each meter length. Adjacent lanes in lieu of forms may not be used until the concrete is at least seven (7) days old. Flanged wheels of the finishing equipment shall not be operated on the concrete surface. The inside edge of supporting wheels of the finishing machine shall not operate closer than 100mm from the edge of the concrete lane.

Alternative to placing forms, slip-forming may be used. Slip-form paving equipment shall be equipped with the traveling side forms of sufficient dimensions, shape and strength to support the concrete laterally for a sufficient length of time during placement to produce pavement of the required cross section. No abrupt changes in longitudinal alignment of the pavement will be permitted. The horizontal deviation shall not exceed 20mm from the proper alignment established by the Engineer.

Joints

All joints, longitudinal, transverse, etc., shall be constructed as shown on the Drawings and shall be clean and free of all foreign material after completion of shoulder work prior to acceptance of the work and in accordance with the following provisions:

Longitudinal and Transverse Contact Joints:

Longitudinal contact joints are joints formed between lanes that are poured separately. Transverse contact joints are joints formed between segments of a lane that are poured separately. Transverse contact joints shall be formed perpendicular to pavement centerline at the end of each day of concrete placing, or where concreting has been stopped for 30 minutes or longer but not nearer than 1.5 meters from sawed contraction joints. All contact joints shall have faces perpendicular to the surface of the pavement. Tie bars of the size, length and spacing shown on the Drawings shall be placed across longitudinal and transverse contact joints.

Placing Concrete

The concrete shall be deposited and spread in order that segregation will not occur and place a uniform layer of concrete whose thickness is approximately 20 mm greater than that required for the finished pavement is placed. Rakes shall not be used for handling concrete.

In order to prevent the introduction into the concrete of earth and other foreign materials, the men whose duties require them to work in the concrete, shall in general, confine their movements to the area already covered with fresh concrete. Whenever it becomes necessary for these men to step out of the concrete, their footwear shall be washed or otherwise thoroughly cleaned before returning to the concrete. Repeated carelessness with regard to this detail will be deemed sufficient cause for removing and replacing such worker.

During the operation of striking off the concrete, a uniform ridge of concrete at least 70 mm in height shall be maintained ahead of the strike-off screed for its entire length. Except when making a construction joint, the finishing machine shall at no time be operated beyond that point where this surplus can be maintained in front of the strike-off screed.

After the first operation of the finishing machine, additional concrete shall be added to all low places and honeycombed spots and the concrete rescreeded. In any rescreeding, a uniform head of concrete shall be maintained ahead of the strike-off for its entire length. Honeycombed spots shall not be eliminated by tamping or grouting.

Workers on the job shall have mobile footbridges at their disposal so that they need not walk on the wet concrete.

In conjunction with the placing and spreading, the concrete shall be thoroughly spaded and vibrated along the forms, bulkhead, and joints.

The internal vibrators shall be of pneumatic, gas-driven, or electric type, and shall operate at a frequency of not less than 3,200 pulsations per minute.

Whenever the placing of the concrete is stopped or suspended for any reason, for a period of 30 minutes or longer, a suitable bulkhead shall be placed so as to produce a vertical transverse joint. If an emergency stop occurs within 2.5 meters of the contraction or an expansion joint the concrete shall be removed back to the joint. When the placing of the concrete is resumed, the bulkhead shall be removed and a new concrete placed and vibrated evenly and solidly against the face of previously deposited concrete. Any concrete

in excess of the amount needed to complete a given section or that has been deposited outside the forms shall not be used in the work.

The Contractor shall provide suitable equipment for protecting the fresh concrete in case of rain, such as screens which will cause the rain water to run off beyond the edges of the paving, rain proof tarpaulins or other methods approved by the Engineer. The equipment shall be sufficient to shelter from rain all areas equal to that paved in two hours of work.

Finishing Concrete

The concrete shall be compacted and finished by a mechanical, self-propelled finishing machine of approved type, having two independently operated screeds. If a machine possessing only one screed is approved, the screed will not be less than 450 mm wide and shall be equipped with compensating springs to minimize the effect of the momentum of the screed on the side forms. The number of driving wheels, the weight of the machine and the power of the motor shall be so coordinated as to prevent slippage. The top of the forms and the surface of the finishing machine wheels shall be kept free from concrete or dirt.

The machine shall at all times be in first-class mechanical condition and shall be capable of compacting and finishing the concrete as herein described. Any machine which causes displacement of the side forms from the line or grade to which they have been properly set, or causes undue delay due to mechanical difficulties, shall be removed from the work and replaced by a machine meeting the Specifications.

The finishing machine shall be operated over each section of pavement two or more times and at such intervals as will produce the desired results. Generally, two passes of the finishing machine are considered the maximum desirable.

The concrete shall be vibrated, compacted, and finished by a vibratory finishing machine. The vibratory machine shall meet the requirements for ordinary finishing, and shall be one of the following type:

1. The machine shall have two independently operated screeds; the front screed shall be equipped with vibratory units with a frequency of not less than 3,500 pulsations per minute. There shall be not less than one vibratory unit for each 2.5 meters length or portion thereof, of vibratory screed surface. The front screed shall not be less than 300mm wide and shall be equipped with a "bull nose" front edge built on a radius of not less than 50mm. This type of vibratory finishing machine shall be operated in such manner that each section of pavement will receive at least one vibratory pass, but not more than two passes, unless otherwise directed, or ;
2. The machine shall be equipped with an independently operated vibratory "pan" (or pans) and two (2) independently operated screeds, the "pan" shall be mounted in a manner that will permit it to come in contact with the forms and will permit vibration of the full width of lane simultaneously.

There shall be not less than one vibratory unit for each 2 m. length or portion thereof, of vibrating pan surface. The vibratory units in any individual pan shall be synchronized and have a frequency of not less than 3,500 pulsations per minute. The front screed shall be capable of operating in a position that will strike off the concrete at a sufficient height above the top of the forms to allow for proper compaction with the vibrating pan. This type of vibratory finishing machine shall be operated in such manner that each section of pavement will receive at least one vibratory pass but not more than two passes, unless otherwise directed.

After the final pass of the finishing machine and when the concrete has started to dry, the surface of the pavement shall be finished with an approved longitudinal float. The float may be operated either manually or by mechanical means. The float may be either of wood or metal shall be straight and smooth and light in weight so as not to displace or sink into the concrete surface.

To be effective, the float shall be at least 300mm wide and 3m long. When manually operated, the float shall be moved from edge to edge with a wiping motion and advance one (1) meter or more.

The succeeding trip shall overlap the previous trip. A light smoothing lute at least 3 meters long may be used provided approved by the Engineer.

The surface of the pavement shall be tested by the Contractor, before the final belting, with an approved standard straightedge 3 meter in length. Irregularities so detected shall be corrected immediately. Special attention shall be given to the concrete adjacent to transverse joints to insure that the edges thereof are not above the grade specified or the adjacent concrete below grade. All depressions or projections shall be corrected before any initial set has developed in the concrete.

After the concrete has been brought to the required grade, contour and smoothness, it shall be finished by passing over the concrete a drag of one or two burlap clothes, which give the surface the required roughness. The vehicles used to carry these cloths may be independent of the concrete-laying machine or may be incorporated with it and may be operated either by hand or mechanically.

Hand finishing will be permitted only on variable width sections of the pavement and other places where the use of the finishing machine would be impractical. Hand finishing shall be accomplished by means of the hand-operated strike-off template of either steel or steel-shod wood construction. The striking template shall be operated forward with a combined longitudinal and transverse motion and shall be so manipulated that neither end will be raised off the side forms. A similar tamper shall be used for tamping the concrete.

As soon as the concrete has attained its initial set, the edges of the pavement, the longitudinal joints, the construction dummy and expansion joints not sawn shall be carefully finished with an edging tool having radius of at least 5mm. The tools, the special accessories for cutting impressed joints and methods of workmanship shall be such as will produce a joint whose edges are of the same quality of concrete as the other portion of the pavement. Methods and workmanship which make use of excess mortar or grout in this area shall be eliminated. Unnecessary tool marks shall be eliminated during work, and the edges left smooth and true to line.

Striking Forms

Forms shall remain in place at least 12 hours after the concrete has been placed. When working conditions are such that the early strength gain of the concrete is delayed, the forms shall remain in place for a longer period, as directed by the Engineer. Bars or heavy load shall not be used against the concrete when still in the forms. Any damage to concrete resulting from form removal shall be repaired promptly by the Contractor as directed by the Engineer without any additional payment to the Contractor.

Curing Concrete

Unless otherwise ordered by the Engineer, curing of concrete shall be done by any method specified in the Section "Reinforced Concrete".

Cleaning and Sealing Joints

After completion of the required curing and before opening of the pavement to traffic, all joints shall be thoroughly cleaned of all concrete aggregate fragments or other materials.

After removal of side forms, the ends at transverse expansion joints at the edges of the pavement shall be carefully cleaned of any concrete within the expansion spaces for the entire depth of slab, care being taken not to injure the ends of the joints. Expansion and contraction joints shall then be poured with a hot joint sealer to the depth as indicated on the Drawings. Joint sealer shall be poured using approved hand pouring pots, with liquid at a temperature not less than that recommended by the approved manufacturer.

Opening to Traffic

The pavement shall be closed to traffic, including the vehicles of the Contractor, for a period of 10 days after the concrete is placed or longer if in the opinion of the Engineer, the weather conditions make it necessary to extend this time. The Contractor shall furnish, place and maintain satisfactory barricades and lights as directed, to exclude all traffic from the pavement.

Any damage to the pavement due to traffic shall be repaired or replaced at the expense of the Contractor. Paving mixers, mechanical concrete spreaders and finishers and other heavy paving equipment shall not be operated on completed concrete lanes in order to construct alternate lanes until after the regular curing period is completed. Even then, planks shall be laid on the finished pavement or other precautions taken to prevent damage to the concrete pavement.

Pavement Smoothness, Thickness and Tolerance

Portland cement concrete pavement shall be constructed to the designed level and transverse slope shown on the Drawing. The allowable tolerance shall be as listed hereunder.

- | | | |
|----|--|---------|
| 1. | Permitted variation from design thickness of layer | + - 5mm |
| 2. | Permitted variation from design level of surface | + - 5mm |

The thickness of the pavement will be determined by measurement of cores from the completed pavement in accordance with AASHTO T 148.

The completed pavement shall be accepted on a lot basis. A lot shall be considered as 2,500 sq.m of pavement. The last unit in each slab constitutes a lot in itself when its length is at least $\frac{1}{2}$ of the normal lot length. If the length of the last unit is shorter than $\frac{1}{2}$ of the normal lot length, it shall be included in the previous lot.

Other areas such as intersections, entrances, crossovers, ramp, etc., will be grouped together to form a lot. Small irregular areas may be included with other unit areas to form a lot.

ITEM 14 : SECURITY FENCE

DESCRIPTION

This item shall consist of furnishing, construction and installation of security fence components in any combinations in accordance with this specification, lines, grades and cross-sections shown on the Plans, or as directed by the Engineer.

MATERIALS REQUIREMENT

Materials shall conform to the respective specifications and other requirements specified below

CONCRETE HOLLOW BLOCKS (CHB)

CHB shall be of standard manufacture, machine vibrated with fine and even texture and well-defined edges and conforming to the requirements of ASTM C 129. Unless otherwise specified on the Drawings, It shall have a minimum compressive strength of 4.14 MPa (600 psi). CHB shall be non-load bearing uniform and essentially smooth as normally achieves by standard molding methods and shall be free from any cracks, flaws or other defects.

BEDDING MORTAR

Mortar shall be composed of 1 part of Portland cement, 3 parts of sand and ½ part of lime. It shall have a compressive strength of [14 MPa (2,000 psi)] at 28 days and shall comply with property specifications for type N mortar set forth in ASTM Specification C 270 and as modified herein, proportioned and tested in an approved laboratory at the expense of the Contractor. When tested for water retention, the mortar shall have a flow after suction, of 75 percent or more when mixed to an initial flow of 125 to 140 percent. When tested for compressive strength, mortar shall be mixed to a flow of 100 to 115 percent. Aggregate for mortar shall conform to ASTM C 144.

PLASTER

Plaster shall comply with the same specification as those for bedding mortar and will include the use of synthetic fibrous reinforcement of type and dosage recommended by the manufacturer.

REINFORCING STEEL BARS AND RODS

Minimum yield strength of reinforcement shall conform to the specifications in Section of Reinforced Concrete.

CONCRETE

Minimum compressive strength of concrete shall conform to the specifications in Section of Reinforced Concrete.

BARBED WIRE AND STEEL/GI PIPE POST

The materials to be used shall conform to the specifications indicated on the drawings and shall be approved by the Engineer prior to installation.

CYCLONE WIRE MESH

Cyclone Wire Mesh shall conform to the requirements of ASTM A 121, Class I.

CONSTRUCTION REQUIREMENT

The Contractor shall perform such clearing and grubbing as may be necessary to construct the fence to required grade and alignment. Fence shall generally follow the contour of the ground. Grading shall be performed where necessary to provide a neat appearance.

The post shall be erected vertically in position inside the formwork of the foundation block prior to the placing of concrete shall be adequately supported by bracing to prevent movement of the post during the placing and setting of the concrete. The post shall be erected to the height and location shown on the Plans, or as ordered by the Engineer.

Masonry shall be laid plumb, true to line, with level courses accurately spaced. Bond pattern shall be kept plumb throughout. Corners and reveals shall be plumb and true. Vertical joints shall be shoved tight. Each unit shall be adjusted to final position while mortar is still soft and plastic. Any unit that is disturbed after mortar has stiffened shall be removed and relaid with fresh mortar. Courses shall be so spaced that backing masonry will level off, flush with the face work at all joints where ties occur. Chases and rake-out joints shall be kept free from mortar or other debris.

Anchorage to concrete. Anchorage to abutting columns shall be provided only where indicated. Details shall be as indicated including anchorage to underside of beams and slabs

Cutting and fitting, including that required to accommodate the work of others shall be done by masonry mechanics. Wherever possible, full units of the proper size shall be used in lieu of cut units. Cut edges shall be clean, true and sharp. Openings shall be carefully cut, formed or otherwise neatly made for recessed items and for electrical, plumbing, or other mechanical installations so that wall plates, cover plates, or escutcheons required by the installation will completely conceal the openings and will have bottoms in alignment with lower edge of masonry joints. Webs of hollow masonry units shall be cut to the minimum required for the installation. Reinforced masonry lintels shall be provided as indicated above openings over 300mm wide, for pipes, ducts and cable trays, unless steel sleeves are used.

Spaces around built-in items shall be filled with mortar. Openings around flush-mounted electrical outlet boxes in wet locations shall be pointed flush with mortar including flush joints above the boxes. Anchors, ties, accessories, flashing, pipe sleeves and other items required to be built-in shall be built-in as the masonry work progresses. Anchors, ties, and joint reinforcement shall be fully embedded in mortar.

Unfinished work shall be stepped back for jointing with new work. Toothing may be resorted to only when specifically approved. Before laying new work, loose mortar shall be removed and the exposed joint shall be thoroughly cleaned.

Mortar shall be accurately measured in laboratory-established proportions and mixed with as much water as may be necessary to produce the wettest workable consistency possible. Mortar shall be placed in final position within one hour after mixing. Mortar not used or that has started to set within this time interval shall be discarded.

Joints in exposed-to-view except control joints, joints to be pointed or caulked or sealed, and openings around flush-mounted electrical outlet boxes in wet locations shall be tooled slightly concave with the mortar thoroughly compacted and pressed against the edges of the units. Tooling shall be done when the mortar has been thumbprint hard. The tooled joint shall be finished to uniformly straight and true lines and surfaces, smooth and free of tool marks.

Details of reinforcement shall be as indicated in the drawings. Reinforcing shall not be bent or straightened in a manner injurious to the steel. Bars with kinks or bends not shown on the drawings shall not be used. Placement of reinforcement shall be inspected and approved prior to placing

grout. One piece vertical bars extending from floor to floor or roof above shall be provided. Vertical bars shall be spliced only where indicated.

a. Positioning Bars

Vertical bars shall be positioned accurately at the centerline of the wall. A minimum clearance between the bars and masonry units of 12mm and between parallel bars of one diameter of the reinforcement shall be maintained. Vertical reinforcing shall be held in place using metal supports, centering clips, spacers, ties or caging devices located near the ends of each bar and at intermediate intervals of not more than 192 diameters of the reinforcement.

b. Splices

Splices shall be located only as indicated. Splices shall be staggered in adjacent bars at least 600mm. Bars shall be lapped a minimum of 40 diameters of the reinforcement.

Welding shall be done in accordance with Standard Code and under supervision of Engineer.

PAINTING AND CLEANING

If required in the contract, paint shall be in accordance to the specification indicated in the plans and coordinated with the end user.

Mortar daubs or splashing, before setting or hardening, shall be completely removed from masonry unit surfaces that will be exposed or painted. Before completion of the work, all defects in joints or masonry to be exposed or painted shall be raked out as necessary, filled with mortar, and tooled to match existing joints. Masonry surfaces shall not be cleaned, other than removing excess surface mortar until mortar in joints has hardened. Masonry hardened surfaces shall be left clean, free of mortar daubs, dirt, stain and discoloration, including scum from cleaning operations and with tight mortar joints throughout. Metal tools and metal brushes shall not be used for cleaning.

ITEM 15 : DRAINAGE WORKS

SCOPE OF WORK

The works shall consist of excavation, backfilling and construction of lateral drains, construction of manholes, reconnection to existing lateral and other related works in accordance with the dimensions, size, elevation and grade as shown on the drawing and shall conform with the Specification.

At least thirty (30) days before the start of any construction related to drainage works, the Contractor shall submit to the Engineer for his approval, shop drawings of the drainage work he intends to construct. The shop drawings shall include the materials and the general method of installation he intends to employ.

MATERIAL REQUIREMENTS

BACK FILL

Fill shall be in accordance with Item "Reclamation and Fill".

GRAVEL BEDDING

Gravel Bedding/gravel base shall be in accordance with the specifications of Crushed Course Aggregates in "Reinforced Concrete".

SAND BEDDING

Sand bedding shall be in accordance with Item "Reinforced Concrete (Fine Aggregates)".

CONCRETE

Mixing/Casting and steel reinforcements shall be in accordance with Item "Reinforced Concrete" while the dimensions shall be as shown on the Drawings.

CEMENT MORTAR

Cement mortar shall consist of one part Portland cement to two parts of fine aggregate with water added as necessary to obtain the required consistency.

REINFORCED CONCRETE PIPE

The fabrication of reinforced concrete pipes shall conform to the Specifications of ASTM C 76 while the testing requirements shall conform to ASTM C 497. The Engineer reserves the right to inspect and test the pipe delivered for intended purpose. Defects that are discovered after acceptance of delivery of the pipe but before installation shall be a cause for rejection.

Standard reinforcement details and concrete strength shall be in accordance with DPWH "Standard Two Meter Concrete Pipe Culvert".

STEEL GRATING

The fabrication of grating shall conform to requirements of Steel and Metal Works" and "Zinc Coatings on Iron and Steel"

All steel grades and dimensions shall conform with the approved plans.

EXECUTION

EARTHWORKS

All earthworks for concrete pipe culvert shall conform to the lines, grades and elevations shown on the drawings or as directed by the Engineer.

The lateral drain shall be excavated to the depth, grade and width established by the Engineer. The bedding surface shall provide a firm foundation of uniform density throughout the entire length. Soft, spongy, or otherwise unstable material encountered that will not provide a firm foundation for the concrete drainage shall be removed to the full width of the trenches and replaced by suitable material to a depth of not less than 30 cm. 100mm thick gravel bedding shall be used as foundation or otherwise as specified.

PIPE LAYING

The pipe shall be tested for water-tightness of joints before backfilling the trench. Unsatisfactory work shall be corrected without additional cost to the PPA. The collar shall have set sufficiently prior to backfilling.

Methods of installation and typical bedding for pipe conduits if not included in the plans, shall conformed to DPWH "Standard Two Meter Reinforced Concrete Culvert".

LATERAL DRAIN

Concrete cover and the steel gratings shall be set to the required elevations as shown on the drawings to fit the adjoining surfaces and shall be installed after the adjoining concrete is struck off and finished, and the fit on the frames shall be such that there is no rocking.

All completed structures shall be thoroughly cleaned of any accumulations of silts, debris or foreign matter of any kind, until finally accepted and put into service.

CATCH BASIN INLETS, MANHOLES AND OUTLETS

Lid frames shall be set to the required elevations as shown on the drawings to fit the adjoining surfaces. Lids shall be installed after the adjoining concrete is struck off and finished, and the fit on the frames shall be such that there is no rocking.

Where reconstruction of existing catch basin inlets, manholes, outlets, or similar structures are indicated, the work shall be in accordance to the details and elevations as shown on the drawings, including re-installation of existing metal frames, grates and lids, or replacing of concrete covers instead of grates that may have been lost or found lacking. All completed structures shall be thoroughly cleaned of any accumulations of silts, debris or foreign matter of any kind, until finally accepted and put into service.

FIELD DENSITY TEST

Field Density tests to determine the percent of compaction of the fill material shall be conducted until a field density of at least 95 percent of the maximum dry density in accordance with AASHTO T180, Method D has been achieved. In place density determination shall be made in accordance with AASHTO T191.

CLEARING AND DISPOSAL

Dumping or disposal of un-used excavated materials shall be coordinated to PMO. If the excavated materials are determined for disposal, the contractor will provide all necessary works and expenses for its completion in concurrence by the Engineer.

ITEM 16 : PILING WORKS (SPP)

SCOPE OF WORK

This section covers the minimum requirements for the fabrication, hauling, spotting, driving and finishing of all foundation piles to be used as containment for the proposed pier.

The Contractor may however, adopt, in addition to this minimum requirements additional provisions as may be necessary to insure the successful prosecution of the work related to the said undertaking.

METHOD STATEMENT

Before the commencement of any piling works, the Contractor shall submit (allowing sufficient time for consideration) to the Engineer for approval a Safety Policy and a Method Statement which shall include the following information:

1. Program of Works detailing sequence and timing of individual portions of works.
2. Maximum proposed lead at any stage of driving between a pile and its neighbor and the limitations of same if hard driving is encountered.
3. Contingency plan in the event of encountering obstructions or reaching driving refusal to minimize disruption/delay especially when using pitch and drive methods.

MATERIAL REQUIREMENTS

STEEL PIPE PILES

Steel tubular piles required under this heading may either be fluted or plain, tapered or cylindrical, seamless or welded type or as indicated in the drawing conforming to the requirements of ASTM A 252, equal or better. Minimum shell thickness shall be as indicated in the drawings.

Manufacturing processes, grades and test requirements shall conform to the requirements of ASTM A 252. Other materials, equal or better, than this standard may be allowed upon approval of the implementing agency.

Type of Test	Requirements
Chemical Composition -	ASTM A252, ASTM A751
Mechanical/ Tensile Test -	ASTM A252, ASTM A370
Physical /Test -	ASTM A252

REINFORCING BAND AND BACKING CYLINDER PLATE

Manufacturing processes, grades and test requirements shall conform to the requirements of ASTM A 252. Other materials, equal or better, than this standard may be allowed upon approval of the implementing agency.

CONCRETE AND REINFORCEMENT WORKS

Concrete and reinforcement works for filler of steel pipe piles, concrete jacket and pile cap shall be in accordance with the Section "Reinforced Concrete" where the compressive strength of concrete at 28 days and yield strength of reinforcement shall be 24MPa (3,500 psi) and 276MPa (40 000psi) respectively.

PROTECTIVE COATING

Coating System

The corrosion protective coating shall be polyurethane-base.

The protective coating supplier is required to certify that the materials delivered to the fabrication site will be proven to meet or exceed the following properties:

TECHNICAL PROPERTIES	UNIT	MINIMUM	TEST STANDARD
A. Physical Characteristics:			
Thickness	microns	1500	ASTM D1186
B. Mechanical Properties:			
Tensile Strength	N/mm ²	18	DIN 53504
Elongation	%	19	ASTM D2370
Impact	J/mm	8	ASTM 2794-69/14
Bond Strength	kg/cm ²	234	DIN 53232

Application of the protective coating shall be one meter (1) below the design depth up to the pile butt of the steel pipe piles, as illustrated in Figure 1.

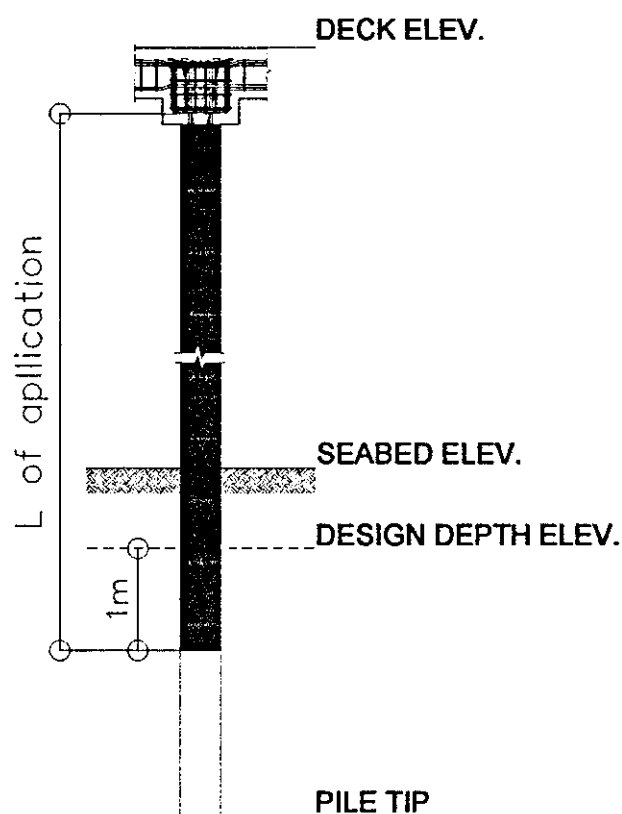


Figure 1: Illustration showing the application of Protective Coating System

Surface Preparation

The surface areas of the sections of piles that are intended to be coated are cleaned in accordance with standard ISO 8501-1 "Pictorial Standard of Cleanliness". These standards for surface cleaning outline the visual characteristics of the substrate as viewed by the naked eye. Once the substrate is cleaned, it is compared to reference pictures contained within the standards. The Sa 2½ is to be used for this undertaking, which is defined in ISO 8501-1 as having the following characteristics:

"Very thorough blast cleaning: Near white metal, 85% clean. The surface shall be free from visible oil, dirt and grease, from poorly adhering mill scale, rust, paint coatings and foreign matter. The metal has a greyish color. Any traces of contamination shall be visible only as slight stains in the form of spots or stripes."

Spraying Method

Airless spraying techniques involve paint being "forced out of an orifice at high pressure, 5 to 35 MPa". The paint appears to form a coating "sheet" to ensure a uniform and continuous coating layer. This uniformity is important as even the smallest discrepancy in the coating can lead to accelerated corrosion. Once any small-sized area of the substrate becomes exposed it will begin to corrode. This corrosion continues under the protective layer in the adjoining coated areas in all directions, even if the coating has not been damaged.

Good surface preparation is essential and it profoundly effects the performance of the protective coating. Poor surface preparation invariably develops a poor adhesive bond between the coating and the substrate and causes premature coating failure. Hence, the surface preparation and airless spraying shall be done in an "Enclosed Area" wherein humidity and corrosion may be controlled prior to delivery of the Steel Pipe Piles at the project site.

On-site repairs

A special touch up materials shall be provided by the supplier/contractor and shall be done either by the use of a spray or manual brush with the objective of having a final homogeneous coating. The special touch up materials shall be used in repairing damages caused by handling and transporting of the Steel Pipe Piles.

WELDING REQUIREMENTS

The welding material used for the production of steel piles by circumferential welding of steel pile or in the attachment of accessories shall have a tensile strength not less than the following test standards.

JIS Z 3211	-	Covered Electrodes for Mild Steel
JIS Z 3213	-	Covered Electrodes for High Tensile Strength Steel
JIS Z 3312	-	MAG Welding Solid Wires for Mild
JIS Z 3313	-	Flux Cored Wives for Gas Shielded and self-shielded Metal Arc Welding of Mild Steel, High Strength Steel and Low Temperature Service Steel
JIS Z 3352	-	Submerged Arc Welding Fluxes for Carbon Steel and Low Alloy Steel

EXECUTION

MARKING

The pile shall be marked on with durable paint indicating:

1. Serial Number, marked close to both ends
2. Date of Arrival, marked same as (1)
3. Length of pile, marked same as (1)
4. Meters mark in two faces, throughout the length

DOCUMENTS TO BE SUBMITTED

1. Steel Pipe manufacturing plan (Steel pipe production plan, welding method, welding material, production location, production method, transportation, etc.)
2. Design plan
3. Manufacturing process
4. Shipment method and stacking plan
5. Steel pipe inspection certificate
6. Size inspection record
7. Radiographic Test record

STEEL PIPE PILES

The Contractor shall submit to the Engineer three (3) copies of test reports by the approved steel mill certifying that the steel pipe pile meets the requirements specified in these technical specifications.

PILE SPLICING

General Provision

1. The alignment of piles shall be plumb and the length of upper and lower segment shall be in accordance in the approved plans.
2. Lower segment of piles should be spliced with the upper segment piles prior to the conduct of actual driving.
3. The splice shall be embedded at least 4m from the design depth elevation.
4. Splice welding shall conform to the welding requirements of this section.
5. The welder shall be accredited by TESDA.

REINFORCED CONCRETE

The requirements regarding testing of concrete and reinforcement used in the concrete filler and cage bars of steel pipe piles shall be in accordance with Section "Reinforced Concrete".

STORAGE AND HANDLING

1. Piles may be stored in open air but on wooden sleepers to be placed in a manner so as not to cause excessive bending.
2. Piles shall be stacked on a stable yard and shall not be stacked more than three (3) tiers high.
3. All piles shall be carefully lifted at the location of the lifting points as indicated in the Drawings. Other practical and convenient methods may be used subject to the approval of the Engineer.

DRIVING OF PILES

A diesel or hydraulic pile hammer shall be used for driving the steel pipe piles.

The required weight of ram for the diesel pile hammer 2.5 tons or at least 25% (1/4) of the weight of longest pile.

Piles driven shall be held firmly in position in axial alignment with the hammer by means of leads of adequate length. Approved cushions shall be provided to the pile butts.

BEARING POWER OF PILES

Each pile shall be driven to attain not less than the required minimum bearing power shown in the pile schedule, as determined by the Hiley's Formula as follows:

$$\text{For Diesel Pile Hammer : } R = \frac{1}{6} \times \frac{2WH}{S + 2.54}$$

where : R = allowable bearing capacity of pile (tf)

W = weight of ram (tf)

H = fall of ram (cm)

S = set (cm)

In case of the use of hydraulic pile hammer, the computed minimum bearing power shall be submitted to the Project Development Department (PDD) and shall be evaluated and approved by the Designing Engineer.

DRIVING RECORDS

The Contractor shall keep complete and accurate piling records. Two (2) signed copies of these records shall be submitted to the Engineer not more than 48 hours from the date of works detailed therein. The pile records shall always be submitted with sufficient time for the Engineer's approval.

The records shall contain the following information:

1. Pile reference number
2. Pile type and Steel Grade
3. Pile Length
4. Commencing surface level and final toe level
5. Depth driven, time, date when piles were driven
6. Where required the number of blows to drive each 250 mm over the last 2.5 meter shall be recorded
7. Comments regarding unusual/unexpected driving conditions

INTERRUPTED DRIVING

When driving is stopped before final penetration is reached and/or refusal is attained, the record of pile penetration shall be taken only after a minimum of 30 cm. (12 in.) total penetration has been obtained on resumption of driving.

ALIGNMENT TOLERANCE

Piles driven shall be within the allowable tolerance in alignment of 10 cm. (4 in.) in any direction.

DAMAGED AND MISDRIVEN PILES

1. Piles shall not be more than 10 cm. (4 in.) out of place at cut-off level. All steel pipe piles shall not be more than 2% out of plumb.
2. Any pile damaged by improper driving or driven out of its proper location, or driven out of elevation fixed on the plans, shall be corrected correspondingly at the Contractor's expense by any of the following methods:
 - a. Withdrawal of the pile and replacement by a new pile.
 - b. Driving a second pile adjacent to the defective one.
 - c. Splicing an additional length.

The method to be adopted in each case shall be at the discretion of the Engineer.

ITEM 17 : CONSTRUCTION JOINTS

SCOPE OF WORK

This item shall consist of the manufacturing and installation of construction joints / expansion joints in accordance with the details, and at the locations, lines, grades and dimensions shown in the drawings.

MATERIAL REQUIREMENTS

1. All construction joints / expansion joints shall be hot-dipped galvanized inside and out in accordance with international standards for galvanizing BS EN1460.
2. Painted finish shall be rejected.
3. All steel gratings and angle bars for construction joints / expansion joints shall be hot-dipped galvanized except for the nuts, washers and bolts which shall be stainless steel.
4. Welding shall be in accordance with the AWS Code and as herein specified or any other welding standard, approved by the Engineer.

The Contractor shall be required to submit test certificates for steel materials for the construction / expansion joints used in its manufacture; and for hot-dip galvanizing which shall meet or exceed the specifications under "Zinc Coating".

EXECUTION

DELIVERY, STORAGE AND INSTALLATION

1. Upon delivery at site, the hot-dipped galvanized construction joints / expansion joints shall not be subjected to the following activities:
 - a. Re-fabrication
 - b. Cutting
 - c. Grinding
 - d. Welding
 - e. Sawing
 - f. Any hot works or similar activities
2. Stainless steel nuts and bolts may be tack welded using stainless steel welding rods.
3. The construction joints / expansion joints shall not be exposed to sea water and other corrosive chemicals or substances prior to installation.

ITEM 18 : ZINC (HOT-DIP GALVANIZED) COATINGS ON IRON AND STEEL

SCOPE OF WORK

This specification covers the requirements for zinc coating (galvanizing) by the hot-dip process on iron and steel products made from rolled pressed and forged shapes, casting, plates, bars and strips.

This specification covers both fabricated and un-fabricated products, for example, assembled steel products, structural steel fabrications, large tubes already bent or welded before galvanizing, and wire work fabricated from uncoated steel wire. It also covers steel forgings and iron castings incorporated into pieces fabricated before galvanizing or which are too large to be centrifuged (or otherwise handled to remove excess galvanizing bath metal).

MATERIAL REQUIREMENTS

STEEL OR IRON

The specification, grade or designation, and type and degree of surface contamination of the iron or steel in articles to be galvanized shall be supplied by the purchaser to the hot-dip galvanizer prior to galvanizing.

The presence in steels and weld metal, in certain percentages, of some elements such as silicon, carbon and phosphorus tends to accelerate the growth of the zinc-iron alloy layer so that the coating may have a matte finish with a little or no outer zinc layer.

EXECUTION

FABRICATION

The design and fabrication of the product to be galvanized shall be in accordance to the plans and specifications. ASTM Practices A 143, A 384 and A 385 provide guidance for steel fabrication for optimum hot-dip galvanizing and shall be complied with in both design and fabrication.

CASTINGS

The composition of heat treatment of iron and steel castings shall conform to specifications designated by the purchaser. Some types of castings have been known to show potential problems being embrittled during normal thermal cycle of hot-dip galvanizing. The requirements for malleable iron castings to be galvanized are stipulated in ASTM specification A 47.

ZINC

The zinc used in the galvanizing bath shall conform to ASTM Specification B 6. If a zinc alloy is used as the primary feed to the galvanizing bath, then the base material used to make that alloy shall conform to ASTM Specification B 6.

BATH COMPOSITION

The molten metal in the working volume of the galvanizing bath shall contain not less than an average value of 98.0% zinc by weight.

COATING PROPERTIES

Table 1 – Minimum Average Coating Thickness Grade by Material Category

Material Category	All Specimens Tested Steel Thickness Range (Measured), mm (in.)				
	< 1/16 (<1.6)	1/16 to < 1/8 (1.6 to < 3.2)	1/8 to < 3/16 (3.2 to 4.8)	> 3/16 to < 1/4 (> 4.8 to < 6.4)	≥ 1/4 (≥ 6.4)
Structural Shapes & Plate	45	65	75	85	100
Strip and Bar	45	65	75	85	100
Pipe and Tubing	45	45	75	75	75
Wire	35	50	60	65	80

COATING THICKNESS

The average thickness of coating for all specimens tested shall conform to the requirements of Table 1 for the categories and thickness of the material being galvanized. Minimum average thickness of coating for any individual specimen is one coating grade less than that required in Table 1. Where products consisting of various material thicknesses or categories are galvanized, the coating thickness grades of each thickness range and material category of material shall be shown in Table 1. The specification of coating thickness heavier than those required by Table 1 shall be subject to mutual agreement between the galvanizer and Engineer.

For articles whose surface area is greater than 100,000 mm² (160 in.²) (multi-specimen articles), each test article in the sample must meet the appropriate minimum average coating thickness grade requirements of Table 1. Each specimen coating thickness grade comprising that overall average for each test article shall average not less than one coating grade below that required in Table 1.

For articles whose surface area is equal to or less than 100,000 mm² (160 in.²) (single-specimen articles), the average of all test articles in the sample must meet the appropriate minimum average coating thickness grade requirements of Table 1. For each test article, its specimen coating thickness shall not be less than one coating grade below that required in Table 1.

No individual measurement or cluster of measurements at the same general location on a test specimen shall be cause for rejection under this specification provided that when those measurements are averaged with the other dispersed measurements to determine the specimen coating thickness grade for that specimen, the requirements of the above specifications as appropriate are met.

The coating thickness grades in Table 1 represent the minimum value obtainable with a high level of confidence for the ranges typically found in each material category. While most coating thicknesses will be in excess of those values, some materials in each category may be less reactive (for example, because of chemistry or surface condition) than other materials of the steel category spectrum. Therefore, some articles may have a coating grade at or close to the minimum requirements shown in Table 1. In such cases, the precision and accuracy of the coating thickness measuring technique should be taken into consideration when rejecting such articles for coating thickness below that is required by this specification.

FINISH

The coating shall be continuous (except as provided below), and as reasonably smooth and uniform in thickness as the weight size and shape of the item. Except for local excess coating thickness which would interfere with the use of the product or make it dangerous to handle (edge tears or spikes), rejection for non-uniform coating shall be made only for plainly visible excess coating not related to design factors such as holes, joints, or special drainage problems. Since surface smoothness is a relative term, minor roughness that does not interfere with the intended use of the product, or roughness that is related to the as-received (un-galvanized) surface condition, steel chemistry to zinc shall not be grounds for rejection.

Surfaces that remain uncoated after galvanizing may be renovated in accordance with the methods in ASTM Practice A 780 provided that the following conditions are met:

1. Each area subject to renovation shall be 25mm (1 in.) or less in its narrowest dimension.
2. The total area subject to renovation on each article shall be no more than $\frac{1}{2}$ of 1% of the accessible surface area to be coated on that article, or 22,500mm² (36 in.²) per ton of piece weight, whichever is less. Inaccessible surface areas are those which cannot be reached for appropriate surface preparation and application of repair materials as described in ASTM Practice A 780.
3. The thickness of renovation shall be that is required by the thickness grade for the appropriate material category and thickness range in Table 1 in accordance with the coating thickness requirements, except that for renovation using zinc paints, the thickness of renovation shall be 50% higher than that required by table 1, but not greater than 0.0254mm (4.0 mils).
4. When areas requiring renovation exceed the criteria previously provide, or are inaccessible for repair, the coating shall be rejected.

THREADED COMPONENTS IN ASSEMBLIES

The zinc coating on external threads shall not be subjected to a cutting, rolling or finishing tool operation, unless specifically authorized by the purchaser. Internal threads may be tapped or retapped after galvanizing. Coatings shall conform to the requirements of ASTM Specification A 153/A 153 M.

APPEARANCE

Upon shipment from the galvanizing facility, galvanized articles shall be free from uncoated areas, blisters, flux deposits and gross dross inclusions. Lumps, projections, globules or heavy deposits of zinc which will interfere with the intended use of the material will not be permitted. Plain holes of 12.5mm (1/2 in.) diameter or more shall be clean and reasonably free from excess zinc. Marks in the zinc coating caused by tongs or other items used in handling the article during the galvanizing operation shall not be cause for rejection unless such marks have exposed the base metal, and the bare metal areas exceed the criteria provided in number 1 and 2 of Subsection "Finish".

Whenever dross is present in a form other than finely dispersed pimples in the coating and is present in such amount as to be susceptible to mechanical damage, it will be considered as "gross".

ADHERENCE

The zinc coating shall withstand handling consistent with the nature and thickness of the coating and the normal use of the article, without peeling or flaking. Although some material may be formed after galvanizing, in general the zinc coating on the articles covered by this specification is too heavy to permit severe bonding without damaging the coating.

SAMPLING

A lot is a unit of production or shipment from which a sample may be taken for testing. Unless otherwise agreed upon between the galvanizer and the purchaser, or established within this specification, the lot shall be as follows:

1. For testing at a galvanizer's facility, a lot is one or more articles of the same type and size comprising a single order or a single delivery load, whichever is smaller, or any number of articles identified as a lot by the galvanizer, when these have been galvanized within a single production shift and in the same bath.
2. For test by the purchaser after delivery, the lot consists of the single order or the single delivery load, whichever is smaller, unless the lot identify, established in accordance with the above, is maintained and clearly indicated in the shipment by the galvanizer.

The method of selection and number of test specimens shall be agreed upon between the galvanizer and the purchaser. Otherwise, the test specimens shall be selected random from each lot. In this case, the minimum number of specimens from each lot shall be as follows:

Number of Pieces in Lot	Number of Specimens
3 or less	All
4 to 500	3
501 to 1,200	5
1,201 to 3,200	8
3,201 to 10,000	13
10,001 and over	20

A test specimen which fails to conform to any requirement of this specifications shall not be used to determine the conformance to other requirements.

TEST REQUIREMENTS

Magnetic Thickness Measurements:

The thickness of the coating shall be determined by magnetic thickness gauge measurements in accordance with ASTM Practice E 376. For each specimen, five or more measurements shall be made at points widely dispersed throughout the volume occupied by the specimen so as to represent as much as practical, the entire surface area of the test specimen. The average of the five or more measurements thus made for each specimen is the specimen coating thickness.

For articles whose surface area is greater than 100,000 mm² (160 in²), in the average of the three specimen coating thickness grades comprising each test article is the average coating thickness for that test article. A specimen must be evaluated for each steel category and material thickness within the requirements for each specimen of the test article

For articles whose surface area is equal to or less than 100,000 mm² (160 in²), the average of all specimen coating thickness grades is the average coating thickness for the sample.

The use of magnetic measurement method is appropriate for larger articles, and may be appropriate for smaller articles when such is practical using ASTM Practice E 376.

Stripping Method

The average weight of coating may be determined by stripping a test article, a specimen removed from a test article, or group of test articles in the case of very small items such as nails, etc., in accordance with Test method ASTM A 90/A 90m. The weight of coating per unit area thus determined is converted to equivalent coating thickness values in accordance with Table 2, Coating Thickness Grade (rounding up or down as appropriate). The thickness of coating thus obtained is the test article coating thickness, or in the case of a specimen removed from a test article, is the specimen average coating thickness.

Table 2 – Coating Thickness Grade ^A

Coating Grade	mils	oz/ft ²	μm	g/m ²
35	1.4	0.8	35	245
40	1.4	1.0	45	320
50	2.0	1.2	50	355
55	2.2	1.3	55	390
60	2.4	1.4	60	425
65	2.6	1.5	65	460
75	3.0	1.7	75	530
80	3.1	1.9	80	565
85	3.3	2.0	85	600
100	3.9	2.3	100	705

^A Conversions in Table 2 are based on the metric thickness value equivalents from the next earlier version, using conversion factors consistent with Table X 2.1 in Specification A 653/A 653M, rounded to the nearest 5 μm (0.0002 in.). The conversion factors used are: mils = μm x 0.03937; oz/ft² = μm x 0.002318; g/m² = μm x 7.067.

Weighing Before or After Galvanizing

The average of coating may be determined by weighing articles before and after galvanizing, subtracting the first weigh from the second and dividing the result by the surface area. The first weigh shall be determined after pickling and drying, and the second after cooling to ambient temperature. The weight of coating per unit area thus determined is converted to equivalent coating thickness values according to Table 2 (rounding up or down as appropriate). The thickness of coating thus obtained is the test article coating thickness.

Microscopy

The thickness of coating may be determined by cross-sectional and optical measurement in accordance with ASTM Test Method B 487. The thickness thus determined is a point value. No less than five such measurements shall be made at locations on the test article which are as widely dispersed as practical, so as to be representative of the whole surface of the test article. The average of no less than five such measurement is the specimen coating thickness.

Adhesion

Determine adhesion of the zinc coating to the surface of the base metal by cutting or prying with the point of a stout knife, applied with considerable pressure in a manner tending to remove a portion of the coating. The adhesion shall be considered inadequate if the coating flakes off in the form of a layer of the coating so as to expose the base metal in advance of the knife point. Do not use testing carried out at edges or corners (points of lowest coating adhesion) to determine adhesion of the coating. Likewise, do not use removal of small particles of the coating by paring or whittling to determine failure.

Embrittlement

Test for embrittlement may be made in accordance with ASTM Practice A 143

The galvanized article should withstand a degree of bending substantially the same as the ungalvanized article. Flaking or spalling of the galvanized coating is not be constructed as an embrittlement failure.

Inspection, Rejection and Retest

The material shall be inspected at the galvanizer's plant prior to shipment. However, by agreement the purchaser may make the tests which govern the acceptance or rejection of the materials in his own laboratory or elsewhere.

When inspection of materials to determine conformity with the visual requirements of Subsection "Finish" warrants rejection of a lot, the galvanizer may sort the lot and submit it once again for acceptance after he has removed any nonconforming articles and replace them with conforming articles.

Materials have been rejected for reasons other than embrittlement may be stripped and re-galvanized, and again submitted for inspection and test at which time they shall conform to the requirements of this inspection.

Transport and Storage

Galvanized components shall, wherever possible, be transported and stored under dry, well-ventilated conditions to prevent the formation of wet storage staining.

Either zinc phosphate or chromate passivation treatment after galvanizing may be used to minimize the wet storage staining which may occur on articles unable to be stored in dry, well-ventilated conditions.

Provided the coating thickness complies with the requirements of Subsection "Coating Thickness", no further remedial action is required to the stained areas.

ITEM 19 : MOORING AND FENDERING SYSTEM

SCOPE OF WORK

1. The work includes furnishing of all labor, materials and equipment to complete the installation of mooring bollards and fenders in piers/wharves.
2. The work shall include the supply, transport, handling, storage and installation of fenders systems in the newly constructed piers.
3. The Contractor shall furnish and install the necessary fittings as shown on the drawings and/or specified.

Supplementary parts necessary to complete and install each item of works shall be included whether or not shown or specified. The Contractor shall furnish to relevant trades all anchors, fastenings, inserts, fittings, fixtures or the like to be installed on or required for securing the works.

The Contractor shall submit shop drawings of all fitting works prior to placing orders and commencement of any fabrication.

MATERIAL REQUIREMENTS

MOORING SYSTEM

Designated load capacity of mooring bollards shall be as shown in the drawings, and shall be referred to as the maximum load capacity. The mooring bollards shall be at rupture stage upon reaching the maximum load capacity.

Mooring bollards shall be of the dimensions, weights, capacities and designs as shown in the drawings and shall be fabricated by approved manufacturer with cast steel conforming to the requirements indicated in the plan/drawings, or approved equivalent.

The size of the bolts, nuts and washers shall be in accordance with the specifications provided in the plans/drawings. The anchor plate shall be connected to the holding down bolt as shown in the plans/drawings. All bolts, nuts, washers etc., that are exposed shall be hot-dip galvanized.

Samples of the bolts, nuts, washers and anchor plates shall be submitted to the Engineer for approval before being used in the Works.

The upper part of bollards and base plates which are not embedded in concrete shall be painted. The surface of bollards shall be cleaned thoroughly by wire brush or other means prior to painting to remove rust or any other contamination which may interfere with bond of paint to metal.

The exposed surface shall be coated with rust proof paint and finishing paint, which shall be coal-tar epoxy of 120m micron thickness in accordance with JIS K5623 or the approved standard.

Base Steel:

Chemical composition and mechanical properties of base metal to be used for fabrication of mooring bollard and its accessories shall comply with ASTM A36 and other required standard stated therein.

Concrete Foundation :

Concrete foundation for mooring bollards shall conform to the requirements of the Section concerning "Reinforced Concrete".

Visual Inspection :

All mooring bollards delivered to Site shall be inspected by the Engineer for any signs of flaws or defect inimical to usage.

Mill Test Certificates:

Two (2) copies of mill test reports shall be submitted certifying that materials meet the specified standards.

Test Inspection:

Inspection of all materials and methods of fabrication shall be carried out by the Contractor. However, the Engineer reserves the right to inspect all facilities at any time during the manufacture to ensure that the materials and workmanship are in accordance with Specifications and the best of workmanship.

FENDER SYSTEM

The rubber fenders should comply with the performance requirements specified in the table provided on the plan/drawings of Rubber Dock Fenders (RDF).

PHYSICAL PROPERTIES OF MATERIALS

The rubber for the fenders shall be of high quality natural rubber, synthetic rubber or mixed rubber blended with carbon black used in the rubber industry and shall have sufficient resilience and anti-ageing, weathering, abrasion, wear and oil resistant properties. The rubber dock fenders shall be free from bubbles, cracks and other harmful defects.

The physical properties of the rubber compound used for the fenders shall comply with the following requirements:

Physical Properties and Test Method

Test Item		Properties	Test Method	
Physical Test	Before Aging	Tensile Strength	Test piece: Dumbell No. 3	ASTM D412
		Elongation		ASTM D1456
		Hardness	Spring Type hardness test (Type A)	ASTM D2240
	After Aging	Tensile Strength	Aging by air heating: 70±1°C x 96 hours.	ASTM D412
		Elongation		ASTM D1456
		Hardness		ASTM D2240
	Compression Test		Heat treatment: 70±1°C x 22 hours.	ASTM D395

Note: Equivalent Standards are acceptable.

FITTINGS AND ANCHORAGE

Anchor bolts and connecting hardware shall be fabricated using type of steel specified and to the required shapes and sizes shown on the approved plan/drawings.

TESTING, SAMPLING, INSPECTION, ACCEPTANCE, MARKING AND PACKAGING

Testing

All rubber dock fenders shall be tested for performance. It shall pass the required energy absorption and reaction force at a certain deflection as indicated in the plan.

The Contractor shall be required to submit test certificates showing compliance to the above requirements. The test certificates shall be certified by an independent testing institute / organization recognized by the Authority.

The standard performance testing methodology shall be Method B, to wit:

1. Fender temperature shall be stabilized at 23 degrees plus or minus 5 degrees centigrade for at least 24 hours before compression testing.
2. Break-in of fender by deflecting 3 times to rated deflection.
3. Removed load from the RDF and allow recovering for a minimum of 1 hour.
4. Deflect RDF at speed of 2-8 cm/min once to rated deflection.

The testing apparatus shall be calibrated and certified within plus or minus 1% in accordance with ISO or equivalent JIS or ASTM requirements. Calibration shall be traceable to a national/international standard and shall be performed annually by an accredited third party organization. The RDF performance testing center shall be subjected to accreditation by PPA and notation and /or certification by DPWH-BRS prior to acceptance.

Inspection

All fenders of each type shall be inspected for compliance to specified dimensions and all fenders shall be inspected by the Engineer for any sign of flaw or defect inimical to its use.

All anchor bolts and fittings shall be inspected. The material used for the fabrication of bolts and fittings shall be covered by the manufacturer's certified mill certificate and shall be verified by the Authority.

All RDF items/units shall be clearly numbered and marked indicated the following:

Acceptance Tolerance

The acceptance tolerance shall be based on the following:

1. Fender Dimension

Length	:	-2% to +4%
Width	:	-2% to +4%
Height	:	-2% to +4%
Thickness	:	-2% to +8%
2. Anchor Bolt Holes in Fender

Diameter of the Hole	:	+2.0mm
Pitch of the Hole	:	+4.0mm
3. Acceptance tolerance for all fenders supplied shall be as follows:

E = Energy absorption,	E ≥ Specified E but not less than 10% of the specified E
R = Reaction force,	R ≤ Specified R but not more than 10% of the specified R

Marking

All fender units shall be clearly numbered and marked. Each fender shall have the following markings.

1. Fender type and manufacturer's name or trade mark
2. Production serial number
3. Date of manufacture or its abbreviation
4. Main dimensions
5. Project identification as follows:

Name of Port/Project: _____

Year supplied _____

Packaging

The fenders shall be packaged on wooden crate or wrapped individually with Polypropylene sheets except when shipped containerized. The bolts and fittings should be placed in crates and suitably treated for protection when transported by sea and stored in port areas.

EXECUTION

MOORING / FENDERING SYSTEM

All units shall be installed at the locations shown on the drawings and as directed by the Engineer.

ITEM 20 : ELECTRICAL WORKS

SCOPE OF WORK

The work to be done shall consist of furnishing, delivering and installing electrical materials / fixtures completed in accordance with all the details of the electrical works as shown on the drawings including materials, labor, tools and equipment and all incidental works as found necessary.

Refer to electrical plans/drawings for location and extent of work involved.

GENERAL REQUIREMENTS

- a) All works shall be done in accordance with the requirements of the publications and agencies having jurisdiction, as well as the requirements of the approved standards.
 1. National Fire Protection Association - (NFPA)
 2. National Electrical Manufacturer Association - (NEMA)
 3. Underwriter Laboratories, Inc. - (UL)
 4. Philippine Electrical Code - (PEC)
Philippine National Standard - (PNS)
 5. Federation Specification:
Circuit Breaker, Molded Case, Branch
Circuit and Service
 6. American National Standard Institute - (ANSI)
 7. American Society for Testing and Materials - (ASTM)
 8. Illuminating Engineering Society - (IES)
 9. Light Emitting Diode - (LED)
- b) The electrical power of the Port lighting system will be connected to the Main Disconnect Panel (MDP) located on the concrete pedestal post. While the supply voltage should be 230 volts, single phase (1Ø), and 60 hertz.
- c) The Contractor shall employ a licensed Registered Electrical Engineer or Master electrician to perform or to supervise and to conduct the continuous inspection of all electrical work.
- d) The Contractor shall first obtain approval from the Authority before procurement, fabrication or delivery of electrical materials to the site. Partial submittals will not be acceptable and will be returned without review. Submittals shall include the Manufacturer's Name, Trade Name, Place of Manufacture, Catalog Model or Number, Nameplate Data, Size, Layout Dimensions, Capacity, Project Specification and Paragraph Reference, Technical Society Publication References and other information necessary to establish contract compliance of each item to be furnished.
- e) All excavations fill and backfill and concrete works involved herein, shall be carried to the required elevations and shall conform to the provisions of specification under Earthwork and Concrete Construction of this tender document.

- f) The materials and equipment to be furnished shall be standard products of reputable manufacturer engaged in the reproduction of such materials and equipment.
- g) All permits and electrical fees required for this work shall be obtained at the expense of the Contractor. The Contractor shall furnish the Engineer-in-Charge, the final Certificates of Inspections and approval from the proper government authorities after the completion of work. The Contractor shall prepare all as- built plans and all other paper works as required by the enforcing authorities.
- h) The Contractor shall furnish and install electrical materials as shown in the drawings. A licensed Electrical Engineer or Master Electrician is required to implement the installation of the electrical system.
- i) Electrical installation shall conform to the requirements of Philippine Electrical Code (PEC) and the other approved standards.
- j) The contractor shall install all electrical works with the supervision of the qualified Registered Electrical Engineer (REE) or Master Electrician. All electrical installation applications regardless of capacity and voltage whether new, addition or revision shall be accompanied by electrical plans signed and sealed by a duly licensed Professional Electrical Engineer (PEE).

MATERIAL REQUIREMENTS

All materials shall be brand new and shall be of the approved type meeting all the requirements of the Philippine Electrical Code and bearing the Philippine Standard Agency (PSA) mark.

PRODUCTS

WIRES AND CABLES

The conductor material to be furnished and installed shall be copper wire Heat-Resistant Thermoplastic (THHN/THWN-2). All conductors shall be rated 600 volts insulation and shall be standard for all sizes.

CONDUIT AND FITTINGS

Underground PVC conduit shall be polyvinyl chloride with concrete covered. It shall be manufactured to schedule 40 outside diameter. All fittings and bends shall be solvent bonded using manufacturers recommended product.

LED FLOODLIGHT FIXTURE 200 WATT

Specifications:

Rated	: 200 watt LED Floodlight Fixture or equivalent
Input Voltage	: AC 85-265 / 50-60 HZ
Luminous Flux	: 26000 - 28000 LM
Color Temperature	: 5500-6500k / Daylight
Light Source	: 4 layer of High Brightness LED Module
Material	: Die Cast Aluminum Alloy Housing
Beam Angle	: 120 degrees
Lifetime	: > 50,000 hours
IP Rating	: IP 66 outdoor (water resistant, excellent for outdoor use)

Switches:

Weatherproof die cast aluminum toggle switch (NEMA-3R) attached to Single Angle Bar Floodlight Steel Tapered Lamp Post.

SINGLE ANGLE BAR FLOODLIGHT STEEL TAPERED LAMP POST

Lamp Post shall be 10.0 m ht. Single Angle Bar Floodlight steel tapered lamp post, furnished installed and tested as shown on the approved plans. The post/s shall be dimensioned for a wind velocity of 185 km/hr. It shall be locally fabricated or manufactured. The post shall be Hot – Dipped Galvanized, prime-coated with red lead and shall be painted at site with the final coating preferably aluminum paint to be approved by the Engineer.

PANEL BOARD

Panel board shall conform as shown on the approved plans with respect to supply characteristics, rating of main lugs or main circuit breaker, number and ratings and capacities of branch circuit breakers.

Panel board shall consist of a factory completed dead front assembly mounted in an enclosing NEMA-3R cabinet consisting of code gauge galvanized sheet steel box with trim and door.

Main and branch circuit breakers for panel board shall have the rating, capacity and number of poles as shown on the approved plans. Breakers shall be thermal magnetic type solid state-type with interrupting capacity of 10,000 amperes symmetrical minimum. Breaker terminal shall be UL listed as suitable for type of conductor provided. Breaker shall be the bolt-in type (that is, bolted to the current carrying bus). Plug-in circuit breakers are not acceptable.

EXECUTION

INSTALLATION

Single Angle Bar Floodlight Steel Tapered Lamp Post shall be installed as shown on the approved plans.

Pole Setting: Depth as shown on the approved plans.

Construction of lamp post foundation shall be in accordance with the shape and dimensions as shown on the approved plans.

Excavations / backfilling required before /after installation of lamp post foundation with the trench shall conform to the provisions of Earthwork and Concrete construction.

Metering: the local utility company of Port of Bulado, Negros Oriental is responsible for the supply and installation of measuring equipment, and its accessories, but it is part of the contractor responsibility and expense to contact them about this.

WORKMANSHIP

The work throughout shall be executed in the best and most thorough manner under the direction of and at the satisfaction of the Registered Electrical Engineer or Master Electrician, who will interpret the intent meaning of the drawings and specification and shall have the power to reject any work and materials which in his judgment, are not in full accordance therewith.

TESTING OPERATIONS

When the electrical installation is completed, the Contractor shall test the installed electrical materials and equipment in the presence of Registered Electrical Engineer or Master Electrician. The system shall be free from any defects, shorts or grounds. The Contractor at no extra cost shall furnish all necessary instruments and personnel required for the testing.

GUARANTEE

Upon completion and before final acceptance of the work, the Contractor shall furnish the Engineer a written guarantee stating that all works executed are free from defects on materials and workmanship. The guarantee shall be for a period of one year from the date of the final acceptance. Any work that becomes defective during the said period shall be corrected / replaced by the Contractor at his own expense in a manner satisfactory to the Authority.

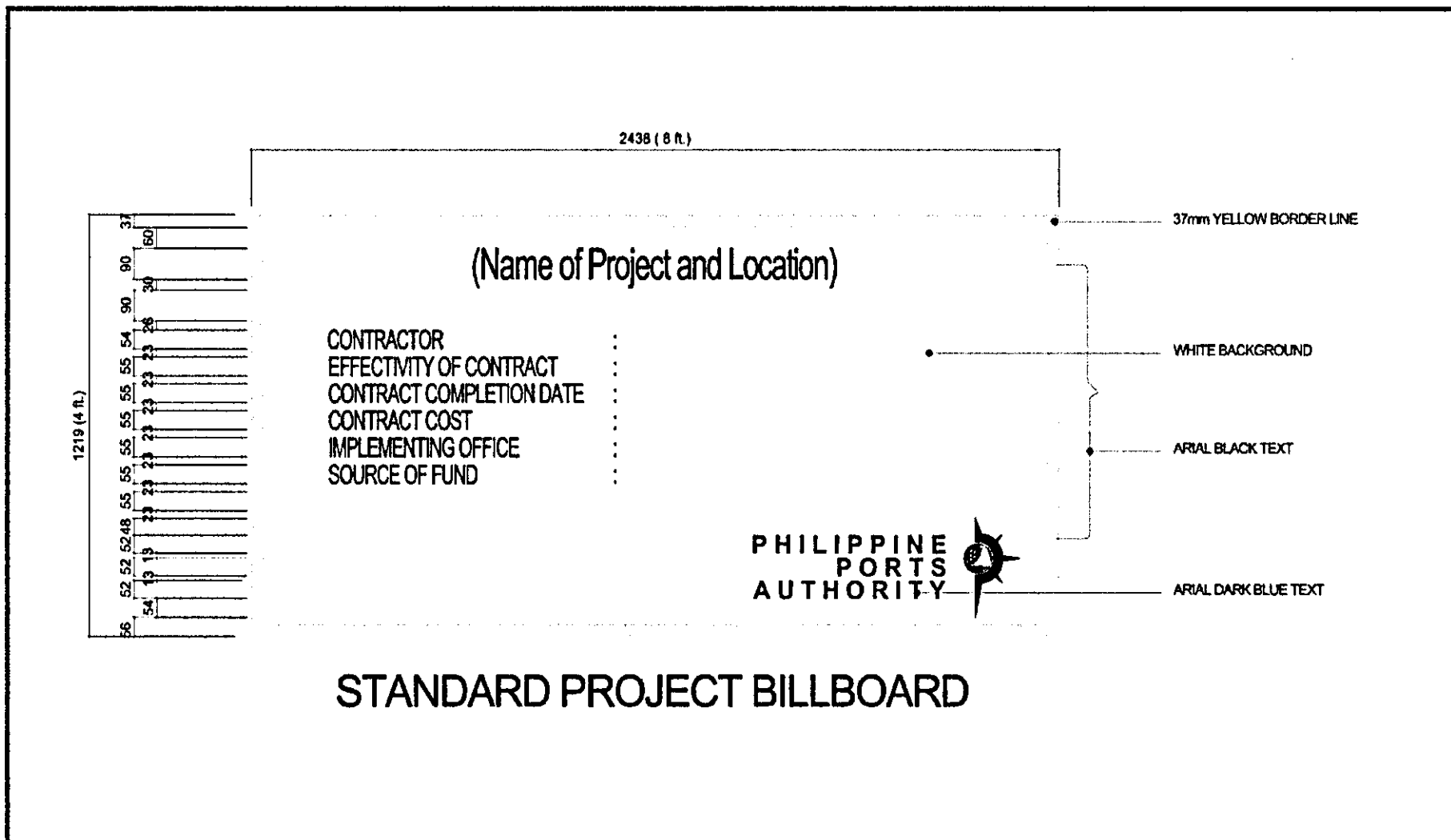
ITEM 21 : PROJECT BILLBOARD**SPECIFICATION**

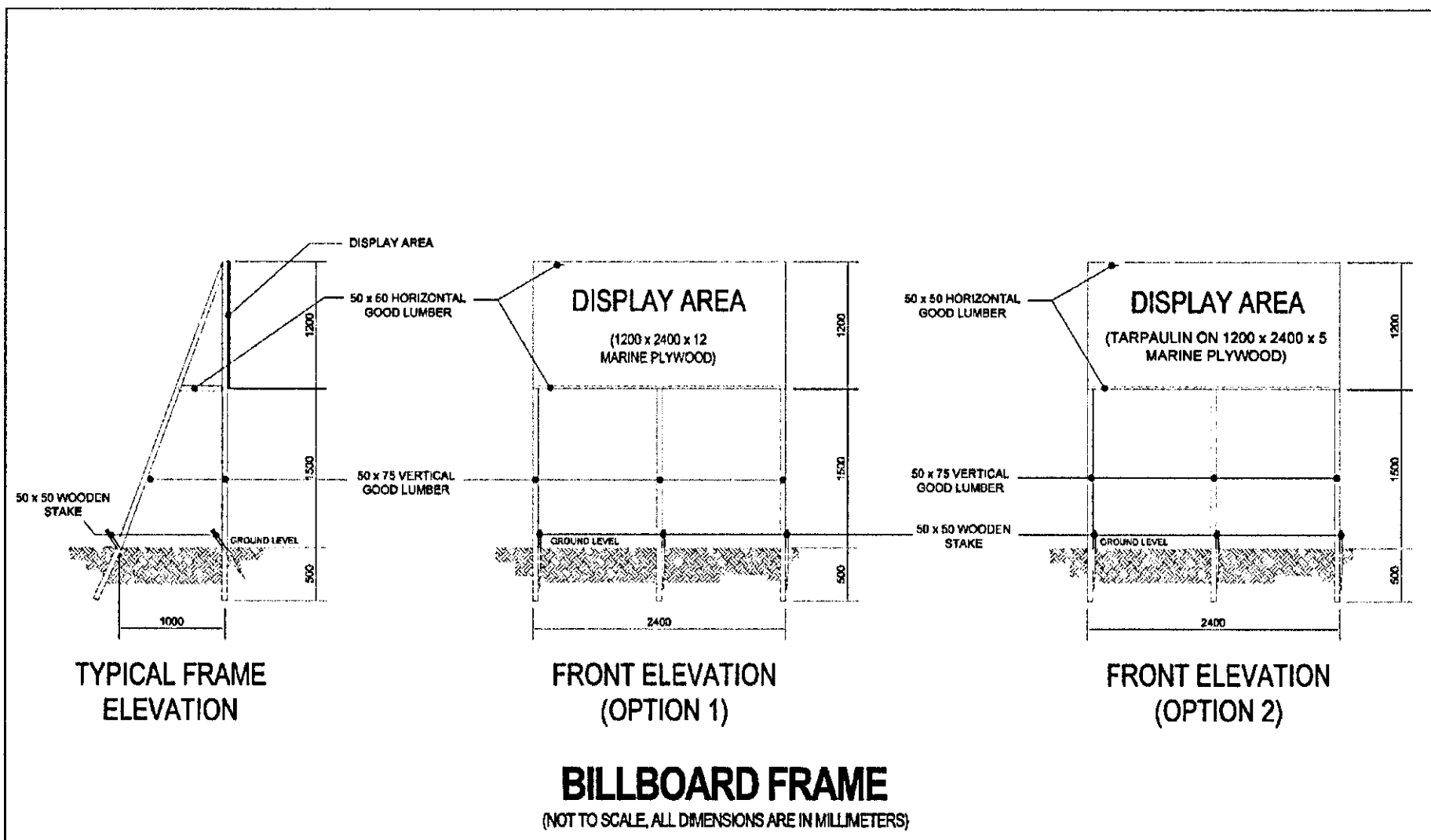
The Project Billboard shall be installed at location(s) designated by the Engineer.

The size and specifications of materials for the standard billboard shall be 4ft. x 8ft. (1,200mm x 2,400mm) using ½ inch (12mm) marine plywood or tarpaulin poster on 3/16 inch (5mm) marine plywood.

Project billboards shall not contain Name(s) and/or picture(s) of any personages.

See attached drawings for further details of the standard billboard.





ITEM 22 : SAFETY SIGNAGES AND BARRICADES

DESCRIPTION

This work includes the furnishing and installing of safety signages and barricades in accordance with the specifications and to the details shown below in the drawings, or as directed by the Engineer.

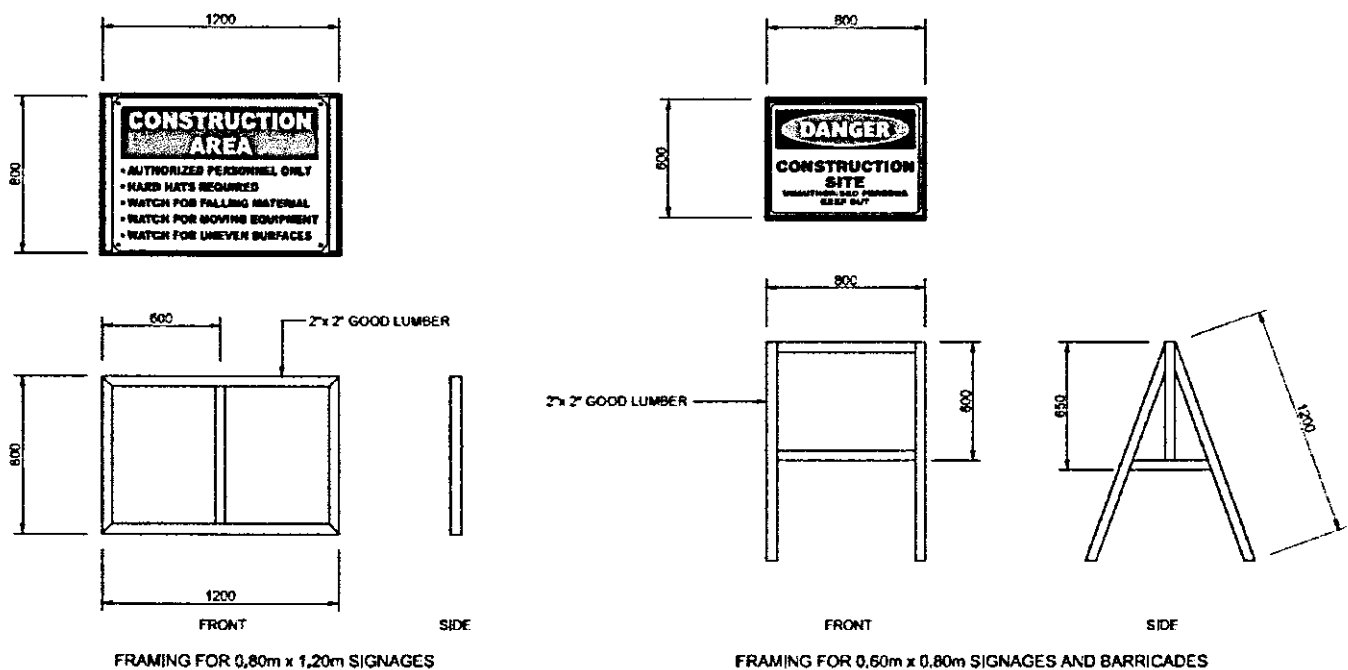
SPECIFICATION

The Signage's and Barricades shall be installed at location(s) designated by the Engineer.

The sizes of the standard signages shall be 2-2/3ft x 4ft (800mm X 1,200mm) for fixed type and 2ft x 2-2/3ft (600mm x 800mm) for mobile type. For barricade standard 2ft x 2-2/3ft (600mm x 800mm) shall be provided.

The materials to be used for signages and barricades are ½ inch (12mm) marine plywood or tarpaulin poster on 2" x 2" (50mm x 50mm) good lumber frame (see drawing below).

The printing or painting shall be the discretion of the Engineer.



STANDARD PLAN FOR SIGNAGES AND BARRICADES

SECTION VII

*DRAWINGS
(APPROVED PLANS)*