

2. The nominal dimensions and unit weights of bars shall be in accordance with the following table:

Nominal Diameter (mm)	Nominal Perimeter (mm)	Nominal Sectional Area (sq. mm)	Unit Weight (kg/m)
10	31.4	78.54	0.616
12	37.7	113.10	0.888
16	50.3	201.10	1.579
20	62.8	314.20	2.466
25	78.5	490.90	3.854
28	88.0	615.70	4.833
32	100.5	804.20	6.313
36	113.1	1,017.60	7.991
40	125.7	1,256.60	9.864
50	157.1	1,963.50	15.413

3. Welding of reinforcing bars shall only be permitted where shown; all welding shown shall be performed in accordance with AWS D 12.1.
4. Exposed reinforcement bars, dowels and plates intended for bonding with future extensions shall be protected from corrosion.
5. Supports shall be provided in conformance with ACI 315 and ACI 318, unless otherwise indicated or specified.
6. **Concrete Protection for Reinforcement**
- a. The minimum concrete cover of reinforcement shall be as shown below unless otherwise indicated in the drawings.
- b. Tolerance for Concrete Cover of Reinforcing Steel other than Tendons.

Minimum Cover

7.5cm or more (marine structures and concrete cast against and permanently exposed to earth)

DESIGN STRENGTH OF CONCRETE

Concrete for structural parts or members such as RC curbs, beams, retaining walls, columns, footings, stair landings and mooring blocks shall develop a minimum 28-day compressive cylinder strength of 24.00 MPa (3,500 psi) as indicated in the drawings. For the lean concrete, a compressive strength of 17.25 MPa (2,500 psi) shall be used.

TRIAL BATCH FOR CONCRETE

Thirty (30) calendar days before the start of concreting works, the Contractor shall submit design mixes and the corresponding test result made on sample thereof. Sampling and testing shall be in accordance with the ASTM Standard procedures for sampling and testing for the particular design strength(s) required.

The particulars of the mix such as the slump and the proportionate weights of cement, saturated surface dry aggregates and water used shall be stated.

The design mix for concrete to be used shall be submitted together with at least three (3) standard cylinder samples for approval at least one (1) month prior to the start of each concreting schedule. Such samples shall be prepared in the presence of the Engineer.

Standard laboratory strength tests for the 7, 14 and 28 days periods shall be taken to all concrete samples in addition to routine field tests, at cost to the Contractor. Only design mixes represented by test proving the required strength for 7, 14 and 28 days tests shall be allowed.

The cost of sampling, handling and transporting samples from jobsite to the laboratory and the cost of subsequent tests made until the desired mix is attained shall be for the account of the Contractor.

Slump Test shall be made in conformance with ASTM C143, and unless otherwise specified by the Engineer, slump shall be within the following limits:

Structural Element	Slump for Vibrated Concrete	
	Minimum	Maximum
Pavement Concrete	25mm	50mm
Pre-cast Concrete	50mm	70mm
Lean Concrete	100mm	200mm
Sacked Concrete	25mm	50mm
All other Concrete	50mm	90mm

Sampling : Provide suitable facilities and labor for obtaining representative samples of concrete for the Contractor's quality control and the Engineer's quality assurance testing. All necessary platforms, tools and equipment for obtaining samples shall be furnished by the Contractor.

MIXING CONCRETE

1. GENERAL

- a. Concrete shall be thoroughly mixed in a mixer of an approved size and type that will insure a uniform distribution of the materials throughout the mass.
- b. All concrete shall be mixed in mechanically operated mixers. Mixing plant and equipment for transporting and placing concrete shall be arranged with an ample auxiliary installation to provide a minimum supply of concrete in case of breakdown of machinery or in case the normal supply of concrete is disrupted. The auxiliary supply

of concrete shall be sufficient to complete the casting of a section up to a construction joint that will meet the approval of the Engineer.

- c. Equipment having components made of aluminum or magnesium alloys, which would be in contact with plastic concrete during mixing, transporting or pumping of Portland cement concrete, shall not be used.
- d. Concrete mixers shall be equipped with adequate water storage and a device for accurately measuring and automatically controlling the amount of water used.
- e. Materials shall be measured by weighing. The apparatus provided for weighing the aggregates and cement shall be suitably designed and constructed for this purpose. The accuracy of all weighing devices except that for water shall be such that successive quantities can be measured to within one percent of the desired amounts. The water measuring device shall be accurate to plus or minus 0.5 percent. All measuring devices shall be subject to the approval of the Engineer. Scales and measuring devices shall be tested at the expense of the Contractor as frequently as the Engineer may deem necessary to insure their accuracy.
- f. Weighing equipment shall be insulated against vibration or movement of other operating equipment in the plant. When the entire plant is running, the scale reading at cut-off shall not vary from the weight designated by the Engineer by more than one percent for cement, 1-½ percent for any size of aggregate, or one percent for the total aggregate in any batch.
- g. Manual mixing of concrete shall not be permitted unless approved by the Engineer.

2. MIXING CONCRETE AT SITE

- a. Concrete mixers may be of the revolving drum or the revolving blade type and the mixing drum or blades shall be operated uniformly at the mixing speed recommended by the manufacturer.

The pick-up and throw-over blades of mixers shall be restored or replaced when any part or section is worn 20 mm or more below the original height of the manufacturer's design. Mixers and agitators which have an accumulation of hard concrete or mortar shall not be used.

- b. When bulk cement is used and the volume of the batch is 0.5 m³ or more, the scale and weigh hopper for Portland cement shall be separate and distinct from the aggregate hopper or hoppers.

The discharge mechanism of the bulk cement weigh hopper shall be interlocked against opening before the full amount of cement is in the hopper. The discharging mechanism shall be interlocked against opening when the amount of cement in the hopper is underweight by more than one percent or overweight by more than 3 percent of the amount specified.

- c. When the aggregates contain more water than the quantity necessary to produce a saturated surface dry condition, representative samples shall be taken and the moisture content determined for each kind of aggregate.
- d. The batch shall be so charged into the mixer that some water enter in advance of cement and aggregates. All water shall be in the drum by the end of the first quarter of the specified mixing time.

- e. Cement shall be batched and charged into the mixer by such means that it will not result in loss of cement due to the effect of wind, or in accumulation of cement on surfaces of conveyors or hoppers, or in other conditions which reduce or vary the required quantity of cement in the concrete mixture.
- f. Where required, synthetic fibrous reinforcement shall be added directly to the concrete mixer after placing the sufficient amount of mixing water, cement and aggregates.
- g. The entire contents of a batch mixer shall be removed from the drum before materials for a succeeding batch are placed therein. The materials composing a batch except water shall be deposited simultaneously into the mixer.
- h. All concrete shall be mixed for a period of not less than 3 minutes after all materials, including water, are in the mixer. During the period of mixing, the mixer shall operate at the speed for which it has been designed.
- i. Mixers shall be operated with an automatic timing device that can be locked by the Engineer. The time device and discharge mechanism shall be so interlocked that during normal operation no part of the batch will be discharged until the specified mixing time has elapsed.
- j. The first batch of concrete materials placed in the mixer shall contain a sufficient excess of cement, sand, and water to coat the inside of the drum without reducing the required mortar content of the mix. When mixing is to cease for a period of one hour or more, the mixer shall be thoroughly cleaned.
- k. In case of rubble concrete, proper mixture and placing of concrete and stones/rocks shall be in accordance to the approved plan. Methodology of work shall be approved by the Engineer.

3. MIXING CONCRETE IN TRUCKS

- a. Truck mixers, unless otherwise authorized by the Engineer, shall be of the revolving drum type, watertight, and so constructed that the concrete can be mixed to insure a uniform distribution of materials throughout the mass. All solid materials for the concrete shall be accurately measured and charged into the drum at the proportioning plant. Except as subsequently provided, the truck mixer shall be equipped with a device by which the quantity of water added can be readily verified. The mixing water may be added directly to the batch, in which case a tank is not required. Truck mixers may be required to be provided with a means by which the mixing time can be readily verified by the Engineer.
- b. The maximum size of batch in truck mixers shall not exceed the minimum rated capacity of the mixer as stated by the manufacture and stamped in metal on the mixer. Truck mixing shall, unless otherwise directed, be continued for not less than 100 revolutions after all ingredients, including water, are in the drum. The mixing speed shall not be less than 4 rpm, nor more than 6 rpm.
- c. Mixing shall begin within 30 minutes after the cement has been added either to the water or aggregate, but when cement is charged into a mixer drum containing water or surface-wet aggregate and when the temperature is above 32 °C, this limit shall be reduced to 15 minutes. The limitation in time between the introduction of the cement to the aggregate and the beginning of the mixing may be waived when, in the judgment of the Engineer, the aggregate is sufficiently free from moisture, so that there will be no harmful effects on the cement.

- d. When a truck mixer is used for transportation, the mixing time in stationary mixer may be reduced to 30 seconds and the mixing completed in a truck mixer. The mixing time in truck mixer shall be as specified for truck mixing.

JOINTS

1. No reinforcement, corner protection angles or other fixed metal items shall be run continuously through joints containing expansion-joint filler, through crack-control joints in slabs on grade and vertical surfaces.

2. **Preformed Expansion Joint Filler**

- a. **Joints with Joint Sealant**

At expansion joints in concrete slabs to be exposed, and at other joints indicated to receive joint sealant, preformed expansion-joint filler strips shall be installed at the proper level below the elevation with a slightly tapered, dressed-and-oiled wood strip temporarily secured to the top thereof to form a groove. When surface dry, the groove shall be cleaned of foreign matter, loose particles, and concrete protrusions, then filled flush approximately with joint sealant so as to be slightly concave after drying.

- b. **Finish of concrete at joints**

Edges of exposed concrete slabs along expansion joints shall be neatly finished with a slightly rounded edging tool.

- c. **Construction Joints**

Unless otherwise specified herein, all construction joints shall be subject to approval of the Engineer. Concrete shall be placed continuously so that the unit will be monolithic in construction. Fresh concrete may be placed against adjoining units, provided the set concrete is sufficiently hard not to be injured thereby. Joints not indicated shall be made and located in a manner not to impair strength and appearance of the structure. Placement of concrete shall be at such rate that the surface of concrete not carried to joint levels will not have attained initial set before additional concrete is placed thereon. Lifts shall terminate at such levels as are indicated or as to conform to structural requirements as directed. If horizontal construction joints are required, a strip of 25mm square-edged lumber, beveled to facilitate removal shall be tacked to the inside of the forms at the construction joint. Concrete shall be placed to a point 25mm above the underside of the strip. The strip shall be removed one hour after the concrete has been placed. Any irregularities in the joint line shall be leveled off with a wood float, and all laitance removed. Prior to placing additional concrete, horizontal construction joints shall be prepared.

Construction Joint which is not indicated in the Drawings shall be located as to least affect the strength of the structure. Such locations will be pointed out by the Engineer.

PREPARATION FOR PLACING

Hardened concrete, debris and foreign materials shall be removed from the interior of forms and from inner surfaces of mixing and conveying equipment. Reinforcement shall be secured in position, and shall be inspected, and approved before placing concrete. Runways shall be

provided for wheeled concrete-handling equipment. Such equipment shall not be wheeled over reinforcement nor shall runways be supported on reinforcement.

Notice of any concreting operations shall be served to the Engineer at least three (3) days ahead of each schedule.

PLACING CONCRETE

1. Handling Concrete

Concrete shall be handled from mixers and transported to place for final deposit in a continuous manner, as rapidly as practicable, and without segregation or loss of ingredients until the approved unit of work is completed. Placing will not be permitted when the sun, heat, wind or limitations of facilities furnished by the Contractor prevent proper finishing and curing of the concrete. Concrete shall be placed in the forms, as close as possible in final position, in uniform approximately horizontal layers not over 40cm deep. Forms splashed with concrete and reinforcement splashed with concrete or form coating shall be cleaned in advance of placing subsequent lifts. Concrete shall not be allowed to drop freely more than 1.5m in unexposed work nor more than 1.0 m in exposed work; where greater drops are required, tremie or other approved means shall be employed.

2. Time Interval between Mixing and Placing

Concrete mixed in stationary mixers and transported by non-agitating equipment shall be placed in the forms within 30 minutes from the time ingredients are charged into the mixing drum. Concrete transported in truck mixers or truck agitators shall be delivered to the site of work, discharged in the forms within 45 minutes from the time ingredients are discharged into the mixing drum. Concrete shall be placed in the forms within 15 minutes after discharged from the mixer at the jobsite.

3. Hot Weather Requirements

The temperature of concrete during the period of mixing while in transport and/or during placing shall not be permitted to rise above 36 °C. Any batch of concrete which had reached a temperature greater than 36 °C at any time in the aforesaid period shall not be placed but shall be rejected, and shall not thereafter be used in any part of the permanent works.

a. Control Procedures

Provide water cooler facilities and procedures to control or reduce the temperature of cement, aggregates and mixing handling equipment to such temperature that, at all times during mixing, transporting, handling and placing, the temperature of the concrete shall not be greater than 36 °C.

b. Cold Joints and Shrinkage

Where cold joints tend to form or where surfaces set and dry too rapidly or plastic shrinkage cracks tend to appear, concrete shall be kept moist by fog sprays, or other approved means, applied shortly after placement, and before finishing.

c. Supplementary Precautions

When the aforementioned precautions are not sufficient to satisfy the requirements herein above, they shall be supplemented by restricting work during evening or night. Procedure shall conform to American Concrete Institute Standard

ACI 305.

4. Conveying Concrete by Chute, Conveyor or Pump

Concrete may be conveyed by chute, conveyor, or pump if approved in writing. In requesting approval, the Contractor shall submit his entire plan of operation from the time of discharge of concrete from the mixer to final placement in the forms, and the steps to be taken to prevent the formation of cold joints in case the transporting of concrete by chute, conveyor or pump is disrupted. Conveyors and pumps shall be capable of expeditiously placing concrete at the rate most advantageous to good workmanship. Approval will not be given for chutes or conveyors requiring changes in the concrete materials or design mix for efficient operation.

a. Chutes and Conveyors

Chutes shall be of steel or steel lined wood, rounded in cross section rigid in construction, and protected from overflow. Conveyors shall be designed and operated and chute sections shall be set, to assure a uniform flow of concrete from mixer to final place of deposit without segregation of ingredients, loss of mortar, or change in slump. The discharged portion of each chute or conveyor shall be provided with a device to prevent segregation. The chute and conveyor shall be thoroughly cleaned before and after each run. Waste material and flushing water shall be discharged outside the forms.

b. Pumps shall be operated and maintained so that a continuous stream of concrete is delivered into the forms without air pockets, segregation or changes in slump. When pumping is completed, concrete remaining in the pipeline shall be ejected and wasted without contamination of concrete already placed. After each operation, equipment shall be thoroughly cleaned and the flushing water shall be splashed outside the forms.

5. Wall and Abutments

No load shall be placed upon finished walls, foundations or abutments until authorized by the Engineer. Minimum time before loading shall be 7 days.

6. Concrete Placing on Wharf

When placing concrete on wharf decks, the Contractor shall:

Ensure that rate of placing is sufficient to complete proposed placing, finishing and curing operations within the scheduled time; that experienced finishing machine operators and concrete finishers are provided to finish the deck; that curing equipment and finishing tools and equipment are at the site of work and in satisfactory condition for use.

Immediately prior to placing, the Contractor shall place scaffolding and wedges and make necessary adjustments. Care shall be taken to ensure that settlement and deflection due to added weight of concrete will be minimal. The Contractor shall provide suitable means to readily permit measurement of settlement deflection as it occurs.

Should any event occur which, in opinion of the Engineer, would prevent the concrete conforming to specified requirements, the Contractor shall discontinue placing of concrete until corrective measures are provided satisfactory to the Engineer. If satisfactory measures are not provided prior to initial set of concrete in affected areas, the Contractor shall discontinue placing concrete and install a bulkhead

at a location determined by the Engineer. Concrete in place beyond bulkheads shall be removed. The Contractor shall limit the size of casting to that which can be finished before beginning of initial set.

COMPACTION

1. Immediately after placing, each layer of concrete shall be completed by internal concrete vibrators supplemented by hand-spading, rodding, and tamping. Tapping or other external vibration of forms will not be permitted unless specifically approved by the Engineer. Vibrators shall not be used to transport concrete inside the forms. Internal vibrators submerged in concrete shall maintain a speed of not less than 7,000 impulses per minute. The vibrating equipment shall at all times be adequate in number of units and power to properly consolidate all concrete.
2. Spare units shall be on hand as necessary to insure such adequacy. The duration of vibrating equipment shall be limited to the time necessary to produce satisfactory consolidation without causing objectionable segregation. The vibrator shall not be inserted into the lower courses that have begun to set. Vibrator shall be applied vertically at uniformly spaced points not further apart than the visible effectiveness of the machine.

EPOXY BONDING COMPOUND

Before depositing new concrete on or against concrete that has set, the surfaces of the set concrete shall be thoroughly cleaned so as to expose the coarse aggregate and be free of laitance, coatings, foreign matter and loose particles. Forms shall be re-tightened. The cleaned surfaces shall be moistened, but shall be without free water when concrete is placed. ASTM C 881. Provide Type I for bonding hardened concrete to hardened concrete; Type II for bonding freshly mixed concrete to hardened concrete; and Type III as a binder in epoxy mortar or concrete, or for use in bonding skid-resistant materials to hardened concrete. Provide Class B if placement temperature is between 4 to 16 °C; or Class C if placement temperature is above 16°C.

FINISHES OF CONCRETE

Within 12 hours after the forms are removed, surface defects shall be remedied as specified herein. The Temperature of the concrete, ambient air and mortar during remedial work including curing shall be above 10 °C. Fine and loose material shall be removed. Honeycomb, aggregate pockets, voids over 13mm in diameter, and holes left by the rods or bolts shall be cut out to solid concrete, reamed, thoroughly wetted, brush-coated with neat cement grout, and filled with mortar. Mortar shall be a stiff mix of one part Portland cement to not more than 2 parts fine aggregate passing the No. 16 mesh sieve, with a minimum amount of water. The color of the mortar shall match the adjoining concrete color. Mortar shall be thoroughly compacted in place. Holes passing entirely through walls shall be completely filled from the inside face by forcing mortar through the outside face. Holes which do not pass entirely through wall shall be packed full. Patchwork shall be finished flush and in the same plane as adjacent surfaces. Exposed patchwork shall be finished to match adjoining surfaces in texture and color. Patchwork shall be damp-cured for 72 hours. Dusting of finish surfaces with dry material or adding water to concrete surfaces will not be permitted.

CONCRETE FINISHING DETAILS

1. Concrete Paving

After concrete is placed and consolidated, slabs shall be screeded or struck off. No further finish is required.

2. Smooth Finish

Required only where specified; screed concrete and float to required level with no coarse aggregate visible. After surface moisture has disappeared and laitance has been removed, the surface shall be finished by float and steel trowel. Smooth finish shall consist of thoroughly wetting and then brush coating the surfaces with cement to not more than 2 parts fine aggregate passing the no. 30 mesh sieve and mixed with water to the consistency of thick paint.

3. Broom Finish

Required for paving; the concrete shall be screeded and floated to required finish level with no coarse aggregate visible. After the surface moisture has disappeared and laitance has been removed, surface shall be float-finished to an even, smooth finish. The floated surfaces shall be broomed with a fiber bristle brush in a direction transverse to the direction of the main traffic.

ITEM 07 : AGGREGATE BASE COURSE

SCOPE OF WORK

This Item shall consist of furnishing, placing and compacting an aggregate base course on a prepared subgrade/subbase in accordance with this Specification and lines, grades, thickness and typical cross-sections shown on the Plans or as established by the Engineer.

MATERIAL REQUIREMENTS

Aggregate base course shall consist of hard, durable particles or fragments of crushed stone, crushed slag or crushed or natural gravel and filler of natural or crushed sand or other finely divided mineral matter. The composite material shall be free from vegetable matters and lumps or balls of clay, and shall be of such nature that it can be compacted readily to form a firm, stable base.

In some areas where the conventional base course materials are scarce or non-available, the use of 40% weathered limestone blended with 60% crushed stones or gravel shall be allowed, provided that the blended materials meet the requirements of this Item.

The base material shall conform to the grading requirements of Table 3.1, whichever is called for in the Bill of Quantities.

Table 3.1 Grading Requirements

Sieve Designation		Mass Percent Passing	
Standard mm	Alternate US Standard	Grading A	Grading B
50	2"	100	
37.5	1 - 1/2"	-	100
25.0	1"	60 - 85	-
19.0	3/4"	-	60 - 85
12.5	1/2"	35 - 65	-
4.75	No. 4	20 - 50	30 - 55
0.425	No. 40	5 - 20	8 - 25
0.075	No. 200	0 - 12	2 - 14

The portion of the material passing the 0.075mm (No. 200) sieve shall not be greater than 0.66 (two-thirds) of the fraction passing the 0.425mm (No. 40) sieve.

The portion of the material passing the 0.425mm (No. 40) sieve shall have a liquid limit of not greater than 25 and a plasticity index of not more than 6 as determined by AASHTO T89 and T90, respectively.

The coarse aggregate retained on a 2.00mm (No. 10) sieve shall have a mass percent of wear not exceeding 50 by the Los Angeles Abrasion Test as determined by AASHTO T 96.

The material passing the 19mm (3/4 inch) sieve shall have a minimum soaked CBR-value of 80% tested according to AASHTO T 193. The CBR-value shall be obtained at the maximum dry density determined according to AASHTO T 180, Method D.

If filler, in addition to that naturally present, is necessary for meeting the grading requirements or for satisfactory bonding, it shall be uniformly blended with the crushed base course material on the road or in a pugmill unless otherwise specified or approved. Filler shall be obtained from sources approved by the Engineer, free from hard lumps and shall not contain more than 15 percent of material retained on the 4.75mm (NO. 4) sieve.

EXECUTION

PLACING

The aggregate base material shall be placed at a uniform mixture on a prepared sub-base (selected fill) in a quantity which will provide the required compacted thickness. When more than one layer is required, each layer shall be shaped and compacted before the succeeding layer is placed.

The placing of material shall begin at the point designated by the Engineer. Placing shall be from vehicles especially equipped to distribute the material in a continuous uniform layer or windrow.

The layer or windrow shall be of such size that when spread and compacted the finished layer be in reasonably close conformity to the nominal thickness shown on the Plans.

When hauling is done over previously placed material, hauling equipment shall be dispersed uniformly over the entire surface of the previously constructed layer, to minimize rutting or uneven compaction.

SPREADING AND COMPACTING

When uniformly mixed, the mixture shall be spread to the plan thickness, for compaction.

Where the required thickness is 150mm or less, the material may be spread and compacted in one layer. Where the required thickness is more than 150 mm, the aggregate base shall be spread and compacted in two or more layers of approximately equal thickness, and the maximum compacted thickness of any layer shall not exceed 150 mm. All subsequent layers shall be spread and compacted in a similar manner.

The moisture content of sub-base material shall, if necessary, be adjusted prior to compaction by watering with approved sprinklers mounted on trucks or by drying out, as required in order to obtain the required compaction.

Immediately following final spreading and smoothing, each layer shall be compacted to the full width by means of approved compaction equipment. Rolling shall progress gradually from the sides to the center, parallel to the centerline of the road and shall continue until the whole surface has been rolled. Any irregularities or depressions that develop shall be corrected by loosening the material at these places and adding or removing material until surface is smooth and uniform. Along curbs, headers, and walls, and at all places not accessible to the roller, the base material shall be compacted thoroughly with approved tampers or compactors.

If the layer of base material, or part thereof, does not conform to the required finish, the Contractor shall, at his own expense, make the necessary corrections.

Compaction of each layer shall continue until a field density of at least 100 percent of the maximum dry density determined in accordance with AASHTO T 180, Method D has been achieved. In-place density determination shall be made in accordance with AASHTO T 191/ASTM D 1556.

TRIAL SECTION

Before finish grade construction is started, the Contractor shall spread and compact trial sections as directed by the Engineer. The purpose of the trial sections is to check the suitability of the materials and the efficiency of the equipment and construction method which is proposed to be used by the Contractor. Therefore, the Contractor must use the same material, equipment and procedures that he proposes to use for the main work. One trial section of about 500 m² shall be made for every type of material and/or construction equipment/procedure proposed for use.

After final compaction of each trial section, the Contractor shall carry out such field density tests and other tests required as directed by the Engineer.

If a trial section shows that the proposed materials, equipment or procedures in the Engineer's opinion are not suitable for subbase, the material shall be removed at the Contractor's expense, and a new trial section shall be constructed.

If the basic conditions regarding the type of material or procedure change during the execution of the work, new trial sections shall be constructed.

SURVEYS AND SETTING OUT WORKS

Before the commencement of the pavement works, the Contractor together with the Engineer shall conduct topographic survey which will form the basis of quantity measurement.

The Contractor shall set out the works and shall be solely responsible for the accuracy of such setting-out.

Prior to placement of any material, the Contractor shall establish visible construction markers to clearly define horizontal limits of the Work.

TOLERANCES

The aggregate base course shall be laid to the designed level and transverse slopes shown on the Plans. The allowable tolerances shall be in accordance with following:

Permitted variation from design THICKNESS OF LAYER	± 10 mm
Permitted variation from design LEVEL OF SURFACE	+ 5 mm -10 mm
Permitted SURFACE IRREGULARITY Measured by 3-m straight-edge	5 mm
Permitted variation from design CROSSFALL OR CAMBER	± 0.2%
Permitted variation from design LONGITUDINAL GRADE over 25 m in length	± 0.1%

ITEM 08 : PORTLAND CEMENT CONCRETE PAVEMENT

SCOPE OF WORK

The works include the furnishing of all labor, materials and equipment required for the construction of gravel base course and concrete pavement. The works shall be in accordance with the lines and grades shown on the Drawings and in conformity with the Specifications.

MATERIAL REQUIREMENTS

Cement

Portland cement shall conform to the requirements of the Section "Reinforced Concrete".

Fine Aggregate

The fine aggregate shall be well-graded from coarse to fine and shall conform to the requirements of the Section "Reinforced Concrete".

Coarse Aggregate

Coarse aggregate shall conform to the requirements of the Section "Reinforced Concrete".

Water

Clean, fresh, potable water shall be used for the mixing of all concrete and mortar and shall be from a source approved by the Engineer. Sea water or brackish water shall not be used.

Admixture

Admixture shall only be used with the written permission of the Engineer. If air-entraining agents, water reducing agents, set retarders or strength accelerators are permitted to be used, they shall not be used in greater dosages than those recommended by the manufacturer, or as permitted by the Engineer. The cost shall be considered as already in the Contractor's unit cost bid for concrete.

TIE BARS AND SLIP BARS

Tie bars shall be deformed bars conforming to the requirements specified in AASHTO M 31 or M 42, except that rail steel shall not be used for tie bars that are to be bent and re-straightened during construction, sizes as indicated on the Drawings. The deformed bars shall be Grade 40 and shall be shipped in standard bundles, tagged and marked in accordance with the Code of Standard practice of the Concrete Reinforcement Steel Institute.

Slip bars shall be smooth round steel bars conforming to the requirements specified in AASHTO M 31 or plain M 42.

Joint Filler

Poured filler for joint shall conform to the requirements of AASHTO M173.

EXECUTION

Concrete Class

The concrete for pavement shall satisfy the following requirements:

Minimum 28-day comprehensive strength	:	24 MPa
Minimum Flexural Strength	:	3.8 MPa
Maximum Aggregate size	:	25 mm
Maximum water cement ratio	:	0.52

Proportioning, Consistency and Mixing of Concrete

The proportioning, consistency and mixing of concrete shall conform to the requirements of the Section "Reinforced Concrete".

Preparation

The base shall be watered and thoroughly moistened prior to placing of the concrete.

Formwork Construction

Formwork shall comply with the requirements of the Section "Reinforced Concrete". Forms shall be of steel, of an approved section and shall be straight and of a depth equal to thickness of the pavement at the edge. The base of the forms shall be of sufficient width to provide necessary stability in all directions. The flange braces must extend outward on the base not less than 2/3 the height of the form.

All forms shall be rigidly supported on a bed of thoroughly compacted material during the entire operation of placing and finishing the concrete. They shall be set with their faces vertical so as to produce a surface complying with the required tolerance.

Adjacent lanes may be used in lieu of forms for supporting finishing equipment provided that proper protection is afforded to the concrete of the adjacent lanes to prevent damage, and provided further that the surface of the concrete carrying the finishing equipment does not vary by more than 3mm in each meter length. Adjacent lanes in lieu of forms may not be used until the concrete is at least seven (7) days old. Flanged wheels of the finishing equipment shall not be operated on the concrete surface. The inside edge of supporting wheels of the finishing machine shall not operate closer than 100mm from the edge of the concrete lane.

Alternative to placing forms, slip-forming may be used. Slip-form paving equipment shall be equipped with the traveling side forms of sufficient dimensions, shape and strength to support the concrete laterally for a sufficient length of time during placement to produce pavement of the required cross section. No abrupt changes in longitudinal alignment of the pavement will be permitted. The horizontal deviation shall not exceed 20mm from the proper alignment established by the Engineer.

Joints

All joints, longitudinal, transverse, etc., shall be constructed as shown on the Drawings and shall be clean and free of all foreign material after completion of shoulder work prior to acceptance of the work and in accordance with the following provisions:

Longitudinal and Transverse Contact Joints:

Longitudinal contact joints are joints formed between lanes that are poured separately. Transverse contact joints are joints formed between segments of a lane that are poured separately. Transverse contact joints shall be formed perpendicular to pavement centerline at the end of each day of concrete placing, or where concreting has been stopped for 30 minutes or longer but not nearer than 1.5 meters from sawed contraction joints. All contact joints shall have faces perpendicular to the surface of the pavement. Tie bars of the size, length and spacing shown on the Drawings shall be placed across longitudinal and transverse contact joints.

Placing Concrete

The concrete shall be deposited and spread in order that segregation will not occur and place a uniform layer of concrete whose thickness is approximately 20 mm greater than that required for the finished pavement is placed. Rakes shall not be used for handling concrete.

In order to prevent the introduction into the concrete of earth and other foreign materials, the men whose duties require them to work in the concrete, shall in general, confine their movements to the area already covered with fresh concrete. Whenever it becomes necessary for these men to step out of the concrete, their footwear shall be washed or otherwise thoroughly cleaned before returning to the concrete. Repeated carelessness with regard to this detail will be deemed sufficient cause for removing and replacing such worker.

During the operation of striking off the concrete, a uniform ridge of concrete at least 70 mm in height shall be maintained ahead of the strike-off screed for its entire length. Except when making a construction joint, the finishing machine shall at no time be operated beyond that point where this surplus can be maintained in front of the strike-off screed.

After the first operation of the finishing machine, additional concrete shall be added to all low places and honeycombed spots and the concrete rescreeded. In any rescreeding, a uniform head of concrete shall be maintained ahead of the strike-off for its entire length. Honeycombed spots shall not be eliminated by tamping or grouting.

Workers on the job shall have mobile footbridges at their disposal so that they need not walk on the wet concrete.

In conjunction with the placing and spreading, the concrete shall be thoroughly spaded and vibrated along the forms, bulkhead, and joints.

The internal vibrators shall be of pneumatic, gas-driven, or electric type, and shall operate at a frequency of not less than 3,200 pulsations per minute.

Whenever the placing of the concrete is stopped or suspended for any reason, for a period of 30 minutes or longer, a suitable bulkhead shall be placed so as to produce a vertical transverse joint. If an emergency stop occurs within 2.5 meters of the contraction or an expansion joint the concrete shall be removed back to the joint. When the placing of the concrete is resumed, the bulkhead shall be removed and a new concrete placed and vibrated evenly and solidly against the face of previously deposited concrete. Any concrete

in excess of the amount needed to complete a given section or that has been deposited outside the forms shall not be used in the work.

The Contractor shall provide suitable equipment for protecting the fresh concrete in case of rain, such as screens which will cause the rain water to run off beyond the edges of the paving, rain proof tarpaulins or other methods approved by the Engineer. The equipment shall be sufficient to shelter from rain all areas equal to that paved in two hours of work.

Finishing Concrete

The concrete shall be compacted and finished by a mechanical, self-propelled finishing machine of approved type, having two independently operated screeds. If a machine possessing only one screed is approved, the screed will not be less than 450 mm wide and shall be equipped with compensating springs to minimize the effect of the momentum of the screed on the side forms. The number of driving wheels, the weight of the machine and the power of the motor shall be so coordinated as to prevent slippage. The top of the forms and the surface of the finishing machine wheels shall be kept free from concrete or dirt.

The machine shall at all times be in first-class mechanical condition and shall be capable of compacting and finishing the concrete as herein described. Any machine which causes displacement of the side forms from the line or grade to which they have been properly set, or causes undue delay due to mechanical difficulties, shall be removed from the work and replaced by a machine meeting the Specifications.

The finishing machine shall be operated over each section of pavement two or more times and at such intervals as will produce the desired results. Generally, two passes of the finishing machine are considered the maximum desirable.

The concrete shall be vibrated, compacted, and finished by a vibratory finishing machine. The vibratory machine shall meet the requirements for ordinary finishing, and shall be one of the following type:

1. The machine shall have two independently operated screeds; the front screed shall be equipped with vibratory units with a frequency of not less than 3,500 pulsations per minute. There shall be not less than one vibratory unit for each 2.5 meters length or portion thereof, of vibratory screed surface. The front screed shall not be less than 300mm wide and shall be equipped with a "bull nose" front edge built on a radius of not less than 50mm. This type of vibratory finishing machine shall be operated in such manner that each section of pavement will receive at least one vibratory pass, but not more than two passes, unless otherwise directed, or ;
2. The machine shall be equipped with an independently operated vibratory "pan" (or pans) and two (2) independently operated screeds, the "pan" shall be mounted in a manner that will permit it to come in contact with the forms and will permit vibration of the full width of lane simultaneously.

There shall be not less than one vibratory unit for each 2 m. length or portion thereof, of vibrating pan surface. The vibratory units in any individual pan shall be synchronized and have a frequency of not less than 3,500 pulsations per minute. The front screed shall be capable of operating in a position that will strike off the concrete at a sufficient height above the top of the forms to allow for proper compaction with the vibrating pan. This type of vibratory finishing machine shall be operated in such manner that each section of pavement will receive at least one vibratory pass but not more than two passes, unless otherwise directed.

After the final pass of the finishing machine and when the concrete has started to dry, the surface of the pavement shall be finished with an approved longitudinal float. The float may be operated either manually or by mechanical means. The float may be either of wood or metal shall be straight and smooth and light in weight so as not to displace or sink into the concrete surface.

To be effective, the float shall be at least 300mm wide and 3m long. When manually operated, the float shall be moved from edge to edge with a wiping motion and advance one (1) meter or more.

The succeeding trip shall overlap the previous trip. A light smoothing lute at least 3 meters long may be used provided approved by the Engineer.

The surface of the pavement shall be tested by the Contractor, before the final belting, with an approved standard straightedge 3 meter in length. Irregularities so detected shall be corrected immediately. Special attention shall be given to the concrete adjacent to transverse joints to insure that the edges thereof are not above the grade specified or the adjacent concrete below grade. All depressions or projections shall be corrected before any initial set has developed in the concrete.

After the concrete has been brought to the required grade, contour and smoothness, it shall be finished by passing over the concrete a drag of one or two burlap clothes, which give the surface the required roughness. The vehicles used to carry these cloths may be independent of the concrete-laying machine or may be incorporated with it and may be operated either by hand or mechanically.

Hand finishing will be permitted only on variable width sections of the pavement and other places where the use of the finishing machine would be impractical. Hand finishing shall be accomplished by means of the hand-operated strike-off template of either steel or steel-shod wood construction. The striking template shall be operated forward with a combined longitudinal and transverse motion and shall be so manipulated that neither end will be raised off the side forms. A similar tamper shall be used for tamping the concrete.

As soon as the concrete has attained its initial set, the edges of the pavement, the longitudinal joints, the construction dummy and expansion joints not sawn shall be carefully finished with an edging tool having radius of at least 5mm. The tools, the special accessories for cutting impressed joints and methods of workmanship shall be such as will produce a joint whose edges are of the same quality of concrete as the other portion of the pavement. Methods and workmanship which make use of excess mortar or grout in this area shall be eliminated. Unnecessary tool marks shall be eliminated during work, and the edges left smooth and true to line.

Striking Forms

Forms shall remain in place at least 12 hours after the concrete has been placed. When working conditions are such that the early strength gain of the concrete is delayed, the forms shall remain in place for a longer period, as directed by the Engineer. Bars or heavy load shall not be used against the concrete when still in the forms. Any damage to concrete resulting from form removal shall be repaired promptly by the Contractor as directed by the Engineer without any additional payment to the Contractor.

Curing Concrete

Unless otherwise ordered by the Engineer, curing of concrete shall be done by any method specified in the Section "Reinforced Concrete".

Cleaning and Sealing Joints

After completion of the required curing and before opening of the pavement to traffic, all joints shall be thoroughly cleaned of all concrete aggregate fragments or other materials.

After removal of side forms, the ends at transverse expansion joints at the edges of the pavement shall be carefully cleaned of any concrete within the expansion spaces for the entire depth of slab, care being taken not to injure the ends of the joints. Expansion and contraction joints shall then be poured with a hot joint sealer to the depth as indicated on the Drawings. Joint sealer shall be poured using approved hand pouring pots, with liquid at a temperature not less than that recommended by the approved manufacturer.

Opening to Traffic

The pavement shall be closed to traffic, including the vehicles of the Contractor, for a period of 10 days after the concrete is placed or longer if in the opinion of the Engineer, the weather conditions make it necessary to extend this time. The Contractor shall furnish, place and maintain satisfactory barricades and lights as directed, to exclude all traffic from the pavement.

Any damage to the pavement due to traffic shall be repaired or replaced at the expense of the Contractor. Paving mixers, mechanical concrete spreaders and finishers and other heavy paving equipment shall not be operated on completed concrete lanes in order to construct alternate lanes until after the regular curing period is completed. Even then, planks shall be laid on the finished pavement or other precautions taken to prevent damage to the concrete pavement.

Pavement Smoothness, Thickness and Tolerance

Portland cement concrete pavement shall be constructed to the designed level and transverse slope shown on the Drawing. The allowable tolerance shall be as listed hereunder:

- | | | |
|----|--|---------|
| 1. | Permitted variation from design thickness of layer | + - 5mm |
| 2. | Permitted variation from design level of surface | + - 5mm |

The thickness of the pavement will be determined by measurement of cores from the completed pavement in accordance with AASHTO T 148.

The completed pavement shall be accepted on a lot basis. A lot shall be considered as 2,500 sq.m of pavement. The last unit in each slab constitutes a lot in itself when its length is at least $\frac{1}{2}$ of the normal lot length. If the length of the last unit is shorter than $\frac{1}{2}$ of the normal lot length, it shall be included in the previous lot.

Other areas such as intersections, entrances, crossovers, ramp, etc., will be grouped together to form a lot. Small irregular areas may be included with other unit areas to form a lot.

ITEM 09 : MOORING AND FENDERING SYSTEM

SCOPE OF WORK

1. The work includes furnishing of all labor, materials and equipment to complete the installation of mooring bollards and fenders in piers/wharves.
2. The work shall include the supply, transport, handling, storage and installation of fenders systems in the newly constructed piers.
3. The Contractor shall furnish and install the necessary fittings as shown on the drawings and/or specified.

Supplementary parts necessary to complete and install each item of works shall be included whether or not shown or specified. The Contractor shall furnish to relevant trades all anchors, fastenings, inserts, fittings, fixtures or the like to be installed on or required for securing the works.

The Contractor shall submit shop drawings of all fitting works prior to placing orders and commencement of any fabrication.

MATERIAL REQUIREMENTS

MOORING SYSTEM

Designated load capacity of mooring bollards shall be as shown in the drawings, and shall be referred to as the maximum load capacity. The mooring bollards shall be at rupture stage upon reaching the maximum load capacity.

Mooring bollards shall be of the dimensions, weights, capacities and designs as shown in the drawings and shall be fabricated by approved manufacturer with cast steel conforming to the requirements indicated in the plan/drawings, or approved equivalent.

The size of the bolts, nuts and washers shall be in accordance with the specifications provided in the plans/drawings. The anchor plate shall be connected to the holding down bolt as shown in the plans/drawings. All bolts, nuts, washers etc., that are exposed shall be hot-dip galvanized.

Samples of the bolts, nuts, washers and anchor plates shall be submitted to the Engineer for approval before being used in the Works.

The upper part of bollards and base plates which are not embedded in concrete shall be painted. The surface of bollards shall be cleaned thoroughly by wire brush or other means prior to painting to remove rust or any other contamination which may interfere with bond of paint to metal.

The exposed surface shall be coated with rust proof paint and finishing paint, which shall be coal-tar epoxy of 120m micron thickness in accordance with JIS K5623 or the approved standard.

Base Steel:

Chemical composition and mechanical properties of base metal to be used for fabrication of mooring bollard and its accessories shall comply with ASTM A36 and other required standard stated therein.

Concrete Foundation :

Concrete foundation for mooring bollards shall conform to the requirements of the Section concerning "Reinforced Concrete".

Visual Inspection :

All mooring bollards delivered to Site shall be inspected by the Engineer for any signs of flaws or defect inimical to usage.

Mill Test Certificates:

Two (2) copies of mill test reports shall be submitted certifying that materials meet the specified standards.

Test Inspection:

Inspection of all materials and methods of fabrication shall be carried out by the Contractor. However, the Engineer reserves the right to inspect all facilities at any time during the manufacture to ensure that the materials and workmanship are in accordance with Specifications and the best of workmanship.

FENDER SYSTEM

The rubber fenders should comply with the performance requirements specified in the table provided on the plan/drawings of RDF.

PHYSICAL PROPERTIES OF MATERIALS

The rubber for the fenders shall be of high quality natural rubber, synthetic rubber or mixed rubber blended with carbon black used in the rubber industry and shall have sufficient resilience and anti-ageing, weathering, abrasion, wear and oil resistant properties. The rubber dock fenders shall be free from bubbles, cracks and other harmful defects.

The physical properties of the rubber compound used for the fenders shall comply with the following requirements:

Physical Properties and Test Method

Test Item		Properties	Test Method	
Physical Test	Before Aging	Tensile Strength	Test piece: Dumbell No. 3	ASTM D412
		Elongation		ASTM D1456
		Hardness	Spring Type hardness test (Type A)	ASTM D2240
	After Aging	Tensile Strength	Aging by air heating: 70±1°C x 96 hours.	ASTM D412
		Elongation		ASTM D1456
		Hardness		ASTM D2240
	Compression Test		Heat treatment: 70±1°C x 22 hours.	ASTM D395

Note : Equivalent Standards are acceptable.

FITTINGS AND ANCHORAGE

Anchor bolts and connecting hardware shall be fabricated using type of steel specified (ASTM A36) and to the required shapes and sizes shown on the approved plan/drawings.

TESTING, SAMPLING, INSPECTION, ACCEPTANCE, MARKING AND PACKAGING

Testing

Sample rubber dock fenders that shall be incorporated in the project shall be subjected to tests. It shall pass the required energy absorption and reaction force at a certain deflection as indicated in the plan.

The Contractor shall be required to submit test certificates showing compliance to the above requirements. The test certificates shall be certified by an independent testing institute / organization recognized by the Authority.

Ten percent (10%) of the total number of fenders to be supplied and rounded to a unit shall be tested for performance. The fender shall be compressed repeatedly three (3) times to the maximum deflection at the speed from 2 to 8 cm. per minute. The load and deflection values shall be recorded with the precision of 0.1tf and 0.5mm respectively. The results shall be plotted in the form of load-deflection-energy absorption curves. The average data obtained in the second and third test loading shall be considered as performance values.

Inspection

All fenders of each type shall be inspected for compliance to specified dimensions and all fenders shall be inspected for any sign of flaw or defect inimical to its use.

All anchor bolts and fittings shall be inspected. The material used for the fabrication of bolts and fittings shall be covered by the manufacturer's certified mill certificate and shall be verified by the Authority.

Acceptance Tolerance

The acceptance tolerance shall be based on the following:

1. Fender Dimension

Length	:	-2% to +4%
Width	:	-2% to +4%
Height	:	-2% to +4%
Thickness	:	-2% to +8%
2. Anchor Bolt Holes in Fender

Diameter of the Hole	:	+2.0mm
Pitch of the Hole	:	+4.0mm
3. Acceptance tolerance for all fenders supplied shall be as follows:

E = Energy absorption,	E ≥ Specified E but not to exceed 10%
R = Reaction force,	R ≤ Specified R but not less than 10%

Marking

All fender units shall be clearly numbered and marked. Each fender shall have the following markings.

1. Fender type and manufacturer's name or trade mark
2. Production serial number
3. Date of manufacture or its abbreviation

4. Main dimensions
5. Project identification as follows:

Name of Port/Project : _____

Year supplied : _____

Packaging

The fenders shall be packaged on wooden crate or wrapped individually with Polypropylene sheets except when shipped containerized. The bolts and fittings should be placed in crates and suitably treated for protection when transported by sea and stored in port areas.

EXECUTION

MOORING / FENDERING SYSTEM

All units shall be installed at the locations shown on the drawings and as directed by the Engineer.

ITEM 10 : PROJECT BILLBOARD

SPECIFICATION

The Project Billboard shall be installed at location(s) designated by the Engineer.

The size and specifications of materials for the standard billboard shall be 4ft. x 8ft. (1,200mm x 2,400mm) using ½ inch (12mm) marine plywood or tarpaulin poster on 3/16 inch (5mm) marine plywood.

Project billboards shall not contain Name(s) and/or picture(s) of any personages.

See attached drawings for further details of the standard billboard.

2438 (8 ft.)

(Name of Project and Location)

CONTRACTOR
EFFECTIVITY OF CONTRACT
CONTRACT COMPLETION DATE
CONTRACT COST
IMPLEMENTING OFFICE
SOURCE OF FUND



PHILIPPINE PORTS AUTHORITY

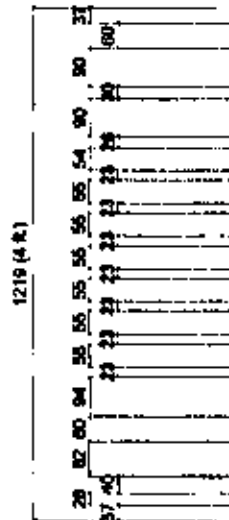
37mm YELLOW BORDER LINE

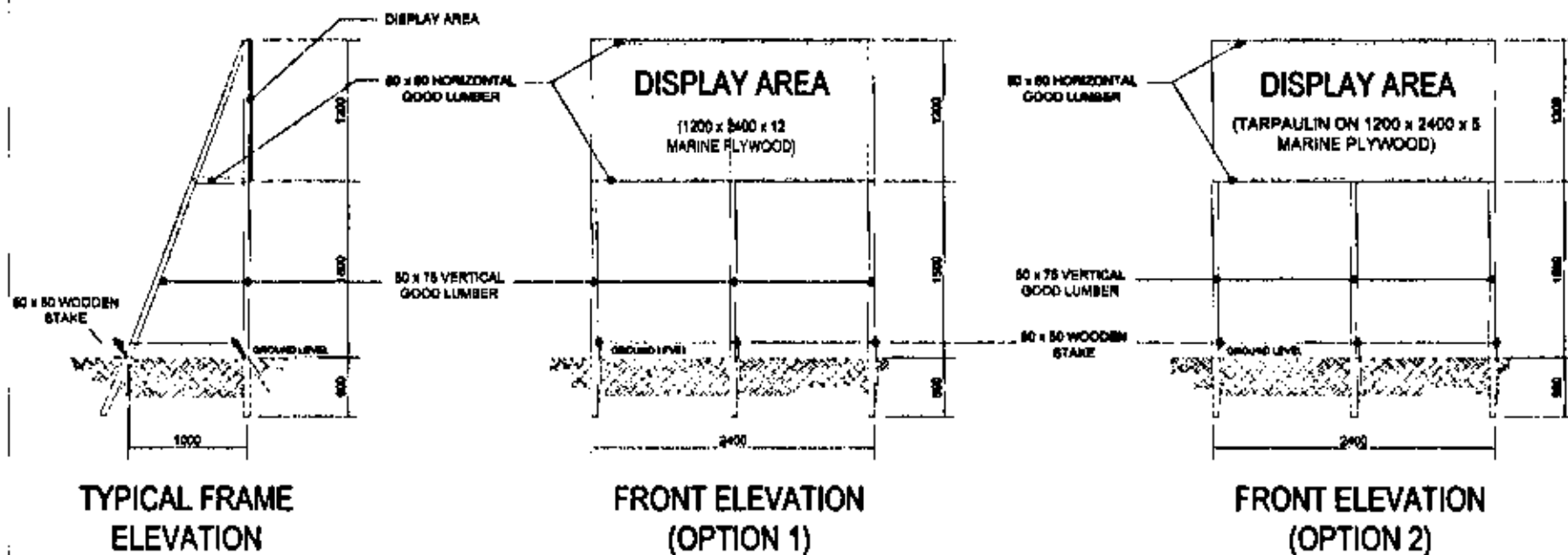
WHITE BACKGROUND

ARIAL BLACK TEXT

ARIAL BLUE TEXT

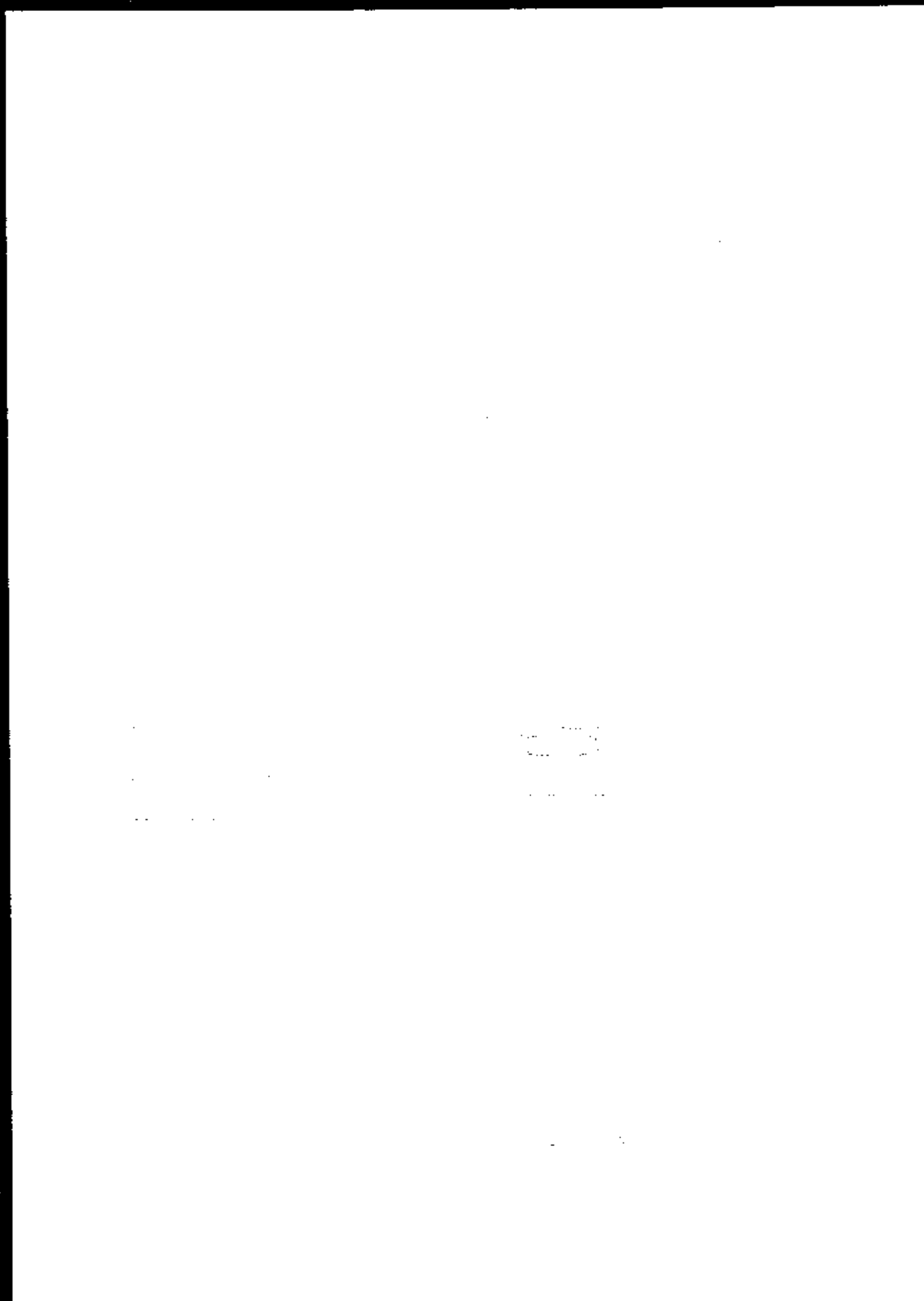
STANDARD PROJECT BILLBOARD

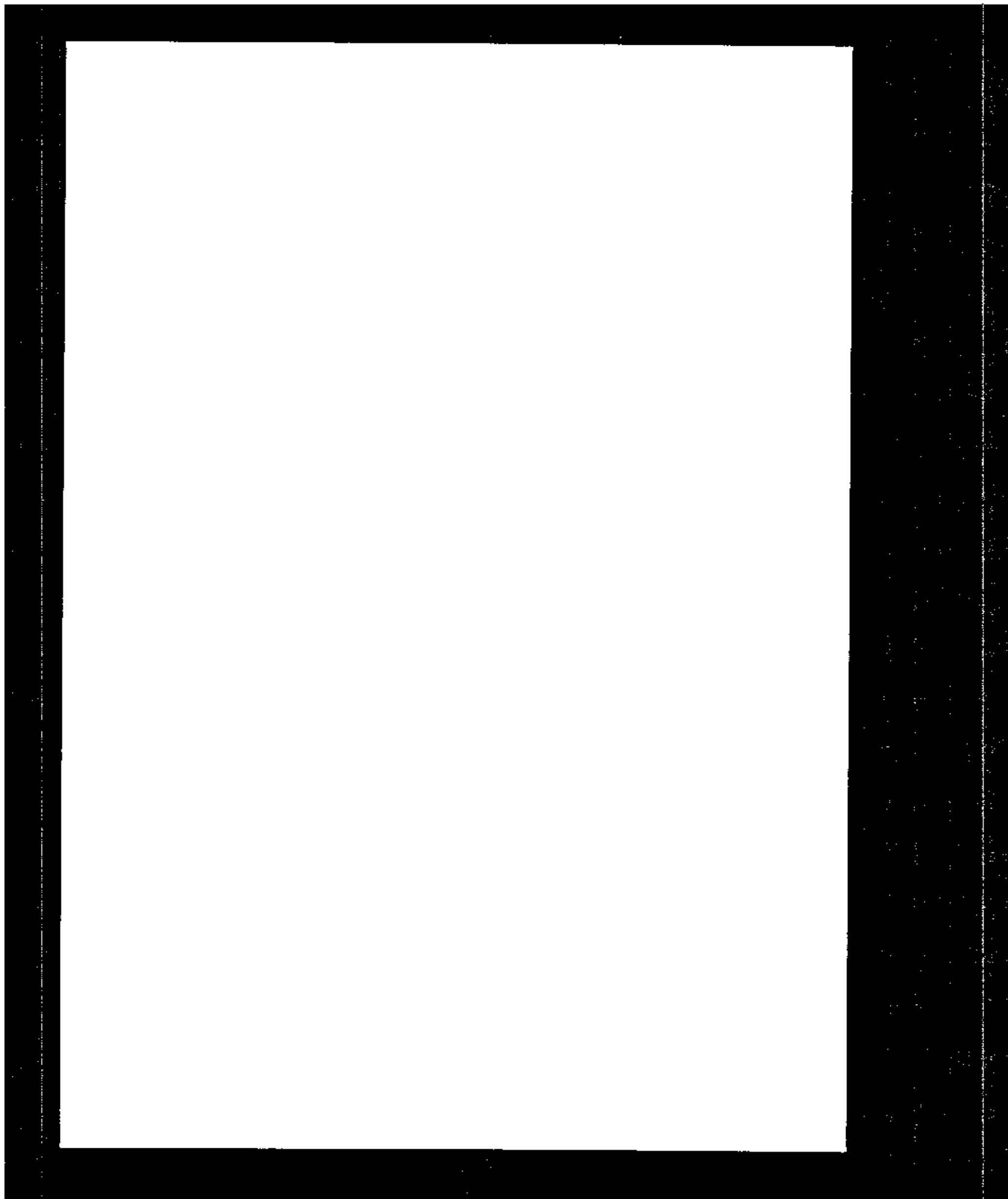




BILLBOARD FRAME

(NOT TO SCALE, ALL DIMENSIONS ARE IN MILLIMETERS)





SECTION VII

PROJECT DRAWINGS

SECTION VII

PROJECT DRAWINGS (SEE ISSUED APPROVED PLANS)

LIST OF DRAWINGS:

01 of 06	Development Plan, Location Map, General Notes, Design Parameters and List of Drawings
02 of 06	Plan Showing Existing Causeway
03 of 06	General Plan
04 of 06	Station 0+000, Station 0+015, Station 0+030, Station 0+045, Station 0+060 & Station 0+075
05 of 06	Section A, Detail of RC Curb, Typ. Reinforcement of Mooring Block & Detailed Section of Stairlanding
06 of 06	PCCP Layout Plan & Detail of 230mm PCC Pavement
Annex-1	Hydrographic Survey

SECTION VIII

BILL OF QUANTITIES
and
ATTACHMENTS

BILL OF QUANTITIES
IMPROVEMENT OF EXISTING ROCK CAUSEWAY
Port of San Roque, Daram, Samar

NO. (1)	DESCRIPTION OF WORK (2)	UNIT (3)	QTY. (4)	UNIT PRICE (Pesos) (5)	AMOUNT (Pesos) (4) x (5)
BILL NO. 1	GENERAL EXPENSES				
1.01	Mobilization, demobilization and cleaning	lot	1		
1.02	Rental of temporary site office and residence for the Engineer and staff	mo.	6		
1.03	Maintain temporary site office and residence for the Engineer and staff	mo.	6		
1.04	Provide Construction Safety and Health Program in the execution of the project	mo.	6		
TOTAL FOR BILL NO. 1					

BILL OF QUANTITIES
IMPROVEMENT OF EXISTING ROCK CAUSEWAY
Port of San Roque, Daram, Samar

NO. (1)	DESCRIPTION OF WORK (2)	UNIT (3)	QTY. (4)	UNIT PRICE (Pesos) (5)	AMOUNT (Pesos) (4) x (5)
BILL NO. 2	ROCK CAUSEWAY WITH STAIRLANDING				
2.01	Removal of existing electrical steel post	no.	2		
2.02	Removal and disposal of existing pavement	sq.m.	20		
2.03	Excavation of existing seabed along the containment of stairlandings	cu.m.	3		
2.04	Supply and place 2-layers of 500 kg. armour rocks	cu.m.	858		
2.05	Supply and place 50-100 kg. core rocks	cu.m.	848		
2.06	Supply and install geotextile fabric	sq.m.	208		
2.07	Supply, spread and compact selected fill	cu.m.	29		
2.08	Supply and place 3,500 psi. concrete for retaining walls, stairlanding, mooring block and RC curb	cu.m.	89		
2.09	Supply and install steel reinforcement for retaining walls, stairlanding, mooring block and RC curb	kg.	4,866		
2.10	Supply, spread and compact aggregate base course (CBR > 60)	cu.m.	26		
2.11	Construct portland cement concrete pavement (230mm thk.) including asphalt sealer and dowel bars for construction joint	sq.m.	185		
2.12	Supply and install mooring cleat including accessories	no.	8		
TOTAL FOR BILL NO. 2					

BASIS OF PAYMENT FOR WORK ITEMS INCLUDED IN THE PROPOSAL

The work items included in the proposal and the basis of payments are as follows:

BILL NO. 1

GENERAL EXPENSES

Item 1.01 Mobilization, demobilization and cleaning

The quantity to be paid for shall be the minimum equipment requirement enumerated in the bid documents mobilized, demobilized and cleaning of the site and accepted by the Engineer. The contract lump sum price shall be full compensation for furnishing all materials, labor, equipment, tools and incidentals necessary to mobilize and demobilize all the minimum equipment requirement enumerated in the bid documents including cleaning of the site. Fifty percent (50%) of the total amount shall be payable after the mobilization activity while the remaining (50%) payable after demobilization and cleaning.

Item 1.02 Rental of temporary site office and residence for the Engineer and staff

The quantity to be paid for shall be the actual rental for temporary site office and residence for the engineer and staff and accepted by the Engineer. The contract unit price shall be full compensation for furnishing all materials, labor, equipment, tools and incidentals necessary for the provision of temporary site office and residence for the engineer and staff at least 48.00 m²

Item 1.03 Maintain temporary site office and residence for the Engineer and staff

The quantity to be paid for shall be the actual services rendered in maintaining the site office and accepted by the Engineer. The contract unit price shall be full compensation for furnishing all materials, labor, equipment, tools and incidentals necessary to complete the maintenance of the temporary site office and residence as well as other expenses such as provision for electric power, telephone bill, potable water supply, janitorial and security services.

Item 1.04 Provide construction safety and Health Program in the execution of the project

The quantity to be paid for shall be the actual implementation of construction safety and health program and accepted by the Engineer. The contract unit price shall be full compensation for furnishing all materials, labor, equipment, tools and incidentals necessary to complete the implementation of the Construction Safety and Health Program, as required and approved by the Department of Labor and Employment (DOLE).

BILL NO. 2
ROCK CAUSEWAY WITH STAIRLANDING

Item 2.01 Removal of existing electrical steel post

The quantity to be paid for shall be the actual number of existing electrical steel post to be removed in accordance with the plans and specifications and accepted by the Engineer. The contract unit price shall be full compensation for furnishing all materials, labor, equipment, tools and incidentals necessary to complete the work.

Item 2.02 Removal and disposal of existing pavement

The quantity to be paid for shall be the actual area in square meter of existing pavement to be removed and disposed in accordance with the plans and specifications and accepted by the Engineer. The contract unit price shall be full compensation for furnishing all materials, labor, equipment, tools and incidentals necessary to complete the work.

Item 2.03 Excavation of existing seabed along the containment of stairlandings

The quantity to be paid for shall be the actual volume in cubic meter of seabed along the containment of stairlandings to be excavated in accordance with the plans and specifications and accepted by the Engineer. The contract unit price shall be full compensation for furnishing all materials, labor, equipment, tools and incidentals necessary to complete the work.

Item 2.04 Supply and place 2-layers of 500 kg. armour rocks

The quantity to be paid for shall be the actual volume in cubic meter of 2-layers of 500 kg. armour rocks to be supplied and set-in-place in accordance with the plans and specifications and accepted by the Engineer. The contract unit price shall be full compensation for furnishing all materials, labor, equipment, tools and incidentals necessary to complete the work.

Item 2.05 Supply and place 50-100 kg. core rocks

The quantity to be paid for shall be the actual volume in cubic meter of 50-100 kg. core rocks to be supplied and set-in-place in accordance with the plans and specifications and accepted by the Engineer. The contract unit price shall be full compensation for furnishing all materials, labor, equipment, tools and incidentals necessary to complete the work.

Item 2.06 Supply and install geotextile fabric

The quantity to be paid for shall be the actual area in square meter of geotextile fabric to be supplied and installed in accordance with the plans and specifications and accepted by the Engineer. The contract unit price shall be full compensation for furnishing all materials, labor, equipment, tools and incidentals necessary to complete the work.

Item 2.07 Supply, spread and compact selected fill

The quantity to be paid for shall be the actual volume in cubic meter of selected fill to be supplied, spread and compacted in accordance with the plans and specifications and accepted by the Engineer. The contract unit price shall be full compensation for furnishing all materials, labor, equipment, tools and incidentals necessary to complete the work.

Item 2.08 Supply and place 3,500 psi concrete for retaining walls, stairlanding, mooring block and RC curb

The quantity to be paid for shall be the actual volume in cubic meter of 3,500 psi. concrete for retaining walls, stairlanding, mooring block and RC curb to be supplied and set-in-place in accordance with the plans and specifications, accepted by the Engineer. The contract unit price shall be full compensation for furnishing all materials, labor, equipment, tools and incidentals necessary to complete the work.

Item 2.09 Supply and install steel reinforcement for retaining walls, stairlanding, mooring block and RC curb

The quantity to be paid for shall be the actual weight in kilograms of steel reinforcement for retaining walls, stairlanding, mooring block and RC curb to be supplied and installed in accordance with the plans and specifications, accepted by the Engineer. The contract unit price shall be full compensation for furnishing all materials, labor, equipment, tools and incidentals necessary to complete the work.

Item 2.10 Supply, spread and compact aggregate base course (CBR > 80)

The quantity to be paid for shall be the actual volume in cubic meter of aggregate base course to be supplied, spread and compacted in accordance with the plans and specifications and accepted by the Engineer. The contract unit price shall be full compensation for furnishing all materials, labor, equipment, tools and incidentals necessary to complete the work.

Item 2.11 Construct Portland Cement Concrete Pavement (230 mm thk) including asphalt sealer dowel bars for construction joint

The quantity to be paid for shall be the actual area in square meter of portland cement concrete pavement (230 mm thk) including asphalt sealer dowel bars for construction joint to be constructed in accordance with the plans and specifications and accepted by the Engineer. The contract unit price shall be full compensation for furnishing all materials, labor, equipment, tools and incidentals necessary to complete the work.

Item 2.12 Supply and install mooring cleat including accessories

The quantity to be paid for shall be the actual number of mooring cleat including accessories to be supplied and installed in accordance with the plans and specifications accepted by the Engineer. The contract unit price shall be full compensation for furnishing all materials, labor, equipment, tools and incidentals necessary to complete the work.

FACILITIES TO BE PROVIDED FOR THE ENGINEER & HIS STAFF

TEMPORARY FACILITIES OF THE CONTRACTOR

The Contractor shall provide and maintain such temporary offices, stores, workshops, latrines, housing and messing accommodations as are necessary. The location, dimension and layout of such buildings and places shall be subject to the approval in writing of the Engineer. By the end of the contract, the Contractor shall remove all buildings and the area shall be cleared and graded as required by the Engineer.

SITE OFFICE AND RESIDENCE FOR THE ENGINEER & STAFF

The Contractor shall provide (Rental) and maintain a temporary site office and residence with an area of at least 48 square meters for use of the Engineer and staff, including all the necessary electricity, water, communication services and consumables.

MINIMUM EQUIPMENT REQUIREMENTS

1	unit	Crawler Crane (30T, minimum), owned ✓
1	unit	Clamshell, owned ✓
1	unit	Concrete cutter, owned ✓
1	unit	Concrete Mixer (1 bagger, minimum), owned ✓
1	unit	Concrete Vibrator (3.5 hp, minimum), owned ✓
1	unit	Bar Cutter (electric, 25mm dia min.), owned ✓
1	unit	Bar Bender (electric, 25mm dia min.), owned ✓
1	unit	Dump Truck (8 cu.m., minimum), owned ✓
1	unit	Water Truck with pump (1,000 gal., minimum), owned ✓
1	unit	Jackhammer, owned ✓
1	unit	Air Compressor (250 cfm, minimum), owned ✓
1	unit	Oxy/Acetylene cutting outfit, owned ✓
1	unit	Road Roller (12.05T, vibratory, minimum), owned/ leased ✓
1	unit	Road Grader (125 hp, minimum), owned/ leased ✓
1	unit	Payloader (80 hp, minimum), owned/ leased ✓
1	unit	Backhoe (0.40 cu.m., 94.30hp, minimum), owned ✓
1	unit	Concrete Screeder, owned ✓
1	unit	Cargo Truck (5T, minimum) , owned ✓

CONSTRUCTION SAFETY AND HEALTH REQUIREMENTS

The Contractor shall implement the construction safety and health program in accordance with the applicable provisions of the Occupational Safety and Health Standards (OSHS) of the Department of Labor and Employment (DOLE).

The Contractor, subject to the approval of the Engineer shall provide and maintain throughout the duration of the contract a medical room with at least 15 square meters together with all necessary supplies to be sited in the Contractor's main area.

The Contractor shall provide the following minimum requirements:

LABOR

- | | | |
|---|-----|---------------------------|
| 1 | no. | Safety Engineer / Officer |
| 1 | no. | Nurse / Health Officer |

EQUIPMENT / MATERIALS

Personnel Protective Equipment

- | | | |
|----|-------|---------------------|
| 23 | pcs. | Hard Hats |
| 23 | pairs | Gloves (rubberized) |
| 6 | pcs. | Goggles (clear) |
| 23 | pairs | Safety Shoes |

Safety Devices

- | | | |
|---|-------|---------------------------|
| 1 | lot | Barricades |
| 1 | lot | Warning signs |
| 2 | units | Fire extinguisher (10kg.) |

Medical and First Aid System - For six (6) mos.

NOTE:

The Contractor shall provide the above-cited minimum construction safety and health requirements or as required by the Engineer.

SECTION IX
BIDDING FORMS

Bid Form

Date: _____

ITB No: _____

To: **Philippine Ports Authority**
Bonifacio Drive, South Harbor,
Port Area, Manila

We, the undersigned, declare that:

- (a) We have examined and have no reservation to the Bidding Documents, including Addenda, for the Contract Improvement of Existing Rock Causeway, Port of San Roque, Daram, Samar
- (b) We offer to execute the Works for this Contract in accordance with the Bid and Bid Data Sheet, General and Special Conditions of Contract accompanying this Bid;

The total price of our Bid, excluding any discounts offered below is:

BILL NO	DESCRIPTION	TOTAL AMOUNT
1	General Expenses	P
2	Rock Causeway with Stairlanding	P
	TOTAL AMOUNT OF BID (including VAT)	P

The discounts offered and the methodology for their application are: insert information;

- (c) Our Bid shall be valid for a period of 120 days from the date fixed for the Bid submission deadline in accordance with the Bidding Documents, and it shall remain binding upon us and may be accepted at any time before the expiration of that period;
- (d) If our Bid is accepted, we commit to obtain a Performance Security in the amount of insert percentage amount percent of the Contract Price for the due performance of the Contract;
- (e) Our firm, including any subcontractors or suppliers for any part of the Contract, have nationalities from the following eligible countries: insert information;
- (f) We are not participating, as Bidders, in more than one Bid in this bidding process, other than alternative offers in accordance with the Bidding Documents;
- (g) Our firm, its affiliates or subsidiaries, including any subcontractors or suppliers for any part of the Contract, has not been declared ineligible by the Funding Source;

- (h) We understand that this Bid, together with your written acceptance thereof included in your notification of award, shall constitute a binding contract between us, until a formal Contract is prepared and executed; and
- (i) We understand that you are not bound to accept the Lowest Calculated Bid or any other Bid that you may receive.
- (j) We likewise certify/confirm that the undersigned, is the duly authorized representative of the bidder, and granted full power and authority to do, execute and perform any and all acts necessary to participate, submit the bid, and to sign and execute the ensuing contract for the **Improvement of Existing Rock Causeway, Port of San Roque, Daram, Samar** of the **Philippine Ports Authority**.
- (k) We acknowledge that failure to sign each and every page of this Bid Form, including the Bill of Quantities, shall be a ground for the rejection of our bid.

Name: _____

In the capacity of: _____

Signed: _____

Duly authorized to sign the Bid for and on behalf of: _____

Date: _____

**STATEMENT OF ALL ON-GOING GOVERNMENT AND PRIVATE CONTRACTS,
INCLUDING CONTRACTS AWARDED BUT NOT YET STARTED, WHETHER SIMILAR OR NOT SIMILAR IN NATURE**

Name of the Contract or Title Of the Project 1]	Owner's Name and Address	Nature/ Scope of Work 2]	Contractor's Role (in percentage) 3]	Total Contract Value At			Date of Award 5]	Value of Outstanding Works	Estimated Time of Completion	% of Accomplishment		Contract Duration 5]	
				Award	Project Completion Date	Escalated Value to Present Prices 4]				Planned	Actual	Start	Completed
A) Government Contracts I. On-going II. Awarded but not yet started													
B) Private Contracts I. On-going II. Awarded but not yet started													

NOTE:

- 1] As appearing or defined in the contract entered/executed by the parties
- 2] With special reference to the Scope of Works as described/enumerated in the advertised Invitation to Bid.
- 3] Indicate whether as Sole Contractor, Sub-Contractor or Member in a Joint Venture / Consortium
- 4] Indicate the FOREX used if Contract Value is expressed in a currency other than the Philippine Peso. Specify the "Escalation Factor" used to escalate the Contract Value from completion date to the advertisement date of the Invitation to Bid per section 23.11.2 (3) of R.A. 8184.
- 5] State Month and Year.

This Statement shall be supported by:

- a) Notice of Award and/or Contract
- b) Notice to Proceed

Name of Firm/Applicant

Authorized Signing Official

Date

STATEMENT OF THE BIDDER'S SINGLE LARGEST COMPLETED CONTRACT (SLCC) SIMILAR TO THE CONTRACT TO BE BID

Name of the Contract or Title Of the Project	Owner's Name and Address	Nature/Scope of Work	Contractor's Role and Percentage Of Participation	Total Contract Value At			Date of Award	Value of Outstanding Works	Contract Duration	
				Award	Completion	Escalated Value to Present Prices			Start	Completed

NOTE:

1. The prospective bidder must have completed an SLCC that is similar to the contract to be bid, and whose value, adjusted to current prices using the PSA consumer price indices, must be at least fifty percent (50%) of the ABC to be bid.
2. This Statement shall be supported by:
 - a. Notice of Award and / or Notice to Proceed.
 - b. Project Owner's Certificate of Final acceptance issued by the owner other than the Contractor or Constructors Performance Evaluation System (CPES) Final Rating, which must be at least satisfactory.

Name of Firm/Applicant

Authorized Signing Official

Date

EXPERIENCE RECORD ON SIMILARLY COMPLETED PROJECTS

Similar Major Operations of Work 1]	Unit of Measure	Quantity					Unit of Measure	Quantity
			Title of the Project	Title of the Project	Title of the Project	Title of the Project		
1. Rockworks								
a.) 50-100 kg rocks	cu.m.	324						
b.) 500 kg rocks	cu.m.	429						
2. Fill Materials	cu.m.	15						
3. Reinforced Concreting Works	cu.m.	45						
4. Paving Works (PCCP) including base course	sq.m.	93						

NOTE: 1] *Submit the Certificate of Completion/Certificate of Acceptance by the project owner, Final Recapitulation/Bill of Quantities and/or Constructor Performance Evaluation System (CPES) ratings, 1st, 2nd & Final visit (if applicable). Projects with no Certificate of Completion/Acceptance and Recapitulation/Bill of Quantities shall not be considered.*

2] *The Owner's Certificate of Final Acceptance; or the Constructors Performance Evaluation Summary (CPES) Final Rating and/or the Certificate of Completion, must be satisfactory.*

Name of Firm/Applicant

Authorized Signing Official

Date

(Revised Form: September 2012)

FINANCIAL DATA

- A. The prospective bidder's audited Financial Statements, showing, among others, the prospective bidder's total and current assets and liabilities, stamped "RECEIVED" by the Bureau of Internal Revenue (BIR), or its duly accredited and authorized institutions, for the preceding calendar year which should not be earlier than two (2) years from the date of bid submission.

	Year
1. Total Assets	
2. Current Assets	
3. Total Liabilities	
4. Current Liabilities	
5. Net worth (1-3)	
6. Net Working Capital (2-4)	

- B. The computation of the bidders Net Financial Contracting Capacity (NFCC) must be at least equal to the ABC to be bid, as follows:

NFCC = [(Current assets minus current liabilities) (15)] minus the value of all outstanding or uncompleted portions of the projects under ongoing contracts, including awarded contracts yet to be started coinciding with the contract to be bid.

NFCC = _____

Attached herewith are certified true copies of the audited financial statements stamped received by the BIR or BIR authorized collecting agent for the latest/immediately preceding calendar year.

Name of Firm/Applicant

Authorized Signing Official

Date: _____

NOTES:

If Partnership or Joint Venture, each Partner or Member Firm of Joint venture shall submit separate financial statements.

LIST OF CONTRACTOR'S PERSONNEL

I hereby declare that the following key personnel enumerated below, with attached resume/bio-data, including valid PRC License, for the various positions / functions, are available for the project applied for:

Position of Key Personnel	Name	No. of Key Personnel	Similar Experience in the Position (Years) 1)	Total Experience in the Position (Years)	Attachment(s)	Annex(es)
Project Manager					PRC License (CE Preferred) Complete Qualification and Experience Data Certificate of Commitment	Annex " " "
Project Engineer					PRC License (CE Preferred) Complete Qualification and Experience Data Certificate of Commitment	Annex " " "
Materials Engineer					PRC License (CE Preferred) Submit Valid and Renewed DPWH Certificate of Accreditation Submit Accreditation Identification Card as Materials Engineer Complete Qualification and Experience Data Certificate of Commitment	Annex " " "
Construction Safety and Health Officer					Certificate of Safety and Health Construction Related Course Issued by DOLE Accredited Trainings Complete Qualification and Experience Data Certificate of Commitment	Annex " " "
Foreman					Complete Qualification and Experience Data Certificate of Commitment	Annex " " "
Other Position(s)					Complete Qualification and Experience Data Certificate of Commitment	Annex " " "

NOTE: 1. Minimum qualification requirements: (work experience is similar in nature and complexity to the project to be bid with regard to Registration Particulars of the Contractor's License)

Project Manager - Five (5) years

Materials Engineer – One (1) year

Project Engineer - Three (3) years

Materials Engineer I – for projects costing up to 100M

Foreman - Five (5) years

Materials Engineer II – for projects costing more than 100M

Name of Firm/Applicant

Authorized Signing Official

Date

REVISED FORM (September 2012)

LIST OF CONTRACTOR'S EQUIPMENT UNITS

I hereby declare that the following equipment listed below which are owned, leased or under purchase agreement are in good operating condition and are available for the duration of the project:

DESCRIPTION (Type, Model, Make)	No. of Unit(s)	Capacity Output 2]	Owned, Leased and/or under purchase agreement 1]	Submitted Proof of Ownership/Leased/ Purchase Agreement (Mark as Annex "A.....Z")	OTHER INFORMATION(S) (As Applicable)				
					Manufacturer	Engine Serial No.	Chassis No./ Name of Vessel	Location	Status

1] Indicate if owned or leased as listed in the Checklist/Bidding Documents. For owned equipment, as required, submit proof of ownership (i.e. deed of sale, sales invoice, official receipt). For Water Truck, Dump Truck and Transit Mixer submit LTO Certificate of Registration and valid Official Receipt. For owned barge/tugboat, submit Marina Certificate of Ownership and valid Cargo Ship Safety Certificate. For newly purchased barge/tugboat, submit Deed of Sale together with an application for Marina Certificate of Ownership duly received/authenticated by Marina with corresponding valid Cargo Ship Safety Certificate. For leased equipment, submit duly notarized copy of lease contract together with a copy of the Marina Owner's (Lessor's) Certificate and valid Cargo Ship Safety Certificate.

2] The unit of each equipment shall be as indicated in the Checklist/Bidding Documents, i.e. GW (for crane barge), DWT (for deck barge and hopper barge), TON (for crane, road roller and drop hammer), kg. -m/blow (for diesel hammer), cu.m (for dump truck), hp. (for tugboat, road grader, bulldozer and concrete vibrator), cfm (for compressor), gal. (for water truck with pump), amp. (for welding machine), bagger (for concrete mixer).

Name of Firm/Applicant

Authorized Signing Official

Date

REVISED FORM (January 2011)

OMNIBUS SWORN STATEMENT FOR SOLE PROPRIETORSHIP

REPUBLIC OF THE PHILIPPINES)
CITY OF _____) SS

AFFIDAVIT

I (Name), of legal age, (Civil Status), (Nationality), and residing at (Address), after having been duly sworn in accordance with law, do hereby depose and state that:

1. I am the sole proprietor or authorized representative of (Name of Bidder) with office address at _____;
2. As the owner and sole proprietor or authorized representative of (Name of Bidder), I have full power and authority to do, execute and perform any and all acts necessary to participate, submit the bid, and to sign and execute the ensuing contract for (Name of Project) of the Philippine Ports Authority, (as shown in the attached duly notarized "Special Power of Attorney" for the authorized representative);
3. (Name of Bidder) is not "blacklisted" or barred from bidding by the Government of the Philippines or any of its agencies, offices, corporations, or Local Government Units, foreign government / foreign or international financing institution whose blacklisting rules have been recognized by the Government Procurement Policy Board;
4. Each of the documents submitted in satisfaction of the bidding requirements is an authentic copy of the original, complete, and all statements and information provided therein are true and correct;
5. (Name of Bidder) is authorizing the Head of the Procuring Entity or its duly authorized representative(s) to verify all the documents submitted;
6. The owner or sole proprietor is not related to the Head of Procuring Entity, members of the Bids and Awards Committee (BAC), the Technical Working Group, and the BAC Secretariat, the head of the Project Management office or the end - user unit, and the project consultants by consanguinity or affinity up to the third civil degree;
7. (Name of Bidder) complies with existing labor laws and standards; and
8. (Name of Bidder) is aware of and has undertaken the following responsibilities as a Bidder:
 - a) Carefully examine all of the Bidding Document;
 - b) Acknowledge all conditions, local or otherwise, affecting the implementation of the contract;
 - c) Made an estimate of the facilities available and needed for the contract to be bid, if any; and
 - d) Inquire or secure Supplemental / Bid Bulletin(s) issued for the *Improvement of Existing Rock Causeway, Port of San Roque, Daram, Samar*

9. (Name of Bidder) did not give or pay directly or indirectly, any commission, amount, fee, or any form of consideration, pecuniary or otherwise, to any person or official, personnel or representative of the government in relation to any procurement project or activity.

IN WITNESS WHEREOF, I have hereunto set my hand this ____ day of ____ 20__ at _____, Philippines.

Bidder's Representative / Authorized Signatory

SUBSCRIBED AND SWORN to before me this ____ day of [month] [year] at [place of execution], Philippines. Affiant/s is/are personally known to me and was/were identified by me through competent evidence of identity as defined in the 2004 Rules on Notarial Practice (A.M. No. 02-8-13-SC). Affiant/s exhibited to me his/her [insert type of government identification card used], with his/her photograph and signature appearing thereon, with no. _____ and his/her Community Tax Certificate No. _____ issued on ____ at _____.

Witness my hand and seal this ____ day of [month] [year].

NAME OF NOTARY PUBLIC

Serial No. of Commission _____

Notary Public for _____ until _____

Roll of Attorneys No. _____

PTR No. _____ [date issued], [place issued]

IBP No. _____ [date issued], [place issued]

Doc. No. _____
Page No. _____
Book No. _____
Series of _____

OMNIBUS SWORN STATEMENT FOR PARTNERSHIP OR COOPERATIVE

REPUBLIC OF THE PHILIPPINES)
CITY OF _____) SS

AFFIDAVIT

I (Name), of legal age, (Civil Status), (Nationality), and residing at (Address), after having been duly sworn in accordance with law, do hereby depose and state that:

1. I am the duly authorized and designated representative of (Name of Bidder) with office address at (Address);
2. I am granted full power and authority to do, execute and perform any and all acts necessary to participate, submit the bid, and to sign and execute the ensuing contract for (Name of Project) of the Philippine Ports Authority, accompanied by the duly notarized Special Power of Attorney, Board/Partnership Resolution or Secretary's Certificate (whichever is applicable);
3. (Name of Bidder) is not "blacklisted" or barred from bidding by the Government of the Philippines or any of its agencies, offices, corporations, or Local Government Units, foreign government / foreign or international financing institution whose blacklisting rules have been recognized by the Government Procurement Policy Board;
4. Each of the documents submitted in satisfaction of the bidding requirements is an authentic copy of the original, complete, and all statements and information provided therein are true and correct;
5. (Name of Bidder) is authorizing the PPA General Manager or its duly authorized representative(s) to verify all the documents submitted;
6. None of the officers and members of (Name of Bidder) is related to the PPA General Manager, members of the Bids and Awards Committee (BAC), the Technical Working Group, and the BAC Secretariat, the head of the Project Management office or the end- user unit, and the project consultants by consanguinity or affinity up to the third civil degree;
7. (Name of Bidder) complies with existing labor laws and standards; and
8. (Name of Bidder) is aware of and has undertaken the following responsibilities as a Bidder:
 - a) Carefully examine all of the Bidding Document;
 - b) Acknowledge all conditions, local or otherwise, affecting the implementation of the contract;
 - c) Made an estimate of the facilities available and needed for the contract to be bid, if any; and
 - d) Inquire or secure Supplemental / Bid Bulletin(s) issued for the *Improvement of Existing Rock Causeway, Port of San Roque, Daram, Samar*

9. (Name of Bidder) did not give or pay directly or indirectly, any commission, amount, fee, or any form of consideration, pecuniary or otherwise, to any person or official, personnel or representative of the government in relation to any procurement project or activity.

IN WITNESS WHEREOF, I have hereunto set my hand this ____ day of ____ 20__ at _____, Philippines.

Bidder's Representative / Authorized Signatory

SUBSCRIBED AND SWORN to before me this ____ day of [month] [year] at [place of execution], Philippines. Affiant/s is/are personally known to me and was/were identified by me through competent evidence of identity as defined in the 2004 Rules on Notarial Practice (A.M. No. 02-8-13-SC). Affiant/s exhibited to me his/her [insert type of government identification card used], with his/her photograph and signature appearing thereon, with no. _____ and his/her Community Tax Certificate No. _____ issued on ____ at _____.

Witness my hand and seal this ____ day of [month] [year].

NAME OF NOTARY PUBLIC

Serial No. of Commission _____
Notary Public for _____ until _____
Roll of Attorneys No. _____
PTR No. _____ [date issued], [place issued]
IBP No. _____ [date issued], [place issued]

Doc. No. _____
Page No. _____
Book No. _____
Series of _____

OMNIBUS SWORN STATEMENT FOR CORPORATION OR JOINT VENTURE

REPUBLIC OF THE PHILIPPINES)
CITY OF _____)SS

AFFIDAVIT

I (Name), of legal age, (Civil Status), (Nationality), and residing at (Address), after having been duly sworn in accordance with law, do hereby depose and state that:

1. I am the duly authorized and designated representative of (Name of Bidder) with office address at _____;
2. I am granted full power and authority to do, execute and perform any and all acts necessary to participate, submit the bid, and to sign and execute the ensuing contract for (Name of Project) of the Philippine Ports Authority, accompanied by the duly notarized Special Power of Attorney, Board Resolution or Secretary's Certificate;
3. (Name of Bidder) is not "blacklisted" or barred from bidding by the Government of the Philippines or any of its agencies, offices, corporations, or Local Government Units, foreign government / foreign or international financing institution whose blacklisting rules have been recognized by the Government Procurement Policy Board;
4. Each of the documents submitted in satisfaction of the bidding requirements is an authentic copy of the original, complete, and all statements and information provided therein are true and correct;
5. (Name of Bidder) is authorizing the PPA General Manager or its duly authorized representative(s) to verify all the documents submitted;
6. None of the officers, directors, and controlling stockholders of (Name of Bidder) is related to the PPA General Manager, members of the Bids and Awards Committee (BAC), the Technical Working Group, and the BAC Secretariat, the head of the Project Management office or the or end- user unit, and the project consultants by consanguinity or affinity up to the third civil degree;
7. (Name of Bidder) complies with existing labor laws and standards; and
8. (Name of Bidder) is aware of and has undertaken the following responsibilities as a Bidder:
 - a) Carefully examine all of the Bidding Document;
 - b) Acknowledge all conditions, local or otherwise, affecting the implementation of the contract;
 - c) Made an estimate of the facilities available and needed for the contract to be bid, if any; and
 - d) Inquire or secure Supplemental / Bid Bulletin(s) issued for the *Improvement of Existing Rock Causeway, Port of San Roque, Daram, Samar*

9. (Name of Bidder) did not give or pay directly or indirectly, any commission, amount, fee, or any form of consideration, pecuniary or otherwise, to any person or official, personnel or representative of the government in relation to any procurement project or activity.

IN WITNESS WHEREOF, I have hereunto set my hand this ____ day of ____ 20__ at _____, Philippines.

Bidder's Representative / Authorized Signatory

SUBSCRIBED AND SWORN to before me this ____ day of [month] [year] at [place of execution], Philippines. Affiant/s is/are personally known to me and was/were identified by me through competent evidence of identity as defined in the 2004 Rules on Notarial Practice (A.M. No. 02-8-13-SC). Affiant/s exhibited to me his/her [insert type of government identification card used], with his/her photograph and signature appearing thereon, with no. _____ and his/her Community Tax Certificate No. _____ issued on ____ at _____.

Witness my hand and seal this ____ day of [month] [year].

NAME OF NOTARY PUBLIC

Serial No. of Commission _____

Notary Public for _____ until _____

Roll of Attorneys No. _____

PTR No. _____ [date issued], [place issued]

IBP No. _____ [date issued], [place issued]

Doc. No. _____

Page No. _____

Book No. _____

Series of _____

REPUBLIC OF THE PHILIPPINES)
CITY OF _____) S.S.

BID-SECURING DECLARATION
Invitation to Bid No. _____

To: Philippine Ports Authority
Bonifacio Drive, South Harbor,
Port Area, Manila

I, the undersigned, declare that:

1. I understand that, according to your conditions, bids must be supported by a Bid Security, which may be in the form of a Bid-Securing Declaration.
2. I/We accept that: (a) I/we will be automatically disqualified from bidding for any contract with any procuring entity for a period of two (2) years upon receipt of your Blacklisting Order; and, (b) I/we will pay the applicable fine provided under Section 6 of the Guidelines on the Use of Bid Securing Declaration, within fifteen (15) days from receipt of the written demand by procuring entity for the commission of acts resulting to the enforcement of the bid securing declaration under Sections 23.1 (b), 34.2, 40.1 and 69.1, except 69.1(f), of the IRR of RA 9184; without prejudice to other legal action the government may undertake:
3. I understand that this Bid-Securing Declaration shall cease to be valid on the following circumstances:
 - (a) Upon expiration of the bid validity period, or any extension thereof pursuant to your request;
 - (b) I am declared ineligible or post-disqualified upon receipt of your notice to such effect, and (i) I failed to timely file a request for reconsideration or (ii) I filed a waiver to avail of said right;
 - (c) I am declared as the bidder with the Lowest Calculated Responsive Bid, and I have furnished the performance security and signed the Contract.

IN WITNESS WHEREOF, I have hereunto set my hand this _____ day of _____ 20____ at _____, Philippines.

Name of Bidder's Authorized Representative
(Signatory's Legal Capacity)
AFFIANT

SUBSCRIBED AND SWORN to before me this ____ day of [month] [year] at [place of execution], Philippines. Affiant/s is/are personally known to me and was/were identified by me through competent evidence of identity as defined in the 2004 Rules on Notarial Practice (A.M. No. 02-8-13-SC). Affiant/s exhibited to me his/her [insert type of government identification card used], with his/her photograph and signature appearing thereon, with no. _____.

Witness my hand and seal this ____ day of [month] [year].

NAME OF NOTARY PUBLIC

Serial No. of Commission _____
Notary Public for _____ until _____
Roll of Attorneys No. _____
PTR No. ___, [date issued], [place issued]
IBP No. ___, [date issued], [place issued]
Doc. No. _____
Page No. _____
Book No. _____
Series of _____.

CONSTRUCTION METHODOLOGY

Name of Project : _____
Proposed Project Description : _____
Location : _____

MINIMUM SCOPE OF CONSTRUCTION METHODOLOGY

EXCAVATION, EXTENSION OF BREAKWATER & CONSTRUCTION OF BOAT MOORING FACILITIES

A. ROCK CAUSEWAY WITH STAIRLANDING

1. Removal of existing electrical steel post (2 sets)
2. Removal and disposal of existing pavement (20 sq. m.)
3. Excavation of existing seabed along the containment of stairlandings (3 cu. m.)
4. Supply and place 500 kg./pc. armour rocks (858 cu. m.)
5. Supply and place 50-100 kg./pc. core rocks (648 cu. m.)
6. Supply and install geotextile fabric (208 sq. m.)
7. Supply, spread and compact selected fill (29 cu. m.)
8. Supply and place 3,500 psi concrete for retaining wall, stairlanding, mooring block and RC curb (89 cu. m.)
9. Supply and install steel reinforcement for retaining wall, stairlanding, mooring block and RC curb (4,866 kg.)
10. Supply, spread and compact gravel base course (26 cu. m.)
11. Construct portland cement concrete pavement (230 mm thk.) including asphalt sealer and dowel bars for construction joint (185 sq. m.)
12. Supply and install cleat including accessories (6 no.)

NOTES:

The narrative construction method will guide and familiarize the contractor and the PPA on how the project shall be carried out in accordance with the highest standard of workmanship.

The construction method shall be consistent with the Bar Chart / S-Curve Schedule, Equipment Schedule and Manpower Schedule.

Signature
(Authorized Signing Official)

MANPOWER SCHEDULE

Name of Project : _____

Proposed Project Description : _____

Location : _____

MANPOWER (Minimum)	CONTRACT DURATION (_____ Calendar Days)					
	M O N T H L Y					
	1	2	3	4	5	6
Project Manager						
Project Engineer						
Materials Engineer						
Construction Safety and Health Officer						
Foreman						
- Carpenter						
- Steel man						
- Mason						
- Electrician						
- Rigger						
- Others						

Signature
(Authorized Signing Official)

CASHFLOW BY QUARTER AND PAYMENT SCHEDULE

Name of Project: : _____

Proposed Project Description : _____

Location : _____

Project Duration (days or months)	Payment Schedule (Monthly, in Pesos)	Cash flow (Quarterly, in Pesos)
TOTAL		

NOTES

- The cash flow by quarter and payment schedule should be consistent with the Bar Chart and S-curb.
- Payment schedule shall not be more than once a month.

Signature
(Authorized Signing Official)

SECTION X
CONTRACT FORM

Republic of the Philippines
PHILIPPINE PORTS AUTHORITY
PPA Building, Bonifacio Drive, South Harbor,
Port Area, Manila, Philippines

C O N T R A C T
FOR THE IMPROVEMENT OF EXISTING ROCK CAUSEWAY
PORT OF SAN ROQUE, DARAM, SAMAR

KNOW ALL MEN BY THESE PRESENTS:

This Contract, made and entered into this _____ day of _____, 20____, in Manila, Philippines, by and between:

PHILIPPINE PORTS AUTHORITY, a government instrumentality created under Presidential Decree No. 857, as amended, with principal office at PPA Building, Bonifacio Drive, South Harbor, Port Area, Manila, represented herein by its duly authorized General Manager, **JAY DANIEL R. SANTIAGO**, and hereinafter referred to as "PPA";

- and -

_____, a corporation duly organized and existing in accordance with Philippine laws, with office and business address _____, represented in this act by _____, duly authorized for this purpose, as evidenced by Secretary's Certificate _____, a copy of which is hereto attached and made an integral part hereof as Annex "A", and hereinafter referred to as "CONTRACTOR"

W I T N E S S E T H:

WHEREAS, in accordance with Republic Act No. 9184 and its Implementing Rules and Regulations, PPA advertised and published in a newspaper of general circulation and posted on the PPA website and G-EPS as well as in its bulletin board, an Invitation to Bid for the *Improvement of Existing Rock Causeway, Port of San Roque, Daram, Samar*.

WHEREAS, the CONTRACTOR and other prospective bidders submitted their respective bids for the foregoing project;

WHEREAS, after the opening of bids on _____, and the conduct of bid evaluation and required post-qualification, the bid submitted by the CONTRACTOR at its unit and lump sum prices set forth in its proposal was found to be the Lowest Calculated Responsive Bid in the amount of _____ (P _____), Philippine Currency;

WHEREAS, pursuant to Head Office BAC Resolution No. _____ Series of _____, award of the contract was made to the CONTRACTOR in a Notice of Award dated _____, in the amount of _____ (P _____), after submission of the required documents within the prescribed period and compliance to the conditions stipulated in the IRR;

WHEREAS, the CONTRACTOR duly accepted the award by signing its Conforme on the said Notice of Award;

NOW, THEREFORE, for and in consideration of the foregoing premises and the mutual

covenants, stipulations and agreements herein contained, the PPA and the CONTRACTOR have agreed, as they do hereby agree, and contract as follows:

ARTICLE I

CONTRACT DOCUMENTS

1.01 The following documents shall constitute integral parts of this Contract, as fully as if the contents of the said documents are reproduced, incorporated and set forth herein, and shall govern and control in full force and effect the rights and obligations of the Parties, except as otherwise modified by the terms and conditions of this Contract, or by mutual agreement in writing of both parties, to wit

- a. Contract Agreement
- b. Bidding Documents
- c. Winning bidder's bid, including the Eligibility requirements, Technical and Financial Proposals and all other documents / statements submitted
- d. Performance Security
- e. Notice of Award of Contract; and
- f. Other contract documents that may be required by existing laws and the PPA such as:
 - (1) Construction Schedule and S-Curve
 - (2) Manpower Schedule
 - (3) Construction Methods
 - (4) Equipment Utilization Schedule
 - (5) Construction Safety and Health Program approved by the DOLE
 - (6) Pert / CPM
 - (7) Duty Approved Program of Work and Cost Estimates
 - (8) Certificate of Availability of Funds
 - (9) Abstract of Bids
 - (10) Resolution of Award

1.02 All Contract documents are and shall remain as the property of the PPA.

1.03 The words and expressions in this Contract shall have the same meanings respectively assigned to them in the Contract Documents referred to above.

ARTICLE II

CONTRACTOR'S UNDERTAKING SCOPE OF WORK

2.01 The CONTRACTOR, in consideration of the payment to be made by the PPA to the CONTRACTOR, as stated in the Contract Documents and this Contract, the latter hereby covenants to execute and complete the *Improvement of Existing Rock Causeway, Port of San Roque, Daram, Samar* in conformity in all respects with the provisions of this Contract, as follows:

ITEMS	TOTAL AMOUNT
1. General Expenses	P
2. Rock Causeway with Stairlanding	P
TOTAL AMOUNT	P

2.02 The CONTRACTOR agrees to commence, perform and complete the work called for and defined in this Contract at its sole cost and expense, and to fully and faithfully furnish all materials, tools, labor supplies, equipment, services and superintendence for the implementation of this Contract in accordance with the schedule in the Contract Documents forming integral parts of this Contract.

2.03 The CONTRACTOR guarantees, among others, that all tools, equipment, machineries, instruments, accessories and materials it will supply or deliver or install and/or use in the construction and workmanship of all his work under the Contract, shall be brand new and in accordance with the Contract Documents.

2.04 The CONTRACTOR recognizes the position of trust and confidence reposed in it under this Contract, and agrees to perform its obligations hereunder in the most efficient and competent manner, use its skill and good judgment, always set in good faith, and carry out the execution of this Contract in the most sound, expeditious and economical manner consistent with the interest of the PPA.

ARTICLE III

CONSIDERATION

3.01 For and in consideration of the full, satisfactory and faithful performance by the CONTRACTOR of all its undertakings defined in and provided for under this Contract and Contract Documents, the PPA agrees to pay the CONTRACTOR the total amount not exceeding _____ (P

), Philippine Currency, inclusive of the 12% value added tax, payment to be made and computed on the basis of final quantities at the unit bid price for each item of work actually performed and finished for each pay item as determined and accepted by PPA and in the manner set forth in the Contract Documents, as full compensation for everything furnished and done by the CONTRACTOR under this Contract, including all works required but not specifically mentioned, and also for all losses and damages to the CONTRACTOR arising out of the work aforesaid, from the action of the elements, or from any obstruction or difficulty encountered in the prosecution of this Contract, for all expenses incurred by or in consequence of the suspension or discontinuance of the contract herein specified and for faithfully completing the contract and the whole thereof, at the time and in the manner provided in the Contract Documents.

It is agreed and understood that all bid prices specified in this contract shall be considered as fixed prices, and therefore not subject to price adjustment and escalation during the contract implementation, except under extraordinary circumstances and upon prior approval of the Government Procurement Policy Board (GPPB) or when a Treaty or International or Executive Agreement Expressly allows it. Any request for price escalation under extraordinary circumstances shall be submitted by PPA to the National Economic and Development Authority (NEDA). Extraordinary circumstances shall refer to events that may be determined by the NEDA in accordance with the Civil Code of the Philippines and upon recommendation of the PPA.

3.02 Final and full payment of the consideration herein above-mentioned shall be upon full completion of the project and fulfillment by the CONTRACTOR of all the terms and conditions set forth in this Contract.

However, it is agreed that no payment or payments made under this Contract, except the final payment upon issuance of Certificate of Completion and Acceptance, shall be understood as performance of this Contract, either wholly or in part, and no payment shall be construed to be an acceptance of defective work or improper implementation thereof.

3.03 Any payment due and payable to the CONTRACTOR may be set off against liquidated damages payable to the PPA by the CONTRACTOR under this Contract.

3.04 It is likewise understood that the CONTRACTOR shall show proof evidencing payments by the CONTRACTOR of labor, materials, supplies, insurance premiums, etc., used in the work, before any payment is made to it.

For this purpose, the CONTRACTOR shall, before payment is made on the works accomplished, submit an affidavit certifying to the fact of payments of said labor, materials, supplies, equipment, insurance premiums, etc.

3.05 All payments shall be subject to existing government accounting and auditing rules and regulations.

3.06 Progress payments are subject to retention of ten percent (10%) referred to as the "retention money". Such retention shall be based on the total amount due to the contractor prior to any deduction and shall be retained from every progress payment until fifty percent (50%) of the value of works, as determined by the PPA are completed. If, after fifty percent (50%) completion, the work is satisfactorily done and on schedule, no additional retention shall be made; otherwise, the ten percent (10%) retention shall be imposed.

3.07 The total "retention money" shall be due for release upon final acceptance of the works. The CONTRACTOR may, however, request for the substitution of the retention money for each progress billing with irrevocable standby letters of credit from a Universal or Commercial Bank, of amounts equivalent to the retention money substituted for and acceptable to PPA, provided that the project is on schedule and is satisfactorily undertaken. Otherwise, the ten percent (10%) retention shall be made. Said irrevocable standby letters of credit to be posted in favor of PPA shall be valid for a duration to be determined by PPA and will answer for the purpose for which the ten percent (10%) retention is intended, i.e., to cover uncorrected discovered defects and third party liabilities.

ARTICLE IV

PERFORMANCE SECURITY

4.01 To guarantee the faithful performance of the CONTRACTOR of its obligations under this Contract, it shall post prior to the signing of the Contract a performance security in the form of Irrevocable letter of credit issued by a Universal or Commercial Bank, and acceptable to PPA or a combination thereof as may be required by PPA, in accordance with the following schedule:

- | | | |
|----|--|--|
| a. | Irrevocable,
letter of credit issued by a Universal or
Commercial Bank | - Ten Percent (10%) of the total
contract price |
| b. | any combination of the foregoing | - Proportionate to share of form with
respect to total amount of security |

4.02 This performance security shall be denominated in Philippine Pesos and posted in favor of PPA, and shall be forfeited in favor of PPA in the event it is established that the CONTRACTOR is in default in any of its obligations under this Contract.

4.03 Subject to the conditions of the Contract, the performance security may be released by PPA after the issuance of the Certificate of Acceptance of the project, provided that PPA has no claims filed against the CONTRACTOR or the surety company and there are no claims for labor and materials filed against the contractor.

4.04 The CONTRACTOR shall post an additional performance security following the schedule above to cover any cumulative increase of more than ten percent (10%) over the original value of the contract as a result of amendments to order or change orders, extra work orders and supplemental agreements as the case may be. The CONTRACTOR shall cause the extension of the validity of the performance security to cover approved contract time extensions.

4.05 In case of a reduction in the contract value or for partially completed works under this contract which are usable and accepted by PPA, and the use of which in the judgment of PPA shall not affect the structural integrity of the entire project, PPA may allow a proportional reduction in the original performance security, provided that any such reduction is more than ten percent (10%) and that the aggregate of such reductions is not more than fifty percent (50%) of the original performance security.

ARTICLE V

COMPLETION TIME: LIQUIDATED DAMAGES

5.01 The CONTRACTOR agrees and obligates itself to perform and complete all works provided for in this Contract within _____ calendar days (including Sundays and Holidays), reckoned not later than seven (7) calendar days from issuance of the Notice to Proceed. Notice to Proceed shall be issued after this Contract has been signed by the Parties hereof.

5.02 Time is of the essence of this Contract. Should the CONTRACTOR refuse or fail to satisfactorily complete the work within the specified contract time, plus any time extension duly granted and is hereby in default under the contract, the CONTRACTOR shall pay the PPA for liquidated damages, and not by way of penalty, an amount as provided in the conditions of contract, equal to at least one-tenth (1/10) of one (1) percent of the cost of the unperformed portion of the works for everyday of delay.

5.03 The project or a portion thereof may be deemed usable when it starts to provide the desired benefits as certified by the Facilities Construction and Maintenance Department of PPA.

5.04 It is understood that the damages herein provided are fixed and agreed liquidated damages and to be entitled to such damages, PPA does not have to prove that it has incurred actual damages. Such amount shall be deducted from any money due or which may become due the CONTRACTOR under the contract and/or collect such liquidated damages from the retention money or other securities posted by the CONTRACTOR, whichever is convenient to PPA.

5.05 In case that the delay in the completion of the work exceed a time duration equivalent to ten percent (10%) of the specified contract time plus any time extension duly granted to the CONTRACTOR, PPA may rescind the contract, forfeit the CONTRACTOR's performance security and take over the prosecution of the project or award the same to a qualified contractor through negotiated contract.

5.06 In no case, however, shall the total sum of liquidated damages exceed ten percent (10%) of the total contract price, in which event the contract shall automatically be taken over by PPA or award the same to a qualified contractor through negotiation and the erring CONTRACTOR's performance security shall be forfeited. The amount of the forfeited performance security shall be aside from the amount of the liquidated damages that the CONTRACTOR shall pay PPA under Section 5.02 hereof and impose other appropriate sanctions.

ARTICLE VI

EXTENSION OF CONTRACT TIME

6.01 Should the amount of additional work of any kind or other special circumstances of any kind whatsoever occur such as to fairly entitle the CONTRACTOR to an extension of contract time, PPA shall determine the amount of such extension; provided that PPA is not bound to take into account any claim for an extension of time unless the contractor has prior to the expiration of the contract time and within thirty (30) calendar days after such work has been commenced or after the circumstances leading to such claim have arisen, delivered to PPA notices in order that it could have investigated them at that time. Failure to provide such notice shall constitute a waiver by the CONTRACTOR of any claim. Upon receipt of full and detailed particulars, PPA shall examine the facts and extent of the delay and

shall extend the contract time for completing the contract work when, in PPA's opinion, the findings of facts justify an extension.

6.02 No extension of contract time shall be granted the CONTRACTOR due to (a) ordinary unfavorable weather conditions; and (b) inexcusable failure or negligence of CONTRACTOR to provide the required equipment, supplies or materials.

6.03 Extension of contract time may be granted only when the affected activities fall within the critical path of the PERT/CPM network.

6.04 No extension of contract time shall be granted when the reason given to support the request for extension was already considered in the determination of the original contract time during the conduct of detailed engineering and in the preparation of the contract documents as agreed upon by the parties before contract perfection.

6.05 Extension of contract time shall be granted for rainy/unworkable days considered unfavorable for the prosecution of the works at the site, based on the actual conditions obtained at the site, in excess of the number of rainy/unworkable days predetermined by the PPA in relation to the original contract time during the conduct of detailed engineering and in the preparation of the contract documents as agreed upon by the parties before contract perfection and/or for the equivalent period of delay due to major calamities such as exceptionally destructive typhoons, floods and earthquakes, and epidemics, and for causes such as non-delivery on time of materials, working drawings, or written information to be furnished by the PPA, non-acquisition of permit to enter private properties within the right-of-way resulting in complete paralización of construction activities, and other meritorious causes as determined by the PPA's authorized Engineer and approved by the PPA. Shortage of construction materials, general labor strikes, and peace and order problems that disrupt construction operations through no fault of the CONTRACTOR may be considered as additional grounds for extension of contract time provided they are publicly felt and certified by appropriate government agencies such as DTI, DOLE, DILG and DND, among others. The written consent of bondsmen must be attached to any request of the CONTRACTOR for extension of contract time and submitted to the PPA for consideration and that the validity of the performance security shall be correspondingly extended.

ARTICLE VII

ENTIRE CONTRACT

7.01 Provisions to the contrary notwithstanding, it is agreed that this is an entire contract for one whole complete work and that partial payments on account by the PPA or the use of parts of the work or equivalent shall not constitute an acceptance of any part of the work before its entire completion and final acceptance in writing by the PPA.

ARTICLE VIII

CONTRACTOR'S LIABILITY

8.01 The Parties, likewise, hereby agree that the employees of the CONTRACTOR are not employees of the PPA; hence, the PPA shall not in any way be liable or responsible for any personal injury or damages including death sustained or caused by any of the employees of the CONTRACTOR and/or his sub-contractor or agent or supplier whether or not occurring during the performance of their duties. The CONTRACTOR agrees and binds itself to indemnify the PPA for whatever injuries or damages caused or occasioned or contributed to by the failure, negligence or conduct of the CONTRACTOR and/or its employees, sub-contractors, agent and supplier or consultants arising out of or in connection with or on the occasion of the performance of this Contract. The CONTRACTOR shall, at all times, stand solely liable and/or responsible for the enforcement of, and compliance with all existing laws, rules and regulations and binds itself to save and hold the PPA free and harmless from

any and all liability in respect thereof and/or arising therefrom and/or by reason of this Contract and its implementation.

ARTICLE IX

RESPONSIBILITY OF THE CONTRACTOR

9.01 The CONTRACTOR shall assume full responsibility for the entire contract work until its final acceptance by the PPA and shall be held responsible for any damage or destruction of works until such final acceptance.

9.02 The CONTRACTOR shall be fully responsible for the safety, protection, security and convenience of its personnel, third parties and the public at large, as well as the works, equipment, installation and the like to be affected by the construction work.

9.03 Any actionable act or acts of _____ arising out of or in the course of this Contract shall be understood and binding as an act of _____ and vice-versa.

ARTICLE X

INSPECTION AND CONSTRUCTION OF CONTRACT WORK

10.01 Inspection of the contract work shall be made by the PPA while such contract work is in progress to ascertain that the completed works or stages comply in all respects, with the standards and requirements set forth in the Contract Documents. Notwithstanding such inspection, the CONTRACTOR shall be held responsible for the acceptability of the finished works. The CONTRACTOR shall promptly correct all works determined by the PPA as failing to meet requirements, at CONTRACTOR's own expense.

ARTICLE XI

NON-ASSIGNMENT AND NO SUBCONTRACT

11.01 The CONTRACTOR shall not, without the written approval of the PPA, assign, transfer, pledge, sub-contract, or make any other disposition of interest in this Contract. Any unapproved assignment, transfer, pledge, sub-contract or any other disposition, shall be sufficient ground for the PPA to terminate or cancel this Contract *motu proprio* without need of judicial action pursuant to Section 19.04 hereof. Should the PPA give its written approval, such consent shall not relieve the CONTRACTOR of its responsibilities under the Contract. The CONTRACTOR shall ensure that the terms and conditions of any such sub-contract shall comply and conform with the terms and conditions of the Contract. The CONTRACTOR shall be responsible for the observance by any such sub-contractor of the terms and conditions of the Contract.

11.02 If any portion of the project sub-contracted is not prosecuted faithfully in accordance with the Contract, the sub-contractor shall be removed or replaced immediately upon the written request of the PPA, provided, however, that any failure of PPA to make such a request shall not relieve the CONTRACTOR of its obligations under the contract. PPA shall not be responsible for the delays or costs incurred by the CONTRACTOR because of the disapproval or removal of the sub-contractor or because of the late submittal of its or his approval.

ARTICLE XII

INSURANCE

12.01 The CONTRACTOR shall, prior to the commencement of work, secure the standard _____

CONTRACTOR's all risk insurance (CARI) from the Government Service Insurance System (GSIS) or any insurance company duly certified by the Insurance Commission as authorized to issue such insurance, to insure the works against all losses or damages arising from whatever cause for which the CONTRACTOR is responsible under the Contract.

ARTICLE XIII

WARRANTY

13.01 The CONTRACTOR shall assume full responsibility for the contract work from the time project construction commenced up to final acceptance thereof by the PPA and shall be held responsible for any damage or destruction of the works, except those occasioned by force majeure. The CONTRACTOR shall be responsible for the safety, protection, security, and convenience of its personnel, third parties, and the public at large, as well as the works, equipment, installation and the like to be affected by the construction work.

13.02 The defect liability period for the project covered by this Contract shall be one (1) year from project completion up to final acceptance thereof by the PPA. During this period, the CONTRACTOR shall undertake and complete the repair works, at its own expense, of any damage to the said project within NINETY (90) DAYS from the time the PPA General Manager or his duly authorized representative has issued an order to undertake repair. In case of failure or refusal to comply with this order, PPA shall undertake such repair works and the CONTRACTOR shall fully reimburse the former for all the expenses incurred therein upon demand.

13.03 After final acceptance of the project by the PPA, the CONTRACTOR shall be responsible for structural defects and/or failure of the said project within the period of FIFTEEN (15) YEARS from the date of final acceptance thereof by the PPA. For this purpose, the CONTRACTOR shall put up a warranty security in the form of letter of credit issued by a Universal or Commercial Bank or Bank guarantee confirmed by a Universal or Commercial Bank and acceptable to PPA in accordance with the following schedule:

- | | |
|--|---|
| a. Letter of Credit issued by a
Universal or Commercial Bank | - Five percent (5%) of the total contract price |
| b. Bank guarantee confirmed by a
Universal or Commercial Bank | - Ten percent (10%) of the total contract price |

The warranty security shall be denominated in Philippine Pesos, remain effective for one (1) year from the date of issuance of the Certificate of Final Acceptance by PPA and be returned only after the lapse of the said one (1) year period.

ARTICLE XIV

TAXES, LICENSES, PERMITS AND FEES

14.01 The CONTRACTOR's tax, licenses, permits, fees and all other taxes, fees or charges of whatever form, kind or nature due or which may be due to the national and/or local government units and/or its instrumentalities/agencies on account of the performance and completion of the work stipulated herein, fees for the testing of materials and samples and fees for the testing and inspection of the installation by all agencies having jurisdiction and all necessary and incidental expenses relative thereto including preparation of documents and notarial fees shall be paid for and obtained by the CONTRACTOR on its own account. Should the PPA be compelled to advance the same, PPA is hereby authorized to deduct the amount advanced from whatever amount due the CONTRACTOR from PPA.

14.02 The CONTRACTOR shall pay taxes in full and on time and that failure to do so shall entitle PPA to suspend payment to the CONTRACTOR. Further, the CONTRACTOR shall during the term of this Contract regularly present to PPA a tax clearance from the Bureau of Internal Revenue (BIR) as well as a copy of its income and business tax returns duly stamped and received by the BIR and duly validated with the tax payments made thereon.

ARTICLE XV

AGREEMENT MODIFICATION

15.01 No modification, alteration or waiver of any provision herein contained shall be binding on the Parties hereto unless evidenced by a written amendment signed by the parties hereof.

15.02 A variation order (change order/extra work order) may be issued by PPA under the conditions set forth in the applicable provisions of Republic Act No. 9184 and its Implementing Rules and Regulations.

15.03 The PPA may, at any time by written order and without notice to the Sureties, direct the CONTRACTOR to perform additional/extra work necessary to and within the General Scope of the project as bid and awarded. The CONTRACTOR shall be paid for additional/extra work items whose unit prices shall be derived based on the following:

- a. For additional/extra works duly covered by change orders involving work items which are exactly the same or similar to those in the original contract, the applicable unit prices of work items in the original contract shall be used.
- b. For additional/extra works duly covered by Extra Work Orders involving new work items that are not in the original contract, the unit prices of the new work items shall be based on the direct unit costs used in the original contract (e.g. unit cost of cement, rebars, form lumber, labor rate, equipment rental, etc.). All new components of the new work item shall be fixed prices, provided the same is acceptable to both PPA and the CONTRACTOR, and provided further that the direct unit costs of new components shall be based on the CONTRACTOR's estimate as validated by PPA via documented canvass in accordance with existing rules and regulations. The direct cost of the new work item shall then be combined with the mark-up factor (i.e., taxes and profit) used by the contractor in his bid to determine the unit price of the new work item.

15.04 Request for payment by the CONTRACTOR for any extra work shall be accompanied by a statement, with the approved supporting forms, giving a detailed accounting and record of amount for which he claims payment. Said request for payment shall be included with the CONTRACTOR's statement of progress payment.

ARTICLE XVI

SUSPENSION OF WORK

16.01 The PPA or its duly authorized representative shall have the authority to suspend the work wholly or partly by written order for such period as may be deemed necessary, due to force majeure or any fortuitous events or for failure on the part of the CONTRACTOR to correct bad conditions which are unsafe for workers or for the general public to carry out valid orders given by PPA or to perform any provisions of the Contract, or due to adjustment of plans to suit field conditions as found necessary during construction. The CONTRACTOR shall immediately comply with such order to suspend the work wholly or partly.

In case of total suspension, or suspension of activities along the critical path, which is not due to any fault of the CONTRACTOR, the elapsed time between the effective order of suspending operation

and the order to resume work shall be allowed the CONTRACTOR by adjusting the contract time accordingly.

ARTICLE XVII

INDIVISIBILITY OF OBLIGATION

17.01 It is the intent of the Contract that all the documents, annexes and addenda forming part hereof, shall be read together and that each and every provision or stipulation hereof be given full force, effect and applicability. However, in the event that one or more provisions or stipulations herein be declared null and void by the courts, or otherwise rendered ineffective, the remaining provisions and stipulations shall not be affected thereby.

ARTICLE XVIII

ARBITRATION/REMEDY AND RELIEF

18.01 Should there be any dispute or difference of any kind whatsoever which shall arise between the parties in connection with the implementation of this Contract; the Parties hereto shall make every effort to resolve amicably such dispute or difference by mutual consultation. In the event that such dispute or disagreement be not resolved to their mutual satisfaction, the matter shall be submitted to arbitration in the Philippines according to the provisions of Republic Act No. 876, otherwise known as the "Arbitration Laws" and Republic Act No. 9285; otherwise known as the "Alternative Dispute Resolution Act of 2004". Provided, however, that disputes that are within the competence of the Construction Industry Arbitration Commission to resolve shall be submitted thereto. Provided, further, that, by mutual agreement, the parties hereto may agree in writing to resort to other alternative modes of dispute resolution. Provided, finally, that the arbitration proceeding shall be without prejudice to the right of PPA to rescind or terminate this contract in accordance with Article XIX, Section 19.04 hereof.

18.02 Should the PPA be constrained to resort to court action to enforce or safeguard its rights and interests under this Contract, the CONTRACTOR shall be liable to the PPA for attorney's fees in an amount equivalent to Twenty Percent (20%) of the total sum claimed in the complaint, exclusive of other damages and the expenses of litigation. Venue of all court actions in connection with or arising out of this contract shall be laid exclusively in the proper court of the City of Manila.

18.03 It is clearly understood that in case a dispute or disagreement arises between the PPA and the CONTRACTOR regarding the manner by which the latter is performing works, the CONTRACTOR shall follow the instruction of the PPA relative thereto, otherwise, it shall have no right to ask for arbitration or go to court for relief.

ARTICLE XIX

OTHER COVENANTS

19.01 It is expressly agreed and understood that in case of irreconcilable conflict between the provisions of this Contract and the provisions of any of the contract documents, the former shall be controlling.

19.02 It should also be clearly understood that any payment or failure of the PPA to demand compliance with any of the terms and conditions of this Contract or any act of liberality on the part of the PPA shall not be construed or considered as a waiver on the part of the PPA for the enforcement of this Contract, nor shall it relieve the CONTRACTOR of any of its obligations provided thereunder.

19.03 Under no circumstances shall the PPA be held liable for the payment of any extra work, or extra

cost of work, change of work, or change order undertaken without the prior written approval of the PPA to perform said work.

19.04 Notwithstanding any provision to the contrary, the PPA has the right to terminate, cancel and/or rescind this Contract *motu proprio*, in case of breach thereof by the CONTRACTOR, without need of judicial action by giving at least TEN (10) Days written Notice to that effect to the CONTRACTOR, which Notice shall be final and binding on all the parties. In such event, the PPA may take over and continue the project, and the contracts and agreements entered into by the CONTRACTOR with third parties, which the PPA in its discretion, may want to assume are hereby conclusively deemed assigned to the PPA. For this purpose, the CONTRACTOR here agrees and obligates itself to incorporate or cause to be incorporated in any contract or agreement with third parties, as same is connected with or related to the performance of any or all of the CONTRACTOR's obligations and undertakings hereunder, a stipulation providing for its assignability to and assumption by the PPA, at the option of the PPA. It is further agreed and understood that upon receipt of the Notice mentioned above, the CONTRACTOR cannot remove, withdraw or pull-out any of the equipment, machineries, tools, materials, and/or supplies brought to the project site without the written approval of the PPA.

Within thirty (30) days after termination, cancellation or rescission of this Contract, the Parties shall settle their respective accountabilities as of the date of termination, cancellation or rescission, including the refund of any and all advances made plus legal interest from date of receipt of the amount or amounts advanced.

19.05 It is expressly agreed that whenever the CONTRACTOR is behind schedule in its contract work and incurs ten (10%) percent or more negative slippage based on its approved PERT/CPM, the PPA may undertake the whole or portion of the unfinished work by administration or by negotiation through another qualified CONTRACTOR.

Whenever a work activity in the project is not being done on schedule per approved PERT/CPM, the PPA shall notify and direct the CONTRACTOR to immediately undertake such work activity. If within fifteen (15) days from receipt of such notice, the CONTRACTOR fails to start work and to show a satisfactory performance, PPA may take over the whole or portion of such work and have such work done by administration or award the same to another qualified contractor through negotiated contract at the current valuation price.

19.06 The PPA has the right to require the CONTRACTOR to supply and provide the required tools, materials, supplies, equipment, facilities, and to increase the number of workers assigned to the work when exigencies of the service so require. Should the CONTRACTOR fail, refuse or neglect to comply with the same, PPA shall have the option to take over the project in whole or in part or award the same to another CONTRACTOR through negotiated contract at the current valuation price. Any increase in cost which the PPA may incur as a result of its take-over of the project pursuant to Sections 19.04, 19.05 and 19.06 shall be borne by and charged to the CONTRACTOR.

19.07 The CONTRACTOR shall provide and do everything necessary to perform its obligations under this Contract according to the true intent and meaning of all the Contract Documents taken together, whether the same may or may not be shown or described particularly in the drawings, plans and specifications provided that the same can be inferred therefrom. Should the CONTRACTOR find discrepancy in the drawings, plans and specifications, it shall immediately refer the same to the PPA, whose decision shall be followed.

19.08 The CONTRACTOR agrees and obligates itself to restore to its original condition, on its own account, any public road, pavement, streets or open space and/or public or private property which are excavated or in any manner used by the CONTRACTOR in connection with the performance of its obligations under this Contract.

19.09 The CONTRACTOR agrees and binds itself to hold and save PPA free and harmless from any

damage, claims and rights of action by third parties arising out of or by reason of this Contract and all injuries that may be suffered by PPA due to the failure, negligence, delay or conduct on the part of the CONTRACTOR and/or its employees in the performance of their obligations under this Contract.

19.10 No final payment of the contract shall be made to the CONTRACTOR without the Certificate of Completion and/or Acceptance from the Office of the Municipal Engineer of the Municipality concerned of the local works to be restored mentioned in Section 19.08 hereof, otherwise the cost of restoration shall be made available out of any collectible/receivable by the CONTRACTOR from the PPA.

19.11 Notwithstanding any extra work, change of work or orders made, if any, by the PPA, it is agreed that the same shall be completed within the period herein fixed and provided.

19.12 The CONTRACTOR shall hold the PPA free and harmless from whatever suit and hereby binds and obligates itself to indemnify the PPA for any and all liabilities, losses, damages, judgment, awards, fines, penalties and all expenses, legal or otherwise, of whatever kind and nature, arising from and by reason of this Contract, due to the fault, negligence, act, omission, delay, conduct, breach of trust or non-observance or violation of this Contract or any stipulation and warranty by the CONTRACTOR and/or any of its employees, agents, representatives or sub-contractors.

ARTICLE XX

SPECIAL REPRESENTATION

20.01 The CONTRACTOR hereby represents that all documents it submitted which form integral parts hereof are authentic and duly executed with all the required formalities for the same, and that the facts and/or date contained therein are true and correct. A breach of this representation including all misrepresentation in the documents or suppression of material facts therein, which if known, could have disqualified the CONTRACTOR such that this contract would not have been made and entered into, gives the PPA the immediate right or recourse to motu proprio rescind, abrogate or otherwise terminate the contract without need of judicial action, in accordance with Section 19.04 hereof.

20.02 The CONTRACTOR hereby warrants that it has not given nor promised to give any money, gift or any material favor/consideration to any official or employee of the PPA to secure this Contract; that any violation of this warranty shall be sufficient ground for the PPA to revoke or cancel this Contract extrajudicially or without need of judicial intervention.

ARTICLE XXI

BUDGETARY REQUIREMENT

21.01 The parties hereto hereby adopt and incorporate herein by reference, Letter of Instruction No. 767 dated 16 November 1978, issued by the Office of the President, as implemented by the Letter Circular, dated 7 December 1978, of the Department of Budget and Management.

ARTICLE XXII

EFFECTIVITY

22.01 This Contract shall become effective after the same shall have been signed by the Parties hereof.

IN WITNESS WHEREOF, the Parties have hereunto signed this Contract on the date and place first hereinabove written.

PHILIPPINE PORTS AUTHORITY

By:

Jay Daniel R. Santiago
General Manager

By:

WITNESSES:

Mark Jon S. Palomar
Chairperson Head Office Bids and Awards Committee

ACKNOWLEDGMENT

REPUBLIC OF THE PHILIPPINES)
City of _____) S.S.

BEFORE ME, a Notary Public for and in the City of _____, this ____ day of _____, 20____, personally appeared the following:

NAME	Proof of Identity	DATE	PLACE
Jay Daniel R. Santiago	_____	_____	_____

Known to me and to me known to be the same persons who executed the foregoing instrument as:

POSITION	COMPANY	CTC No.	DATE	PLACE
General Manager	Philippine Ports Authority	_____	_____	_____

and they acknowledged to me that the same is their own free act and deed as well as the free and voluntary act of the corporation they represent.

This foregoing instrument is a Contract for the *Improvement of Existing Rock Causeway, Port of San Roque, Daram, Samar*, consisting of 13 pages, including this page on which this acknowledgment is written, signed by the parties and their instrumental witnesses on each and every page thereof.

IN WITNESS WHEREOF, I have hereunto affixed my hand and notarial seal on these presents at the place and on the date first above written

Doc. No. _____;
Page No. _____;
Book No. _____;
Series of 20 _____;