

BILL OF QUANTITIES
CONSTRUCTION OF BACK-UP AREA
 Port of Lipata, Lipata, Antique

NO. (1)	DESCRIPTION OF WORK (2)	UNIT (3)	QTY. (4)	UNIT PRICE (Pesos) (5)	AMOUNT (Pesos) (4) x (5)
BILL NO. 1	GENERAL EXPENSES				
1.01	Mobilization/demobilization and cleaning	lot	1		
1.02	Provide temporary site office and residence for the Engineer and staff	lot	1		
1.03	Maintain temporary site office and residence for the Engineer and staff	mo.	12		
1.04	Provide Construction Safety and Health Program in the execution of the project.	mo.	12		
TOTAL FOR BILL NO. 1					-

BILL OF QUANTITIES
CONSTRUCTION OF BACK-UP AREA
 Port of Lipata, Lipata, Antique

NO. (1)	DESCRIPTION OF WORK (2)	UNIT (3)	QTY. (4)	UNIT PRICE (Pesos) (5)	AMOUNT (Pesos) (4) x (5)
BILL NO. 2	PROPOSED RECLAMATION				
2.01	<i>Demolition work:</i> Chip-off existing R.C. Curb, flush to deck level and smoothen with mortar	l.m.	92		
2.02	Chip-off existing Deflector wall, flush to deck level and smoothen with mortar	l.m.	29		
2.03	<i>Piling works:</i> Supply and deliver to site RC Sheet Corner Piles a) RC Sheet Corner Pile 1 b) RC Sheet Corner Pile 2 c) RC Sheet Corner Pile 3 d) RC Sheet Corner Pile 4 e) RC Sheet Corner Pile 5	l.m. l.m. l.m. l.m. l.m.	10 10 10 10 10		
2.04	Supply and deliver to site 0.35 x 0.60m PSC Sheet Piles.	l.m.	1,140		
2.05	Handle, pitch and drive 0.35 x 0.60m PSC Sheet Piles and RC Corner Piles	l.m.	1,190		
2.06	Chipping and cutting of driven sheet piles including disposal of debris	unit	119		
2.07	a) Supply and install 32mm dia x 10 m tie-rod including accessories b) Supply and install 32mm dia x 9.40 m tie-rod including accessories c) Supply and install 32mm dia x 2.33 m tie-rod including accessories	set set set	28 1 1		
2.08	Reinforced Concrete Works: Supply and place 3,500 psi. concrete for retaining wall, coping wall, anchor blocks and RC curb	cu.m	240		

BILL OF QUANTITIES
CONSTRUCTION OF BACK-UP AREA
 Port of Lipata, Lipata, Antique

NO. (1)	DESCRIPTION OF WORK (2)	UNIT (3)	QTY. (4)	UNIT PRICE (Pesos) (5)	AMOUNT (Pesos) (4) x (5)
2.09	Supply and install steel reinforcement for retaining wall, coping wall, anchor blocks and RC Curb	kg	24,564		
2.10	Supply and install angle bar (hot-dipped galvanized, 100mm x 100mm x 10mm) at construction joint including accessories and chipping of existing structure for anchoring of dowel bars	l.m.	123		
	Rockworks:				
2.11	Supply and place 50-100 kg. Rocks	cu.m.	1,280		
2.12	Supply and place 1000 kg. Rocks.	cu.m.	459		
2.13	Supply and place rubble concrete	cu.m.	4		
	Supply and place concrete blocks				
2.14	a) Concrete Block 1	pc	1		
	b) Concrete Block 2	pc	1		
	c) Concrete Block 3	pc	2		
	Fill:				
2.15	Supply and install Geotextile Fabric.	sq.m	1,888		
2.16	Supply and place gravel bedding (200mm thk)	cu.m.	22		
2.17	Supply and place 2,500 psi. lean concrete (100mm thk)	cu.m.	11		
2.18	Supply and place Sand and Gravel fill.	cu.m.	5,048		

BILL OF QUANTITIES
CONSTRUCTION OF BACK-UP AREA
 Port of Lipata, Lipata, Antique

NO. (1)	DESCRIPTION OF WORK (2)	UNIT (3)	QTY. (4)	UNIT PRICE (Pesos) (5)	AMOUNT (Pesos) (4) x (5)
2.19	Supply, spread and compact Selected fill.	cu.m.	1,482		
2.20	Supply, spread and compact gravel base course (150mm thk.)	cu.m	273		
2.21	Supply, spread and compact 10% cement treated base (150mm thk.)	cu.m.	273		
2.22	Supply and spread leveling sand (50mm thk.)	cu.m.	91		
2.23	ICBP and Shear Keys: Supply and install Interlocking Concrete Block Pavement (100mm x 200mm x 125mm)	sq.m.	1,819		
2.24	Construct shear keys including steel reinforcement	sq.m.	167		
2.25	Drainage System: Construct lateral drain including reinforcement	l.m	63		
2.26	Fabricate, supply and install hot-dipped galvanized trench grate for lateral drain cover	l.m	63		
TOTAL FOR BILL NO. 2					-

BILL OF QUANTITIES
CONSTRUCTION OF BACK-UP AREA
 Port of Lipata, Lipata, Antique

NO. (1)	DESCRIPTION OF WORK (2)	UNIT (3)	QTY. (4)	UNIT PRICE (Pesos) (5)	AMOUNT (Pesos) (4) x (5)
BILL NO. 3	PORT LIGHTING SYSTEM				
3.01	Supply, deliver and install electric wires and cables a) 2.0mm ² THHN b) 3.5mm ² THHN c) 5.5mm ² THHN	l.m. l.m. l.m.	75 300 10		
3.02	Supply, deliver and install conduit pipe 20mmØ including fittings and accessories	l.m.	123		
3.03	Construct RC lamp post foundation	no.	3		
3.04	Construct RC duct bank	l.m.	4		
3.05	Construct R.C. hand hole	no.	2		
3.06	Supply, deliver and install single angle bar, hot dip galvanized floodlight steel tapered lamp post (10.00m ht.)	unit	3		
3.07	Supply, deliver and install floodlight fixture SON-T 250 watt, HPS	pc.	6		
3.08	Supply, deliver and install protective devices Main: 30AT, 2P, 220V, C.B, NEMA 3R Branch: 5- 15AT, 2P, 220V, C.B	assy	1		
TOTAL FOR BILL NO. 3					-

BILL OF QUANTITIES
CONSTRUCTION OF BACK-UP AREA
 Port of Lipata, Lipata, Antique

NO. (1)	DESCRIPTION OF WORK (2)	UNIT (3)	QTY. (4)	UNIT PRICE (Pesos) (5)	AMOUNT (Pesos) (4) x (5)
BILL NO. 4	REIMBURSABLE ITEMS				
4.01	Provide Office equipment, computer system, digital/video camera and service vehicle for the use of the Engineer and staff	lot	1		
TOTAL FOR BILL NO. 4					-

BASIS OF PAYMENT FOR WORK ITEMS INCLUDED IN THE PROPOSAL

The work items included in the proposal and the basis of payments are as follows:

BILL NO. 1

GENERAL EXPENSES

Item 1.01 Mobilization, demobilization and cleaning

The quantity to be paid for shall be the actual number of minimum equipment requirement enumerated on the bid documents mobilized, demobilized and cleaning of the site and accepted by the Engineer. The contract lump sum price shall be full compensation for furnishing all materials, labor, equipment, tools and incidentals necessary to mobilize and demobilize all the minimum equipment requirement enumerated on the bid documents including cleaning of the site. Fifty percent (50%) of the total amount shall be payable after the mobilization activity while the remaining (50%) payable after demobilization and cleaning.

Item 1.02 Provide temporary site office and residence for the engineer and staff

The quantity to be paid for shall be the site office building, constructed and completed in accordance with the plans and specifications and accepted by the Engineer. The contract lump-sum price shall be full compensation for furnishing all materials, labor, equipment, tools and incidentals necessary to complete the work.

Item 1.03 Maintain temporary site office and residence for the engineer and staff

The quantity to be paid for shall be the actual services rendered in maintaining the site office and accepted by the Engineer. The contract unit price shall be full compensation for furnishing all materials, labor, equipment, tools and incidentals necessary to complete the maintenance of the temporary site office and residence as well as other expenses such as provision for electric power, telephone bill, potable water supply, janitorial and security services.

Item 1.04 Provide construction safety and health program in the execution of the project

The quantity to be paid for shall be the actual implementation of construction safety and health program and accepted by the Engineer. The contract unit price shall be full compensation for furnishing all materials, labor, equipment, tools and incidentals necessary to complete the implementation of the Construction Safety and Health Program, as required and approved by the Department of Labor and Employment (DOLE).

BILL NO. 2

PROPOSED RECLAMATION

Demolition Works:

Item 2.01 Chip-off existing R.C curb, flush to deck level and smoothen with mortar

The quantity to be paid for shall be the actual length in linear meter of chipped-off existing R.C curb, flushed to deck level and smoothened with mortar in accordance with the plans and specifications and accepted by the Engineer. The contract unit price

shall be full compensation for furnishing all materials, labor, equipment, tools and incidentals necessary to complete the work.

Item 2.02 Chip-off existing deflector wall flush to deck level and smoothen with mortar

The quantity to be paid for shall be the actual length in linear meter of chipped-off existing deflector wall, flushed to deck level and smoothened with mortar in accordance with the plans and specifications and accepted by the Engineer. The contract unit price shall be full compensation for furnishing all materials, labor, equipment, tools and incidentals necessary to complete the work.

Piling Works:

Item 2.03 Supply and deliver to site R.C. sheet corner piles of various sections

The quantity to be paid for shall be the actual length in linear meter of R.C. sheet corner piles of various sections, supplied and delivered in accordance with the plans and specifications and accepted by the Engineer. The contract unit price shall be full compensation for furnishing all materials, labor, equipment, tools and incidentals necessary to complete the work.

Item 2.04 Supply and deliver to site 0.35m x 0.60m PSC sheet piles

The quantity to be paid for shall be the actual length in linear meter of PSC sheet piles (0.35m x 0.60m), supplied and delivered in accordance with the plans and specifications and accepted by the Engineer. The contract unit price shall be full compensation for furnishing all materials, labor, equipment, tools and incidentals necessary to complete the work.

Item 2.05 Handle, pitch and drive 0.35 x 0.60m PSC sheet piles and R.C. corner piles

The quantity to be paid for shall be the actual length in linear meter of PSC sheet piles and R.C. corner piles, driven in accordance with the plans and specifications, measured from the tip of piles to cut-off elevation and accepted by the Engineer. The contract unit price shall be full compensation for furnishing all materials, labor, equipment, tools and incidentals necessary to complete the work.

Item 2.06 Chipping and cutting of driven sheet piles including disposal of debris

The quantity to be paid for shall be the actual number per unit of driven sheet piles, chipped-off/cut-off to the required elevation in accordance with the plans and specifications and disposed at the designated area and accepted by the Engineer. The contract unit price shall be full compensation for furnishing all materials, labor, equipment, tools and incidentals necessary to complete the work.

Item 2.07 Supply and install Ø 32mm tie-rod including accessories and of various lengths

The quantity to be paid for shall be the actual number of tie-rod supplied and installed in accordance with the plans and specifications and accepted by the Engineer. The contract unit price shall be full compensation for furnishing all materials, labor, equipment, tools and incidentals necessary to complete the work.

Reinforced Concrete Works:

Item 2.08 Supply and place 3,500 psi concrete for retaining wall, coping wall, anchor blocks and R.C curb

The quantity to be paid for shall be the actual volume in cubic meters of 3,500 psi concrete supplied, set-in-place and finished in accordance with the plans and specifications and accepted by the Engineer. The contract unit price shall be full compensation for furnishing all materials, labor, equipment, tools and incidentals necessary to complete the work.

Item 2.09 Supply and install steel reinforcement for retaining wall, coping wall, anchor blocks and R.C curb

The quantity to be paid for shall be the actual weight in kilogram of steel reinforcement, supplied and installed in accordance with the plans and specifications and accepted by the Engineer. The contract unit price shall be full compensation for furnishing all materials, labor, equipment, tools and incidentals necessary to complete the work.

Item 2.10 Supply and install angle bar (hot-dipped galvanized, 100mm x 100mm x 10mm) for construction joint including accessories and chipping of existing structure for anchoring of dowel bars

The quantity to be paid for shall be the actual length in linear meters of supplied and installed hot-dipped galvanized angle bar (100mm x 100mm x 10mm) for construction joint including accessories and chipping of existing structure for anchoring of dowel bars in accordance with the plans and specifications and accepted by the Engineer. The contract unit price shall be full compensation for furnishing all materials, labor, equipment, tools and incidentals necessary to complete the work.

Rockworks:

Item 2.11 Supply and place 50 - 100 kg. rocks

The quantity to be paid for shall be the actual volume in cubic meters of 50 - 100 kgs. rocks, supplied and set-in-place in accordance with the sections as shown on the plans and specifications and accepted by the Engineer. Hydrographic/Topographic Surveys before and after placing of rocks shall be made to determine the actual elevations along the cross sections and the actual quantities for payment. Volume due to settlement as established using settlement plates shall also be considered for payment. The contract unit price shall be full compensation for furnishing all materials, labor, equipment, tools and incidentals necessary to complete the work.

Item 2.12 Supply and place 1,000 kg. rocks

The quantity to be paid for shall be the actual volume in cubic meters of 1,000 kg. rocks, supplied and set-in-place in accordance with the sections as shown on the plans and specifications and accepted by the Engineer. Hydrographic/Topographic Surveys before and after placing of rocks shall be made to determine the actual elevations along the cross sections and the actual quantities for payment. Volume due to settlement as established using settlement plates shall also be considered for payment. The contract unit price shall be full compensation for furnishing all materials, labor, equipment, tools and incidentals necessary to complete the work.

Item 2.13 Supply and place rubble concrete

The quantity to be paid for shall be the actual volume in cubic meters of rubble concrete, supplied and set-in-place in accordance with the sections as shown on the plans and specifications and accepted by the Engineer. The contract unit price shall be full compensation for furnishing all materials, labor, equipment, tools and incidentals necessary to complete the work.

Item 2.14 Supply and place concrete blocks of various sizes

The quantity to be paid for shall be the number per piece of concrete blocks of various sizes, supplied and set-in-place in accordance with the sections as shown on the plans and specifications and accepted by the Engineer. The contract unit price shall be full compensation for furnishing all materials, labor, equipment, tools and incidentals necessary to complete the work.

Fill:

Item 2.15 Supply and install geotextile fabric

The quantity to be paid for shall be the actual surface area in square meters of geotextile filter fabric, supplied, installed and set-in-place in accordance with the plans and specifications and accepted by the Engineer. The contract unit price shall be full compensation for furnishing all materials, labor, equipment, tools and incidentals necessary to complete the work.

Item 2.16 Supply and place gravel bedding (200mm thk.)

The quantity to be paid for shall be the actual volume in cubic meters of gravel bedding (200mm thk.), supplied and set-in-place in accordance with the plans and specifications and accepted by the Engineer. Hydrographic/Topographic Surveys before and after placing of sand and gravel shall be made to determine the actual elevations along the cross sections and the actual quantities for payment. Volume due to settlement as established using settlement plates shall also be considered for payment. The contract unit price shall be full compensation for furnishing all materials, labor, equipment, tools and incidentals necessary to complete the work.

Item 2.17 Supply and place 2,500 psi lean concrete (100mm thk.)

The quantity to be paid for shall be the actual volume in cubic meters of lean concrete (2,500 psi, 100mm thk.), supplied and set-in-place in accordance with the sections as shown on the plans and specifications and accepted by the Engineer. The contract unit price shall be full compensation for furnishing all materials, labor, equipment, tools and incidentals necessary to complete the work.

Item 2.18 Supply and place sand and gravel fill

The quantity to be paid for shall be the actual volume in cubic meters of sand and gravel fill, supplied and set-in-place in accordance with the plans and specifications and accepted by the Engineer. Hydrographic/Topographic Surveys before and after placing of sand and gravel shall be made to determine the actual elevations along the cross sections and the actual quantities for payment. Volume due to settlement as established using settlement plates shall also be considered for payment. The contract unit price shall be full compensation for furnishing all materials, labor, equipment, tools and incidentals necessary to complete the work.

Item 2.19 Supply, spread and compact selected fill

The quantity to be paid for shall be the actual volume in cubic meters of selected fill materials, supplied, spread and compacted in accordance with the plans and specifications and accepted by the Engineer. Topographic Surveys before and after placing of selected fill shall be made to determine the actual elevations along the cross sections and the actual quantities for payment. The contract unit price shall be full compensation for furnishing all materials, labor, equipment, tools and incidentals necessary to complete the work.

Item 2.20 Supply, spread and compact gravel base course (150mm thk.)

The quantity to be paid for shall be the actual volume in cubic meters of gravel base course (150mm thk.), supplied, spread and compacted in accordance with the plans and specifications and accepted by the Engineer. Topographic Surveys before and after placing of base course shall be made to determine the actual elevations along the cross sections and the actual quantities for payment. The contract unit price shall be full compensation for furnishing all materials, labor, equipment, tools and incidentals necessary to complete the work.

Item 2.21 Supply, spread and compact 10% cement treated base course (150mm thk.)

The quantity to be paid for shall be the actual volume in cubic meters of cement treated base course (150mm thk.) supplied, spread and compacted in accordance with the plans and specifications and accepted by the Engineer. The contract unit price shall be full compensation for furnishing all materials, labor, equipment, tools and incidentals necessary to complete the work.

Item 2.22 Supply and spread leveling sand (50mm thk.)

The quantity to be paid for shall be the actual volume in cubic meters of leveling sand (50mm thk.) supplied and spread in accordance with the plans and specifications and accepted by the Engineer. The contract unit price shall be full compensation for furnishing all materials, labor, equipment, tools and incidentals necessary to complete the work.

ICBP and Shear Keys:

Item 2.23 Supply and install interlocking concrete block pavement (100mm x 200mm x 125mm)

The quantity to be paid for shall be the actual area in square meters of ICBP, supplied, delivered and installed in accordance with the plans and specifications and accepted by the Engineer. The contract unit price shall be full compensation for furnishing all materials, labor, equipment, tools and incidentals necessary to complete the work.

Item 2.24 Construct shear keys including steel reinforcement

The quantity to be paid for shall be the actual area in square meters of concrete shear keys supplied, set-in-place and finished including installation of fabricated steel reinforcements in accordance with the plans and specifications and accepted by the Engineer. The contract unit price shall be full compensation for furnishing all materials, labor, equipment, tools and incidentals necessary to complete the work.

Drainage System:

Item 2.25 Construct lateral drain including steel reinforcement

The quantity to be paid for shall be the actual length in linear meters of lateral drain constructed, set-in-place and finished including installation of fabricated steel reinforcements in accordance with the plans and specifications and accepted by the Engineer. The contract unit price shall be full compensation for furnishing all materials, labor, equipment, tools and incidentals necessary to complete the work.

Item 2.26 Fabricate, supply and install hot-dipped galvanized trench gate for lateral drain cover

The quantity to be paid for shall be the actual length in linear meters of hot-dipped galvanized trench gate for lateral drain cover fabricated, supplied and set-in-place and finished including installation in accordance with the plans and specifications and accepted by the Engineer. The contract unit price shall be full compensation for furnishing all materials, labor, equipment, tools and incidentals necessary to complete the work.

BILL NO. 3

PORT LIGHTING SYSTEM

Item 3.01 Supply, deliver and install electric wires and cables of various sizes

The quantity to be paid for shall be the actual length in linear meters of electric wires and cables of various sizes supplied, delivered and installed and in accordance with plans and specifications and accepted by the Engineer. The contract unit price shall be full compensation for furnishing all materials, labor, equipment, tools and incidentals necessary to complete the work.

Item 3.02 Supply, deliver and install conduit pipe 20mm Ø including fittings and accessories

The quantity to be paid for shall be the actual length in linear meters of conduit pipe 20mm Ø including fittings and accessories supplied, delivered and installed and in accordance with plans and specifications and accepted by the Engineer. The contract unit price shall be full compensation for furnishing all materials, labor, equipment, tools and incidentals necessary to complete the work.

Item 3.03 Construct R.C lamp post foundation

The quantity to be paid for shall be the actual number of R.C lamp post foundation constructed in accordance with the plans and specifications and accepted by the Engineer. The contract unit price shall be full compensation for furnishing all materials, labor, equipment, tools and incidentals necessary to complete the work.

Item 3.04 Construct R.C duct bank

The quantity to be paid for shall be the actual length in linear meter of R.C duct bank constructed in accordance with the plans and specifications and accepted by the Engineer. The contract unit price shall be full compensation for furnishing all materials, labor, equipment, tools and incidentals necessary to complete the work.

Item 3.05 Construct R.C hand hole

The quantity to be paid for shall be the actual number of R.C hand hole constructed in accordance with the plans and specifications and accepted by the Engineer. The contract unit price shall be full compensation for furnishing all materials, labor, equipment, tools and incidentals necessary to complete the work.

Item 3.06 Supply, deliver and install single angle bar, hot dip galvanized floodlight steel tapered lamp post (10.0m ht.)

The quantity to be paid for shall be the actual unit of single angle bar hot dip galvanized floodlight steel tapered lamp post supplied, delivered and installed and in accordance with the plans and specifications and accepted by the Engineer. The contract unit price shall be full compensation for furnishing all materials, labor, equipment, tools and incidentals necessary to complete the work.

Item 3.07 Supply, deliver and install floodlight fixture SON-T 250 watt, HPS

The quantity to be paid for shall be the actual number of floodlight fixture SON-T 250w, HPS supplied, delivered and installed and in accordance with the plans and specifications and accepted by the Engineer. The contract unit price shall be full compensation for furnishing all materials, labor, equipment, tools and incidentals necessary to complete the work.

Item 3.08 Supply, deliver and install protective devices

The quantity to be paid for shall be the actual assembly of protective devices supplied, delivered and installed and in accordance with the plans and specifications and accepted by the Engineer. The contract unit price shall be full compensation for furnishing all materials, labor, equipment, tools and incidentals necessary to complete the work.

BILL NO. 4

REIMBURSABLE ITEMS

Item 4.01 Provide office equipment, computer system, digital/video camera and service vehicle for the use of the engineer and staff

The quantity to be paid for shall be the actual number of office equipment, computer system, digital/video camera and vehicle enumerated on the bid documents, supplied and delivered in accordance with the specifications and accepted by the Engineer. The contract lump sum price shall be full compensation for providing all the reimbursable items. The price for the vehicle shall include LTO registration and comprehensive insurance. The Contractor's Profit and Overhead, Contingencies and Miscellaneous (OCM) should not be included in the cost of reimbursable items. The amount of bid should not exceed the maximum amount stated in the Bid Data Sheet [ITB Clause 13.1 (a)]. Claims for payment shall be supported by Official Receipt(s) (OR). The amount to be paid for shall be the price indicated in the OR but should not exceed the contract lump sum price.

FACILITIES TO BE PROVIDED FOR THE ENGINEER & HIS STAFF

TEMPORARY FACILITIES OF THE CONTRACTOR

The Contractor shall provide and maintain such temporary offices, stores, workshops, latrines, housing and messing accommodations as are necessary. The location, dimension and layout of such buildings and places shall be subject to the approval in writing of the Engineer. By the end of the contract, the Contractor shall remove all buildings and the area shall be cleared and graded as required by the Engineer.

SITE OFFICE FOR THE ENGINEER & STAFF

The Contractor shall provide and maintain a one storey building for use of the Engineer and staff, including all the necessary electricity, water, communication services and consumables. The field office shall be constructed in accordance with the plans and specifications (see Annex 6), and shall contain the office equipment specified in Annex 2.a – Reimbursable Items. The field office shall be located within the area to be determined by the Engineer in coordination with PDO/PMO concerned. The field office shall be ready for occupancy and use by the Engineer and staff within two (2) months of the commencement of works.

Display	15.6 in. LED Display	19" LCD Color Monitor (widescreen) Samsung / LG
OS Bundled (Certification/License)	Windows 7 Business Full Product, Should includes Drivers and Recovery CD	
Office Software	MS Office 2007 Enterprise Edition, Should include media kit CD	
Anti-Virus Software	Symantec 11	
Power Management	ACPI - compliant	
System Compliance	PC 2001, NSTL Y2K, Energy Star, ISO 9001, ISO 14001, BVQi	
EMI Certification	FCC, CE, C - tick, BSMI	
Safety Certification	CB, UL, CUL/CSA, CCEE, CCIB, Nemko, B-Mark, TUV/GS	
Printer	K7100 or equivalent, A3 capable	
I/O Interface	-	4-USB, 1-Parallel, 2-Serial, 2-Mic-in Jacks, 2-PS/2, 1-RJ-45, 1-Line-in Jack, 1-Line- out Jack, 1-Headphone Jack, 1-MIDI
I/O Expansion	-	1-AGP, 3-PCI
Audio	-	Embedded AC '97 3D PCI Audio w/ 16 bit Sound Blaster Compatibility
Speakers	-	External Speaker
Keyboard	-	USB Keyboard w/ Internet & email Access keys, Audio/Video controls, Volume dial & mute, Suspend / resume button
Mouse	-	USB Scroll Mouse w/ Pad / Optical Mouse
UPS	-	A1 PLUS 700, Input : 230V, 50/60 Hz., 4.04 A Output : 230V, 50/60 Hz., 3.04 A Watts/VA : 462W/700VA
Table	-	Computer Table
Chair	-	Computer Chair

DIGITAL CAMERA / VIDEO CAMERA

The Contractor shall provide within thirty (30) days after notice to commence work, **one (1) unit** "Brand New" Digital Camera/Video Camera for use of the PPA Engineer and staff. The unit shall be the property of PPA. Operation and maintenance shall be borne by PPA.

The Camera shall be a 14 Megapixel 5x zoom, waterproof, 1.5m – 2.0m shockproof, 3D photo shooting. The Video Camera shall be 120GB Disk Drive, Exmor "R" CMOS Sensor and with 12 Mega Pixels still image capture with professional quality lenses.

SERVICE VEHICLE

The Contractor shall provide within thirty (30) days after notice to commence work, **one (1) unit** "Brand New" Transportation Service Vehicle for the use of the Engineer and staff. The vehicle to be provided by the Contractor shall be to the satisfaction of the Engineer. The vehicle shall comply in all respect with all relevant national or local laws, statutes and regulations. The unit shall become the property of PPA. Operations and maintenance shall be borne by PPA.

The vehicle shall be a passenger van/Sports Utility Vehicle (SUV) with an engine displacement of not more than 3000cc, diesel-fed, and with an engine not exceeding 4 cylinders, or;

Multi-Purpose Vehicle (MPV) / Asian Utility Vehicle (AUV) with an engine displacement of not more than 2500cc, diesel-fed, with an engine not exceeding 4 cylinders.

MINIMUM EQUIPMENT REQUIREMENTS

1	unit	Crawler crane (30 t, minimum), owned
1	unit	Crawler crane (20 t, minimum), owned
1	unit	Diesel Hammer (7,500 – 10,500 kg.m), owned
1	unit	Road Roller (10 t, vibratory, minimum), owned
1	unit	Road Grader (125 hp., minimum), owned
1	unit	Payloader (80 hp., minimum), owned
1	unit	Backhoe (0.40 cu.m, 91 hp., minimum), owned
1	unit	Forklift (1.36 t, minimum), owned
1	unit	Dump Truck (8 cu.m, minimum), owned
1	unit	Drop Hammer (2 t, minimum), owned
1	unit	Water Truck with Pump (1,000 gal., minimum), owned
1	unit	Air Compressor (250 cfm, minimum), owned
1	unit	Chipping Hammer, owned
2	units	Jackhammer, owned
2	units	Concrete Mixer (1 bagger, minimum), owned
2	units	Concrete Vibrator (3.5 hp., minimum), owned
2	units	Bar Cutter (electric, 25mm dia., minimum), owned
2	units	Bar Bender (electric, 25mm dia., minimum), owned
2	units	Plate Compactor, vibratory (5 hp., minimum), owned
1	unit	Welding Machine (400 amp., minimum), owned
1	unit	Oxy/Acetylene cutting outfit, owned
1	unit	Clamshell, owned

CONSTRUCTION SAFETY AND HEALTH REQUIREMENTS

The Contractor shall implement the construction safety and health program in accordance with the applicable provisions of the Occupational Safety and Health Standards (OSHS) of the Department of Labor and Employment (DOLE).

The Contractor, subject to the approval of the Engineer shall provide and maintain throughout the duration of the contract a medical room with at least 15 square meters together with all necessary supplies to be sited in the Contractor's main area.

The Contractor shall provide the following minimum requirements :

LABOR

- | | | |
|---|-----|---------------------------|
| 1 | no. | Safety Engineer / Officer |
| 1 | no. | Nurse / Health Officer |

EQUIPMENT / MATERIALS

Personnel Protective Equipment

- | | | |
|----|------|--------------|
| 50 | pcs. | Hard Hats |
| 2 | pcs. | Gloves |
| 50 | pcs. | Goggles |
| 2 | pcs. | Aprons |
| 6 | pcs. | Safety Belts |
| 50 | pcs. | Safety Shoes |
| 6 | pcs. | Life Lines |

Safety Devices

- | | | |
|---|------|-------------------|
| 1 | lot | Barricades |
| 1 | lot | Warning signs |
| 2 | unit | Fire extinguisher |

Medical and First Aid System - For twelve (12) mos.

NOTE :

The Contractor shall provide the above-cited minimum construction safety and health requirements or as required by the Engineer.

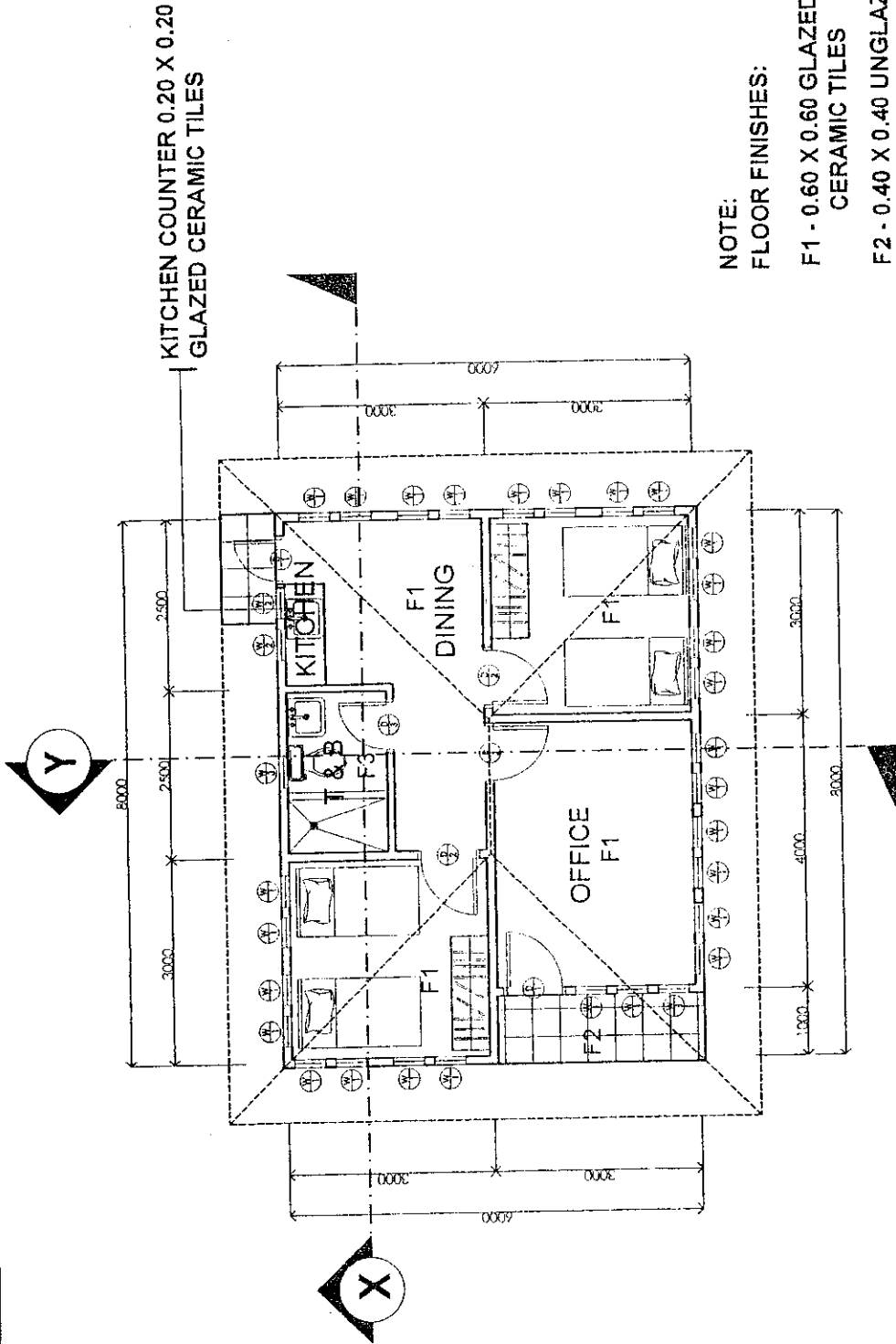
**MINIMUM TESTING REQUIREMENTS OF CONSTRUCTION MATERIALS
FOR THE CONSTRUCTION OF BACK-UP AREA
PORT OF LIPATA, LIPATA, ANTIQUE**

Materials / Work Items	Required Tests	Minimum Incremental Frequency of Tests
Cement	Physical and Chemical (ASTM C-150)	For every 2,000 bags or fraction thereof
Fine Aggregate (Sand)	Quality Test for : Grading, Elutriation (wash), Bulk Specific Gravity, Absorption, Mortar Strength, Soundness, Organic Impurities, Unit Weight, % Clay Lumps and Shale	For every 1,500 cubic meter or fraction thereof
Coarse Aggregate (Crushed Gravel)	Quality Test for : Grading, Bulk Specific Gravity, Absorption, Abrasion, Soundness and Unit Weight	For every 1,500 cubic meter or fraction thereof
Water	Certificate from the Engineer or Quality Test for Density and Chloride Content, if the source is questionable	One for every source
Admixture (optional)	Compressive strength and slump test	4 specimens for every 50 cubic meter or fraction thereof
Deformed Bars	Test for Chemical Composition and Mechanical Properties	For every 10,000 kg. or fraction thereof
Reinforced Concrete	Compressive Strength	4 specimens for every 50 cubic meter or fraction thereof, or for each day of concreting
Selected Fill	Field Density Test (FDT) Grading Test Plasticity Test (LIL, PL, PI) Laboratory Compaction Test	For every 500 square meter of each layer of compacted fill or fraction thereof For every 1,500 cubic meter or fraction thereof
Sand and Gravel Fill	Test for organic impurities and Grading	For every 1,500 cubic meter or fraction thereof

Crushed Aggregate Base Course	Grading Test Plasticity Test (LIL, PL, PI)	For every 300 cubic meter or fraction thereof
	Laboratory Compaction Test Quality Test (Grading, Abrasion and Plasticity)	For every 1,500 sq.m or fraction thereof
	California Bearing Ratio (CBR)	For every 2,500 sq.m or fraction thereof
	Field Density Test (FDT)	For every 500 square meter of each layer of compacted fill or fraction thereof
Aggregates for CTB	Test for Soundness, Abrasion, Sodium Sulfate and Grading	For every 1,500 cubic meter or fraction thereof
Cement Treated Base	Field Density Test	For every 500 sq.m or fraction thereof
Interlocking Concrete Blocks	Compressive Strength	4 specimens for every 50 cubic meter or fraction thereof, or for each day of concreting
Joint Filler	Inspection and Evaluation Report from the Engineer	One per item
High Tension Strands	Mechanical Properties and Chemical Composition	For every 10,000 kg. or fraction thereof
Rocks	Test for Apparent Specific Gravity and Abrasion	For every 1,500 cubic meter or fraction thereof
Geotextile Filter	Physical and Mechanical Test Mill Certificate for Hydraulic Properties containing the Effective Opening Size and Water Permeability	One per item
Electrical Fixtures/Devices/Pole Wires/Cables/Conduits	Inspection and Evaluation Report from the Engineer Testing and Commissioning	One per item

NOTE :

1. Refer to applicable Testing Standards.
2. Other laboratory tests and related necessary works to ensure the good quality of the project shall be undertaken as required by the Engineer.



NOTE:
FLOOR FINISHES:

- F1 - 0.60 X 0.60 GLAZED CERAMIC TILES
- F2 - 0.40 X 0.40 UNGLAZED CERAMIC TILES
- F3 - 0.20 X 0.20 UNGLAZED CERAMIC TILES

FLOOR PLAN

NOT TO SCALE

SCALE: AS SHOWN
SHEET NO. A1
DATE:

SHEET CONTENTS:
AS SHOWN

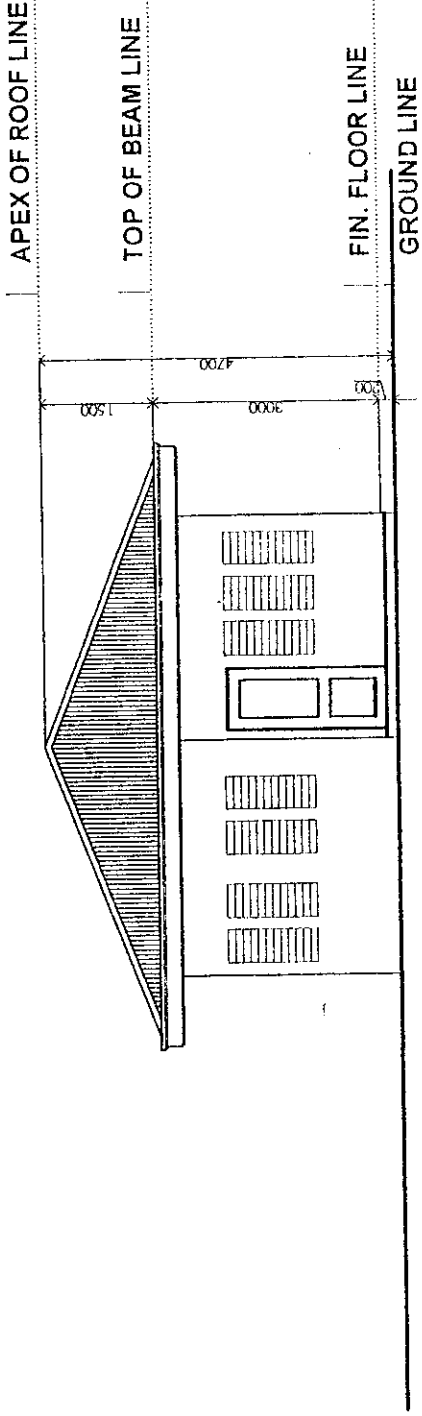
APPROVED BY:
[Signature]
DOMAS B. CARLOS
Asst. Gen. Manager - EO

RECOMMENDED BY:
[Signature]
ROMELO T. MASCARIÑA
Manager, Project Dev. Dept.

PROJECT TITLE: STANDARD FIELD OFFICE

Drawn by: M.V. Collis Sr. Architect
Checked by: M.V. Esquerro Principal Architect
Reviewed by: J.G. Pallang Acta. Div. Manager-DED





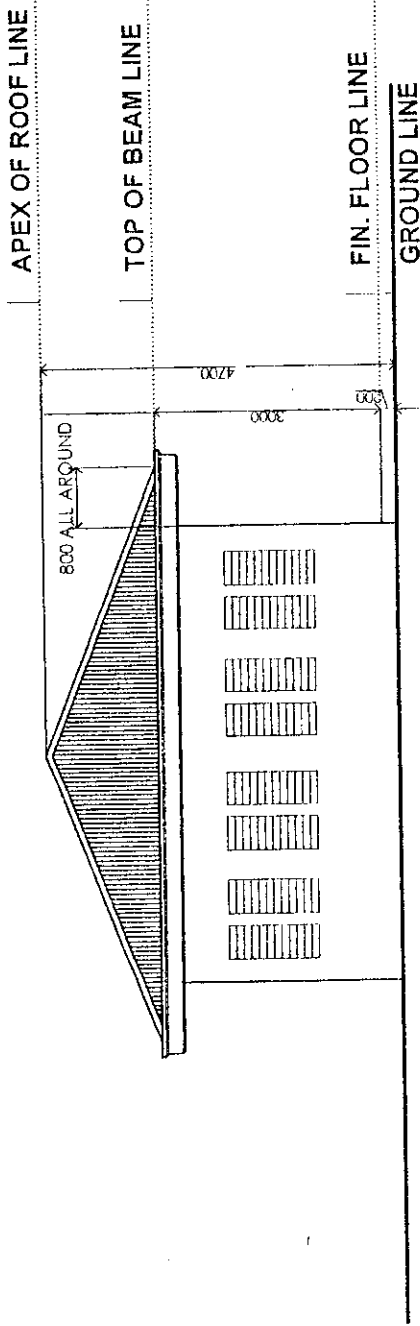
NOTE:
 EXTERIOR & INTERIOR WALL FINISHES:
 - PAINT ON SMOOTH CEMENT PLASTER

FRONT ELEVATION

NOT TO SCALE



PROJECT TITLE		STANDARD FIELD OFFICE		SHEET CONTENTS: *AS SHOWN		SCALE: AS SHOWN
Drawn by: M.V. Collis	Checked by: M.V. Esquerro	Reviewed by: J.C. Poling	RECOMMENDED BY: ROMELO T. MASCARINA Manager, Project Dev. Dept.	APPROVED:	SHEET NO. A2	DATE



NOTE:
 EXTERIOR & INTERIOR WALL FINISHES:
 - PAINT ON SMOOTH CEMENT PLASTER

REAR ELEVATION

NOT TO SCALE



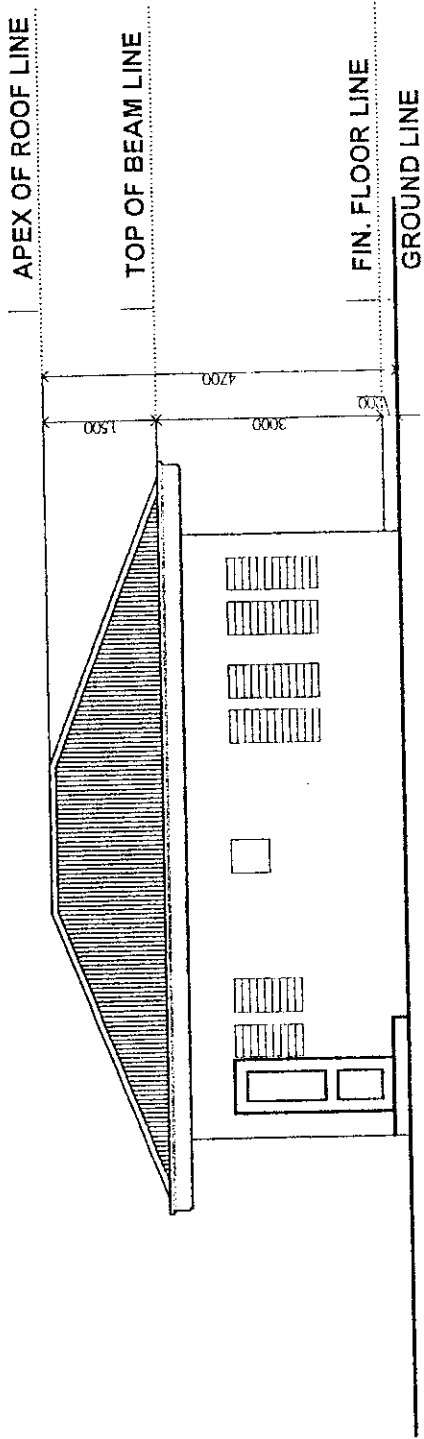
PROJECT TITLE: STANDARD FIELD OFFICE

Drawn by: M.V. Coils
 Checked by: M.V. Esquerro
 Reviewed by: J.C. Fajines

Recommended By: ROMELO T. MASCARINA
 Manager, Project Dev. Dept.

APPROVED: *[Signature]*
 TOMAS B. CARLOS
 Asst. Gen. Manager - EO

SHEET CONTENTS: #AS SHOWN
 SCALE: AS SHOWN
 SHEET NO. A3
 DATE:



NOTE:
 EXTERIOR & INTERIOR WALL FINISHES:
 - PAINT ON SMOOTH CEMENT PLASTER

LEFT SIDE ELEVATION

NOT TO SCALE



PHILIPPINE PORTS
 AUTHORITY

PROJECT TITLE

STANDARD FIELD OFFICE

SHEET CONTENTS:
 * AS SHOWN

SCALE:
 AS SHOWN

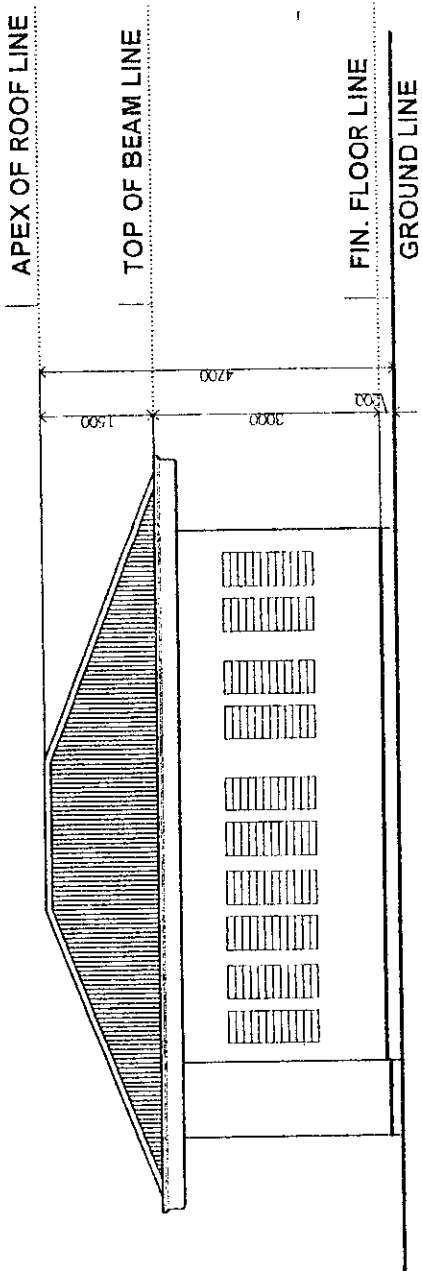
SHEET NO.
 A4

DATE:

Drawn by: M.V. Colla
 Checked by: M.V. Esquivito
 Reviewed by: J.C. Polinggo

RECOMMENDED BY:
 Sr. Architect
 Principal Architect
 Actg. Chief Design Sec.
 Actg. Div. Manager - DEO

APPROVED:
 TOMAS B. CARLOS
 Asst. Gen. Manager - EO



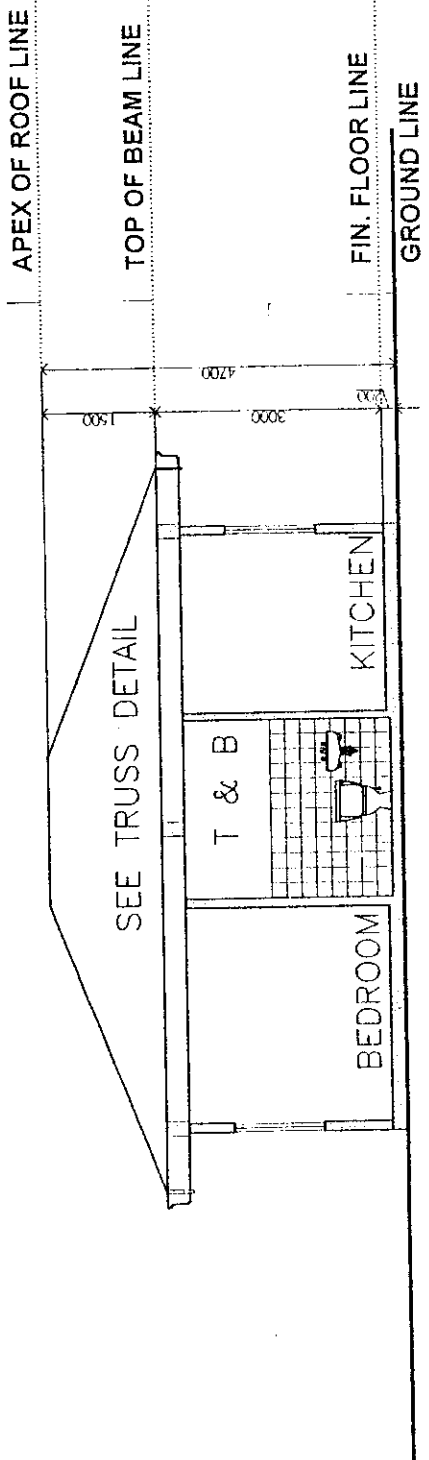
NOTE:
 EXTERIOR & INTERIOR WALL FINISHES:
 - PAINT ON SMOOTH CEMENT PLASTER

RIGHT SIDE ELEVATION

NOT TO SCALE



PROJECT TITLE		STANDARD FIELD OFFICE		SHEET CONTENTS: • AS SHOWN		SCALE: AS SHOWN
Drawn by: M.V. Celis	Sr. Architect	RECOMMENDED BY:	APPROVED:	SHEET NO. A5	DATE:	
Checked by: M.V. Esquerre	Principal Architect	ROCHELO T. MASCARINA	TOMAS B. CARLOS			
Reviewed by: J.C. Palinao	Actg. Chief Design Spec	Manager, Project Dev. Dept.	Asst. Gen. Manager - ED			



SECTION THRU X

NOT TO SCALE



PROJECT TITLE: STANDARD FIELD OFFICE

SCALE: AS SHOWN

SHEET NO. AG

DATE:

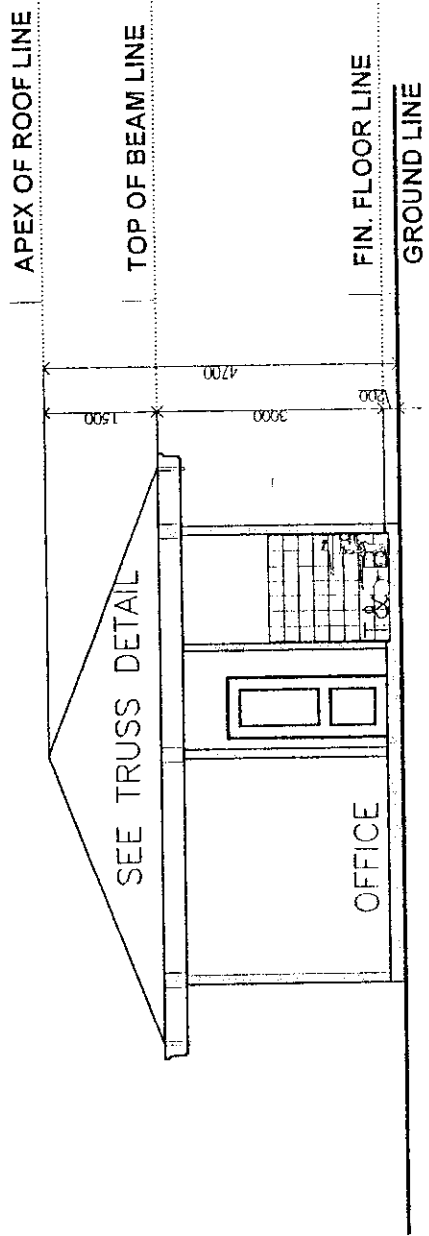
SHEET CONTENTS:
* AS SHOWN

Drawn by: M.V. Collis
Checked by: M.V. Esquerro
Reviewed by: J.C. Palinas

Sr. Architect
Principal Architect
Actg. Chief Design Sec.
Actg. Div. Manager-DEO

RECOMMENDED BY:
J.M. ROMELO T. MASCARINA
Manager, Project Dev. Dept.

APPROVED:
TOMAS B. CARLOS
Asst. Gen. Manager

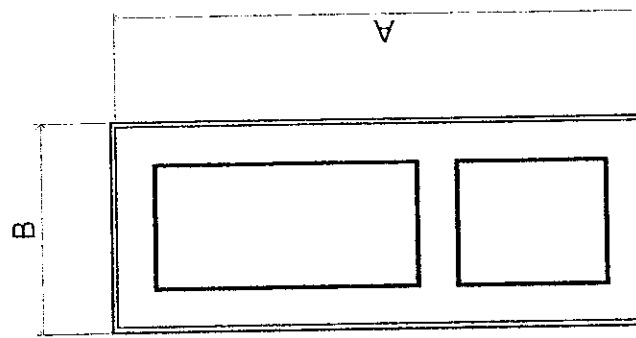


SECTION THRU Y

NOT TO SCALE



PROJECT TITLE: STANDARD FIELD OFFICE		SCALE: AS SHOWN SHEET NO. A7 DATE:
PROJECT TITLE: STANDARD FIELD OFFICE		SHEET CONTENTS: AS SHOWN
Drawn by: M.V. Collis Checked by: M.V. Esquerro Reviewed by: J.C. Palming	Recommended By: ROMELO T. MASCARISA Sr. Architect Principal Architect Actg. Chief Design Sec. Actg. Div. Manager - OED Manager, Project Dev. Dept.	APPROVED: <i>[Signature]</i> TOMAS B. CARLOS Asst. Gen. Manager - ED



SCHEDULE OF DOORS

MARK	A	B	QTY.	TYPE:
D1	2.10	0.90	2	PAINTED WOODEN PANEL DOOR
D2	2.10	0.80	3	PAINTED WOODEN PANEL DOOR
D3	2.10	0.70	1	HEAVY DUTY PVC. DOOR

SCHEDULE OF DOORS



PROJECT TITLE: STANDARD FIELD OFFICE

Drawn by: M.V. Collis Sr. Architect
 Checked by: M.V. Esquerro Principal Architect
 Reviewed by: C.H. Ormum Actg. Chf. Design Sec.
 J.C. Pollang Actg. Div. Manager-DEU

RECOMMENDED BY: ROMELO T. MASCARINA
 Manager, Project Dev. Dept.

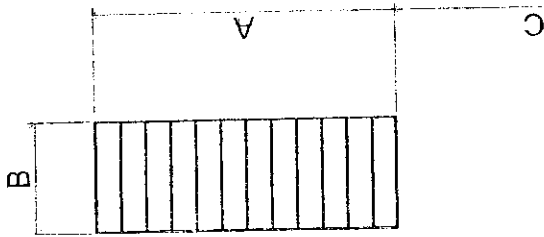
APPROVED: [Signature] THOMAS B. CARLOS
 Asst. Gen. Manager - ED

SHEET CONTENTS: AS SHOWN

SCALE: AS SHOWN

SHEET NO. A8

DATE:



SCHEDULE OF WINDOWS

MARK	A	B	C	QTY.	TYPE
W1	1.20	0.45	0.90	29	ALUMINUM FRAMED JALOUSIE WINDOWS
W2	0.90	0.45	1.20	2	ALUMINUM FRAMED JALOUSIE WINDOWS
W3	0.45	0.45	1.65	1	ALUMINUM FRAMED JALOUSIE WINDOWS

SCHEDULE OF WINDOWS



PROJECT TITLE

STANDARD FIELD OFFICE

SHEET CONTENTS:
AS SHOWN

SCALE: AS SHOWN
SHEET NO. A9
DATE:

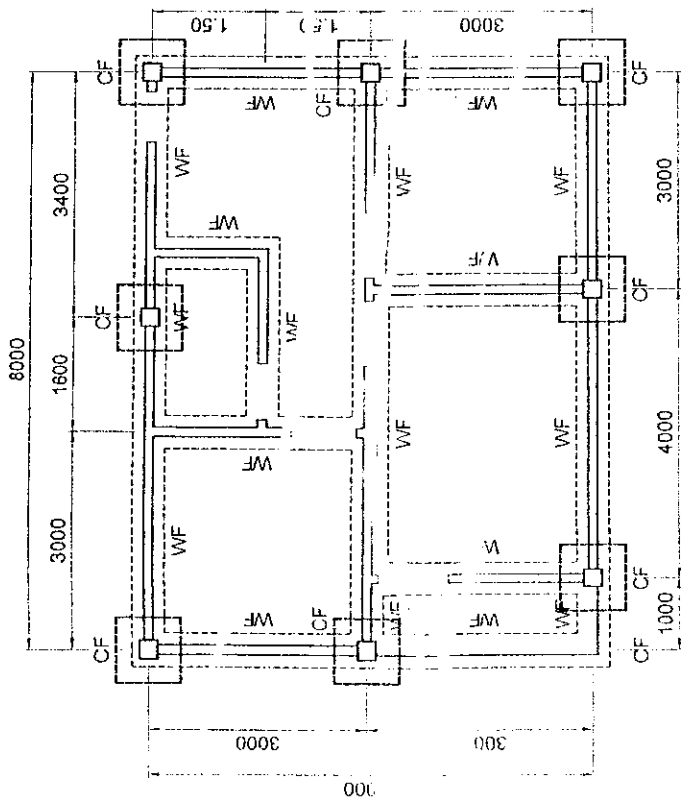
Drawn by: M.V. Coña
Checked by: M.V. Esquerra
Reviewed by: J.C. Palangga

Sr. Architect
Principal Architect
Actg. Chief Design Sec.
Actg. Div. Manager - DEP

RECOMMENDED BY:
ROMELO T. MASCARINA
Manager, Project Dev. Dept.

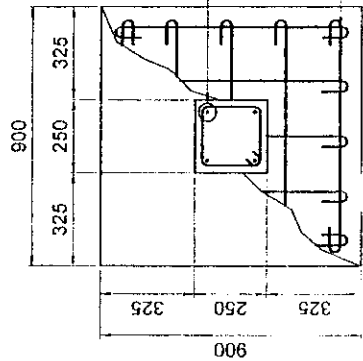
APPROVED:

[Signature]
TOMAS B. CARLOS
Asst. Gen. Manager - EO



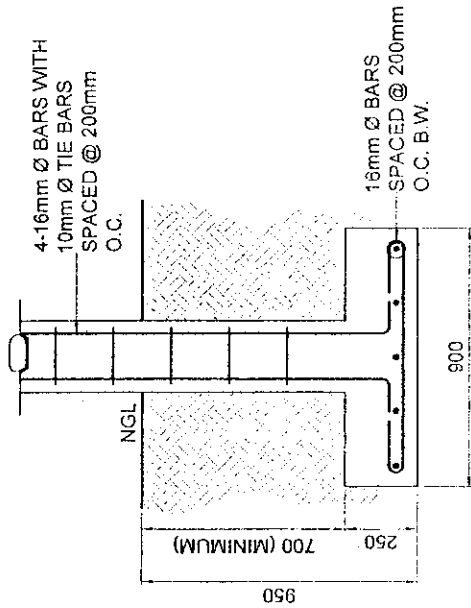
FOUNDATION PLAN
SCALE 1 : 100

100mm CHB WALL WITH 10mm Ø VERT. SPACED @ 600mm O.C. & HOR. BARS @ EVERY 3 LAYERS OF CHB

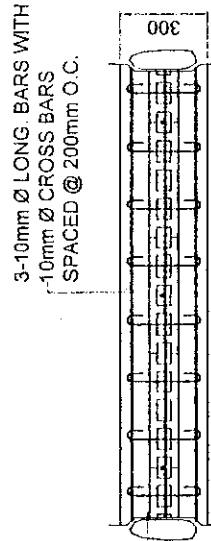


PLAN

CF DETAIL
SCALE 1 : 25

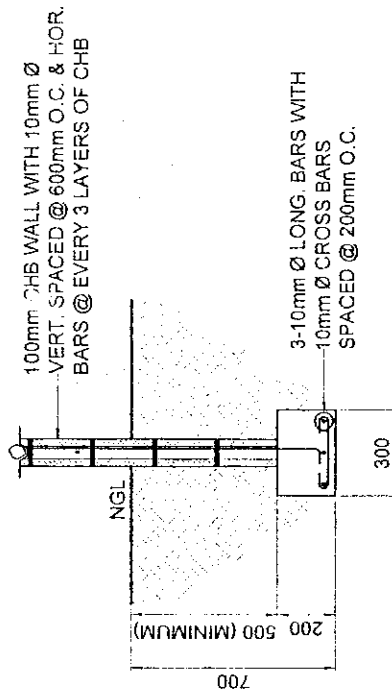


SECTION



PLAN

WF DETAIL
SCALE 1 : 25



SECTION

PROJECT TITLE

STANDARD FIELD OFFICE

SHEET CONTENTS:

SCALE: AS SHOWN



PHILIPPINE PORTS AUTHORITY

Designed & Drawn by: JM. B. Polanco, Port Engineer

Checked by: C.H. Ormum, Actg. Chief Design. Sec.

Reviewed by: J.C. Poling, Asst. Div. Manager - DED

RECOMMENDED BY:

ROMELO T. MASCARINA
Manager, Project Dev. Dept.

APPROVED:

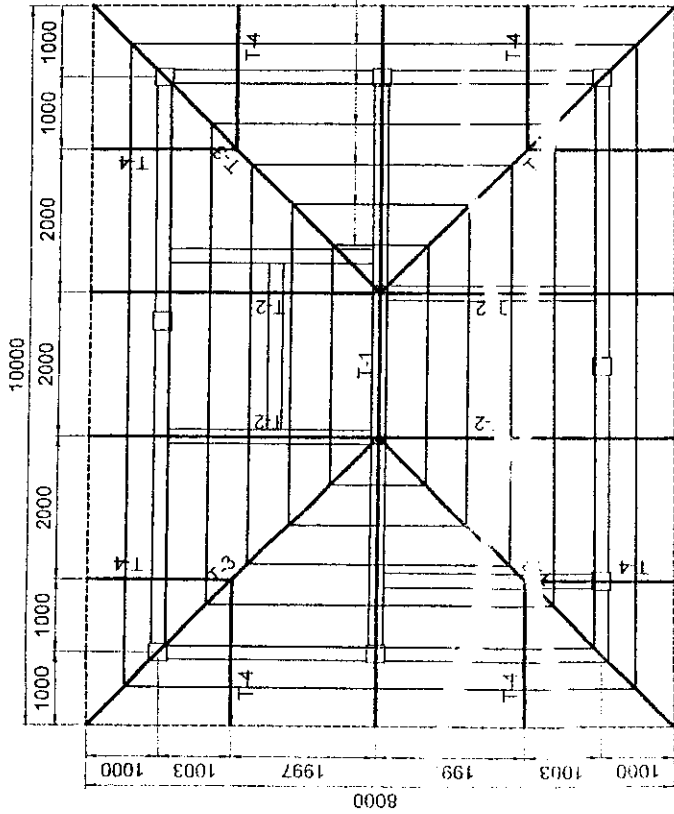
COMAS/B. CARLOS
Asst. Gen. Manager

[Signature]

DATE:

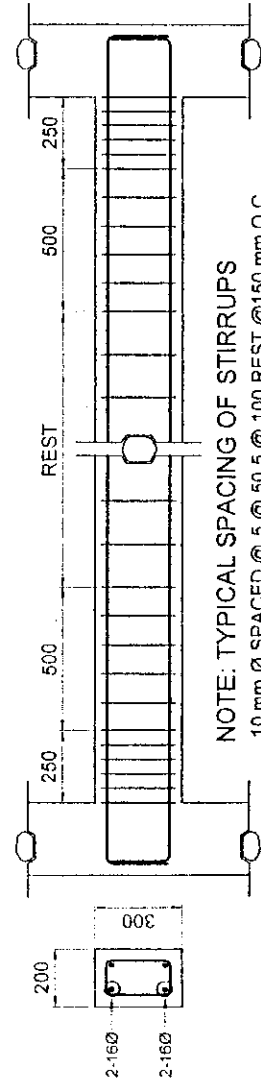
SHEET NO. S1

DATE:



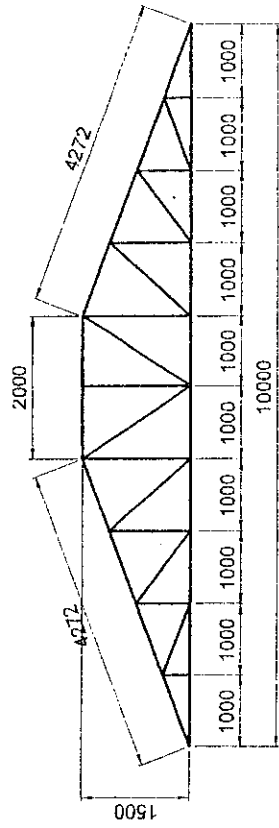
ROOF FRAMING PLAN

SCALE 1 : 100

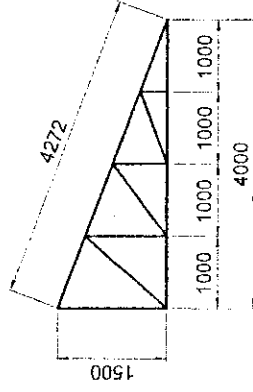


BEAM DETAIL

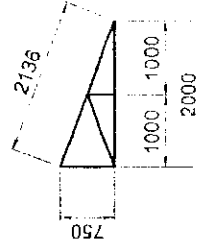
SCALE 1 : 25



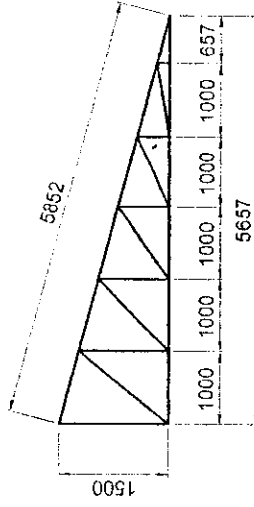
T-1



T-2



T-4



T-3

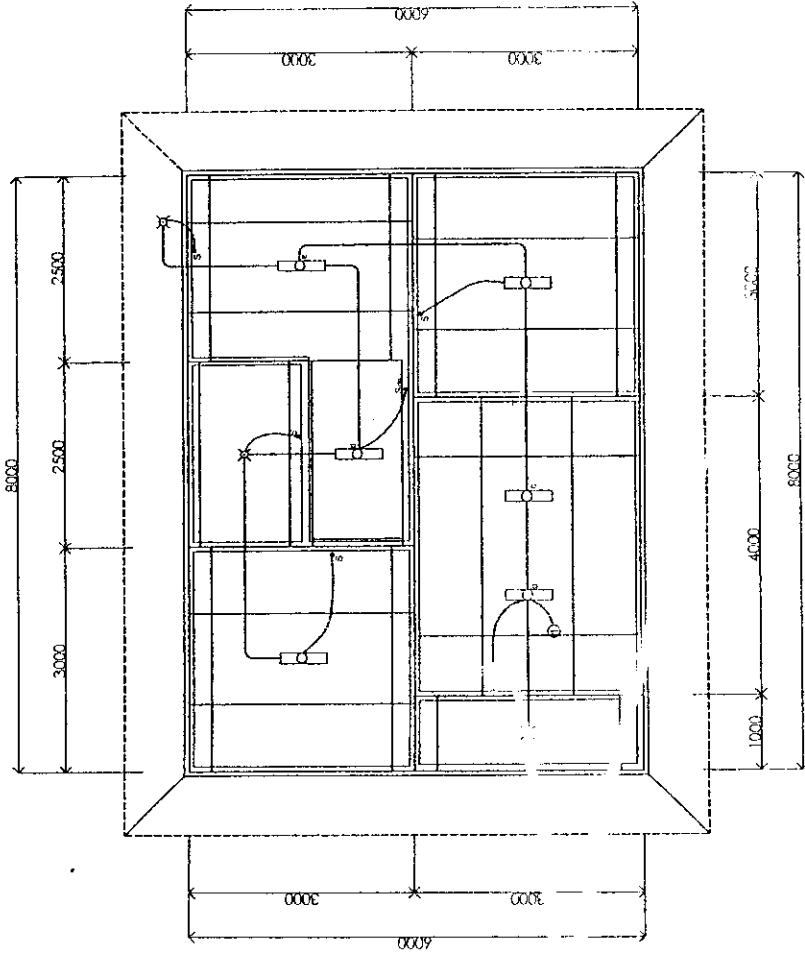
TRUSS MEMBERS:
= 2- 38mm x 38mm x 4.5mm ANGLE BARS

PURLINS:
= 50mm x 100mm @ 600mm O.C.

TRUSS DIAGRAM

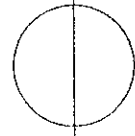
SCALE 1 : 100

		PROJECT TITLE: STANDARD FIELD OFFICE		SCALE: AS SHOWN
Designed & Drawn by: JM. B. Polanco, Port Engineer	Recommended By: ROMELO T. MASCARINA, Manager, Project Dev. Dept.	SHEET CONTENTS: AS SHOWN		SHEET NO. S2
Checked by: C.H. Ornum, Acta. Chief Design Sec.	Reviewed by: J.C. Palinao, Acta. Div. Manager-DEB	APPROVED:		DATE:

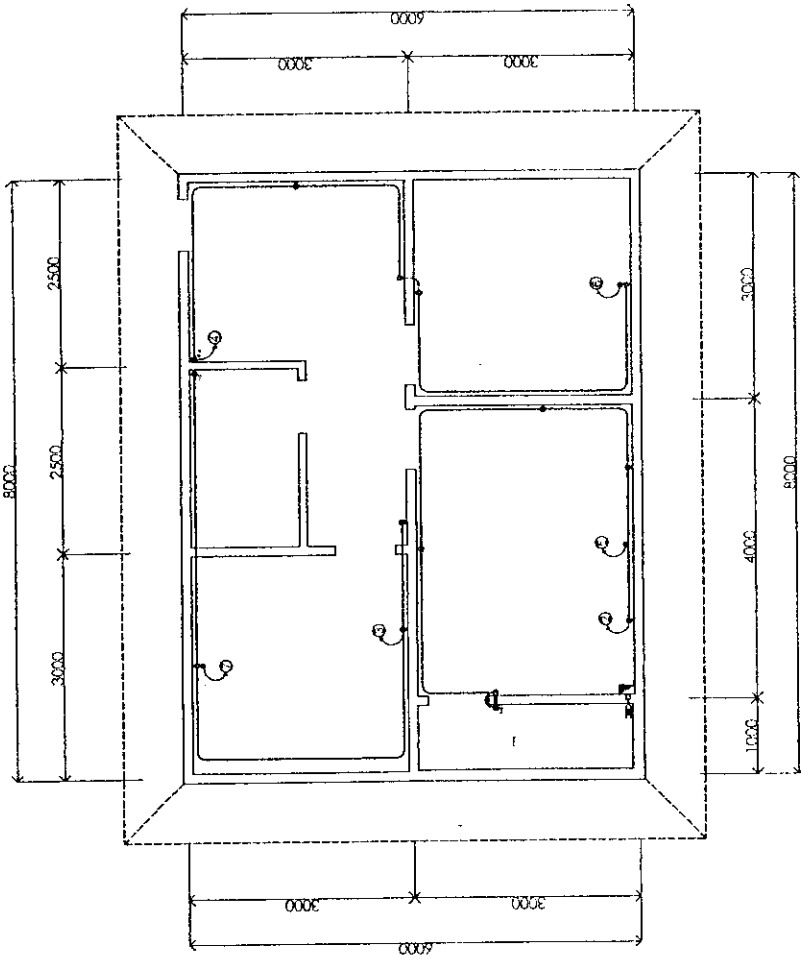


LIGHTING LAYOUT

NOT TO SCALE

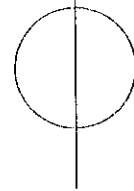


		PROJECT TITLE STANDARD FIELD OFFICE	SHEET CONTENTS: AS SHOWN	SCALE: AS SHOWN
Designed & Drawn by: A. Belen Checked by: C.H. Ormum Reviewed by: J.C. Pajina	Designer Supervising Engr. A Actg. Chief Design Sec. Actg. Div. Manager-DEO	RECOMMENDED BY: ROMEO T. MASCARINA Manager, Project Dev. Dept.	APPROVED: TOMAS G. CARLOS Asst. Gen. Manager - EO	SHEET NO. E1
			DATE:	



POWER LAYOUT

NOT TO SCALE



		PROJECT TITLE: STANDARD FIELD OFFICE	SHEET CONTENTS: AS SHOWN	SCALE: AS SHOWN
Designed & Drawn by: A. Belen Checked by: C.H. Ornum Reviewed by: J.C. Pajingo	Recommended By: ROMELO T. MASCARIÑA Manager, Project Dev. Dept.	Approved: TOMAS B. CARLOS Asst. Gen. Manager - EO	SHEET NO. E2	DATE

LOAD SCHEDULE

CKT. NO.	DESCRIPTION	VOLTS	AMPS.	CKT. PROTECTION	WIRES	CONDUIT
1	LIGHTING OUTLET	220	4.09	30AT, 2P, 220V	2-3.5mm sq. THW	20mmØ uPVC
2	CONVENIENCE OUTLET	220	4.91	30AT, 2P, 220V	2-3.5mm sq. THW	20mmØ uPVC
3	CONVENIENCE OUTLET	220	6.55	30AT, 2P, 220V	2-3.5mm sq. THW	20mmØ uPVC
4	REF. OUTLET	220	4.55	30AT, 2P, 220V	2-3.5mm sq. THW	20mmØ uPVC
5	1.0 HP. WACU	220	8.00	30AT, 2P, 220V	2-3.5mm sq. THW	20mmØ uPVC
6	1.0 HP. WACU	220	8.00	30AT, 2P, 220V	2-3.5mm sq. THW	20mmØ uPVC
7	1.0 HP. WACU	220	8.00	30AT, 2P, 220V	2-3.5mm sq. THW	20mmØ uPVC
8	SPARE	220				

MAIN : 50AT, 2P, 220V, 2-8mm sq. THW IN 20mmØ RSC

LEGEND & SYMBOL

	1-40W FLOURESCENT FIXTURE, BOX TYPE
	KEYLESS PORCELAIN RECEPTACLE WITH 100W BULB
	ONE GANG SWITCH
	TWO GANG SWITCH
	THREE GANG SWITCH
	DUPLEX CONVENIENCE OUTLET
	DUPLEX CONVENIENCE OUTLET BUT WEATHER PROOF TYPE
	REF. OUTLET
	AIRCON OUTLET
	PANEL BOARD



PROJECT TITLE

STANDARD FIELD OFFICE

SCALE: AS SHOWN
SHEET NO. E3
DATE:

Designed & Drawn by: A. Belen
Checked by: C.H. Ornum
Reviewed by: J.C. Polidog

Supervising Engr. P.
Actg. Chief Design Sec.
Asst. Div. Manager-DED

RECOMMENDED BY:
ROMELO T. MASCARIÑA
Manager, Project Dev. Dept.

APPROVED:
TOMAS B. CARLOS
Asst. Gen. Manager - EO

GENERAL NOTES:

- 1.0 ALL PLUMBING WORKS INCLUDED HEREIN SHALL BE EXECUTED IN ACCORDANCE TO THE PROVISIONS OF THE PHILIPPINE PLUMBING CODE, THE NATIONAL BUILDING CODE AND THE RULES AND REGULATIONS OF THE LOCAL MUNICIPALITY.
- 2.0 COORDINATE THE DRAWINGS WITH OTHER RELATED DRAWINGS & SPECIFICATIONS. THE ENGINEER AND THE ARCHITECT SHALL BE NOTIFIED IMMEDIATELY OF ANY DISCREPANCY FOUND HEREIN.
- 3.0 ALL PIPES SHALL BE INSTALLED AS INDICATED. ANY RELOCATION REQUIRED FOR PROPER EXECUTION OF THE PLUMBING WORK SHALL BE WITH PRIOR APPROVAL OF THE ENGINEER AND THE ARCHITECT.
- 4.0 PROPOSED SANITARY UTILITIES SHALL CONFORM TO THE ACTUAL LOCATION, DEPTH AND INVERT ELEVATION OF ALL EXISTING PIPES AND STRUCTURES AS VERIFIED BY THE CONTRACTOR.
- 5.0 ALL SLOPES AND HORIZONTAL DRAINAGE SHALL MAINTAIN ONE PERCENT (0.01) AND ONE-HALF PERCENT (0.005) MINIMUM UNLESS OTHERWISE SPECIFIED.
- 6.0 WATER SUPPLY PIPE TO FIXTURE SHALL BE SIZED IN ACCORDANCE WITH THE MANUFACTURER'S RECOMMENDATIONS.
- 7.0 ALL BRANCHES OF FIXTURES OR GROUP OF FIXTURES SHALL BE PROVIDED WITH AIR CHAMBER MADE OF CAPPED VERTICAL EXTENSION PIPE.
- 8.0 ALL WATER LINES SHALL BE HYDROSTATICALLY TESTED @ 100 PSI FOR A PERIOD OF TWO (2) HOURS BEFORE BURIED OR COVERED.
- 9.0 THE CONTRACTOR SHALL VERIFY ALL EXISTING UTILITIES AT SITE & COORDINATE THE WORK WITH THE SEWER AND STORM DRAINAGE LINE EFFLUENT DISPOSAL POINT AND WATERLINE SERVICE CONNECTING/TAPPING POINT.
- 10.0 ALL PIPE SIZES AND OTHER DIMENSIONS ARE IN MILLIMETER (MM) UNLESS OTHERWISE SPECIFIED.

LEGEND & SYMBOL

VSTR	VENT STACK PIPE THRU ROOF
HB	HOSE BIBB
CO	CLEAN OUT FERRULE
KS	KITCHEN SINK
GIP	GALVANIZED WROUGHT IRON PIPE
LAV	LAVATORY
SHO	SHOWER HEAD
ACC	AIR CAP CHAMBER
SSP	SOIL STACK PIPE
PVC	POLYVINYL CHLORIDE
CP	CONCRETE PIPE
FCO	FLOOR CLEAN OUT
DS	DOWN SPOUT
FD	FLOOR DRAIN
WC	WATER CLOSET
VTR	VENT PIPE THRU ROOF
FAU	G.I. FAUCET
UPVC	UNPLASTICIZED POLYVINYL CHLORIDE
PERF	PERFORATED
WCO	WALL CLEAN OUT
CB	CATCH BASIN
BV	BALL VALVE

PROJECT TITLE

STANDARD FIELD OFFICE

SHEET CONTENTS:
AS SHOWN

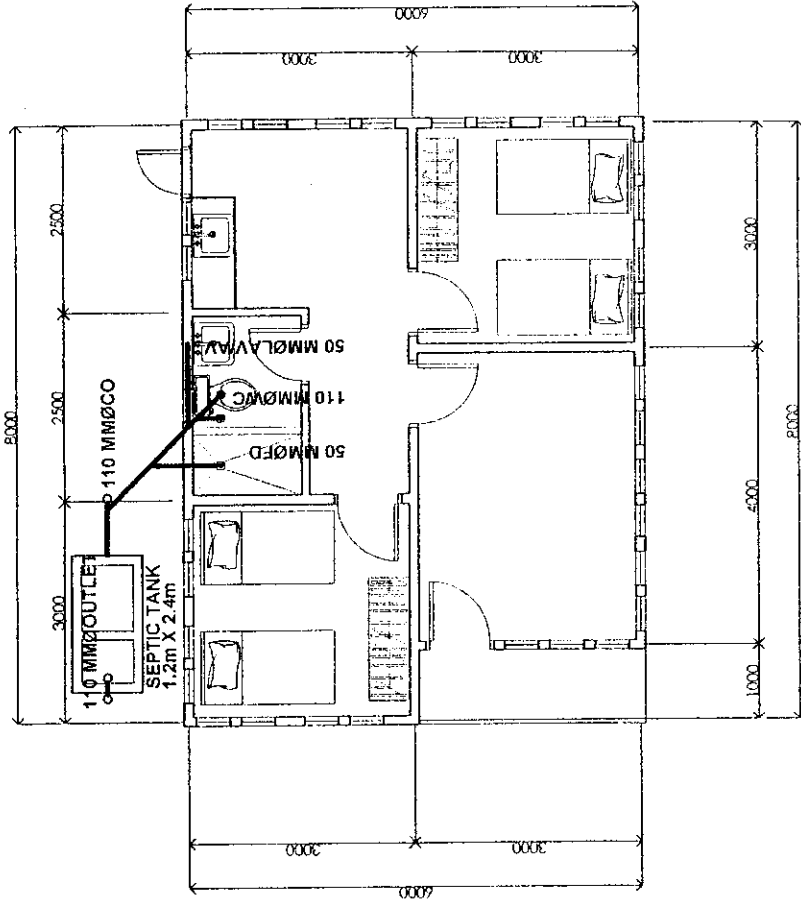
SCALE
AS SHOWN
SHEET NO.
P 1
DATE



Drawn by: M.V. Colla Sr. Architect
Checked by: M.V. Esquerro Principal Architect
C.H. Cirum Asst. Chief Design Eng.
Reviewed by: J.C. Polingo Asst. Div. Manager-DEO


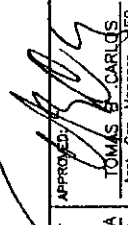
RECOMMENDED BY:
ROMELO T. MASCARINA
Manager, Project Dev. Dept.

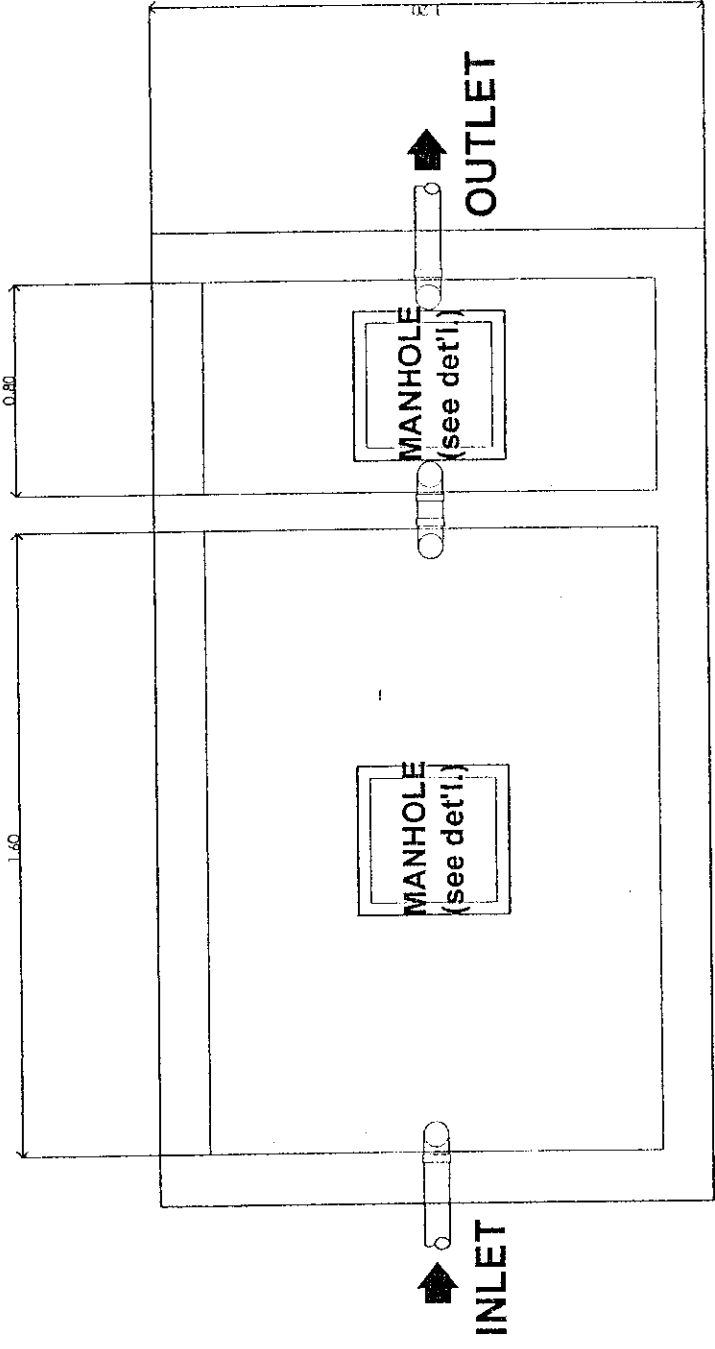
APPROVED:
TOMAS B. CARLDS
Asst. Gen. Manager, J. EO



SEWER LAYOUT

NOT TO SCALE

	PROJECT TITLE: STANDARD FIELD OFFICE	SHEET CONTENTS: • AS SHOWN	SCALE: AS SHOWN
	Drawn by: M.V. Coils Sr. Architect Checked by: M.V. Esquerro Principal Architect Reviewed by: J.C. Palinao Actg. Div. Manager - DED	RECOMMENDED BY: DOMELO T. MASCARINA Manager, Project Div. Dept.	APPROVED:  TOMAS B. CARLOS Asst. Gen. Manager - ED



DETAIL PLAN

NOT TO SCALE



PROJECT TITLE

STANDARD FIELD OFFICE

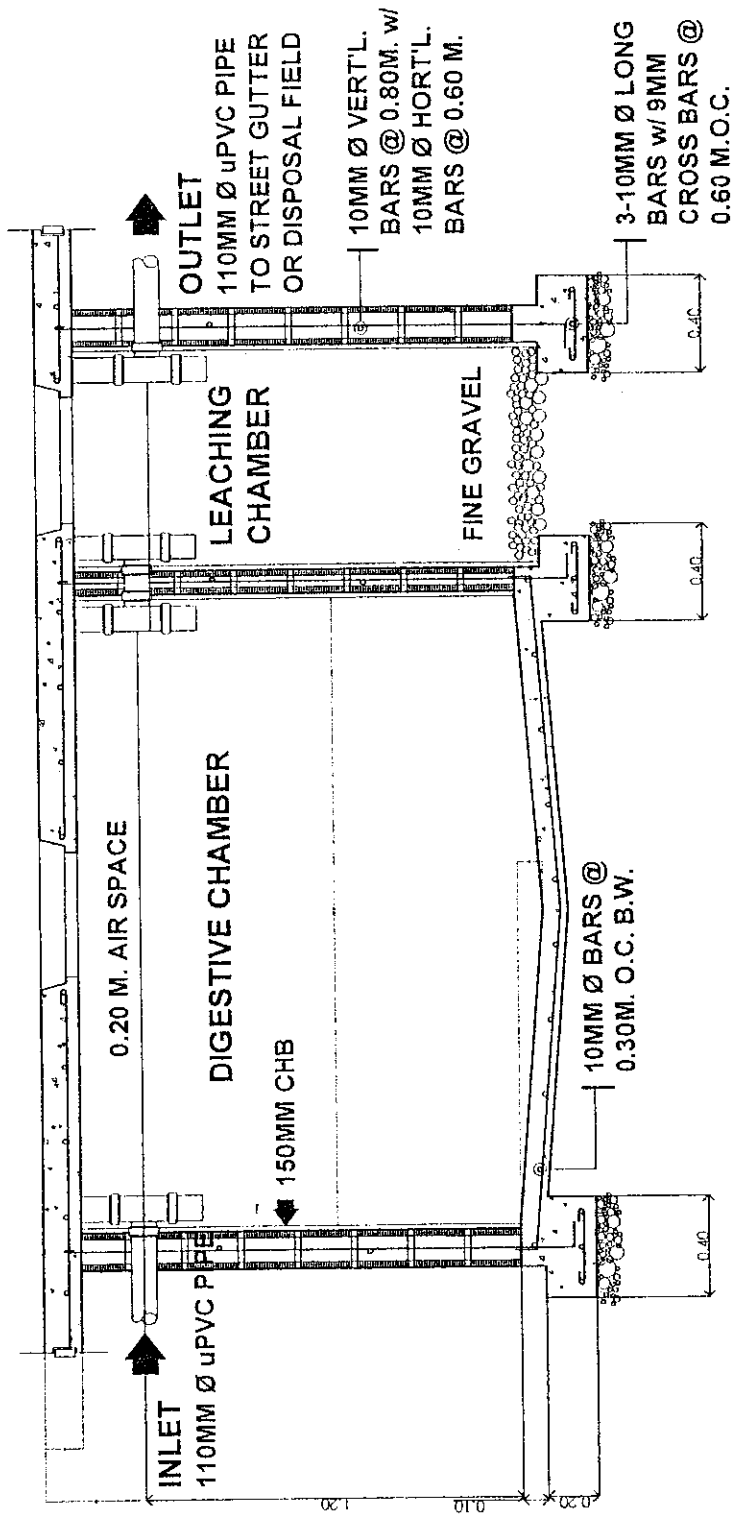
SHEET CONTENTS:
• AS SHOWN

SCALE: AS SHOWN
SHEET NO. P4
DATE:

Drawn by: M.V. Colla Sr. Architect
Checked by: M.V. Esquerro Principal Architect
Reviewed by: J.C. Poling Actg. Div. Manager-DED

RECOMMENDED BY:
ROMELO T. MASCARINA
Manager, Project Dev. Dept.

APPROVED
TOMAS CARLOS
Asst. Gen. Manager-EO



SEPTIC TANK DETAIL SECTION

NOT TO SCALE



PROJECT TITLE: STANDARD FIELD OFFICE		SCALE: AS SHOWN SHEET NO. P5 DATE:
Drawn by: M.V. Collis Checked by: M.V. Esquerro Reviewed by: J.C. Pajonaga	Recommended By: ROMELO T. MASCARINA Sr. Architect Actg. Chief Design Sec Manager, Project Dev. Dept.	Approved: TOMAS B. CARLOS Asst. Gen. Manager - EO
SHEET CONTENTS: * AS SHOWN		

SECTION IX
BIDDING FORMS

BID FORM

Date: _____
ITB No. 018 – 2011

To: **Philippine Ports Authority**
Bonifacio Drive, South Harbor,
Port Area, Manila

We, the undersigned, declare that:

- a. We have examined and have no reservation to the Bidding Documents, including Addenda, for the Contract for the **Construction of Back-up Area, Port of Lipata, Lipata, Antique**;
- b. We offer to execute the Works for this Contract in accordance with the Bid and Bid Data Sheet, General and Special Conditions of Contract accompanying this Bid;

The total price of our Bid, excluding any discounts offered in item (d) below is:

BILL NO	DESCRIPTION	TOTAL AMOUNT
1	General Expenses	P
2	Proposed Reclamation	
3	Port Lighting System	
4	Reimbursable Items	
	TOTAL AMOUNT OF BID (including VAT)	P

The discounts offered and the methodology for their application are: [insert information];

- c. Our Bid shall be valid for a period of 120 Calendar days from the date fixed for the Bid submission deadline in accordance with the Bidding Documents, and it shall remain binding upon us and may be accepted at any time before the expiration of that period;
- d. If our Bid is accepted, we commit to obtain a Performance Security in the amount of [insert percentage amount] percent of the Contract Price for the due performance of the Contract;
- e. Our firm, including any subcontractors or suppliers for any part of the Contract, have nationalities from the following eligible countries: [insert information];
- f. We are not participating, as Bidders, in more than one Bid in this bidding process, other than alternative offers in accordance with the Bidding Documents;
- g. Our firm, its affiliates or subsidiaries, including any subcontractors or suppliers for any part of the Contract, has not been declared ineligible by the Funding Source;

- h. We understand that this Bid, together with your written acceptance thereof included in your notification of award, shall constitute a binding contract between us, until a formal Contract is prepared and executed; and
- i. We understand that you are not bound to accept the Lowest Evaluated Bid or any other Bid that you may receive.

Name: _____

In the capacity of: _____

Signed: _____

Duly authorized to sign the Bid for and on behalf of: _____

Date: _____

**STATEMENT OF ALL COMPLETED AND ON-GOING GOVERNMENT AND PRIVATE CONSTRUCTION CONTRACTS,
INCLUDING CONTRACTS AWARDED BUT NOT YET STARTED, WHETHER SIMILAR OR NOT SIMILAR IN NATURE**

Name of the Contract or Title Of the Project 1]	Owner's Name and Address	Nature/ Scope of Work 2]	Contractor's Role (in percentage) 3]	Total Contract Value At		Date of Award 5]	Value of Outstanding Works	Estimated Time of Completion	% of Accomplishment		Contract Duration 5]	
				Award	Project Completion Date				Escalated Value to Present Prices 4]	Planned	Actual	Start
A) Government Contracts i. Completed ii. On-going iii. Awarded but not yet started B) Private Contracts i. Completed ii. On-going iii. Awarded but not yet started												

NOTE :

- 1] As appearing or defined in the contract entered/executed by the parties
- 2] With special reference to the Scope of Works as described/enumerated in the advertised Invitation To Bid.
- 3] Indicate whether as Sole Contractor, Sub-Contractor or Member in a Joint Venture / Consortium
- 4] Indicate the FOREX used if Contract Value is expressed in a currency other than the Philippine Peso. Specify the "Escalation Factor" used to escalate the Contract Value from completion date to the advertisement date of the Invitation to Bid per section 23.1.1.2 (3) of R.A. 9184.
- 5] State Month and Year.

Name of Firm/Applicant

Authorized Signing Official

Date

EXPERIENCE RECORD ON SIMILARLY COMPLETED PROJECTS

List of similarly completed projects within a period of ten (10) years from the date of submission and receipt of bids, with at least one (1) contract that is similar to contract to be bid and whose value, adjusted to current prices using the NSO consumer price indices, must be at least fifty percent (50%) of the ABC to be bid.

(To be Filled-up by the Contractor/Applicant)							
Major Operations of Work	Unit of Measure	Quantity	Similar Major Operations of Works			Unit of Measure	Quantity
			Title of the Project	Title of the Project	Title of the Project		
1. Off-shore Driving of Sheet Pile	l.m	595					
2. Reinforced Concrete Works	cu.m	120					
3. Rock Works							
a. 50 – 100 kg./pc.	cu.m	640					
b. 1,000 kg./pc.	cu.m	230					
4. Reclamation Works (fill materials)	cu.m	3,265					
5. Interlocking Concrete Blocks Pavement	sq.m	910					

NOTE: 1] Submit the Certificate of Completion/Certificate of Acceptance by the project owner, Final Recapitulation/Bill of Quantities and/or Constructor Performance Evaluation System (CPES) ratings, 1st, 2nd & Final visit (if applicable). Projects with no Certificate of Completion/Acceptance and Recapitulation/Bill of Quantities shall not be considered.

Name of Firm/Applicant

Authorized Signing Official

Date

FINANCIAL DATA

- A. Summary of the Applicant Firm's/Contractor's assets and liabilities on the basis of the attached audited financial statements, stamped "RECEIVED" by the Bureau of Internal Revenue or BIR authorized collecting agent, for the immediately preceding calendar year which should not be earlier than two (2) years from the date of bid submission.

	Year
1. Total Assets	
2. Current Assets	
3. Total Liabilities	
4. Current Liabilities	
5. Net worth (1-3)	
6. Net Working Capital (2-4)	

- B. The Net Financial Contracting Capacity (NFCC) must be at least equal to the approved budget for the contract to be bid.

NFCC = K (current asset - current liabilities) minus value of all outstanding or uncompleted portions of the projects under ongoing contracts, including awarded contracts yet to be started coinciding with the contract to be bid.

Where :

K = 10 for a contract duration of one year or less, 15 for more than one year up to two years and 20 for a contract duration of more than two years

NFCC = _____

- C. Or a commitment from a Universal or Commercial Bank to extend a credit line in favor of the prospective bidder to be bid which must be at least equal to ten (10%) percent of the approved budget for the contract to be bid.

Attached herewith are certified true copies of the audited financial statements stamped received by the BIR or BIR authorized collecting agent for the latest/immediately preceding calendar year.

Name of Firm/Applicant

Authorized Signing Official

Date: _____

NOTES:

If Partnership or Joint Venture, each Partner or Member Firm of Joint venture shall submit separate financial statements.

LIST OF CONTRACTOR'S PERSONNEL

I hereby declare that the following key personnel enumerated below, with attached resume/bio-data, including valid PRC License, for the various positions/functions, namely: Project Manager, Project Engineer, Materials Engineer, Construction Safety and Health Officer, and Foreman are available for the project applied for:

Position of Key Personnel	Name	No. of Key Personnel	Similar Experience in the Position (Years) ¹⁾	Total Experience in the Position (Years)	Attachment(s)	Annex(es)
Project Manager					PRC License (CE Preferred) Complete Qualification and Experience Data Certificate of Commitment	Annex " _ "
Project Engineer					PRC License (CE Preferred) Complete Qualification and Experience Data Certificate of Commitment	Annex " _ "
Materials Engineer					PRC License (CE Preferred) Submit Valid and Renewed DPWH Certificate of Accreditation Complete Qualification and Experience Data Certificate of Commitment	Annex " _ "
Construction Safety and Health Officer					Certificate of Safety and Health Construction Related Course Issued by DOLE Accredited Trainings Complete Qualification and Experience Data Certificate of Commitment	Annex " _ "
Foreman					Complete Qualification and Experience Data Certificate of Commitment	Annex " _ "
Other Position(s)					Complete Qualification and Experience Data Certificate of Commitment	Annex " _ "

NOTE: 1. Minimum qualification requirements: (work experience is similar in nature and complexity to the project to be bidden-out)

- Project Manager - Five (5) years
- Project Engineer - Three (3) years
- Foreman - Five (5) years
- Materials Engineer - One (1) year
- Materials Engineer I - for projects costing up to 100M
- Materials Engineer II - for projects costing more than 100M

Name of Firm/Applicant _____

Authorized Signing Official _____

Date _____

LIST OF CONTRACTOR'S EQUIPMENT UNITS

I hereby declare that the following equipment listed below which are owned, leased or under purchase agreement are in good operating condition and are available for the duration of the project:

DESCRIPTION (Type, Model, Make)	No. of Unit(s)	Capacity Output 2]	Owned, Leased and/or under purchase agreement 1]	Submitted Proof of Ownership/Leased/ Purchase Agreement (Mark as Annex "A.....Z")	OTHER INFORMATIONS (As Applicable)				
					Manufacturer	Engine Serial No.	Chassis No./ Name of Vessel	Location	Status

1] Indicate if owned or leased as listed in the Checklist/Bidding Documents. For owned equipment, as required, submit proof of ownership (i.e. deed of sale, sales invoice, official receipt). For Water Truck, Dump Truck and Transit Mixer submit LTO Certificate of Registration and valid Official Receipt. For owned barge/tugboat, submit Marina Certificate of Ownership and valid Cargo Ship Safety Certificate. For newly purchased barge/tugboat, submit Deed of Sale together with an application for Marina Certificate of Ownership duly received/authenticated by Marina with corresponding valid Cargo Ship Safety Certificate. For leased equipment, submit duly notarized copy of lease contract together with a copy of the Marina Owner's (Lessor's) Certificate and valid Cargo Ship Safety Certificate.

2] The unit of each equipment shall be as indicated in the Checklist/Bidding Documents, i.e GW (for crane barge), DWT (for deck barge and hopper barge), TON (for crane, road roller and drop hammer), kg.-m/blow (for diesel hammer), cu.m (for dump truck), hp. (for tugboat, road grader, bulldozer and concrete vibrator), cfm (for compressor), gal. (for water truck with pump), amp. (for welding machine), bagger (for concrete mixer).

Name of Firm/Applicant _____ Date _____
Authorized Signing Official _____

OMNIBUS SWORN STATEMENT FOR SOLE PROPRIETORSHIP

REPUBLIC OF THE PHILIPPINES)
CITY OF _____)SS

AFFIDAVIT

I (Name), of legal age, (Civil Status), (Nationality), and residing at (Address), after having been duly sworn in accordance with law, do hereby depose and state that:

1. I am the sole proprietor of (Name of Bidder) with office address at _____:
2. As the owner and sole proprietor of (Name of Bidder), I have full power and authority to do, execute and perform any and all acts necessary to represent it in the bidding for (Name of Project) of the Philippine Ports Authority;
3. (Name of Bidder) is not "blacklisted" or barred from bidding by the Government of the Philippines or any of its agencies, offices, corporations, or Local Government Units, foreign government / foreign or international financing institution whose blacklisting rules have been recognized by the Government Procurement Policy Board;
4. Each of the documents submitted in satisfaction of the bidding requirements is an authentic copy of the original, complete, and all statements and information provided therein are true and correct;
5. (Name of Bidder) is authorizing the PPA General Manager or its duly authorized representative(s) to verify all the documents submitted;
6. I am not related to the PPA General Manager, members of the Bids and Awards Committee (BAC), the Technical Working Group, and the BAC Secretariat, the head of the Project Management office of the end – user unit, and the project consultants by consanguinity or affinity up to the third civil degree;
7. (Name of Bidder) complies with existing labor laws and standards; and
8. (Name of Bidder) is aware of and has undertaken the following responsibilities as a Bidder:
 - a) Carefully examine all of the Bidding Document;
 - b) Acknowledge all conditions, local or otherwise, affecting the implementation of the contract;
 - c) Made an estimate of the facilities available and needed for the contract to be bid, if any; and
 - d) Inquire or secure Supplemental / Bid Bulletin(s) issued for the Construction of Back-up Area, Port of Lipata, Lipata, Antique.

IN WITNESS WHEREOF, I have hereunto set my hand this _____ day of _____ 20
_____ at _____, Philippines.

Bidder's Representative / Authorized Signatory

SUBSCRIBED AND SWORN to before me this _____ day of _____ 20 _____ at
_____, Philippines.

Doc. No. _____;
Page No. _____;
Book No. _____;
Series of 2011

OMNIBUS SWORN STATEMENT FOR PARTNERSHIP OR COOPERATIVE

REPUBLIC OF THE PHILIPPINES)
CITY OF _____)SS

A F F I D A V I T

I (Name), of legal age, (Civil Status), (Nationality), and residing at (Address), after having been duly sworn in accordance with law, do hereby depose and state that:

1. I am the duly authorized and designated representative of (Name of Bidder) with office address at (Address);
2. I am granted full power and authority to do, execute and perform any and all acts necessary and / or to represent the (Name of Bidder) in the bidding as shown in the attached (Proof of Authorization e.g. duly notarized Secretary's Certificate);
3. (Name of Bidder) is not "blacklisted" or barred from bidding by the Government of the Philippines or any of its agencies, offices, corporations, or Local Government Units, foreign government / foreign or international financing institution whose blacklisting rules have been recognized by the Government Procurement Policy Board;
4. Each of the documents submitted in satisfaction of the bidding requirements is an authentic copy of the original, complete, and all statements and information provided therein are true and correct;
5. (Name of Bidder) is authorizing the PPA General Manager or its duly authorized representative(s) to verify all the documents submitted;
6. None of the officers and members of (Name of Bidder) is related to the PPA General Manager, members of the Bids and Awards Committee (BAC), the Technical Working Group, and the BAC Secretariat, the head of the Project Management office or the end- user unit, and the project consultants by consanguinity or affinity up to the third civil degree;
7. (Name of Bidder) complies with existing labor laws and standards; and
8. (Bidder) is aware of and has undertaken the following responsibilities as a Bidder:
 - a) Carefully examine all of the Bidding Document;
 - b) Acknowledge all conditions, local or otherwise, affecting the implementation of the contract;
 - c) Made an estimate of the facilities available and needed for the contract to be bid, if any; and
 - d) Inquire or secure Supplemental / Bid Bulletin(s) issued for the Construction of Back-up Area, Port of Lipata, Lipata, Antique.

IN WITNESS WHEREOF, I have hereunto set my hand this _____ day of _____ 20
_____ at _____, Philippines.

Bidder's Representative / Authorized Signatory

SUBSCRIBED AND SWORN to before me this ____ day of _____ 20 _____ at
_____, Philippines.

Doc. No. _____;
Page No. _____;
Book No. _____;
Series of 2011

OMNIBUS SWORN STATEMENT FOR CORPORATION OR JOINT VENTURE

REPUBLIC OF THE PHILIPPINES)
CITY OF _____)SS

AFFIDAVIT

I (Name), of legal age, (Civil Status), (Nationality), and residing at (Address), after having been duly sworn in accordance with law, do hereby depose and state that:

1. I am the duly authorized and designated representative of (Name of Bidder) with office address at _____:
2. I am granted full power and authority to do, execute and perform any and all acts necessary and / or to represent the (Name of Bidder) in the bidding as shown in the attached (Proof of Authorization e.g. duly notarized Secretary's Certificate);
3. (Name of Bidder) is not "blacklisted" or barred from bidding by the Government of the Philippines or any of its agencies, offices, corporations, or Local Government Units, foreign government / foreign or international financing institution whose blacklisting rules have been recognized by the Government Procurement Policy Board;
4. Each of the documents submitted in satisfaction of the bidding requirements is an authentic copy of the original, complete, and all statements and information provided therein are true and correct;
5. (Name of Bidder) is authorizing the PPA General Manager or its duly authorized representative(s) to verify all the documents submitted;
6. None of the officers, directors, and controlling stockholders of (Name of Bidder) is related to the PPA General Manager, members of the Bids and Awards Committee (BAC), the Technical Working Group, and the BAC Secretariat, the head of the Project Management office or the or end- user unit by consanguinity or affinity up to the third civil degree;
7. (Name of Bidder) complies with existing labor laws and standards; and
8. (Name of Bidder) is aware of and has undertaken the following responsibilities as a Bidder:
 - a) Carefully examine all of the Bidding Document;
 - b) Acknowledge all conditions, local or otherwise, affecting the implementation of the contract;
 - c) Made an estimate of the facilities available and needed for the contract to be bid, if any; and
 - d) Inquire or secure Supplemental / Bid Bulletin(s) issued for the Construction of Back-up Area, Port of Lipata, Lipata, Antique.

IN WITNESS WHEREOF, I have hereunto set my hand this _____ day of _____ 20
_____ at _____, Philippines.

Bidder's Representative / Authorized Signatory

SUBSCRIBED AND SWORN to before me this _____ day of _____ 20 _____ at
_____, Philippines.

Doc. No. _____;
Page No. _____;
Book No. _____;
Series of 2011

CONSTRUCTION METHODOLOGY

Name of Project : _____
Proposed Project Description : _____
Location : _____

MINIMUM SCOPE OF CONSTRUCTION METHODOLOGY

A. RECLAMATION

1. Construction of containment area including supply and driving of PSC and R.C sheet piles (1,190 l.m), concrete works for retaining wall, coping wall, anchor blocks and slotted R.C curb (240 cu.m), rockworks (1,739 cu.m), fill materials (6,530 cu.m) and tie rods (30 sets – 32mmØ of various length)
2. Installation of interlocking concrete block pavement (ICBP, 1,819 sq.m), including gravel base course (150mm thk., 273 cu.m) and cement treated base course (150mm thk., 273 cu.m)
3. Construction of shear keys (167 sq.m)
4. Construction of lateral drain (63 l.m) with hot-dipped galvanized trench gate cover

B. PORT LIGHTING SYSTEM

1. Installation of hot-dipped galvanized steel tapered lamp post (3 pcs. – 10 mts. Ht.) with floodlight fixtures (6 units), including construction of RC lamp post foundation (3 units), RC ductbank (4 l.m) and RC handhole (2 units)

NOTES:

The narrative construction method will guide and familiarize the contractor and the PPA on how the project shall be carried out in accordance with the highest standard of workmanship.

The construction method shall be consistent with the Bar Chart / S-Curve Schedule, Equipment Schedule and Manpower Schedule.

Signature
(Authorized Signing Official)

MANPOWER SCHEDULE

Name of Project : _____

Proposed Project Description : _____

Location : _____

MANPOWER (Minimum)	CONTRACT DURATION (_____ Calendar Days)											
	M O N T H L Y											
	1	2	3	4	5	6	7	8	9	10	11	12
Project Manager												
Project Engineer												
Materials Engineer												
Safety Officer												
Foreman												
Specify other applicable positions, ie.:												
- Carpenter												
- Steelman												
- Mason												
- Electrician												
- Rigger												
- Others												

 Signature
 (Authorized Signing Official)

Republic of the Philippines
PHILIPPINE PORTS AUTHORITY
PPA Building, Bonifacio Drive, South Harbor,
Port Area, Manila, Philippines

C O N T R A C T
FOR THE CONSTRUCTION OF BACK-UP AREA
PORT OF LIPATA, LIPATA, ANTIQUE

KNOW ALL MEN BY THESE PRESENTS:

This Contract, made and entered into this _____ day of _____ 20___, in Manila, Philippines, by and between:

PHILIPPINE PORTS AUTHORITY, a government instrumentality created under Presidential Decree No. 857, as amended, with principal office at PPA Building, Bonifacio Drive, South Harbor, Port Area, Manila, represented herein by its duly authorized General Manager, **JUAN C. STA. ANA**, and hereinafter referred to as "**PPA**";

- and -

_____, a corporation duly organized and existing in accordance with Philippine laws, with office and business address _____, represented in this act by _____, duly authorized for this purpose, as evidenced by Secretary's Certificate _____, a copy of which is hereto attached and made an integral part hereof as Annex "A", and hereinafter referred to as "**CONTRACTOR**"

W I T N E S S E T H:

WHEREAS, in accordance with Republic Act No. 9184 and its Implementing Rules and Regulations, PPA advertised and published in a newspaper of general circulation and posted on the PPA website and G-EPS as well as in its bulletin board, an Invitation to Bid for the *Construction of Back-up Area, Port of Lipata, Lipata, Antique*;

WHEREAS, the **CONTRACTOR** and other prospective bidders submitted their respective bids for the foregoing project;

WHEREAS, after the opening of bids on _____, and the conduct of bid evaluation and required post-qualification, the bid submitted by the **CONTRACTOR** at its unit and lump sum prices set forth in its proposal was found to be the lowest calculated responsive bid in the amount of _____ Philippine Currency;

WHEREAS, pursuant to Head Office BAC Resolution No. _____ Series of _____, award of the contract was made to the **CONTRACTOR** in a Notice of Award dated _____, in the amount of _____ after submission of the required documents within the prescribed period and compliance to the conditions stipulated in the IRR;

WHEREAS, the **CONTRACTOR** duly accepted the award by signing its Conforme on the said Notice of Award;

NOW, THEREFORE, for and in consideration of the foregoing premises and the mutual covenants, stipulations and agreements herein contained, the PPA and the **CONTRACTOR** have agreed, as they do hereby agree, and contract as follows:

ARTICLE I

CONTRACT DOCUMENTS

1.01 The following documents shall constitute integral parts of this Contract, as fully as if the contents of the said documents are reproduced, incorporated and set forth herein, and shall govern and control in full force and effect the rights and obligations of the Parties, except as otherwise modified by the terms and conditions of this Contract, or by mutual agreement in writing of both parties, to wit

- a. Contract Agreement
- b. Bidding Documents
- c. Winning bidder's bid, including the Eligibility requirements, Technical and Financial Proposals and all other documents / statements submitted
- d. Performance Security
- e. Credit line in accordance with the provisions of the Revised IRR, if applicable
- f. Notice of Award of Contract; and
- g. Other contract documents that may be required by existing laws and the PPA such as the
 - (1) Construction Schedule and S-Curve
 - (2) Manpower Schedule
 - (3) Construction Methods
 - (4) Equipment Utilization Schedule
 - (5) Construction Safety and Health Program approved by the DOLE
 - (6) Pert / CPM
 - (7) Duly Approved Program of Work and Cost Estimates
 - (8) Certificate of Availability of Funds
 - (9) Abstract of Bids
 - (10) Resolution of Award

1.02 All Contract documents are and shall remain as the property of the PPA.

1.03 The words and expressions in this Contract shall have the same meanings respectively assigned to them in the Contract Documents referred to above.

ARTICLE II

CONTRACTOR'S UNDERTAKING
SCOPE OF WORK

2.01 The CONTRACTOR, in consideration of the payment to be made by the PPA to the CONTRACTOR, as stated in the Contract Documents and this Contract, the latter hereby covenants to execute and complete the *Construction of Back-up Area, Port of Lipata, Lipata, Antique*, in conformity in all respects with the provisions of this Contract, as follows:

I T E M S	TOTAL AMOUNT
1. General Expenses	P
2. Reclamation	P
3. Port Lighting System	P
4. Reimbursable Items	P
TOTAL AMOUNT	P

2.02 The CONTRACTOR agrees to commence, perform and complete the work called for and defined

in this Contract at its sole cost and expense, and to fully and faithfully furnish all materials, tools, labor supplies, equipment, services and superintendence for the implementation of this Contract in accordance with the schedule in the Contract Documents forming integral parts of this Contract.

2.03 The CONTRACTOR guarantees, among others, that all tools, equipment, machineries, instruments, accessories and materials it will supply or deliver or install and/or use in the construction and workmanship of all his work under the Contract, shall be in accordance with the Contract Documents.

The CONTRACTOR further guarantees that all the office facilities, computer system, digital camera and service vehicle it will provide / supply in connection with this contract shall be brand new and in accordance with the specifications prescribed thereof in the Bid Document.

2.04 The CONTRACTOR recognizes the position of trust and confidence reposed in it under this Contract, and agrees to perform its obligations hereunder in the most efficient and competent manner, use its skill and good judgment, always set in good faith, and carry out the execution of this Contract in the most sound, expeditious and economical manner consistent with the interest of the PPA.

ARTICLE III

CONSIDERATION

3.01 For and in consideration of the full, satisfactory and faithful performance by the CONTRACTOR of all its undertakings defined in and provided for under this Contract and Contract Documents, the PPA agrees to pay the CONTRACTOR the total amount not exceeding

Philippine Currency, inclusive of the 12% value added tax, payment to be made and computed on the basis of final quantities at the unit bid price for each item of work actually performed and finished for each pay item as determined and accepted by PPA and in the manner set forth in the Contract Documents, as full compensation for everything furnished and done by the CONTRACTOR under this Contract, including all works required but not specifically mentioned, and also for all losses and damages to the CONTRACTOR arising out of the work aforesaid, from the action of the elements, or from any obstruction or difficulty encountered in the prosecution of this Contract, for all expenses incurred by or in consequence of the suspension or discontinuance of the contract herein specified and for faithfully completing the contract and the whole thereof, at the time and in the manner provided in the Contract Documents.

It is agreed and understood that all bid prices specified in this contract shall be considered as fixed prices, and therefore not subject to price adjustment and escalation during the contract implementation, except under extraordinary circumstances and upon prior approval of the Government Procurement Policy Board (GPPB) or when a Treaty or International or Executive Agreement Expressly allows it. Any request for price escalation under extraordinary circumstances shall be submitted by PPA to the National Economic and Development Authority (NEDA). Extraordinary circumstances shall refer to events that may be determined by the NEDA in accordance with the Civil Code of the Philippines and upon recommendation of the PPA.

3.02 Final and full payment of the consideration herein above-mentioned shall be upon full completion of the project and fulfillment by the CONTRACTOR of all the terms and conditions set forth in this Contract.

However, it is agreed that no payment or payments made under this Contract, except the final payment upon issuance of Certificate of Completion and Acceptance, shall be understood as performance of this Contract, either wholly or in part, and no payment shall be construed to be an acceptance of defective work or improper implementation thereof.

3.03 Any payment due and payable to the CONTRACTOR may be set off against liquidated damages payable to the PPA by the CONTRACTOR under this Contract.

3.04 It is likewise understood that the CONTRACTOR shall show proof evidencing payments by the

CONTRACTOR of labor, materials, supplies, insurance premiums, etc., used in the work, before any payment is made to it.

For this purpose, the CONTRACTOR shall, before payment is made on the works accomplished, submit an affidavit certifying to the fact of payments of said labor, materials, supplies, equipment, insurance premiums, etc.

3.05 All payments shall be subject to existing government accounting and auditing rules and regulations.

3.06 Progress payments are subject to retention of ten percent (10%) referred to as the "retention money". Such retention shall be based on the total amount due to the contractor prior to any deduction and shall be retained from every progress payment until fifty percent (50%) of the value of works, as determined by the PPA are completed. If, after fifty percent (50%) completion, the work is satisfactorily done and on schedule, no additional retention shall be made; otherwise, the ten percent (10%) retention shall be imposed.

3.07 The total "retention money" shall be due for release upon final acceptance of the works. The CONTRACTOR may, however, request for the substitution of the retention money for each progress billing with irrevocable standby letters of credit from a commercial bank, bank guarantees or surety bonds callable on demand issued by any reputable surety or insurance company duly accredited by the Office of the Insurance Commission of amounts equivalent to the retention money substituted for and acceptable to PPA, provided that the project is on schedule and is satisfactorily undertaken. Otherwise, the ten percent (10%) retention shall be made. Said irrevocable standby letters of credit, bank guarantees and/or surety bonds, to be posted in favor of PPA shall be valid for a duration to be determined by PPA and will answer for the purpose for which the ten percent (10%) retention is intended, i.e., to cover uncorrected discovered defects and third party liabilities.

ARTICLE IV

PERFORMANCE SECURITY

4.01 To guarantee the faithful performance of the CONTRACTOR of its obligations under this Contract, it shall post prior to the signing of the Contract a performance security in the form of cash or cashier's / manager's check, bank draft/guarantee or irrevocable letter of credit issued by a Universal / or Commercial Bank, surety bond, callable on demand, issued by a surety or insurance company duly certified by the Office of the Insurance Commission as authorized to issue such security and acceptable to PPA or a combination thereof as may be required by PPA, in accordance with the following schedule:

- | | | |
|----|--|---|
| a. | cash or cashier's / manager's check, bankdraft / guarantee or irrevocable letter of credit issued by a Universal or Commercial Bank | - Ten Percent (10%) of the total contract price |
| b. | surety bond callable upon demand issued by a surety or insurance company duly certified by the insurance Commission as authorized to issue such security | - Thirty percent (30% of the total contract price |
| c. | any combination of the foregoing | - Proportionate to share of form with respect to total amount of security |

4.02 This performance security shall be denominated in Philippine Pesos and posted in favor of PPA, and shall be forfeited in favor of PPA in the event it is established that the CONTRACTOR is in default in any of its obligations under this Contract.

4.03 Subject to the conditions of the Contract, the performance security may be released by PPA after the issuance of the Certificate of Acceptance of the project, provided that PPA has no claims filed against the CONTRACTOR or the surety company and there are no claims for labor and materials filed

against the contractor.

4.04 Should any surety upon the bond for the performance of this Contract become unacceptable to the PPA, the CONTRACTOR shall promptly furnish such replacement security as may be required from time to time up to the sum equal to the amount of the original surety.

4.05 The CONTRACTOR shall post an additional performance security following the schedule above to cover any cumulative increase of more than ten percent (10%) over the original value of the contract as a result of amendments to order or change orders, extra work orders and supplemental agreements as the case may be. The CONTRACTOR shall cause the extension of the validity of the performance security to cover approved contract time extensions.

4.06 In case of a reduction in the contract value or for partially completed works under this contract which are usable and accepted by PPA, and the use of which in the judgment of PPA shall not affect the structural integrity of the entire project, PPA may allow a proportional reduction in the original performance security, provided that any such reduction is more than ten percent (10%) and that the aggregate of such reductions is not more than fifty percent (50%) of the original performance security.

ARTICLE V

COMPLETION TIME: LIQUIDATED DAMAGES

5.01 The CONTRACTOR agrees and obligates itself to perform and complete all works provided for in this Contract within **THREE HUNDRED SIXTY (360)** calendar days (including Sundays and Holidays), reckoned not later than seven (7) calendar days from issuance of the Notice to Proceed. Notice to Proceed shall be issued after this Contract has been signed by the Parties hereof.

5.02 Time is of the essence of this Contract. Should the CONTRACTOR refuse or fail to satisfactorily complete the work within the specified contract time, plus any time extension duly granted and is hereby in default under the contract, the CONTRACTOR shall pay the PPA for liquidated damages, and not by way of penalty, an amount as provided in the conditions of contract, equal to at least one-tenth (1/10) of one (1) percent of the cost of the unperformed portion of the works for everyday of delay.

5.03 The project or a portion thereof may be deemed usable when it starts to provide the desired benefits as certified by the Facilities Construction and Maintenance Department of PPA.

5.04 It is understood that the damages herein provided are fixed and agreed liquidated damages and to be entitled to such damages, PPA does not have to prove that it has incurred actual damages. Such amount shall be deducted from any money due or which may become due the CONTRACTOR under the contract and/or collect such liquidated damages from the retention money or other securities posted by the CONTRACTOR, whichever is convenient to PPA.

5.05 In case that the delay in the completion of the work exceed a time duration equivalent to ten percent (10%) of the specified contract time plus any time extension duly granted to the CONTRACTOR, PPA may rescind the contract, forfeit the CONTRACTOR's performance security and take over the prosecution of the project or award the same to a qualified contractor through negotiated contract.

5.06 In no case, however, shall the total sum of liquidated damages exceed ten percent (10%) of the total contract price, in which event the contract shall automatically be taken over by PPA or award the same to a qualified contractor through negotiation and the erring CONTRACTOR's performance security shall be forfeited. The amount of the forfeited performance security shall be aside from the amount of the liquidated damages that the CONTRACTOR shall pay PPA under Section 5.02 hereof and impose other appropriate sanctions.

ARTICLE VI

EXTENSION OF CONTRACT TIME

6.01 Should the amount of additional work of any kind or other special circumstances of any kind

whatsoever occur such as to fairly entitle the CONTRACTOR to an extension of contract time, PPA shall determine the amount of such extension; provided that PPA is not bound to take into account any claim for an extension of time unless the contractor has prior to the expiration of the contract time and within thirty (30) calendar days after such work has been commenced or after the circumstances leading to such claim have arisen, delivered to PPA notices in order that it could have investigated them at that time. Failure to provide such notice shall constitute a waiver by the CONTRACTOR of any claim. Upon receipt of full and detailed particulars, PPA shall examine the facts and extent of the delay and shall extend the contract time for completing the contract work when, in PPA's opinion, the findings of facts justify an extension.

6.02 No extension of contract time shall be granted the CONTRACTOR due to (a) ordinary unfavorable weather conditions; and (b) inexcusable failure or negligence of CONTRACTOR to provide the required equipment, supplies or materials.

6.03 Extension of contract time may be granted only when the affected activities fall within the critical path of the PERT/CPM network.

6.04 No extension of contract time shall be granted when the reason given to support the request for extension was already considered in the determination of the original contract time during the conduct of detailed engineering and in the preparation of the contract documents as agreed upon by the parties before contract perfection.

6.05 Extension of contract time shall be granted for rainy/unworkable days considered unfavorable for the prosecution of the works at the site, based on the actual conditions obtained at the site, in excess of the number of rainy/unworkable days predetermined by the PPA in relation to the original contract time during the conduct of detailed engineering and in the preparation of the contract documents as agreed upon by the parties before contract perfection and/or for the equivalent period of delay due to major calamities such as exceptionally destructive typhoons, floods and earthquakes, and epidemics, and for causes such as non-delivery on time of materials, working drawings, or written information to be furnished by the PPA, non-acquisition of permit to enter private properties within the right-of-way resulting in complete paralization of construction activities, and other meritorious causes as determined by the PPA's authorized Engineer and approved by the PPA. Shortage of construction materials, general labor strikes, and peace and order problems that disrupt construction operations through no fault of the CONTRACTOR may be considered as additional grounds for extension of contract time provided they are publicly felt and certified by appropriate government agencies such as DTI, DOLE, DILG and DND, among others. The written consent of bondsmen must be attached to any request of the CONTRACTOR for extension of contract time and submitted to the PPA for consideration and that the validity of the performance security shall be correspondingly extended.

ARTICLE VII

ENTIRE CONTRACT

7.01 Provisions to the contrary notwithstanding, it is agreed that this is an entire contract for one whole complete work and that partial payments on account by the PPA or the use of parts of the work or equivalent shall not constitute an acceptance of any part of the work before its entire completion and final acceptance in writing by the PPA.

ARTICLE VIII

CONTRACTOR'S LIABILITY

8.01 The Parties, likewise, hereby agree that the employees of the CONTRACTOR are not employees of the PPA; hence, the PPA shall not in any way be liable or responsible for any personal injury or damages including death sustained or caused by any of the employees of the CONTRACTOR and/or his sub-contractor or agent or supplier whether or not occurring during the performance of their duties. The CONTRACTOR agrees and binds itself to indemnify the PPA for whatever injuries or damages caused or occasioned or contributed to by the failure, negligence or conduct of the CONTRACTOR and/or its employees, sub- contractors, agent and supplier or consultants arising out of or in connection with or on

any insurance company duly certified by the Insurance Commission as authorized to issue such insurance, to insure the works against all losses or damages arising from whatever cause for which the CONTRACTOR is responsible under the Contract.

ARTICLE XIII

WARRANTY

13.01 The CONTRACTOR shall assume full responsibility for the contract work from the time project construction commenced up to final acceptance thereof by the PPA and shall be held responsible for any damage or destruction of the works, except those occasioned by force majeure. The CONTRACTOR shall be responsible for the safety, protection, security, and convenience of its personnel, third parties, and the public at large, as well as the works, equipment, installation and the like to be affected by the construction work.

13.02 The defect liability period for the project covered by this Contract shall be one (1) year from project completion up to final acceptance thereof by the PPA. During this period, the CONTRACTOR shall undertake and complete the repair works, at its own expense, of any damage to the said project within NINETY (90) DAYS from the time the PPA General Manager or his duly authorized representative has issued an order to undertake repair. In case of failure or refusal to comply with this order, PPA shall undertake such repair works and the CONTRACTOR shall fully reimburse the former for all the expenses incurred therein upon demand.

13.03 After final acceptance of the project by the PPA, the CONTRACTOR shall be responsible for structural defects and/or failure of the said project within the period of FIFTEEN (15) YEARS from the date of final acceptance thereof by the PPA. For this purpose, the CONTRACTOR shall put up a warranty security in the form of cash or letter of credit issued by a Universal or Commercial Bank, Bank guarantee confirmed by a Universal or Commercial Bank or surety bond, callable on demand issued by the Government Service Insurance System (GSIS) or a surety or insurance company duly certified by the Insurance Commission as authorized to issue such security and acceptable to PPA in accordance with the following schedule:

- a. Cash or letter of credit issued by a Universal or Commercial Bank - Five percent (5%) of the total contract price
- b. Bank guarantee confirmed by a Universal or Commercial Bank - Ten percent (10%) of the total contract price
- c. Surety bond callable upon demand - Thirty percent (30%) of the total contract price

The warranty security shall be denominated in Philippine Pesos, remain effective for one (1) year from the date of issuance of the Certificate of Final Acceptance by PPA and be returned only after the lapse of the said one (1) year period.

ARTICLE XIV

TAXES, LICENSES, PERMITS AND FEES

14.01 The CONTRACTOR's tax, licenses, permits, fees and all other taxes, fees or charges of whatever form, kind or nature due or which may be due to the national and/or local government units and/or its instrumentalities/agencies on account of the performance and completion of the work stipulated herein, fees for the testing of materials and samples and fees for the testing and inspection of the installation by all agencies having jurisdiction and all necessary and incidental expenses relative thereto including preparation of documents and notarial fees shall be paid for and obtained by the CONTRACTOR on its own account. Should the PPA be compelled to advance the same, PPA is hereby authorized to deduct the amount advanced from whatever amount due the CONTRACTOR from PPA.

14.02 The CONTRACTOR shall pay taxes in full and on time and that failure to do so shall entitle PPA to suspend payment to the CONTRACTOR. Further, the CONTRACTOR shall during the term of this

Contract regularly present to PPA a tax clearance from the Bureau of Internal Revenue (BIR) as well as a copy of its income and business tax returns duly stamped and received by the BIR and duly validated with the tax payments made thereon.

ARTICLE XV

AGREEMENT MODIFICATION

15.01 No modification, alteration or waiver of any provision herein contained shall be binding on the Parties hereto unless evidenced by a written amendment signed by the parties hereof.

15.02 A variation order (change order/extra work order) may be issued by PPA under the conditions set forth in the applicable provisions of Republic Act No. 9184 and its Implementing Rules and Regulations.

15.03 The PPA may, at any time by written order and without notice to the Sureties, direct the CONTRACTOR to perform additional/extra work necessary to and within the General Scope of the project as bid and awarded. The CONTRACTOR shall be paid for additional/extra work items whose unit prices shall be derived based on the following:

- a. For additional/extra works duly covered by change orders involving work items which are exactly the same or similar to those in the original contract, the applicable unit prices of work items in the original contract shall be used.
- b. For additional/extra works duly covered by Extra Work Orders involving new work items that are not in the original contract, the unit prices of the new work items shall be based on the direct unit costs used in the original contract (e.g. unit cost of cement, rebars, form lumber, labor rate, equipment rental, etc.). All new components of the new work item shall be fixed prices, provided the same is acceptable to both PPA and the CONTRACTOR, and provided further that the direct unit costs of new components shall be based on the CONTRACTORS's estimate as validated by PPA via documented canvass in accordance with existing rules and regulations. The direct cost of the new work item shall then be combined with the mark-up factor (i.e., taxes and profit) used by the contractor in his bid to determine the unit price of the new work item.

15.04 Request for payment by the CONTRACTOR for any extra work shall be accompanied by a statement, with the approved supporting forms, giving a detailed accounting and record of amount for which he claims payment. Said request for payment shall be included with the CONTRACTOR's statement of progress payment.

ARTICLE XVI

SUSPENSION OF WORK

16.01 The PPA or its duly authorized representative shall have the authority to suspend the work wholly or partly by written order for such period as may be deemed necessary, due to force majeure or any fortuitous events or for failure on the part of the CONTRACTOR to correct bad conditions which are unsafe for workers or for the general public to carry out valid orders given by PPA or to perform any provisions of the Contract, or due to adjustment of plans to suit field conditions as found necessary during construction. The CONTRACTOR shall immediately comply with such order to suspend the work wholly or partly.

In case of total suspension, or suspension of activities along the critical path, which is not due to any fault of the CONTRACTOR, the elapsed time between the effective order of suspending operation and the order to resume work shall be allowed the CONTRACTOR by adjusting the contract time accordingly.

ARTICLE XVII

INDIVISIBILITY OF OBLIGATION

17.01 It is the intent of the Contract that all the documents, annexes and addenda forming part hereof, shall be read together and that each and every provision or stipulation hereof be given full force, effect and applicability. However, in the event that one or more provisions or stipulations herein be declared null and void by the courts, or otherwise rendered ineffective, the remaining provisions and stipulations shall not be affected thereby.

ARTICLE XVIII

ARBITRATION/REMEDY AND RELIEF

18.01 Should there be any dispute or difference of any kind whatsoever which shall arise between the parties in connection with the implementation of this Contract, the Parties hereto shall make every effort to resolve amicably such dispute or difference by mutual consultation. In the event that such dispute or disagreement be not resolved to their mutual satisfaction, the matter shall be submitted to arbitration in the Philippines according to the provisions of Republic Act No. 876, otherwise known as the "Arbitration Laws" and Republic Act No. 9285; otherwise known as the "Alternative Dispute Resolution Act of 2004". Provided, however, that disputes that are within the competence of the Construction Industry Arbitration Commission to resolve shall be submitted thereto. Provided, further, that, by mutual agreement, the parties hereto may agree in writing to resort to other alternative modes of dispute resolution. Provided, finally, that the arbitration proceeding shall be without prejudice to the right of PPA to rescind or terminate this contract in accordance with Article XIX, Section 19.04 hereof.

18.02 Should the PPA be constrained to resort to court action to enforce or safeguard its rights and interests under this Contract, the CONTRACTOR shall be liable to the PPA for attorney's fees in an amount equivalent to Twenty Percent (20%) of the total sum claimed in the complaint, exclusive of other damages and the expenses of litigation. Venue of all court actions in connection with or arising out of this contract shall be laid exclusively in the proper court of the City of Manila.

18.03 It is clearly understood that in case a dispute or disagreement arises between the PPA and the CONTRACTOR regarding the manner by which the latter is performing works, the CONTRACTOR shall follow the instruction of the PPA relative thereto, otherwise, it shall have no right to ask for arbitration or go to court for relief.

ARTICLE XIX

OTHER COVENANTS

19.01 It is expressly agreed and understood that in case of irreconcilable conflict between the provisions of this Contract and the provisions of any of the contract documents, the former shall be controlling.

19.02 It should also be clearly understood that any payment or failure of the PPA to demand compliance with any of the terms and conditions of this Contract or any act of liberality on the part of the PPA shall not be construed or considered as a waiver on the part of the PPA for the enforcement of this Contract, nor shall it relieve the CONTRACTOR of any of its obligations provided thereunder.

19.03 Under no circumstances shall the PPA be held liable for the payment of any extra work, or extra cost of work, change of work, or change order undertaken without the prior written approval of the PPA to perform said work.

19.04 Notwithstanding any provision to the contrary, the PPA has the right to terminate, cancel and/or rescind this Contract *motu proprio*, in case of breach thereof by the CONTRACTOR, without need of judicial action by giving at least TEN (10) Days written Notice to that effect to the CONTRACTOR, which Notice shall be final and binding on all the parties. In such event, the PPA may take over and continue the project, and the contracts and agreements entered into by the CONTRACTOR with third parties,

which the PPA in its discretion, may want to assume are hereby conclusively deemed assigned to the PPA. For this purpose, the CONTRACTOR here agrees and obligates itself to incorporate or cause to be incorporated in any contract or agreement with third parties, as same is connected with or related to the performance of any or all of the CONTRACTOR's obligations and undertakings hereunder, a stipulation providing for its assignability to and assumption by the PPA, at the option of the PPA. It is further agreed and understood that upon receipt of the Notice mentioned above, the CONTRACTOR cannot remove, withdraw or pull-out any of the equipment, machineries, tools, materials, and/or supplies brought to the project site without the written approval of the PPA.

Within thirty (30) days after termination, cancellation or rescission of this Contract, the Parties shall settle their respective accountabilities as of the date of termination, cancellation or rescission, including the refund of any and all advances made plus legal interest from date of receipt of the amount or amounts advanced.

19.05 It is expressly agreed that whenever the CONTRACTOR is behind schedule in its contract work and incurs ten (10%) percent or more negative slippage based on its approved PERT/CPM, the PPA may undertake the whole or portion of the unfinished work by administration or by negotiation through another qualified CONTRACTOR.

Whenever a work activity in the project is not being done on schedule per approved PERT/CPM, the PPA shall notify and direct the CONTRACTOR to immediately undertake such work activity. If within fifteen (15) days from receipt of such notice, the CONTRACTOR fails to start work and to show a satisfactory performance, PPA may take over the whole or portion of such work and have such work done by administration or award the same to another qualified contractor through negotiated contract at the current valuation price.

19.06 The PPA has the right to require the CONTRACTOR to supply and provide the required tools, materials, supplies, equipment, facilities, and to increase the number of workers assigned to the work when exigencies of the service so require. Should the CONTRACTOR fail, refuse or neglect to comply with the same, PPA shall have the option to take over the project in whole or in part or award the same to another CONTRACTOR through negotiated contract at the current valuation price. Any increase in cost which the PPA may incur as a result of its take-over of the project pursuant to Sections 19.04, 19.05 and 19.06 shall be borne by and charged to the CONTRACTOR.

19.07 The CONTRACTOR shall provide and do everything necessary to perform its obligations under this Contract according to the true intent and meaning of all the Contract Documents taken together, whether the same may or may not be shown or described particularly in the drawings, plans and specifications provided that the same can be inferred therefrom. Should the CONTRACTOR find discrepancy in the drawings, plans and specifications, it shall immediately refer the same to the PPA, whose decision shall be followed.

19.08 The CONTRACTOR agrees and obligates itself to restore to its original condition, on its own account, any public road, pavement, streets or open space and/or public or private property which are excavated or in any manner used by the CONTRACTOR in connection with the performance of its obligations under this Contract.

19.09 The CONTRACTOR agrees and binds itself to hold and save PPA free and harmless from any damage, claims and rights of action by third parties arising out of or by reason of this Contract and all injuries that may be suffered by PPA due to the failure, negligence, delay or conduct on the part of the CONTRACTOR and/or its employees in the performance of their obligations under this Contract.

19.10 No final payment of the contract shall be made to the CONTRACTOR without the Certificate of Completion and/or Acceptance from the Office of the Municipal Engineer of the Municipality concerned of the local works to be restored mentioned in Section 19.08 hereof, otherwise the cost of restoration shall be made available out of any collectible/receivable by the CONTRACTOR from the PPA.

19.11 Notwithstanding any extra work, change of work or orders made, if any, by the PPA, it is agreed that the same shall be completed within the period herein fixed and provided.

19.12 The CONTRACTOR shall hold the PPA free and harmless from whatever suit and hereby binds and obligates itself to indemnify the PPA for any and all liabilities, losses, damages, judgment, awards, fines, penalties and all expenses, legal or otherwise, of whatever kind and nature, arising from and by reason of this Contract, due to the fault, negligence, act, omission, delay, conduct, breach of trust or non-observance or violation of this Contract or any stipulation and warranty by the CONTRACTOR and/or any of its employees, agents, representatives or sub-contractors.

ARTICLE XX

SPECIAL REPRESENTATION

20.01 The CONTRACTOR hereby represents that all documents it submitted which form integral parts hereof are authentic and duly executed with all the required formalities for the same, and that the facts and/or date contained therein are true and correct. A breach of this representation including all misrepresentation in the documents or suppression of material facts therein, which if known, could have disqualified the CONTRACTOR such that this contract would not have been made and entered into, gives the PPA the immediate right or recourse to **motu proprio** rescind, abrogate or otherwise terminate the contract without need of judicial action, in accordance with Section 19.04 hereof.

20.02 The CONTRACTOR hereby warrants that it has not given nor promised to give any money, gift or any material favor/consideration to any official or employee of the PPA to secure this Contract; that any violation of this warranty shall be sufficient ground for the PPA to revoke or cancel this Contract extrajudicially or without need of judicial intervention.

ARTICLE XXI

BUDGETARY REQUIREMENT

21.01 The parties hereto hereby adopt and incorporate herein by reference, Letter of Instruction No. 767 dated 16 November 1978, issued by the Office of the President, as implemented by the Letter Circular, dated 7 December 1978, of the Department of Budget and Management.

ARTICLE XXII

EFFECTIVITY

22.01 This Contract shall become effective after the same shall have been signed by the Parties hereof.

IN WITNESS WHEREOF, the Parties have hereunto signed this Contract on the date and place first hereinabove written.

PHILIPPINE PORTS AUTHORITY

By:

Juan C. Sta. Ana
General Manager

By: _____

WITNESSES:

Tomas C. Carlos
Assistant General Manager
Engineering Office

ACKNOWLEDGMENT

REPUBLIC OF THE PHILIPPINES)
City of _____) S.S.

BEFORE ME, a Notary Public for and in the City of _____, this ____ day of _____, 20____, personally appeared the following :

NAME	Proof of Identity	DATE	PLACE
Juan C. Sta. Ana _____	_____ _____	_____ _____	_____ _____

known to me and to me known to be the same persons who executed the foregoing instrument as :

POSITION	COMPANY	CTC No.	DATE	PLACE
General Manager _____	Philippine Ports Authority _____	_____ _____	_____ _____	_____ _____

and they acknowledged to me that the same is their own free act and deed as well as the free and voluntary act of the corporation they represent.

This foregoing instrument is a Contract for the Construction of Back-up Area, Port of Lipata, Lipata, Antique, consisting of 13 pages, including this page on which this acknowledgment is written, signed by the parties and their instrumental witnesses on each and every page thereof.

IN WITNESS WHEREOF, I have hereunto affixed my hand and notarial seal on these presents at the place and on the date first above written

Doc. No. _____;
Page No. _____;
Book No. _____;
Series of 20____;